

57-115-

#611

1102 Monticello Rd

100x127 } \$0,900
150x127 }
M-1

Commonwealth of Va

4+ stories
con blk found, brick walk, built up flat roof
are concrete

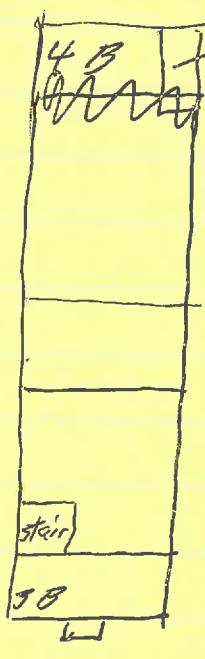
Va Workshop for the Blind Bldg
c. 1930

Jeffersons Country, May-June 1969, "The Workshop", a thin sheet

4 1/2-story bldg
built 1957

Daily Progress, 3/20/58

Sanborn
1929-57



fireproof construction
built 1957

fireproof construction
built 1930



1102 Monticello Rd.

94-451

~~94-451~~

REC #11/1929

Va Assoc of Workers for the Blind, Inc. ->

2 L Jarman & R Watson Saddle, trustees

deed of trust

Lot 1, 3, 5, & 6 on 1929 plat DB 65-131, on Mont Rd

"of all bldgs & impts thereon"

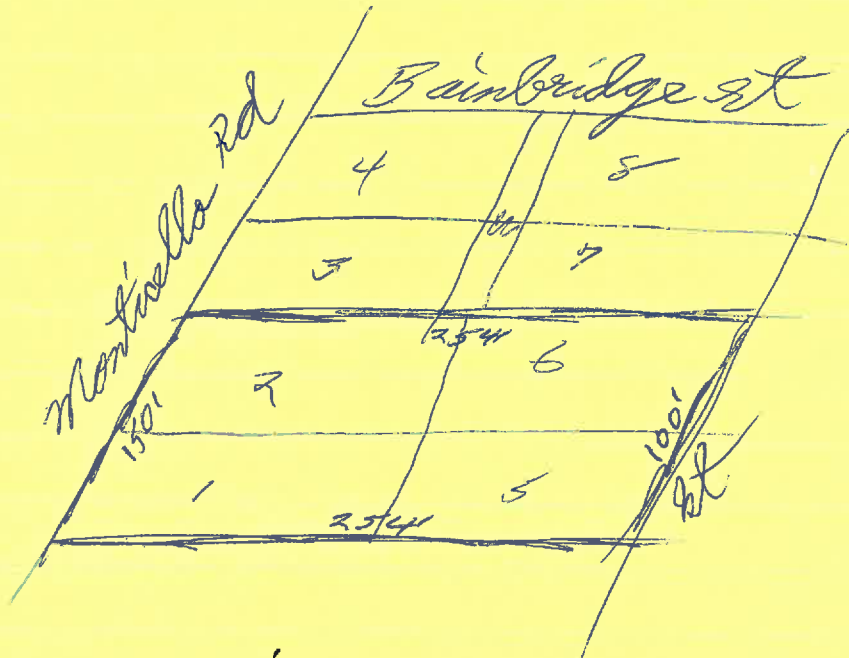
same as DB 65-131

65-131

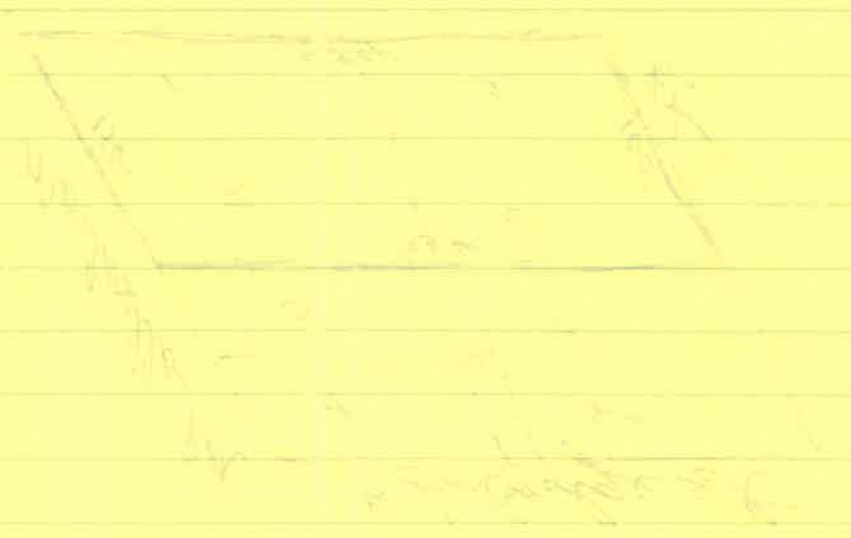
J L Hartman (S) -> Va A W B, Inc

\$ 3,000

5/21/1929



1930 Dick V.A.W.B. 2, 5, 6 Evident Rd 800 + - for J. H. Hocking
1931, '32 ml



[Faint, illegible handwritten notes and text, possibly bleed-through from the reverse side of the page.]

1924	nl		
1927	Va Work Shop (for blind)	- 106	4th St SE
1929	Va Workshop for the Blind	- 108	"
1931	"	- 1102	Mont. Rd
1938, 45	Va Workshop for the Blind	- 611 (1102)	Mont. Rd
1950	"	611	"
1953	"	64 (1102)	"
1957, 66	"	1102	"

3-5, 3 x 12 bay

brick, 5-0 top

flat roof, ^{stone} capped parapet ^{with} band ^{stone} below parapet
center bay; gabled parapet w/ blind window

bays recessed but brick pier above 1st story windows

windows = groups 3 9-l ind each of juck each w/
1 stone keystone, brick sills

1st level facade: 12 ~~story~~

2nd & 3rd levels cent bay facade:

1 9-l flanked by 6-l, ^{corpiers} keystone

and bay w = stair = 9-l on each level each landing

ent vestibule covers cent bay facade;

^{white} pilasters (Toscan), entab, high roof
double doors, transom

base. same, but no arch

per bay sub-b bricked up - or orig blind wad?

loading dock rear, sub-b