

CITY OF CHARLOTTESVILLE

Department of Neighborhood Development Services

City Hall Post Office Box 911
Charlottesville, Virginia 22902
Telephone 434-970-3182
Fax 434-970-3359
www.charlottesville.org



July 16, 2019

TO: Charlottesville Planning Commission, Neighborhood Associations & News Media

Please Take Notice

A Work Session of the Charlottesville Planning Commission will be held on **Tuesday, July 23, 2019 at 5pm in the NDS Conference Room (610 East Market Street)**

AGENDA

1. Fontaine Avenue Streetscape
2. Public Comment

cc: City Council
Mike Murphy
Alexander Ikefuna
Planners
Jeff Werner
Lisa Robertson



Fontaine Avenue Streetscape Improvements

Planning Commission

July 23, 2019



*In Conjunction
With*

TOOLE
DESIGN

Agenda

- Project Overview / Background
- Schedule and Process
- Overview of Public Outreach & Conceptual Design Development
- Review of Comprehensive Plan Consistency

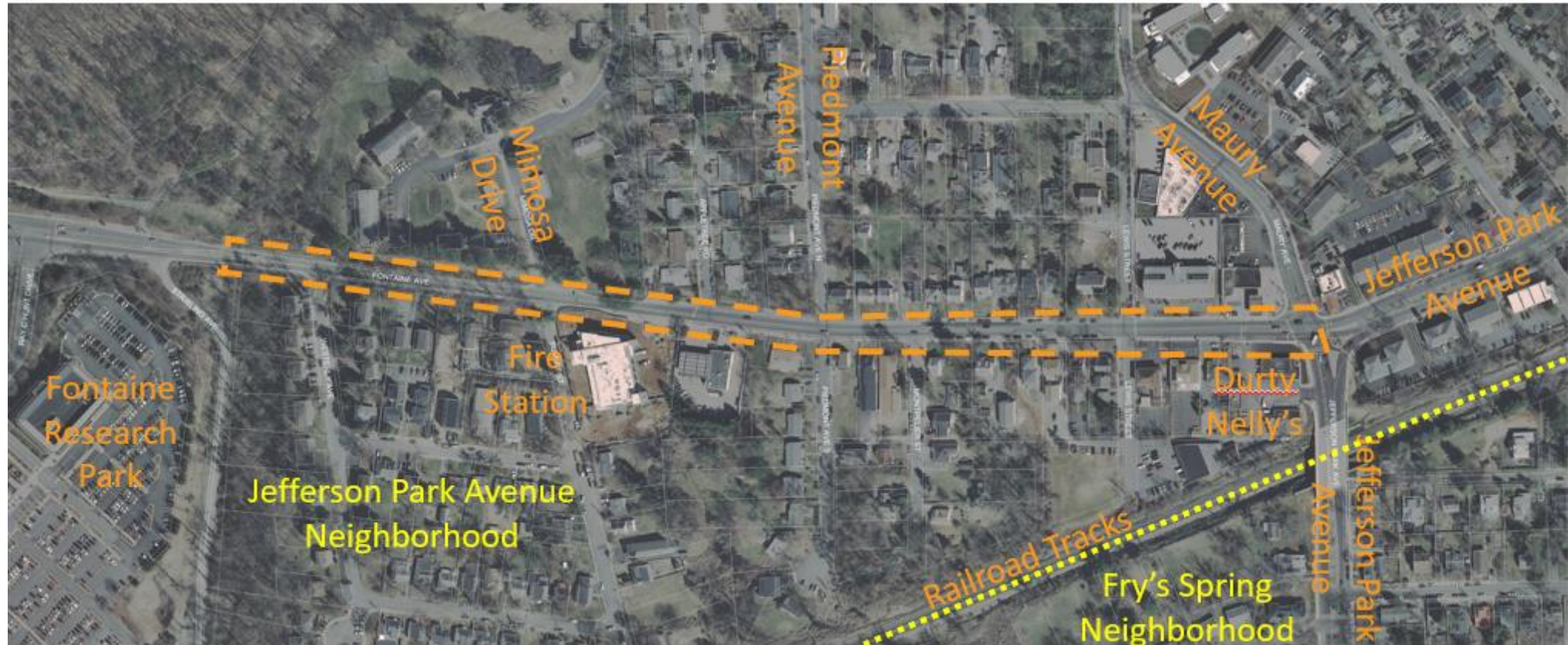




Project Overview / Background

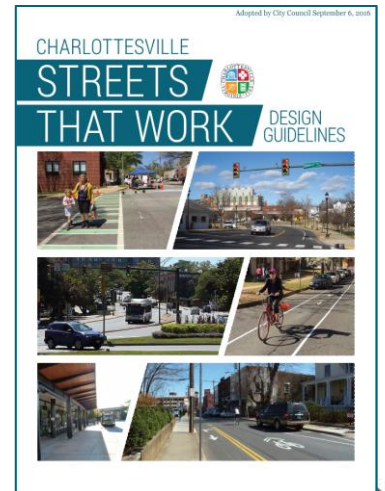
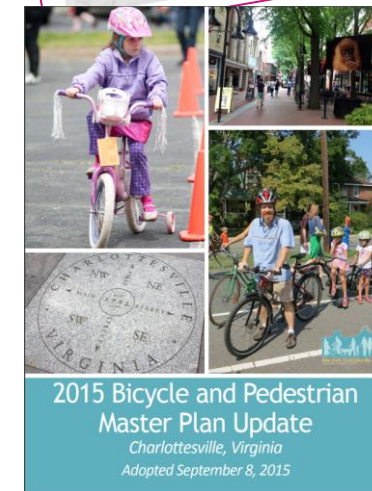
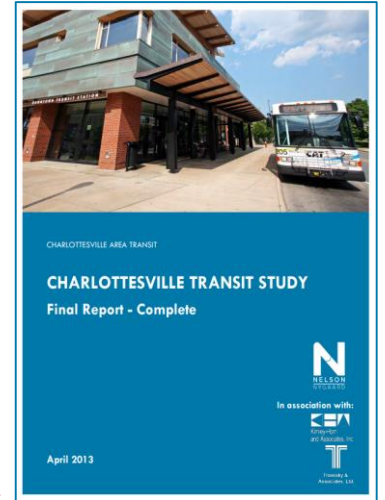
Project Area

- Project Area as defined by the project SMARTSCALE application



Evolution

- Previous Fontaine Ave Study in 2005
- What Remains the Same
 - Context sensitive design for Fontaine Avenue
 - Transit, pedestrian-friendly, neighborhood orientation
 - Improving the “quality of life” and multimodal opportunities
- What is Different
 - State of the practice/New techniques
 - Charlottesville Transit Study – 2013
 - Bicycle and Pedestrian Master Plan – 2015
 - Streets That Work Plan – 2016



Evolution

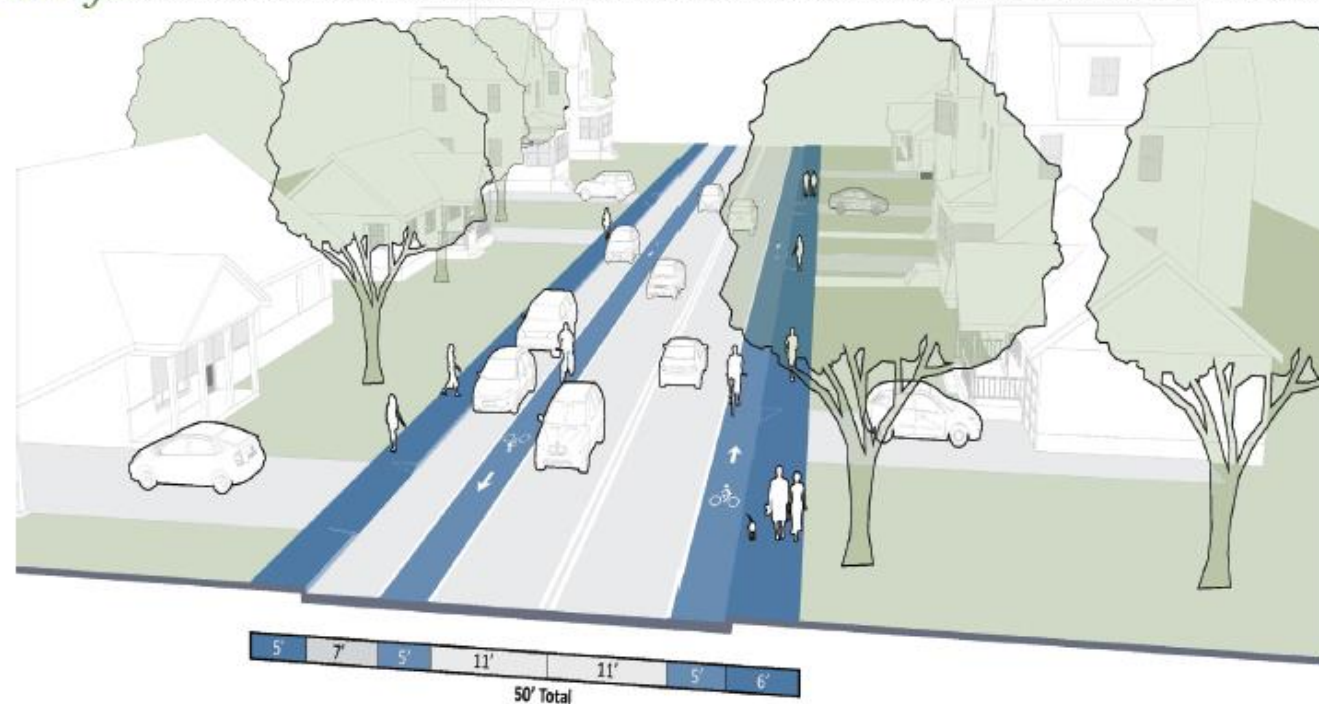
2016 Streets That Work // Fontaine to Maury Designated Neighborhood "A"

▶ Future

The proposed "Retrofit" Neighborhood A street maintains a single travel lane in each direction and consolidates on-street parking to one side of the street to provide space for dedicated bike lanes.

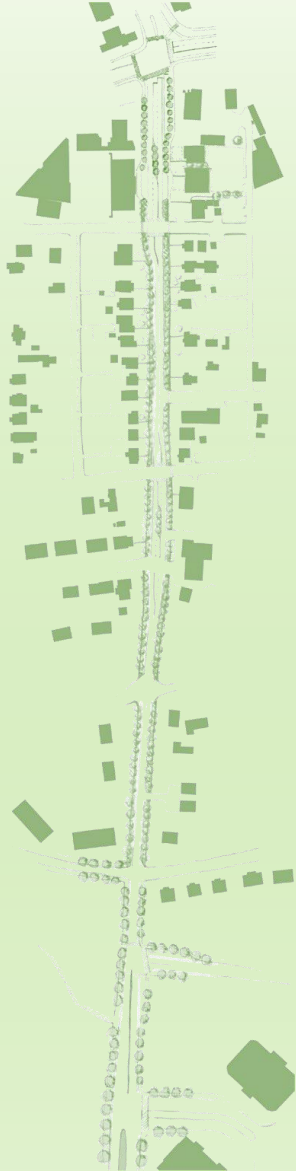
In the "Unconstrained" scenario, the roadway configuration is the same as the "Retrofit" scenario, and a wide buffer zone separates the sidewalk clear zone from the roadway. This area can accommodate plantings and medium trees, as well as pedestrian scale lighting and street furniture.

▶ Retrofit



Evolution

2016 Streets That Work // Fontaine to Maury Designated Neighborhood "A" Neighborhood A

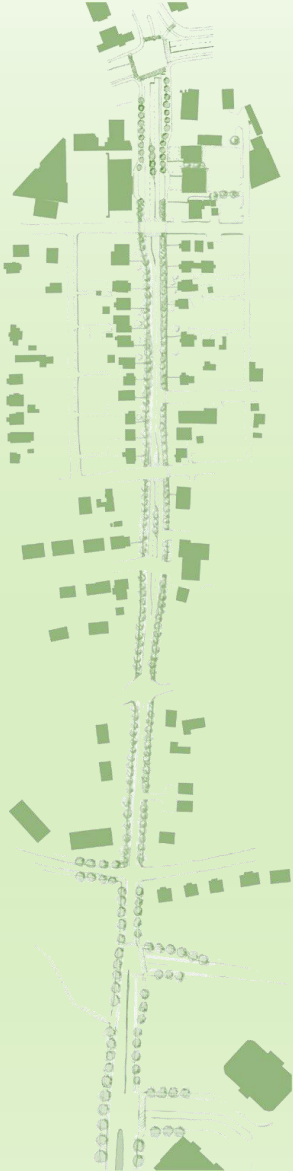


NEIGHBORHOOD A STREET Major Design Elements	Recommended	Parameters
Right-of-way	n/a	25' - 50'
Sidewalks (Highest Priority Street Element)	Yes	5'-6' clear walk zone
Curbside Buffer Zone	Yes	3' - 6' Width requirements: small trees = 4'; medium trees = 4' (6' preferred); large trees = 4' (6' preferred); smaller widths can be achieved if soil volume minimum met.
Street Trees**	Yes	Locate in curbside buffer or in on-street parking zone Soil volume minimums: small trees = 250 ft ³ ; medium trees = 400 ft ³ ; large trees = 400 ft ³ (700 ft ³ preferred)
On-Street Parking* (High Priority Street Element in areas without off-street parking)	Yes	7' - 8'*
Diagonal On-Street Parking	No	
Off-Street Parking Access	Yes	Sidewalk level and ADA access to be maintained at all driveways
Travel Lane Widths*	n/a	10-11', if transit 11' outer lane
*Combined travel lane and on-street parking width 18' minimum (7' on-street parking, 11' travel lane OR 8' on-street parking, 10' travel lane)		
**Trees: small (10' – 30' mature height); medium (30' – 50' mature height); large (50' mature height)		
	Highest Priority Street Elements	High Priority Street Elements

Draft Design Principles

*Based on the Charlottesville's Bike/Ped Plan, Streets That Work Plan,
and the VDOT Smart Scale Application*

- Create a Complete Street
 - Improve pedestrian, bicycle and transit facilities
 - Accommodate the needs of all travel modes
- Increase Safety and Comfort for Pedestrians and Bicyclists
 - Provide a buffer between roadway and facilities
 - Where feasible, provide physical separation for facilities
- Beautify the Corridor as a Gateway
 - Provide landscaping and hardscape materials that provide shade, comfort, safety, and increases the attractiveness of the gateway



Fontaine Avenue Streetscape Improvements

- Regional and local benefits:
 - **Improve access** to:
 - ▶ US-29
 - ▶ UVA
 - ▶ University Health System
 - **Connect** to proposed bicycle and pedestrian facilities to Fontaine Research Park and beyond
 - **Increase opportunities** for walking, bicycling, and the use of other transit



Project Budget

- PE (Survey, Environmental, Design)= \$1,200,000
- RW (Right of Way and Easement Acquisition, Utility Relocation = \$3,700,000
- CN (Construction, Oversight, Inspection, Contingencies) = \$6,800,000

- TOTAL PROPOSED PROJECT FUNDING = \$11,700,000

- Project Is Fully Funded Through Smartscale (HB2)





Schedule and Process

Initial Project Schedule



<p>Fall 2018 Spring 2019</p>	<p>CONCEPTUAL DEVELOPMENT</p> <ul style="list-style-type: none"> • Data Collection • Traffic Analysis • Alternative Concepts
<p>Spring 2019 Fall 2019</p>	<p>PRELIMINARY DESIGN</p> <ul style="list-style-type: none"> • Refine Concepts • Prepare 30% Plans • Agency Review
<p>Fall 2019 Winter 2020</p>	<p>DESIGN DEVELOPMENT</p> <ul style="list-style-type: none"> • Prepare 60% Plans • Incorporate Feedback
<p>Winter 2019 Winter 2020</p>	<p>RIGHT OF WAY AND UTILITIES</p> <ul style="list-style-type: none"> • Request Right of Way Authorization • Utility Relocations • Easements
<p>Winter 2020 Fall 2021</p>	<p>FINAL DESIGN</p> <ul style="list-style-type: none"> • Prepare 100% Plans • Coordinate Bid Package • Final Agency Review • Request Authorization for Construction
<p>Fall 2021</p>	<p>ADVERTISEMENT AND BIDDING</p> <ul style="list-style-type: none"> • Advertise for Contractor • Complete Bidding Process • Prepare Contract • Award Contract
<p>Winter 2021</p>	<p>CONSTRUCTION PHASE</p>

Meeting Updates

- 11/15/18 - Steering Committee Meeting #1
- 1/31/19 - Public Information Meeting #1
- 2/25/19 – Technical Committee Meeting #1
- 2/28/19 - Steering Committee Meeting #2
- 3/14/19 - PLACE Task Force Meeting #1
- 3/25/19 - Steering Committee Meeting #3
- 4/18/19 - Public Open House #2
- 6/21/19 – Technical Committee Meeting #2
- 7/11/19 – PLACE Task Force Meeting #2
- **7/23/19 – Planning Commission Work Session**



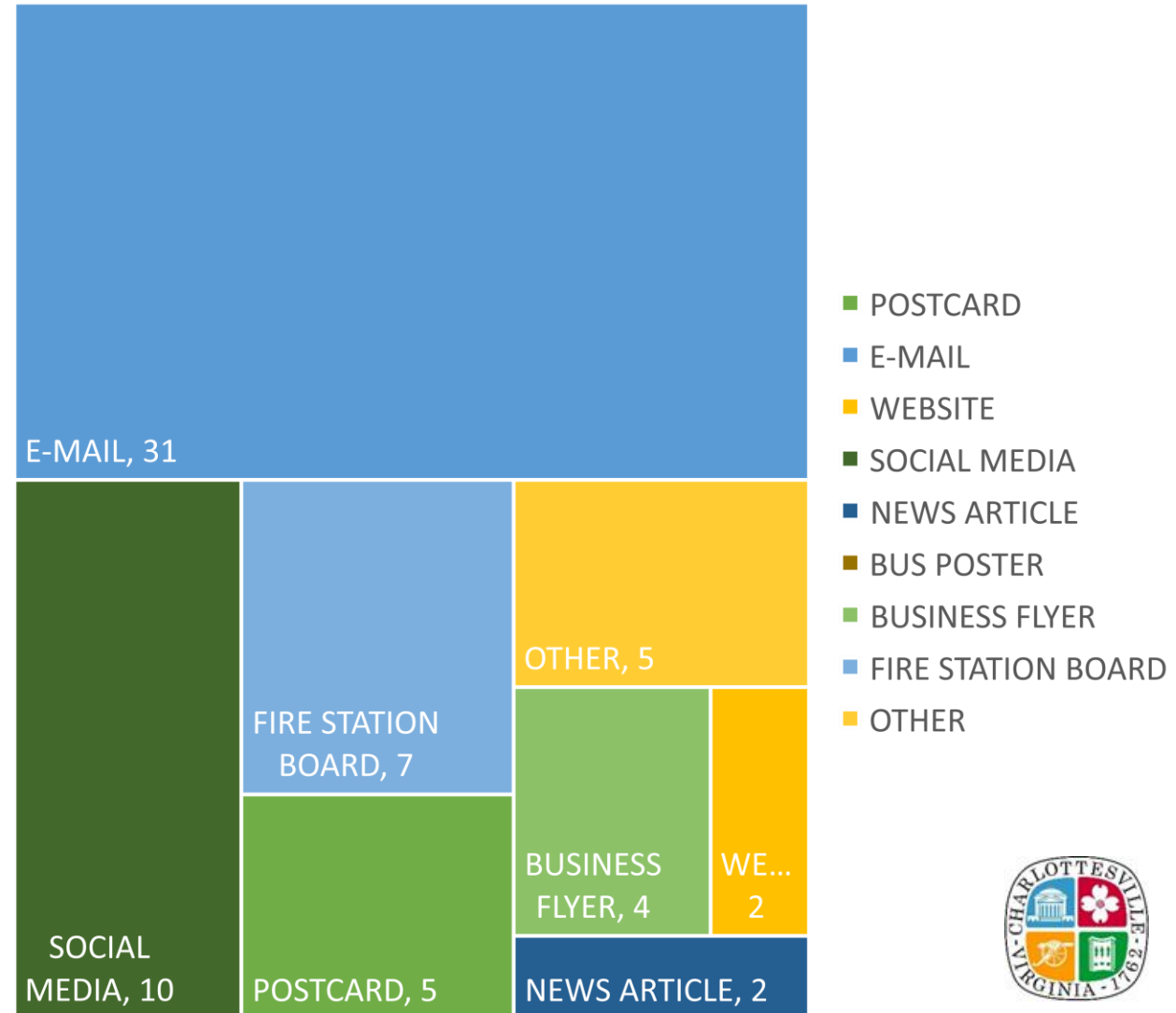


Overview of Public Outreach & Concept Design Development

Public Outreach

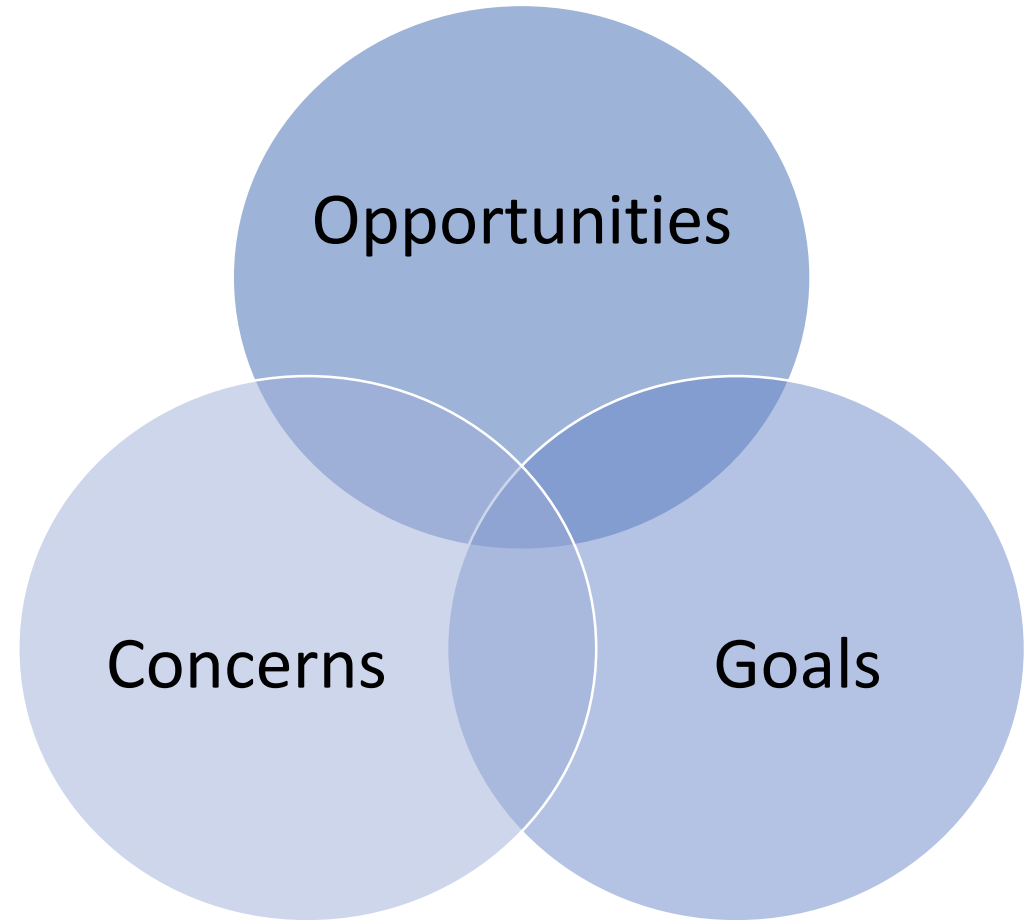
- Held 2 Public Meetings
- To Encourage Participation, Completed the Following Outreach:
 - Flyers to businesses along Fontaine Avenue
 - Flyers to UVA Housing
 - UVA bus advertisements
 - Message board in front of Fire Station (PCMS)
 - Direct mailings / E-mail
 - Social media

How Attendees Learned About Public Meetings

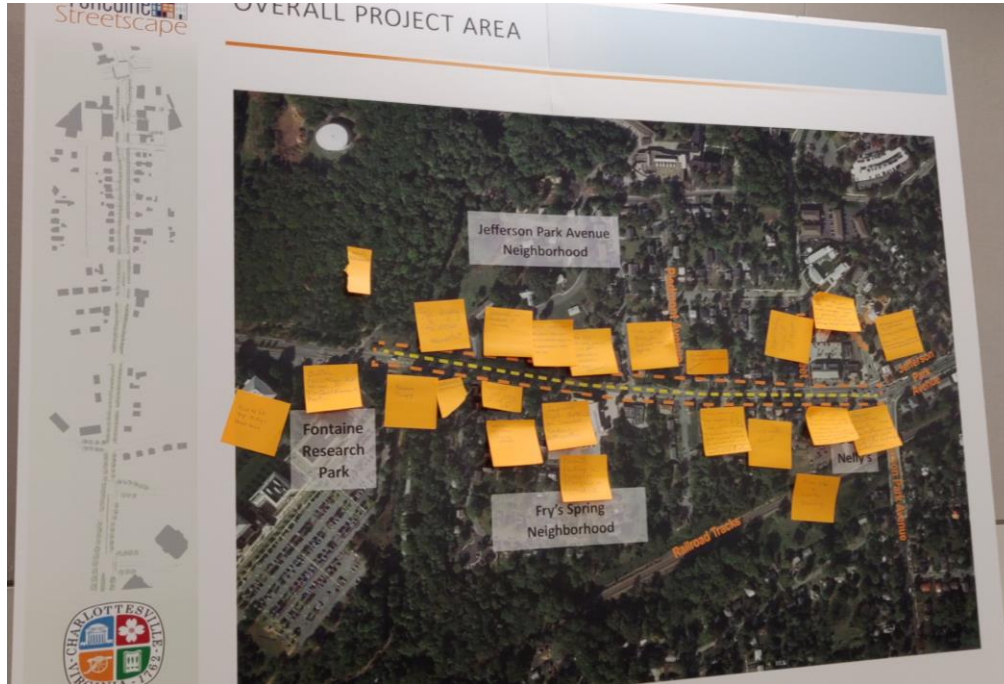


Steering Committee #1 – Key Findings

- **Goals:**
 - Safety for all users alleviate congestion
 - Create a sense of place
- **Concerns:**
 - Right of way and site limitations
 - Gap between City Limit and Research Park
- **Opportunities:**
 - Improve access management
 - Stormwater management
 - Beautification / gateway to Charlottesville
- **General:**
 - On-street parking not a priority
 - Need to account for trash / deliveries



Public Information Meeting #1 - Key Findings



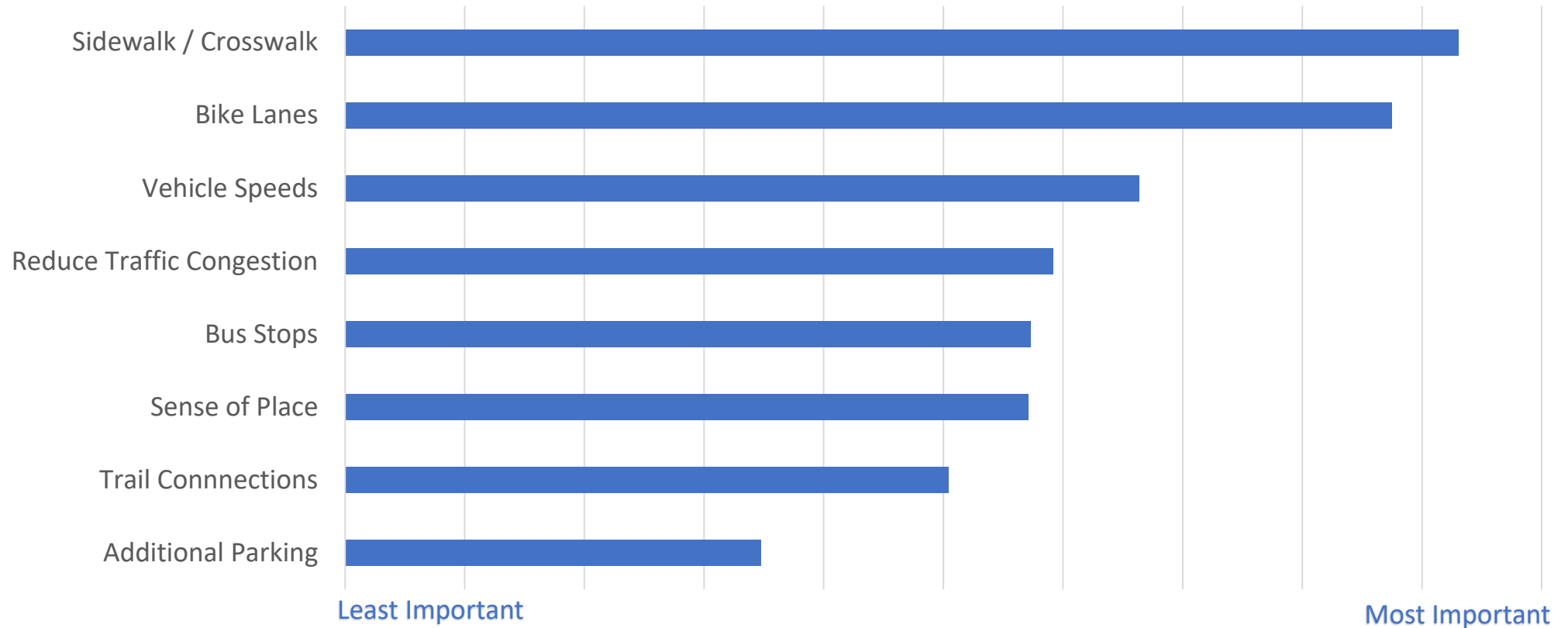
Common Feedback:

- Safe pedestrian crossings at side streets
- Add / widen sidewalks
- Provide more green space
- Preserve trees
- Safe routes for bicycles

Public Information Meeting #1 - Responses



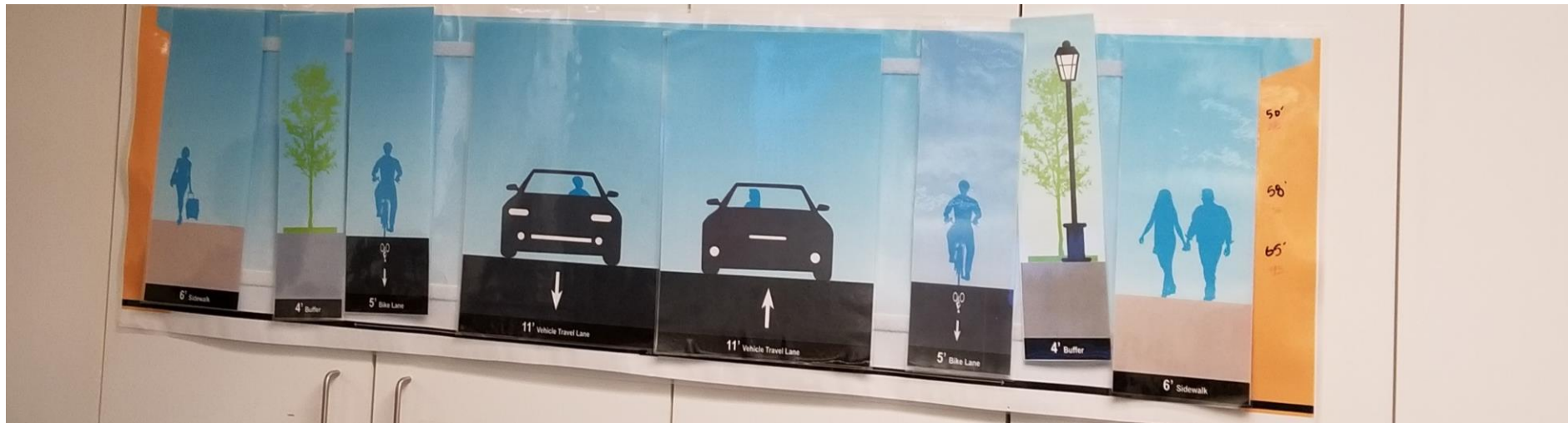
Importance of Future Conditions



Steering Committee #2 – Streetscape Layout

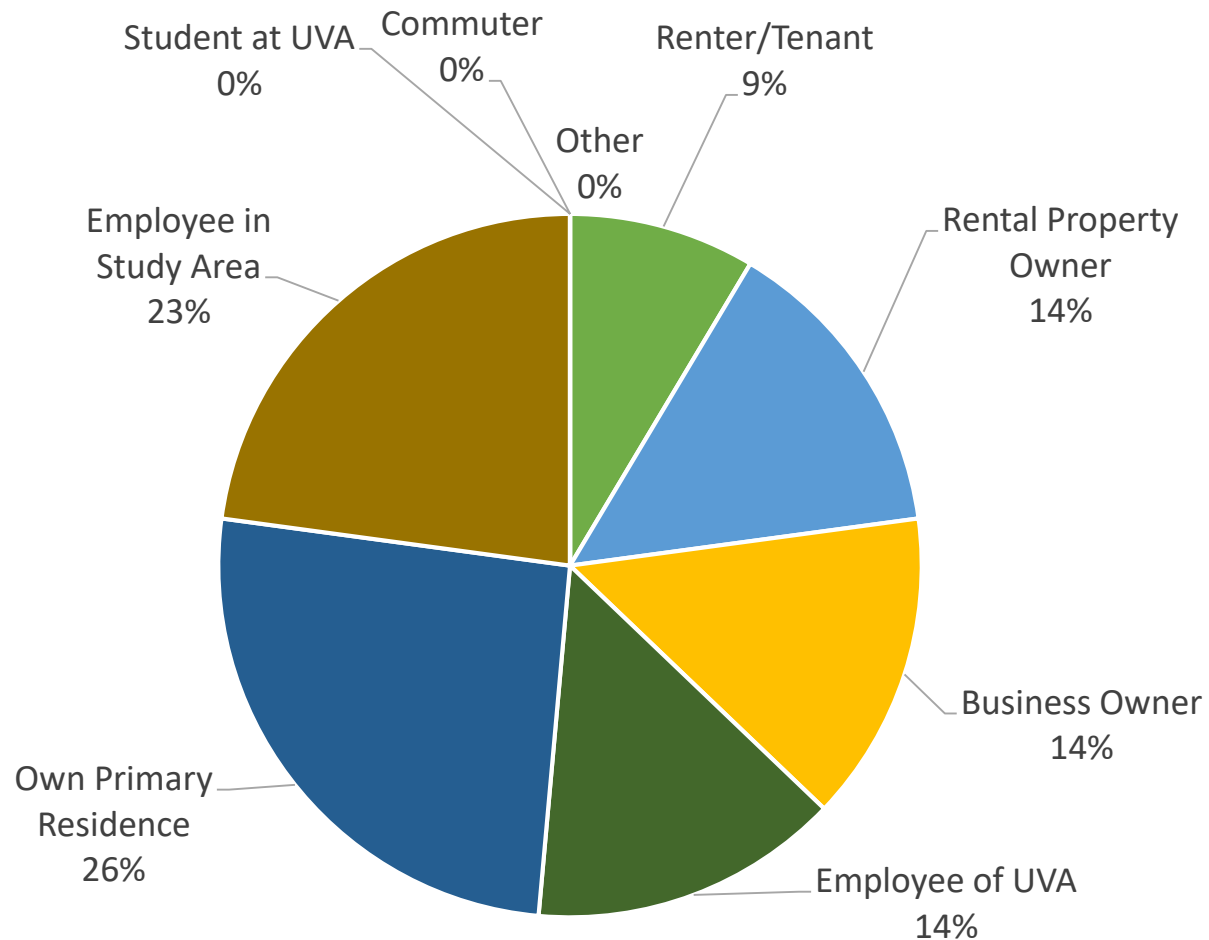
■ Key Feedback:

- On-street parking is not a priority (Steering Committee consensus)
- Focused on a typical section with dedicated bicycle lanes, preferably with a buffer, a landscape buffer strip and a sidewalk (minimum of 6')
- A 4' landscape buffer is not sufficient for most street trees



Public Open House #2 - Responses

INTEREST IN THE PROJECT: Public Open House #2



Interest in Project	Percentage
Renter/Tenant	9
Rental Property Owner	14
Business Owner	14
Employee of UVA	14
Own Primary Residence	26
Employee in Study Area	23
Student at UVA	0
Commuter	0
Other	0



HOW THE CORRIDOR IS UTILIZED

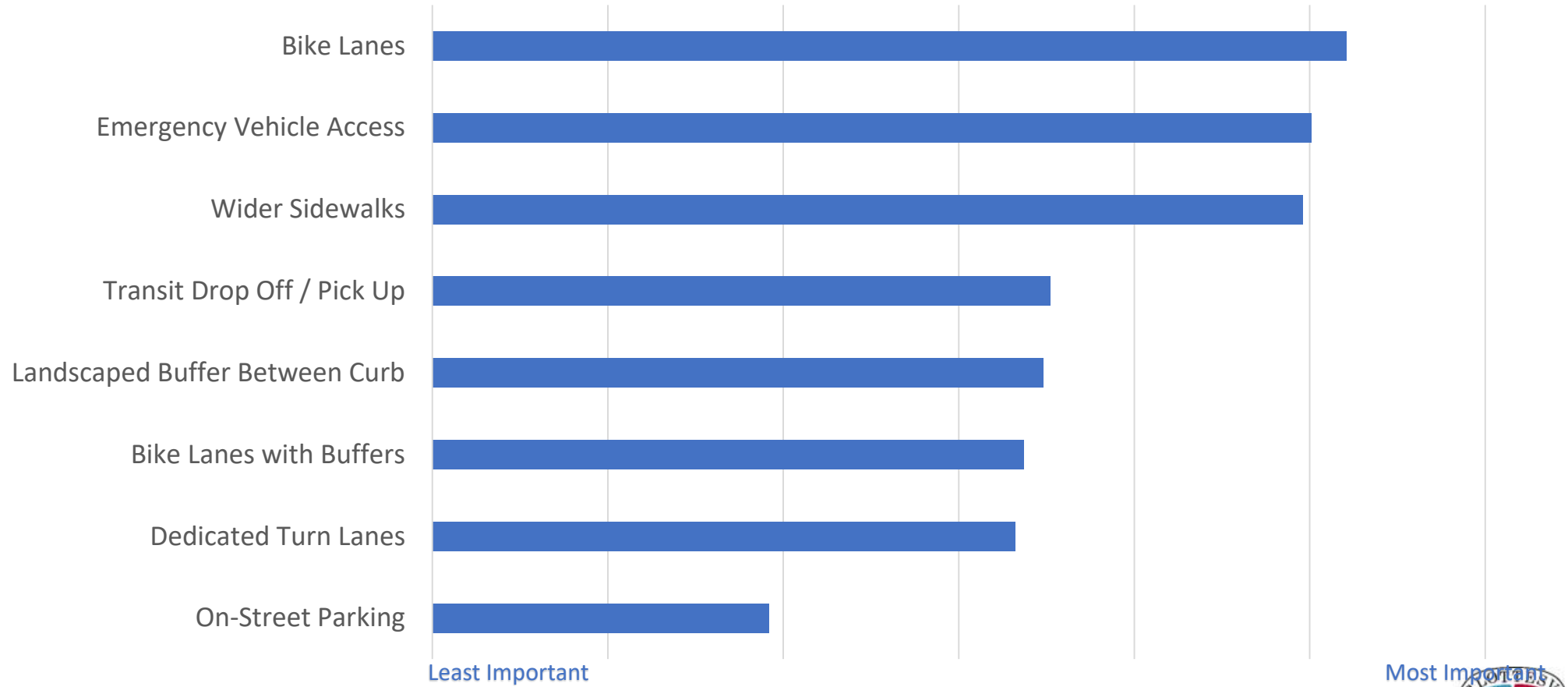
	BICYCLE ALONG FONTAINE	CROSS FONTAINE (PEDESTRIAN OR BICYCLIST)	ON-STREET PARKING	PUBLIC TRANSIT
WEEKLY	4	14	1	4
MONTHLY	6	6	6	5
YEARLY	5	4	1	7
NONE	13	7	23	16



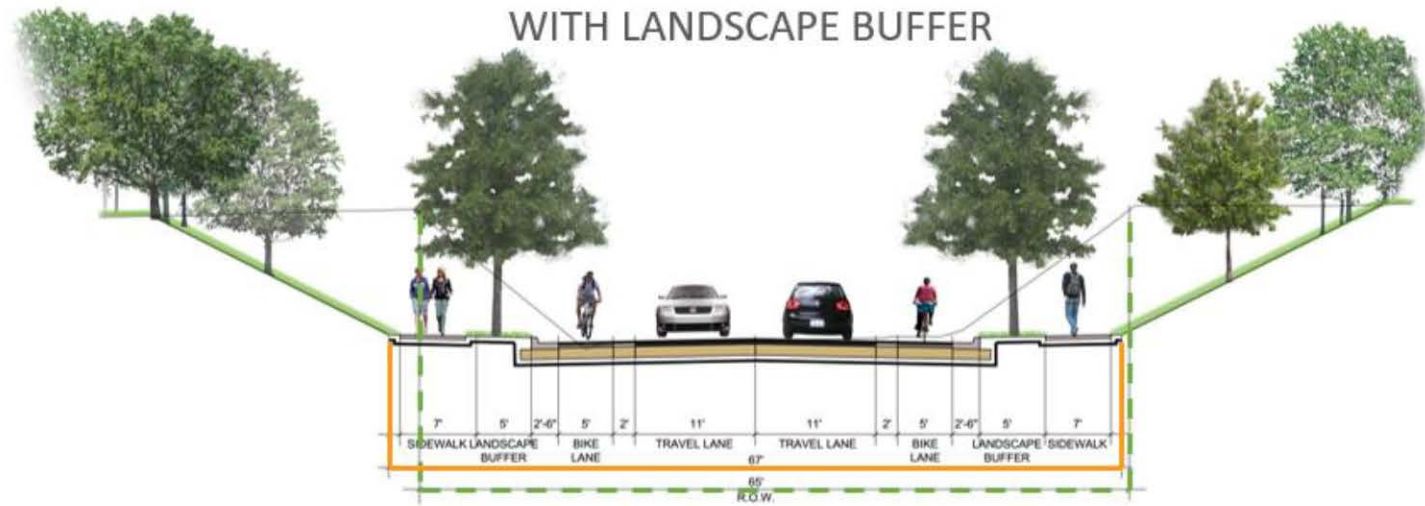
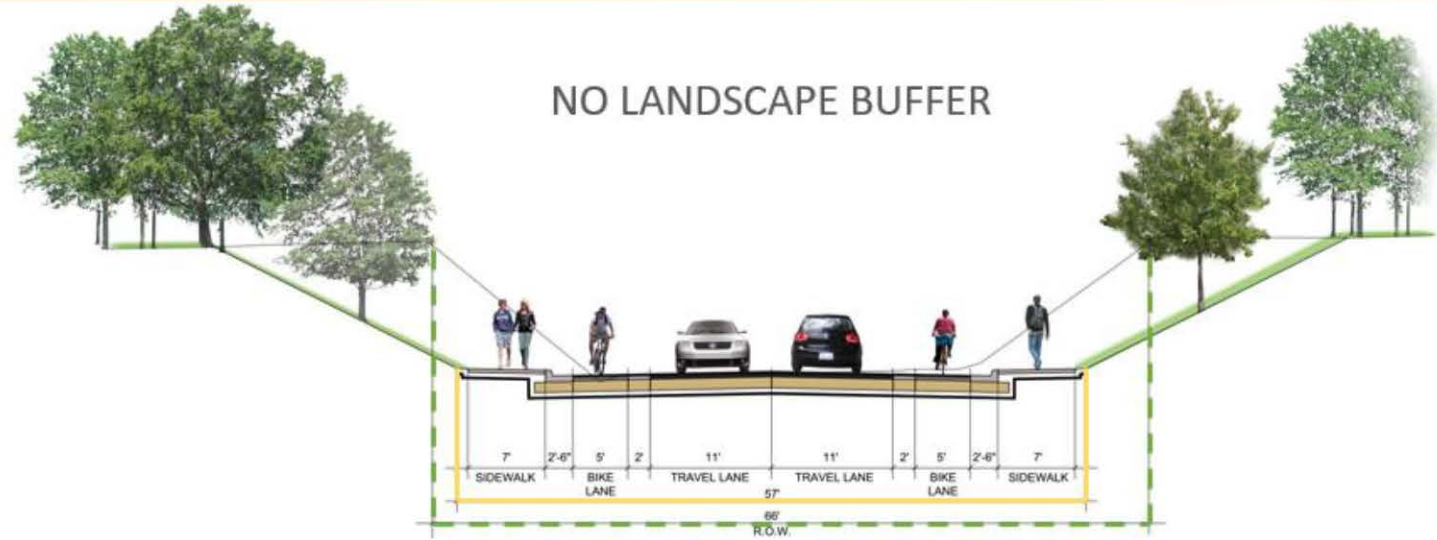
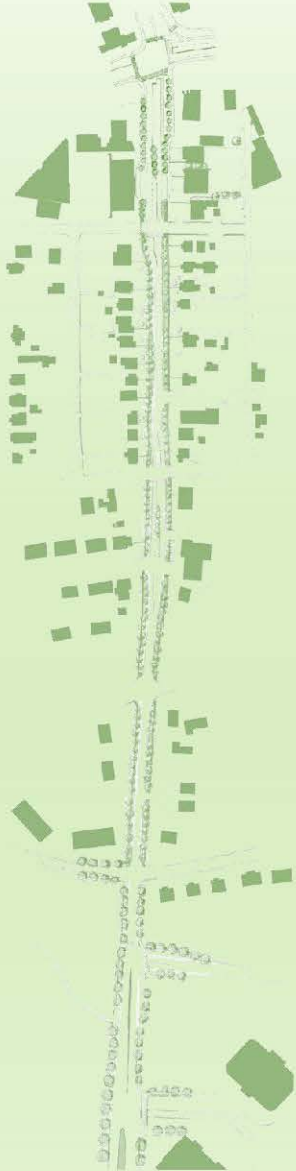
Public Open House #2 - Responses



Compiled Importance

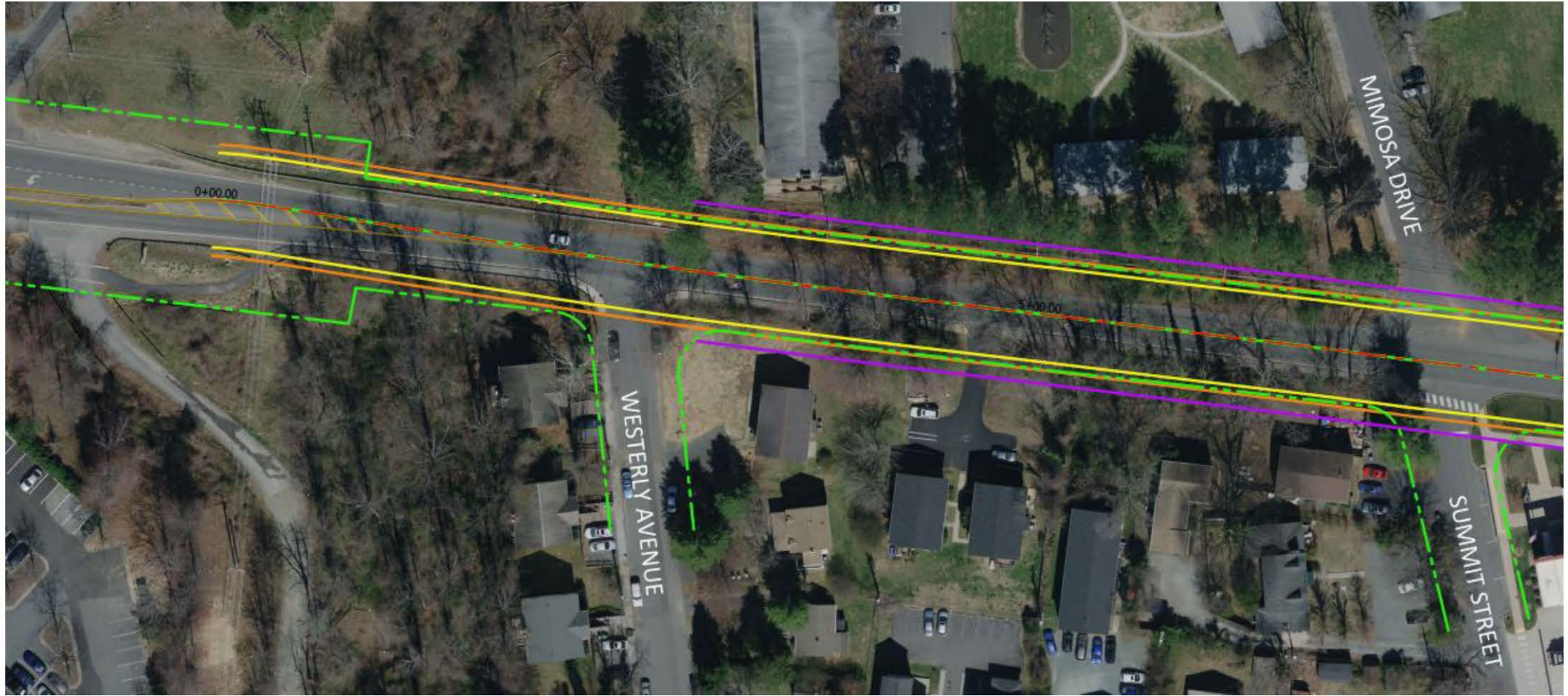
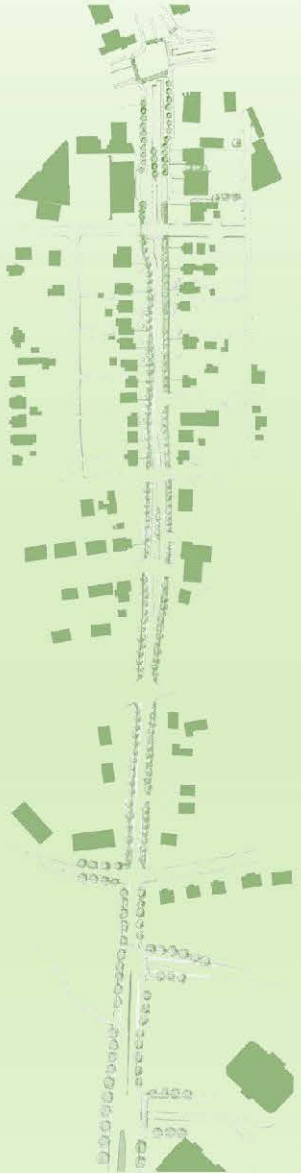


Design Concepts: City Limits to Summit Street

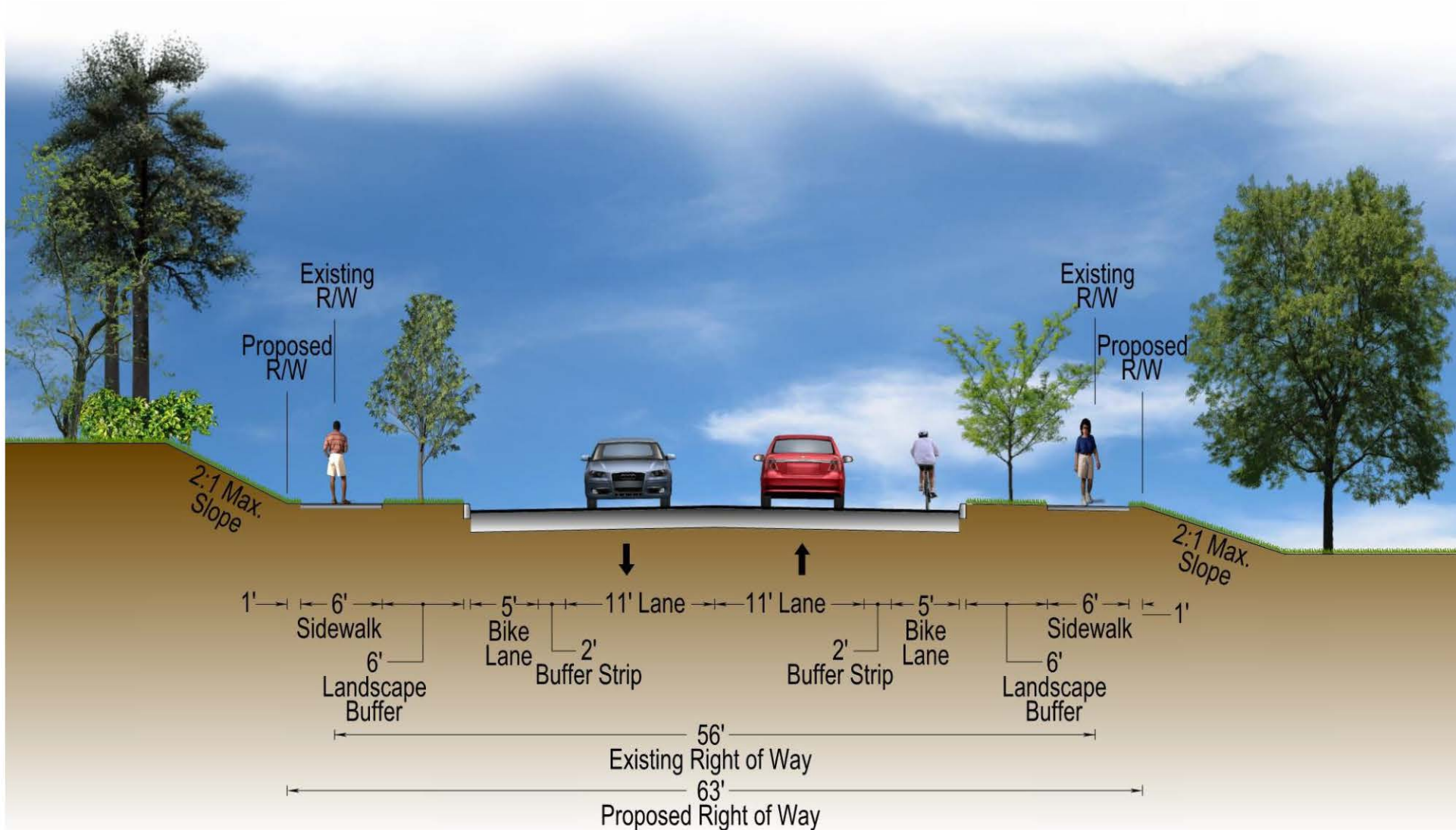


VIEWS LOOKING WEST

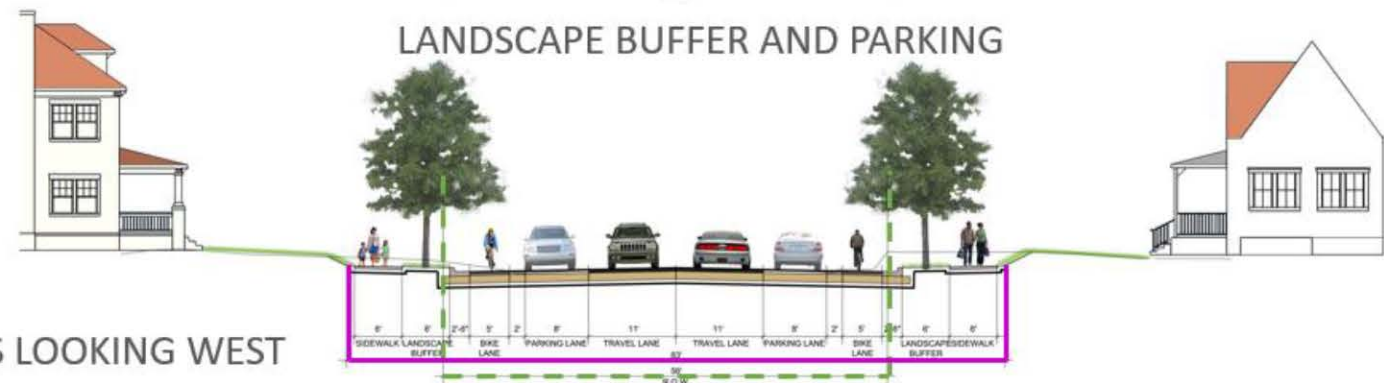
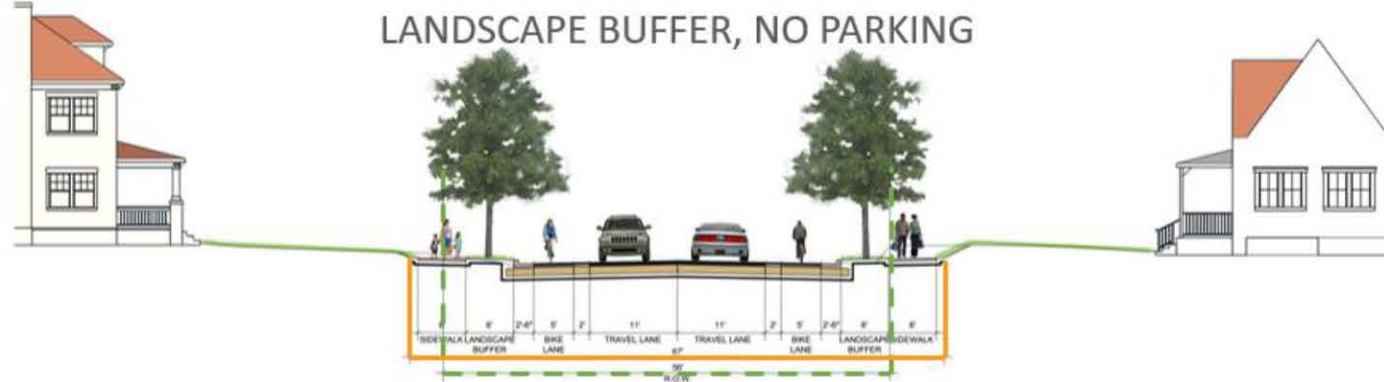
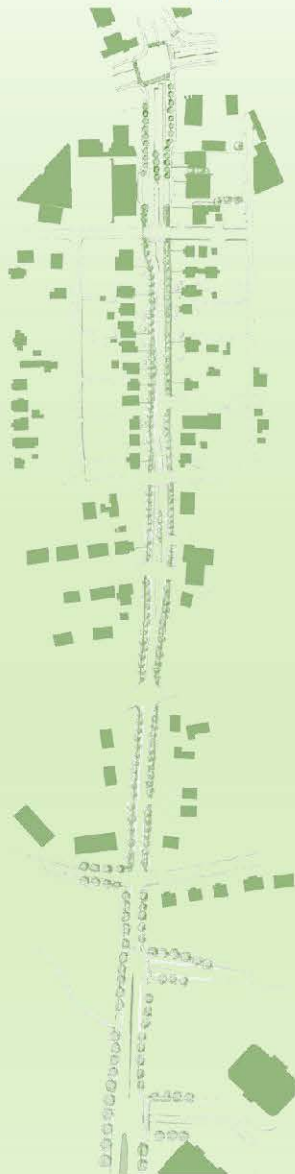
Design Concepts: City Limits to Summit Street



Design Concepts: City Limits to Summit Street



Design Concepts: Summit Street to Lewis Street

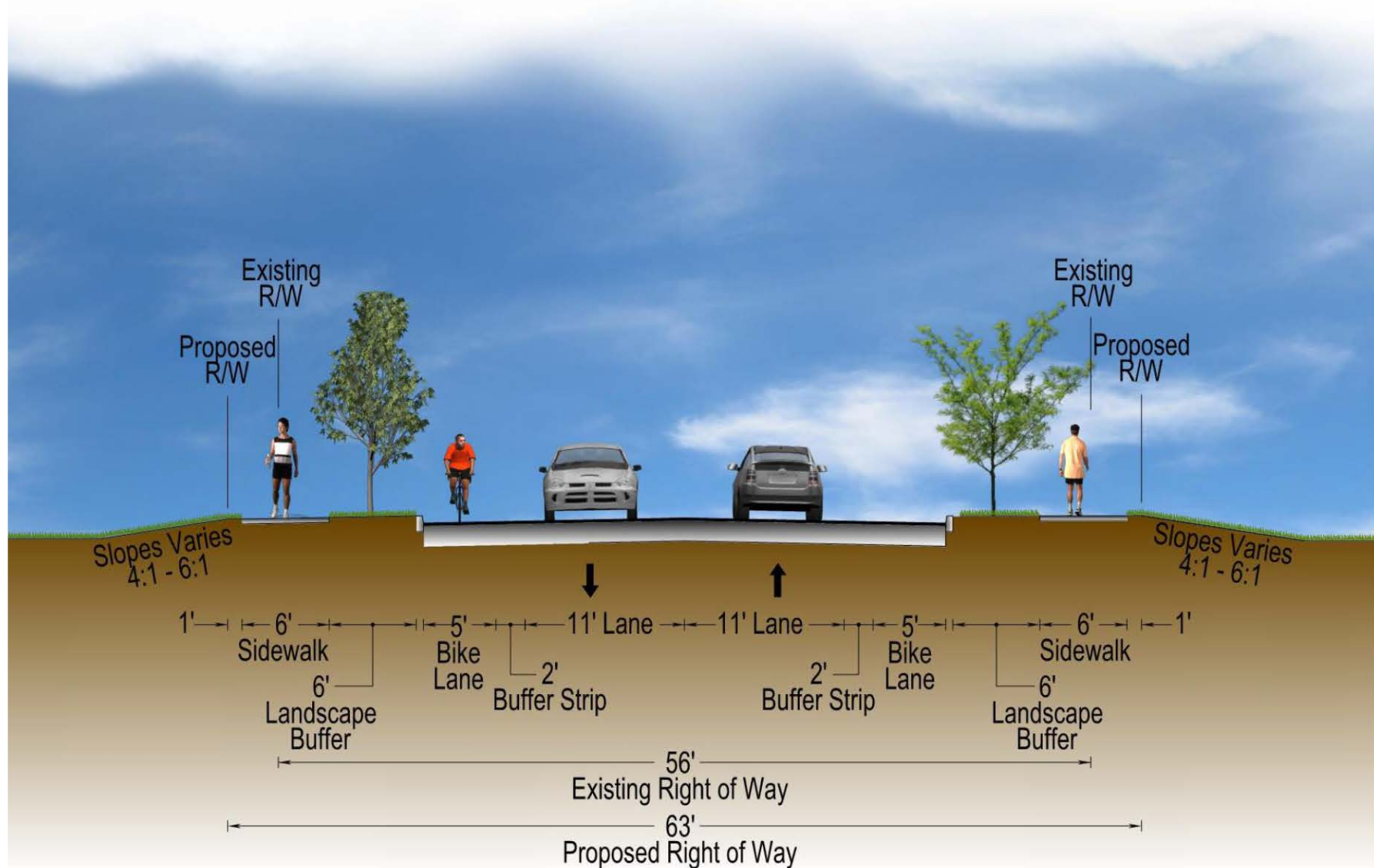
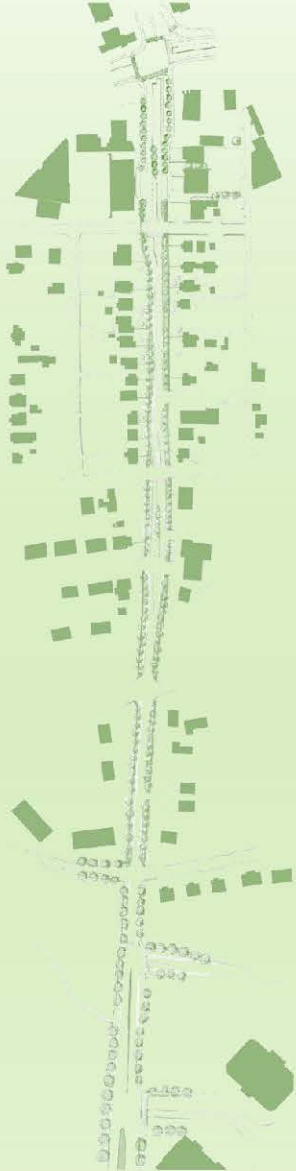


VIEWS LOOKING WEST

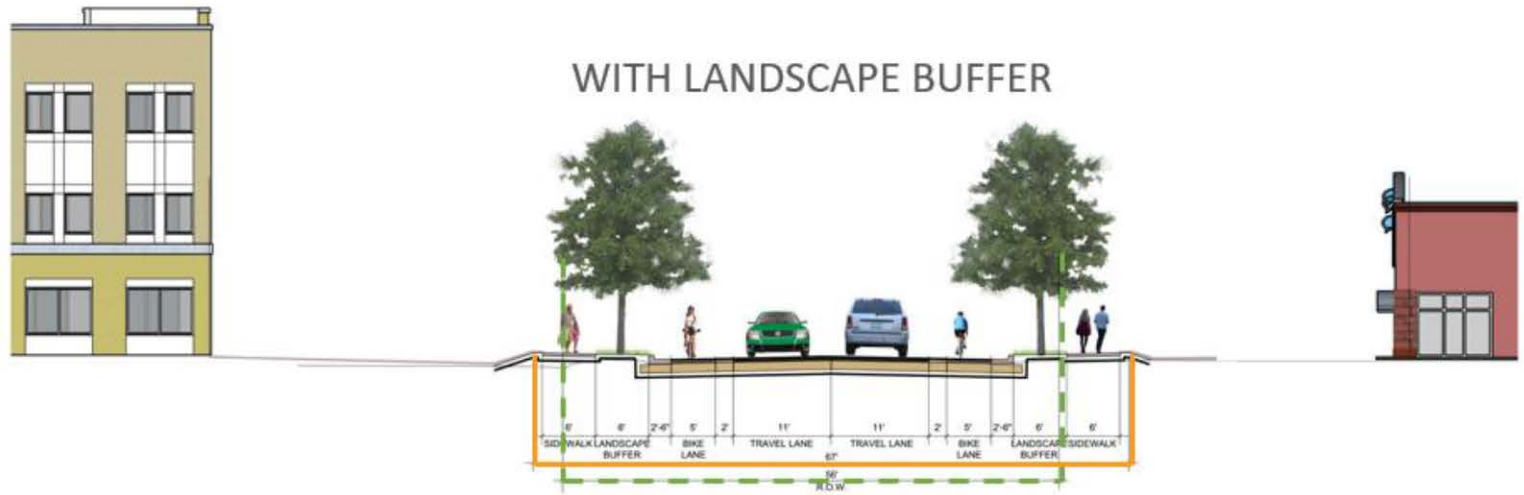
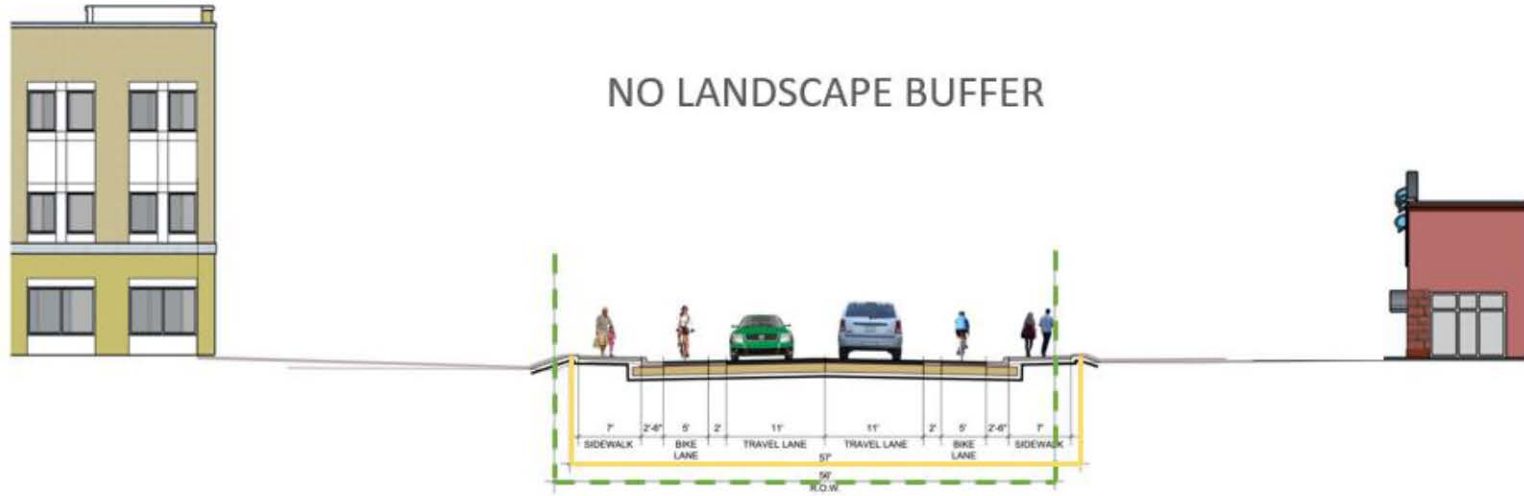
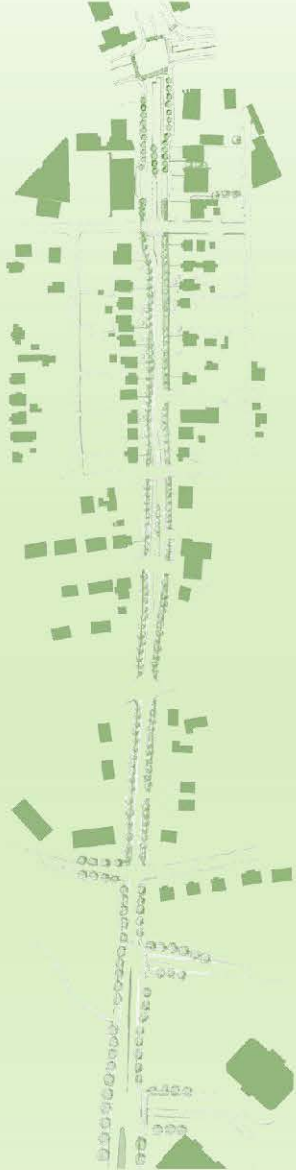
Design Concepts: Summit Street to Lewis Street



Design Concepts: Summit Street to Lewis Street



Design Concepts: Lewis Street to Jefferson Park Avenue

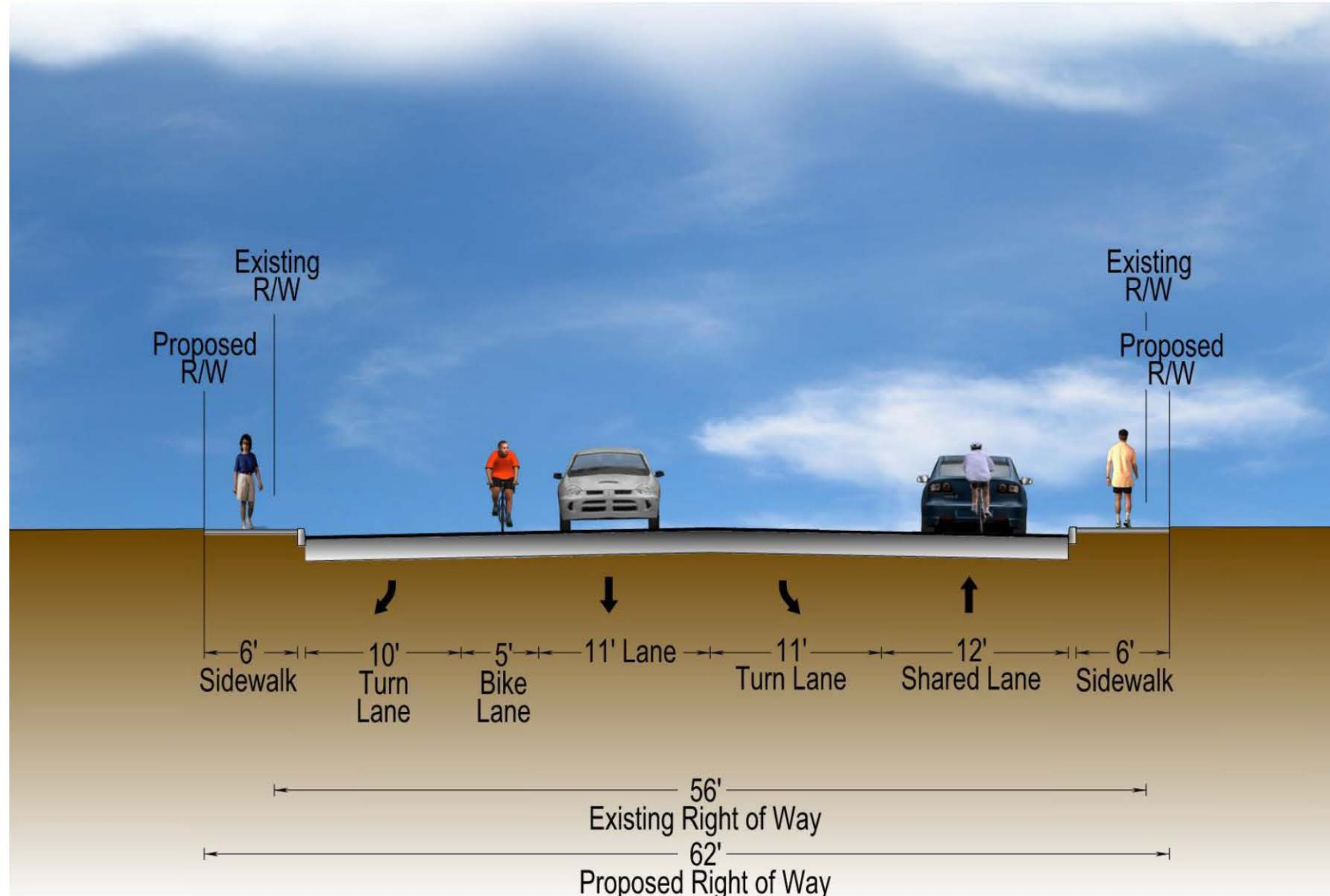


VIEWS LOOKING WEST

Design Concepts: Lewis Street to Jefferson Park Avenue



Design Concepts: Lewis Street to Jefferson Park Avenue





Review of Comprehensive Plan Consistency

Comprehensive Plan Consistency

Based on the City of Charlottesville's 2013 Comprehensive Plan

- Economic Development
 - Sense of Place
 - ▶ Develop a sense of place entering Charlottesville
 - Mixed Use
 - ▶ Enhances pedestrian connectivity throughout the corridor
 - Regional Cooperation
 - ▶ Albemarle County and UVA have been active on the Steering Committee
- Community Facilities
 - Fire Department / Emergency Rescue Services
 - ▶ Team has been working with the Fire Chief
 - Utility Infrastructure
 - ▶ Will maintain existing services to the neighborhood and businesses
 - Parks and Recreation (Access and Trails)
 - ▶ Provide access to existing trails and bicycle facilities



Comprehensive Plan Consistency

Based on the City of Charlottesville's 2013 Comprehensive Plan

- Economic Sustainability
 - Sustaining Business
 - ▶ Improve access to local businesses
- Environment
 - Urban Landscape & Healthy Habitat / Water Resources Protection
 - ▶ Implement green infrastructure practices for stormwater management
- Transportation
 - Complete Streets
 - ▶ Bicycle lanes and enhanced sidewalks incorporated into the corridor
 - ▶ Street trees in landscape buffers
 - ▶ Safe, convenient crossing alternatives
 - ▶ Consistent application of ADA standards
 - Land Use & Community Design
 - ▶ Design to promote walking and bicycling



Comprehensive Plan Consistency

Based on the City of Charlottesville's 2013 Comprehensive Plan

■ Transportation (Continued)

- Infrastructure Funding
 - ▶ Fully funded through SmartScale (HB2)
- Historic Preservation & Urban Design
 - ▶ Recognize and respect the distinct characteristics of the neighborhood
- Resource Inventory
 - ▶ Identified cultural and historic resources prior to the development of concepts
- Comprehensive Approach
 - ▶ Consulted zoning maps to ensure compliance with goals and impacts
 - ▶ Coordination underway with Public Works and Parks Departments
- Entrance Corridors
 - ▶ Emphasize placemaking to create a sense of place and character with landscaping



Next Steps

- Refine Concepts
- Steering Committee Meeting #4 – Late Summer / Fall

