



OLD KING LUMBER BUILDING
CHARLOTTESVILLE, VA

perspective 1

APRIL 29, 2008

RECEIVED

APR 29 2008

NEIGHBORHOOD DEVELOPMENT SERVICES

McKEECARSON





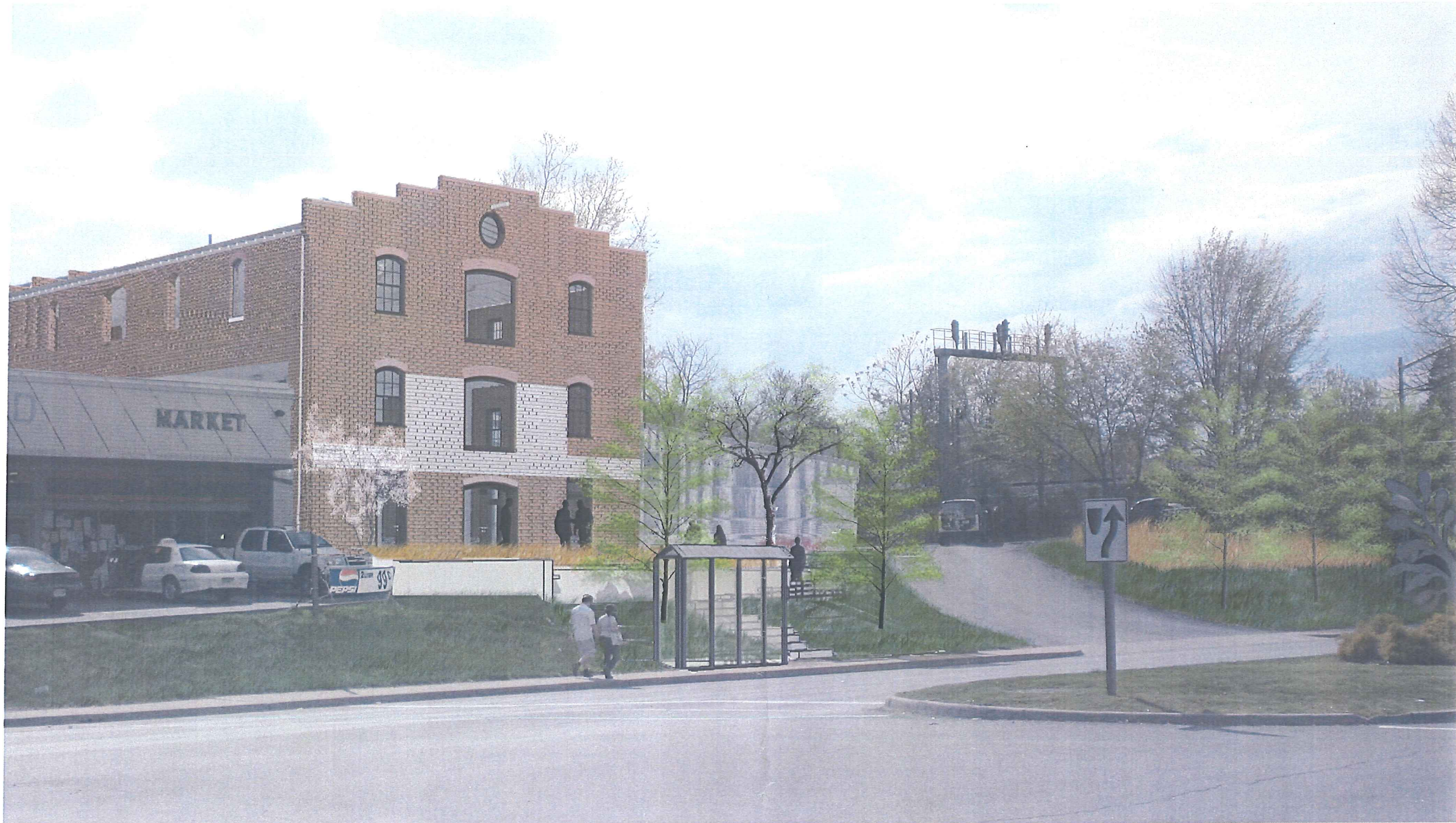
OLD KING LUMBER BUILDING
CHARLOTTESVILLE, VA

perspective 2

APRIL 29, 2008



McKEECARSON



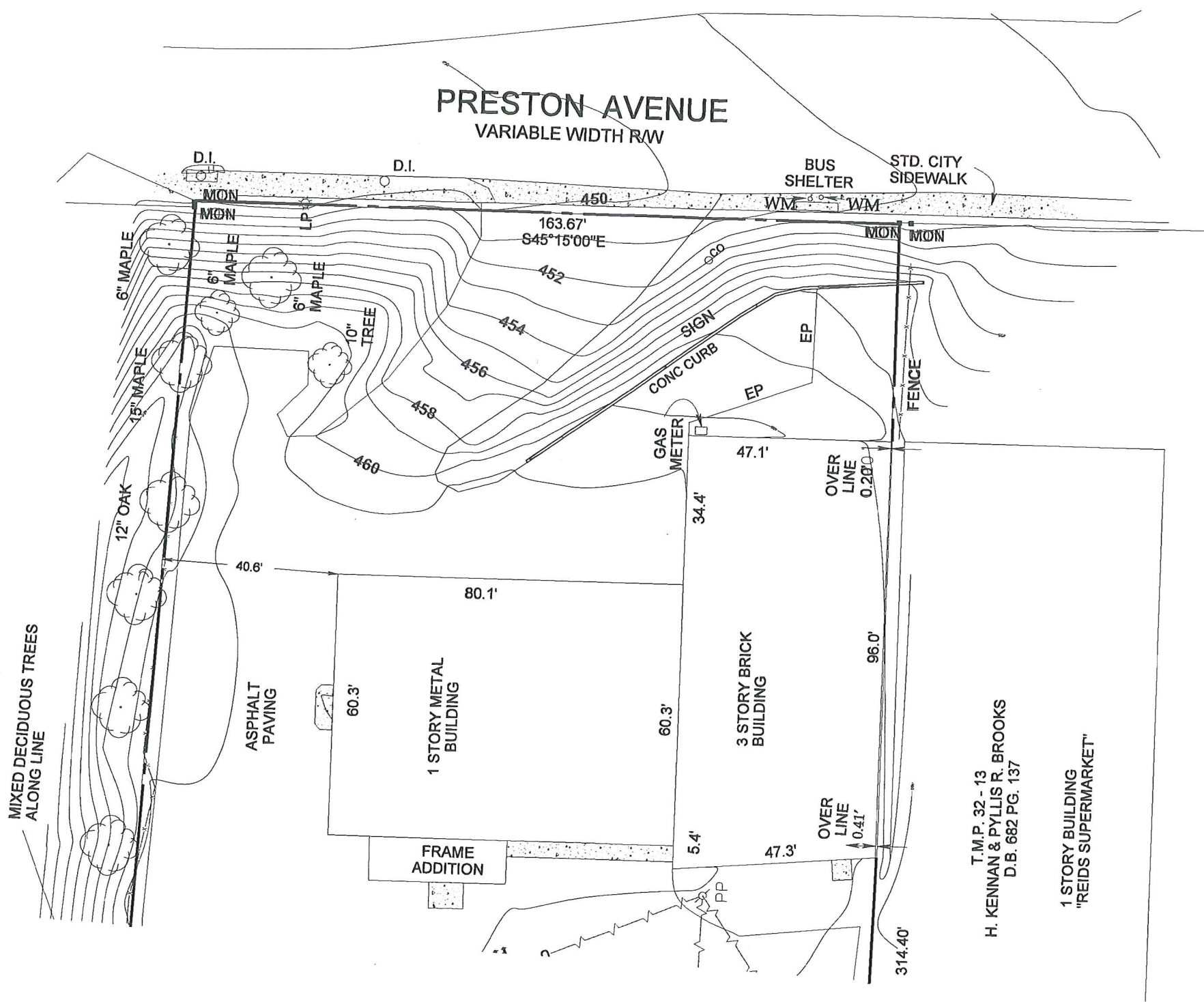
OLD KING LUMBER BUILDING
CHARLOTTESVILLE, VA

McKEECARSON

perspective 3

APRIL 29, 2008





T.M.P. 32 - 13
 H. KENNAN & PYLLIS R. BROOKS
 D.B. 682 PG. 137

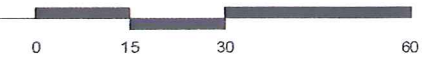
1 STORY BUILDING
 "REIDS SUPERMARKET"

OLD KING LUMBER BUILDING
 CHARLOTTESVILLE, VA

existing conditions plan

APRIL 29, 2008

COMMONWEALTH
LAND
SURVEYING, LLC
 3042-D BERKMAR DRIVE
 CHARLOTTESVILLE VIRGINIA 22901
 PH: 434-973-0513



McKEECARSON

Grasses :
Schizachyrium scoparium 'The Blues'

Grasses :
Calamagrostis x acutifolia 'Karl Forester'

Groundcover :
Carex pennsylvanica

Shrubs :
Cornus sericea

Street tree :
Fraxinus americana 'Autumn Purple'
White Ash
Specimen tree :
Platanus acerifolia 'Bloodgood'
London Plane
Grasses :
Schizachyrium scoparium 'The Blues'
Grasses : *Little bluestem*
Festuca glauca 'Elijah Blue'
Understory tree : *Blue fescue*
Amelanchier arborea 'Autumn Brilliance'
Serviceberry

Feather reed grass

PA Sedge

PROPERTY LINE

TERRACE

TERRACE

BUS STOP

FFE : 460.00

FFE : 462.00

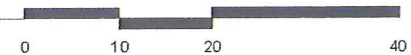
GALLERY

OLD KING LUMBER BUILDING

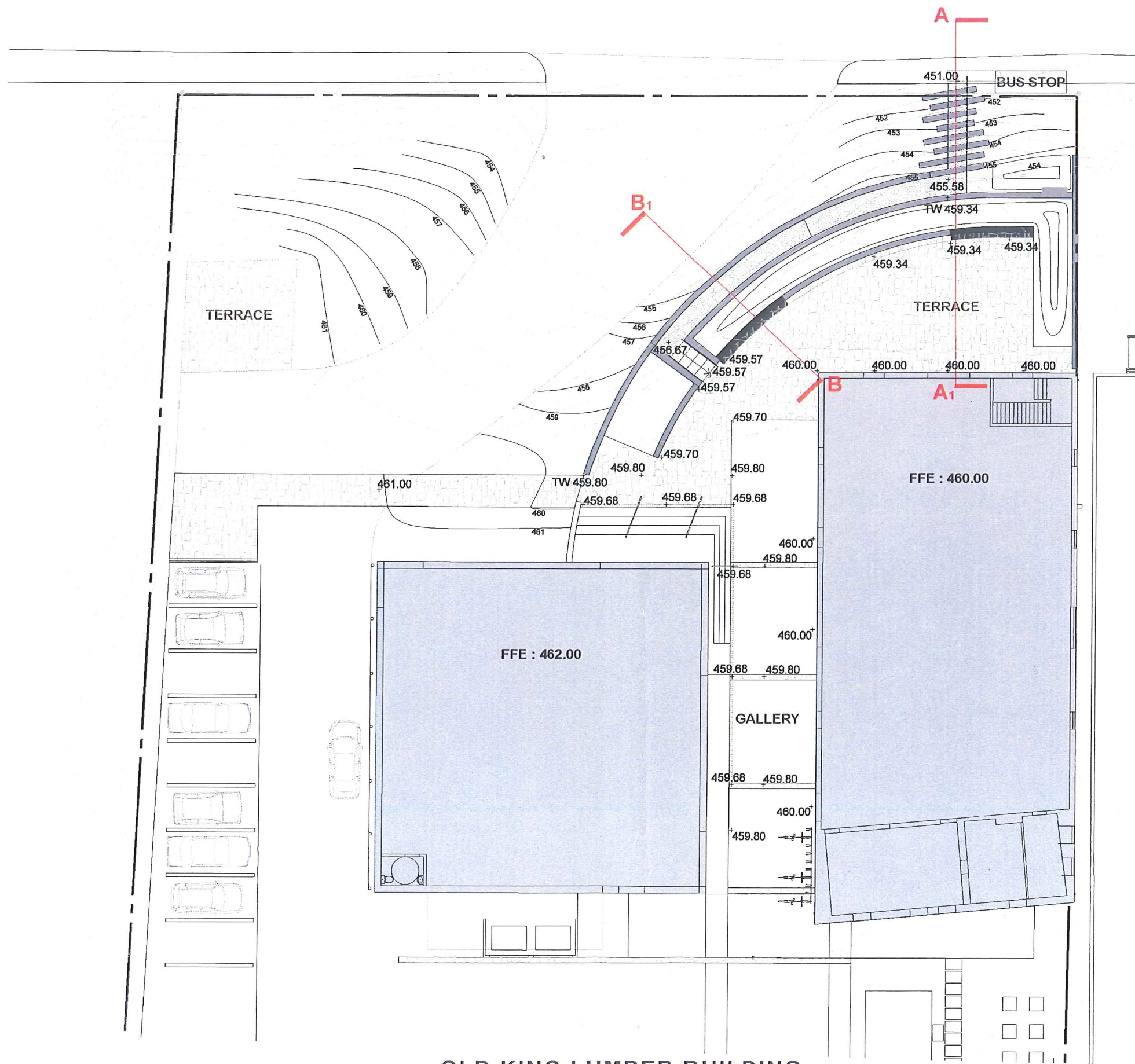
CHARLOTTESVILLE, VA

planting plan

APRIL 29, 2008



McKEECARSON



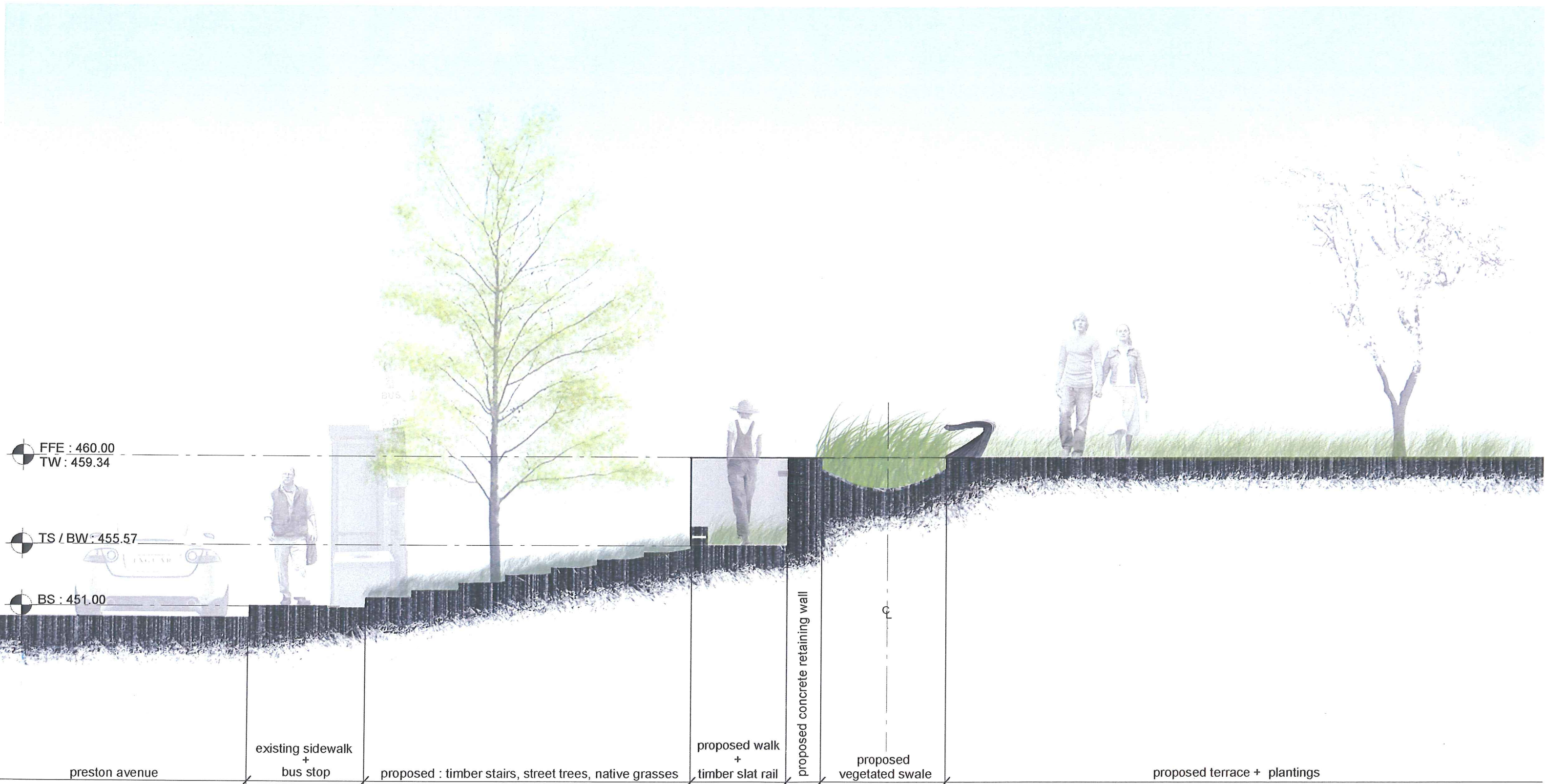
OLD KING LUMBER BUILDING
CHARLOTTESVILLE, VA

grading plan

APRIL 29, 2008



McKEECARSON



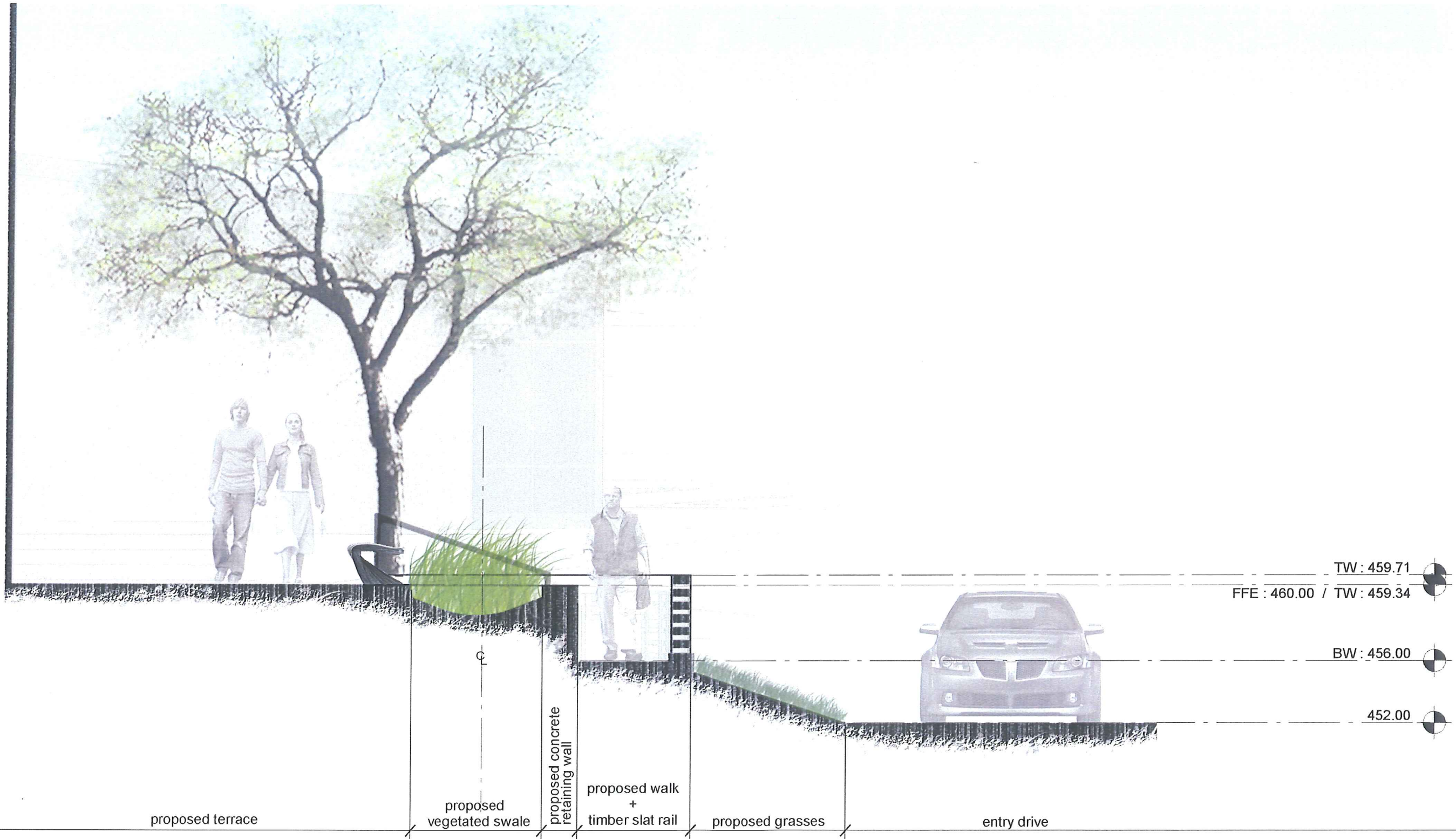
OLD KING LUMBER BUILDING
 CHARLOTTESVILLE, VA

McKEECARSON

section A - A1

APRIL 29, 2008





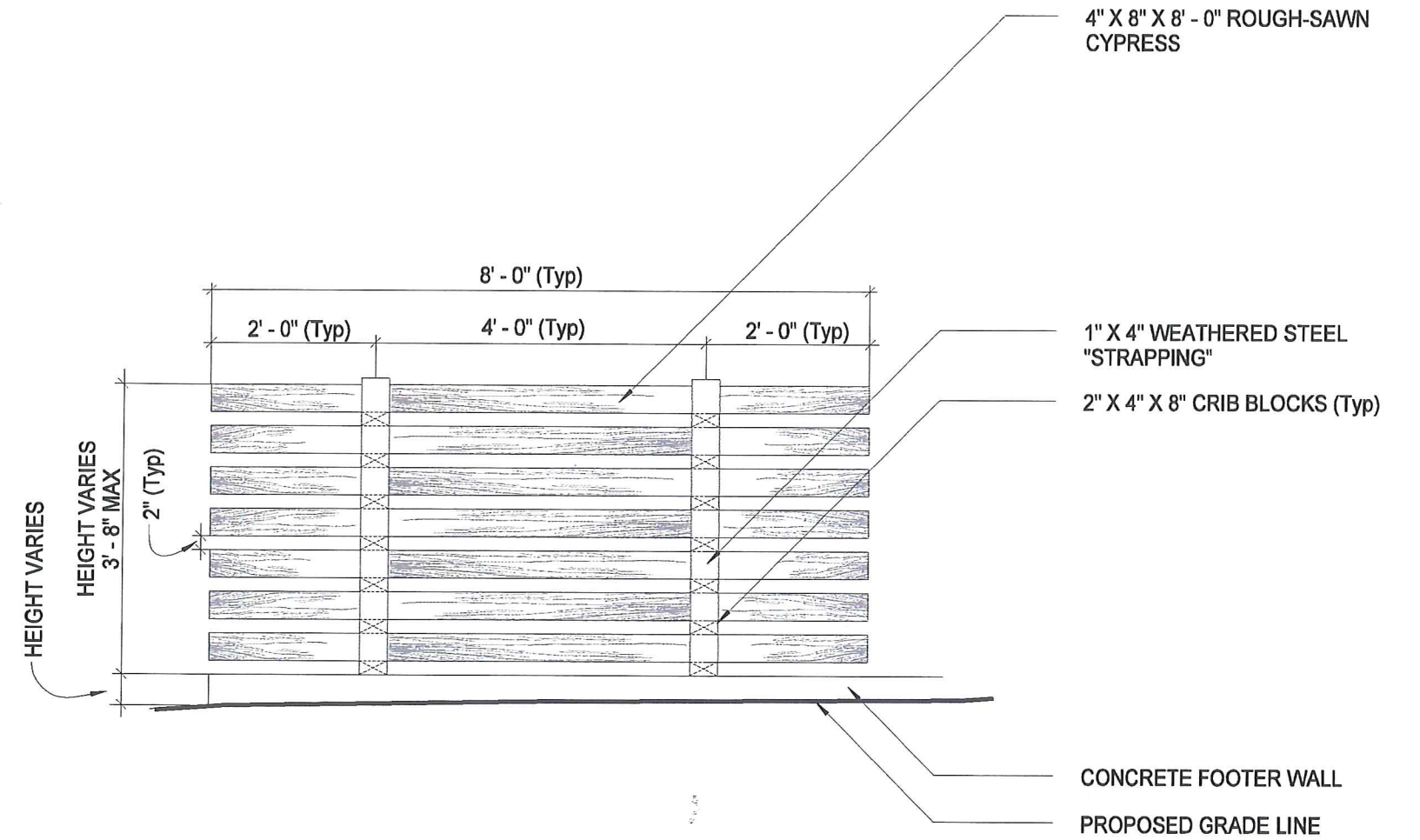
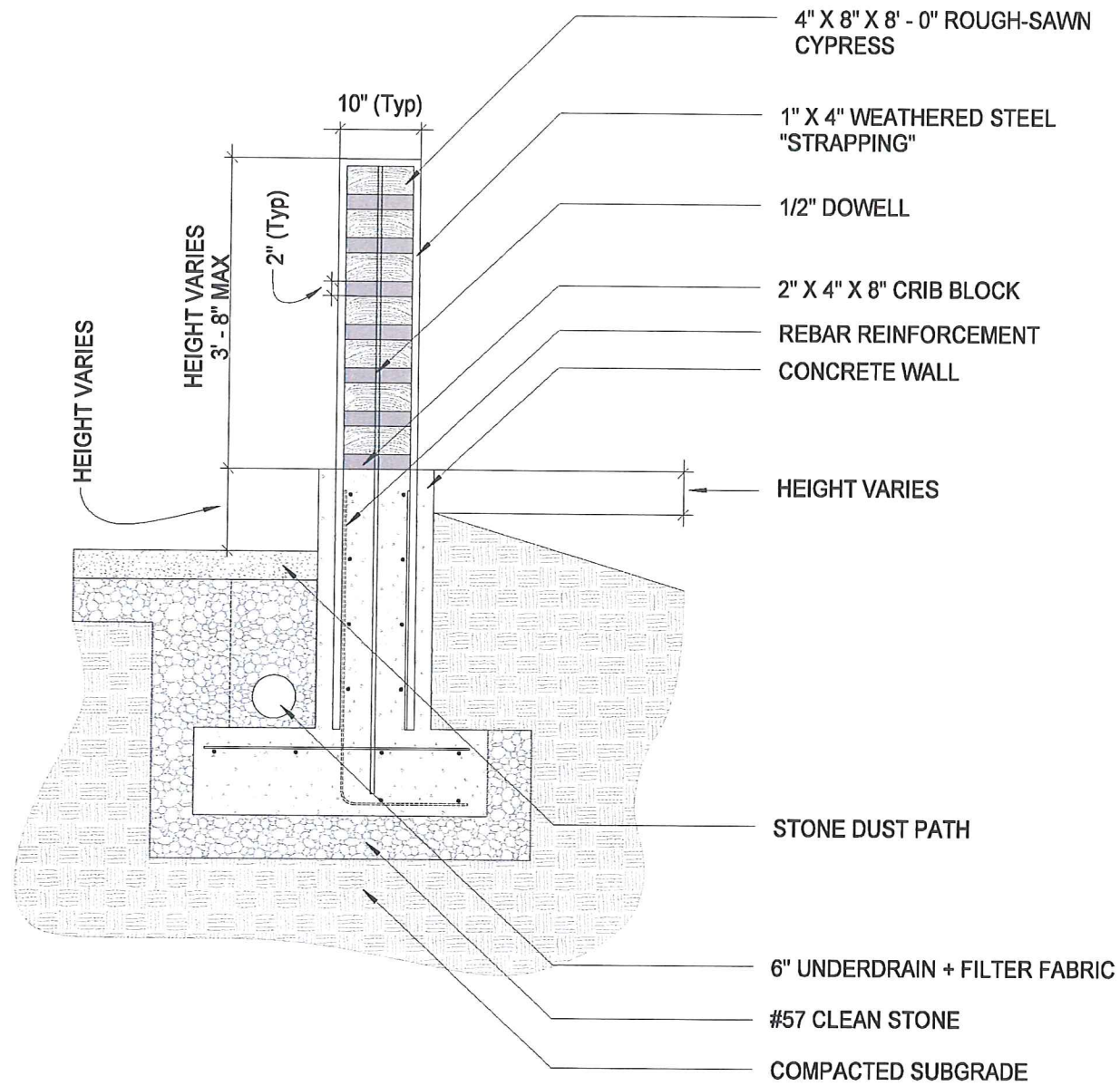
OLD KING LUMBER BUILDING
 CHARLOTTESVILLE, VA

section B - B1

APRIL 29, 2008



McKEECARSON



○ SLAT WALL : section 1/2" = 1' - 0"

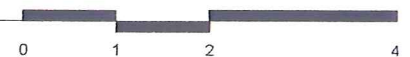
○ SLAT WALL : front elevation 1/2" = 1' - 0"

OLD KING LUMBER BUILDING
CHARLOTTESVILLE, VA

McKEECARSON

schematic wall details

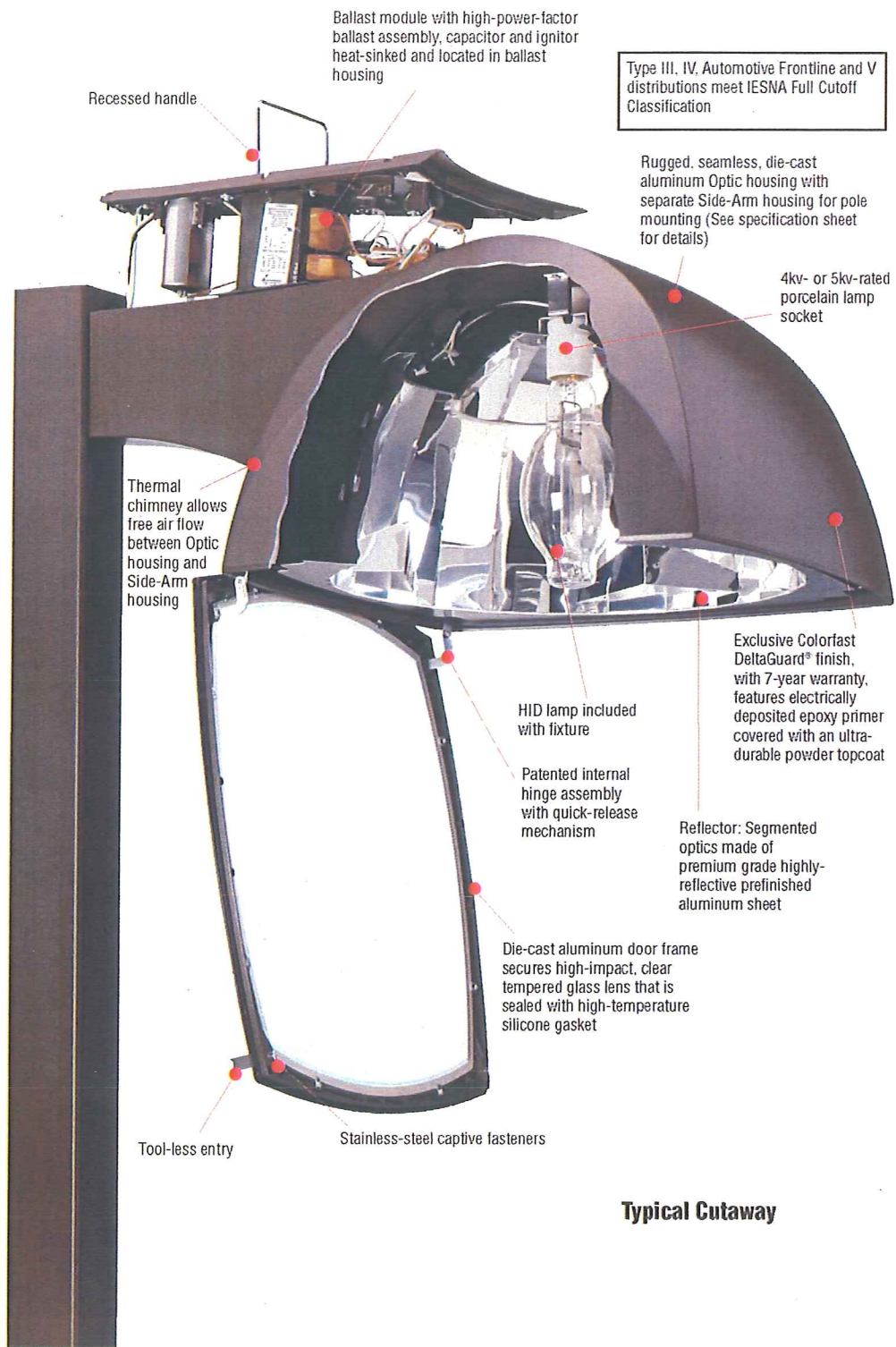
APRIL 29, 2008



AeroDome

In response to the increasing demand for an affordable architectural area light, we've created the AeroDome™, a stylish fixture with the performance, quality, ease of installation and pricing that our customers have wanted.

This handsome addition to our range of area lights features excellent photometric performance that is well-suited to large commercial lots with strict cutoff and uniformity codes. The AeroDome achieves higher footcandle averages, minimums and improved uniformities with an IES Full Cutoff Classification when compared to a traditional horizontal lamp fixture. In addition, using AeroDome fixtures can help reduce the number of poles and fixtures required in some applications. Contact our Application Engineering Department for more information.



Typical Cutaway

RUUD[®]
LIGHTING

Optics

Four vertical lamp optical systems are available: IES Type III and IV (incrementally rotatable @ 90°), Square Type V (quadrate) optics (fixed) and Automotive Frontline. Reflectors made of premium grade, highly-reflective, pre-finished aluminum sheet.

Lens

High-impact, clear tempered glass lens secured to die-cast aluminum door frame and sealed with high-temperature silicone gasket seals lens from water and insects. Lens assembly features tool-less, quick-release mechanism for easy maintenance.

Lamps

20-inch housings accommodate mogul-base clear lamps (ED28 reduced envelope lamp for 320W–400W PSMH and 400W MH). 25-inch housings also accommodate mogul-base clear lamps (BT37 reduced envelope lamp for 1000W PSMH and 1000W MH, ED37 for 1000W HPS). Pulse-rated porcelain enclosed, 4kv (5kv for 750W & 1000W PSMH) rated lamp socket.

Ballast

All fixtures are standard with a high-power-factor ballast. The majority of Flood/Area fixtures are supplied with a multi-volt ballast. In the U.S., the standard ballast includes 120, 208, 240 and 277 volts; in Canada, the standard ballast includes 120, 277 and 347 volts.

Housing

Side-Arm Mount: Optic and Side-Arm housing made of seamless, die-cast aluminum. Electrical components contained in mounting arm assembly are heat-sunk. Side-Arm mount housing features thermal chimney that allows free air flow between Optic housing and Side-Arm housing, thereby extending electrical component life. The die-cast aluminum Side-Arm cover/gear tray is sealed with silicone gasket.

Post-Top Mount: Ballast module with high-power-factor ballast assembly, capacitor and ignitor located in Post-Top hub. The die-cast aluminum hub cover/gear tray is sealed with a silicone gasket. The ballast is heat-sunk.

Mounting

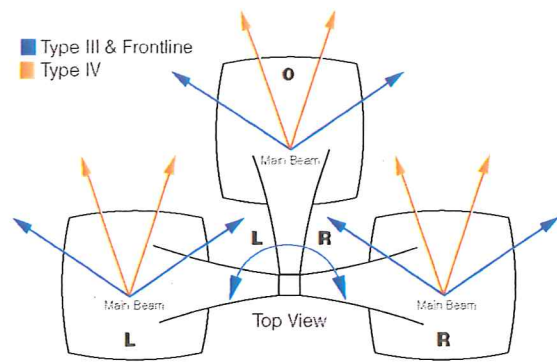
Mounting options include an extended Side-Arm or Round Tube Center Direct Post-Top. Side-arm casting includes thermal chimney to allow free airflow between the optical housing and arm. This feature separates the ballast assembly and Optic housing, thereby extending electrical component useful life.

Finish

Exclusive Colorfast DeltaGuard® finish features an E-coat epoxy primer with medium bronze ultra-durable powder topcoat, providing excellent resistance to corrosion, ultraviolet degradation and abrasion. The finish is covered by our seven-year limited warranty.

Labels

UL and cUL Listed for wet locations.



Top View of AeroDome with Side-Arm Mount with Rotatable Optic

Blue Arrows = Type III main beam direction
Orange Arrows = Type IV main beam direction

AeroDome Type III and IV optics can be rotated 90 degrees to meet site light distribution requirements while retaining the visual orientation of the AeroDome housing and pole. Rotatable optics are factory set or field rotatable on the Side-Arm Mount and field rotatable in the Round Tube Center Post-Top Mount.

AeroDome™ Series Mountings



Side-Arm Mount
Mounting Code "O", "L" & "R"

O = Side-Arm Mount with optic in standard configuration
L = Side-Arm Mount with optic rotated properly to install fixture rotated 90° to the left of standard configuration
R = Side-Arm Mount with optic rotated properly to install fixture rotated 90° to the right of standard configuration

Die-cast aluminum mounting arm attaches fixture in a fixed horizontal position to the side of a square pole. A steel backing plate inside the pole secures the fixture. A round pole adaptor accessory is also available.



Post-top Mount
Mounting Code "H"

Fabricated supporting yoke comprised of extruded aluminum round tubes and cast aluminum hub that supports fixture housing directly over pole.

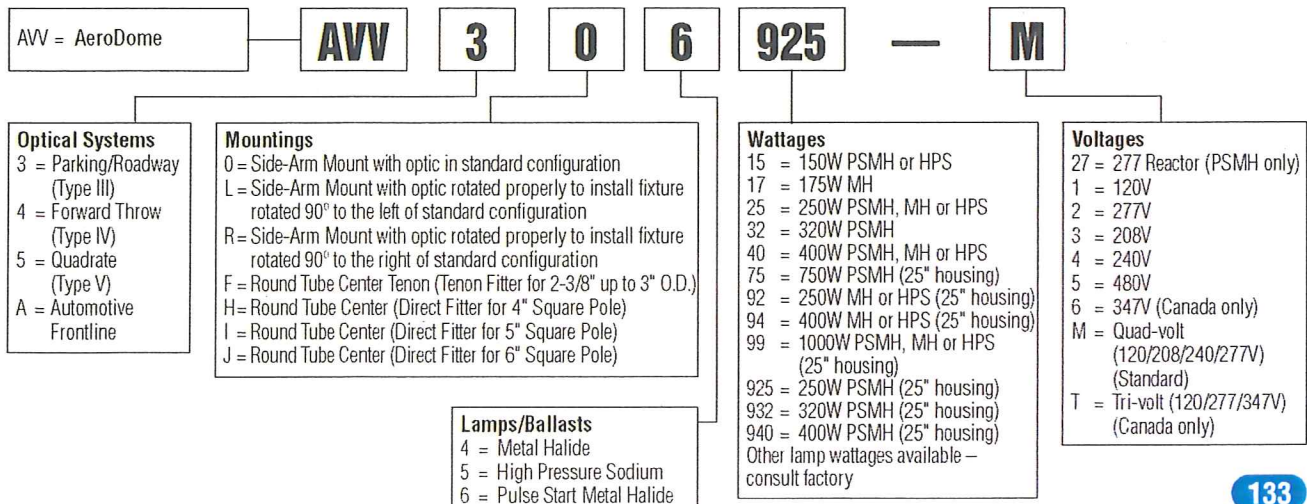
Round Tube Center Tenon
Mounting Code "F", "H", "I" & "J"

F = Round Tube Center Tenon
H = Round Tube Center 4" Square Pole
I = Round Tube Center 5" Square Pole
J = Round Tube Center 6" Square Pole

AeroDome Series Catalog Number Logic

NOTE: See product pages for availability

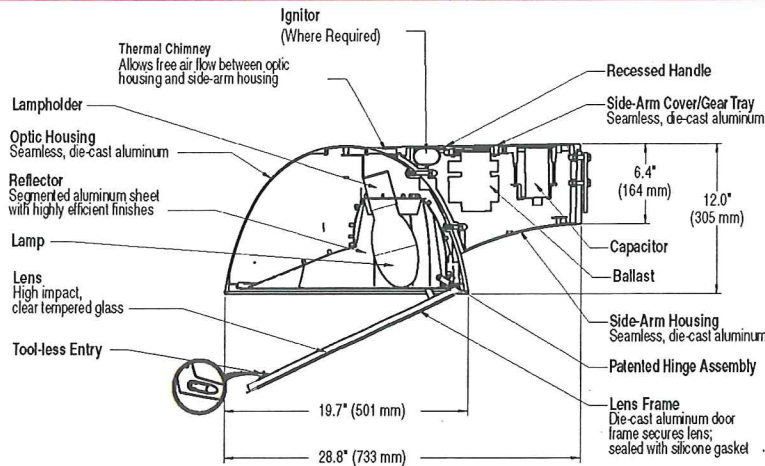
Example shows an AeroDome with Parking/Roadway (Type III) optic, Side-Arm Mount, 250W PSMH lamp and Quad-volt ballast.



SIDE-ARM MOUNT

AERODOME™ PARKING/ROADWAY (TYPE III)

**AVV30-20
SERIES**



SPEC # WATTAGE CATALOG #

PULSE START METAL HALIDE

<input type="checkbox"/>	SPEC #	150W PSMH	AVV3(c)615-(a)(b)
<input type="checkbox"/>	SPEC #	250W PSMH	AVV3(c)625-(a)(b)
<input type="checkbox"/>	SPEC #	320W PSMH	AVV3(c)632-(a)(b)
<input type="checkbox"/>	SPEC #	350W PSMH	AVV3(c)635-(a)(b)
<input type="checkbox"/>	SPEC #	400W PSMH	AVV3(c)640-(a)(b)

METAL HALIDE

<input type="checkbox"/>	SPEC #	175W MH	AVV3(c)417-(a)(b)
<input type="checkbox"/>	SPEC #	250W MH	AVV3(c)425-(a)(b)
<input type="checkbox"/>	SPEC #	400W MH	AVV3(c)440-(a)(b)

HIGH PRESSURE SODIUM

<input type="checkbox"/>	SPEC #	150W HPS	AVV3(c)515-(a)(b)
<input type="checkbox"/>	SPEC #	250W HPS	AVV3(c)525-(a)(b)
<input type="checkbox"/>	SPEC #	400W HPS	AVV3(c)540-(a)(b)

Specify (a) Voltage, (b) Options & (c) Mounting/Rotatable Optics.
 Ⓢ Reduced envelope lamp; ED28 for 320 – 400W PSMH & 400W MH.

(a) VOLTAGE SUFFIX KEY

D	120/277V
M	120/208/240/277V (Standard)
T	120/277/347V (Canada Only)
1	120V
2	277V
27	277V Reactor (PSMH Only)
3	208V
4	240V
5	480V
6	347V (Canada Only)

For voltage availability outside the US and Canada, see Bulletin TD-9 or contact your Ruud Lighting authorized International Distributor.

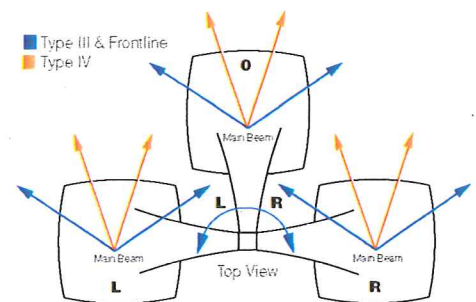
(b) OPTIONS (factory-installed)

-(a)F	Fusing
-(a)P	Button Photocell
-5P	External Photocell (for 480V)

Specify (a) Single Voltage — See Voltage Suffix Key

(c) MOUNTING/ROTATABLE OPTICS

O	Standard Configuration
L	Rotated Left of Standard Configuration
R	Rotated Right of Standard Configuration



Notes

GENERAL DESCRIPTION

Parking lot and roadway full cutoff luminaire for HID lamp, totally enclosed. Housing is seamless, die-cast aluminum. Electrical components are heat-sinked and contained in mounting arm assembly (direct mount configuration). Lens assembly consists of tool-less quick release frame constructed of rigid aluminum and high-impact, clear-tempered glass. High-temperature silicone gasket seals lens from water and insects.

FINISH

Exclusive DeltaGuard® finish features an E-coat epoxy primer with medium bronze ultra-durable powder topcoat, providing excellent resistance to corrosion, ultraviolet degradation and abrasion. The finish is covered by our seven-year limited warranty.

ELECTRICAL

Fixture includes clear, mogul-base lamp. 320 – 400W PSMH and 400W MH utilize the ED28 reduced envelope lamp. Pulse-rated porcelain enclosed, 4kv rated screw-shell-type lampholder with spring-loaded center contact. Lamp ignitor included where required. All ballast assemblies are high-power factor and use the following circuit type:

Reactor (277V PSMH)
150 – 400W PSMH

CWA — Constant Wattage Autotransformer
150 – 400W PSMH; 175 – 400W MH;
150 – 400W HPS

LABELS

ANSI lamp wattage label supplied, visible during relamping. UL Listed in US and Canada for wet locations.

PATENTS

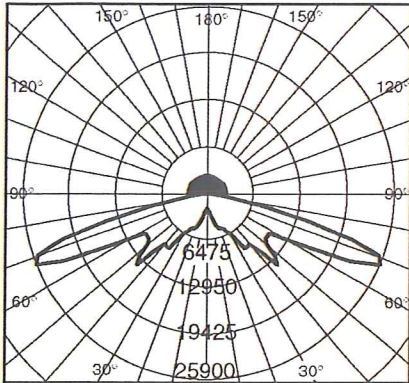
US 4,689,729; D531,882; Canada 108888; Other Patents Pending

ACCESSORIES: (field-installed)

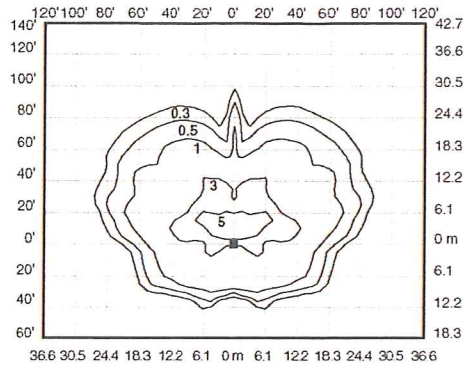
AVRP-3	Round Pole Adaptor (fits 3" – 6" dia. pole)
SBL-AVV20C	External Full-Cutoff Shield
SBL-AVV20E	External Backlight Shield



Isofootcandle plots show initial footcandles at grade. (Footcandles ÷ 0.0929 = Lux)



Lighting Sciences Inc.
 Certified Test Report No. LSI 23054
 Candlepower distribution curve of 400W PSMH
 AeroDome Light.



Isofootcandle plot of 400W PSMH AeroDome
 Light at 25' (7.6 m) mounting height.
 (Plan view)