

Architectural And Historic Survey



Identification

STREET ADDRESS: 201 Fourteenth Street, N.W.
MAP & PARCEL: 9-73
CENSUS TRACT AND BLOCK: 2-312
PRESENT ZONING: B-1
ORIGINAL OWNER: L. A. King
ORIGINAL USE: Residence
PRESENT USE: Rental Property (Residence)
PRESENT OWNER: Russell C. Williams
ADDRESS: P. O. Box 3743
Charlottesville, VA

HISTORIC NAME: King-Runkle House
DATE / PERIOD: 1891
STYLE: Victorian
HEIGHT (to cornice) OR STORIES: 2 storeys
DIMENSIONS AND LAND AREA: 50' x 102' (5100 sq. ft.)
CONDITION: Good
SURVEYOR: Bibb
DATE OF SURVEY: Spring 1978
SOURCES: City/County Records
Russell C. Williams

ARCHITECTURAL DESCRIPTION

This is a picturesque two-storey Victorian house with Queen Anne massing and simple Eastlake detail. The walls are covered with weatherboarding, broken by horizontal bands of vertical siding above the water table, below the wooden-shingled pent-roof between the storeys, and below the cornice. The weatherboarding is now painted a cream color with chocolate-brown trim. The steeply pitched gable roof is covered with standing-seam metal and has a wooden-shingled gable with attic windows over the projecting bay on each side of the house. There are two interior chimneys with corbelled caps. The rear additions are faithful to the original section in most details. Windows are single-light, double-sash, with plain trim. There is a simple one-storey semi-octagonal bay window, with nearly flat roof and simple cornice brackets, on the Wertland Street side. Ornamentation is confined to the porches and the projecting pavillion on the 14th Street facade. There is a shallow one-storey rectangular bay window, with a window bordered by small tinted glass lights and flanked by narrower windows. The lower sash of the single matching window above has been replaced with a plain one. The Eastlake gable ornamentation includes a pendant and curved brackets and a decorated panel below the attic windows. The small entrance porch and vestibule, tucked into the southwest corner of the house, are covered by a very steep shed roof with gouged ornamentation applied to its half-gable end. The Eastlake detail is continued in the balustrade, posts with sawn brackets, and spool frieze with pendants. A small second-storey balcony is set into the porch roof. It has a steep gable roof with simpler ornamentation, supported on large sawn brackets. The balustrade matches that of the porch below. The entrance door, beneath a rectangular transom, has a large light bordered by small tinted glass lights above six small panels. The vestibule is lighted by three small, eight-light, fixed-sash, tinted glass windows. The floor plan is irregular, with a central hall on the second level, but none on the first level. A double-flight, open-well staircase with stick style balustrade rises from a side stair hall, with separate flights rising from the landing to the original part and to the rear addition. Windows and doors have moulded trim with corner blocks. The three fireplaces with coal grates have been closed.

HISTORICAL DESCRIPTION

In 1891, L. A. King purchased Lot #16 of McKennie's Addition from J. C. McKennie who had bought it from his father's estate, but had not received a deed (City DB 2-318). The 1892 tax appraisal shows a new building on the property. This was probably erected by King in 1891, although tradition says that the house was built in 1875. King had a greenhouse and florist shop in the next block, at the location later occupied for half a century by Page Florist. In 1921 King's heirs sold the house to A. M. E. Runkle, who operated a rooming house there (DB 38-476). He apparently added a second storey to the original rear wing, added a side entrance, and possibly re-arranged the staircase. He sold it in 1958 to Goldie M. Allen, Sue Allen Ball, and Frances S. Halliday, three sisters who had apparently managed the rooming house during Runkle's ownership and continued to operate it under the name of "The Runkle House" (DB 208-285). Joe H. McMurry purchased the house in 1969 after the last of the sisters had died, and sold it in 1974 to Russell C. Williams who has restored it and rents it to students (DB 309-209, 355,499).

Additional References: City WB 10-313, 12-149, 13-81.



IDENTIFICATION

Street Address: 201 Fourteenth Street, N.W.
 Map and Parcel: 9-73
 Census Tract & Block: 2-312
 Present Owner: Russell C. Williams
 Address: P.O. Box 3743
 Present Use: Rental Property (Residence)
 Original Owner: L.A. King
 Original Use: Residence

BASE DATA

Historic Name: King-Runkle House
 Date/Period: 1891
 Style: Victorian
 Height to Cornice:
 Height in Stories: 2
 Present Zoning: B-1
 Land Area (sq.ft.): 50' x 102'
 Assessed Value (land + imp.):

ARCHITECTURAL DESCRIPTION

This is a picturesque Victorian house with Queen Anne massing and simple Eastlake detail. The walls are covered with weatherboarding, broken by horizontal bands of vertical planking above the water table, below the wooden-shingled pent-roof between the stories, and below the cornice. The weatherboarding is now painted a cream color with chocolate-brown trim. The steeply-pitched gable roof is covered with standing-seam tin and has a wooden-shingled gable with attic windows over the projecting bays on each side of the house. There are two interior chimneys with corbelled caps. The rear additions are faithful to the original section in most details. Windows are single-light, double-sash, with plain trim. There is a simple one-storey semi-octagonal bay window, with nearly-flat roof and simple cornice brackets, on the Wertland Street side. Ornamentation is confined to the porches and the projecting pavillion on the 14th Street facade. There is a shallow one-storey rectangular bay window, with a window bordered by small panes of stained glass and flanked by narrower windows. The lower sash of the single matching window above has been replaced with a plain one. The Eastlake gable ornamentation includes a pendant and curved brackets and a decorated panel below the attic windows. The small entrance porch and vestibule, tucked into the southeast corner of the house, are covered by a very steep shed roof with gouged ornamentation applied to its half-gable end. The Eastlake detail is continued in the balustrade, posts with sawn brackets, and spool frieze with pendants. A small second-storey balcony is set into the porch roof. It has a

HISTORICAL DESCRIPTION

steep gable roof with simpler ornamentation, supported on large sawn brackets. The balustrade matches that of the porch below. The entrance door, beneath a rectangular transom, has a large pane of glass bordered by small panes of stained glass above six small panels. The vestibule is lighted by three small, eight-light, fixed-sash, stained-glass windows. The floor plan is irregular, with a central hall on the second level, but none on the first level. A double-flight, open-well staircase with stick style balustrade rises from a side stair hall, with separate flights rising from the landing to the original part and to the rear addition. Windows and doors have moulded trim with corner blocks. The three fireplaces with coal grates have been closed.

In 1891, L.A. King purchased Lot #16 of McKennies' Addition from J.C. McKennie who had bought it from his father's estate, but had not received a deed (City DB 2-318). The 1892 tax appraisal shows a new building on the property. This was probably erected by King in 1891, although tradition is that the house was built in 1875. In 1921 King's

GRAPHICS

heirs sold the house to A.M.E. Runkle, who operated a rooming house there (DB 38-476). He apparently added a second storey to the original rear wing, added a side entrance, and possibly re-arranged the staircase. He sold it in 1958 to Goldie M. Allen, Sue Allen Ball, and Frances S. Halliday, three sisters who had apparently managed the rooming house during Runkle's ownership and continued to operate it under the name of "The Runkle House" (DB 208-285). Joe H. McMurry purchased the house in 1969 after the last of the sisters had died, and sold it in 1974 to the present owner, who has restored it and rents it to students (DB 309-209, 355-499).
 Additional Deed References: City WB 10-313, 12-149, 13-81.

CONDITIONS

Good

SOURCES

City/County Records
 Russell C. Williams



VIRGINIA
HISTORIC LANDMARKS COMMISSION

File no. 104-71
Negative no(s) 5078-1&2

SURVEY FORM

Historic name King-Runkle House County/Town/City Charlottesville Street address or route number 201 14th St. NW	Common name
USGS Quad Charlottesville East Original owner L.A. King Original use residence Present owner Russell C. Williams Present owner address P.O. Box 3743	Date or period 1891 Architect/builder/craftsmen Source of name Source of date Charlottesville Landmark Survey Stories vol.2 Foundation and wall const'n Roof type
Present use residential-rental Acreage	

State condition of structure and environs **good**

State potential threats to structure
 Note any archaeological interest **further rehabilitation or continued neglect by absentee landlord**

Should be investigated for possible register potential? yes no **individually? no**

Architectural description (Note significant features of plan, structural system and interior and exterior decoration, taking care to point out aspects not visible or clear from photographs. Explain nature and period of all alterations and additions. List any outbuildings and their approximate ages, cemeteries, etc.)

201: wood, clapboard, flush vertical siding, and shingles; 2½ stories; intersecting gable roofs, standing-seam metal; 3 bays; 1 story, 1 bay porch; Queen Anne; 1891; Decorative turned work on porch and in gable peaks; shingle pent roof between 1st and 2nd stories; staggered butt shingles in gable ends; gable over 2nd story balcony in south bay supported on large sawn brackets; 1st floor central bay projects and is topped with a pediment; side bays are recessed; entrance in southern bay; all windows 1/1 double hung sash.

Interior inspected? **no, said to be extensively remodeled**

Historical significance (Chain of title; individuals, families, events, etc., associated with the property.)

Built for L.A. King in 1891. Served as King residence until 1921. From 1921 to 1969 it was a rooming house called the "Runkle House" after A.M.E. Runkle, the owner from 1921 to 1958.

Charlottesville Landmark Survey, vol.2

Sources and bibliography

Published sources (Books, articles, etc., with bibliographic data.)

Primary sources (Manuscript documentary or graphic materials; give location.)

Names and addresses of persons interviewed

Plan (Indicate locations of rooms, doorways, windows, alterations, etc.)



Site plan (Locate and identify outbuildings, dependencies and significant topographical features.)



Name, address and title of recorder

Jack Abgott, Charlottesville

Date

March 1980

KING-RUNKLE HOUSE



STREET ADDRESS: 201 Fourteenth Street, N.W.
MAP & PARCEL: 9-73
VDHR FILE NUMBER: 104-223
CITY FILE NUMBER: 220
PRESENT ZONING: B-2
ORIGINAL OWNER: L. A. King
ORIGINAL USE: Residence
PRESENT USE: Rental Property (Residence)
PRESENT OWNER: Leslie C. Reed
ADDRESS: P.O. Box 144
Ivy, VA 22945

HISTORIC NAME: King-Runkle House
DATE/PERIOD: 1891
STYLE: Victorian
HEIGHT IN STORIES: 2 storeys
DIMENSIONS AND LAND AREA: 50' x 102' (5,100 sq. ft.)
CONDITION: Good
SURVEYOR: Bibb
DATE OF SURVEY: Spring 1978
SOURCES: City/County Records
Russell C. Williams

KING-RUNKLE HOUSE

ARCHITECTURAL DESCRIPTION

This is a picturesque two-storey Victorian house with Queen Anne massing and simple Eastlake detail. The walls are covered with weatherboarding, broken by horizontal bands of vertical planking above the water table, below the wooden-shingled, pent-roof between the storeys, and below the cornice. The weatherboarding is now painted a cream color with chocolate-brown trim. The steeply-pitched gable roof is covered with standing-seam metal and has a wooden-shingled gable with attic windows over the projecting bay on each side of the house. There are two interior chimneys with corbelled caps. The rear additions are faithful to the original section in most details. Windows are double-sash, single-light, with plain trim. There is a simple one-storey semi-octagonal bay window, with nearly flat roof and simple cornice brackets, on the Wertland Street side. Ornamentation is confined to the porches and the projecting pavilion on the 14th Street facade. There is a shallow one-storey rectangular bay window, with a window bordered by small stained-glass lights and flanked by narrower windows. The lower sash of the single matching window above has been replaced with a plain one. The Eastlake gable ornamentation includes a pendant and curved brackets and a decorated panel below the attic windows. The small entrance porch and vestibule, tucked into the southeast corner of the house, are covered by a very steep shed roof with gouged ornamentation applied to its half-gabled end. The Eastlake detail is continued in the balustrade, posts with sawn brackets, and spool frieze with pendants. A small second-storey balcony is set into the porch roof. It has a steep gable roof with simpler ornamentation, supported on large sawn brackets. The balustrade matches that of the porch below. The entrance door, beneath a rectangular transom, has a large light bordered by small stained-glass lights above six small panels. The vestibule is lighted by three small, eight-light, fixed-sash, stained-glass windows. The floor plan is irregular, with a central hall on the second level, but none on the first level. A double-flight, open-well staircase with Stick style balustrade rises from a side stair hall, with separate flights rising from the landing to the original part and to the rear addition. Windows and doors have moulded trim with corner blocks. The three fireplaces with coal grates have been closed.

HISTORICAL DESCRIPTION

In 1891, L.A. King purchased Lot #16 of McKennie's Addition from J.C. McKennie who had bought it from his father's estate, but had not received a deed (City DB 2-318). The 1892 tax appraisal shows a new building on the property. This was probably erected by King in 1891, although tradition says that the house was built in 1875. In 1921, King's heirs sold the house to A.M.E. Runkle, who operated a rooming house there (DB 38-476). He apparently added a second storey to the original rear wing, added a side entrance, and possibly re-arranged the staircase. He sold it in 1958 to Goldie M. Allen, Sue Allen Ball, and Frances S. Halliday, three sisters who had apparently managed the rooming house during Runkle's ownership and continued to operate it under the name of "The Runkle House" (DB 208-285). Joe H. McMurry purchased the house in 1969 after the last of the sisters died, and sold it in 1974 to Russell C. Williams who had restored it and rented it to students (DB 309-209, 355-499). Between 1974 and 1993, the property changed hands four times (DB 396-174, 383-467, 436-700, 550-157). Additional References: City WB 10-313, 12-149, 13-81

STATEMENT OF SIGNIFICANCE

Built in 1891, the King-Runkle House is one of the most intricately detailed Victorian-period houses left in Charlottesville. Of special note are its Queen Anne massing, contrasting surface materials, and the use of intricate Eastlake detail on the porches and in the gables. These elements have remained essentially intact through many years' use as rental property. It is listed individually on the National Register of Historic Places as a part of the Charlottesville Multiple Resource Area. Its prominent location and its fine Victorian detailing make the King-Runkle House a very important part of the architectural fabric of the City.

The commercial development of the first block of Fourteenth Street has increased the prominence of this house in the neighborhood. The King-Runkle House and the house across from it now mark the gateway to the residential area, emphatically stating the transition from a decidedly late-20th-century part of the Corner to the late-19th-century Preston Heights subdivision.

VDHR Reconnaissance Survey Form

VIRGINIA DEPARTMENT OF HISTORIC RESOURCES
PROPERTY SURVEY FORM
RECONNAISSANCE LEVEL

IDENTIFICATION INFORMATION

VDHR File # 104-0223-000

Property Name: Historic King-Runkle House

NR Property Category: Building
Wuzit: House

Tax Code: Section Parcel
9 73

County/City: Charlottesville (City)

USGS Map: USGS Quad: Charlottesville East

ADDRESS/LOCATION INFORMATION

Address: 201 14th Street

Location:

Vicinity of: Municipality: ZIP: 22903

PROPERTY CLASSIFICATION INFORMATION

Property Boundaries:
Ownership: Private

RESOURCE COUNT -

#	Category	Contributing?	TOTAL:	
1	Building	Contributing	1	
			Contrib:	1
			Non-Contrib:	0

WUZIT COUNT -

#	Wuzit	Contributing?	TOTAL:	
1	House	Contributing	1	
			Contrib:	1
			Non-Contrib:	0

window above has been replaced with a plain one. The Eastlake gable ornamentation includes a pendant and curved brackets and a decorated panel below the attic windows. The small entrance porch and vestibule, tucked in to the southeast corner of the house, are covered by a very steep shed roof with gouged ornamentation applied to its half-gabled end. The Eastlake detail is continued in the balustrade, posts with sawn brackets, and spool frieze with pendants. A small second-storey balcony is set into the porch roof. It has a steep gable roof with simpler ornamentation, supported on large sawn brackets. The balustrade matches that of the porch below. The entrance door, beneath a rectangular transom, has a large light bordered by small stained glass lights above six small panels. The vestibule is lighted by three small, eight-light, fixed-sash, stained-glass windows. The floor plan is irregular, with a central hall on the second level, but none on the first level. A double-flight, open-well staircase with stick style balustrade rises from a side stair hall, with separate flights rising from the landing to the original part and to the rear addition. Windows and doors have moulded trim with corner blocks. The three fireplaces with coal grates have been closed.

Brief Architectural Description of Additions and Alterations
See the Architectural Description and the Historical Description.

Brief Architectural Description of Secondary Resources:

Potentially Contributes to Historic District:

Potentially Associated with NR Multiple Property:

Architectural and Historical Summary:

HISTORICAL DESCRIPTION

In 1891, L. A. King purchased Lot #16 of McKennie's Addition from J. C. McKennie who had bought it from his father's estate, but had not received a deed (City DB 2-318). The 1892 tax appraisal shows a new building on the property. This was probably erected by King in 1891, although tradition says that the house was built in 1875.

In 1921, King's heirs sold the house to A. M. E. Runkle, who operated a rooming house there (DB 38-476). He apparently added a second storey to the original rear wing, added a side entrance, and possibly re-arranged the staircase. He sold it in 1958 to Goldie M. Allen, Sue Allen Ball, and Francis W. Halliday, three sisters who had apparently managed the rooming house during Runkle's ownership and continued to operate it under the name of "The Runkle House" (DB 208-285). Joe H. McMurry purchased the house in 1969 after the last of the sisters died, and sold it in 1974 to Russell C. Williams who had restored it and rented it to students (DB 309-209, 355-499).

Additional References: City WB 10-313, 12-149, 13-81.

1993: The property has changed hands four times since 1974 (DB 396-174, 383-467, 436-700, 550-157).

SIGNIFICANCE & RELATION TO EVALUATION CRITERIA

Built in 1891, the King-Runkle House is one of the most intricately detailed Victorian period houses left in

Charlottesville. Of special note are its Queen Anne massing, contrasting surface materials, and the use of intricate Eastlake detail on the porches and in the gables. These elements have remained essentially intact through many years' use as rental property. It is listed individually on the National Register of Historic Places as a part of the Charlottesville Multiple Resource Area. Its prominent location and its fine Victorian detailing make the King-Runkle House a very important part of the architectural fabric of the City. The commercial development of the first block of Fourteenth Street has increased the prominence of this house in the neighborhood. The King-Runkel House and the house across from it now mark the gateway to the residential area, emphatically stating the transition from a decidedly late-20th century part of the Corner to the late 19th century Preston Heights subdivision.

BIBLIOGRAPHY

=====

Type of Record	Citation
----------------	----------

City Records	Charlottesville City Deed Books and Will Books
--------------	--

County Records	Albemarle County Deed Books
----------------	-----------------------------

Interview	Russell C. Williams
-----------	---------------------

PHOTOGRAPHIC/DRAWINGS DOCUMENTATION

=====

MISSING DATA ELEMENT

Media	VDHR Neg #	Frames	Date
-------	------------	--------	------

B&W 35mm photos	13468	16 - 18	1/ /1994
-----------------	-------	---------	----------

CRM MANAGEMENT EVENTS

=====

MISSING DATA ELEMENT

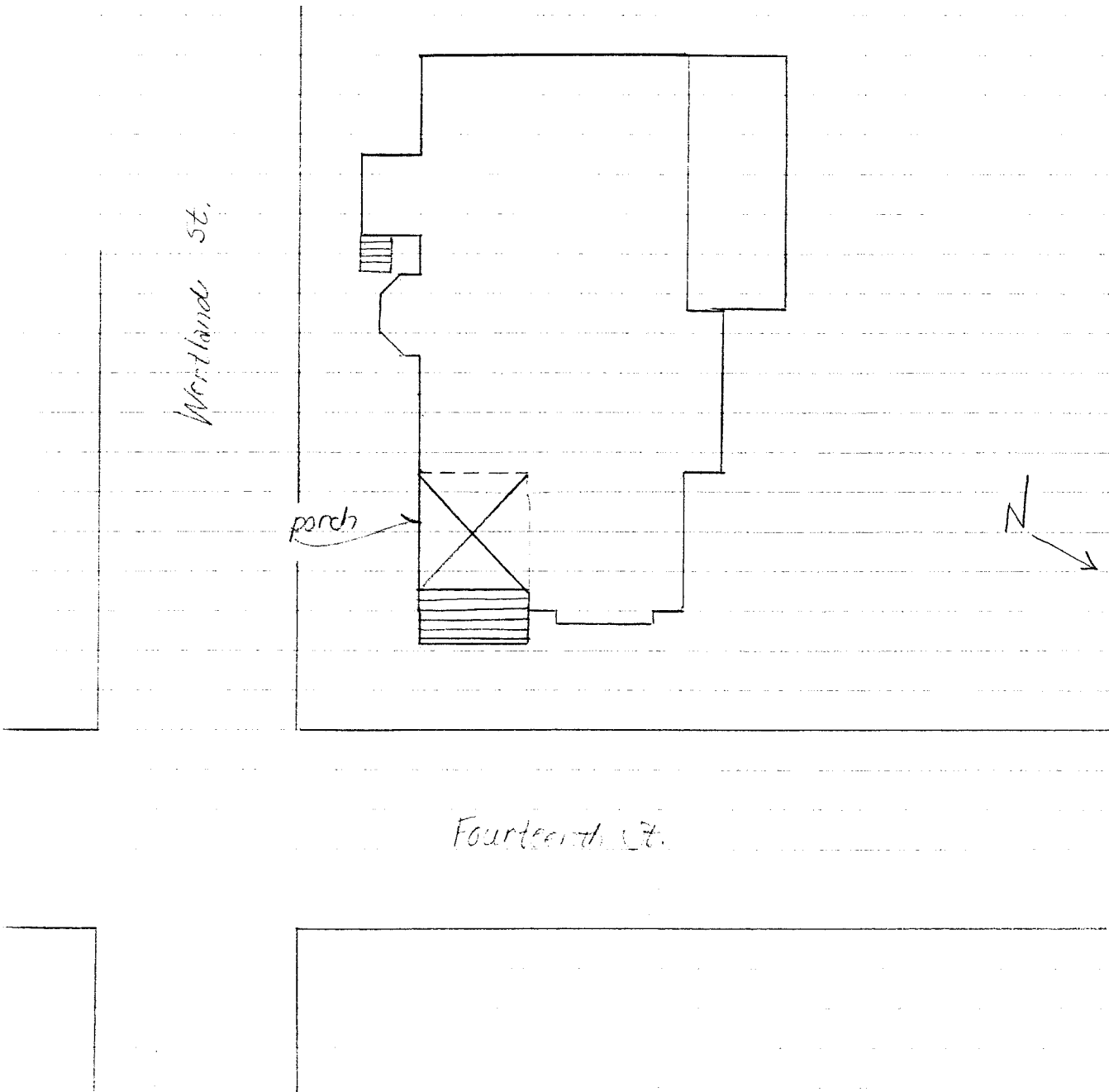
CRM Event	Agency/Organization	Date
-----------	---------------------	------

Survey	Community Development-Bibb/Huppert	/ /1978
--------	------------------------------------	---------

IPS data entry-PAVA (Smead)

KINS - RUNKLE HOUSE
201 FOURTEENTH ST., N.W.

VDER FILE NO. 104-223



ANNE HUBBERT
CITY OF CHARLOTTEVILLE, COMMUNITY DEVELOPMENT
SUEAN R. CMEAD
PRESERVATION SERVICES OF VIRGINIA

JANUARY 1995

201 14th St

355-497	Russell C. Williams	4/15/74	\$56,000	
309-209	Joe H. McMurtry	7/3/67	\$68,000 (3 parcels)	2-312
WB 13-81	Susan Swart & Joe Allen Ball	2/14/69		
WB 12-149	Sue Allen Ball	10/27/67		
WB 10-313	Goldie Allen & " " "	12/30/64		devised of Frances S. Halliday
208-285	" " ^{Frances S} Ball Halliday	10/5/58	\$14,000	plat 2-312
38-476	AME. Runkle			

"The Runkle House - Rooms"

1875

11 rooms, 2 baths

wood; metal gable roof

softwood & plaster

see sketch in file

King	1891-1921	= 30-yr
Runkle	1921-1958	= 38-yr
Allen Ball Halliday	1958-1967	= 11-yr

City Dir

- 1953, '62 The Runkle House, boarding, Goldie M. Allen & Mrs Susie Ball
~~1953~~ " A.M.E. Runkle n.l.
" " Goldie M. Allen - The Runkle House & mgr Anderson Apts
" " Sue A. Ball (wid Harold) - Univ Beauty Salon, The Runkle House, mgr Chancellor Apts
" " Frances S. Halliday (wid Chas) - 200 15th NW
1970 The Runkle House, boarding, Joan M^{rs} Murray

947-3626

Williams

1875 from last owner; arch student disagreed, then verified
Mrs Swart agrees
wants know

(int in Inge's store, has been watching it)
(also int in Rose Cottage)

~~2-318~~
~~7-115~~
~~5-105~~
~~5-105~~

201 14th St

38-476 2-318 (1891) → L A King
8/30/1921 King dec intestate 6/27/1916 leaving wid L. L. King
& 2 dau Olive & Margaret

now Mrs Thos Perrell now Mrs Herbert Weatherbee

L L King dec 12-30-1920

Olive K & Thos Perrell, & Marg K & Herbert Weatherbee

→ A. M. E. Runkle

\$2000

201 14th St - 50' on 14th, 102.1 on Westland

2-318 C.D Fishburne, spec commr of Corp Ct in M^e Kenzie advrs vs
6/11/1891 M^e Kenzie etc, → L A King

Lot #16 in M^e Kenzie Addition

same which was reported sold to J C M^e Kenzie who has
resold to King, & requests it be sold directly to him

\$14,000

208-285 A M E Runkle → Goldie M. Allen, Sue Allen Ball, & Frances J. Holliday
9/30/1958 50' x

~~1892~~
~~1893~~
 1892 4th W L A King (14th?) 4th St +1000 = 1200 M=Kimmie add 1000 Bldg
 1893 " A L " M=Kimmie 16; Waide st to Prater Hght " Ex CD Fishburne Comm
 1891 " King rd (except L L in Fifewelle) J C M=K - 4 unimproved lots
 1893 " M. M=Kimmie est - 21 lots +0 = 1000
 J C " Ambroselli Waide Main +1500 = 2000 from M=K
 1896, 98, 1905 L A King +1200 = 1500
 1911 " " 1000 + 1400 = 2400
 1916, 18, 20 " " " + 1500 = 2500
 1921 " " est " + 2000 = 3000

Summary

1892 L A King 200 + 1000 = 1200
 1896-1905 " " 3000 + 1200 = 1500
 1911 " " 1000 + 1400 = 2400
 1916-20 " " " + 1500 = 2500
 1921 " " est " + 2000 = 3000

This, of tax maps, indicates 1-story near wing orig, 2nd story added 1916-20. Picture shows more now.

City, WB 10-313 Frances S. Halliday Dec¹⁴ 1964 at 5-6
sis - Goldie M. Allen 75
Sue A. Ball 73

WB 13-81 Sue Allen Ball
2 Chn Susan K. Smart + John Allen Killian

~~35 lots in M. M. Kenner's subdivision 1891~~

on the 14th St side.

very missing
This very picturesque 2-story, Vic house is irregularly shaped ^{with Eastlake details} w/ projecting bays on all sides.
Basically it is 3 bays wide + triple-gable

Its steeply-pitched gable roof is covered w/ standing-seam tin + has a wooden-shingled gable w/ an attic window ~~over each~~ ^{over each} above the projecting bay ~~on~~ except the rear one which is weatherboarded. It has a simple boxed cornice.

Orig white w/ dark trim, the weatherboarding is now ^{it} painted buff w/ chocolate brown trim

It is ^{covered w/ weatherboarding} weatherboarded except for the areas below the 1st-story windows, above the ~~windows on the first level~~ 2nd-story windows, which are covered w/ vertical planking

^{broken by} w/ horizontal bands of vertical planking at the top + bottom + between the levels, just below the wooden-shingled pent-roofs above the water table, between the stories, + below the cornice

30 m 27 1/2

A ^{small} tiny 2nd-story ^{balcony} porch is set into the steep shed roof of the entrance porch. It has a steep gable roof, w/ decoration at its peak, supported ^{by} heavy ^{longer} sawn brackets. The balustrade matches that of the porch below.

A ^{very} steep shed roof covers the small entrance porch & the vestibule [at the SE corner of the house] (which appears to have been enclosed later from part of the yard) tucked into the SE corner. The ~~porch~~ Eastlake detail is continued in its balustrade, posts w/ sawn brackets in a sunburst design, & spiral frieze w/ pendants.

The Eastlake ornamentation is concentrated in ^{confined to} the porch & the projecting pavillion on the facade. There is a [very] shallow ^{rectangular} bay window ^{w/ a low pediment} at the 1st level, w/ a window ~~to~~ of each sash bordered by small panes of stained glass & flanked by narrower windows.

~~There is a~~ ^{of the} single matching window at the 2nd level, but its lower sash has been replaced w/ a plain one.

The peak of the gable is decorated by ~~egg~~ gouged scroll-work & pendant, & there are several rows of

^{decorated panel} below the attic windows.

~~The peak of the gable is decorated by~~

* Ent porch... ^{are} covered by... w/ ^{its half-gable end decorated by} a gouged sunburst enclosed ^{by a moulded square mould}

... curved brackets sweeping down

foundations ~~not~~ ~~likely~~
large windows

201 Fourteenth St

of a wooden-shingled pent roof between the 1st & 2nd stories.

The steep gable roof is covered of standing-seam tin & has a boxed cornice.

The windows are ^{single-light} double-sash of plain trim. There is a simple 1-storey semi-octagonal bay window, of nearly flat roof & ~~boxed cornice of simple~~ ^{woodland} & simple cornice brackets, on the ~~14th~~ ^{15th} St side.

^{of Eastlake details}
This very picturesque 2-storey, vic house is irregularly shaped of projecting bays on all sides. Basically it is 3 bays wide & triple-pile

Its steeply-pitched gable roof is covered of standing-seam tin & has a wooden-shingled gable of an attic window ~~over each~~ ^{above} the projecting bay ~~on~~ except the rear one which is weatherboarded. It has a simple boxed cornice.

Orig white w/ dark trim, the weatherboarding is now painted buff w/ chocolate brown trim

It is ^{covered of weatherboarding} weatherboarded except for the areas below the 1st-storey windows, ~~above the~~ ^{between} the ~~windows on the first level~~ 2nd-storey windows, which are covered of vertical planking

^{broken by} horizontal bands of vertical planking at the top & bottom & between the levels, just below the wooden-shingled pent roofs above the water table, between the stories, & below the cornice

~~30 m 21 1/2~~
#5

A ^{small} tiny 2nd-story porch ^{balcony} is set into the steep shed roof of the entrance porch. It has a steep gable roof w/ decoration at its peak, supported by ^{heavy} heavy sawn brackets. The balustrade matches that of the porch below.

~~an entrance~~
A very steep shed roof covers the small entrance porch & the vestibule [at the SE corner of the house] (which appears to have been enclosed later from part of the porch) tucked into the SE corner. The ~~porch~~ Eastlake detail is continued in the balustrade, posts w/ sawn brackets in a sunburst design, & spool frieze w/ pendants.

The Eastlake ornamentation is confined to the porches & the projecting pavillion on the facade. There is a [very] shallow ^{rectangular} bay window ^{w/ a low pediment} at the 1st level, w/ a window ~~to~~ of each sash bordered by small panes of stained glass & flanked by narrower windows.

~~There is a~~ ^{of the} single matching window at the 2nd level) but its lower sash has been replaced w/ a plain one. The peak of the gable is decorated by ~~an~~ gouged scroll-work & pendant, & there are several rows of

^{decorated panel}
below the attic windows.

~~The peak of the gable is handsomely~~
* Ent porch... ^{are} covered by... w/ ^{its half-gable end decorated by} a gouged sunburst enclosed ^{by a moulded} square mould

... curved brackets sweeping down

11/31-12/08

Eastlake!

201 14th St

irreg shape, projecting bays + gables all sides
 2 stories + attic on mod brick found.
 front 2 bays, side — bays
 weatherboarding (buff); vertical flush wood siding below 1st fl wind
 steep tin gable roof, boxed cornice
 wood-shingled pent-roof + in gable
 " " in gable ends, attic windows
 eaves + verges project slightly
 chimneys; 2 int w/ corbelled caps

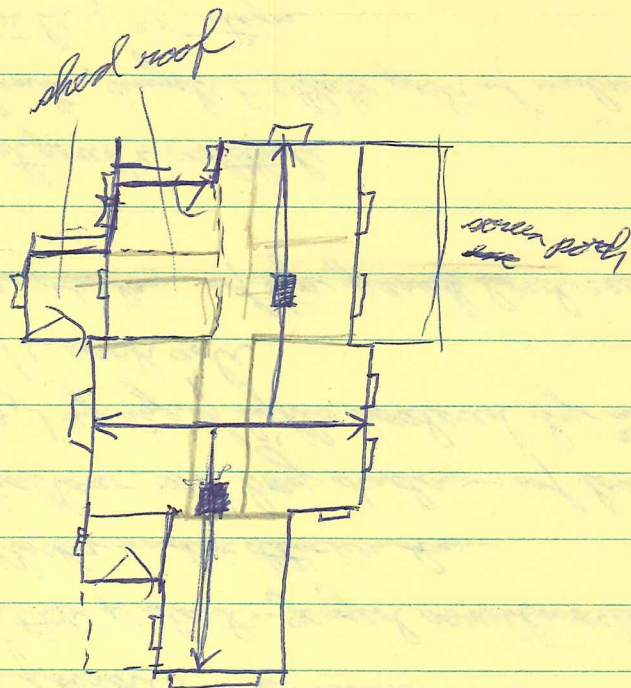
very irreg plan
 windows 1/1 w/ plain trim - chor brown

rear wing matches except gable weatherboarded

sm + pl semi-ovt 1-story bay window w/ ^{irregly flat} low-hgs roof, simple cornice
 brackets, + ^{over} ~~panels~~ 1/1; windows paired above; under with gable
 projecting pavillion on facade; ^{{ gable peak + panel under wind dec in Eastlake}
 peak of gable - Eastlake pendant + gaged scrollwork - nice
 series of corner blocks under attic window
 1st storey - very shallow root bay window w/ low pediment;
 no side windows, 1 reg size of lights bordered by ~~no~~ stained glass,
 2 narrow 1/1 each side
 2nd storey - reg window w/ top panel bordered by stained gl

steep shed roof over ext porch + vestibule
 spiral fringe w/ pendants, simple Eastlake post w/ can balustrade
 Eastlake balustrade, 25 steps
~~no~~ tiny octagon porch set into roof; matching balustrade,
 simpler Eastlake ^{gable} ~~corner~~ dec

Could stairs have been
3 or 4 flight before
other door added for
rooming home?
Maybe back bedroom
was part of stair hall.



inside - ~~monstrously~~ moulded trim of corner blocks, all 3 saw for part,
seems to disprove idea of later vestibule

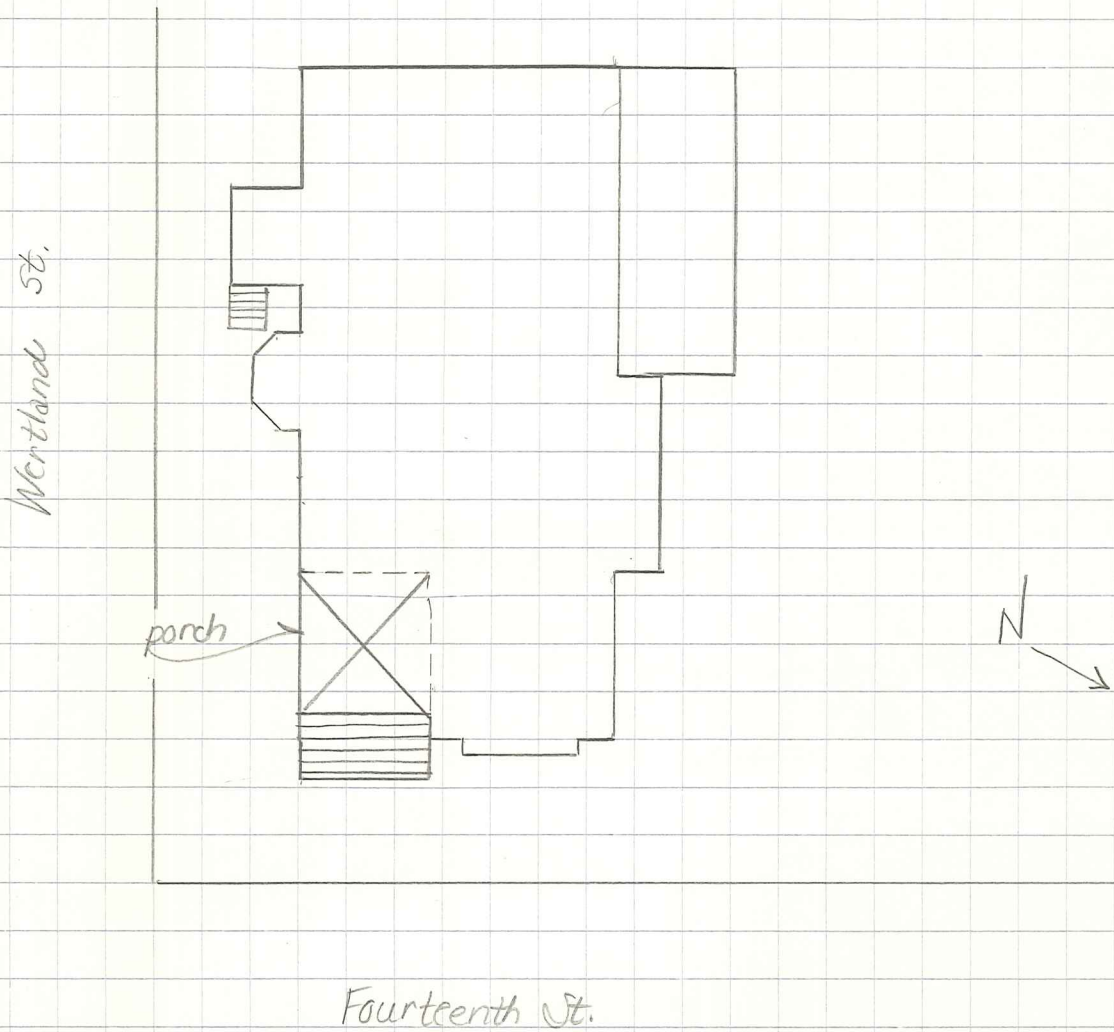
ext door - ~~pane~~ pane of stained glass around, 6 in panels below
gouged sunburst in sq in half-gable end of porch roof

3 in ^{single-arch} stationary 8-light stained glass in vestibule

3 fireplaces w/ coal grates, all bricked up

KING - RUNKLE HOUSE
201 FOURTEENTH ST., N.W.

VDHR FILE NO. 104-223



ANN HUPPERT
CITY OF CHARLOTTESVILLE COMMUNITY DEVELOPMENT
SUSAN F. SMEAD
PRESERVATION ASSOCIATES OF VIRGINIA

JANUARY 1994

City WB 10-313 Frances S. Holliday Dec 14 1964 at 5-6
sis - Goldie M. Allen 75
Sue A. Ball 73

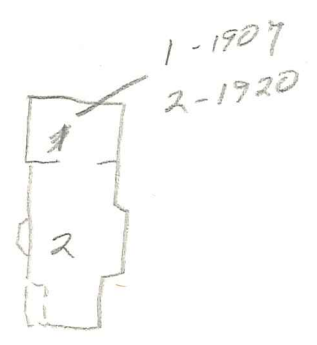
WB 13-81 Sue Allen Ball
2 chn Susan K. Stewart + John Allen Killea



From their porch, the students take in the action on 14th Street. (Sitting front left to right,) Holly Olinger, Chris Wellner, (back, left to right) Katherine Hill, Cass Russillo and Barbara Mantel.

Queen Anne mansions & domes

This ^{very} picturesque Victorian ~~mansions~~ with 2-storey Victorian house with Eastlake details ~~is irregularly shaped with projecting bays on all sides~~. The walls are covered with weatherboarding broken by ~~hand~~ horizontal bands of vertical planking above the ~~wooden~~ water table, below the wooden-shingled pent-roof between the stories, and below the cornice. The weatherboarding is now painted buff with chocolate-brown trim. The steeply-pitched gable roof is covered with standing-seam tin and has a wooden-shingled gable with attic windows over ~~the~~ projecting bays ~~on each side of the house~~. It has a simple boxed cornice. There are two interior chimneys with corbelled caps. The ~~several~~ rear additions are faithful to the original section in most details. Windows are single-light, double-sash, with plain trim. There is a simple one-storey semi-octagonal bay window, with nearly flat roof and simple cornice brackets, on the Wertland Street side. The Eastlake ornamentation is confined to the porches and the projecting pavillion on the 14th Street facade. There is a shallow rectangular bay window with a low pediment at the first level, with a window ~~with each sash~~ bordered by small panes of stained glass and flanked by narrower windows. The ~~lower sash of the~~ single matching window at the second level ~~has been replaced with a plain pane of glass~~. The peak of the gable is decorated with gouged scrollwork and pendant, and there are several rows of
 below the attic windows.



201 14th

A very steep shed roof cover the small entrance porch and vestibule ~~(which looks as if it might have been enclosed later from part of the porch)~~ tucked into the southeast corner of the house. The Eastlake detail is continued in its balustrade, posts with ~~sawn~~ brackets in a sunburst design, and spool frieze with pendants. A small second-storey balcony is set into the ~~steep shed roof over the entrance porch~~. It has a steep gable roof, with simple ~~turned~~ decorations at its peak, supported on large sawn brackets. The balustrade matches that of the porch below. The interior floor plan is irregular
 doors outside

The entrance door has a large pane of glass bordered by small panes of stained glass above six small panels. There is a single-paned rectangular transom. The vestibule is lighted by three high, 8-light, fixed-sash, stained-glass windows. The interior floor plan is irregular, with a central hall on the second level, but none on the main level. A double-flight, open-well staircase rises from a side stair hall, with separate flights rising from the landing to the original part and to the rear addition. Windows and doors have moulded trim with corner blocks. The three fireplaces ~~xxxxxx~~ with coal grates have been closed.

City WB 10-313 Frances S. Halliday Dec 14 1964 at 5-6
sis - Goldie M. Allen 75
Sue A. Ball 73

WB 13-81 Sue Allen Ball
2 Chn Susan K. Swart + John Allen Killian

~~35 lots in M.M. Kenner's subdivision 1891~~

