

33-20 ✓

#636

17-2  
59x206 (13, 154)

500 Second St NE

102 Vermont St

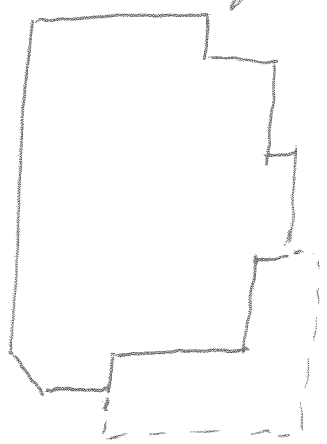
374-38	Shamrock Corp	5/1976	293-256
370-570	Virginia S. Carroll	1/11	"
347-167	Robt W Artinian	1973	"
293-253	Wm H Christman	1967	"
WB 11-444	Dr Eugene E Doll	"	
	Mabelle S. Walker est	1966	
111-327	" " —	1942	

"old", ~~1960~~ 1926?

3-fam, 2-5, 10 rooms, 1/2 base

conc found, brick walls, metal hip roof

- 1972 - convert boarding house to 3 apt
- 5/1976 - repair fire damage



Sanborn maps  
1929 Brick viewed



City Dir  
1938 Mrs. George S. Tyler  
1945 Alex P. Walker

1965, 67 1 unit, rented

~~1924 Robt & Walker~~  
~~1956 W. J. O. & Mabelle V. Dakney~~

500 Second St

City DB

111-327

Marg. T. + Eugene L. Barnwell → Mabelle S. Walker

5/20/1942

1/3 int in parcel at NE corner Hedge + 2nd

from fa R. C. Walker 1925 (DB 53-32)

to R C Walker from Emily Hanson <sup>(sic)</sup> Michie 1911 by 2 deeds:

22-447 + 34-186

53-32

R. C. Walker → Etta Tyler Walker, Eleanor Stewart

9/1/1925

Walker, Marg. Walker, + Robt Char Walker Jr gift

lot w/ bldgs NE cor 2nd + Hedge

to Etta for life, then 1/3 to each of the 3 chn (now 10, 7, + 4)

~~34-186~~

22-447

Mrs Emily Hanson Michie + her husband Thos Johnson

9/30/1911

Michie → Robt Char Walker \$950

lot at NE corner 2nd + Hedge, 59' x 106'

2 1/2 2-bay?, triple pile?  
stretchers band

found (6-8 am) low at rear, high at front,  
water table }

semi-est proj bay N end facade of low  
red gable <sup>of thin post work</sup> & simple brackets above;  
cent window wider (<sup>12/12</sup> ~~12/12~~) <sup>prob was pair narrow</sup> as in Robinson house

9/9 1/2 tall & narrow  
wind now 6/6 (were 1/1 or 2/2) w/ moulded trim,  
sq arches 1st, flat arches 2nd; wooden sills  
shorter at 2nd level

sq sts basement

1-5 verandah wraps around SW front corner  
bet proj bays;

hip roof  
proj deeply proj eaves, <sup>equal cor</sup> w/ ~~wide~~ w/ modillions,  
pl fringe, 6 Tuscan columns, simple bal,  
wooden floor & steps

sq-arched ent: 12/panel, 12 sidelight/panel,  
3-2 rest between cor all

cent  
proj bay on S w/ a gable & wind  
deck onto porch 12/2 panels

med- <sup>pedimented</sup> ~~gable~~ <sup>hip roof</sup>, deeply proj eaves, banded cor,  
pl fringe; gable end to street, w/ shingles,  
gable weatherboarded, w/ louvers



500 NE 2<sup>nd</sup> Street