

Architectural And Historic Survey



Identification

STREET ADDRESS: Route 250 By-Pass (Formerly Rugby Avenue)	HISTORIC NAME: McIntire High School
MAP & PARCEL: 45-7	DATE / PERIOD: 1936-37, 1959
CENSUS TRACT AND BLOCK:	STYLE: Colonial Revival
PRESENT ZONING: R-1	HEIGHT (to cornice) OR STORIES: 2 storeys
ORIGINAL OWNER: Albemarle County School Board	DIMENSIONS AND LAND AREA:
ORIGINAL USE: School	CONDITION: Good
PRESENT USE: School and Offices	SURVEYOR: Bibb
PRESENT OWNER: Albemarle County School Board	DATE OF SURVEY: Winter 1983
ADDRESS: County Office Building Charlottesville, Virginia 22901	SOURCES: City Records Thomas W. Hurlburt
	Floyd E. Johnson

ARCHITECTURAL DESCRIPTION

McIntire School is two storeys tall and seven bays wide, with the five center bays projecting slightly on the facade, and a 2-storey pedimented portico covering the center bay. A 2-storey gymnasium wing covers the rear half of the east end of the building and extends some distance behind it. The building is set on a low foundation. Walls and foundation are constructed of brick laid in 3-course American-with-Flemish bond, which is quite uncommon. There is a moulded brick water table on the front and sides of the building, and a flush band of vertical stretchers on the rear elevation. There are quoins of rusticated brick at the corners. A concrete-capped parapet conceals a flat roof covered with tar-&-gravel. A concrete entablature set below the top of the parapet extends across the front and sides of the main block and the end bays of its rear elevation. A flush band of vertical stretchers, matching the water table, defines the parapet on the rear elevation. Windows in the main block are double-sash, 8-over-8 light. Most are arranged in bands of four, but there are pairs in the bays flanking the portico and above the entrance, and single windows on either side of the entrance door. Each group has a single concrete sill and an arch with stone keystone, a jack arch on the facade and a flat arch on the rear elevation. A two-storey pedimented portico covers the center bay of the facade. Four fluted Roman Doric columns support an entablature deeper than that on the parapet with dentil moulding and the name "McIntire High School" incised on the frieze. There is a relief decoration on the pediment. A flight of six concrete steps rises from all three sides to the concrete portico floor. The paired 6-paneled entrance doors have a tall one-light rectangular transom. Pilasters carry an entablature with dentiled frieze and a broken pediment with an urn. The single windows on each side of the entrance are circular headed, double-sash, with Gothic tracery. They have concrete architrave and spandrels. Side elevations are blank. The rear elevation is eight bays wide with the entablature continuing over a two-storey round-arched entry recess in each end bay. There is a pair of doors with nine lights over a panel at the first level, and a large circular-headed window at the second level. Between them is a concrete spandrel with "GIRLS" incised on the western one and "BOYS" on the eastern one. There are bands of three high 9-light hinged-sash windows in the next-to-end bays. The other four bays have bands of four 8-over-8 light windows with flat arches, matching those on the facade. There is a large exterior chimney near the western end of the rear elevation. A one-storey auditorium and classroom wing behind the main block is attached to it by a glass-walled hyphen at the girl's entrance.

The 2-storey gymnasium wing is also built of brick laid in 3-course American-with-Flemish bond and has a moulded brick water table on three elevations. The parapet is slightly lower than in the main block and lacks the entablature; instead, it is defined by a band of vertical stretchers. The facade of this wing is five bays wide. Fluted pilasters support an entablature with dentil moulding over the three center bays. The parapet is higher over these three bays and is buttressed by concrete consoles. In each bay there is a pair of doors matching those in the main block. The windows in each bay are bordered by bands of stretchers and have brick spandrels. Windows on the facade are paired 12-light metal hinged-sash. The east side elevation is ten bays long. The end bays have a single 12-light window at the first level with a jack arch instead of a band of stretchers. The next-to-end bays have a single door with half-round fanlight, set within a round-arched recess. The center six bays have 20-light windows at the second level and 15-light at the first, with spandrels and bands of stretchers like those on the facade. The south and west elevations are completely blank except for a single door on the west elevation.

HISTORICAL DESCRIPTION

The Albemarle County School Board purchased 32 lots in the center of the new Colonial Heights subdivision within the City of Charlottesville in 1935 (City DB 88-38). McIntire High School was built soon afterwards and opened in the fall of 1937. The architect is believed to have been Raymond Long. The building housed eleven grades, from first grade through high school. After the consolidated Albemarle High School opened in 1953, McIntire became an elementary school, housing the first through the seventh grades. An auditorium and classroom wing was added in 1959. The building has not been used as an elementary school since the 1973-74 session. It presently houses the Alternative Education Program and several community agencies.

45-7 ✓

R-1
32 lots

#475

M^e Intire School

115-411

alb to Sch Bd

88-38

"

1936

City of Chi'o

2-3, base.

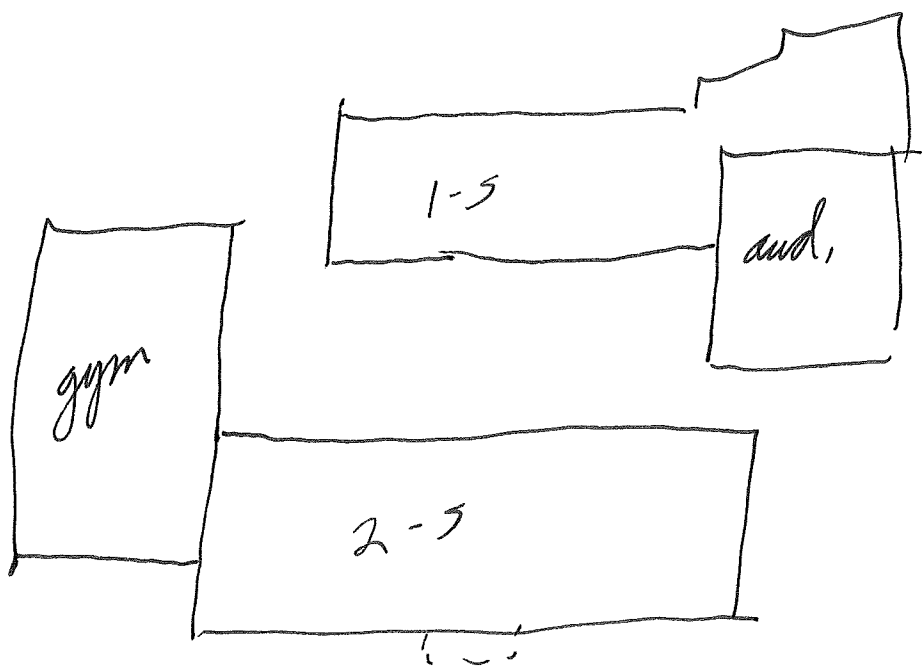
masonry walls, slate gable roof
1979 - int. alterations

1959 - addn

1976 - repair fire damage - \$27,000

1977 - 2 classrooms → offices

1973 Sipping; still school
built when? —



Bicen. Prog

9 HSs built 1919-1937, 11-yr program

AHS - 1953, all other HSs except Scottsville reverted to elementary

1959 - additions to MS entire

Mr Harlburt

opened - fall 1937

closed - 1973-74



M^{rs} Intore Sch

88-38 E D Jr + Louise R Humbley → Co Sch Bd of Albia #12,500
12/14/1935 books 1 & 2 on plat of Col Hgts subdiv (88-4044) 1935-
(
part of 86-356, 1935, fr Robt L M^{rs} Elroy et al

all concrete

2-5, 5 or 7-bay cent block w/ 2-5, 1-bay side wings set back
sl — no, rear not stepped back,
so is all bay w/ ent 5' ~~or~~ ^{prty}
flat roof, conc-capped parapet; ^{sandstone} ~~conc~~ entab below parapet

walls & high found 3-c Am-w/ F-lem
moulded brick water table
rusticated brick corner quoins; ind near

5/8 wind w/ oak trim, 4 in outside bays & wings,
2 in inner side bays & over ent, single side bays
under portico; single conc sill & jack arch w/ stone keystone

2-5 ped. portico center 1-7 bay facade
4 fluted Roman Doric columns, stone
entab w/ dentils & incised name MHS on frieze
relief dec on ped.

~~for~~ stone floor & steps
frontispiece ent;

stone pilasters carry entab w/ dentiled ^{cornice?} frieze &
broken ped w/ win

pr 6-panel door, tall 1-l transom
side windows 1st level;

~~round arch~~ circ-headed w/ treasury, stone architrave
to floor, stone spandrell

W end bare except entab & water table

rear elevation

~~8~~ 8 bays

found low here, & water table in flush band vertical stretchers

1st & 8th bays;

2-5 round-arched entry recess w/ keystone

ent conc entab above ^{ent for facade} parapet steps up

large & nice circ-headed window 2nd

pc door (9l/panel) 1st

conc of spandrel w/ incised "BOYS" on E & "GIRLS" on W

no parapet entab, band stretchers & gym & water table

2nd & 7th

6th bay; band 3 high 7-8 w/ flat arch

others: 4 5/8 w/ flat arch


large ^{ent} ~~ent~~ chim bet 1st & 2nd + 3rd

1-5 classroom wing attached by ~~to~~ hyphen (glass)
at girls' ent.


gym

at E end, faces N, set back, lower found here, the same level

2-5 (a little shorter), 5-bay

same brickwork, no entab on parapet, but set-off by band vert stretchers cont fr band which frames windows in each bay, also ^{inset} spandrels of  brick

4 fluted pilasters every entab over 3 center bays - dentils, incised bymm on frieze parapet stepped up above w/ conc courses 3 ~~no~~ pr same door

windows pr 12-l metal sash 

E side elevation 10 bays:

- # 1-10 1 1st level window as facade, but w/ jack arch, no band ^{keystone}
- # 2-9 ~~round~~ ^{single} a door w/ wheel-transom in ~~round~~ round-arched recess
- # 3-8 windows both levels, 20-l ^{2nd} ~~above~~, 15-l ^{w/ bands} 1st, as on facade

S elevation completely bare, same water table

W " " " except single door as E, but flush, water table - ~~to~~ flush band vertical stretchers

