

# Architectural And Historic Survey



#415

## Identification

|  |   |
|--|---|
| <b>STREET ADDRESS:</b> 800 E. High Street  | <b>HISTORIC NAME:</b> Randolph-Henshaw House  |
| <b>MAP &amp; PARCEL:</b> 53-184  | <b>DATE / PERIOD:</b> 1900  |
| <b>CENSUS TRACT AND BLOCK:</b>   | <b>STYLE:</b> Colonial Revival  |
| <b>PRESENT ZONING:</b> B-1   | <b>HEIGHT (to cornice) OR STORIES:</b> 2½ storeys   |
| <b>ORIGINAL OWNER:</b> Mary W. Randolph  | <b>DIMENSIONS AND LAND AREA:</b> 57.1' x 85.3' (4871 sq. ft.)                             |
| <b>ORIGINAL USE:</b> Residence   | <b>CONDITION:</b> Good  |
| <b>PRESENT USE:</b>  | <b>SURVEYOR:</b> Bibb   |
| <b>PRESENT OWNER:</b> Bacchus Land Trust   | <b>DATE OF SURVEY:</b> Summer 1983  |
| <b>ADDRESS:</b> c/o John A. Schwab, Jr.<br>P. O. Box 1524<br>Charlottesville, Virginia 22902 | <b>SOURCES:</b> City Records<br>Sanborn Map Co. - 1896, 1907<br>Ch'ville City Directories |

## ARCHITECTURAL DESCRIPTION

This large, high-ceilinged house was reportedly once used as a private hospital. It is 2½ storeys tall, three bays wide, and double pile and is set on a high foundation of brick laid in 5-course American bond with a stepped water table. Wall construction is of brick laid in 5-course American-with-Flemish bond. The dominant feature of the house is its high-pitched truncated hip roof covered with patterned metal. It has projecting eaves and a boxed cornice with dentil moulding. There are two interior end chimneys on the east side of the house and a smaller capped one at the west side of the rear. Windows are double-sash, 2-over-2 light, with brick sills and plain surrounds. They are segmental arched and about the same height at both levels. They once had shutters. Those at the first level of the facade and at the rear of the western elevation are extremely wide. In the center of the second level of the facade, under a single segmental arch and diamond-paned rectangular transom, there are two small 4-over-4 light windows with paneled spandrels and glass shutters with diamond glazing in the upper half. A group of three dormers is centered on the facade, a large one flanked by smaller ones set slightly lower on the slope of the roof. They have pedimented gable roofs and sides covered with patterned metal. There is one double-sash window in each of the small dormers and three in the larger ones, all with diamond glazing in the top sash. There is a matching small dormer on the east side of the house and a medium-sized one with two windows on the west side. An original 2-storey wing covers most of the western half of the rear elevation. It has a pedimented gable roof and a small capped interior end chimney. A smaller, flat-roofed, 2-storey wing is centered on the rear elevation of the main block. The first storey may be original, but the second is a later addition. A one-storey shed-roofed back porch covering the rest of the rear elevation has been enclosed, as has a small, flat-roofed, 2-storey porch in the southwest rear corner of the house. A one-storey veranda covers the facade and most of the west side and originally extended into a porte cochere on the east side. The porte cochere has been removed, and the side portion of the veranda has been enclosed as a sun parlor. The veranda has a nearly flat metal roof with projecting eaves, an entablature with dentil moulding, Tuscan columns, and a simple balustrade. At the corners, there are paired columns with small sections of Chinese Chippendale balustrade between them. The segmental-arched central entrance door has a single pane over a panel and is flanked by diamond-paned sidelights over panels. The interior follows the central hall plan. There is a 2-flight open-well stair with Victorian balustrade in a stair hall in the center of the west side of the house. A door from the stair hall opens onto the western section of the veranda which has been enclosed. The parlor mantel is very ornate with egg-&-dart moulding, marble surround, fluted columnettes, and columned over-mantel with relief ornamentation.

## HISTORICAL DESCRIPTION

Mary W. Randolph (Mrs. W. M. Randolph) bought this lot in 1899 (City DB 10-194) and built the house the next year, according to tax records. She traded it to Ellie M. Elliott (Mrs. John F. Elliott) in 1904 for "Oak Lane" at 1301 Park Street (DB 15-188). Mrs. Elliott sold it to her son Millard C. Elliott in 1916 (DB 28-266), and he sold it in 1920 to Morris Rubin (DB 35-206) who, in turn, sold it to Charles R. Jones in 1924 (DB 47-387). His daughter Emma B. Henshaw inherited it and owned it until 1979 (WB 4-229). During that half-century, the house was used variously as a boarding house, tourist home, and rooming house. The High Street Land Trust purchased the house in 1979 (DB 399-371) and sold it in 1982 to the 800 East High Street Land Trust (DB 428-228) which renovated it and sold it to the Bacchus Land Trust in 1983 (DB 436-267).

53-184 ✓

B-1  
57.1 x 85.3 (4871)

### 800 E High

PO 1524, 22902

436-267 John A Schwab Sr, et al, Trustees for Backus Land Tr 1983 \$210,000 plat 436-272

428-225 Joe W. Richmond, Sr, et al, Trustees for 800 E High St Land Trust 1982 \$94,000 at auction

377-371 James B Murray, Jr, Trustee for the High St Land Tr 1979 \$65,000

WB4-229 Emma B. Henshaw 1937

47-387? Charles R Jones 1924?

142-5, 1-fam, 38% basement, 11 rooms, 4 fireplaces, 2 1/2 b  
c. 1890, w/ concrete  
concrete blk found, brick walls, metal gable & hvy  
1982 - renovation

Randolph 1900-1904 = 4 yr

Elliott 1904-1920 = 16"

<sup>13</sup> Jones / <sup>1937</sup> Henshaw <sup>42</sup> 1924-1979 = 55 yr

Randolph - Henshaw House

1900

Porte where is on 1920 Sanborn map (AHS)

1927



~~250~~ 320

800 E High

WB # - 229 Charles R. Jones  
to son <sup>son</sup> Emma B. Henshaw, house & lot at 8th & High  
(DB 89-371)

DB 89-371 Marian J & J B Belk, ~~CR Jones, Alice J Tamplin~~  
6/1/1936 CR Jones & Alice T Jones, Dr J. P & Berta Barth Jones,  
Emma J & Phillips B Henshaw → CR Jones, Sr  
house owned by Mary Bell Jones (mom CR Sr)  
same as 49-198

49-198 CR → Mary B. Jones  
1/22/1924 same as 49-287  
1924 - Morris & Annie Rubin → Charles R Jones

49-387 Morris & Annie Rubin → Charles R Jones \$12,000  
6/25/1924 #800 E High  
part of 35-206

35-206 Milward C & Willie R. Elliott → Morris Rubin \$11,250  
4/10/1920 #800 E High  
same as 28-268

~~268~~  
28-268 266 EM Elliott, wid → MC Elliott \$17,000  
4/15/1916 western half of 15-188

15-188 Wm & Mary W Randolph → Ellie M Elliott (mom Wm F)  
4/30/1904 see 10-194

10-194 John W & Mary L Fishburne → Mary W Randolph (mom Wm M) \$1750  
10/21/1897 lot 8th & High, 50' on High, 137' on 8th  
part of tract for C D Fishburne 1898



10-183 C.D. Fishburne → John W. Fishburne  
 9/15/1898 "all of that <sup>portion</sup> vacant lot or parcel of land... High St, 8th

Tax

|              |                  |             |                          |                                |
|--------------|------------------|-------------|--------------------------|--------------------------------|
| 1899         | C.D. Fishburne   | S side High | 400 + 0 = 400            |                                |
| 1900         | J.W. " "         | " "         | 200 + 0 = 200            | for C.D. Fishburne             |
| 1901         | " "              | " "         | <del>400 + 0 = 400</del> |                                |
|              | Mary W. Randolph | E "         | 700 + 2500 = 3200        | bdg added                      |
| 1900         | " "              | S "         | 200 + 0 = 200            | for J.W. Fishburne             |
| 1914, 15 1st | Ellie M. Elliott | 800 High St | 1000 + 3000 = 4000       | (+ adj lot)                    |
| 1916         | " "              | " "         | " + 3500 = 4500          |                                |
| " 17         | J.F. Elliott Jr  | pt 2105 "   | 1000 + 2500 = 3500       | for E.M.E. Elliott, bldg added |
| 1917, '20    | M.C. Elliott     | " 800 "     | 1000 + 3500 = 4500       | for E.M.E. Elliott             |

800 E. High

- 379-371 Emma B. Henshaw (wid) → James B. Murray, Jr. #65,000  
1/5/1979 Tr for <sup>the</sup> High St Land Trust  
800 E High, 57' x 86'  
same as inherited for Chas R Jones 1937 (WB 4-229)  
see 47-387, 1924, Rubin → Jones  
47-198, 1924, Chas R Jones → Mary Bell Jones  
87-371, 1936, Marjorie Bell et al → ~~Chas R Jones~~
- 47-387 Morrie & Annie Rubin → Charles R Jones #12,000  
6/25/1924 800 E High, 57' x ~~57'~~ of house  
part of 35-206, reserving lot behind on Jefferson St
- 35-206 Millard C & Willie B Elliott → Morrie Rubin #11,250  
4/10/1920 800 E High, 57' x 137 1/2'  
same as 28-268
- 28-266 <sup>EM</sup> Elliott (wid) → ~~EM~~ M E Elliott #7,000  
4/15/1916 western half of 15-188  
(eastern " → J F Elliott, Jr, 1915, 28-2)
- 28-2 #2,000
- 15-188 W M & Mary W Randolph → Ellie M Elliott (now John F. Elliott)  
4/30/1904 in exchange for tract in abto (10 1/4 ac)  
E High & 8th, ~~abto~~  
acquired by 2 deeds: 10-194, 13-351



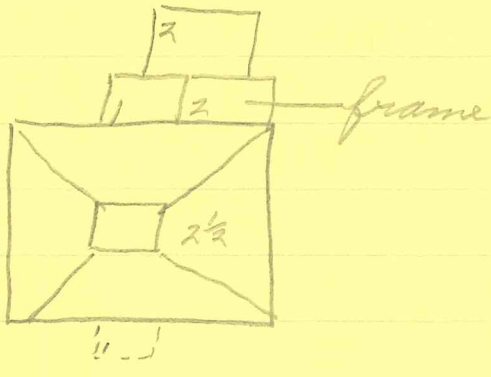
13-351 John W & Mary L Fishburne → Wm M Randolph, \$1,615  
1/27/1903 lot on E High bet Randolph & Mirajah Woods, → Jefferson St  
same as 10-183, see 10-194

10-194 John W & Mary L Fishburne → Mary W Randolph \$1,250  
10/21/1897 lot at corner E High & 8th, 50' x 134'  
same as

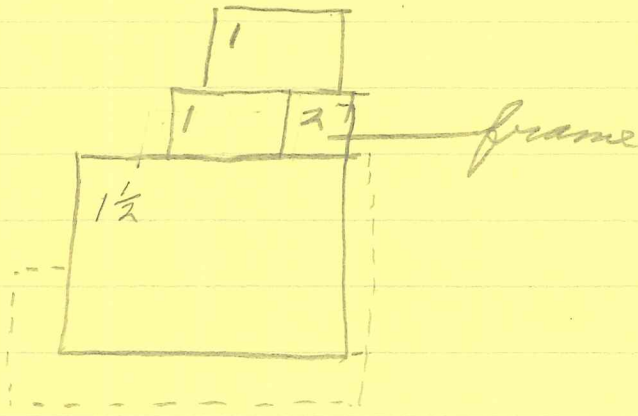
10-183 C D & L W Fishburne → John W Fishburne  
9/15/1898 for natural love & affection  
lot bounded by 8th, High, Mirajah Woods, & Jeff. St.  
same as ACDB 75-50, 1879

ACDB John M. White, spec commr in chancery caused M<sup>rs</sup> Antineas  
75-50 Anderson → C D Fishburne, at auction, 1878 \$350  
1879 western third of vacant lot fronting 114' 3" on High & 104' 11" on Jefferson,  
adj Mirajah Woods on east  
formerly part of David Anderson's est.

1907



2/1920



A B C

1920 ACHS  
1896

2-5 brick porch  
1-5 frame 2-5 brick

1907

1-5 " 2-5 " wing " "

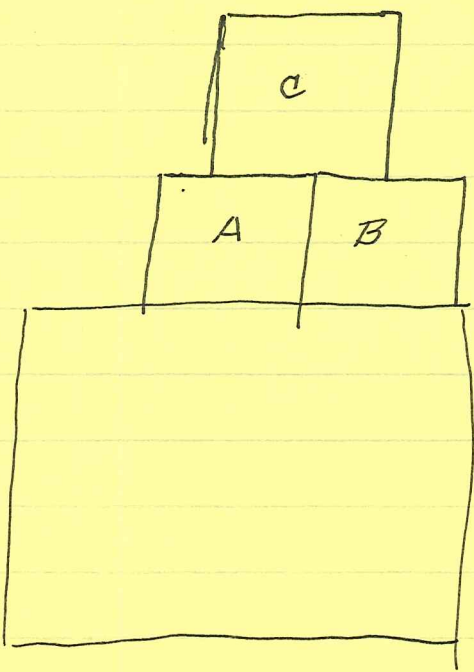
1929-57  
1920 ACHS

2-5 " " " " "

1920 RBR

1-5 " " " 1-5 "

1929-57





- facade of dormers
- glazing of other dormers

800 E High

2 1/2, 3-bay, double pile

high found 5-c am bond, stepped water table

5-c am-wf-Flem

steps truncated hips roof, pressed tin, proj eaves ~~and eaves~~,  
boxed cornice w/ dentils (or on a narrow frieze??),  
gutters

windows 2 1/2, seg-arched, plain trim, wooden sills,  
once had shutters, 1st level facade very wide, also rear of W  
side, 2 hit both levels

1-5 veranda covers ~~for~~ facade & most W side

roof - metal, nearly flat

proj eaves, <sup>matching</sup> boxed cornice & entab, Tuscan columns,  
coupled at <sup>corners</sup> ~~ends of facade~~

plain bal w/ thin chips bet coupled columns

side portion end; 1/1 windows w/ a panel below each,  
columns removed

cent entrance - 1 c / 1 panel rect transom, sidelights w/  
large diamond glazing over panels, seg-arched

2 int end chim E side <sup>not capped</sup> & one at W side of rear; <sup>capped</sup> not capped

group 3 dormers, <sup>centered</sup> on facade, large one flanked by  
smaller ones set at lower:

all have pedimented ~~gables~~ <sup>gables</sup> w/ plain boxed

cornices, sides covered w/ pressed tin, ? on facade,

& windows w/ thin chips glazing in top sash (1 in smaller  
3 in larger)

1 sm dormer cent E, 0 rear, med on W w/ ~~pan~~

2 windows



Porch ~~may~~ once ~~have~~ extended to 1st E side window (outline of column visible). This was probably a porte cochere

wing 2. storey rear wing covers <sup>most of</sup> W bay & part of center brickwork & windows, <sup>& roof</sup> match; red gable <sup>roof</sup> sm capped int end chim rear. <sup>not quite as steep</sup>  
2 smaller windows; ~~at~~

wing? sm flat-roofed add'n in corner was orig 1-5 (2nd storey radder & 7-c am & w of red seg-arched por 6-12 cement); cornice matches, so may have been porch above

sh encl (alum.) shed-roofed back porch for sm add'n to E corner

2. 5 flat-roofed, <sup>porch</sup> ent porch SW corner also mura encl

central ent. hall

<sup>3</sup>/<sub>4</sub>-fl open-well stair w/ V in bal in stair hall (cont. of ent) <sup>to center n</sup> ~~across~~ ~~to rear~~ of main section; encl attic stair above plain trim

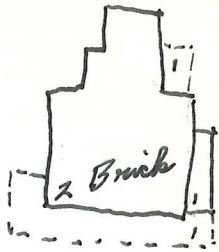
round-arched of transom to rear hall

parlor (E) mantel has marble surround <sup>& height</sup> fluted columns, egg-dart (or <sup>& tongue</sup>) moulding, columned over-mantel w/ sculpture

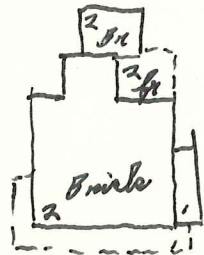
center bay 2nd level facade; seg-arched composition of 2 sm 4/4 w/ paneled spandrels & glass sheetles w/ diamond glazing in upper half, & diamond-paned rect. transom

1 basement window





1896



1920

central hall  
plain trim of cornice?  
paneled spandrels  
under windows  
2-fl open stair  
parlor mantel -  
fluted columns above  
molded  
molded  
egg-dent  
dr mantel, corner  
fluted pilasters  
egg-dent

~~Hand-drawn sketch of a house facade with a gabled roof and a chimney.~~  
Henshaw house  
800 E. High



# 478

800 E. High Street

CITY OF CHARLOTTESVILLE

Department of Community Development

City Hall

Charlottesville, Virginia 22902