

# Architectural And Historic Survey



## Identification

**STREET ADDRESS:** Preston Avenue & McIntire Road  
**MAP & PARCEL:** 35-134  
**CENSUS TRACT AND BLOCK:**  
**PRESENT ZONING:** B-1  
**ORIGINAL OWNER:** City of Charlottesville  
**ORIGINAL USE:** School  
**PRESENT USE:** Offices  
**PRESENT OWNER:** County of Albemarle  
**ADDRESS:** County Office Building  
 Charlottesville, Virginia 22901

**HISTORIC NAME:** Lane High School  
**DATE / PERIOD:** 1940, 1954-55, c. 1978-1983  
**STYLE:** Colonial Revival  
**HEIGHT (to cornice) OR STORIES:** 3,2 storeys  
**DIMENSIONS AND LAND AREA:** 14.625 acres  
**CONDITION:** Good  
**SURVEYOR:** Bibb  
**DATE OF SURVEY:** Winter 1983  
**SOURCES:** City Records                      Floyd E. Johnson  
 The Daily Progress, Ch'ville Bicentennial  
 edition, 4/13/62

## ARCHITECTURAL DESCRIPTION

The Lane High School building is basically an E-shaped composition, consisting of a central pavilion with an auditorium wing behind it and flanking wings connecting it to end pavilions which also extend to the rear. The building is set on a very high English basement with a concrete water table. Wall construction is of brick laid in Flemish bond throughout the building. Windows throughout the building, including the basement level, were originally double-sash, 12-over-12 light, the same height at all three levels. They have been replaced with smaller 6-over-6 light windows with panels above them, set within the original openings. The 2-storey, 9-bay central block has a steep gable roof covered with slate, with projecting eaves and verges and an entablature with modillions. An octagonal wooden cupola with round-arched louvered air vents is set on a square brick base with an entablature and balustrade. It has a domical metal roof with a weathervane. There is a single window with jack arch and stone keystone in each bay. A 2-storey pedimented Tuscan portico covers the center three bays of the facade. In each bay at the first level there is a pair of 6-paneled doors with a semi-circular fanlight. Except for the central pavilion, all sections have flat roofs covered with tar & gravel and an entablature set below the top of the parapet. Two-storey 6-bay pilastered wings connect the end pavilions to the central pavilion. There is a pair of windows in each bay. The end pavilions are set perpendicular to the central pavilion and side wings, projecting to the rear. They are seven bays long, with a pair of windows in each bay, but lacking the pilasters. There was a small, one-storey, flat-roofed Tuscan portico with roof balustrade at the rear of the south pavilion and in the third bay from the front on the side elevations of both pavilions. The double doors had a multi-light rectangular transom. These entrances were set on the stair landing between the basement and the first storey. Above them a tall, circular-headed, double-sash window lit the upper stair landing. The porticoes, entrances, and windows have been removed from the side elevations, the northern one replaced by a new basement-level entrance, and the southern one replaced by a drive-in window. Rear entrances flanking the auditorium wing, at the rear of the north pavilion, and on the rear elevation of the gymnasium and band additions are sheltered by bellcast metal hoods. The 2-storey auditorium wing is four bays long with brick pilasters supporting a concrete band on the parapet. The multi-light, double-sash windows are round-arched and two storeys in height. A one-storey passageway along the south side gives access to the windowless stage area at the rear. There is an open arcaded passageway at the basement level.

The gymnasium, projecting from the northwest rear corner of the building, is seven bays wide and two-storeys tall, the first storey being at basement level. Pilasters support an entablature on the facade. There is a one-storey central entrance portico matching the secondary entrances in the main block, except that it is at ground level. There is a single 8-over-8 light window in each bay. On the rear elevation, brick pilasters support a concrete band on the parapet. One-storey wings with round-arched windows on the facade cover the northern and southern elevations. A 1955 addition, housing a band practice room on the first storey level and locker room at the basement level, is located behind the northern pavilion and is connected to the auditorium wing at the first storey level, with a semi-elliptical arch below it.

## HISTORICAL DESCRIPTION

The City of Charlottesville purchased a large tract of land on Preston Avenue in 1940 (City DB 96-368, 102-366, 103-36, 106-366). The plan to build a high school in the marshy area along Schenk's Branch initially met with opposition because it was considered unhealthful. Lane High School opened in the fall of 1940, replacing the old Midway High School, which had been re-named in 1924 in honor of former principal James W. Lane. Pendleton Clark of Lynchburg was the architect for the new building. A fire damaged the third storey of the central pavilion in 1954. An addition to house a band rehearsal room and locker rooms was built in 1954-1955. Lane High School was closed for the 1959 fall semester under Virginia's "Massive Resistance" laws. It re-opened for the spring semester and was desegregated in September 1959. After Charlottesville High School was built, Lane High School was closed in the spring of 1974. It was sold to Albemarle County in 1978 (DB 394-112) and extensively remodeled for use as a county office building.

35-134 ✓

B-1  
14,625 ac

#476

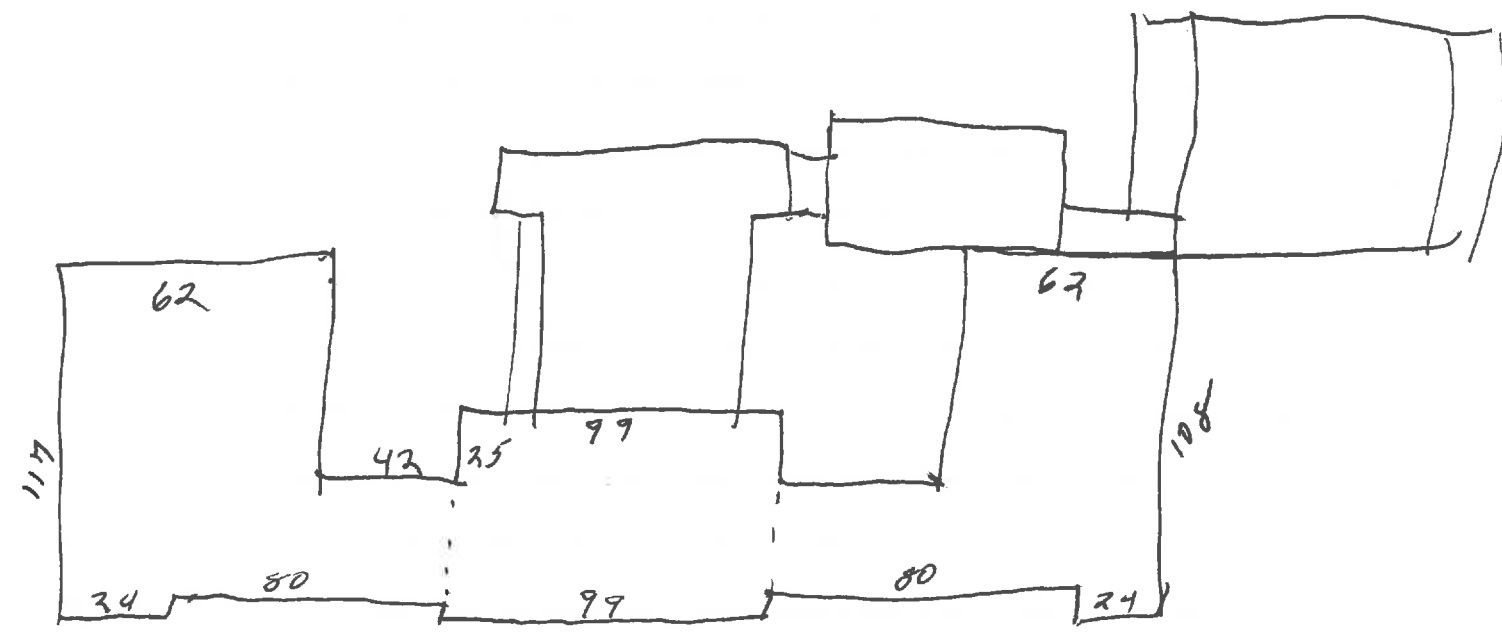
Lane



394-112	Co. of Alb.	1978	plat 394-119
116-396	Sch Bd of City of Ch'v	1944	" 116-398
106-366 103-36 102-366 96-368	} City of Ch'v	- 1940	" 102-368, 106-368

see also 348-111 (1973) & 350-542 (1973) - ~~no~~ street widening

7-3  
 conc found, brick walls, slate hip roof  
 built 1941 & 1955, good const  
 1964 - repair fire damage  
 1954 - addn locker room



1905

1905

Moore —

Biden. Proog

Midway renamed Lane 1924 for James W Lane, principal 1895-1919

& sept. 1905-1909

Lane opened 1940

1905-1909 (1905-1909) 11-250-1000

1905-1909 (1905-1909) 11-250-1000



ent bay pay

2 6/6 w/ spandrel - ends

N portico replaced at ground level, very mod door  
6/6 wind

system 3 - bay on rear, RC per bay

conc band replaces entab inside E & on gym

III metal hood over 2 rear ent & gym & band & N leg E, by gym N

auditorium ~~plate~~ 4 - bay, round arched, recessed bet piers  
arcaded at basement, semi-elliptical w/ keystone  
"something" surrounds stage area

seg-arch under bridge

band / locker 12/12 9/9 | 15/15 | 9/9 12/12

gym - brick pilasters to conc band, <sup>conc</sup> on facade

7 - bay rear

portico + ent cent facade = ends of bldg

ent of returns cent block

1955 chain - 3rd 5 - 24 per sq. 8/8 on rear et., overlooking auditorium roof

1959 " " 3 per 12/12

"

✓ banding:

✓ water table:

surrounds

auditorium windows

