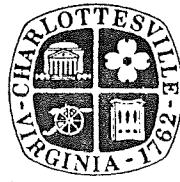


# Architectural And Historic Survey



## Identification

<b>STREET ADDRESS:</b> 801 E. High Street	<b>HISTORIC NAME:</b> C. D. Fishburne House
<b>MAP &amp; PARCEL:</b> 53-194	<b>DATE / PERIOD:</b> 1873, 1955
<b>CENSUS TRACT AND BLOCK:</b>	<b>STYLE:</b> Victorian
<b>PRESENT ZONING:</b> B-1	<b>HEIGHT (to cornice) OR STORIES:</b> 2 storeys
<b>ORIGINAL OWNER:</b> Clement D. Fishburne	<b>DIMENSIONS AND LAND AREA:</b> 97.25' x 145.46' (15,814 sq.ft.)
<b>ORIGINAL USE:</b> Residence	<b>CONDITION:</b> Good
<b>PRESENT USE:</b> Offices	<b>SURVEYOR:</b> Bibb
<b>PRESENT OWNER:</b> James C. & Katherine M. Andrews	<b>DATE OF SURVEY:</b> Summer 1983
<b>ADDRESS:</b> 801 E. High Street	<b>SOURCES:</b> City/County Records Dr. James C. Andrews
Charlottesville, VA 22901	Sanborn Map Co. - 1896, 1907
	Alexander, <u>Recollections of Early Ch'ville</u>

## ARCHITECTURAL DESCRIPTION

This is a 2-storey, 2-bay, double-pile Victorian house with a 2-storey, 2-bay, single-pile wing covering the rear half of the east side. Its appearance has been substantially altered by the loss of its veranda. The house is set on a high English basement constructed of brick laid in 5 and 6-course American bond. Wall construction is of brick laid in 5 and 6-course American-with-Flemish bond. There is no water table. The steep gable roof is covered with slate and has projecting eaves and verges, exposed rafter ends, and a sawn bargeboard in the gable ends on the front and rear elevations. The stack of the single central chimney has been rebuilt. The large windows throughout the house are double-sash, 6-over-6 light, with wooden sills, moulded surrounds, and louvered shutters. They are slightly shorter at the second level, and basement windows are still shorter. There is a one-storey semi-octagonal bay window in the front bay on the west side of the house. It has a truncated hip roof; covered with metal, with projecting eaves and an entablature with dentil moulding. Its walls are brick, and it has a narrow 4-over-4 light window in the center plane and very narrow 2-over-2 light windows at the sides. Basement windows are shorter and are recent replacements. There is a small circular-headed 2-over-2 light attic window with a shaped surround in the gable on the facade. The rear gable has a plain square 9-light casement window. The facade was originally covered by a one-storey veranda. The front yard has now been filled in behind a retaining wall and the veranda replaced with a flagstone terrace. The entrance door in the eastern bay of the facade has six lights over two panels, with a 3-light transom and louvered shutters. There are identical doors on the east side and in both bays of the facade of the wing, but it is possible that there were originally windows in those locations. The brick in the foundation and the end and rear walls of the 2-storey east wing is laid in 7-course American bond, while the facade is in 7-course American-with-Flemish bond. Its gable roof is lower pitched than the original section and is covered with standing-seam metal. It has projecting eaves and verges. There is an interior end chimney. The Sanborn maps indicate that there was never a veranda on the wing. A complex of one-storey, shed-roofed back porches enclosed with weatherboarding covers the entire rear elevation. They have now also been enclosed with brick at the basement level. The interior of the original section follows the side hall plan, with high ceilings, large windows, and Victorian mantels.

## HISTORICAL DESCRIPTION

In 1871, Clement D. Fishburne, cashier of the Albemarle Bank, contracted to purchase the 1½-acre lot west of the McIntire House. There was a small brick house on the property, and the occupant was to have use of it until October 1872 (ACDB 67-483). Fishburne must have begun construction of his house at that time because it was completed by the time Alexander described the area in January 1874. This house was the home of the Fishburne family for eighty years. The east wing was added sometime between 1877 and 1896, according to the Gray and Sanborn maps. Charles W. Hurt and Dr. James C. Andrews bought the house from Fishburne's granddaughter in 1955 (City DB 183-65). They remodeled it for use as offices, removed the veranda, and filled in the front yard. The brick summer kitchen and servants' quarters were found to be too badly deteriorated for restoration, and so they were demolished and the brick used in the remodeling of the house. The adaptive re-use of the house was awarded the Civic League's Certificate of Merit in 1955. Dr. Andrews still occupies the main floor office.

Additional References: ACDB 145-322; City DB 37-214, 214-320, 431-66 & 68; City WB 1-240, 6-474, 7-215.

53-194

B-1  
97.25 x 145.46 (15,814)

801 E High St

431-66,68	James C & Katherine M. Andrews	1982	int
214-320	" " "	1959	plat 198-467
183-65	Chas W Hunt & James C Andrews	1955	
WB 7-214	Lydia HF Blackford	1953	
ADD 37 67-483	Florence Fishburne Johnson		
WB 6-474	C D Fishburne		plat 37-214

2-3 + base, 4 offices  
 brick & concrete found, brick walls, metal, slate, & corr. shing. gable roof  
 4 fireplaces  
 remodeled 1955, converted to offices

Alexander: in 1/1874, describes this house as having been built since 1830.  
Rawlings note says built by C.D. Fishburne

18964

Sanborn maps: 1920 (ACHS) — wing there & continuous w/ main block;  
veranda on facade of main block, but not side or wing



1929 same

2/1920 (RBR) } 1-5 back porch in equal thirds  
1907 } windows not shown

1877 Gray maps:



1953 City Dir — Florence J. Fishburne — 803 E. High St.  
801 E. High St. vacant

801 E. High St

183-65  
~~65-2483~~  
4/2/1953-

Lydia Harper Fishburne Blackford, wid → Chas W & Letitia P. Hunt  
& James L & Katherine M. Andrews  
a  $\frac{2}{3}$  undivided int to Hunts &  $\frac{1}{3}$  to Andrews  
lot w/ bldgs, 97'3" on north side E High x 97'3" on ~~the~~ east side  
8th NE x 122' on south side Maple St x 342' to dead

~~same as~~

willed to Mrs Blackford by Florence J. Fishburne 1953  
(WB 7-215)

see also: will of C D Fishburne, 1951, WB 6-474

DB 37-214, 1921, for Geo. P. Fishburne

will of C D Fishburne, 1907, WB 1-240

ACDB 145-322, 1909, John W Fishburne → C D Fishburne et al

ACDB 67-483, 1872, Eugene Davis → C D Fishburne

WB 7-215-

will of Florence J. Fishburne  
all to Lydia Harper Fishburne Blackford

37-214

George P. Fishburne, S → C D Fishburne

1/1/1921

his  $\frac{1}{2}$  int in lot on High St bounded by former Micajah  
Woods lot on E, (8th St), ~~Maple St~~ Maplewood Ln,  
same as ACDB 67-483, except lot → Woods 1874 (ACDB 67-256)  
C D Fishburne left property to wid. M L, then to sons John W,  
C D, & Geo P

ACDB 145-322, 1909, John W deeded his int to other 2

~~now~~ J W Fishburne has died

ACDB

Eugene Davis -> CD Fishburne

\$2100

67-483

contract 11/10/1871

12/24/1872

1 1/2-acre lot in Chgo immed west of Sec 21 21 = entire

"all that lot on which was a sm brick home thereon

occupied by the fam of Thos Drew ... on SW corner

cross street on west, N of High

occupancy of home kept until 11/1/72

801 E High

1873

CD Fishburne

2101

+2500 = 3000

for Davis \$2000 added for impts

wing, couldn't  
be the older house,  
could it?

801 E High

- ~~1872 Eugene Davis 200 2 m SW + = 600~~
- ~~1873 " " " " " "~~
- ~~" 74, 88 CD Fishburne " county~~
- ~~1874 " " part L 191 + 3000 = 5500~~
- 1888, 85 CD Fishburne " L 101 1000 + 2800 = 3800
- 1882, 81 " " " 250 + 2850 = 3100
- 1878, 80 " " " 250 + 2500 = 2750
- 1872 " " " " " "
- " Eugene Davis part L 101 + 500 = 1500 ~~+ 1500~~
- 1873 " " " " " "
- " CD Fishburne " + 2500 = 3000 *for E. Davis \$2000 added for mptk*
- 1872, 91<sup>94</sup> 1st " " " " " " + 3000 = ~~3000~~ 3800
- 1889, 90 " " " " " " + 2800 = 3800
- 1907, 10 " " <sup>est</sup> 803 High - L 101 - 800 + 3000 = 3800
- 1918, 20, 22 " " " " " " 2000 + 3500 = 5500

1872 Davis 1000 + 500 = 1500

1873 Fishburne 500 + 2500 = 3000 *\$2000 added*

1878, 80 " 250 + " = 2750

1882, 81 " " " " " "

1888, 85 " " " " " "

summary

1872  $1000 + 500 = 1500$

1873  $500 + 2500 = 3000$  \$2000 impts

1878-80  $250 + \text{"} = 2750$

1881-82  $\text{"} + 2850 = 3100$

~~1885-1890~~ <sup>1890</sup>  $1000 + 2800 = 3800$

~~1891-1910~~ <sup>1910</sup>  $800 + 3000 = \text{"}$

1918-1922  $2000 + 3500 = 5500$

801 E High

2-5, 2-bay, double pile, w/ E wing  
high found, ~~above~~ basement above ground at rear, no  
water table, 546-e am  
brick 5-6 e am-w/ 15-lm

also

steep gable roof, slate, proj eaves & verges, exposed rafter  
ends, nice sawn bargeboard front & rear  
E wing has 55m roof

windows 6/6 (prob not orig) w/ moulded trim wooden sills  
upper sl shorter, a few lowered shutters left;  
basement same but, shorter

1-5 veranda orig covered facade; <sup>flat roof, cornice</sup> something must

replaced by flagstone terrace w/ wrought iron bal. <sup>also across front of wing</sup>  
something must have been on front of wing, but  
there were no marks

ent doors in E bay of facade, on E side next to wing,  
in both bays on front of wing: 6 l/2 panels, 3-l  
transom, lowered shutters (except side)

cent. chim just w of ridge, stack rebuilt

1-5 semi-ent bay window in 1st bay W side —  
brick truncated hip tin roof, proj eaves, entab  
w/ dentil moulding; <sup>very</sup> narrow 2/2 sides, narrow  
4/4 center, same in basement, but shorter & new

15-l door w/ sidelights rear bay W side basement



rear gable — sq 7-l casement  
 front " — circ-headed 2/2 w/ moulded label



E wing — not orig, stem in rear  
 found. 7x8-c am, no water table  
 7-c am end, 7-c am w/ Flem facade w/ nice joints  
 med gable roof, 55m, pry over + verges, spread  
 rafter ends, just a hint of a bay window  
~~E end~~ int end chin E  
 E end bare except for new basement door window

back porch ~~is~~ across entire rear end of ~~with~~ boarding  
~~with~~ brick found; prob was on piers  
 shed roof, 55m  
 E 1/2 wing, higher roof & larger windows  
 open 1-ft int stair to stair hall  
 back ent basement w/ fluted pilasters  
 group 3 wind cent 1st level

new windows match

Vic mantels; moulded trim; 4-panel doors

tall ceilings, large windows

Civic League ~~lost~~ cit of merit 1953  
 Floyd Johnson's group gave prize  
~~and his fa was arch, now deceased~~  
 Fishburne, Junius's gf  
 for Mrs Staike Blackford who was judge's grand  
 sev 2 across st  
 slave gate to here & Tardton Sq  
 porch "unimpressive"  
 has no old pic  
 down fr st, up to porch  
 encl porch

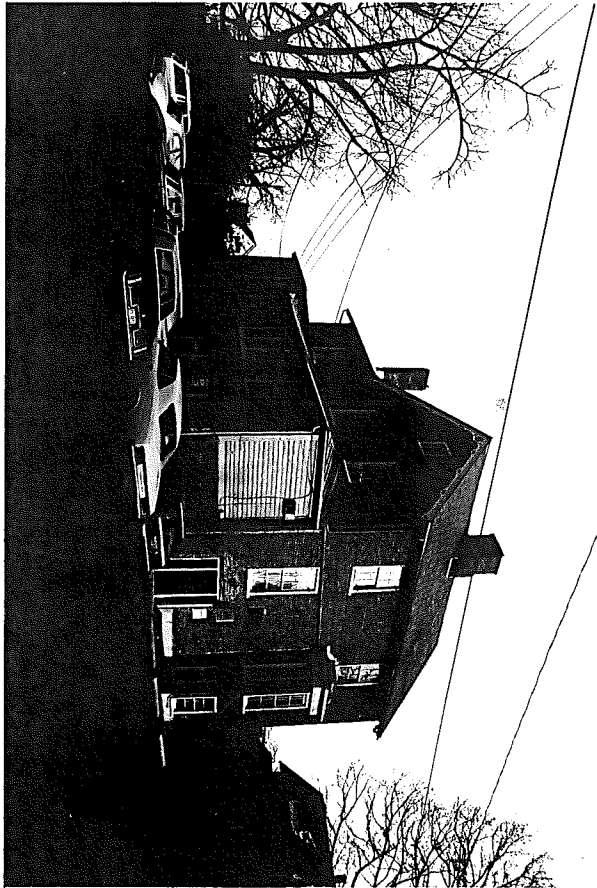
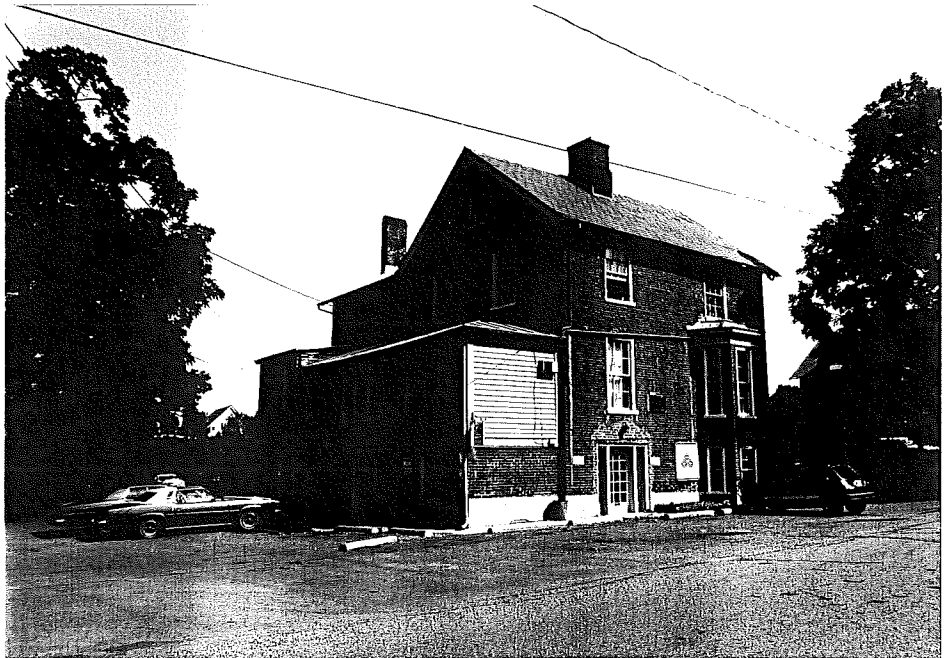
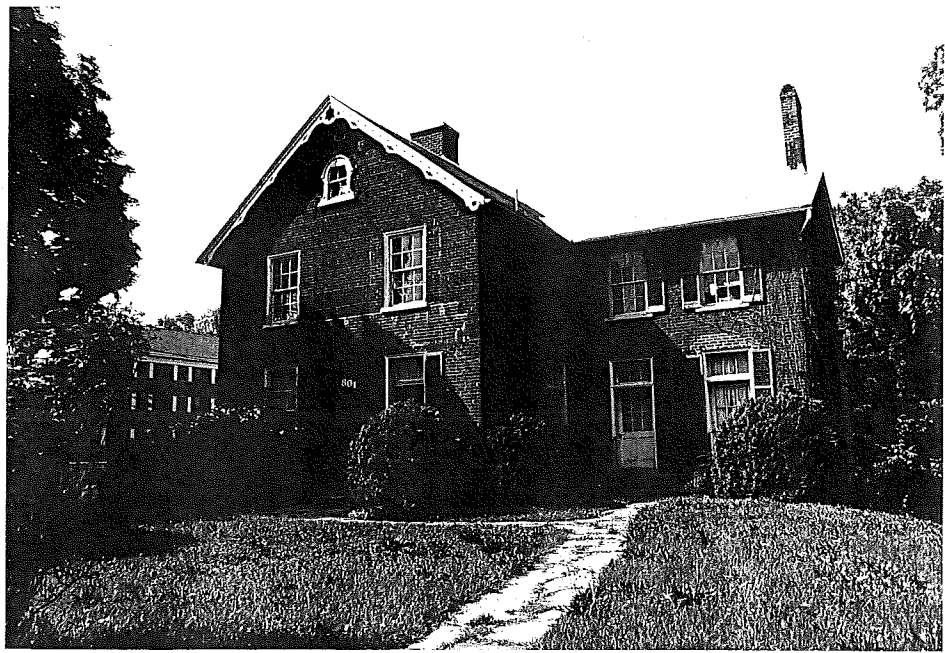
C D Fishburne, 1832-1907<sup>3</sup>, cashier of Alb Bank  
 m. (1) Sarah Waddell (no chn)  
 (2) Elizabeth Wood

1873-1957  
 C D Fishburne, Jr  
 m. Florence Johnson, -1953

Judge John Wood Fishburne, 1868-1941  
 m. Mary Lyons

Lydia H. Fishburne  
 m. Staike D. Blackford, Sr

Junius Roder Fishburne



#477

CITY OF CHARLOTTESVILLE



801 E. High Street

