



10th and Page Neighborhood Park, City of Charlottesville
Landscape Design Neighborhood Review, presented June 6, 2018



Kennon Williams
Landscape Studio



Community Development Block Grant

- Purpose is to benefit low to moderate income persons in the City
- Federal funding spending deadlines
- Setting Council Priorities (September)

10th & Page Priority Neighborhood Task Force



City of Charlottesville
Citizen Participation Plan



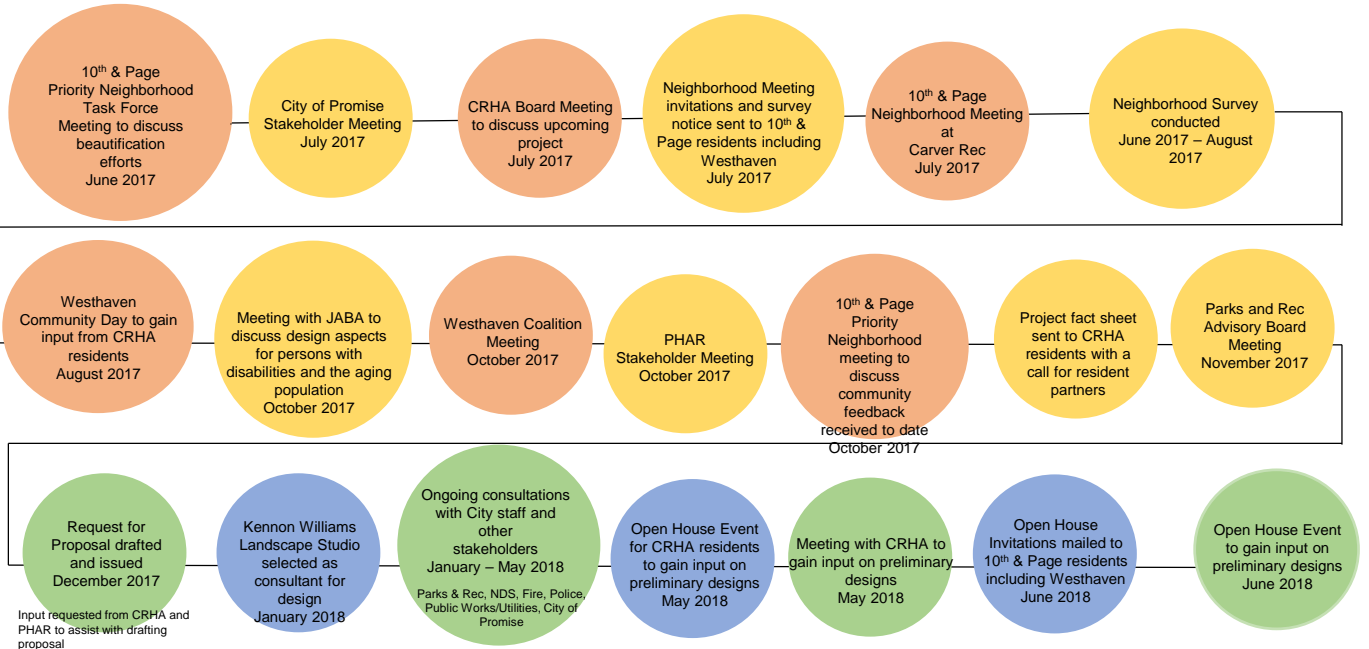
**10th & Page
Priority
Neighborhood
Subcommittee
(Residents)**



**10th & Page
Neighborhood
Priorities**

Adopted: July 18, 2016

Community Engagement Process

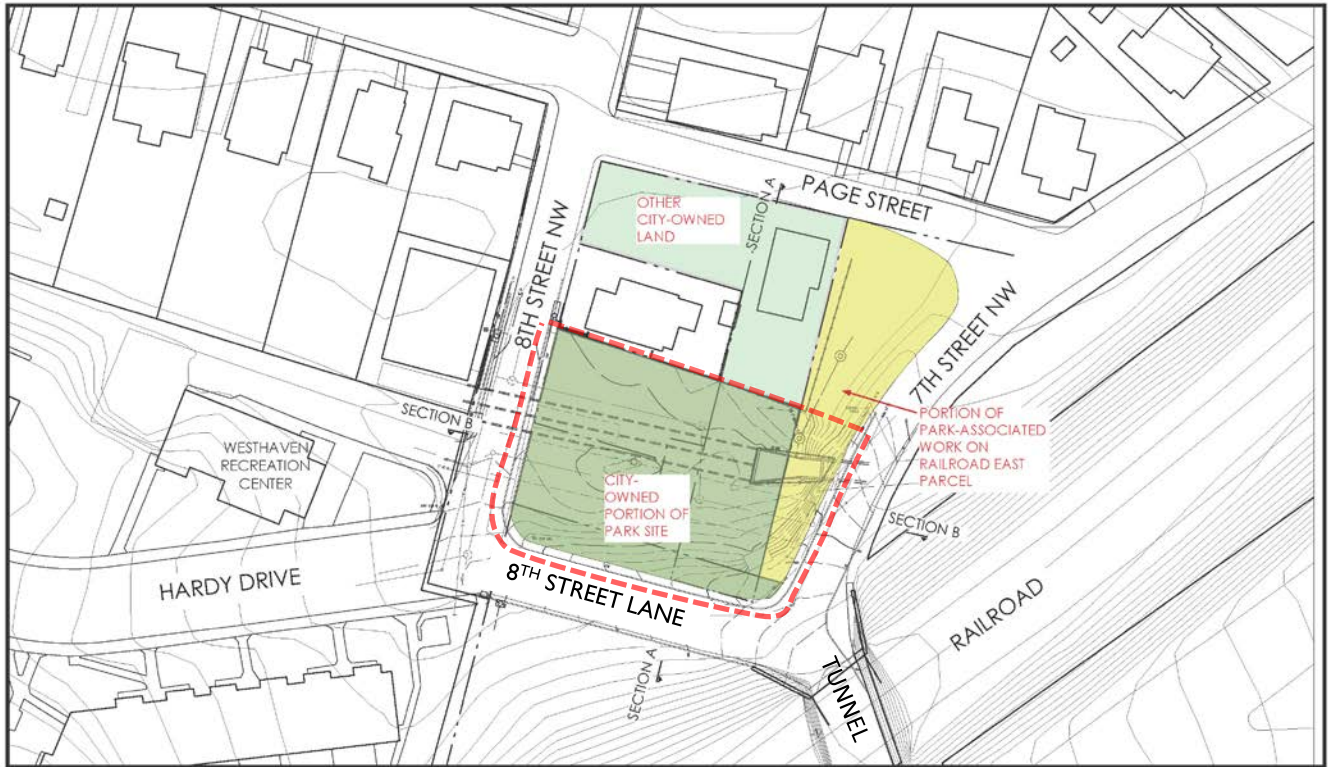


Input requested from CRHA and PHAR to assist with drafting proposal

- 1. CREATE OPEN GREEN SPACE**
- 2. CREATE MULTI-GENERATIONAL SPACE**
- 3. CREATE GATEWAY (ENTRANCE) TO THE NEIGHBORHOOD**
- 4. CREATE COMMUNITY GATHERING SPACE/SOCIAL SPACE (incl. movie screenings)**
- 5. DESIGN FOR PUBLIC SAFETY AND CRIME PREVENTION IN PARK :**
 - **IMPROVE LIGHTING**
 - **IMPROVE SIDEWALK SAFETY**
 - **FEWER ACCESS POINTS**
 - **USE COMMUNITY POLICING THROUGH ENVIR. DESIGN (CPTED) PRINCIPLES**
- 6. TELL THE NEIGHBORHOOD HISTORY**
- 7. PROVIDE SIGNAGE AND ART**
- 8. PROVIDE VEGETATION (trees, flowering plants etc.)**
- 9. LOW MAINTENANCE AND CLEAN FURNISHINGS AND PLANTINGS**



COMMUNITY GOALS

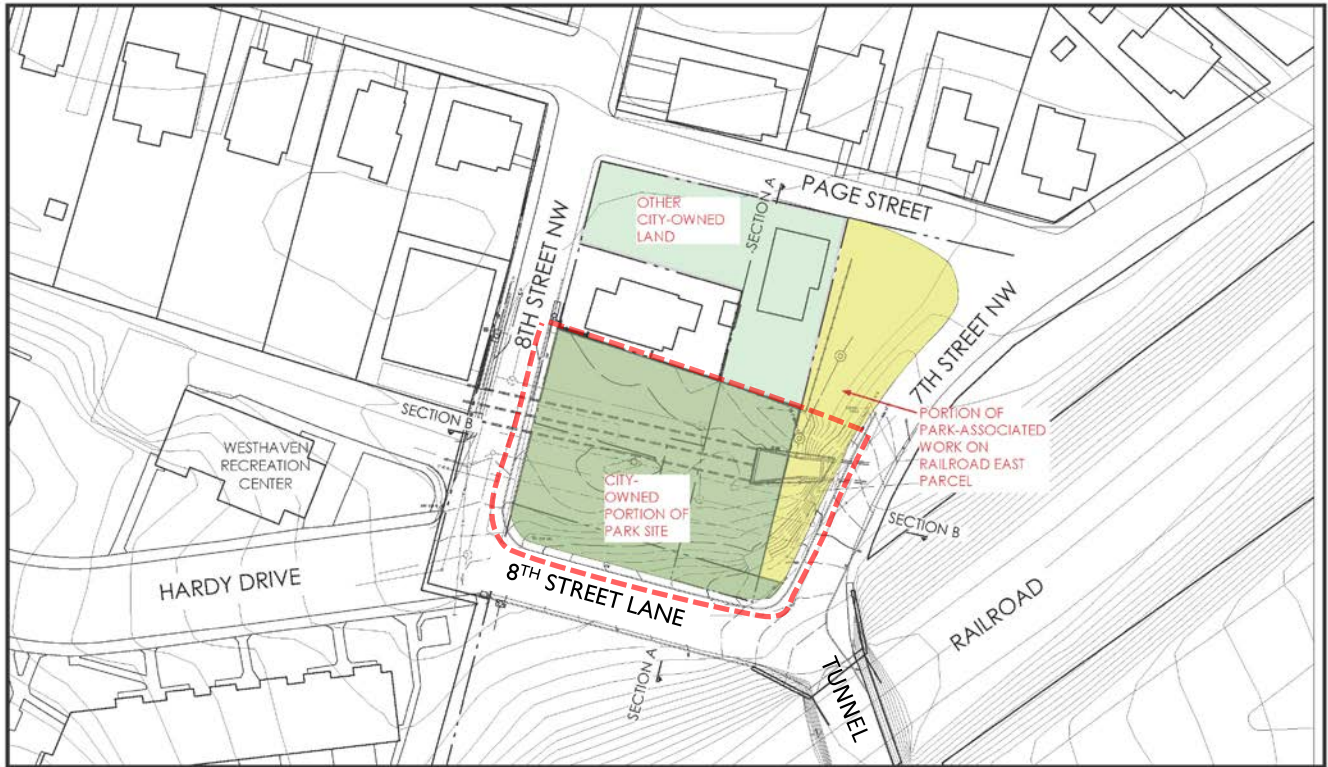


PROPERTY LINE SKETCH

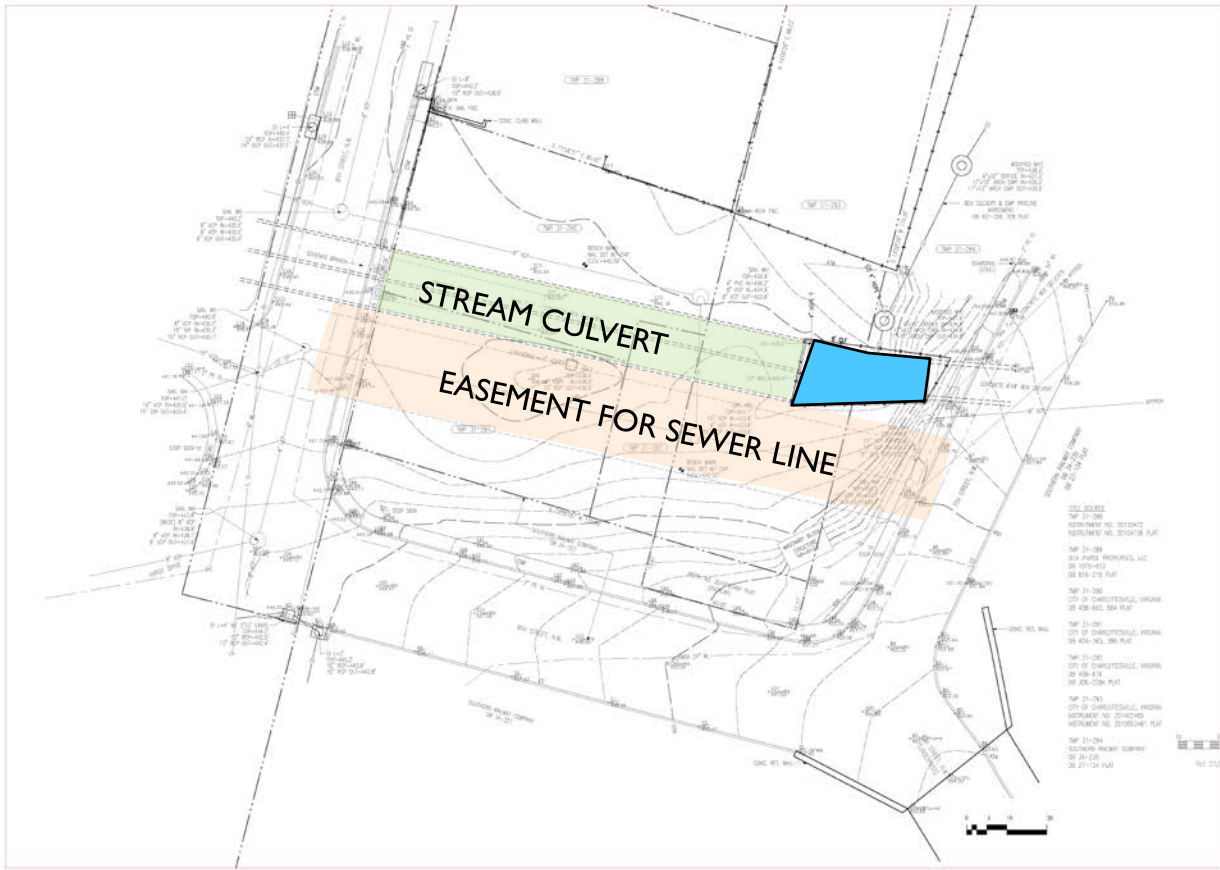


NEIGHBORHOOD CONTEXT

10TH & PAGE NEIGHBORHOOD PARK | NEIGHBORHOOD MEETING | June 6, 2018



PROPERTY LINE SKETCH



NO. Date Issued/Revisions
1. 03.03.2018 000000000

**10th & Page
Neighborhood
Park
CONCEPT DESIGN**

PROJECT NO.: 0000
DRAWN BY: GSB
CHECKED BY: BHW

SITE PLAN

DATE: 04/09/2018
SCALE: 1"=10'

L1.02



UNDERGROUND INFRASTRUCTURE



EXISTING SITE



EXISTING SITE



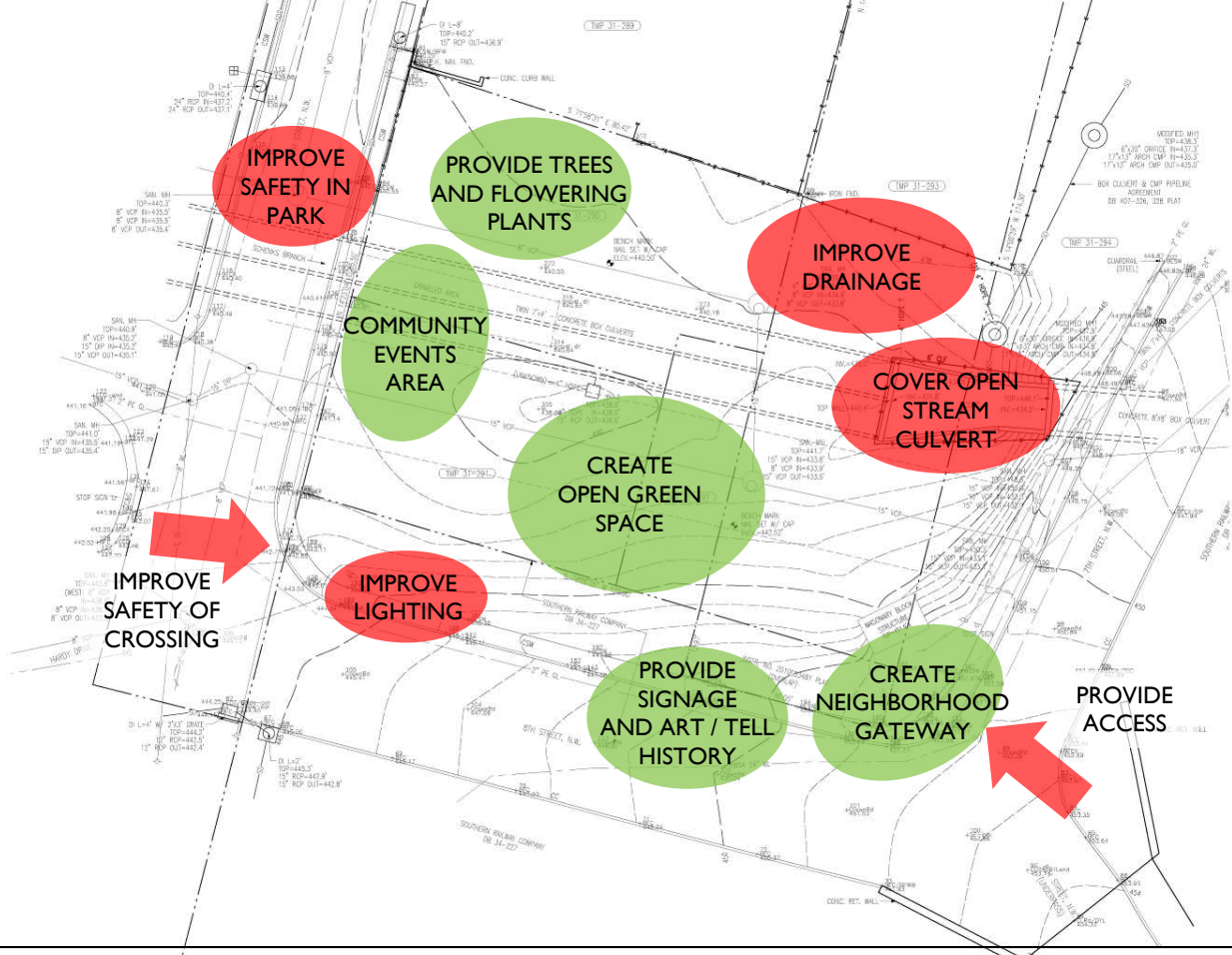
EXISTING CULVERT

10TH & PAGE NEIGHBORHOOD PARK | NEIGHBORHOOD MEETING | June 6, 2018

- 1. CREATE OPEN GREEN SPACE**
- 2. CREATE MULTI-GENERATIONAL SPACE**
- 3. CREATE GATEWAY (ENTRANCE) TO THE NEIGHBORHOOD**
- 4. CREATE COMMUNITY GATHERING SPACE/SOCIAL SPACE (incl. movie screenings)**
- 5. DESIGN FOR PUBLIC SAFETY AND CRIME PREVENTION IN PARK :**
 - **IMPROVE LIGHTING**
 - **IMPROVE SIDEWALK SAFETY**
 - **FEWER ACCESS POINTS**
 - **USE COMMUNITY POLICING THROUGH ENVIR. DESIGN (CPTED) PRINCIPLES**
- 6. TELL THE NEIGHBORHOOD HISTORY**
- 7. PROVIDE SIGNAGE AND ART**
- 8. PROVIDE VEGETATION (trees, flowering plants etc.)**
- 9. LOW MAINTENANCE AND CLEAN FURNISHINGS AND PLANTINGS**



COMMUNITY GOALS



SITE CONTEXT AND PROGRAM



SITE DETAILS: CENTRAL LAWN-Places to sit, play, and gather

10TH & PAGE NEIGHBORHOOD PARK | NEIGHBORHOOD MEETING | June 6, 2018

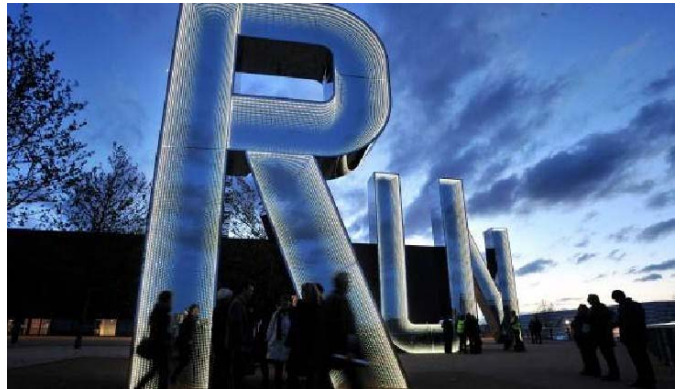
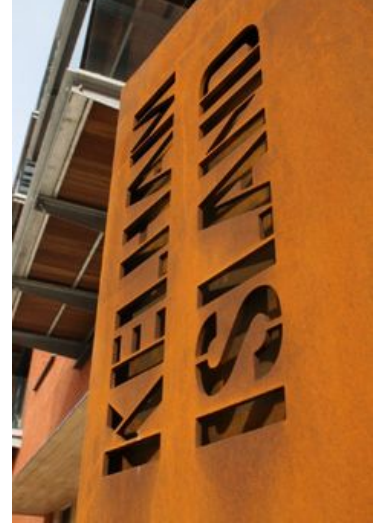


SITE DETAILS: BENCHES & TABLES- Places to sit and be together



SITE DETAILS: GATHERING, NEIGHBORHOOD PARTIES

10TH & PAGE NEIGHBORHOOD PARK | NEIGHBORHOOD MEETING | June 6, 2018



SITE DETAILS: NEIGHBORHOOD GATEWAY SIGN



SITE DETAILS: FENCING



SITE DETAIL OPTIONS:TREES



SITE DETAIL OPTIONS:TREES



SITE DETAIL OPTIONS: FLOWERS GROUNDCOVERS



SITE DETAILS: HISTORICAL MARKERS

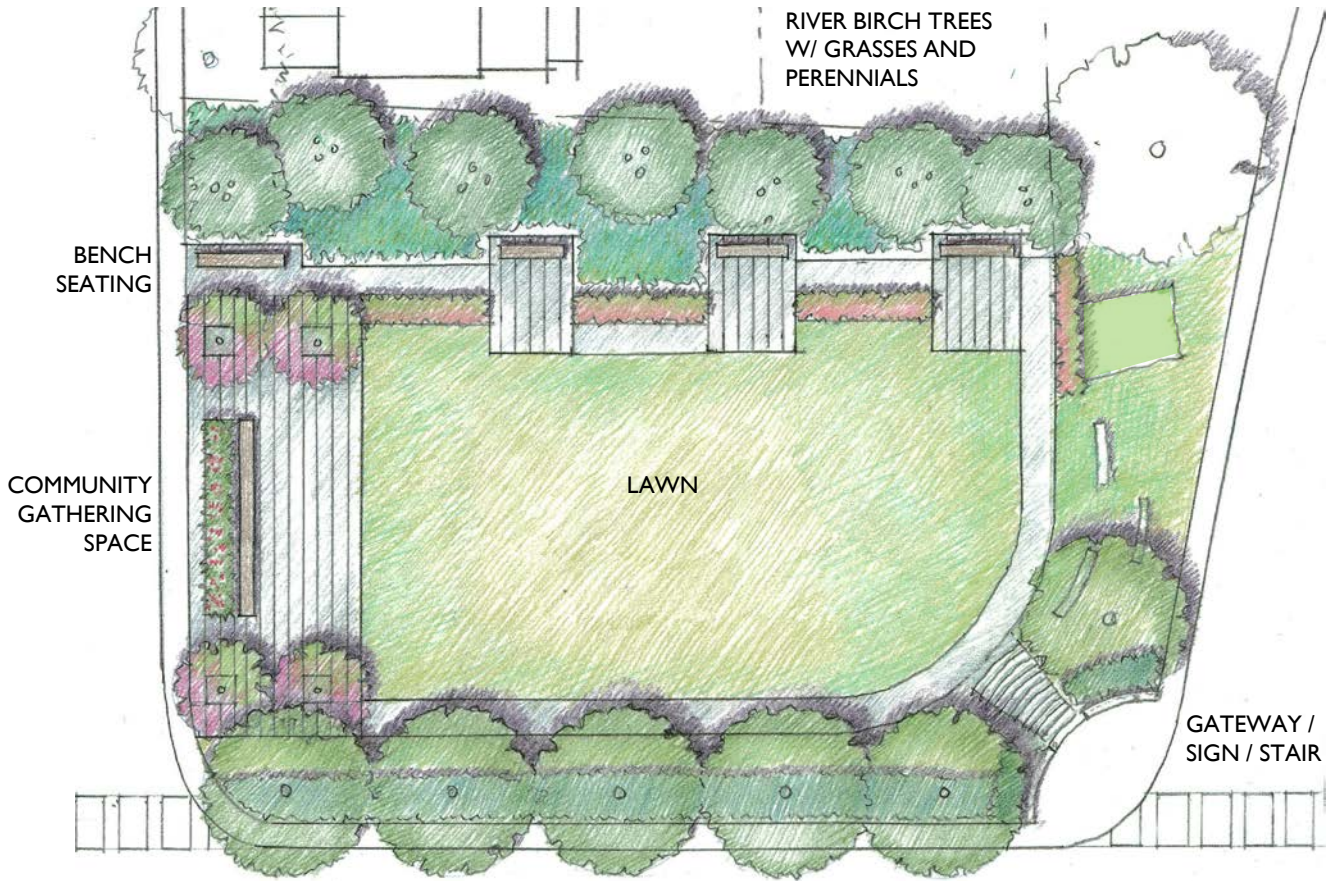


DESIGN OPTION A





PLAN OPTION A



PLAN OPTION A

10TH & PAGE NEIGHBORHOOD PARK | NEIGHBORHOOD MEETING | June 6, 2018





PRELIMINARY 3D VIEW OF OPTION A

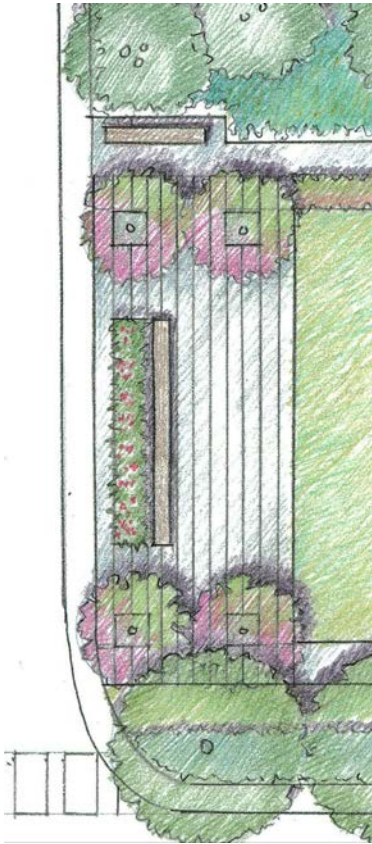
10TH & PAGE NEIGHBORHOOD PARK | NEIGHBORHOOD MEETING | June 6, 2018



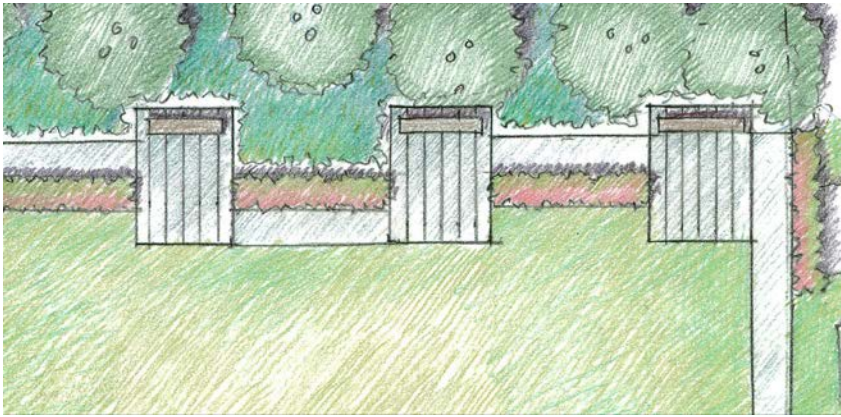
PRELIMINARY 3D VIEW OF OPTION A







PLAN OPTION A: COMMUNITY EVENTS



PLAN OPTION A: SEATING AREAS



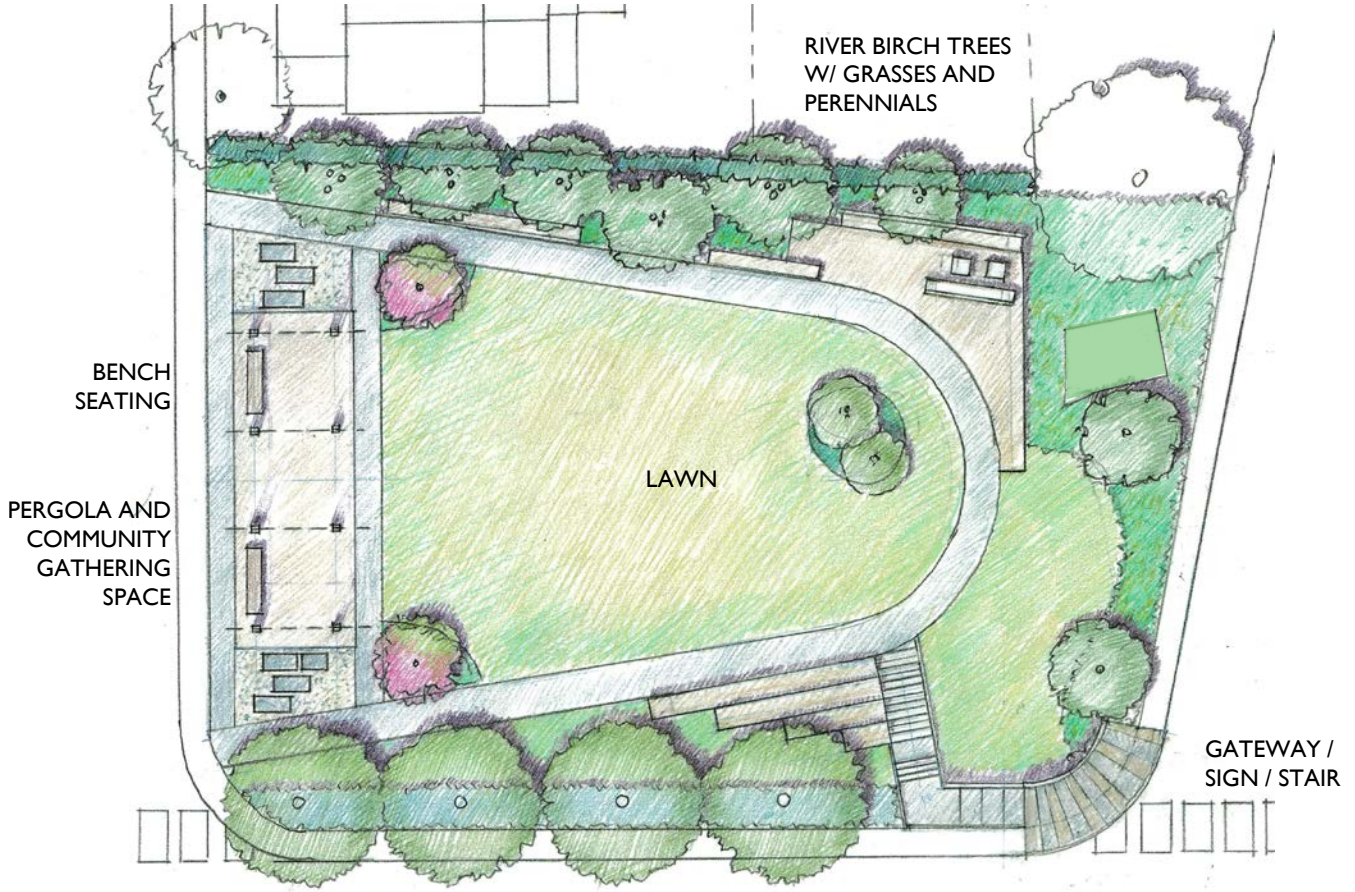
PLAN OPTION A

DESIGN OPTION B





PLAN OPTION B



RIVER BIRCH TREES
W/ GRASSES AND
PERENNIALS

BENCH
SEATING

PERGOLA AND
COMMUNITY
GATHERING
SPACE

LAWN

GATEWAY /
SIGN / STAIR

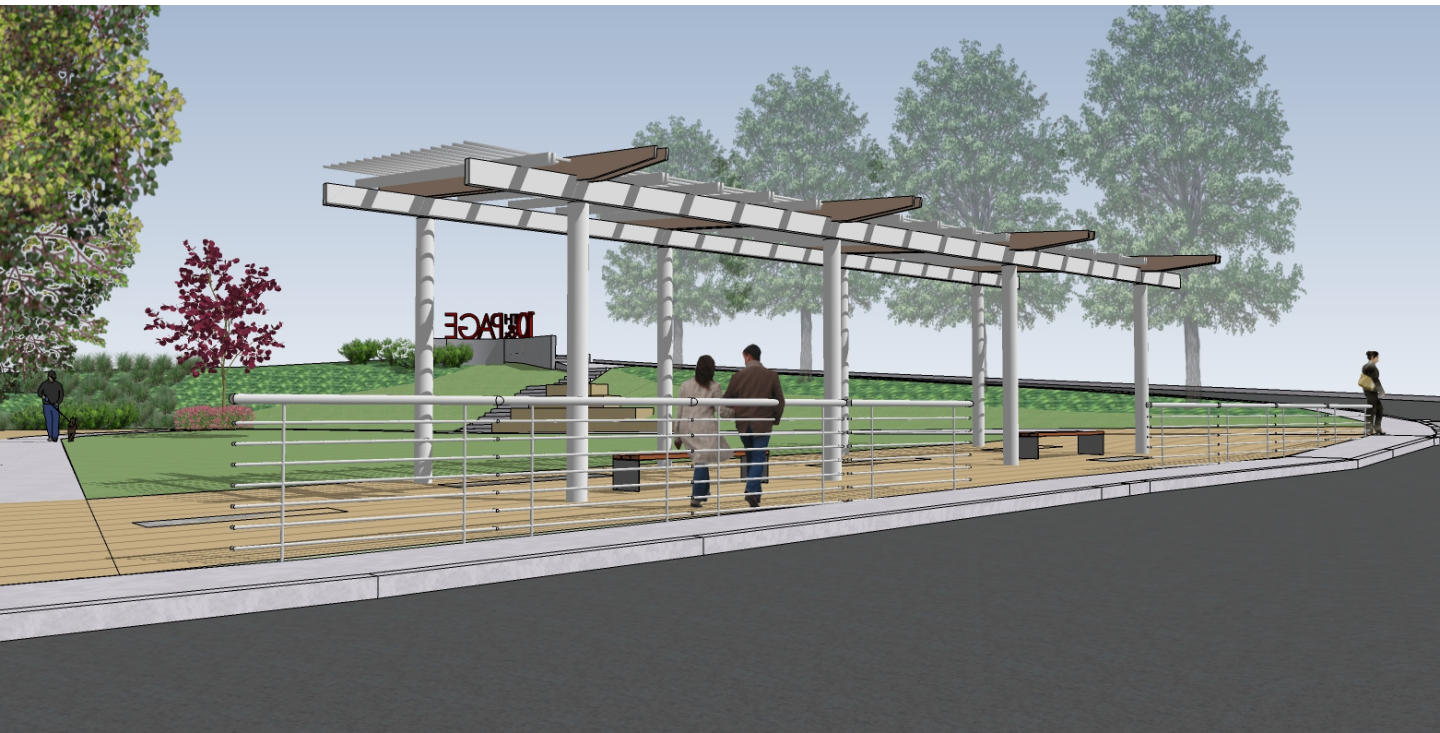


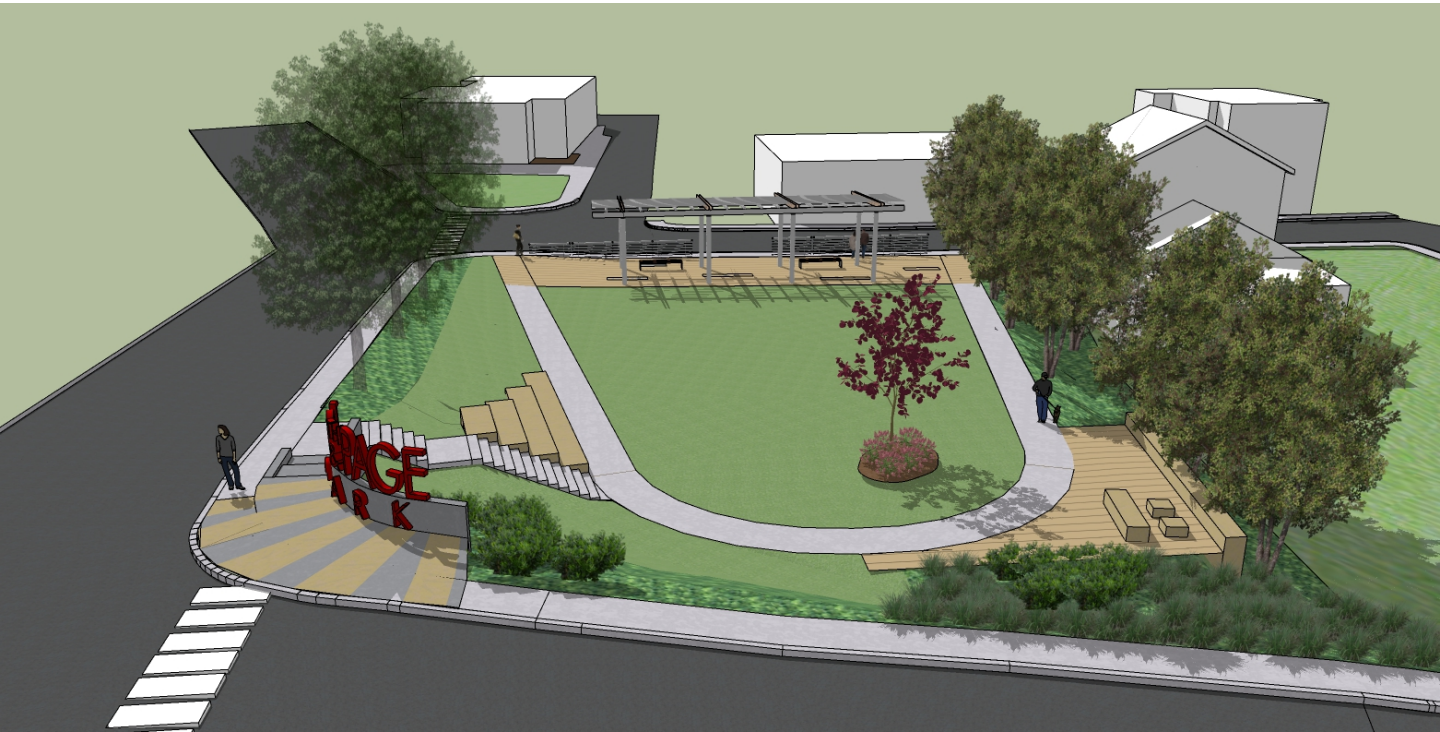
PLAN OPTION B

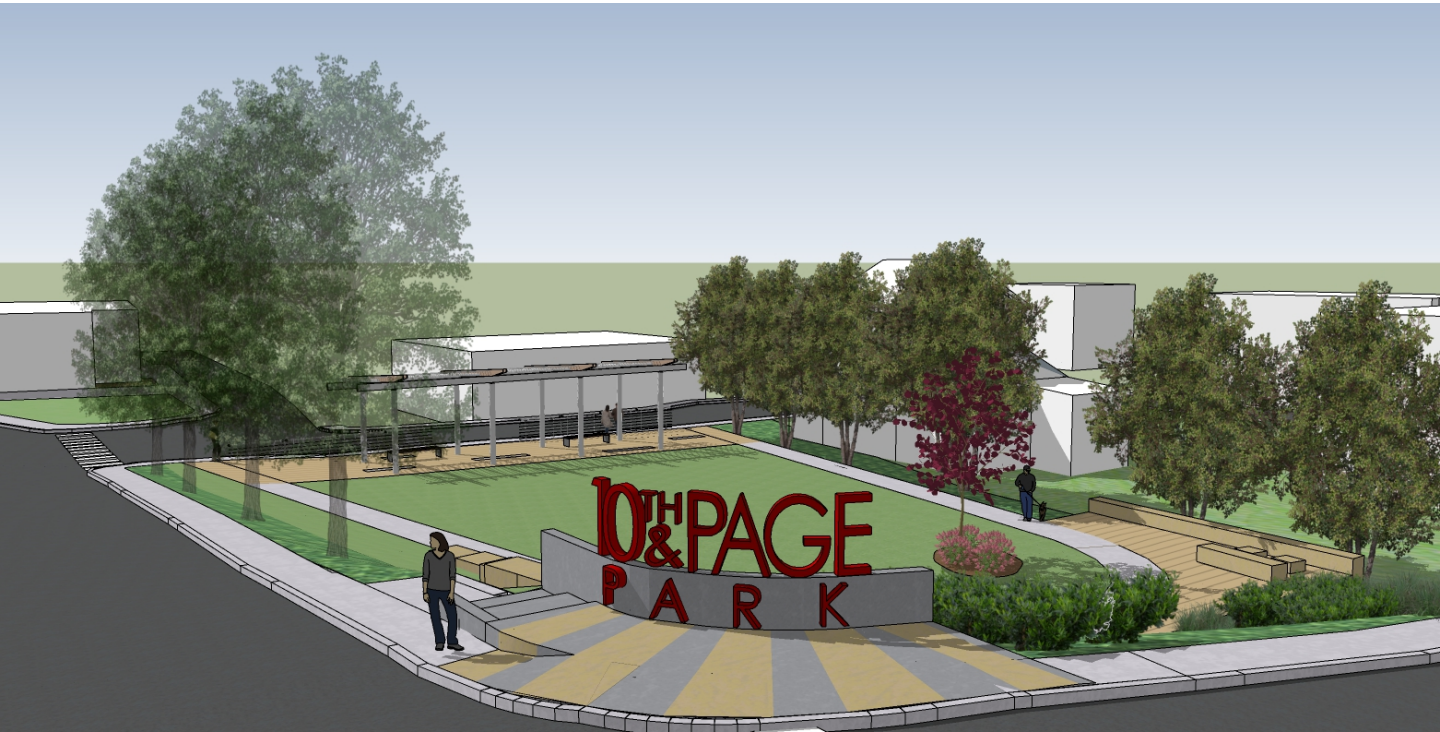


PRELIMINARY 3D VIEW OF OPTION B

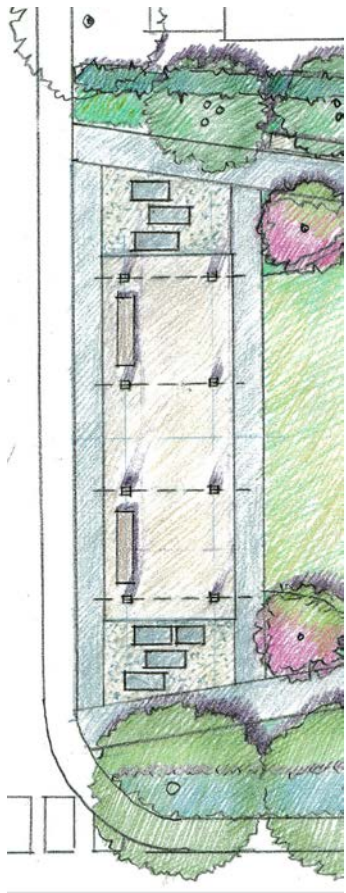
10TH & PAGE NEIGHBORHOOD PARK | NEIGHBORHOOD MEETING | June 6, 2018







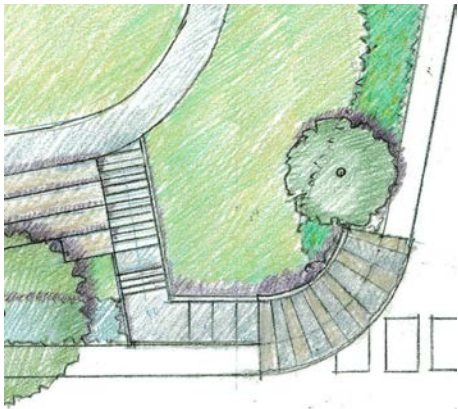
PRELIMINARY 3D VIEW OF OPTION B



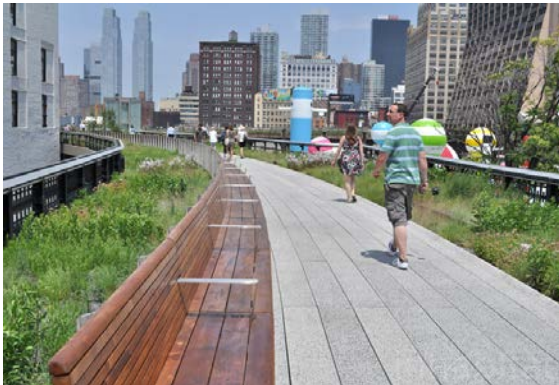
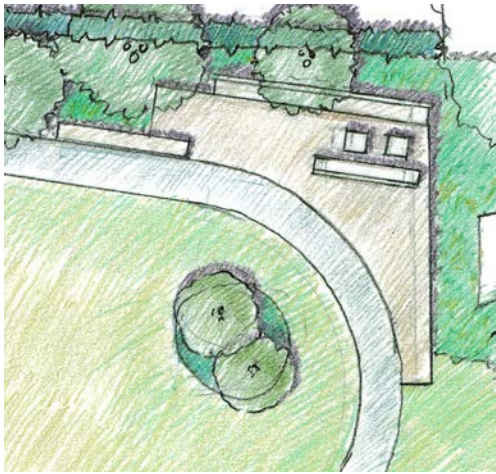
PLAN OPTION B: COMMUNITY EVENTS



SITE DETAIL OPTIONS: PERGOLA



PLAN OPTION B



PLAN OPTION B

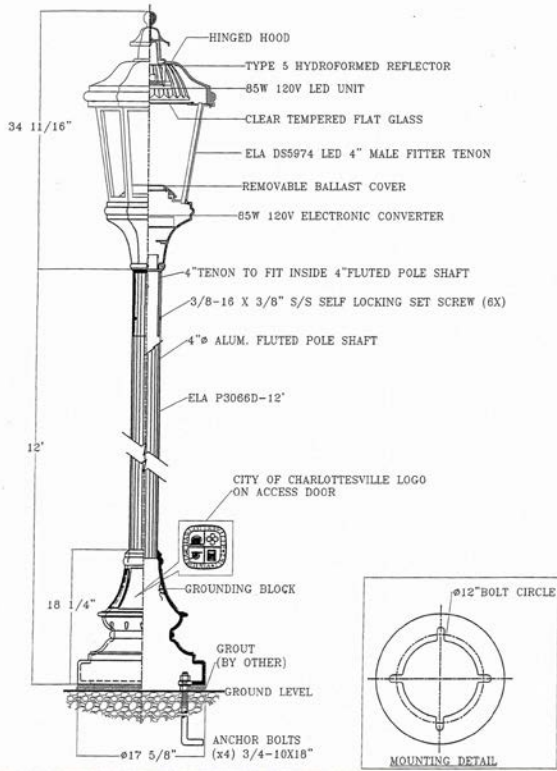


SITE DETAILS: PAVING PATTERNS





SITE DETAIL OPTIONS: LIGHTING



CHARLOTTESVILLE STANDARD SIM TO 10TH & PAGE



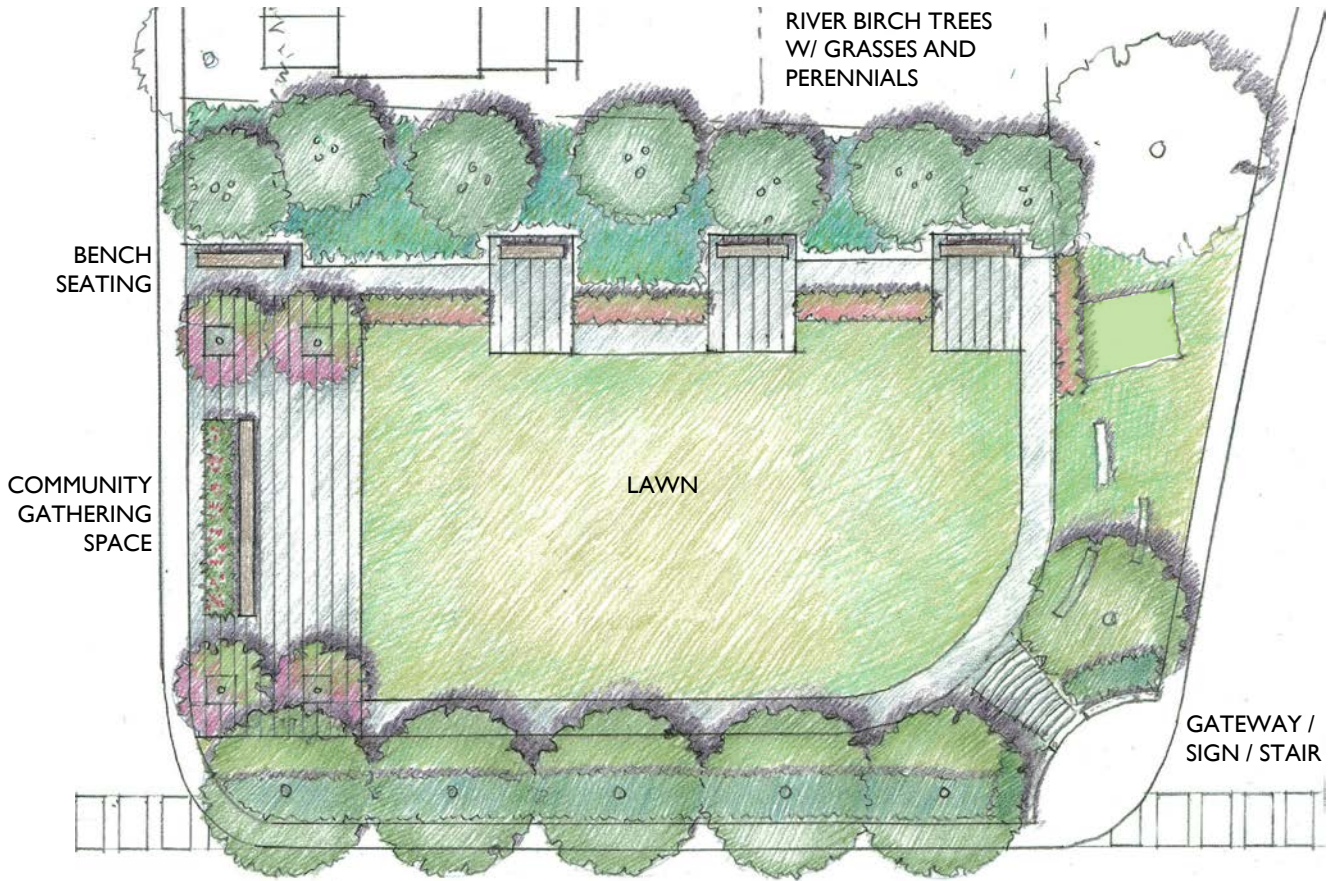
ALL FIXTURES TO HAVE "CUTOFF" LIGHT SOURCE TO REDUCE GLARE



PERGOLA MAY HAVE INTEGRAL DOWNLIGHTS

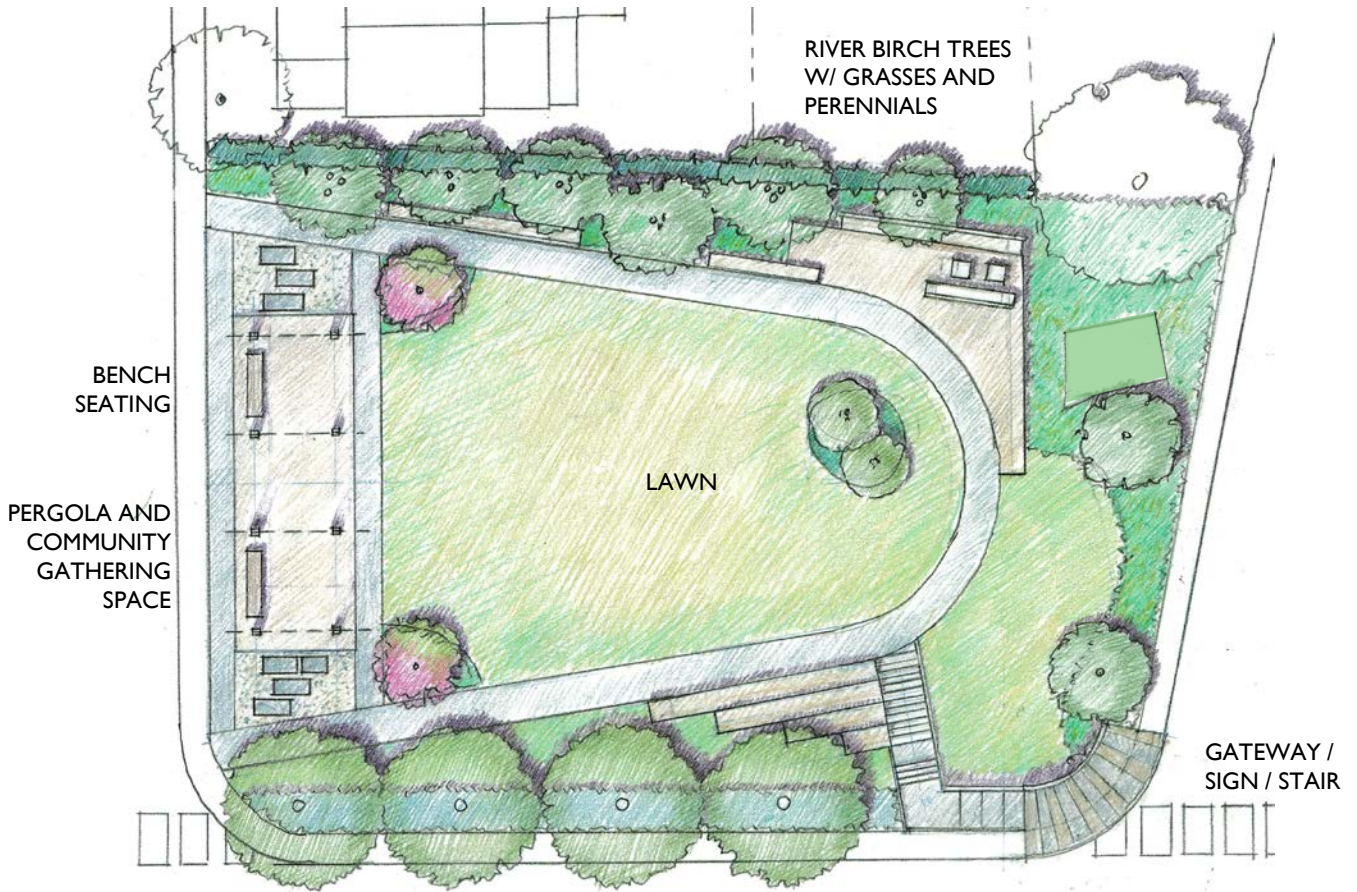


SITE DETAIL OPTIONS: LIGHTING



PLAN OPTION A





PLAN OPTION B

