

CITY OF CHARLOTTESVILLE  
"A World Class City"

Department of Neighborhood Development Services

City Hall Post Office Box 911  
Charlottesville, Virginia 22902  
Telephone 434-970-3182  
Fax 434-970-3359  
www.charlottesville.org



September 17, 2008

Minor Family Hotels  
199 Freemont Street 12<sup>th</sup> Floor  
San Francisco, CA 94105

**Certificate of Appropriateness Application**

BAR 08-08-01

201 East Water Street  
TM 28 P 31

Minor Family Hotels, Applicant  
Canopy modification

Dear Sir or Madam,

The above referenced project was discussed before a meeting of the City of Charlottesville Board of Architectural Review (BAR) on September 16, 2008.

The BAR moved to approve lowering the canopy and the general size of the amended canopy with the stipulation that further detailing on the canopy and lighting associated with it be resubmitted for staff review and approval. The motion was then modified to request that the applicant meet with staff and up to 2 members of the BAR to discuss the details of the entire building as well as the details of the canopy. They gave the flexibility for the details to come back to staff to be circulated among the Board. Motion carried 6-0.

The BAR noted it would be beneficial if the canopy was made more consistent with the language of the existing building, specifically: the little lit medallions not found anywhere else on the building; the glass edge; the dimples on the edge; and the thickness of the edge that is greater than previously approved, and not supported by other detailing on the building.

Please contact me to set up the meeting with BAR members.

If you have any questions, please contact me at 434-970-3130 or [scala@charlottesville.org](mailto:scala@charlottesville.org).

Sincerely yours,

Mary Joy Scala  
Preservation and Design Planner

cc:

Lee Danielson (email)

Neil Bhatt (email)

Neil,

Here is that lighting fixture for the canopy. We might need to find a better resolution sheet from Randy is need be.

Thanks,

TYLER CRAGLE

nbg ARCHITECTURE

GROVE PARK SQUARE

11537 B NUCKOLS ROAD

GLEN ALLEN VA 23059

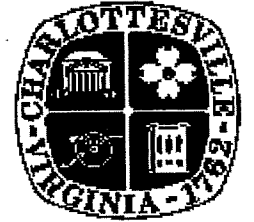
PH: (804) 273-9811 EXT.117

FAX: (804) 273-9843

This communication is confidential and intended only for the recipient (s). Any other use, dissemination, copying, or disclosure of this communication is strictly prohibited. If you have received this communication in error, please notify us and destroy it immediately. nbj Architecture, LLC. is not responsible for any undetectable alteration, transmission error, conversion, media degradation, software error, or interference with this transmission.

nbg Architecture 11537 B Nuckols Road, Glen Allen, VA 23059

**CITY OF CHARLOTTESVILLE  
BOARD OF ARCHITECTURAL REVIEW  
STAFF REPORT  
September 16, 2008**



**Certificate of Appropriateness  
BAR 08-08-01  
201 E. Water Street  
TM 28 P 31  
Minor Family Hotels, Applicant  
Canopy modification**

**Background**

This property is located within the Downtown Architectural Design Control District.

January 20, 2004 - The BAR (#04-01-02) unanimously (7-0) approved the request for demolition of 108 2<sup>nd</sup> Street SW. The BAR also unanimously (7-0) approved the request for demolition of 200 E. Main Street (including the rear addition) with the stipulation that the black granite façade will be preserved to a depth of 12 feet the full width (53 feet) of building. This motion was amended unanimously (7-0) to allow demolition of the gray square medallion.

The BAR also accepted the applicant's request for deferral of the application for new construction.

February 17, 2004 - The BAR (#04-01-02) unanimously (6-0) approved the application for new construction as received, subject to Board of Zoning Appeal approval of the penthouse variance.

A one-year extension of the COA was granted administratively on February 10, 2005. The applicant applied for a demolition permit but it was not issued. The property was sold and the new owner (Kuttner) obtained a demolition permit for the interior.

November 28, 2006 - The BAR had a preliminary discussion on sketch proposals for Kuttner's new building. The property was then sold back to the original applicant.

February 20, 2007 - The BAR (#07-02-01) re-approved 8-0 demolition except black granite; may remove marble center piece over door. The BAR voted (8-0) to approve proposed new Land mark Hotel general massing and architectural design as submitted, with the condition that the applicant come back to the BAR with further detailing and materials.

February 19, 2008 - The architect for the hotel changed from Hornberger and Worstell to NBJ Architecture in Richmond, VA. The BAR (#08-02-01) approved (6-0) their application for the details and materials with the request that the applicant return with additional information regarding the structure and appearance of the tent on the terrace on the east end of the building; the brick and stone cladding on the west wall of the old building [200 E. Main]; and the canopies if they change.

May 20, 2008 - The BAR (08-05-04) approved (8-0) the application for a mechanical equipment screen as submitted, keeping the alignment of the top of screen with the brick on the building.

August 19, 2008 - The BAR failed to approve a motion (4-4) to approve the concept of lowering canopy to a more functional height with all details of lighting and where the canopy meets the building to come back for approval. A motion passed (8-0) to defer until September meeting.



## Application

The applicant is requesting approval to redesign the Water Street canopy. Since the August BAR meeting the canopy has been redesigned with a transparent covering (1/2" laminated glazing panel system), but at the same lowered height. It is attached to the building with two main steel supports over the entrance, and two steel support ties. Lighting consists of two wall sconces, internally lit with florescent lamps; two recessed metal halide downlights at the entrance; and 20 metal halide downlights in the canopy.

The canopy extends 26 feet from the building; and is 40'-2" long.

## Criteria, Standards and Guidelines

### Review Criteria Generally

*Sec. 34-284(b) of the City Code states that,*

*In considering a particular application the BAR shall approve the application unless it finds:*

- (1) That the proposal does not meet specific standards set forth within this division or applicable provisions of the Design Guidelines established by the board pursuant to Sec. 34-288(6); and*
- (2) The proposal is incompatible with the historic, cultural or architectural character of the district in which the property is located or the protected property that is the subject of the application.*

### Pertinent Standards for Review of Construction and Alterations include:

- (1) Whether the material, texture, color, height, scale, mass and placement of the proposed addition, modification or construction are visually and architecturally compatible with the site and the applicable design control district;*
- (2) The harmony of the proposed change in terms of overall proportion and the size and placement of entrances, windows, awnings, exterior stairs and signs;*
- (3) The Secretary of the Interior Standards for Rehabilitation set forth within the Code of Federal Regulations (36 C.F.R. §67.7(b)), as may be relevant;*
- (4) The effect of the proposed change on the historic district neighborhood;*
- (5) The impact of the proposed change on other protected features on the property, such as gardens, landscaping, fences, walls and walks;*
- (6) Whether the proposed method of construction, renovation or restoration could have an adverse impact on the structure or site, or adjacent buildings or structures;*
- (8) Any applicable provisions of the City's Design Guidelines.*

### Pertinent Design Guidelines for New Construction and Additions include:

#### **P. 3.4 Setback**

- 1. Construct new commercial buildings with a minimal or no setback in order to reinforce the traditional street wall.*
- 2. Use a minimal setback if the desire is to create a strong street wall or a setback consistent with the surrounding area.*

### Pertinent Design Guidelines for Signs, Awnings, Vending and Cafes

#### **P. 5.6 Awnings, Marquees & Canopies**

##### *1. Types*

*c. Marquees and canopies fabricated from rigid materials are appropriate on some commercial buildings, however, they must fit the storefront design and not obscure important elements such as transoms or decorative glass.*

*e. Backlit awnings or canopies used as illuminated signs are inappropriate.*

##### *2. Placement*

*a. Place awnings carefully within the storefront, porch, door, or window openings so they do not obscure elements of damage materials.*

*b. Choose designs that do not interfere with existing signs or distinctive architectural features of the building, or with street trees or other elements along the street.*

*c. Choose an awning shape that fits the opening in which it is installed.*

*d. Make sure the bottom of the awning valance is at least 7 feet high, or 10 feet if it contains a sign.*

##### *3. Color and Materials*

*a. Coordinate colors with the overall building color scheme. Solid colors, wide stripes, and narrow stripes may be appropriate, but not overly bright or complex patterns.*

*b. Aluminum, vinyl plastic, or overly ornate fabric awnings are generally inappropriate for any buildings within the historic districts.*

*c. Contemporary marquees or canopies may be constructed of combinations of metal, wood, and glass; some types of plastic may be appropriate.*

## Discussion and Recommendations

The approved previous canopy design is included in the staff report. The approved design had two canopies: the upper canopy was a transparent glass canopy with zinc fins, and a painted steel and aluminum sub-structure. The lower canopy was limestone positioned just over the door for functionality.

The proposed design is now lower (to protect patrons from the weather) transparent, and lighted. The dimensions of the canopy are similar to the approved design. The design of the structural supports and the transparency are similar to the approved design. The lowered height and lighting are the main differences from the approved version.

The applicant has said that the internally lit sconce lighting will meet the dark sky lumens requirements. The downlights are much preferred to the previous submittal that had internally lit canopy lighting. The applicant has submitted a photometric plan. For comparison purposes, the Illuminating Engineering Society of North America (IESNA) has established that an illumination level of 20 fc is all that is needed for service station pump islands with dark surroundings, and 30 fc for pump islands with bright surroundings. Therefore, the range under the canopy (max. 34.4) is within reason. However, per the zoning ordinance, the maximum footcandle level permitted to spill onto public rights of way is 1/2 footcandle. That amount is exceeded in front of the canopy, and should be adjusted.

## Suggested Motion

NC Having considered the standards set forth within the City Code, including City Design Guidelines for Rehabilitation, I move to find that the proposed request for canopy modifications satisfies the BAR's criteria and is compatible with this property and other properties in this district, and that the BAR approves the application as submitted (with the following modifications...).

Scala, Mary Joy

From: Randy Burkett [Randy@rbldi.com]  
Sent: Sunday, September 14, 2008 12:20 PM  
To: Scala, Mary Joy; NEIL BHATT  
Subject: RE: The Landmark Hotel-Charlottesville, VA Light Cut Sheet

Mary Joy and Neil:

The architectural sconce we have preliminarily selected is the Mentor Series from Winona Lighting. The model we have used in our preliminary design work includes a single F32T8/3K lamp (they also catalog 2-lamp versions). This has an initial 2850 lumens when operated on a standard electronic ballast. We will be specifying an electronic low power factor ballast which reduces the maximum lumen output to approximately 2300 lumens.

Let me know if you need anything else.

Thanks,

Randy Burkett

-----Original Message-----  
From: Scala, Mary Joy [mailto:scala@charlottesville.org]  
Sent: Friday, September 12, 2008 6:59 AM  
To: Randy Burkett; NEIL BHATT  
Subject: RE: The Landmark Hotel-Charlottesville, VA Light Cut Sheet

Thank you

Mary Joy Scala, Preservation and Design Planner City of Charlottesville Department of Neighborhood Development  
Services City Hall - 610 East Market Street P.O. Box 911 Charlottesville, VA 22902  
Ph 434.970.3130 FAX 434.970.3359  
scala@charlottesville.org

-----Original Message-----  
From: Randy Burkett [mailto:Randy@rbldi.com]  
Sent: Friday, September 12, 2008 4:26 AM  
To: NEIL BHATT; Scala, Mary Joy  
Cc: 'Randy Burkett'  
Subject: RE: The Landmark Hotel-Charlottesville, VA Light Cut Sheet

Neil

I will be returning to my office on Monday and will get back to you then. We can meet the City's 3000 lumen limit with this sconce.

Randy

Randy

-----Original Message-----  
From: NEIL BHATT <nbhatt@nbjarch.com>  
Sent: Thursday, September 11, 2008 5:36 PM  
To: 'Scala, Mary Joy' <scala@charlottesville.org>  
Cc: 'Randy Burkett' <Randy@rbldi.com>  
Subject: RE: The Landmark Hotel-Charlottesville, VA Light Cut Sheet

Mary Joy: I am forwarding this to our Lighting consultant.

Randy: Please see the message from Mary Joy Scala of BAR. Please provide the information she is seeking ASAP.

Thanks for your help.

Neil

From: Scala, Mary Joy [mailto:scala@charlottesville.org]  
Sent: Thursday, September 11, 2008 3:45 PM  
To: NEIL BHATT  
Subject: RE: The Landmark Hotel-Charlottesville, VA Light Cut Sheet

Can you find out the lumens from the sconces? Our ordinance allows 3000 lumens without shielding, equivalent to 35 w fluorescent lamps.

Thank you

Mary Joy Scala, Preservation and Design Planner

City of Charlottesville

Department of Neighborhood Development Services

City Hall - 610 East Market Street

P.O. Box 911

Charlottesville, VA 22902

Ph 434.970.3130 FAX 434.970.3359

scala@charlottesville.org

From: NEIL BHATT [mailto:nbhatt@nbjarch.com]  
Sent: Monday, September 08, 2008 6:58 PM  
To: Scala, Mary Joy  
Subject: FW: The Landmark Hotel-Charlottesville, VA Light Cut Sheet

Mary Joy: In the submission we forwarded today, a canopy light is called out and a technical sheet is included. However I thought this picture will be helpful to visualize the look of fixture. Let me know if I can provide any other info. Neil

From: TYLER CRAGLE [mailto:tcragle@nbjarch.com]  
Sent: Monday, September 08, 2008 5:15 PM  
To: 'NEIL BHATT'  
Subject: The Landmark Hotel-Charlottesville,VA Light Cut Cheet



# THE LANDMARK HOTEL

Main and Second  
Charlottesville, Virginia



BOARD OF ARCHITECTURAL REVIEW  
REVIEW MEETING

SUPPLEMENTAL MATERIAL  
September 8, 2008



**nbj** ARCHITECTURE  
A Professional Limited Company  
Grove Park Square  
11537-B Nuckols Road  
Glen Allen, VA 23059

☎ (804) 273-9811  
fax: (804) 273-9843  
URL: [www.nbjarch.com](http://www.nbjarch.com)





 PROPOSED  
CANOPY DESIGN

THE LANDMARK HOTEL

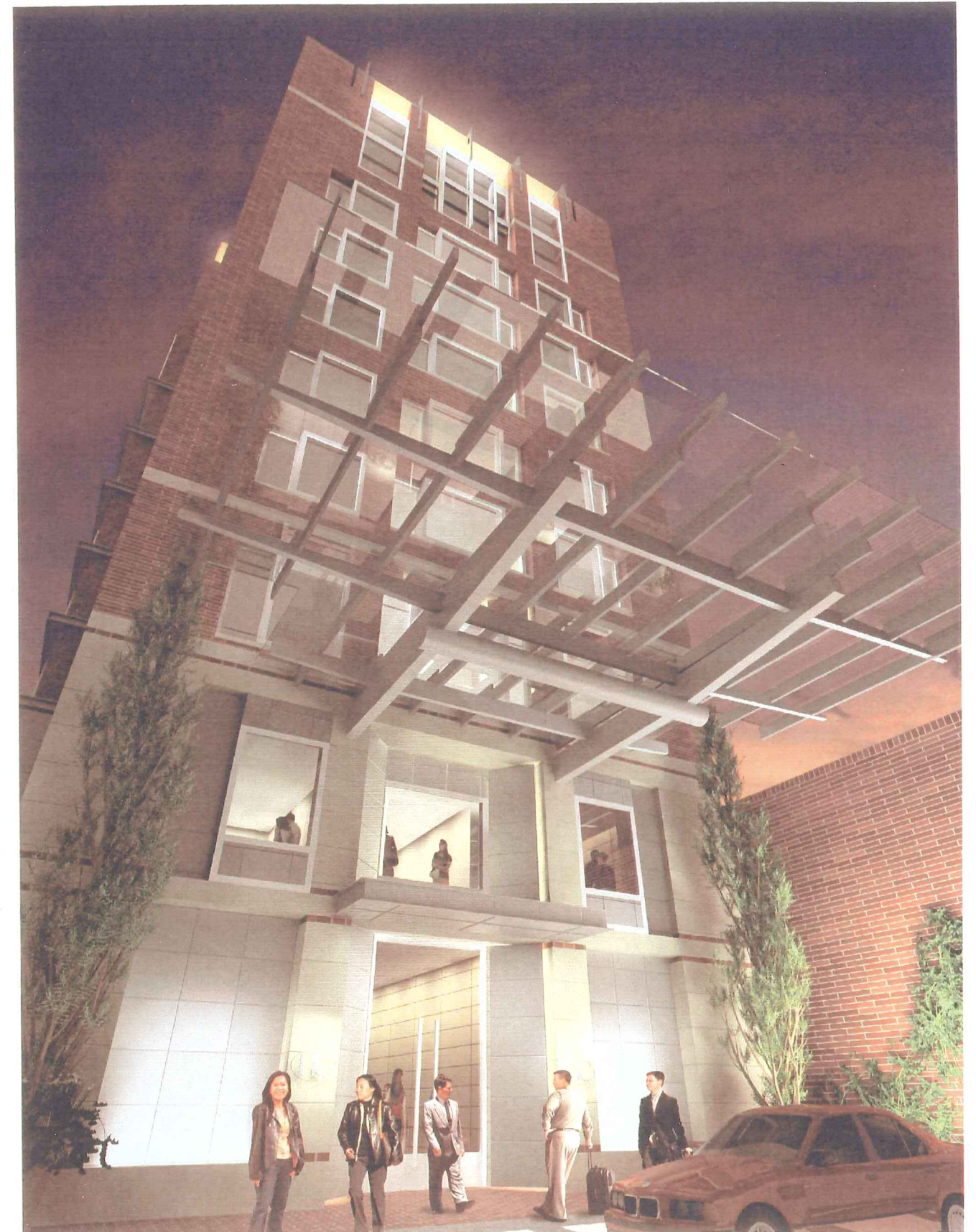




 PREVIOUSLY APPROVED  
SECOND STREET ELEVATION

THE LANDMARK HOTEL





 PREVIOUSLY APPROVED  
CANOPY DESIGN

THE LANDMARK HOTEL

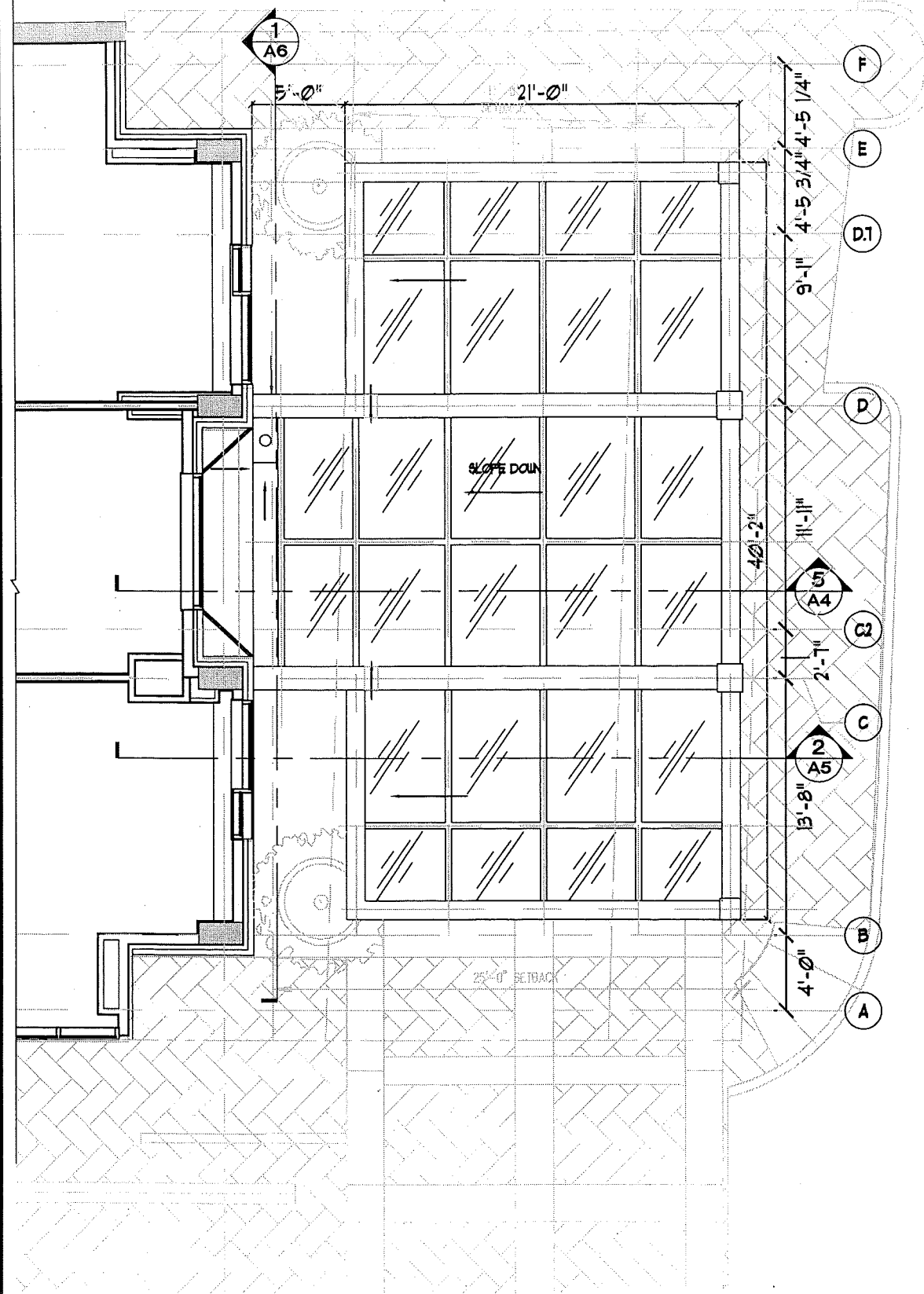




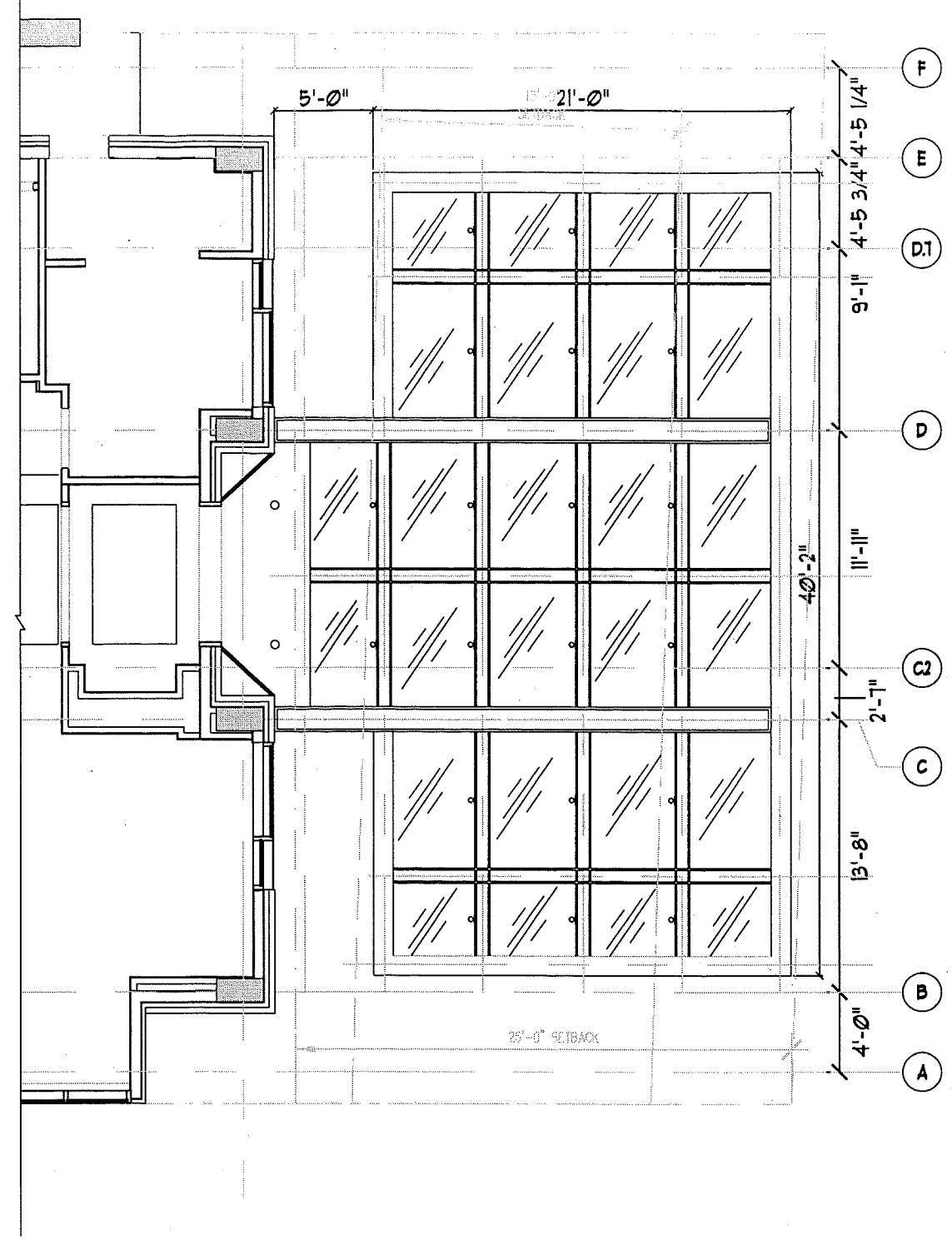
PROPOSED  
SECOND STREET ELEVATION

THE LANDMARK HOTEL





1 CANOPY ROOF PLAN



2 CANOPY REFLECTED CEILING PLAN

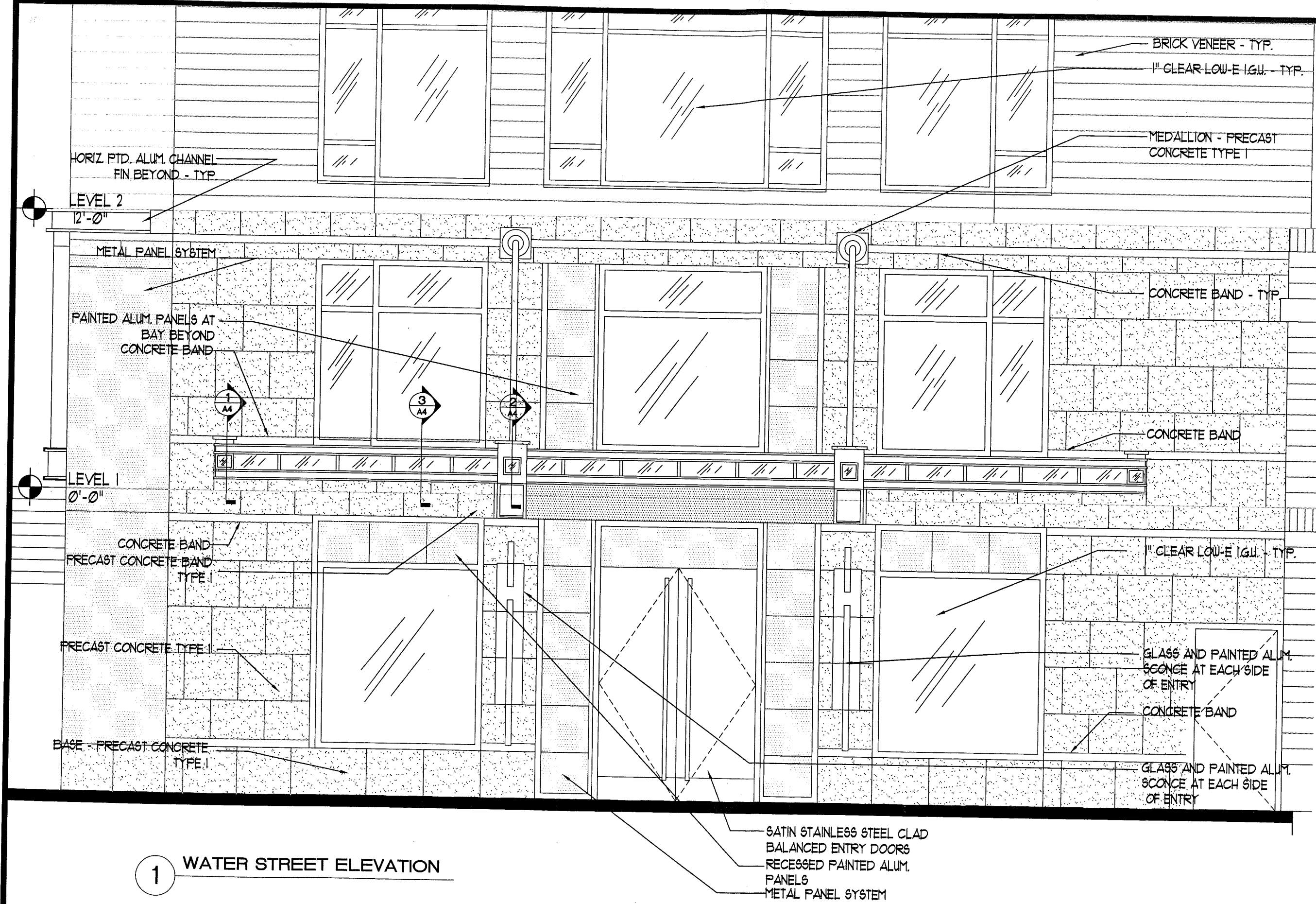
**nby** ARCHITECTURE  
 A Professional Limited Company  
 Grove Park Square  
 11537-B Nuckols Road  
 Glen Allen, Virginia 23059  
 ☎ (804) 273-9811 fax: (804) 273-9843

**THE LANDMARK HOTEL**  
 CHARLOTTESVILLE, VA

**A-1**

Date:  
 SEPT. 8, 2008





1 WATER STREET ELEVATION

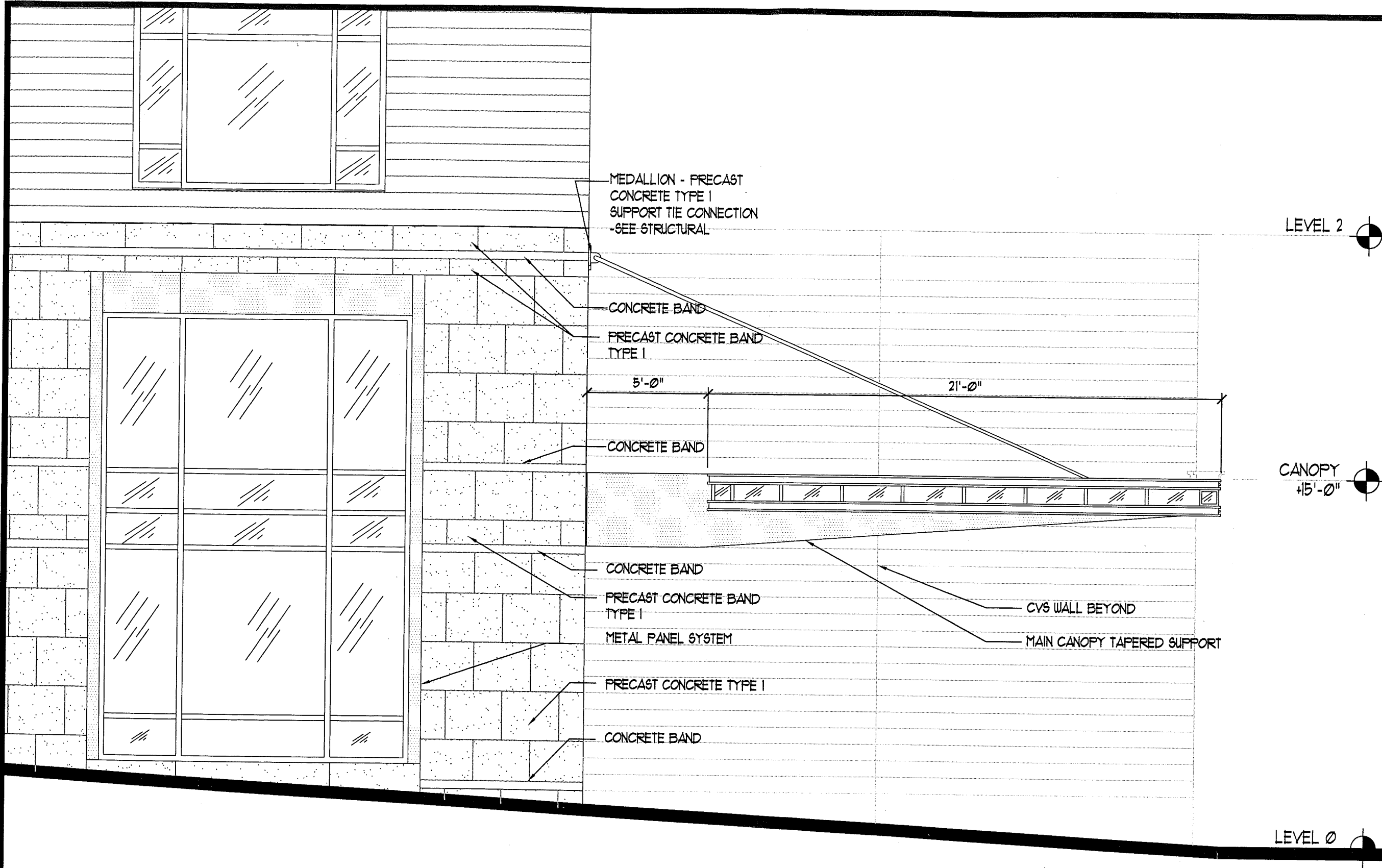
SATIN STAINLESS STEEL CLAD  
BALANCED ENTRY DOORS  
RECESSED PAINTED ALUM.  
PANELS  
METAL PANEL SYSTEM

**nbi** ARCHITECTURE  
A Professional Limited Company  
Grove Park Square  
11537-B Nuckols Road  
Glen Allen, Virginia 23059  
(804) 273-9811 fax: (804) 273-9843

THE LANDMARK HOTEL  
CHARLOTTESVILLE, VA

A-2

Date:  
SEPT. 8, 2008



1 SECOND STREET ELEVATION

**nbi** ARCHITECTURE  
A Professional Limited Company

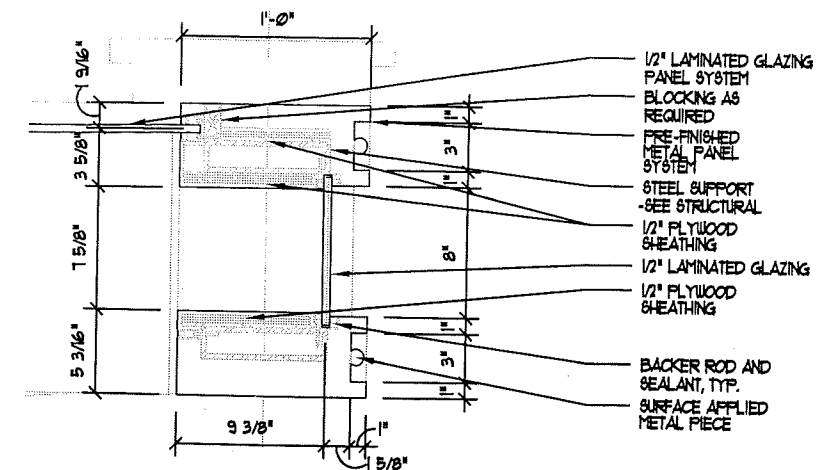
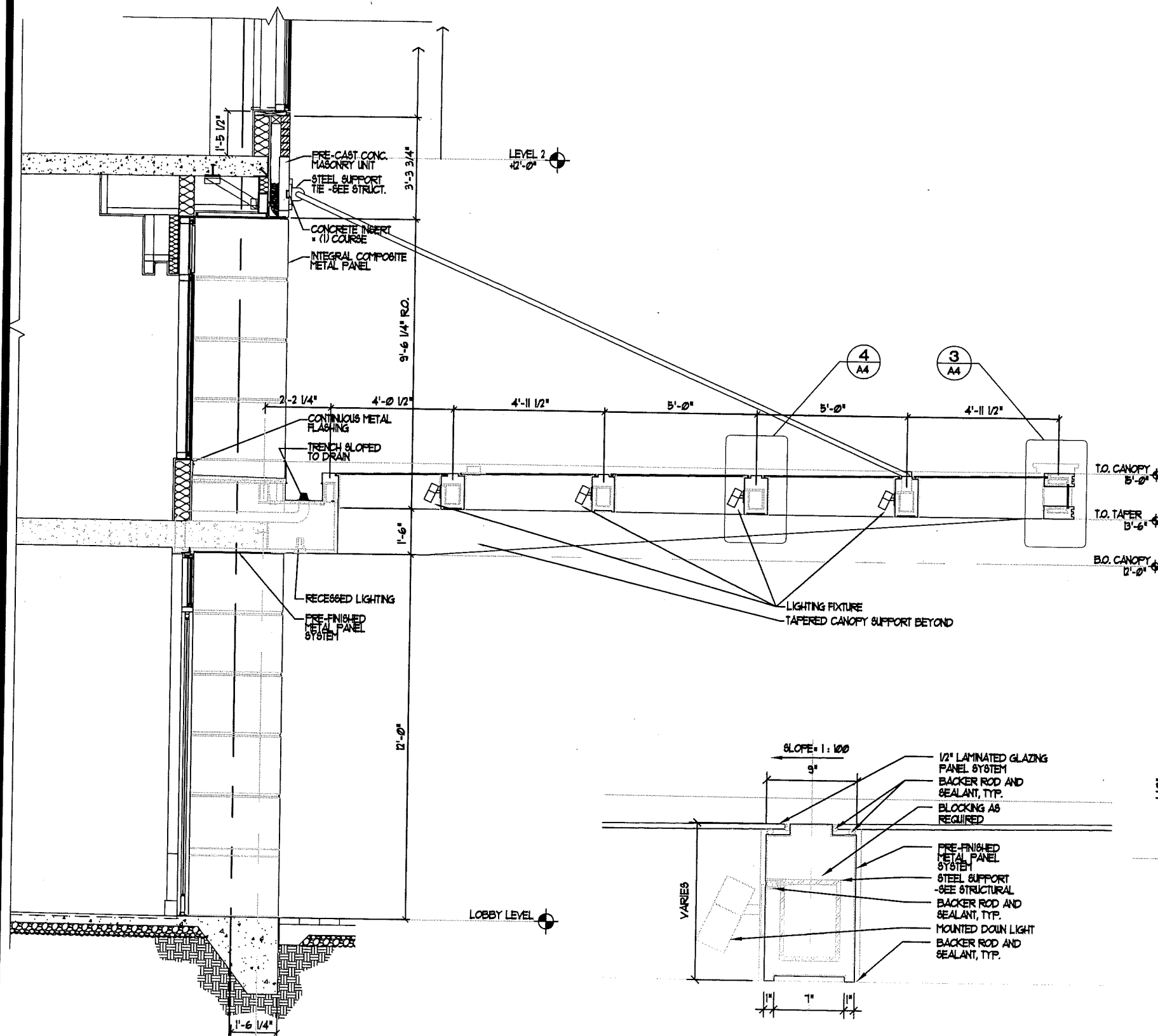
Grove Park Square  
11537-B Nuckols Road  
Glen Allen, Virginia 23059  
☎ (804) 273-9811 fax: (804) 273-9843

THE LANDMARK HOTEL

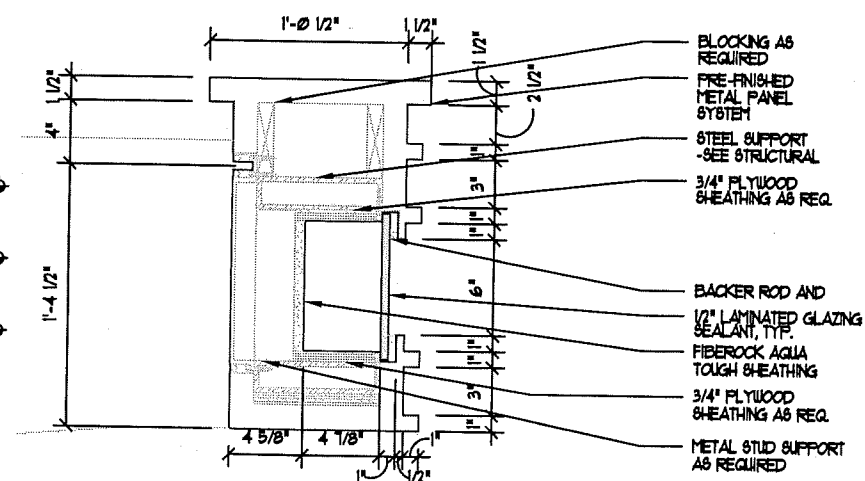
CHARLOTTESVILLE, VA

A-3

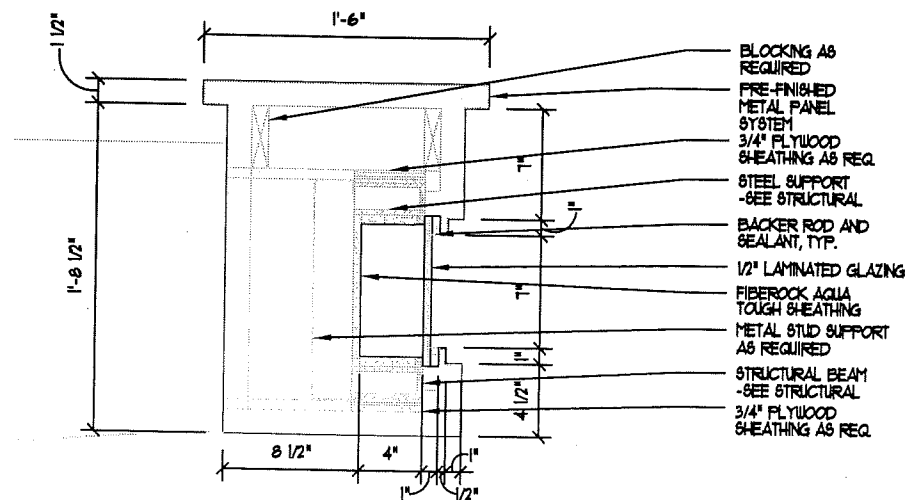
Date:  
SEPT. 8, 2008



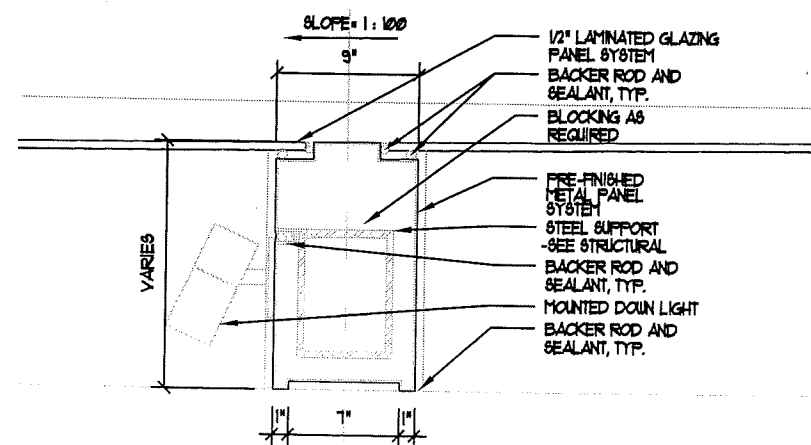
3 CANOPY SECTION THRU OUTSIDE EDGE



2 CANOPY SECTION AT FRONT CORNERS



1 CANOPY SECTION AT BEAM ENDS



4 SECTION - CENTRAL GRID

5 CANOPY SECTION

**nbi** ARCHITECTURE  
A Professional Limited Company

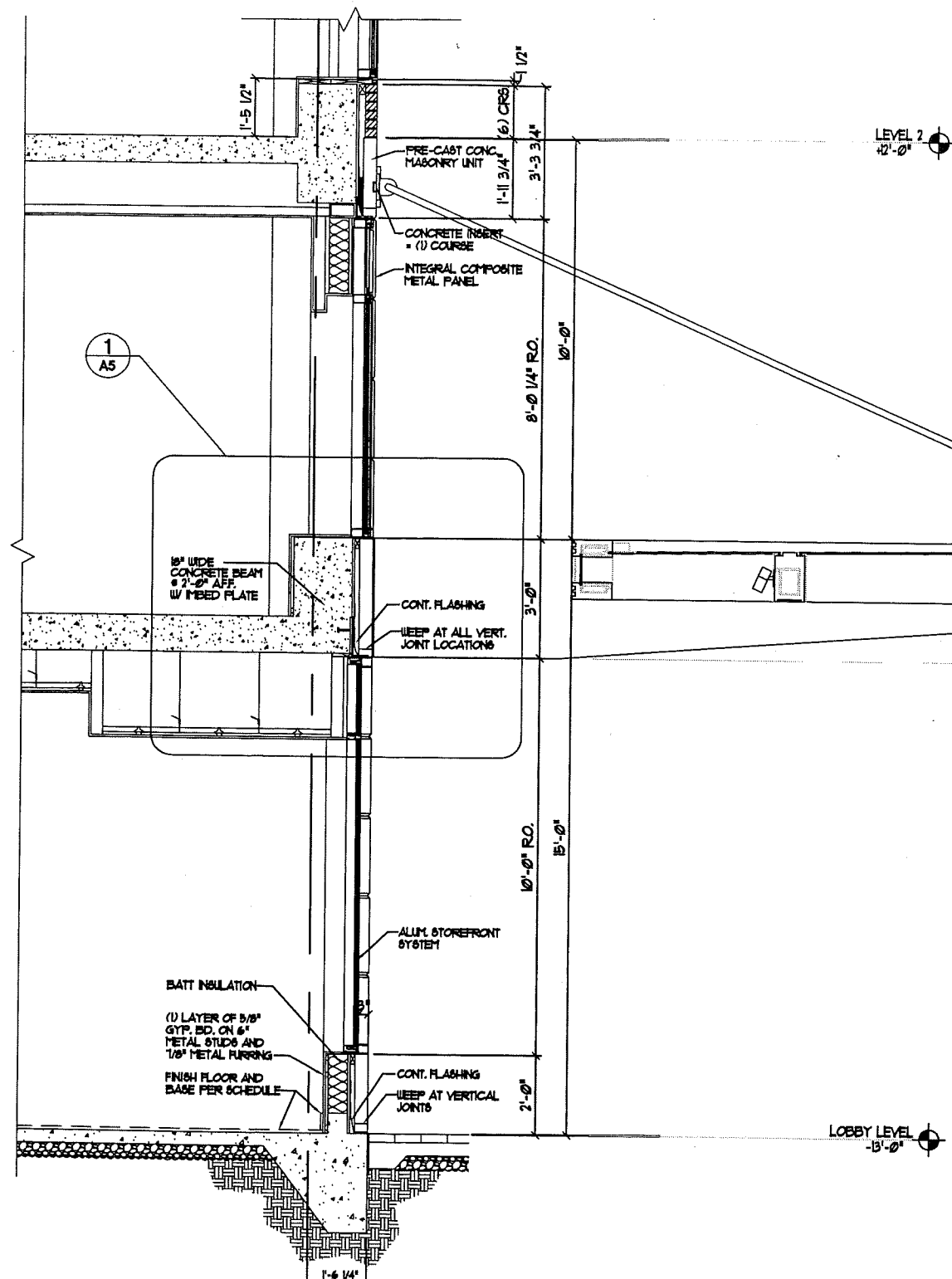
Grove Park Square  
11537-B Nuckols Road  
Glen Allen, Virginia 23059  
(804) 273-9811 fax: (804) 273-9843

**THE LANDMARK HOTEL**  
CHARLOTTESVILLE, VA

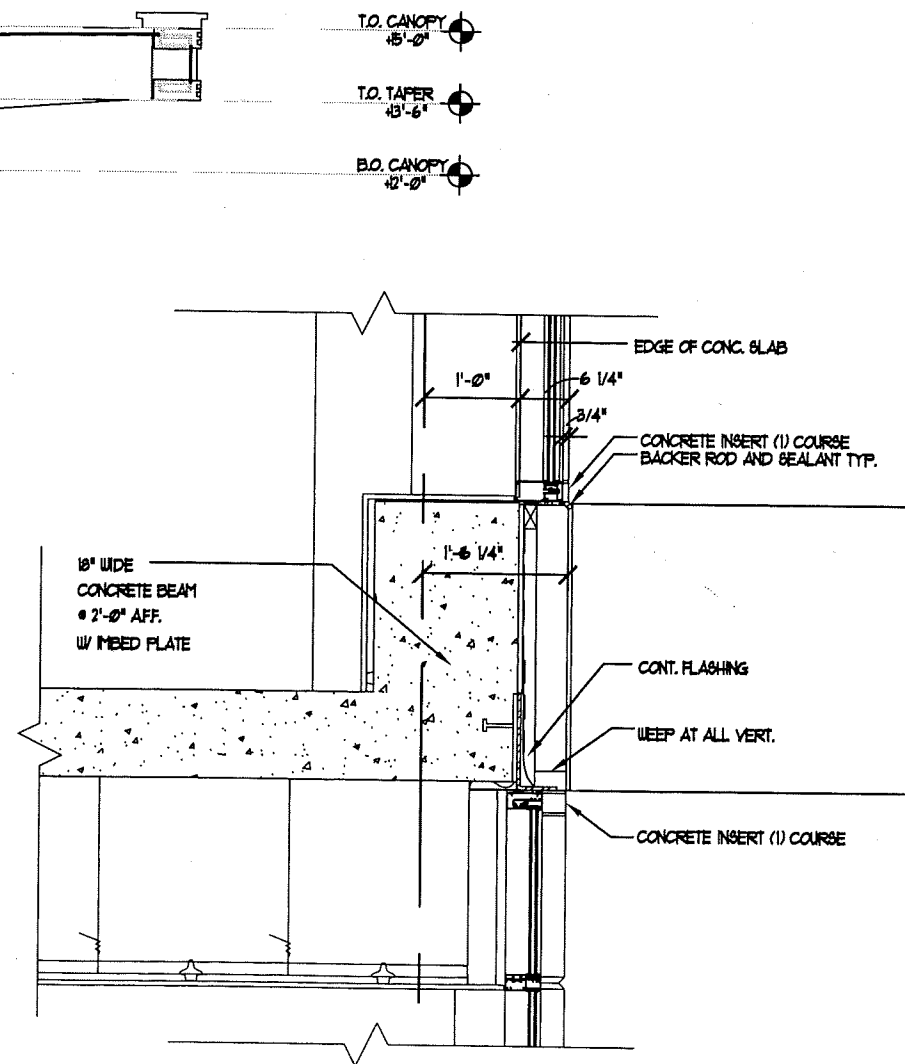
**A-4**

Date:  
SEPT. 8, 2008





2 WATER STREET FACADE SECTION



1 CANOPY/BUILDING CONNECTION

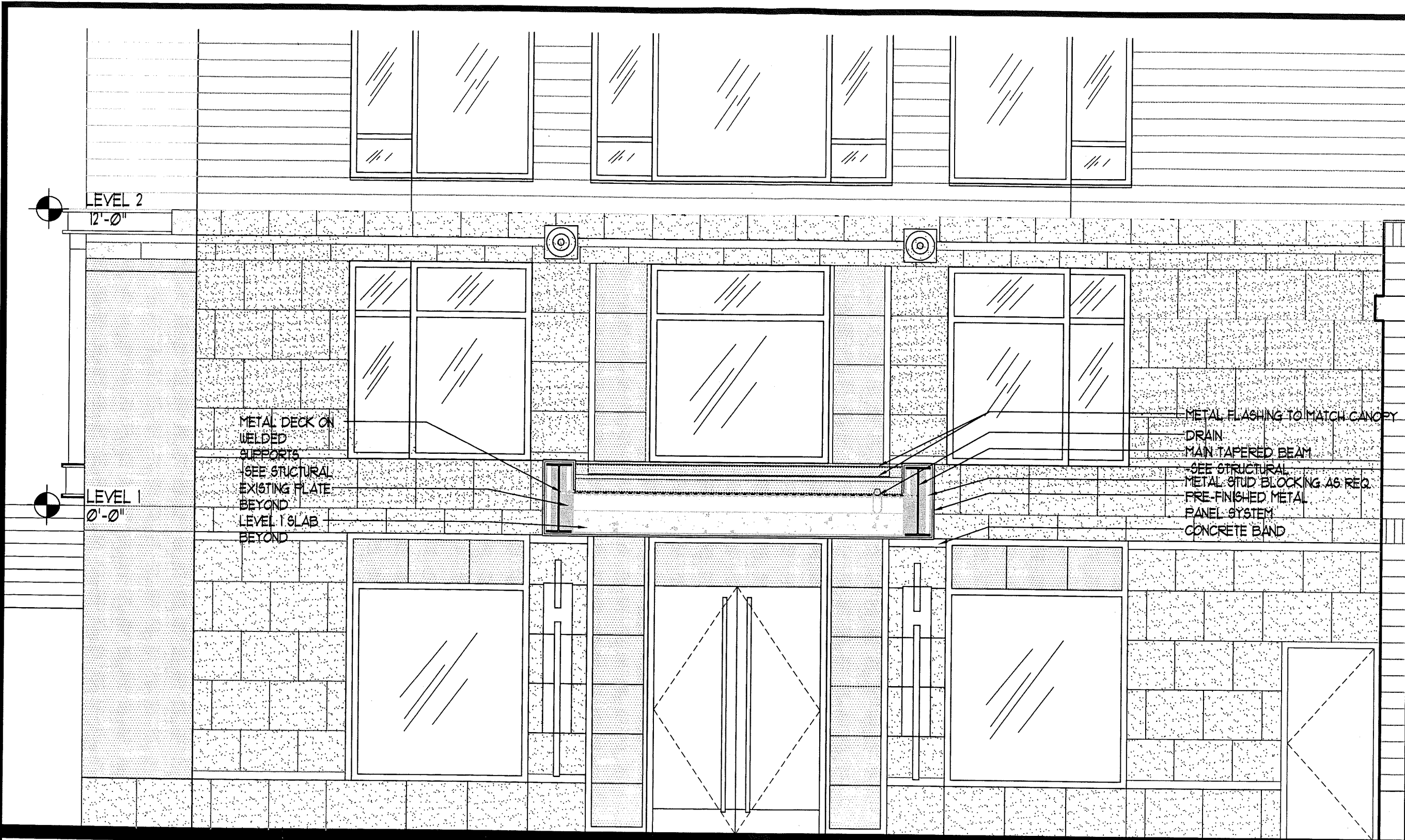
**nbi** ARCHITECTURE  
A Professional Limited Company

Grove Park Square  
11537-B Nuckols Road  
Glen Allen, Virginia 23059  
☎ (804) 273-9811 fax: (804) 273-9843

THE LANDMARK HOTEL  
CHARLOTTESVILLE, VA

A-5

Date:  
SEPT. 8, 2008



1 CANOPY/WATER STREET FACADE CONNECTION

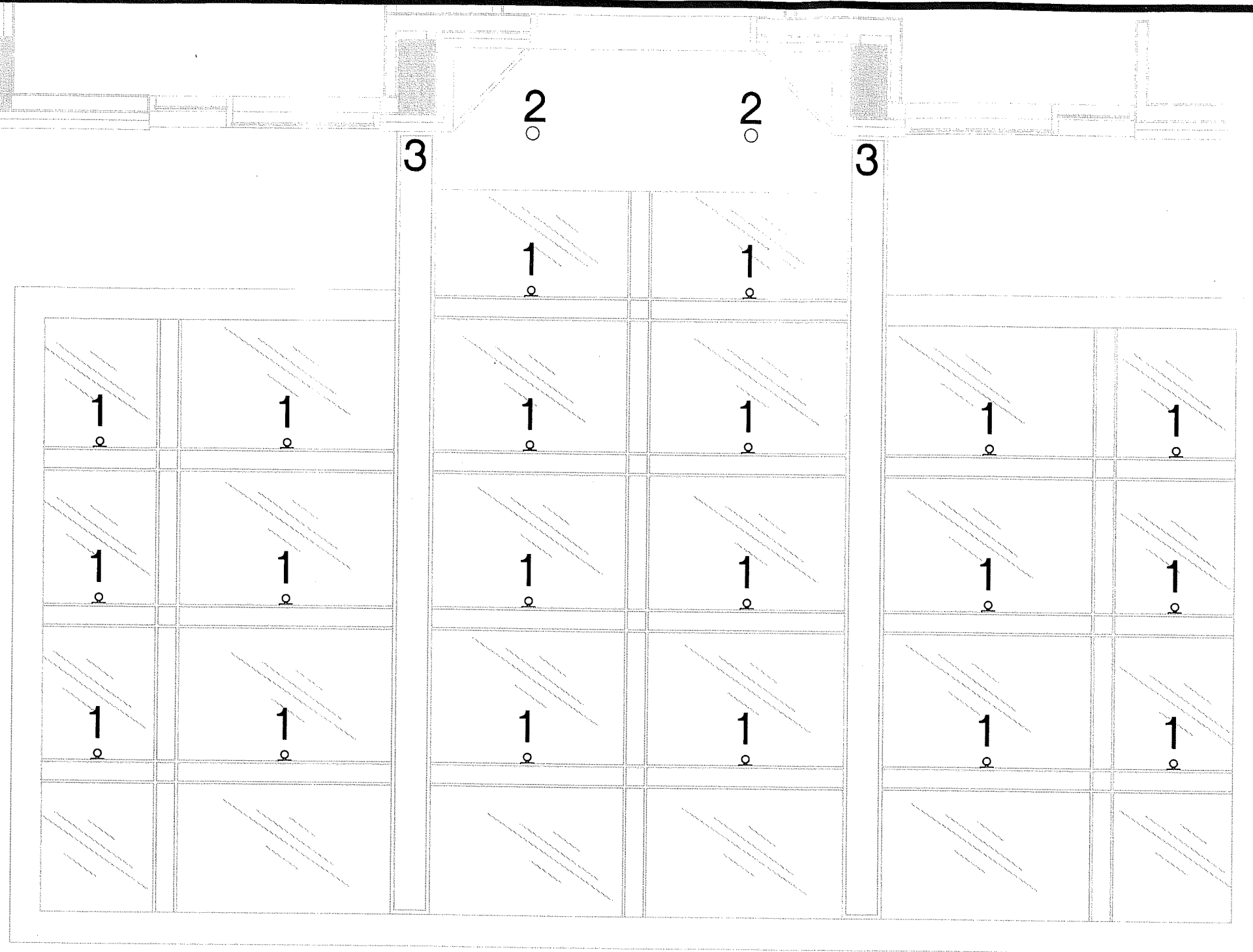
**nby** ARCHITECTURE  
A Professional Limited Company  
Grove Park Square  
11537-B Nuckols Road  
Glen Allen, Virginia 23059  
☎ (804) 273-9811 fax: (804) 273-9843

**THE LANDMARK HOTEL**  
CHARLOTTESVILLE, VA

**A-6**

Date:  
SEPT. 8, 2008

1 CANOPY REFLECTED CEILING LIGHTING PLAN



1-MOUNTED HALIDE DOWNLIGHT  
2-RECESSED DOWNLIGHT  
3-WALL SCONCE

LIGHTING

Date:  
SEPT. 8, 2008


THE LANDMARK HOTEL  
CHARLOTTESVILLE, VA

**nby** ARCHITECTURE  
A Professional Limited Company

Grove Park Square  
11537-B Nuckols Road  
Glen Allen, Virginia 23059  
☎ (804) 273-9811 fax: (804) 273-9843



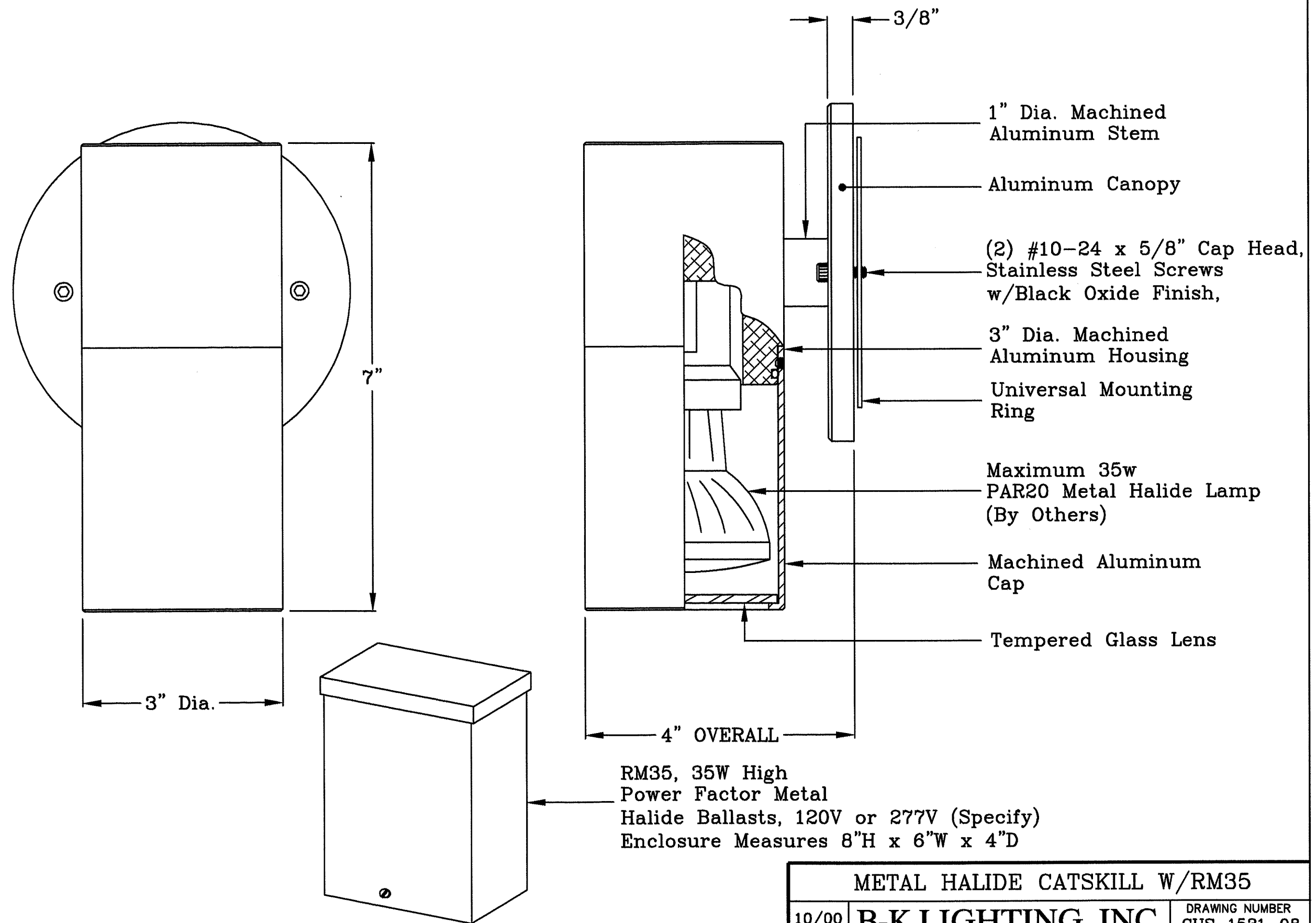
0.2	0.4	0.8	1.5	3.3	5.7	7.9	16.7	21.6	23.0	10.5	6.7	4.7	2.3	1.1	0.6	0.3	0.2	0.1
0.3	0.5	1.0	2.2	6.8	20.9	23.3	27.9	30.4	33.0	25.2	21.6	15.8	3.6	1.6	0.7	0.4	0.2	0.1
0.3	0.5	1.2	2.6	8.7	29.4	31.4	31.8	31.4	34.4	32.4	29.2	21.8	4.4	1.8	0.8	0.4	0.2	0.1
0.3	0.5	1.1	2.5	8.2	27.9	29.6	29.8	29.3	32.0	30.4	27.9	20.9	4.1	1.8	0.8	0.4	0.2	0.1
0.2	0.5	0.9	1.9	4.5	12.8	14.0	14.3	14.3	15.4	14.5	12.9	10.0	2.9	1.4	0.7	0.4	0.2	0.1
0.2	0.4	0.7	1.2	2.1	3.2	4.0	4.4	4.6	4.5	4.3	3.7	2.7	1.7	0.9	0.5	0.3	0.2	0.1
0.2	0.3	0.4	0.7	1.1	1.5	1.9	2.1	2.2	2.2	2.0	1.7	1.3	0.9	0.6	0.4	0.2	0.1	0.1

Luminaire Schedule					
Symbol	Qty	Label	Arrangement	Lumens	LLF
	20	PAR20_30_FLOOD_59	SINGLE	2300	0.500

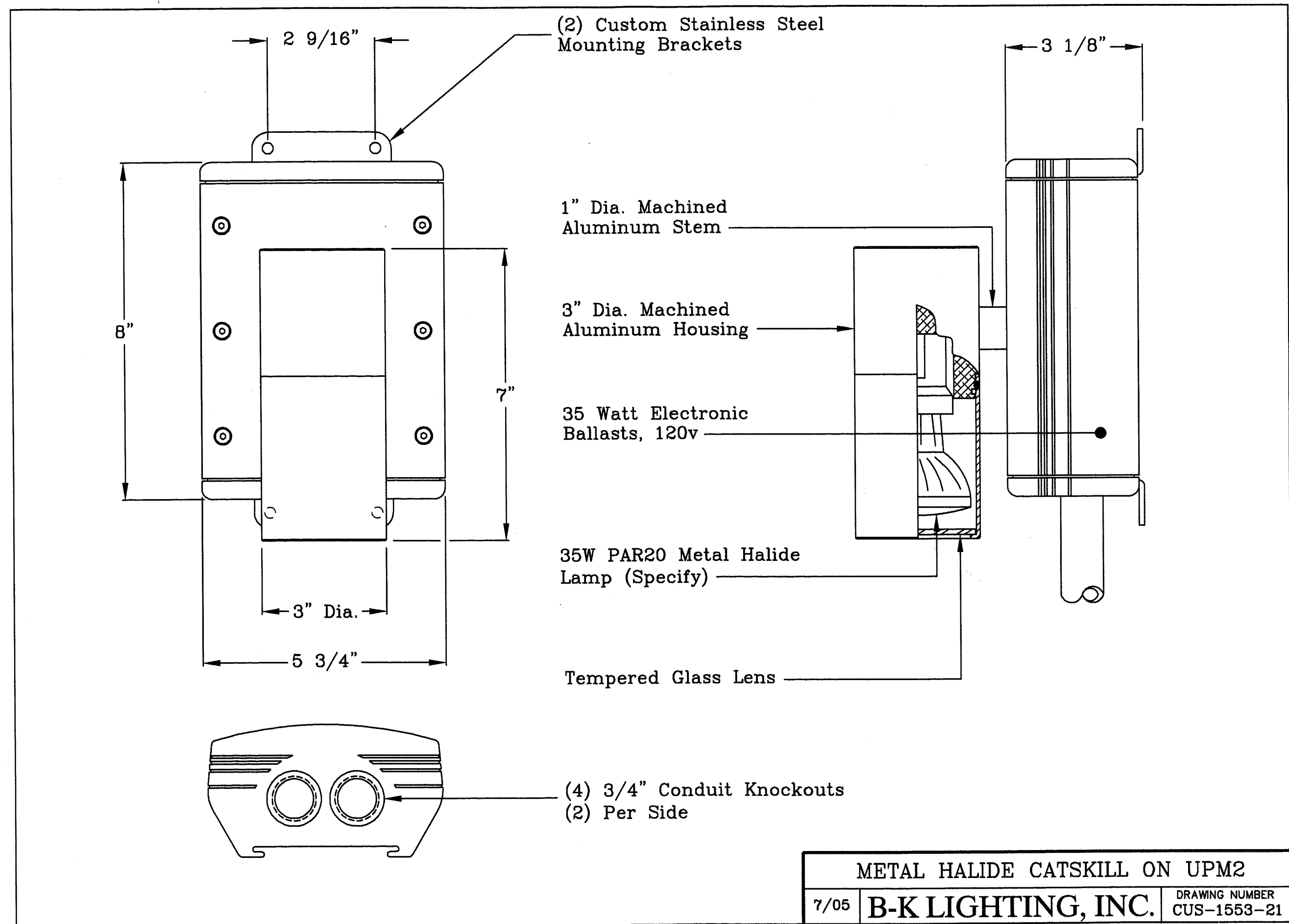
Calculation Summary							
Label	CalcType	Units	Avg	Max	Min	Avg/Min	Max/Min
ground plane_Planar_1	Illuminance	Fc	7.63	34.4	0.1	76.30	344.00

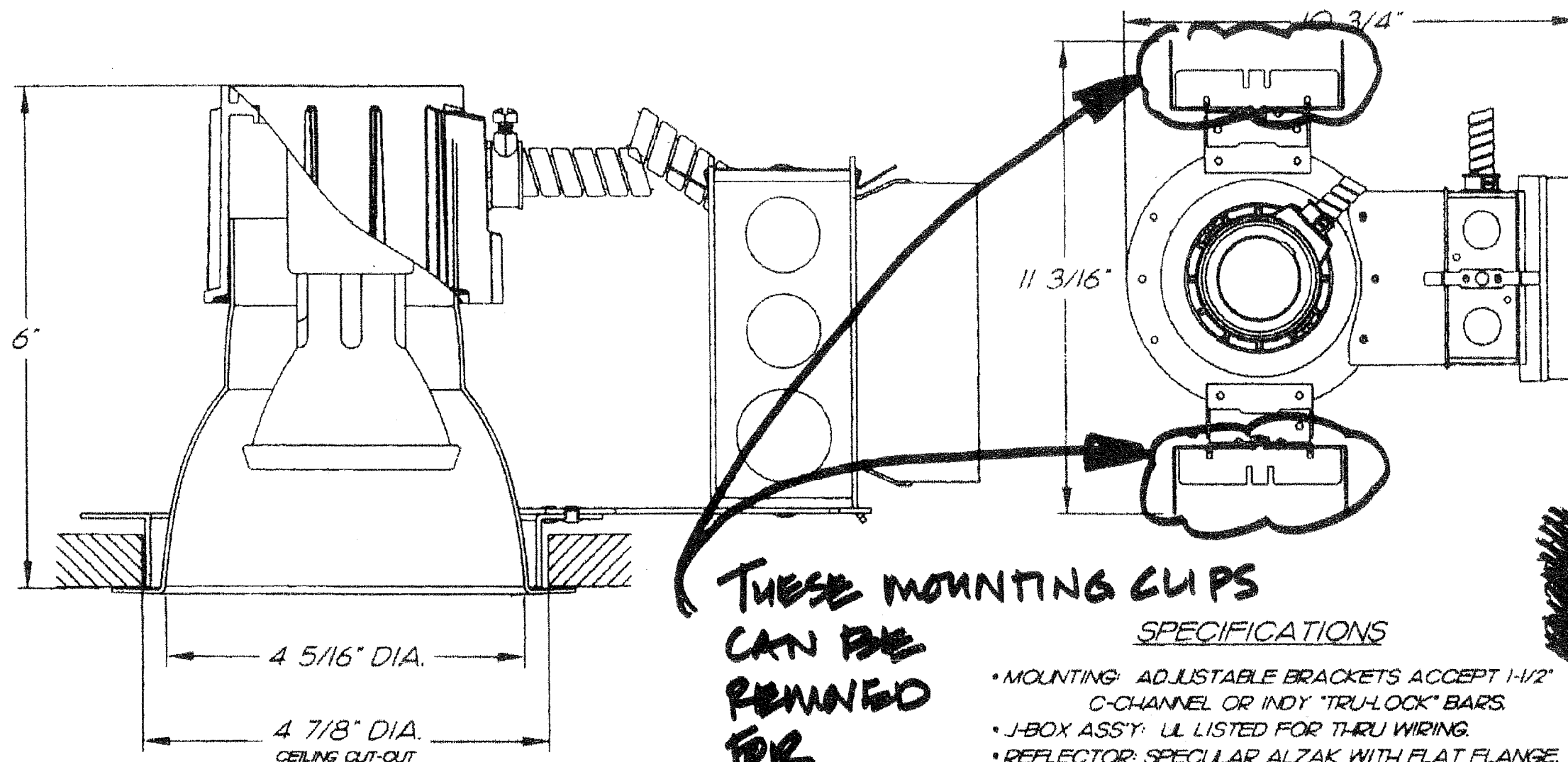
The Landmark Hotel - Entry Canopy Lighting Calucation  
 Charlottesville, VA  
 Scale: 1/8" = 1'-0"

Randy Burkett Lighting Design  
 September 5, 2008



METAL HALIDE CATSKILL W/RM35		
10/00	B-K LIGHTING, INC.	DRAWING NUMBER CUS-1531-08





**THESE MOUNTING CLIPS  
CAN BE  
REMOVED  
FOR  
INSTALLATION,  
TO MAKE  
NARROWER "FOOTPRINT"**

#### SPECIFICATIONS

- MOUNTING: ADJUSTABLE BRACKETS ACCEPT 1-1/2" C-CHANNEL OR INDY "TRU-LOCK" BARS.
- J-BOX ASSY: UL LISTED FOR THRU WIRING.
- REFLECTOR: SPECULAR ALZAK WITH FLAT FLANGE.
- LAMP: 39W PAR20 METAL HALIDE ONLY (BY OTHERS).
- BALLAST: 120/277V J-BOX MOUNTED, 39W ELECTRONIC METAL HALIDE ONLY
- FIXTURE UL LISTED DAMP LOCATION.

CATALOG NO. SP16008-01

SP1600C



JUNO LIGHTING GROUP

12001 Exit Five Pkwy  
Fishers, IN 46037



4" RECESSED DOWNLIGHT  
120/277V 39W PAR20 MH

THIS DRAWING IS THE PROPERTY OF JUNO LIGHTING GROUP. ANY REPRODUCTION OR DISCLOSURE OF THIS INFORMATION WITHOUT WRITTEN CONSENT OF JUNO LIGHTING GROUP IS PROHIBITED.  
JUNO LIGHTING GROUP RESERVES THE RIGHT TO CHANGE MATERIALS AND DESIGN WITHOUT NOTICE.

Copyright 2006 by Juno Lighting Group

PROJECT	SP16008-01	DRAWN	SML	DWG. 1
SCALE	NTS	DATE	04/10/07	1612



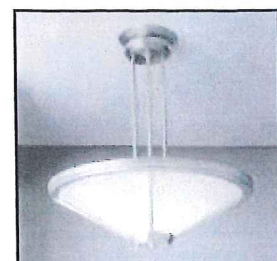
# 3705-WLMENTOR

AARON  
ARCHITECTURAL  
LIGHTING

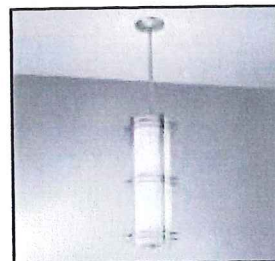


Shown in Brushed Aluminum and Opal Acrylic. Available in 27, 39, 51 and 63 inch lengths. Light Bronze Point and Hand Painted Faux Alabaster also available.

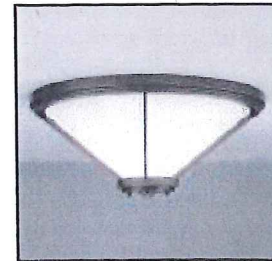
Need to mix details? Modified Standard combines Custom and Standard to create unique lighting solutions.



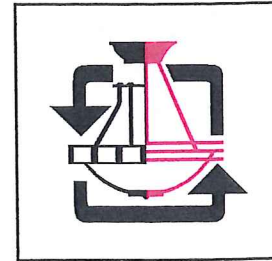
3700 • CONCORD (See page 52)



3707 • DARNEL (See page 50)



3701 • AVION (See page 94)



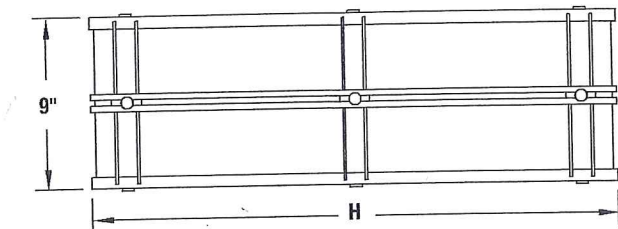
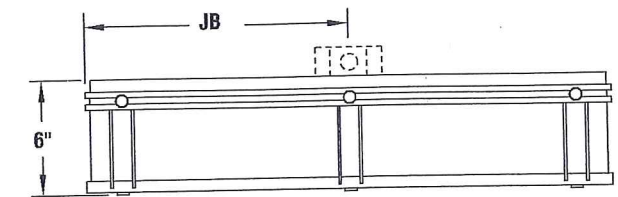
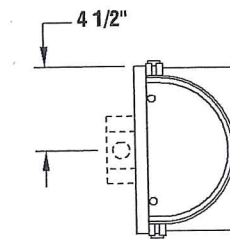
MODIFIED STANDARD (See page 290)

"I don't know anything about music. In my line you don't have to." (Elvis Presley)

## Technical Data:

### 3705-27-WL

	H	JB
3705-27	27 1/2"	13 3/4"
3705-39	39 1/2"	19 3/4"
3705-51	51 1/2"	25 3/4"
3705-63	63 1/2"	31 3/4"



## Product Specifications:

### Catalog #: 3705-WL

Lamping:	3705-WL-27 F -	(2) F17T8/Med. Bi-Pin
	3705-WL-39 F -	(2) F25T8/Med. Bi-Pin
	3705-WL-51 F -	(2) F32T8/Med. Bi-Pin
	3705-WL-63 F -	(2) F40T8/Med. Bi-Pin

### Voltage: 120V or 277V

Lens Options:	OA:	Opal Acrylic
	FAH:	Hand Painted Faux Alabaster
	FAH4:	White Vein
	FAH5:	Antique Alabaster (Beige)
	FAH6:	Gray Vein
	FAH7:	Beige Vein
	FGH:	Faux Glass

<b>Finishes:</b>	<b>Standard</b>	<b>BAL:</b>	Brushed Aluminum with Black Tape Details and Polished Aluminum Knobs
		<b>LBP:</b>	Light Bronze Point with Brushed Texture, Black Tape Details, and Light Bronze Painted Knobs
	<b>Custom</b>	<b>CPF:</b>	Custom Point Finish (Consult Factory)
		<b>CMF:</b>	Custom Metal Finish (Consult Factory)
<b>Special:</b>		<b>STD:</b>	Standard
		<b>MOD:</b>	Modified Standard
<b>Weight:</b>	3705-WL-27	<b>F:</b>	17 lbs.
	3705-WL-39	<b>F:</b>	22 lbs.
	3705-WL-51	<b>F:</b>	27 lbs.
	3703-WL-63	<b>F:</b>	33 lbs.

## How to Specify:

EXAMPLE: 3705-WL-27 - F - 120V - OA - LBP - STD

Catalog Number  
Lamping Option  
Voltage  
Lens Option  
Finish  
Special (STD or MOD)

### NOTES:

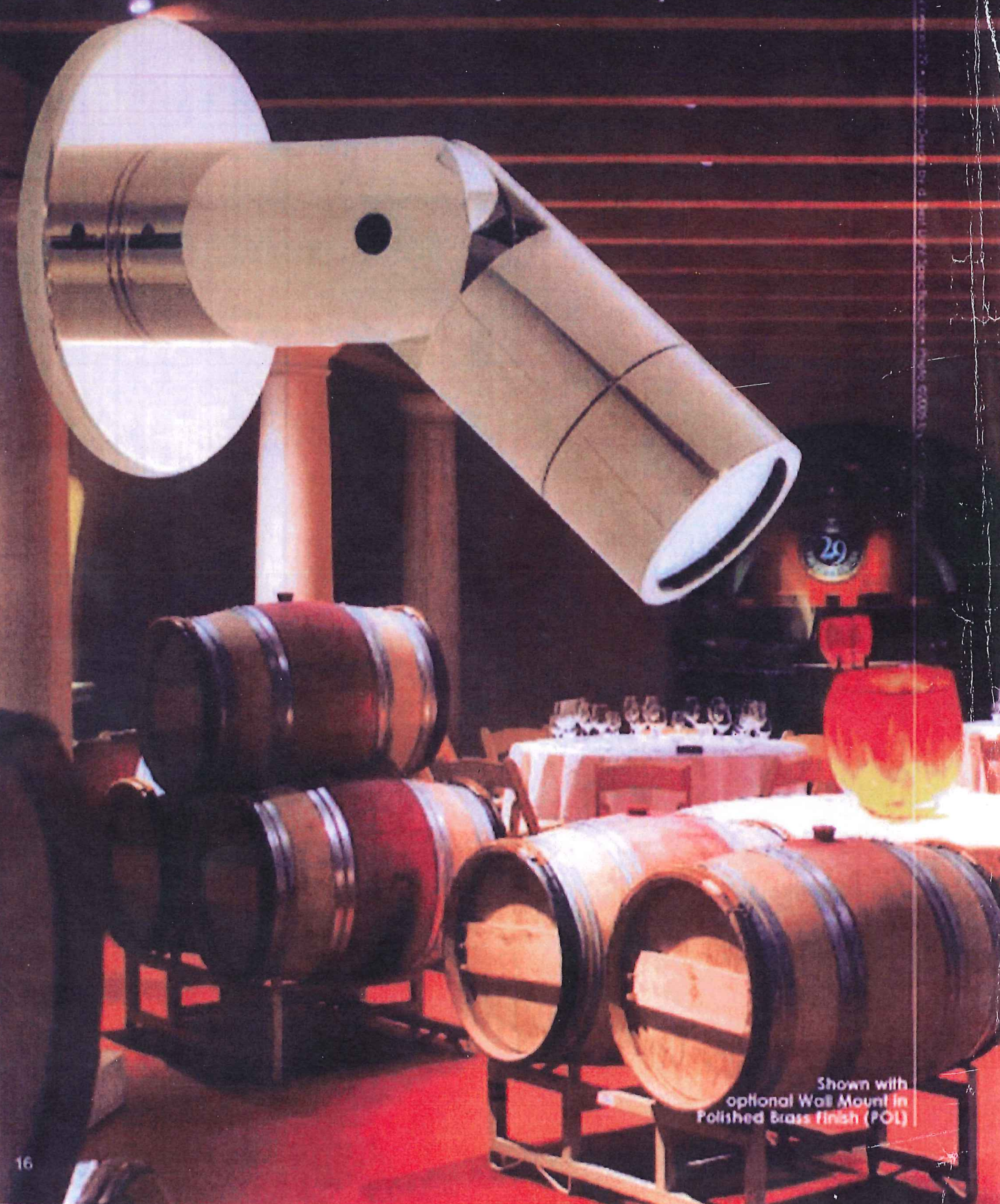
- UL LISTED AND CUL APPROVED. (UL) (CUL)
- ALL WINONA LIGHTING PRODUCTS ARE UNION MADE.
- CUSTOM SIZES AND FINISHES AVAILABLE UPON REQUEST.
- ALL FLUORESCENT FIXTURES AVAILABLE IN 120 VOLT OR 277 VOLT.
- WINONA LIGHTING RESERVES THE RIGHT TO MAKE DESIGN CHANGES WITHOUT PRIOR NOTICE.
- LAMPS NOT INCLUDED.
- BALLAST INFORMATION: ELECTRONIC

TO USE AS YOUR SUBMITTAL FORM, SIMPLY PHOTOCOPY THIS PAGE, FILL IN YOUR SPECIFICATIONS, AND FAX SUBMITTAL TO (507) 452-8528. A WINONA LIGHTING SALES REP WILL RESPOND TO YOUR REQUEST.  
PRODUCT SPECIFICATIONS: 3705 - WL - TYPE: \_\_\_\_\_

TO VIEW OUR LATEST FIXTURES, CURRENT SPECIFICATIONS, FEATURE PROJECTS, AND MORE, VISIT US ONLINE AT [WWW.WINONALIGHTING.COM](http://WWW.WINONALIGHTING.COM)  
(FOR MORE INFORMATION ABOUT OUR WEBSITE SEE PAGES 346-349 FOR ALL THE DETAILS.)



# ES Metal Halide [Remote Ballast]



Shown with optional Wall Mount in Polished Brass Finish (POL)

## Catalog Number Logic

Material	Series	Source	Housing	Lamp	Finish	Lens	Shielding	Cap Style	Base Height	Remote Option	Ballast
B	AR	ES20	RM	276	MIT	9	11	C	3	WM	RM/H20E/MT

**Material**  
Blank - Aluminum  
B - Brass

**Series**  
AR - AxiStar™

**Source**  
ES20 - ES16 Metal Halide (20W)

**Housing**  
RM - Requires Remote Ballast

**Lamp**  
0 - By Others  
276 - (20W) 12" Spot  
277 - (20W) 25" N. Flood  
278 - (20W) 40" Flood

Aluminum & Brass Finishes			Brass	
Powder Coat Color	Satin	Wet & Dry	Machined	MAC
Bronze	BZP	BZW	Polished	POL
Black	BLP	BLW	Milique™	MIT
White (Gloss)	WHP	WHW		
Aluminum	SAP	—		
Verde	—	VER		

See Pages 18-21  
for additional  
finish choices

**Lens**  
9 - Clear Lens (Standard)  
10 - Spread Lens  
12 - Soft Focus Lens  
13 - Rectilinear Lens

**Shielding**  
11 - Honeycomb Baffle

**Cap Style**  
A - 45°  
B - 90°  
C - Flush  
D - 45° less weephole  
(for Interior Use Only)  
E - 90° less weephole  
(for Interior Use Only)  
F - 90° cutoff  
with flush lens

**Base Height**  
3 - 3" with Anchor Base (Standard)  
6 - 6" with Anchor Base  
12 - 12" with Anchor Base  
18 - 18" with Anchor Base  
24 - 24" with Anchor Base

**Option**  
PP - Power Pipe option with 18" Stake  
WM - Wall or Ceiling Mount with 5" dia. canopy\*  
\*Base height limited to 8" max. with brass fixtures

**Remote Ballast**  
PM2RM-H20E-120 or 277 - 20 Watt UFM  
RM-H20E-120 or 277 - 20 Watt Remote Wall Mount

For lamp  
information,  
see page 25

## Specifications

**Body**  
Fully machined from solid, copper-free aluminum. Also available in solid machined brass. Unibody design provides enclosed, water proof airway and heat sink to maximize lamp life. Integral knuckle for maximum mechanical strength. High temperature, silicone O-Ring provides water tight seal.

**Knuckle**  
Aim and Lock, and 360HD™ Technology allows vertical to horizontal aiming and rotational aiming with positive aim-and-lock technology and provides integral, water tight airway.

**Cap**  
Machined from copper-free aluminum. Also available in machined brass. Accommodates up to (2) lens or lower media. Choices from 45° cutoff (A or D), 1" deep beam with 90° cutoff (B or E), flush lens (C), or 90° cutoff with flush lens (F) cap styles. A and B caps include weep-hole for water and debris drainage. C and E caps exclude weep-hole and are for interior use only.

**Base**  
Machined from copper-free aluminum. Also available in machined brass. Available in 6" standard increments to facilitate fixture elevation above grade. Mounts to anchor base (standard) or to optional Power Pipe™ or canopy for wall or ceiling installation.

**Installation**  
Machined copper-free aluminum mounting base with 7/8" dia. slip conduit hole and (2) 3/16" dia. anchor bolt holes (hardware by others).

Optional 1 1/2" Power Pipe™ - Heavy duty Schedule 80 PVC stake for direct burial into soil or concrete.

Optional 5" dia. machined aluminum canopy permits mounting to junction box (gasket by others). Also available in machined brass. 6" maximum base height for brass products when mounted to canopy.

**Lens**  
Shock resistant, tempered, clear glass lens is factory adhered to fixture cap and provides hermetically sealed optical compartment.

**Lamp**  
For use with 20 watt maximum, GX-C base, ES16 metal halide lamps.

**Ballast**  
For use with remote, electronic metal halide ballast. (see page 30 ballast data).

**Wiring**  
Listed® coated wire, 18AWG, 90V, 250° C rated and certified to UL 1609 standard.

**Hardware**  
Tamper-resistant, stainless steel hardware. Knuckle adjustment screws are additionally black oxide.

**Finish**  
StarGuard® (PVC Paint) is a 15 stage chrome-free process cleans and conversion coats aluminum components prior to application of Class "A" TPO polyester powder coating. Brass components are available in powder coat or handcrafted metal finish.

**Warranty**  
5 year limited warranty.

**Listings**  
AFI and CSA, wet location listed.



Model is representative of product features.

