

**From:** Scala, Mary Joy  
**Sent:** Thursday, March 20, 2014 1:11 PM  
**To:** 'Jeff Dreyfus'  
**Subject:** RE: Red Pump restaurant - minor modification to building elevation

The revised design is approved.

**Mary Joy Scala, AICP**

Preservation and Design Planner  
City of Charlottesville  
Department of Neighborhood Development Services  
City Hall – 610 East Market Street  
P.O. Box 911  
Charlottesville, VA 22902  
Ph 434.970.3130 FAX 434.970.3359  
[scala@charlottesville.org](mailto:scala@charlottesville.org)

**From:** Jeff Dreyfus [mailto:jd@bdarchitects.com]  
**Sent:** Thursday, March 20, 2014 11:55 AM  
**To:** Scala, Mary Joy  
**Cc:** Dean Andrews; Molly Lapekas; Tessier Tim  
**Subject:** Red Pump restaurant - minor modification to building elevation

Mary Joy,

The design of the Red Pump exterior elevation has been modified slightly - articulation at the at the main (west) entry and the service (east) entry have been widened by 9". The operable windows in the middle have been reduced in size accordingly.

The attached pdf has two pages: one that shows the originally approved design, the other that shows the proposed modifications (noted in red).

Because there isn't a substantive difference between the two drawings, I'm hoping you can administratively approve the modification. This is critical to staying on schedule with the fabrication and installation of the doors and windows.

We will plan to submit all of the various outdoor items next week (umbrellas, awnings, etc.) for review at the April meeting. But waiting to review this tweak of the elevation at the April meeting would considerably delay fabrication and the opening date.

Please let me know if we can proceed with this change.

Thanks for your time.

Jeff

jeff dreyfus  
bushman dreyfus architects pc

820 east high street • suite b  
charlottesville va 22902  
work 434.295.1936 x 234  
web [www.bdarchitects.com](http://www.bdarchitects.com)



DOORS, WINDOWS AND PANELS

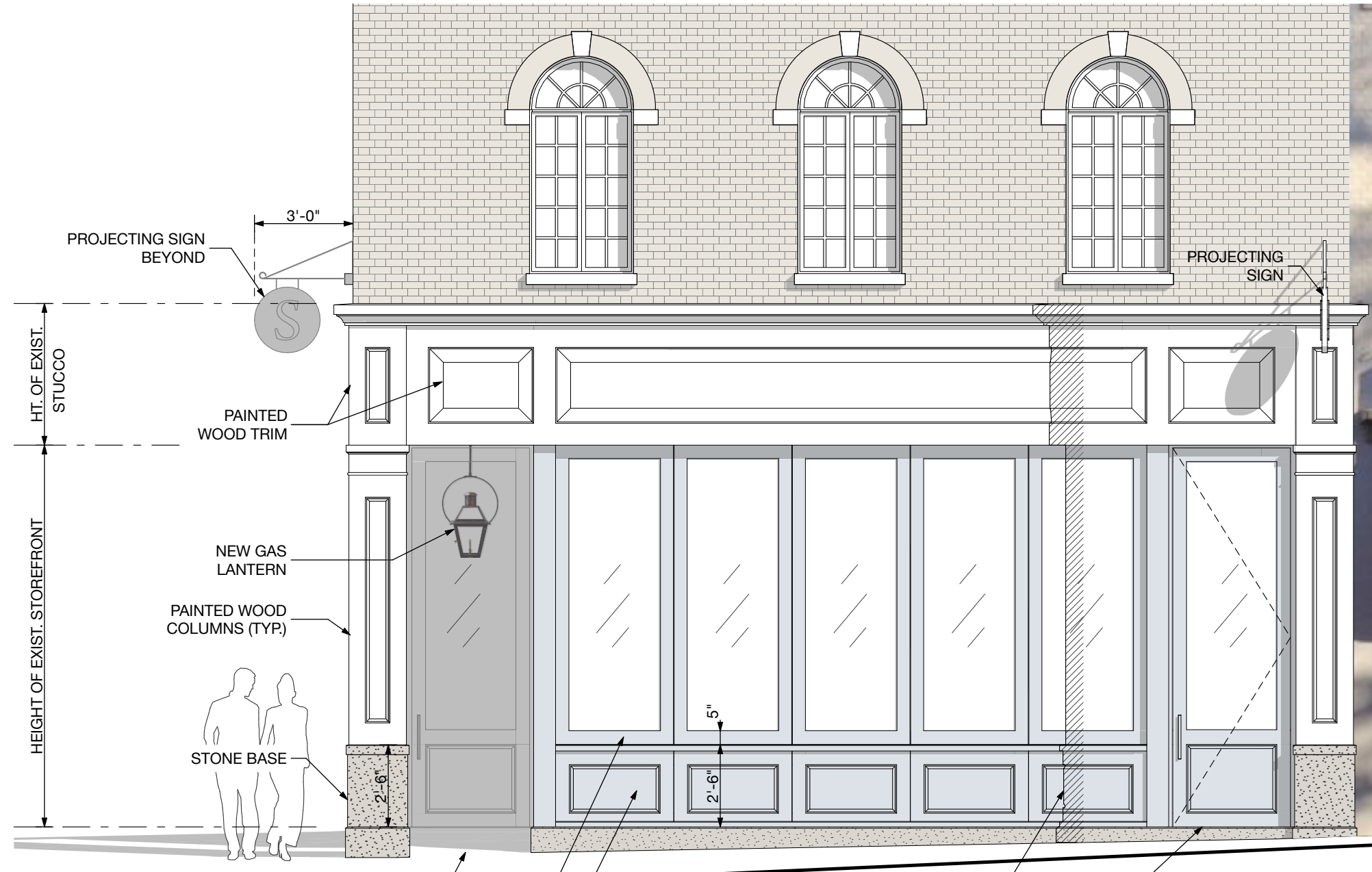
STONE BASE

PANELED COLUMNS AND FRIEZE

BRICK



**4TH STREET ELEVATION**

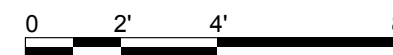


- MAIN ENTRANCE
- FOLDING STOREFRONT WINDOWS
- FIXED PAINTED WOOD PANELS

- ELEVATION PROFILE
- FOOD SERVICE DOOR

**MALL ELEVATION**

**PREVIOUSLY APPROVED**





DOORS, WINDOWS AND PANELS

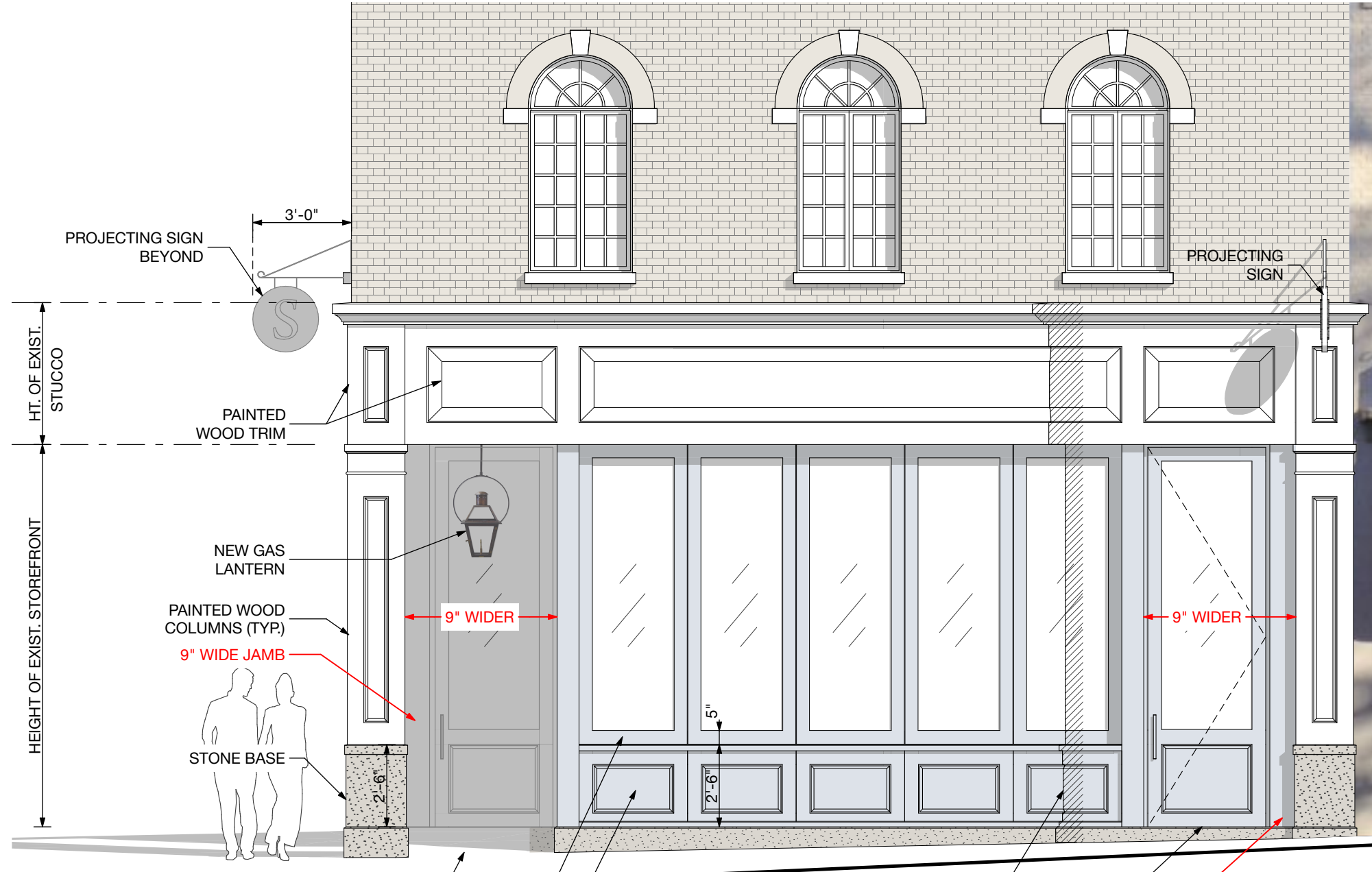
STONE BASE

PANELED COLUMNS AND FRIEZE

BRICK



4TH STREET ELEVATION



MAIN ENTRANCE  
FOLDING STOREFRONT WINDOWS  
FIXED PAINTED WOOD PANELS

ELEVATION PROFILE  
FOOD SERVICE DOOR  
9" WIDE JAMB

MALL ELEVATION

**PROPOSED**

