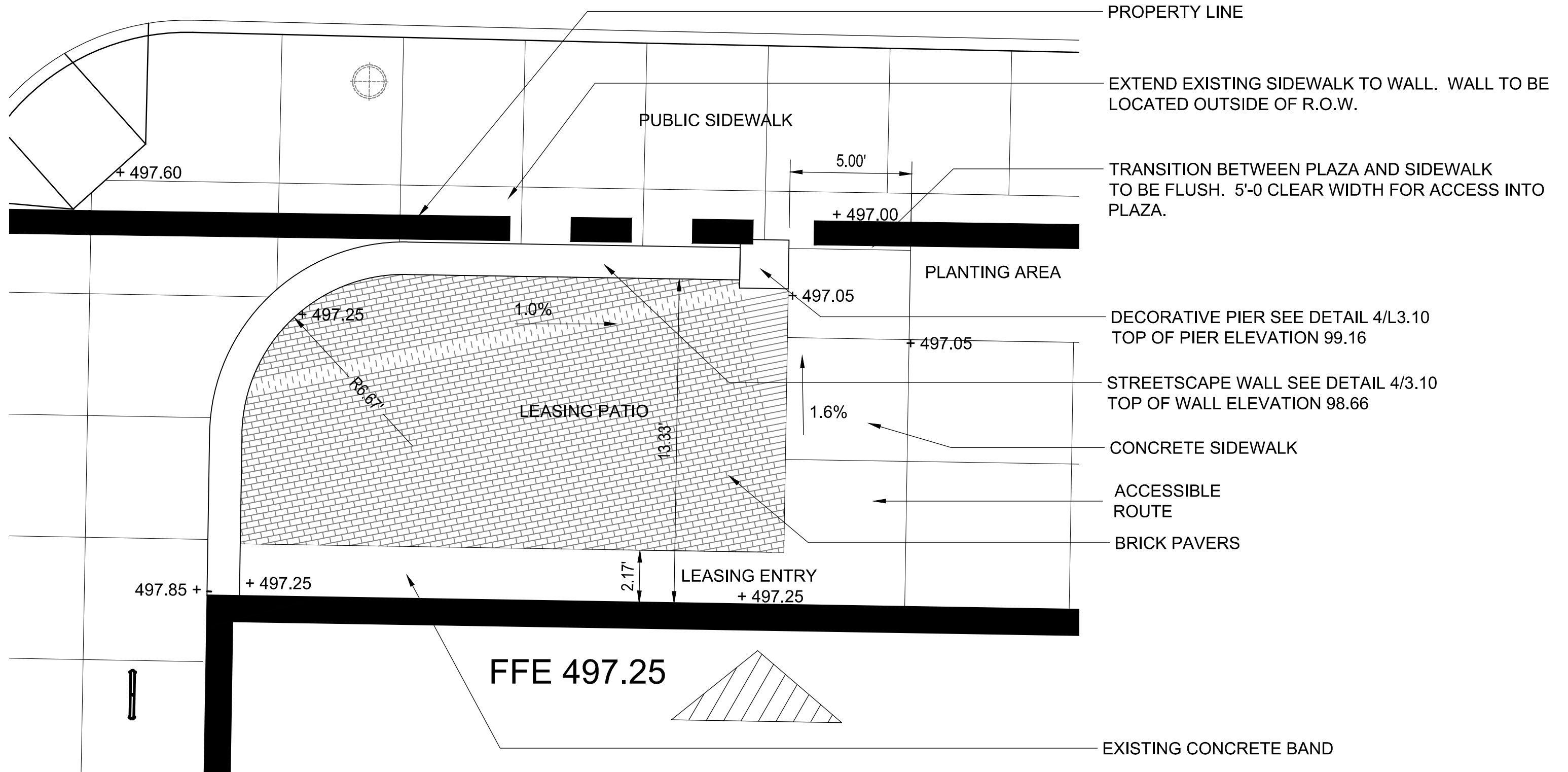


THE FLATS AT WEST VILLAGE

CHARLOTTESVILLE, VA

ENTRY PLAZA SKETCH



1 CONCRETE SIDEWALK

1/2" = 1'-0"

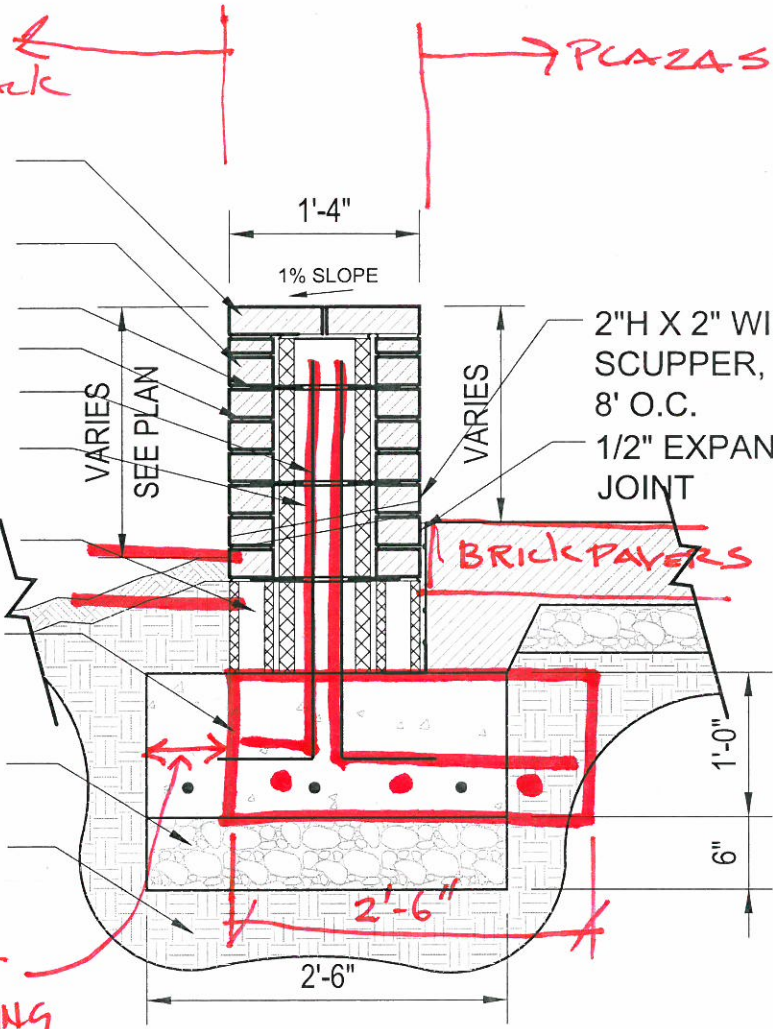
2 CONCRETE

1 1/2" = 1'-0"

AS14

STREET SIDE ←
EXISTING SIDEWALK → PLAZA SIDE

- BRICK CAP
- BRICK VENEER
- MASONRY WALL TIES, TYP.
- 3/8" MORTAR JOINT
- #4 REBAR, SPACED 16" O.C.
- 8"x8"x16" CMU CORE WITH GROUT FILLED CELLS
- 4"x8"x16" CMU CORE WITH GROUT FILLED CELLS
- REINFORCED CONCRETE FOOTER, SEE STRUCTURAL FOR REQUIREMENTS
- COMPACTED AGGREGATE, 98% MPD, TYP.
- COMPACTED SUBGRADE, 95% MPD, TYP.



- BRICK CAP
- BRICK VENEER
- SOIL 4" BELOW WALL CAP
- MASONRY WALL TIES, TYP.
- DAMP PROOFING
- 3/8" MORTAR JOINT
- #4 REBAR, SPACED 16" O.C.
- 8"x8"x16" CMU CORE WITH GROUT FILLED CELLS
- 4"x8"x16" CMU CORE WITH GROUT FILLED CELLS
- REINFORCED CONCRETE FOOTER, SEE STRUCTURAL FOR REQUIREMENTS
- COMPACTED AGGREGATE, 98% MPD, TYP.
- COMPACTED SUBGRADE, 95% MPD, TYP.

SHIFT FOOTING 7"

A. KNEEE WALL

4 STREETSCAPE WALL

3/4" = 1'-0"



The Flats @ West Village
Ambling University Development Group
Estimate for Reworking Front Entrance and Adding Seat Wall in Front of Leasing Center
12/3/2014

Project 1 -Leasing Center Brick Seat Wall

Demo Existing Concrete	\$ 500.00
New Seat Wall w/ Footing	\$ 8,750.00
Relay Brick Pavers 275 SF	\$ 2,062.50
General Conditions/Overhead/Profit	\$ 2,312.50
Total	\$ 13,625.00

Project 2 - Rework Front Entrance to Eliminate Step

Demo 650 SF of Existing Pavement/Pavers	\$ 1,950.00
New Concrete Paving 362 SF	\$ 1,991.00
Relay Brick Pavers 288 SF	\$ 2,160.00
General Conditions/Overhead/Profit	\$ 1,525.25
Total	\$ 7,626.25

Total Projected Cost For Both Projects **\$ 21,251.25**