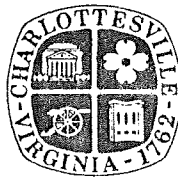


Architectural And Historic Survey



Identification

STREET ADDRESS: 419 Ninth Street, NW
MAP & PARCEL: 31-82
CENSUS TRACT AND BLOCK:
PRESENT ZONING: R-2
ORIGINAL OWNER: J. A. Davis
ORIGINAL USE: Residence?
PRESENT USE: Vacant
PRESENT OWNER: J. S. Dawson, Estate
ADDRESS:

HISTORIC NAME: Davis-Johnson-Dawson House
DATE / PERIOD: c. 1891, c. 1893, c. 1911-20
STYLE: Vernacular
HEIGHT (to cornice) OR STORIES: 2 storeys
DIMENSIONS AND LAND AREA: 50' x 118.4' (6315 sq. ft.)
CONDITION: Poor
SURVEYOR: Bibb
DATE OF SURVEY: Spring 1985
SOURCES: City/County Records

ARCHITECTURAL DESCRIPTION

As originally built, this was a 2-storey, 2-bay single-pile house, possibly with a 1½-storey rear wing. An early addition made it three wide bays wide, and the side hall became a central hall. Care was taken to make the facade symmetrical, and the weatherboarding was replaced so that there would be no seam, but the windows do not match, and the low-pitched gable roof has a small gable centered over the original portion of the facade. The roof is covered with standing-seam metal and has projecting eaves and verges and a boxed cornice with returns. There are two interior chimneys with small caps. The double-sash windows are 6-over-6 light in the original portion of the house and 2-over-2 light in the southern extension. Second storey windows are somewhat shorter and all have plain trim and once had blinds or shutters. There is a window on each side of the chimney at the north end, while the south wall is blank. There are pierced circular air vents in the original gables and a louvered triangular vent in the newer one. The house is set on low brick piers. A one-bay veranda is centered on the long facade. It has a very low pitched hip roof, covered with standing-seam metal, with Philadelphia gutters, a boxed cornice, plain frieze, and Eastlake posts with sawn brackets. There is no balustrade. The four-paneled entrance door is flanked by 2-light sidelights over panels, and there is a 2-light rectangular transom over all. A 1½-storey wing covers most of the rear elevation of the original portion of the house. Its 6-over-6 light windows support the possibility that it might be original. The roof has cornice fascia only. A small one-storey, shed-roofed addition, possibly an enclosed porch, fills in the northwest corner. It has an interior end chimney on its northern wall. A larger one-storey, shed-roofed addition and back porch fill in the southwest corner. Its windows are wider and 2-over-2 light. The back porch is very simple, with exposed rafters, plain piers, and a concrete floor at ground level.

HISTORICAL DESCRIPTION

J. A. Davis purchased a corner lot in 1891 (ACDB 97-241). Two years later, he sold the southern half to Wilhelmina Morse for three times what he had paid for the entire lot (ACDB 99-350). Tax records show that there was a house on the lot, but do not show when it was enlarged. Miss Shirley Randolph bought the house in 1899 (ACDB 115-101) and sold it the next year to Thomas E. Ford (ACDB 116-307), from whom I. F. Jones bought it in 1905 (ACDB 130-398). George A. Johnson bought the house in 1911 (ACDB 145-347) and added more land at the rear (west) of the lot (ACDB 139-377). The 1920 Sanborn Map and the price when he sold to J. S. Dawson in 1923 (City DB 45-117) indicate that Johnson probably made additions to the house. It is still owned by Dawson's estate (DB 67-77).

31-82 ✓

Wm Dawson, 419 9th
(white?)

30 x 118.4 (6315)
R-2

419 9th St NW (Alphano St.)

67-77

J. S. Dawson est (mid 1940's?) plat 1-68469, 101-11

45-117
A & D B

" "

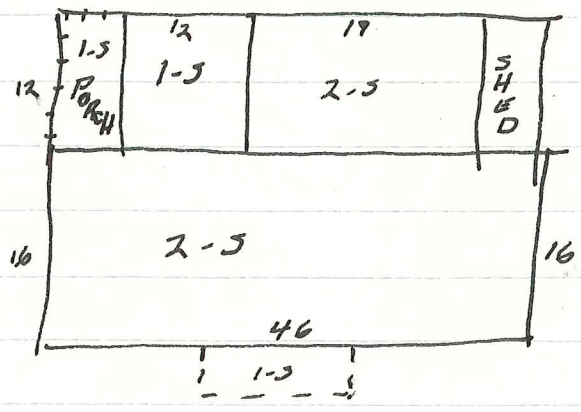
1923

145-347

A & D B 91-482

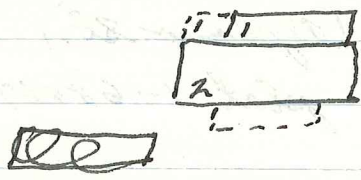
2-5, 1-fam, 6 rooms, 1 B
piers, wood, metal gable
0 fireplaces
very poor condition
old

1995 - repair porch, reinforce found.



Davis - c 1891-1893 - 2 yr
Johnson - 1911-1923 - 12 yr
Dawson - 1923 -

1920 Sanborn

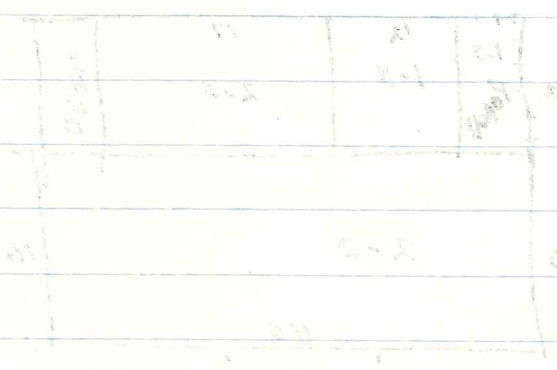


stable behind

1st section probably 1891-93 by Davis (deeds & tax)
 2nd " " 1911-19 by Johnson (tax & Sanborn)

City Directories

1910-11



45-117 Geo A & Beanie C ^{Johnson} ~~Dawson~~ → J S Dawson \$4000
 9/21/1923 a) 5 part L 39, of bldg & impts, in Payne & Massie's addn
 (plat ^{ACDB} "91-482") part of ACDB 145-347
 b) piece W of above, 50' x 40'
 same as ACDB 145-347

ACDB

145-347 Isaac F & Lucy F Jones → George A. Johnson \$900
 4/12/1911 1) 5 part L 39 in Payne & Massie's addn
 of the bldg & impts
~~49' x 48'~~ same as 130-398
 2) piece W of above
 same as 139-377

130-398 Thos. E. Ford → I. F. Jones \$820
 6/22/1905 5 part L 39
 "of dwelling house"
 same as 116-307

116-307 Miss Shirley P. Randolph, of Culpeper → Thos. E. Ford \$450
 2/7/1900 5 part L 39, of dwelling house
 same as ACDB 99-350, 1893, J A Davis → Mrs & W Morse
 " " 115-101 1899, Mrs Morse → S P Randolph \$200

115-101 ~~1899~~ ^{Wilhelmina} Morse → Shirley P. Randolph \$600
 1899 1) "5 part L 22 in the section known as the Villa Meadow,
 or ~~see Ford~~ ^{see Ford} property"
 same as for L W Cot. 1893, City OB
 2) 5 part Lot 39
 same as ACDB _____, 1893, for J A Davis

~~100034~~

99-350 JA & AL Davis → Wilhelmina L. Morse #750

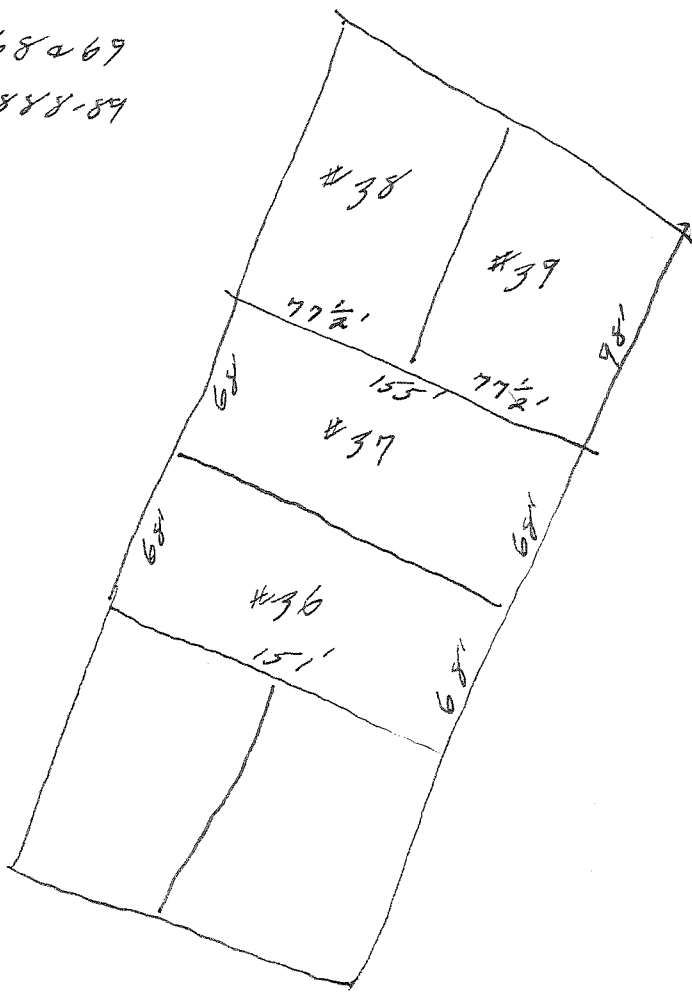
4/7/1890 5 part L39....

part of ACDB — , 1891, for Massie & Payne

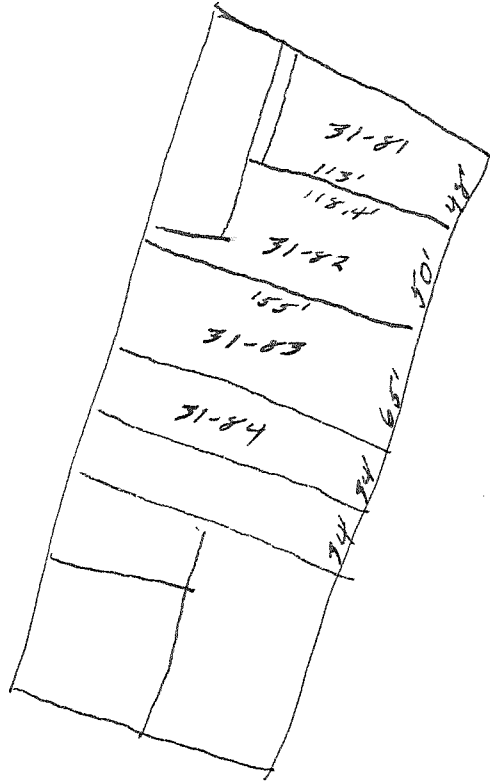
97-241 AD Payne & JFA Massie (Payne & Massie) → J.A. Davis #250

2/26/1891 Lot 39 (192' x 98') in " " 's 1st addm

1-68269
c. 1888-89



~~1888-89~~
current tax map



419 NW 9th

1891, 92 Darwin

1897 WI Morse 2.4 P.H. + 0 = 65

1897, 95, 94 Wilhelmina 18 Jeff + 400 = 450

1900 Morse, Randolph

1900, 05 Thos E. Ford 18 Jeff + 400 = 450 for WL Morse

1895 WE Morse 2.4 P.H. - R lot + 0 = 100

1917²⁰ same " " " 100 + 400 = 500
#2 ann

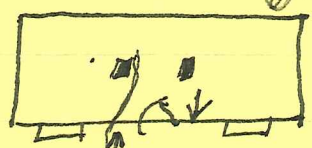
1922²¹ (white) Geo A Johnson 2.39 Jeff 200 + 800 = 1000

1924 " J S Dawson " #419 Alphonse St " " " for Geo A Johnson

70079-

419 8th

where in relation
to wing?



2-5, 3-bay, single pile

extra long, because 2-bay was comp. house
~~low found~~ low ^{brick} ~~stone~~ ^{seam}

weatherboarded, no seam on facade, but in at rear

low gable roof w/ ^{add} "central" gable bet cent. & N bays,
55 m, proj eaves & verges, boxed cornice w/ returns

windows 6/6 cent & N bays, 2/2 S bay facade, all plain trim,
had shutters, shorter 2nd, on N, S bay

1-b

1-bay veranda: ^{corr} low 55 m hips roof, Phila. gutters,
boxed cornice, pl fringe, E wall posts w/ sawn brackets,
o bal.

ent. cent. bay facade: 4-panel door, 2-l sidelights/panel,
2-l transom over all

2 int chim w/ sm caps

pierced circular air vent in gable facade ^{& N}, S lower ^S end

rear additions

$\frac{1}{2}$
R5 -

steeper gable 55m, but lower roofline (~~17~~^{1/2}-5)
proj eaves & verges, cornice fascia only
6/6

15 shed-roof room & porch → 5
metal roof

wider $\frac{1}{2}$ of wider pl trim, 4-panel door 5
porch - exposed rafters, 2 piers, one floor

seam on house in rear

5m 1-3 shed-roof N
int and skin N
35m

