

Architectural And Historic Survey



710

Identification

STREET ADDRESS: 1000 Belmont Avenue

MAP & PARCEL: 57-65

CENSUS TRACT AND BLOCK:

PRESENT ZONING: R-2

ORIGINAL OWNER: School Board of City of Charlottesville

ORIGINAL USE: Elementary School

PRESENT USE: Elementary School

PRESENT OWNER: School Board of City of Charlottesville
ADDRESS:

HISTORIC NAME: George Rogers Clark School

DATE / PERIOD: 1930-31, 1959

STYLE: Colonial Revival

HEIGHT (to cornice) OR STORIES: 2 storeys

DIMENSIONS AND LAND AREA: 3 acres

CONDITION: Good

SURVEYOR: Bibb

DATE OF SURVEY: Summer 1981

SOURCES: City Records

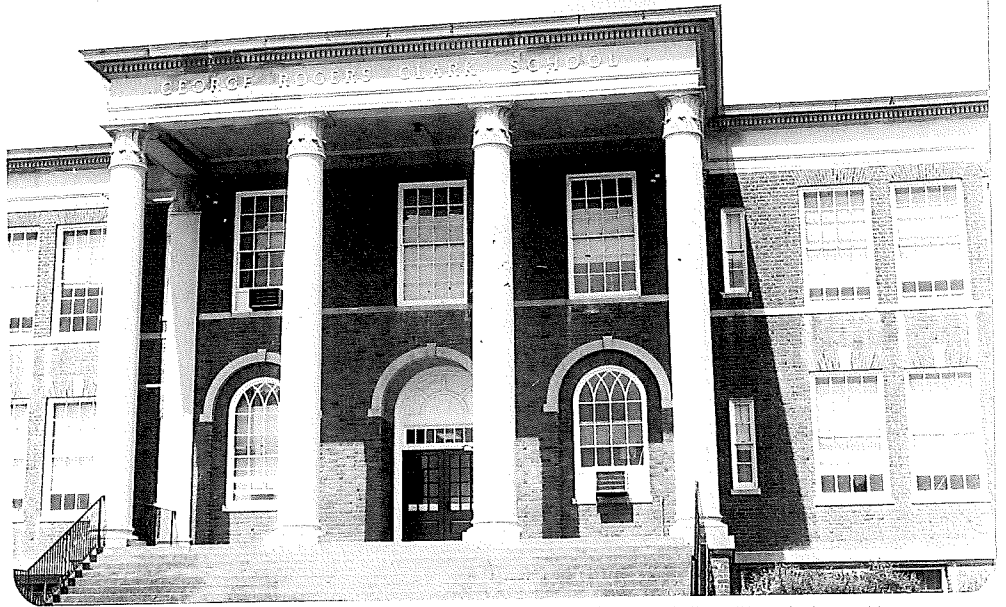
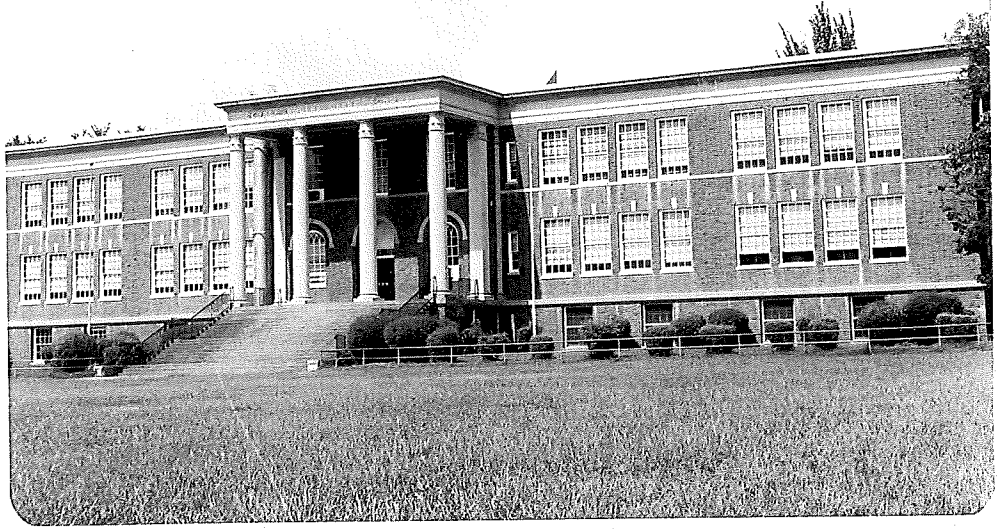
The Daily Progress, Ch'ville Bicentennial
edition, 4/13/62

ARCHITECTURAL DESCRIPTION

Clark School faces east across a playground that occupies an unopened section of Castalia Street. It consists of a two-storey central pavillion with a full-height portico and flanking two-storey, two-bay wings, set on an English basement. Walls and foundation are constructed of brick laid in alternating stretcher and header-stretcher courses with concrete water table and stringcourse. The roof is flat or nearly falt and has a deep concrete entablature with dentiled cornice. No chimneys are visible. In each of the side bays there is a group of four separate double-sash, 12-over-12 light windows with moulded surrounds, concrete sills, and jack arches. Those at the first level have concrete keystones. Smaller 2-over-2 light windows without arches flank the central pavillion. Basement windows are 8-over-8 light with concrete sills, two per bay. A flat-roofed full-height portico with four Corinthianesque columns and the name "GEORGE ROGERS CLARK SCHOOL" on the frieze covers the facade of the pilastered central pavillion. At the first level, circular-headed double-sash windows with wooden Gothic tracery and concrete arches with keystones flank a round-arched architrave. The portico floor and broad flight of steps are of concrete and have a wrought iron balustrade. There are three 12-over-12 light windows at the second level. Fenestration on the rear elevation of the central pavillion is like that in the side bays. The ends of the building are three bays wide with slightly projecting pilastered center bays. In the center bay of the south end, a pair of multi-light doors with a multi-light rectangular transom is set within a concrete-paneled entry recess with a concrete architrave surround and an entablature with a Greek fret band on the cornice and the name "CLARK" on the frieze. The concrete steps have a brick balustrade. Above the entrance, there is a circular-headed window with wooden Gothic tracery. There are single 9-over-9 light windows matching those on the facade in the side bays. The north end of the building is covered at the basement and first storey levels by the L-shaped 1959 addition. It is two storeys tall and extends west along Belmont Avenue. The brickwork matches that in the original building, and it has a flat roof with simple parapet.

HISTORICAL DESCRIPTION

Land was purchased in Belmont in 1929 for the construction of a third elementary school for white students (City DB 65-41, 43, 44, 50, 51, 52, 62, 71, 95, 273, 291, 292, 293, 299, 300, 301, 302, 323). One house on the site, the Ficklin-Crawford Cottage, was moved by its owner to a new location. George Rogers Clark Elementary School, named for the famous "Conquerer of the Northwest" who was born in Albemarle County, opened in 1931. Miss Florence Buford, for whom Buford Middle School was named, served as Principal from 1931 until her retirement c. 1963. A new wing providing additional classroom space was added in 1959.



Miss Buford retired

1962-63 ✓

1963-64 ?

1964-65 X

1965-66 X

Mrs Harnes says Miss Buford retired first

5765 ✓

3 ac +
R-2

Clark

hatched by 10-10-11

✓ 20-2011

✓ 20-2011

X 20-2011

X 20-2011

322-5

brick, brick, gable

built 1930-59

1967 - new roof

1929

65- 41, 43, 44, 50, 51, 52, 62, 71, 95,

273, 291, 292, 293, 295, 300, -01, -02, 32

N same, ant goz

S. end; 3-bay

side bays; 9/9 l windows turned as on facade

center " proj sl & is pilastered (4) but at water table & entab;

2nd level - round-arched cove-headed ^{collier} tracery as on facade, but not inset

1st level - conc ^{architrave} ^{surround} supports entab w/ brick feet band

on cornice; conc-paneled int. recess, pr 15-l doors w/

~~18-l~~ rect transom

~~"clark" on fringe~~

conc steps, brick bal

center bay rear projects, but windows same as rest,

basement door center bay

sm windows in sides of proj also

addn:

L shaped, w 45 ft N corner (near)

same brick

2-3 on low found (= b & 1st)

flat roof

3 bays on Bel Ave, each: groups 4 wind flanked by groups 2

2-4-2-2-4-2-2-4-2

D R Clark

flat roof & chim
all concrete, no stone
1st level

face schoolyard E, not seen, street planned?

2-3, 5-bay, double pile

high Eng base; found 1-c dm-wf-Flm (5/h-5/5/h-5)

proj sandstone water table

walls same bond, flush sandstone stringcourse

flat ~~roof~~ roof, ——— proj eaves, ^{stone} deep entab w/
dentiled cornice

chim:

in each bay: 4 sep 12/12 wind w/ conc sills, rounded
thin, jack arches w/ conc keystone at ^{1st} level only

~~base~~ on narrow 2/2 w/out arch flank cent bay

basement 8/8, conc sill, 2 per bay, all evenly spaced

Center ^{bay} projects into full-ht portico
brick same

same stringcourse

3 reg wind 2nd level

1st level: 3 round ^{conc} stone arches w/ keystones, rounded

side: circular-headed double-arch wind w/ ^{conc} Gothic tracery
& brick round arch within other

center: round-arched entry recess; double doors 12 l/panel,
8-l rect transom, round-arched architrave,

panel w/ open book on fan

4 sandstone Corinthianesque columns & 2 $\frac{3}{4}$ pilasters

support entab cont w/ roof, name on frieze

conc floor & broad flight steps, wrought iron bal

