

Thomson / Fa 11 1977

LANDMARK



SURVEY

IDENTIFICATION

Street Address: 702 Ridge Street
 Map and Parcel: 25-65
 Census Tract & Block: 4-334
 Present Owner: George R. Ferguson and Bernice C. Ferguson
 Address: 702 Ridge Street, Charlottesville, VA
 Present Use: Funeral Home
 Original Owner: John L. Walters
 Original Use: Residence

BASE DATA

Historic Name: Walters House
 Date/Period: 1900
 Style: Colonial Revival
 Height to Cornice:
 Height in Stories: 2
 Present Zoning: B-1
 Land Area (sq.ft.): 40,000
 Assessed Value (land + imp.): \$40,430

ARCHITECTURAL DESCRIPTION

702 Ridge Street is a fine example of early Colonial Revival style (more specifically, Georgian Revival). House form is a large, three-bay, double-pile, nearly square rectangle, two storeys in height over a partial basement. A single-storey brick addition plus a porch (partially enclosed) were built across the rear not long after the main house was constructed. Construction is brick without bonding on the facade, and with American bond every sixth row elsewhere. Mortar joints are painted brick red with a finer, simulated joint painted over. Roof is gable covered with standing-seam tin. A small center gable with cornice returns supported on two-storey brick pilasters with moulded terra cotta capitals frame the center bay. A fine wood cornice, with cornice returns at the gables, trims the aves: facade cornice has dentils. Rain guttering is concealed behind the cornice. Two interior end chimneys are located in each gable end. Facade windows are one-over-one-light, sash type with rubbed brick jack arches. A large Palladian window with triple-hung center window and double-hung, leaded stained glass side windows is centered on the second floor facade. Side and rear windows are two-over-two-light sash with segmented arches. Two smaller attic windows in each gable end are round-head. The central main entrance is through double, full-length-glass panel doors flanked by pressed-pattern glass side lights above wood panels. Thin, fluted Tuscan pilasters separate doors from side lights; and similar but sturdier pilasters frame the entryway and support a semi-elliptical transom light of leaded glass. A single-story, flat-roof portico covers the central bay.

HISTORICAL DESCRIPTION

Tax records would seem to indicate that the present house was constructed in 1900 by John L. Walters. The house stands on lot #2 of the Albemarle Military Institute, operated on the site from 1856-1860 by Col. John Bowie Strange. Lot #2 was the site of the original school house. The property had been purchased from Strange by R.F. Omohundro (no deed, see Co. DB70-322) and then had passed to Augustus Bodeker (Co. DB60-11, DB60-15) who subdivided in 1874. The Walters family (Mrs. Mildred Walters) purchased the lot in 1879 (Co. DB75-166). The house was a Wheeler family home from 1915 (City DB28-10) to 1946 (City DB129-302) when it sold to M. Lavelle King. The present owner purchased the property in 1955 (City DB188-225) and presently operates the Ferguson Funeral Home therefrom. (See also City DB31-99, DB73-188, DB74-324, DB123-293, DB181-143, DB351-338.)

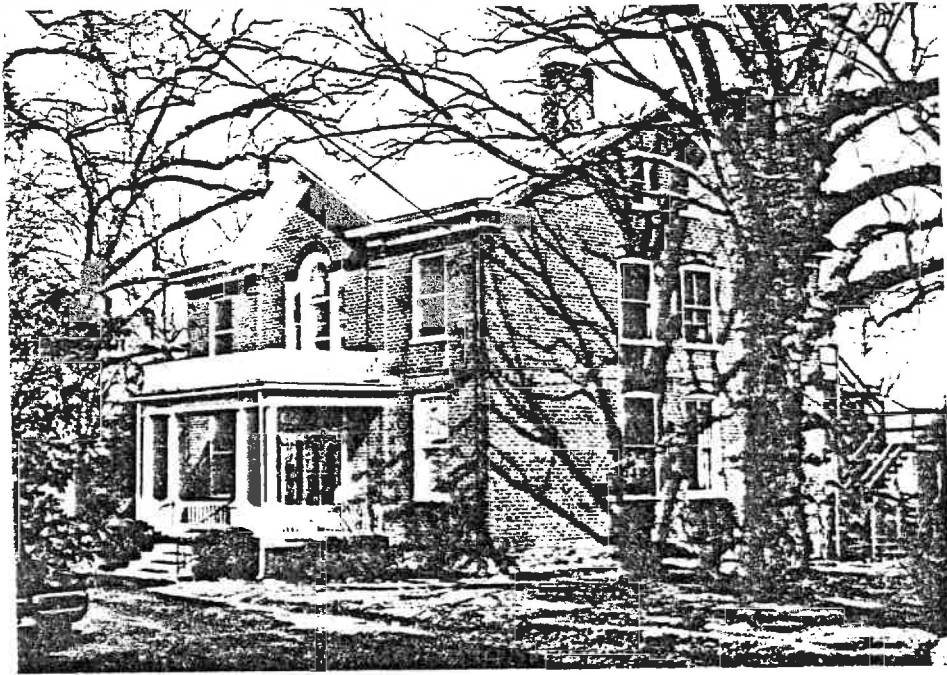
GRAPHICS

CONDITIONS

Excellent

SOURCES

City and County Records



LANDMARK



SURVEY

IDENTIFICATION

Street Address: 702 Ridge Street
Map and Parcel: 25-65
Census Track & Block: 4-334
Present Owner: George R. Ferguson and Bernice C. Ferguson
Address: 702 Ridge Street, Charlottesville, VA
Present Use: Funeral Home
Original Owner: John L. Walters
Original Use: Residence

BASE DATA

Historic Name: Walters House
Date/Period: 1900
Style: Colonial Revival
Height to Cornice:
Height in Stories: 2
Present Zoning: B-1
Land Area (sq.ft.): 40,000
Assessed Value (land + imp.): \$40,430

ARCHITECTURAL DESCRIPTION

702 Ridge Street is a fine example of early Colonial Revival style (more specifically, Georgian Revival). House form is a large, three-bay, double-pile, nearly square rectangle, two storeys in height over a partial basement. A single-storey brick addition plus a porch (partially enclosed) were built across the rear not long after the main house was constructed. Construction is brick without bonding on the facade, and with American bond every sixth row elsewhere. Mortar joints are painted brick red with a finer, simulated joint painted over. Roof is gable covered with standing-seam tin. A small center gable with cornice returns supported on two-storey brick pilasters with moulded terra cotta capitals frame the center bay. A fine wood cornice, with cornice returns at the gables, trims the aves: facade cornice has dentils. Rain guttering is concealed behind the cornice. Two interior end chimneys are located in each gable end. Facade windows are one-over-one-light, sash type with rubbed brick jack arches. A large Palladian window with triple-hung center window and double-hung, leaded stained glass side windows is centered on the second floor facade. Side and rear windows are two-over-two-light sash with segmented arches. Two smaller attic windows in each gable end are round-head. The central main entrance is through double, full-length-glass panel doors flanked by pressed-pattern glass side lights above wood panels. Thin, fluted Tuscan pilasters separate doors from side lights; and similar but sturdier pilasters frame the entryway and support a semi-elliptical transom light of leaded glass. A single-story, flat-roof portico covers the central bay.

HISTORICAL DESCRIPTION

Tax records would seem to indicate that the present house was constructed in 1900 by John L. Walters. The house stands on lot #2 of the Albemarle Military Institute, operated on the site from 1856-1860 by Col. John Bowie Strange. Lot #2 was the site of the original school house. The property had been purchased from Strange by R.F. Omohundro (no deed, see Co. DB70-322) and then had passed to Augustus Bodeker (Co. DB60-11, DB60-15) who subdivided in 1874. The Walters family (Mrs. Mildred Walters) purchased the lot in 1879 (Co. DB75-166). The house was a Wheeler family home from 1915 (City DB28-10) to 1946 (City DB129-302) when it sold to M. Lavelle King. The present owner purchased the property in 1955 (City DB188-225) and presently operates the Ferguson Funeral Home therefrom. (See also City DB31-99, DB73-188, DB74-324, DB123-293, DB181-143, DB351-338.)

GRAPHICS

CONDITIONS

Excellent

SOURCES

City and County Records

WALTERS HOUSE



STREET ADDRESS:	702 Ridge Street
MAP & PARCEL:	25-65
VDHR FILE NUMBER:	104-25-42
CITY FILE NUMBER:	188
PRESENT ZONING:	R-3
ORIGINAL OWNER:	John L. Walters
ORIGINAL USE:	Residence
PRESENT USE:	Funeral Home
PRESENT OWNER:	Bernice C. Ferguson
ADDRESS:	702 Ridge Street Charlottesville, VA 22903
HISTORIC NAME:	Walters House
DATE/PERIOD:	1900
STYLE:	Colonial Revival
HEIGHT IN STORIES:	2
DIMENSIONS AND LAND AREA:	40,000 sq. ft.
CONDITION:	Good
SURVEYOR:	Thomsen
DATE OF SURVEY:	1977, Revised 1993
SOURCES:	City County Records

WALTERS HOUSE

ARCHITECTURAL DESCRIPTION

702 Ridge Street is a fine example of early Colonial Revival style. It is a large, three-bay, double-pile, nearly rectangular form, two storeys in height over a partial basement. A single-storey brick addition plus a porch (partially enclosed) were built across the rear not long after the main house was constructed. Construction is brick with common bond on the facade, and seven-course American bond elsewhere. Mortar joints are painted brick red with a finer, simulated joint painted over. The gable roof is covered with standing-seam tin. A small center gable with cornice returns supported on two-storey brick pilasters with moulded terra cotta capitals frame the center bay. A fine wood cornice, with cornice returns at the gables, trims the eaves; facade cornice has dentils. Gutters are concealed behind the cornice. Two interior end chimneys are located in each gable end. Facade windows are one-over-one-light, sash type with rubbed brick jack arches. A large Palladian window with triple-hung center window and double-hung, leaded stained-glass side windows is centered on the second-floor facade. Side and rear windows are two-over-two-light sash with segmented arches. There are two smaller round-headed attic windows in each gable end. The central main entrance is through double, full-length-glass panel doors flanked by pressed-pattern glass sidelights above wood panels. Thin, fluted Tuscan pilasters separate doors from sidelights; and similar but sturdier pilasters frame the entryway and support a semi-elliptical transom of stained glass. A single-storey, flat-roof portico covers the central bay.

HISTORICAL DESCRIPTION

Tax records would seem to indicate that the present house was constructed in 1900 by John L. Walters. The house stands on lot #2 of the Albemarle Military Institute, operated on the site from 1856-1860 by Col. John Bowie Strange. Lot #2 was the site of the original schoolhouse. The property had been purchased from Strange by R.F. Omohundro (no deed, see ACDB 70-322) and then had passed to Augustus Bodeker (ACDB 60-11, DB 60-15) who subdivided in 1874. The Walters family (Mrs. Mildred Walters) purchased the lot in 1879 (Co. DB 75-166). The house was a Wheeler family home from 1915 (City DB 28-10) to 1946 (City DB 129-302) when it sold to M. Lavelle King. The Fergusons purchased the property in 1955 (City DB 188-225) and presently operate the Ferguson Funeral Home thereafter.

See Also: City DB 31-99, DB 73-188, DB 74-324, DB 123-293, DB 181-143, DB 351-338).

STATEMENT OF SIGNIFICANCE

This handsome Colonial Revival house and its spacious yard appear always to have been well cared for. Notable features include pilasters, rubbed brick arches, an ornately detailed front entrance, and a Palladian window with leaded stained glass. It is important to the streetscape and to the Ridge Street Historic District.

VDHR Reconnaissance Survey Form

VIRGINIA DEPARTMENT OF HISTORIC RESOURCES
PROPERTY SURVEY FORM
RECONNAISSANCE LEVEL

IDENTIFICATION INFORMATION

VDHR File # 104-0025-042

Property Name: Historic Walters House

NR Property Category: Building
Wuzit: Funeral Home

Tax Code: Section Parcel
25 65

County/City: Charlottesville (City)

USGS Map: USGS Quad: Charlottesville East

ADDRESS/LOCATION INFORMATION

Address: 702 Ridge Street

Location:

Vicinity of: Municipality: ZIP: 22901

PROPERTY CLASSIFICATION INFORMATION

Property Boundaries:
Ownership: Private

RESOURCE COUNT -

#	Category	Contributing?	TOTAL:	
1	Building	Contributing	1	
			Contrib:	1
			Non-Contrib:	0

WUZIT COUNT -

#	Wuzit	Contributing?	TOTAL:	
1	Funeral Home	Contributing	1	
			Contrib:	1
			Non-Contrib:	0

RESOURCE - GENERAL DESCRIPTIVE INFORMATION

Resource Level:
 Estimated Construction Date: 1900
 Source of Date: Tax Records
 Physical Status: Existing
 Condition: Good
 Threat: None Known
 Degree of Historic Integrity:
 Association:
 Design:
 Feeling:
 Location:
 Materials:
 Setting:
 Workmanship:

PRIMARY RESOURCE RECONNAISSANCE DESCRIPTION

Architectural Style/Derivative: Colonial Revival

of Stories: 2.0 # of Bays Wide: 3 # of Bays Deep: 2
 Arch Config: Geo Config:
 Footprint:

Component	#	Form/Treatment	Material	Matr'l Treatment
Chimneys		Interior End	Brick	
Foundation		Partial Basement	Brick	
Porch		Front	Wood	Colonial Revival
Roof		Gable	Metal	Standing seam
Windows		double-hung sash	Wood	1-over-1

Brief Architectural Description of Primary Resource:

702 Ridge Street is a fine example of early Colonial Revival style (more specifically, Georgian Revival). House form is a large, three-bay, double-pile, nearly rectangle, two storeys in height over a partial basement. A single-storey brick addition plus a porch (partially enclosed) were built across the rear not long after the main house was constructed. Construction is brick without bonding on the facade, and with American bond every sixth row elsewhere. Mortar joints are painted brick red with a finer, simulated joint painted over. Roof is gable covered with standing-seam tin. A small center gable with cornice returns supported on two-storey brick pilasters with moulded terra cotta capitals frame the center bay. A fine wood cornice, with cornice returns at the gables, trims the eaves; facade cornice has dentils. Rain guttering is concealed behind the cornice. Two interior end chimneys are located in each gable end. Facade windows are one-over-one light, sash type with rubbed brick jack arches. A large Palladian window with triple-hung center window and double-hung, leaded stained glass side windows is centered

on the second floor facade. Side and rear windows are two-over-two light sash with segmented arches. Two smaller attic windows in each gable end are round-head. The central main entrance is through double, full-length glass panel doors flanked by pressed-pattern glass side lights above wood panels. Thin, fluted Tuscan pilasters separate doors from side lights; and similar but sturdier pilasters frame the entryway and support a semi-elliptical transom light of stained glass. A single-storey, flat-roofed portico covers the central bay.

Brief Architectural Description of Additions and Alterations
The house has been turned into a funeral home by the Ferguson family.

Brief Architectural Description of Secondary Resources:

Potentially Contributes to Historic District:

Ridge Street Historic District

Potentially Associated with NR Multiple Property:

Architectural and Historical Summary:

HISTORICAL DESCRIPTION

Tax records would seem to indicate that the present house was constructed in 1900 by John L. Walters. The house stands on lot #2 of the Albemarle Military Institute, operated on the site from 1856-1860 by Col. John Bowie Strange. Lot #2 was the site of the original school house. The property had been purchased from Strange by R. F. Omohundro (no deed, see Co. DB 70-322) and then had passed to Augustus Bodeker (Co. DB 60-11, DB 60-15) who subdivided in 1874. The Walters family (Mrs. Mildred Walters) purchased the lot in 1879 (Co. DB 75-166). The house was a Wheeler family home from 1915 (City DB 28-10) to 1946 (City DB 129-302) when it sold to M. Lavelle King. The Fergusons purchased the property in 1955 (City DB 188-225) and presently operate the Ferguson Funeral Home therefrom.

See Also: City DB 31-99, DB 73-188, DB 74-324, DB 123-293, DB 181-143, DB 351-338.

SIGNIFICANCE & RELATION TO EVALUATION CRITERIA

This handsome Colonial Revival house and its spacious yard appear to have been well cared for always. Notable features include pilasters, rubbed brick arches, an ornately detailed front entrance, and a Palladian window with leaded stained glass. It is important to the streetscape and to the Ridge Street Historic District.

BIBLIOGRAPHY

Type of Record	Citation
City Records	Charlottesville City Deed Book

County Records
Albemarle County Deed Books

PHOTOGRAPHIC/DRAWINGS DOCUMENTATION

=====

MISSING DATA ELEMENT

Media	VDHR Neg #	Frames	Date
B&W 35mm photos	13472	10 - 13	1/ /1994

CRM MANAGEMENT EVENTS

=====

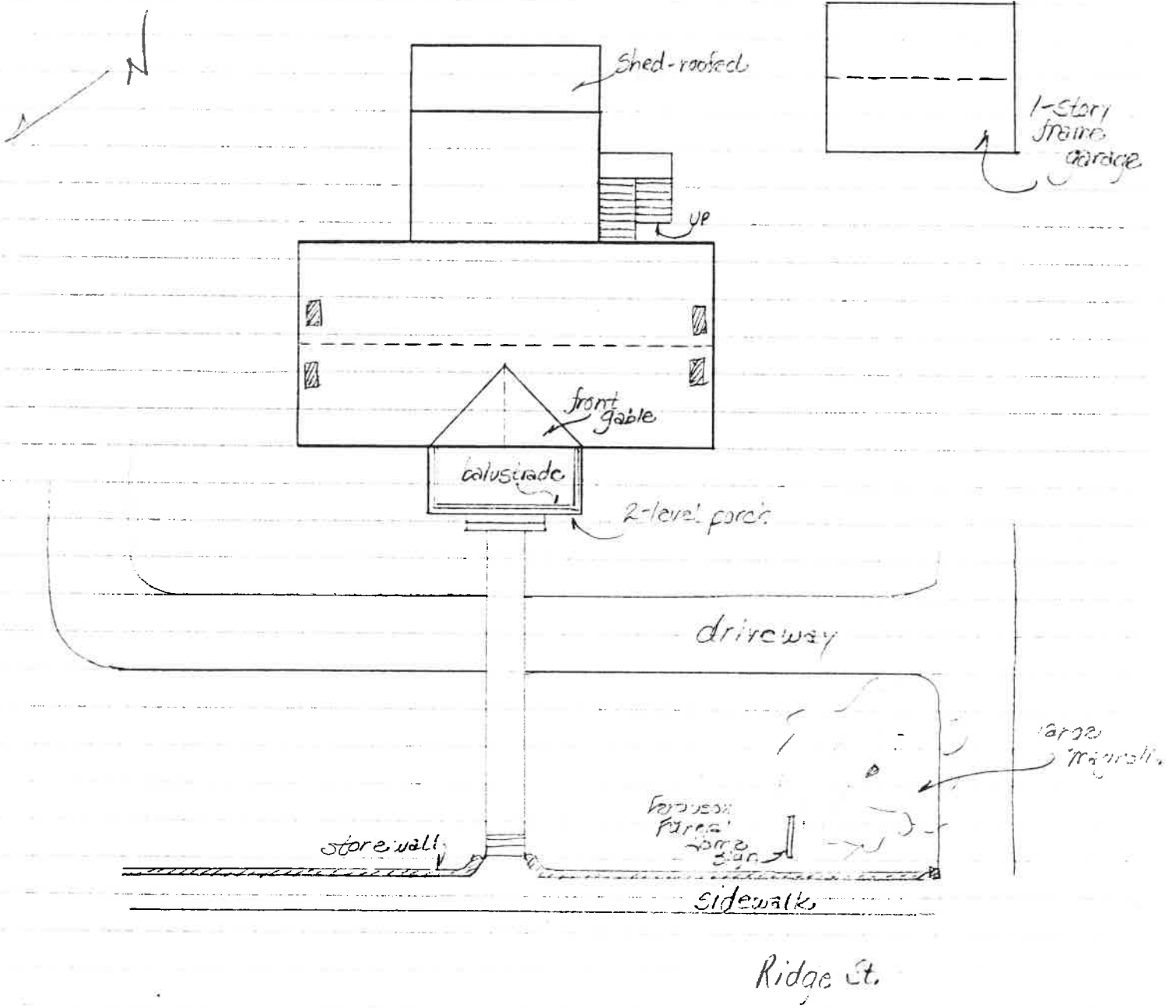
MISSING DATA ELEMENT

CRM Event	Agency/Organization	Date
Survey	PAVA/Smead and City/Bibb	/ /1977

IPS data entry-PAVA (Smead)

WALTERS HOUSE
702 RIDGE ST.

VEHICLE FILE NO. 12-25-42

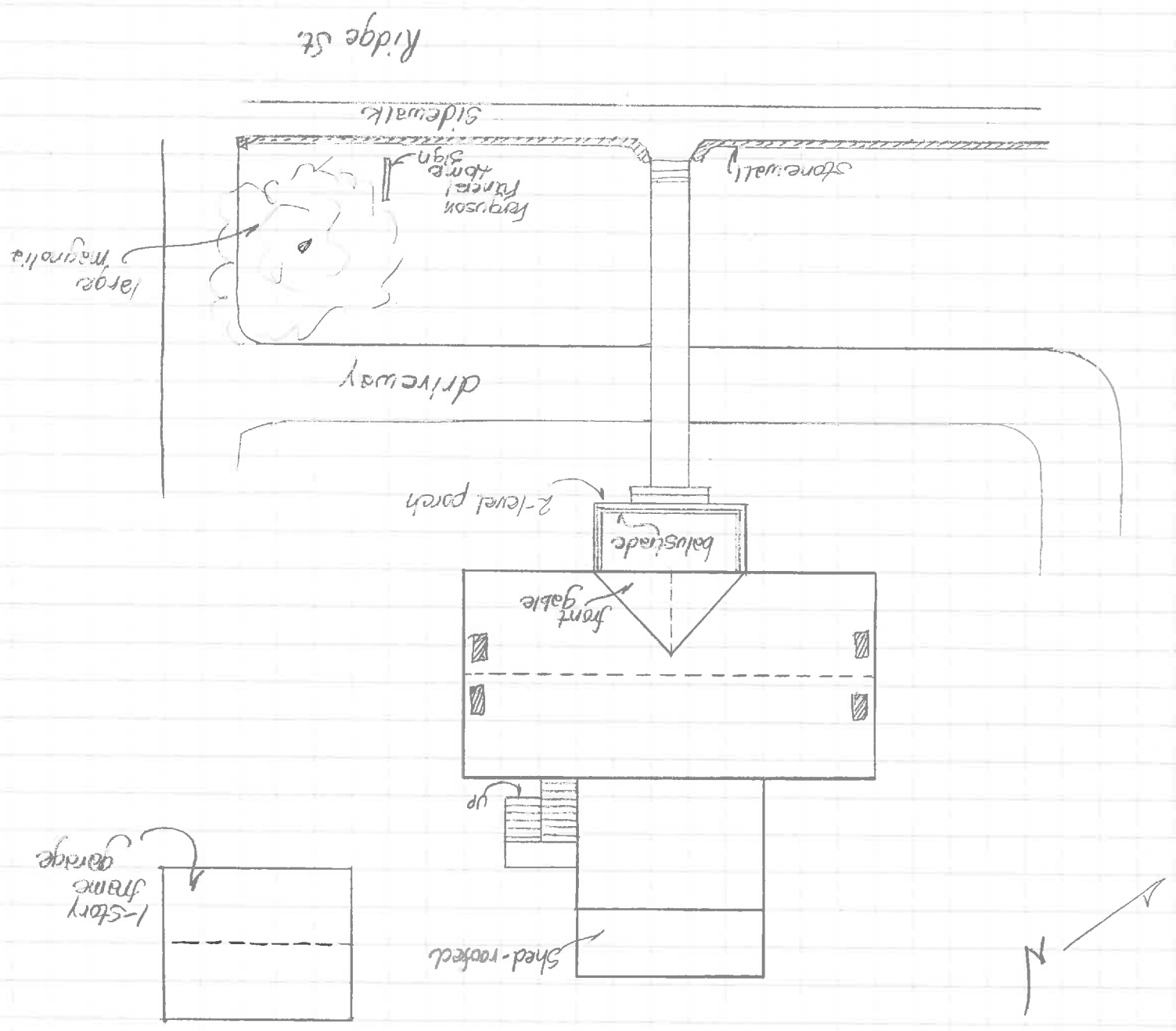


SUSAN E. SWEAD
PRESERVATION ASSOCIATES OF VIRGINIA

JANUARY 1999

WALTERS HOUSE
702 RIDGE ST.

VDHR FILE NO. 104-25-42



SUEAN F. SMEAD
PRESERVATION ASSOCIATES OF VIRGINIA
JANUARY 1994

over square wood panels. Thin, fluted Tuscan pilasters separate doors from side lights; and similar but sturdier pilasters frame the entryway and support a semi-elliptical transom light of leaded glass. A single-storey, flat-roof portico covers the central bay. The roof is surrounded by a low balustrade (with slab balusters) supported between pedestals. Pedestals, also holding a balustrade, support Tuscan columns that carry the roof and its simple entablature.

ARCH

702 Ridge Street is a fine example of early Colonial Revival style (more specifically, Georgian Revival). House form is a large, three-bay, double-pile, nearly square rectangle, two storeys in height over a partial basement. A single-storey brick addition plus a porch (partially enclosed) were built across the rear, not long after the main house was constructed. Construction is brick without bonding on the facade, and with American bond every sixth row elsewhere. Mortar joints are painted brick red with a finer, simulated joint painted over. Roof is gable covered with standing-soam tin. A small center gable with cornice returns supported on two-storey brick pilasters with moulded terra cotta capitals frames the center bay. A fine wood cornice, with cornice returns at the gables, trims the eaves: facade cornice has dentils. Rain guttering is concealed behind the cornice. Two interior end chimneys are located in each gable end. Facade windows are one-over-one-light, sash type with rubbed brick jack arches. A large palladian window with triple-hung center window and double-hung, leaded stained-glass side windows is centered on the second floor facade. Side and rear windows are two-over-two-light sash with segmental arches. Two smaller attic windows in ^{each} gable end are round-head. The central main entrance is through double, full-length-glass-panel doors flanked by pressed-pattern glass side lights.

FERGUSON FUNERAL HOME 702 RIDGE ST.

25-65

Pres. Owner

George R + Bernice C Ferguson DB 351-338 Covenant
702 Ridge St. DB 188-224

Frank L. Henderson DB 181-143

Lavelle M King DB 129-302

Nannie F. Wheeler.

			land	12530
			imp	27900
			total	40430
lot size	front	Depth		
	147	x 150		

A16 6.

DB 75-166, 1 Sep 1879

fr. Augustus Bodeker + Ann Whitehead Bodeker (ms)
+ Charles H. Harman
to Mildred Walters

147x371' 1 1/4 a

N. of ~~Mentoria~~ Flag House + School House

IMP!!

DB 70-322 2 Aug 1875

Above deed mentions this as put "Conveyed
unto said Augustus Bodeker by the deed of
R.F. Omohundro + others dated Second day of
August 1875

SEE 632 RIDGE

See DB 60-11, 13 Oct 1862

fr. R.F. Omohundro + Margaret (ms)
to A Bodeker.

DB 59-684

fr. Omohundro
to Wm A Hoppe

2a
1 1/4 a
4 1/2
3 1/4 a
1 1/4 a

DB 61-41

fr. Omohundro
to Andrew Sample Tr for Mrs Margaret B Booth
v. a.

DB 73-188, 4 May 1931

fr. George Gilmer + John S. Graves Trustees
to B.E. Wheeler, Jr.
702 Ridge St.

DB 31-99, 27 Oct 1917, and 28 Nov 1917 D/T

fr. B.E. Wheeler + Lonie B. wife
to John S. Graves + George Gilmer, Trustees
702 Ridge

DB 28-10, 26 Oct 1915, and 3 Nov 1915

fr. M.W. Farnas, John L. Walters, Jr. & E. Irene (wid)
Lottie E. Osterman + G.H. (wid) (widow + children of
John L. Walters, dec'd).

to B.E. Wheeler

* ~~702~~ lot w/ dwellinghouse thereon on Ridge St.

DB 5-315, 25 Sep 1894, 19 Nov 1894

fr. Mildred Walters
to John L. Walters.

~~Oct 1915 (as of)~~

Desc: "~~... and The Flag House and School-house
pulled down~~".

DB 188-224, 22 Nov 1955

Fr. Frank L. Herndon + Effie E. (ux)
+ S.V. Lancaster and Lucille P. (ux)
to George R. Ferguson + Bernice C. (ux)

147 x 371

702 Ridge St. + 20' R/W CDB 33-22

DB 181-143, 21 Dec 1954

fr. M. Lavelle King, widow
to Frank L. Herndon + S.V. Lancaster
702 Ridge

DB 129-302, 29 Nov 1946, recd 3 Dec 1946

fr. Nannie F. Wheeler + B. Ernest, Jr. (wid)
to M. Lavelle King
702 Ridge.

DB 123-293, 20 Jun 1946

fr. Harry W. Wheeler
to Nannie F. Wheeler
702 Ridge St.

DB 74-324, 25 July 1931, recd 9 Oct 1931

fr. B.E. Wheeler, Jr. ~~for~~
to Herman S. Wheeler + Harry W. Wheeler.
702 Ridge St.

- Roof - standing-seam tin
 gable ends w/ smaller front center gable
 Fine wood cornice, w/ dentils on facade, without
 on rear. Cornice returns
 Rain guttering concealed behind + above
 cornice.

Doorway - Double, full-length glass panel
 doors, long side lights of pressed pattern
 glass above square panels, separated from
 doorway by attenuated, fluted doric pilasters
 Elliptical arch light of leaded glass covers
 door + side lights + is supported on sturdy, fluted
 doric pilasters.

single storey

Porch - a squared, fairly deep portico covers
 the door + central bays. Porch roof is
 flat, surrounded by a low balustrade supported
 betw. pedestals. Classical cornice w/ dentils.
 roof supported on ^{small} doric columns on pedestals,
 between which run balustrades.
 (Balustrades have simple, flat slat balusters.
 New concrete floor + stairs to portico.)

Rear additions include 1 storey brick section across
 back, + enclosed porch. 1 room second
 storey addition recent.

Ferguson

House like 702 off 2^{1/2} St

Car owner supposed to have committed
suicide

702 Ridge

1901

+ \$200

(w. \$1200 to \$2000)

for Impts

702 Ridge St. (Super fine)

3 bay, double-pile, center hall 4 on 4 plan

2 story w partial basement + full attic

4 interior end chimneys

w/ moulded terra
cotta capitals.

Facade - center bay defined by brick pilasters
and surmounted by gable w/ cornice returns in
suggestion of a pediment.

Windows -

facade side bays: 1 over 1 light, upstairs are
5 brick courses less in height
Brick jack arches w moulded
crown across top of jack arch

center: upstairs - palladian window w 1 over 1
light sash surmounted by round top sash
of leaded glass in center panel
side panels 1 over 1 light sash of
intricately leaded stained glass.

sides: two windows each floor, spaced toward center.

2 over 2 light segmental arches of two header rows w/a third
projecting row as crown.

two small round head 1 over 1 light attic
windows in each side; arch of ^{1st} headers crowned
by 2 projecting row

Brick work - Facade - no bond, sides + rear common
header bond every 6th row. Mortar joints painted
brick red, with simulated narrower joint imposed

HISTORY

Tax records would seem to indicate that the present house was constructed in 1900 by John L. Walters. The house stands on lot # 2 of the Albemarle Military Institute, operated on the site from 1856-60 by Col. John Bowie Strange. Lot # 2 was the site of the original School House. The property had been purchased from Strange by R.F. Omohundro (no deed, see Co. DB 70-322) and then had passed to Augustus Balaker (County DB 60-11, DB 60-15) who subdivided in 1874. The Walters family (Mrs. Mildred Walters) purchased the lot in 1879 (Co. DB 75-166). The house was a Wheeler family home from 1915 (City DB 28-10) to 1946 (City DB 129-302) when it sold to M. Lavelle King. The present owner purchased the property in 1955 (City DB 198-225) and presently operates the Ferguson Funeral Home therefrom. (See also City DB 31-99, DB 73-188, DB 74-324, DB 123-293, DB 181-143, DB 351-338.)



Date ~~1994~~ JAN 1994 File No. 104-25-42

Name WALTERS HOUSE, 702 RIDGE STREET

Town CHARLOTTESVILLE

County _____

Photographer ANN C. HUPPERT

Contents 3 EXT. VIEWS OF HOUSE, 1 OF

OUTBUILDING