

Architectural And Historic Survey

Identification

STREET ADDRESS: 1314 Rugby Road	HISTORIC NAME: Four Acres
MAP & PARCEL: 38-92	DATE / PERIOD: 1910
CENSUS TRACT AND BLOCK:	STYLE: Colonial Revival
PRESENT ZONING: R-1	HEIGHT (to cornice) OR STORIES: 2½ storeys
ORIGINAL OWNER: Melton C. and Lucy Cocke Elliot	DIMENSIONS AND LAND AREA: 246,265 sq. ft.
ORIGINAL USE: Residential	CONDITION: Excellent
PRESENT USE: Residential	SURVEYOR: _____/Bibb
PRESENT OWNER: Caroline Camp Sherman	DATE OF SURVEY: 1974/1985
ADDRESS: 1314 Rugby Road	SOURCES: City/County Records
Charlottesville, Virginia 22902	Dr. Hilbert H. DeLawter

ARCHITECTURAL DESCRIPTION

Four Acres is an excellent Colonial Revival two story brick house on a slightly raised basement and a large four columned portico. Although built in 1910, much older construction methods were used. The interior beams and supports are hand hewn, many nails were hand forged, and the house is constructed of hand-made bricks. The building is three bays in length and three smaller bays in width. This large rectangular block is basically symmetrical with, however, some difference in window sizes, unevenly spaced chimneys and a brick kitchen wing on one side. In the back, the windows, although two-sash, are floor length. All the windows have stone lintels with a keystone design. There are one story porches on either side and a large two story Ionic columned pedimented portico in front with large dentiled cornice details that also extend around the house. There is a steep hipped slate roof with pedimented dormers. The interior does not follow a symmetrical central entrance hall plan, but has a large reception hall and stair hall running two thirds the length of the front of the house. The large central portico door with an elliptical fan light over it and the side lights was copied in the side entrance door at the end of the hall, replacing a previous door. There were some renovations in the 1920's and Admiral Halsey removed the side porch roof deck railings for use on top of a garage he added, since removed. Mrs. Case made alterations including an elevator, also removed by the DeLawters, who conducted extensive renovation work. Hardware was changed from glass knobs to brass and glass doors inside replaced with solid ones. Marble fireplace facings were installed.

HISTORICAL DESCRIPTION

Four Acres takes its name from the surrounding tract of land that has remained with the house since it was built by Lucy Cocke Elliot. The land was part of a large tract held before 1863 by Thomas L. Preston (ACDB 60-451). In 1874 fifty some acres were deeded by the Prestons to Mason Gordon (ACDB 3 69-458). From those fifty acres Mrs. Elliot purchased over 3 acres in 1907 (ACDB 137-212). A small adjoining strip was also purchased in 1915 (ACDB 161-110) to complete the present Four Acres. Mrs. Elliot built the present house, cottage, and former stable. It was designed by Eugene Bradbury, who also designed the Elliots' Washington Town House, and was intended as a summer residence. A furnace was added for permanent residence in 1911. In 1919 the house was sold to Julia Reynolds Austen (ACDB 170-354) who held it until 1941. It was then sold to Lillian P. Edwards (DB 108-94) who left it to the University of Virginia in 1947 (DB 133-476). It was occupied for several years by Admiral Halsey and sold in 1950 (DB 150-302) to Albert and Sara Case. Hilbert H. & Loretta P. DeLawter bought it from the estate of Mrs. Case in 1972 (DB 338-286) and sold it to Caroline Camp Sherman in 1980 (Db 413-279).

SIGNIFICANCE

Designed by architect Eugene Bradbury "Four Acres" is an outstanding example of the Colonial Revival style. Admiral Halsey occupied it for several years in the late 1940's.

LANDMARK



SURVEY

IDENTIFICATION

Street Address: 1314 Rugby Road
 Map and Parcel: 38-92
 Census Tract & Block:
 Present Owner: Hilbert H. & Loretta D. De Lawter
 Address: 1314 Rugby Road
 Present Use: Residential
 Original Owner: Melton C. and Lucy Cocke Elliot
 Original Use: Residential

BASE DATA

Historic Name: Four Acres
 Date/Period: 1910
 Style: Colonial Revival
 Height to Cornice:
 Height in Stories: 2 1/2
 Present Zoning: R-1
 Land Area (sq.ft.): 246,265 sq. ft.
 Assessed Value (land + imp.): 12,300 + 26,580 = 38,880

ARCHITECTURAL DESCRIPTION

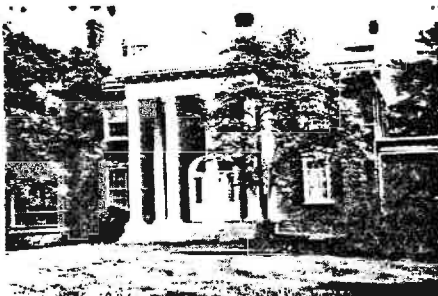
Four Acres is an excellent Colonial Revival two story brick house on a slightly raised basement and a large four columned portico. Although built in 1910, much older construction methods were used. The interior beams and support are hand hewn, many nails were hand forged and the house is constructed of hand-made bricks. The building is three bays in length and three smaller bays in width. This large rectangular block is basically symmetrical with, however, some difference in window sizes, unevenly spaced chimneys and a brick kitchen wint on one side. In the back, the windows, although two sash are floorlength. All the windows have stone lintles with a keystone design. There are one story porches on either side and a large two story ionic columned pedimented portico in front with large dentiled cornice details that also extend around the house. There is a steep hipped slate roof with pedimented dormers. The interior does not follow a symmetrical central entrance hall plan, but has a large reception hall and stair hall running two thirds the length of the front of the house. The large central portico door with an elliptical fan light over it and the side lights was copied in the side entrance door at the end of the hall replacing a previous door. There were some renovations in the 1920's and Admiral Halsey removed the side porch roof deck railings for use on top aof a garage he added, since removed. Mrs. Case made alterations including an elevator, also removed by present owners. The present owners have conducted extensive renovation work. Hardware was changed from glass knobs to brass and glass doors inside replaced with solid ones. Marble fireplace facings were installed.

HISTORICAL DESCRIPTION

Four Acres takes its name from the surrounding tract of land that has remained with the house since it was built by Lucy Cocke Elliot. The land was part of a large tract held before 1863 by Thomas L. Preston (ACDB 60-451). In 1874 fifty some acres were deeded by the Prestons to Mason Gordon (ACDB 3 69-458). From those fifty acres Mrs. Elliot purchased over 3 acres in 1907 (ACDB 137-212). A small adjoining strip was also purchased in 1915 (ACDB 161-110) to complete the present Four acres. Mrs. Elliot built the present house, cottage and former stable. It was designed by Eugene Bradbury who also designed the Elliots Washington Town House and was intended as a summer residence. A furnace was added for permanent resident in 1911. In 1919 the house was sold to Julia Reynolds Austen (ACDB 170-354) who held it until 1941. It was then sold to Lillian P. Edwards (DB108-94) who left it to the University of Va. in 1947 (DB 133-476). It was occupied for several years by Admiral Halsey and sold in 1950

(DB 150-302) to Albert and Sarah Case. The Case in 1972 (DB 338-286).

GRAPHICS present owners bought it from the estate of Mrs.



CONDITIONS

Excellent

SOURCES

Dr. Hilbert H. De Lawter
 County Records
 City Records

FOUR ACRES



STREET ADDRESS:	1314 Rugby Road
MAP & PARCEL:	38-92
VDHR FILE NUMBER:	104-217
CITY FILE NUMBER:	166
PRESENT ZONING:	R-1
ORIGINAL OWNER:	Melton C. and Lucy Cocke Elliot
ORIGINAL USE:	Residence
PRESENT USE:	Residence
PRESENT OWNER:	Caroline Camp Sherman
ADDRESS:	1314 Rugby Road Charlottesville, V A 22903
HISTORIC NAME:	Four Acres
DATE/STYLE:	1910, 1987
STYLE:	Colonial Revival
HEIGHT IN STORIES:	2 1/2 Storeys
DIMENSIONS AND LAND AREA:	246,265 sq. ft.
CONDITION:	Good
SURVEYOR:	-----/Bibb
DATE OF SURVEY:	1974/1987
SOURCES:	City/County Records Dr. Hilbert H. DeLawter

FOUR ACRES

ARCHITECTURAL DESCRIPTION

Four Acres is an excellent Colonial Revival two-story brick house on a slightly raised basement with a large four-columned portico. Although built in 1910, much older construction methods were used. The interior beams and supports are hand hewn, many nails were hand forged, and the house is constructed of hand-made bricks. The building is three bays in length and three smaller bays in width. This large rectangular block is basically symmetrical but exhibits some differences in window size, chimney spacing, and has a brick kitchen wing on one side. In the back the windows are double-sash and extend to the floor. All the windows have stone lintels with keystones. There are one-story porches on either side and a large two-story Ionic-columned, pedimented portico in front with a modillion cornice that also extend around the house. There is a steep, hipped, slate roof with pedimented dormers. The interior does not follow a symmetrical central entrance hall plan, but has a large reception hall and stair hall running two thirds the length of the front of the house. The large central portico door, with sidelights and a semi-elliptical fanlight, was copied in the side entrance door at the end of the hall, replacing a previous door. There were some renovations in the 1920's, and Admiral Halsey removed the side porch roof deck railings for use on top of a garage he added, since removed. Mrs. Case made alterations including an elevator, also removed by the DeLawters, who conducted extensive renovation work. Hardware was changed from glass to brass knobs and interior glass doors were replaced with wooden ones. Marble fireplace facings also were installed.

1987: The northern portico was removed in 1987 and replaced with a gable-roofed end pavilion.

HISTORICAL DESCRIPTION

Four Acres takes its name from the surrounding tract of land that has remained with the house since it was built by Lucy Cocke Elliot. The land was part of a large tract held before 1863 by Thomas L. Preston (ACDB 60-451). In 1874, approximately fifty acres were deeded by the Prestons to Mason Gordon (ACDB 69-458). From those fifty acres, Mrs. Elliot purchased over three acres in 1907 (ACDB 137-212). A small adjoining strip was also purchased in 1915 (ACDB 161-110) to complete the present Four Acres. Mrs. Elliot built the present house, cottage, and former stable. It was designed by Eugene Bradbury, who also designed the Elliots' Washington townhouse, and was intended as a summer residence. A furnace was added for permanent residence in 1911. In 1919 the house was sold to Julia Reynolds Austen (ACDB 170-354) who held it until 1941. It was then sold to Lillian P. Edwards (DB 108-94) who left it to the University of Virginia in 1947 (DB 133-476). It was occupied for several years by Admiral Halsey and sold in 1950 (DB 150-302) to Albert and Sara Case. Hilbert H. and Loretta P. DeLawter bought it from the estate of Mrs. Case in 1972 (DB 338-286) and sold it to Caroline Camp Sherman in 1980 (DB 413-279).

STATEMENT OF SIGNIFICANCE

Four Acres, built in 1910 in what was then the far northern suburbs of Charlottesville, is one of City's handsomest Colonial Revival mansions. It is listed individually on the National Register of Historic Places as a part of the Charlottesville Multiple Resource Area.

Designed by the distinguished Virginia architect Eugene Bradbury, it is set in a broad well-landscaped lawn. The red-brick house features a tall main block fronted by a monumental classical portico and flanked by lower wings.

While owned by the University of Virginia for several years in the late 1940's, Four Acres was occupied by Fleet Admiral William Halsey, Jr., who commanded the U.S. Third Fleet in the Pacific in World War II.

The older methods of construction used in this house increase its historical significance. It may have been the last house in Charlottesville built with hand hewn-beams, hand-made bricks, and hand-forged nails.

VDHR Reconnaissance Survey Form

VIRGINIA DEPARTMENT OF HISTORIC RESOURCES
PROPERTY SURVEY FORM
RECONNAISSANCE LEVEL

IDENTIFICATION INFORMATION

VDHR File # 104-0217-000

Property Name:
Historic/Current Four Acres

NR Property Category: Building
Wuzit: House

Tax Code: Section Parcel
=====

38 92

County/City: Charlottesville (City)

USGS Map: USGS Quad: Charlottesville East

ADDRESS/LOCATION INFORMATION

Address: 1314 Rugby Road Street

Location:

Vicinity of: Municipality: ZIP: 22903

PROPERTY CLASSIFICATION INFORMATION

Property Boundaries:
Ownership: Private

RESOURCE COUNT -

#	Category	Contributing?	

1	Building	Contributing	TOTAL: 1
			Contrib: 1
			Non-Contrib: 0

WUZIT COUNT -

#	Wuzit	Contributing?	

1	House	Contributing	TOTAL: 1
			Contrib: 1
			Non-Contrib: 0

RESOURCE - GENERAL DESCRIPTIVE INFORMATION

Resource Level:
 Estimated Construction Date: 1910
 Source of Date: Tax Records
 Physical Status: Existing
 Condition: Good
 Threat: None Known
 Degree of Historic Integrity:
 Association:
 Design:
 Feeling:
 Location:
 Materials:
 Setting:
 Workmanship:

PRIMARY RESOURCE RECONNAISSANCE DESCRIPTION

Architectural Style/Derivative: Colonial Revival

of Stories: 2.0 # of Bays Wide: 3 # of Bays Deep: 3
 Arch Config: Geo Config:
 Footprint:

Component	#	Form/Treatment	Material	Matr'l Treatment
Chimneys			Brick	
Foundation			Masonry	
Porch		Frnt. Ionic port.	Wood	
Roof		Hipped	Slate	
Windows		sash	Wood	6/6 Double-hung

Brief Architectural Description of Primary Resource:

Four Acres is an excellent Colonial Revival two-story brick house on a slightly raised basement with a large four-columned portico. Although built in 1910, much older construction methods were used. The interior beams and supports are hand hewn, many nails were hand forged, and the house is constructed of hand-made bricks. The building is three bays in length and three smaller bays in width. This large rectangular block is basically symmetrical with, however, some difference in window sizes, unevenly spaced chimneys, and a brick kitchen wing on one side. In the back, the windows, although double-sash, are floor-length. All the windows have stone lintels with keystones. There are one-story porches on either side and a large two story Ionic-columned pedimented portico in front with large dentiled cornice details that also extend around the house. There is a steep hipped slate roof with pedimented dormers. The interior does not follow a symmetrical central entrance hall plan, but has a large reception hall and stair hall running two thirds the length of the front of the house. The large central portico door, with sidelights and a

semi-elliptical fanlight, was copied in the side entrance door at the end of the hall, replacing a previous door. There were some renovations in the 1920s, and Admiral Halsey removed the side porch roof deck railings for use on top of a garage he added, since removed. Mrs. Case made alterations including an elevator, also removed by the DeLawters, who conducted extensive renovation work. Hardware was changed from glass knobs to brass and glass doors inside replaced with solid ones. Marble fireplace facings were installed. 1987: The northern portico was removed in 1987 and replaced with a gable-roofed end pavilion.

Brief Architectural Description of Additions and Alterations
See Architectural Description and Historical Description.

Brief Architectural Description of Secondary Resources:

Potentially Contributes to Historic District:

Potentially Associated with NR Multiple Property:

Architectural and Historical Summary:

HISTORICAL DESCRIPTION

Four Acres takes its name from the surrounding tract of land that has remained with the house since it was built by Lucy Cocke Elliot. The land was part of a large tract held before 1863 by Thomas L. Preston (ACDB 60-451). In 1874 fifty some acres were deeded by the Prestons to Mason Gordon (ACDB 69-458). From those fifty acres, Mrs. Elliot purchased over three acres in 1907 (ACDB 137-212). A small adjoining strip was also purchased in 1915 (ACDB 161-110) to complete the present Four Acres. Mrs. Elliot built the present house, cottage, and former stable. It was designed by Eugene Bradbury, who also designed the Elliots' Washington townhouse, and was intended as a summer residence. A furnace was added for permanent residence in 1911. In 1919 the house was sold to Julia Reynolds Austen (ACDB 170-354) who held it until 1941. It was then sold to Lillian P. Edwards (DB 108-94) who left it to the University of Virginia in 1947 (DB 133-476). It was occupied for several years by Admiral Halsey and sold in 1950 (DB 150-302) to Albert and Sara Case. Hilbert H. & Loretta P. DeLawter bought it from the estate of Mrs. Case in 1972 (DB 338-286) and sold it to Caroline Camp Sherman in 1980 (DB 413-279).

SIGNIFICANCE & RELATION TO EVALUATION CRITERIA

Four Acres, built in 1910 in what was then the far northern suburbs of Charlottesville, is one of the City's handsomest Colonial Revival mansions. It is listed individually on the National Register of Historic Places as a part of the Charlottesville Multiple Resource Area. Designed by the distinguished Virginia architect Eugene Bradbury, it is set in a broad well-landscaped lawn. The red-brick house features a tall main block fronted by a monumental classical portico and flanked by lower wings. While owned by University of Virginia for several years in the late 1940s, Four Acres was occupied by Fleet Admiral William F. Halsey, Jr., who commanded the U. S. Third Fleet in the Pacific in World War II. The older methods of construction used in this house increase its historical

significance. It may have been the last house in
Charlottesville built with hand hewn beams, handmade bricks,
and hand forged nails.

BIBLIOGRAPHY

=====
Type of Record Citation

City Records
Charlottesville City Deed Book

County Records
Albemarle County Deed Books

Interview
Dr. Hilbert H. DeLawter

PHOTOGRAPHIC/DRAWINGS DOCUMENTATION

=====
MISSING DATA ELEMENT

Media VDHR Neg # Frames Date

B&W 35mm photos 13468 32 - 37 1/ /1994

CRM MANAGEMENT EVENTS

=====
MISSING DATA ELEMENT

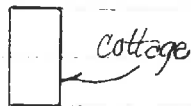
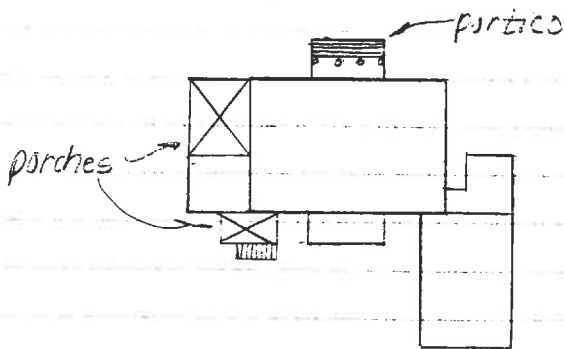
CRM Event Agency/Organization Date

Survey Community Development-Bibb/Huppert / /1974
 IPS data entry-PAVA (Smead)

FOUR ACRES
1314 RUGBY RD.

NDRP FILE NO. 104-217

Rugby Road



ANN HUPPERT
CITY OF CHARLOTTESVILLE, COMMUNITY DEVELOPMENT
SUEAN E. SMEAD
PRESERVATION ASSOCIATES OF VIRGINIA

JANUARY 1994

VDHR Reconnaissance Survey Form

VIRGINIA DEPARTMENT OF HISTORIC RESOURCES
 PROPERTY SURVEY FORM
 RECONNAISSANCE LEVEL

IDENTIFICATION INFORMATION

VDHR File # 104-0217-000

Property Name:
 Historic/Current Four Acres

NR Property Category: Building
 Wuzit: House

Tax Code: Section Parcel
 =====
 38 92

County/City: Charlottesville (City)

USGS Map: USGS Quad: Charlottesville East

ADDRESS/LOCATION INFORMATION

Address: 1314 Rugby Road Street

Location:

Vicinity of: Municipality: ZIP: 22903

PROPERTY CLASSIFICATION INFORMATION

Property Boundaries:
 Ownership: Private

RESOURCE COUNT -

#	Category	Contributing?	

1	Building	Contributing	TOTAL: 1
			Contrib: 1
			Non-Contrib: 0

WUZIT COUNT -

#	Wuzit	Contributing?	

1	House	Contributing	TOTAL: 1
			Contrib: 1
			Non-Contrib: 0

RESOURCE - GENERAL DESCRIPTIVE INFORMATION

Resource Level:
 Estimated Construction Date: 1910
 Source of Date: Tax Records
 Physical Status: Existing
 Condition: Good
 Threat: None Known
 Degree of Historic Integrity:
 Association:
 Design:
 Feeling:
 Location:
 Materials:
 Setting:
 Workmanship:

PRIMARY RESOURCE RECONNAISSANCE DESCRIPTION

Architectural Style/Derivative: Colonial Revival

of Stories: 2.0 # of Bays Wide: 3 # of Bays Deep: 3
 Arch Config: Geo Config:
 Footprint:

Component	#	Form/Treatment	Material	Matr'l Treatment
Chimneys			Brick	
Foundation			Masonry	
Porch		Frnt. Ionic port.	Wood	
Roof		Hipped	Slate	
Windows		sash	Wood	6/6 Double-hung

Brief Architectural Description of Primary Resource:

Four Acres is an excellent Colonial Revival two-story brick house on a slightly raised basement with a large four-columned portico. Although built in 1910, much older construction methods were used. The interior beams and supports are hand hewn, many nails were hand forged, and the house is constructed of hand-made bricks. The building is three bays in length and three smaller bays in width. This large rectangular block is basically symmetrical with, however, some difference in window sizes, unevenly spaced chimneys, and a brick kitchen wing on one side. In the back, the windows, although double-sash, are floor-length. All the windows have stone lintels with keystones. There are one-story porches on either side and a large two story Ionic-columned pedimented portico in front with large dentiled cornice details that also extend around the house. There is a steep hipped slate roof with pedimented dormers. The interior does not follow a symmetrical central entrance hall plan, but has a large reception hall and stair hall running two thirds the length of the front of the house. The large central portico door, with sidelights and a

semi-elliptical fanlight, was copied in the side entrance door at the end of the hall, replacing a previous door. There were some renovations in the 1920s, and Admiral Halsey removed the side porch roof deck railings for use on top of a garage he added, since removed. Mrs. Case made alterations including an elevator, also removed by the DeLawters, who conducted extensive renovation work. Hardware was changed from glass knobs to brass and glass doors inside replaced with solid ones. Marble fireplace facings were installed. 1987: The northern portico was removed in 1987 and replaced with a gable-roofed end pavilion.

Brief Architectural Description of Additions and Alterations
See Architectural Description and Historical Description.

Brief Architectural Description of Secondary Resources:

Potentially Contributes to Historic District:

Potentially Associated with NR Multiple Property:

Architectural and Historical Summary:

HISTORICAL DESCRIPTION

Four Acres takes its name from the surrounding tract of land that has remained with the house since it was built by Lucy Cocke Elliot. The land was part of a large tract held before 1863 by Thomas L. Preston (ACDB 60-451). In 1874 fifty some acres were deeded by the Prestons to Mason Gordon (ACDB 69-458). From those fifty acres, Mrs. Elliot purchased over three acres in 1907 (ACDB 137-212). A small adjoining strip was also purchased in 1915 (ACDB 161-110) to complete the present Four Acres. Mrs. Elliot built the present house, cottage, and former stable. It was designed by Eugene Bradbury, who also designed the Elliots' Washington townhouse, and was intended as a summer residence. A furnace was added for permanent residence in 1911. In 1919 the house was sold to Julia Reynolds Austen (ACDB 170-354) who held it until 1941. It was then sold to Lillian P. Edwards (DB 108-94) who left it to the University of Virginia in 1947 (DB 133-476). It was occupied for several years by Admiral Halsey and sold in 1950 (DB 150-302) to Albert and Sara Case. Hilbert H. & Loretta P. DeLawter bought it from the estate of Mrs. Case in 1972 (DB 338-286) and sold it to Caroline Camp Sherman in 1980 (DB 413-279).

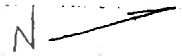
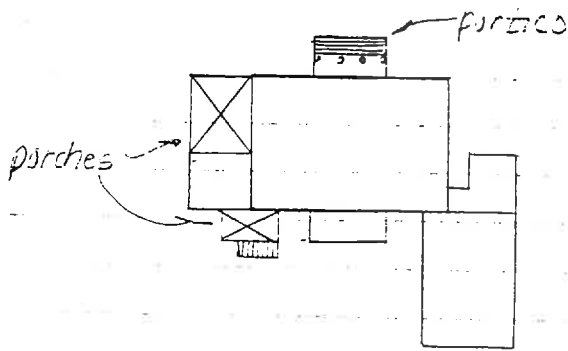
SIGNIFICANCE & RELATION TO EVALUATION CRITERIA

Four Acres, built in 1910 in what was then the far northern suburbs of Charlottesville, is one of the City's handsomest Colonial Revival mansions. It is listed individually on the National Register of Historic Places as a part of the Charlottesville Multiple Resource Area. Designed by the distinguished Virginia architect Eugene Bradbury, it is set in a broad well-landscaped lawn. The red-brick house features a tall main block fronted by a monumental classical portico and flanked by lower wings. While owned by University of Virginia for several years in the late 1940s, Four Acres was occupied by Fleet Admiral William F. Halsey, Jr., who commanded the U. S. Third Fleet in the Pacific in World War II. The older methods of construction used in this house increase its historical

FOUR ACRES
1314 KUGEY RD.

NCHD FILE NO. 104-217

Puget Road



ANN HUPPERT
CITY OF CHARLOTTESVILLE COMMUNITY DEVELOPMENT
SUEAN E. SMEAD
PRESERVATION ASSOCIATES OF VIRGINIA

JANUARY 1992



Kington Residence
1314 Rugby Road
Charlottesville, Virginia

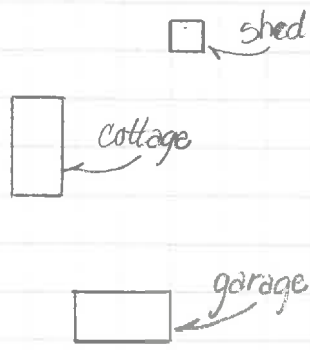
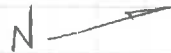
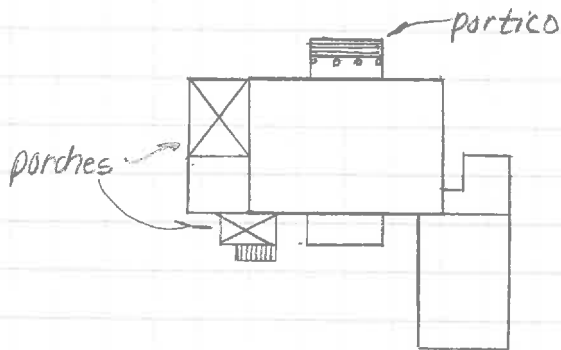
existing conditions
view from north



FOUR ACRES
1314 RUGBY RD.

VDHR FILE NO. 104-217

Rugby Road



ANN HUPPERT
CITY OF CHARLOTTESVILLE COMMUNITY DEVELOPMENT
SUSAN E. SMEAD
PRESERVATION ASSOCIATES OF VIRGINIA

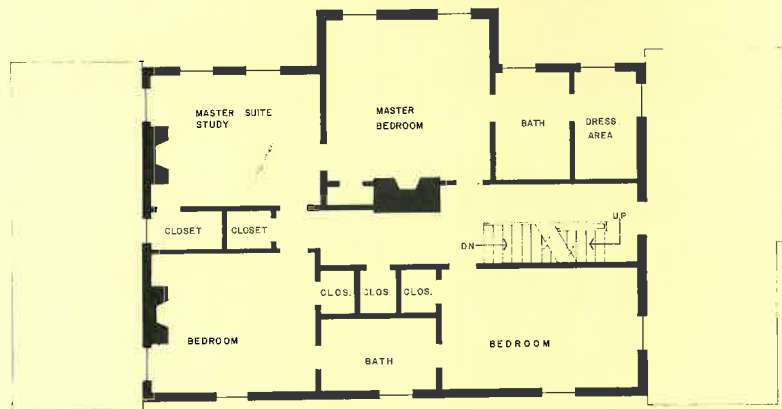
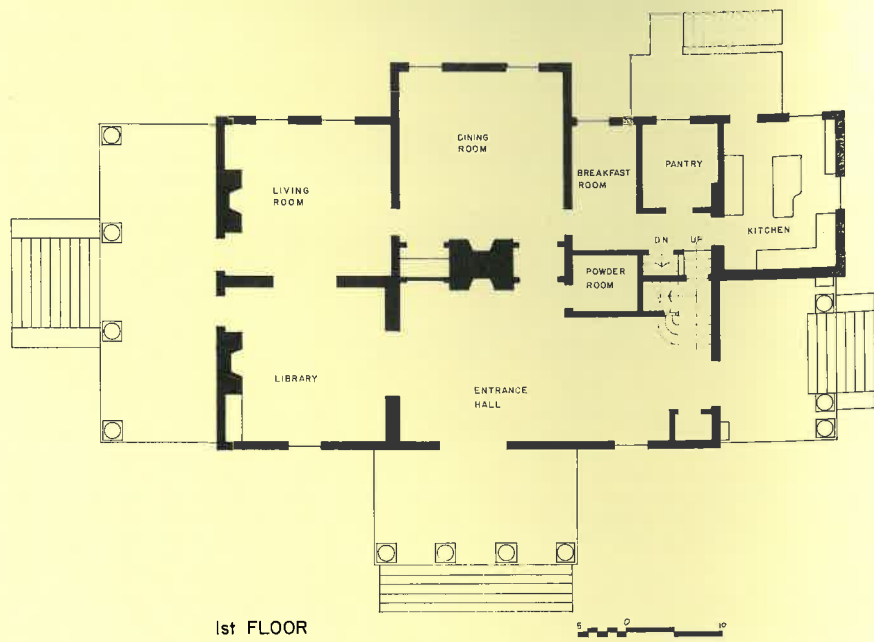
JANUARY 1994



TAXES: \$2102.40



Four Acres



PRICE: \$375,000.00

All information regarding property is from sources deemed reliable and it is submitted subject to errors, omissions, change of price, prior sale, or withdrawal without notice.

HISTORIC VIRGINIA

R. I. M. INSTITUTION • F. & L. INSTITUTE • NATIONAL ASSOCIATION OF REALTORS • AMERICAN CHARTERED INTERNATIONAL REAL ESTATE FEDERATION • METROPOLITAN WASHINGTON AND VIRGINIA REAL ESTATE EXCHANGE • REAL ESTATE NATIONAL EDUCATION INSTITUTE • VIRGINIA REAL ESTATE

<p>FARM & ESTATE DEPT.</p> <p>FRANK J. QUAYLE STEPHEN T. McLEAN JOHN J. RADY J. BYTON BRADSHAW MRS. ROY WHEELER WARD R. REISS WILLIAM C. JOHNSON RICHARD J. AUBREY, JR. RON MORLEY</p> <p>WARRENTON, VA BERNARD DAHLGREN PEGGY CARE JEAN LILLARD PERCY MELVILLE</p>		<p>RESIDENTIAL DEPT.</p> <p>WILLIAM M. LEACH DAVID S. CALLAGHAN CHRISTOPHER A. GEORGES SAMUEL WELLS MARION WOOTEN J. WALKER TAYLOR, JR. RONALD E. MORGAN LEE DEL GRECO WOOD GRACE MAILLOUX LAWRENCE H. GARDNER II P. HUNTER FALCONER, JR. BROOKE N. TAYLOR BOBBY HACKEN PATRICK L. BURNS KATHYAN R. WETTERMAN GEORGE W. BOSTON</p>
--	--	---

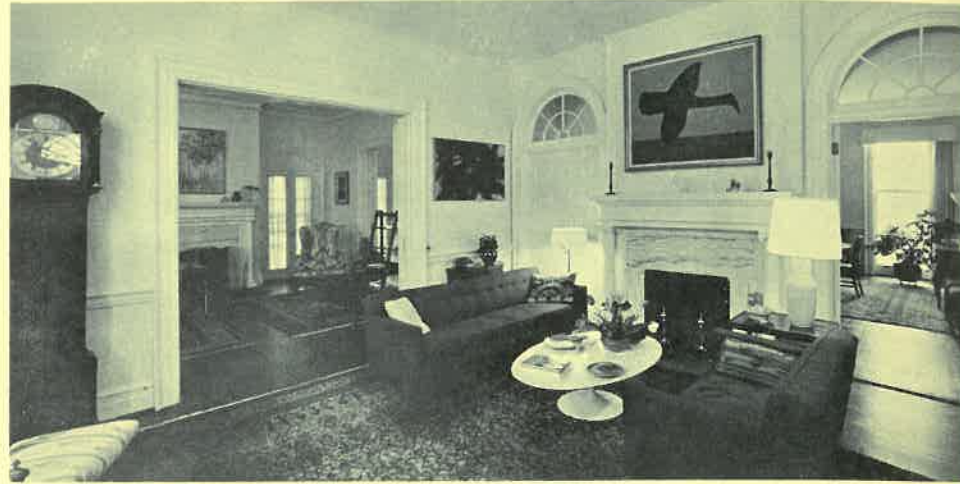
(Zip Code 22901) 401 EAST HIGH STREET ••• PHONE 296-4171 (Area Code 804)

"SERVICE IS OUR MOST IMPORTANT PRODUCT"

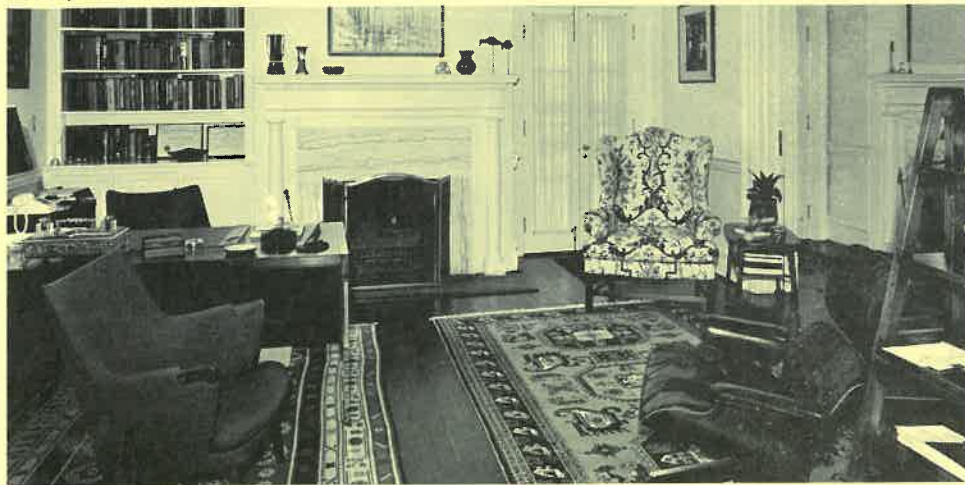
Four



Reception Hall



Sitting Area



Library



Parlor



Dining Room



Kitchen

Situated on historic Rugby Road, this is one of the finest of Charlottesville's residential classic examples of Colonial Revival architecture and beautifully landscaped setting. The choice of formal or casual living is a driving distance of city schools, shopping, business district, Court Square, and athletic offerings of Mr. Jefferson.

Although built in 1910, many of the original materials were used. The interior beams and many nails were hand forged and the walls are made of hand-made bricks. In keeping with the tradition of homes in Charlottesville in the early 20th century, the architect, Eugene Bradbury, stressed the discipline of symmetrical and balanced design.

Aside from the architectural details, the house has a spacious lawn and private garden, a large storage shed, and a garage. The main structure, containing two fireplaces, has a slate roof, all-weather central air, and is serviced by modern electrical, television and telephone.

As a result of this dedication to historic preservation because of the extensive renovation by its present owners in 1972, the house is now a part of being designated an Historic Residential Community Development of Charlottesville.

Four Acres

Historic Rugby Road 1.3 miles from the Virginia's Rotunda "Four Acres" represents the Charlottesville's residential offerings. Combining the Colonial Revival Architecture with a private landscaped setting, this classic home offers the opportunity for casual living within convenient walking distance of city schools, shopping areas, downtown Charlottesville, Court Square and the cultural, educational and recreational activities of Mr. Jefferson's University.

Completed in 1910, much older construction methods were used. Interior beams and supports were hand hewn, hardware hand forged and the house was constructed of brick and stone. In keeping with the Colonial Revival style of Charlottesville in the first third of this century, the architect, the Bradbury, sought to return to the order and symmetry of the symmetrical and geometric Georgian design.

For the architectural merits of the main house, its landscaped grounds and private gardens, this offering features a well equipped garage shed, and a three room brick guest cottage. The main house, containing fifteen rooms and eight bathrooms, has a slate roof, all copper plumbing, two furnaces, and is serviced by underground cable for its television, telephone and telephone wiring.

Due to this dedication to workmanship and design and the extensive renovation and interior modernization completed by the owners in 1972, "Four Acres" has the distinction of being designated an Historic Landmark by the Department of Historic Landmarks of Charlottesville in 1976.



Master Bedroom



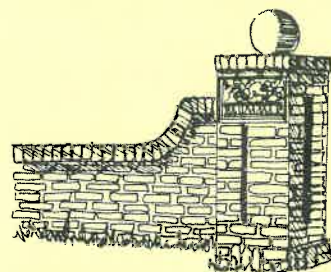
Guest Room



2nd Floor Hallway



Master Study



Guest Cottage

