

Scala, Mary Joy

From: Scala, Mary Joy
Sent: Friday, February 26, 2016 8:02 AM
To: 'Rich Baker'
Cc: Vineyard, William
Subject: RE: Any News?

Rich,
I just received the 5th positive vote, so you are approved to substitute the metal for the composite on the last 4 panels to the south (8 feet).

Mary Joy Scala, AICP

Preservation and Design Planner
City of Charlottesville
Department of Neighborhood Development Services
City Hall - 610 East Market Street
P.O. Box 911
Charlottesville, VA 22902
Ph 434.970.3130 FAX 434.970.3359
scala@charlottesville.org

From: Rich Baker [<mailto:rich@commonwealthskybar.com>]
Sent: Thursday, February 25, 2016 4:56 PM
To: Scala, Mary Joy
Subject: Any News?

Hi Mary Joy:

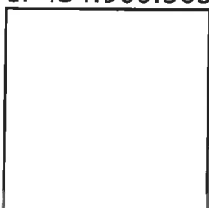
I wanted to follow up and see if you had any success with your group on the metal vs. plastic last 8' decision?

Signed:
Hopeful in Charlottesville.

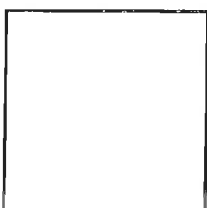
--

Rich Baker

commonwealthSKYBAR
422 East Main St., Charlottesville, VA 22902
commonwealthskybar.com
e: rich@commonwealthskybar.com
w: 434.202.7728
c: 434.960.5638



[Facebook](#)



[Twitter](#)

Scala, Mary Joy

From: Scala, Mary Joy
Sent: Monday, February 22, 2016 3:51 PM
To: BAR
Subject: 422 E Main Street Skybar
Attachments: SKM_C554e16022215480.pdf

Due to a Building Code requirement, the applicant is required to use a material other than the approved polycarbonate at least 6 feet from the adjacent wall because it contains a door. May I approved administratively a change in the last 4 panels from polycarbonate to powder-coated gray metal?

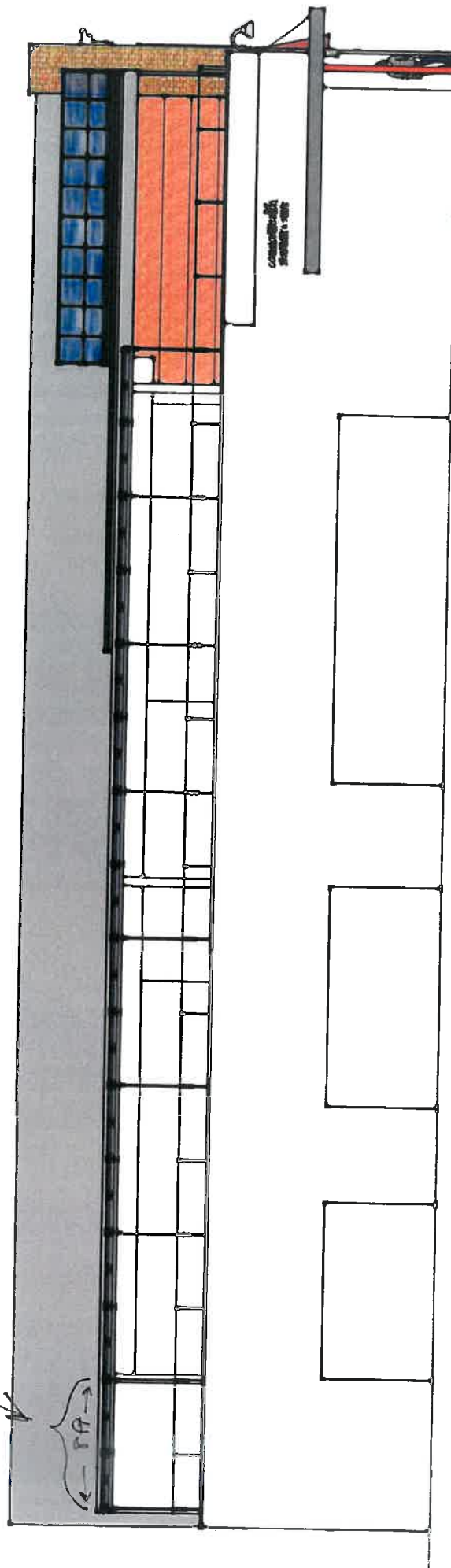
I sketched on the attached drawings to show you the location.

Mary Joy Scala, AICP

Preservation and Design Planner
City of Charlottesville
Department of Neighborhood Development Services
City Hall - 610 East Market Street
P.O. Box 911
Charlottesville, VA 22902
Ph 434.970.3130 FAX 434.970.3359
scala@charlottesville.org

From: mfdscan@charlottesville.org_ [mailto:mfdscan@charlottesville.org_]
Sent: Monday, February 22, 2016 3:49 PM
To: Scala, Mary Joy
Subject: Message from KM_C554e

Replace last 4 panels (powder-coated color of panels) with metal to match color of polycarbonate panels



Replace panels
last four



