

Scala, Mary Joy

From: Scala, Mary Joy
Sent: Monday, February 29, 2016 3:09 PM
To: Wolf, Fred
Cc: Diamond Theo
Subject: RE: Light House

The changes are approved as submitted.

Mary Joy Scala, AICP

Preservation and Design Planner
City of Charlottesville
Department of Neighborhood Development Services
City Hall - 610 East Market Street
P.O. Box 911
Charlottesville, VA 22902
Ph 434.970.3130 FAX 434.970.3359
scala@charlottesville.org

From: Fred Wolf [mailto:fw@wolfackerman.com]
Sent: Monday, February 29, 2016 12:24 PM
To: Scala, Mary Joy
Cc: Diamond Theo
Subject: Re: Light House

Hi Mary Joy,

These elevations are slightly revised from our emails back in November (included below) where you said these could be approved administratively. But they are essentially the same. To summarize the changes again;

On the first drawing (West Elevation) the storefront beneath new steel canopy changed in number of glass panels, that doors was eliminated and the lower panels below desk height in that office will be spandrel glass. The window between the stucco walls was made narrower, a steel column had to be added by the structural engineer at the roof and we have removed the clear roof covering over the purlins for now. The sheet included original elevations (as approved previously) and newly proposed with these changes.

On the second drawing (South Elevation) the solid door down at the sidewalk level has changed to glass and has a transom above it just as described in the emails below.

I think none of these changes are major nor do they materially change the appearance or overall design of the project. Please let me know if these are approved. Particularly, we need to allow the contractor to finalize the storefront order for the new windows under the steel canopy and that includes the spandrel glass panels I mentioned.

Thank you!

Fred

WOLF ACKERMAN
110-B Second Street NE • Charlottesville, Virginia 22902
ph 434.296.4848 • fx 434.296.4877

visit us @ www.wolfackerman.com

On Nov 6, 2015, at 8:15 AM, Scala, Mary Joy <scala@charlottesville.org> wrote:

Fred,

I can approve those changes administratively. You may proceed with site plan approval and building permit.

Mary Joy Scala, AICP
Preservation and Design Planner
City of Charlottesville
Department of Neighborhood Development Services
City Hall – 610 East Market Street
P.O. Box 911
Charlottesville, VA 22902
Ph 434.970.3130 FAX 434.970.3359
scala@charlottesville.org

From: Fred Wolf [<mailto:fw@wolfackerman.com>]
Sent: Wednesday, November 04, 2015 3:39 PM
To: Scala, Mary Joy
Subject: Re: Light House

Mary Joy,

Attached are the west and south elevations plus a revised 3d image. Fred

WOLF ACKERMAN
110-B Second Street NE • Charlottesville, Virginia 22902
ph 434.296.4848 • fx 434.296.4877

visit us @ www.wolfackerman.com

On Nov 4, 2015, at 1:46 PM, Scala, Mary Joy <scala@charlottesville.org> wrote:

Could you send the proposed new west elevation drawing?

Mary Joy Scala, AICP

Preservation and Design Planner
City of Charlottesville
Department of Neighborhood Development Services
City Hall – 610 East Market Street
P.O. Box 911
Charlottesville, VA 22902
Ph 434.970.3130 FAX 434.970.3359
scala@charlottesville.org

From: Fred Wolf [<mailto:fw@wolfackerman.com>]
Sent: Wednesday, November 04, 2015 10:21 AM
To: Scala, Mary Joy
Subject: Light House

Hey Mary Joy,

Welcome back. I wanted to let you know that the city approved the storm pipe waiver with several requirements, but the one concerning the pipe appeared to have been toned down considerably - so much so that our client is reviewing it and probably will accept so that the project as we design it can move forward without any change to the foot print. So that would be great news.

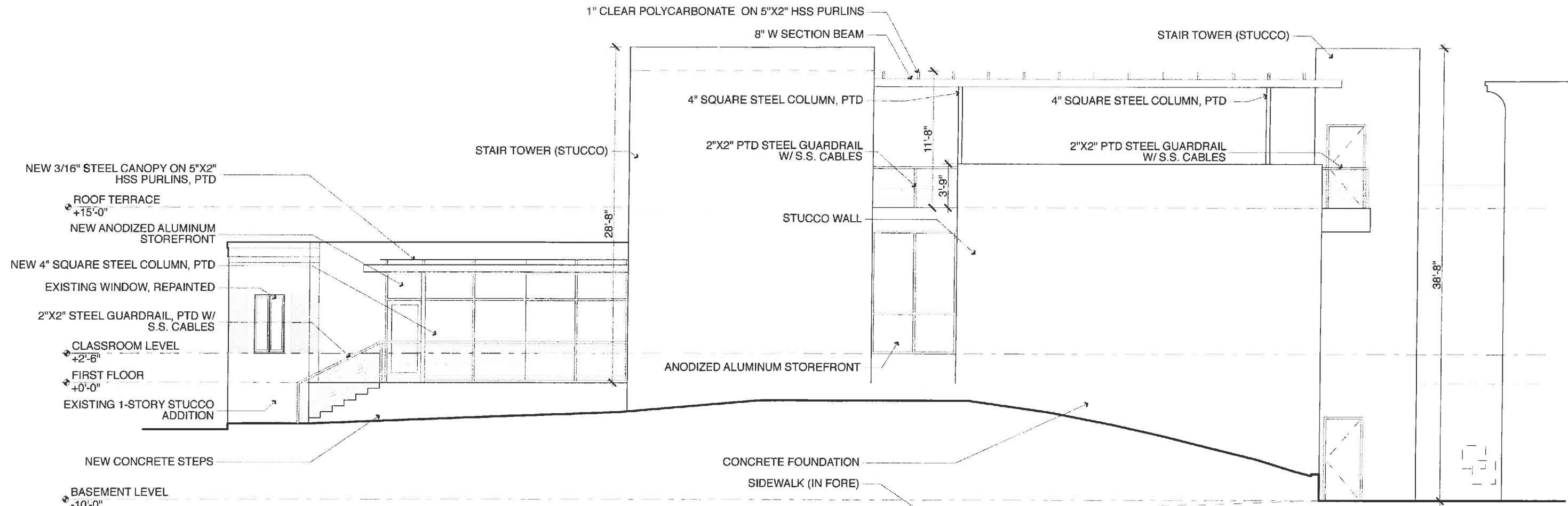
I did want to tell you that we want to propose two very minor revisions to the design that I'd like to see if you can approve. One is that we want to make the window on the west elevation narrower by 1/2 its dimension. And the second is that we want to turn the exterior door to the lower level studio to a full lite glass door with a glass transom panel above it to provide some light in that room.

I can send the 'before and after' of both elevations if you need them for the record. I don't think this impact the design in any negative way. If you can tell what I am suggesting by looking at our old drawings and think its ok, please let me know.

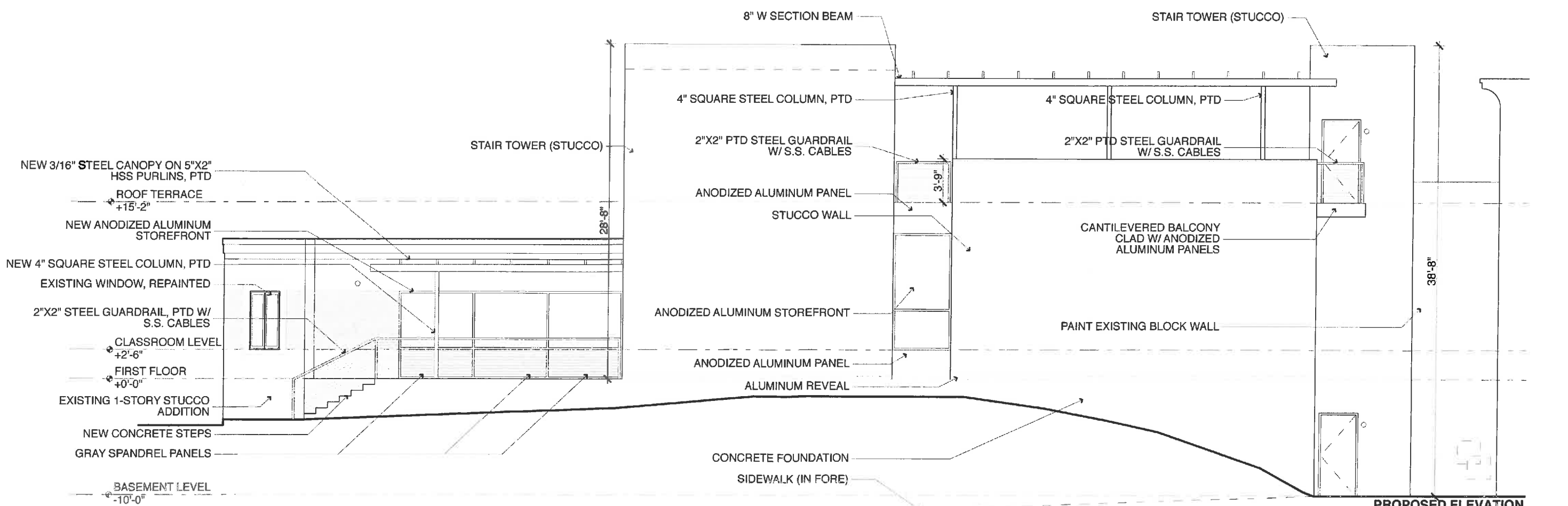
Thank you.
Fred

WOLF ACKERMAN ARCHITECTS & DESIGNERS
110-B Second Street NE • Charlottesville, Virginia 22902
ph 434.296.4848 • fx 434.296.4877

visit us @ www.wolfackerman.com



ORIGINAL ELEVATION



PROPOSED ELEVATION

