

Scala, Mary Joy

From: Scala, Mary Joy
Sent: Tuesday, May 10, 2016 11:03 AM
To: Wolf, Fred
Subject: RE: Light House exterior paint colors

Fred,
These color changes are approved.

Mary Joy Scala, AICP

Preservation and Design Planner
City of Charlottesville
Department of Neighborhood Development Services
City Hall - 610 East Market Street
P.O. Box 911
Charlottesville, VA 22902
Ph 434.970.3130 FAX 434.970.3359
scala@charlottesville.org

From: Fred Wolf [mailto:fw@wolfackerman.com]
Sent: Thursday, May 05, 2016 11:37 AM
To: Scala, Mary Joy
Subject: Light House exterior paint colors

Mary Joy,

I want to see if we can update our paint color selections for the existing portions of the building - what has become Phase 1 of this project. We had specified in our BAR submission the existing stucco would go to BM Providence Olive HC-98 <http://www.benjaminmoore.com/en-us/paint-color/providenceolive>. But the client wants to go with something a little more neutral in BM Ashley Gray HC-87 <http://www.benjaminmoore.com/en-us/paint-color/ashleygray>.

The white strip we show in our approved elevations corresponding to the band between the windows would be a BM knock-off of a Farrow & Ball color, Wevet # 273 <http://us.farrow-ball.com/wevet/colours/farrow-ball/fcp-product/100273>

The exterior window trim and sills shows as a dark gray would be BM Kendall Charcoal HC-166 <http://www.benjaminmoore.com/en-us/paint-color/kendallcharcoal>

I wanted to make sure you approve of these substitutions - and in the cases where not specified before, color choices.

Can you please let me know if you have any questions or think these are ok. I am including the PDF from our original submittal to make this easier.

Thanks!
Fred

ps - They decided to keep the exterior lighting located above the windows along Market Street too, but I am hoping to get you a new fixture to replace the existing ones.

WOLF | ACKERMAN architecture + design
110-B Second Street NE • Charlottesville, Virginia 22902
ph 434.296.4848 • fx 434.296.4877

visit us @ www.wolfackerman.com

Ashley Gray HC-67 Paint

www.benjaminmoore.com/en-us/paint-color/ashleygray

Benjamin Moore customer service: 855-724-6802 Login ENGLISH

Search

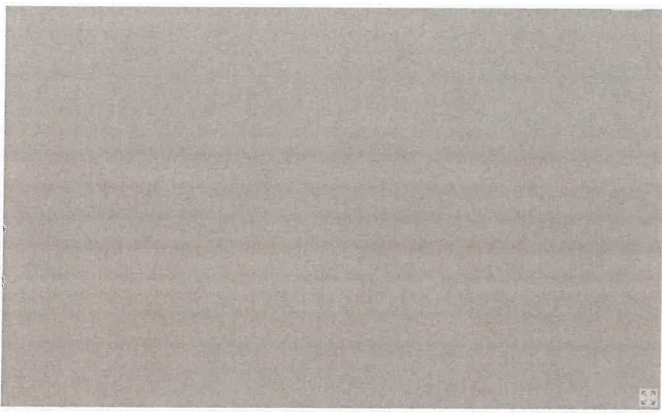
For Architects & Designers For Contractors

FOR YOUR HOME: Painting Ideas Explore Color Find Products Learn How Exterior Stains Shop Now Store Locator Register Now

USA -> For Your Home -> Explore Our Paint Colors -> Color Gallery

Color Gallery Rooms by Color Main View Help?

E-mail to a Friend Add to Favorites Print Like 53 G+ 1 Share 3K 3K



Ashley Gray

HC-67

[BUY SAMPLE](#) [BUY PAINT](#)




Elegant and rich, this muted shade of gray has a slight olive tint that pairs well with satin hardwood floors.

(This color is part of our Candice Olson Designer Picks collection.)


LR/ 33

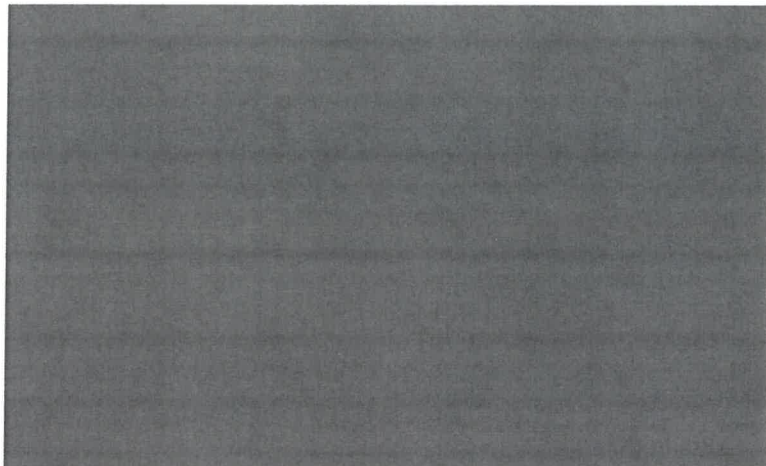
[EMBED COLOR](#) [BUY FAN DECK](#) [STORE LOCATOR](#)

SEE COLOR IN ROOM



GOES GREAT WITH





Kendall Charcoal

HC-166

Rich, deep, and luxurious, Kendall charcoal pops beautifully when paired with crisp white room accents and trim. A versatile neutral, it also works well with most color schemes.

SEE COLOR IN ROOM



GOES GREAT WITH



SIMILAR COLORS



MORE SHADES

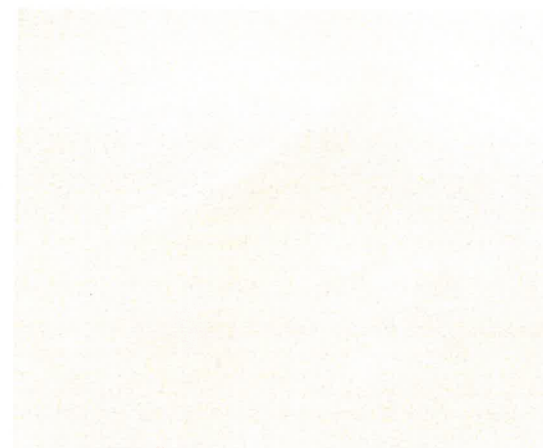




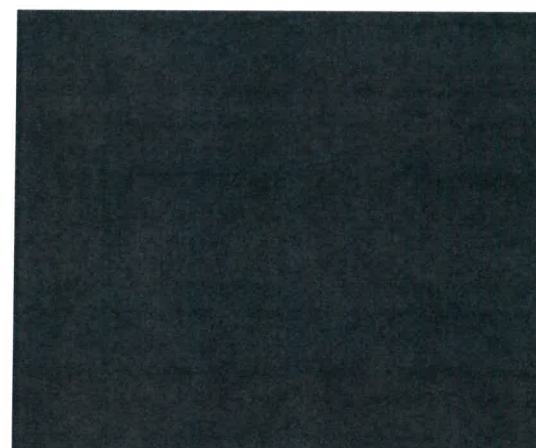
LIGHTHOUSE STUDIO AT VINEGAR HILL THEATRE WEST ELEVATION



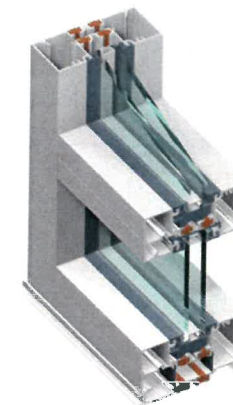
EXISTING STUCCO -PROVIDENCE OLIVE - BENJAMIN MOORE HC-98



NEW STUCCO -VARIANCE TIERRA - ALLOY



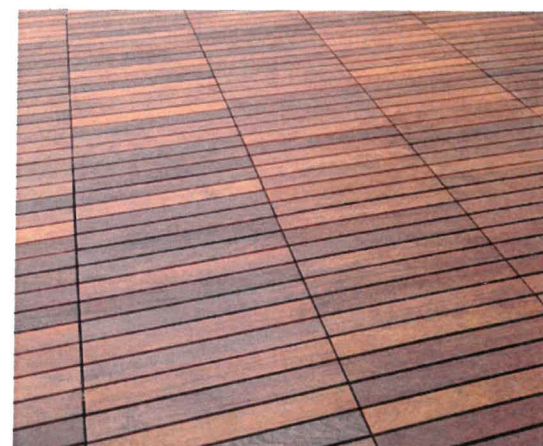
PAINTED STEEL + WINDOWS - BLACK HORIZON - BENJAMIN MOORE 2132-30



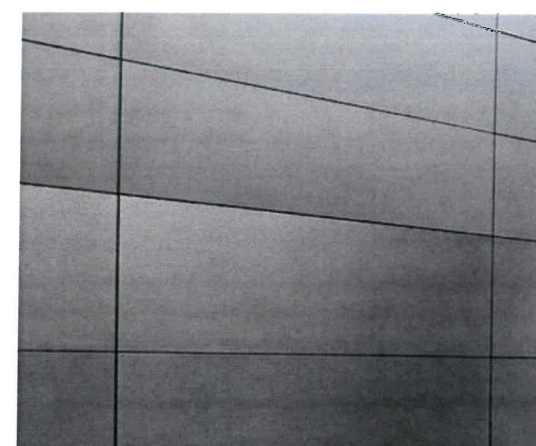
STOREFRONT - CLEAR ANODIZED ALUMINUM



ROOF CANOPY -PERFORATED STEEL



ROOF TERRACE -IPE DECK PANELS



ROOF TERRACE BALCONY - COATED ALUMINUM PANELS



FOUNDATION - EXPOSED CAST IN PLACE CONCRETE