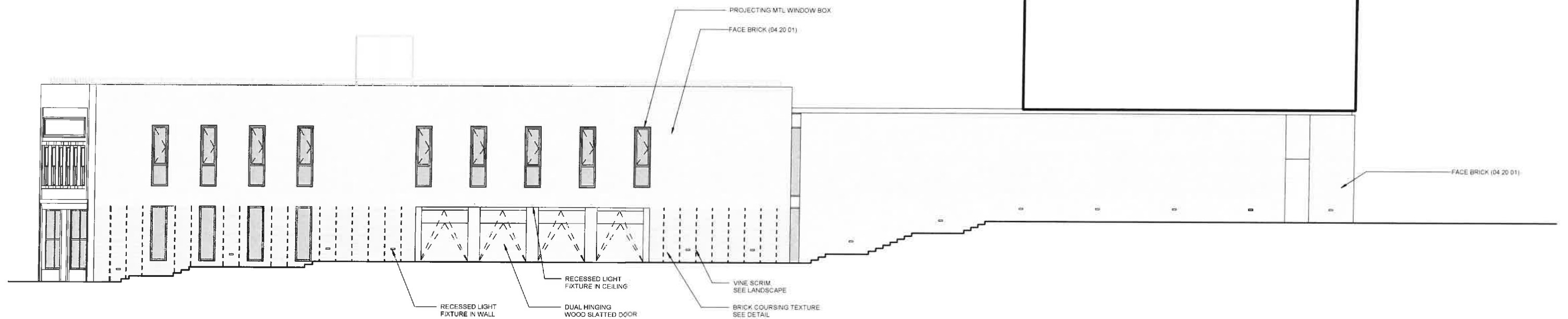
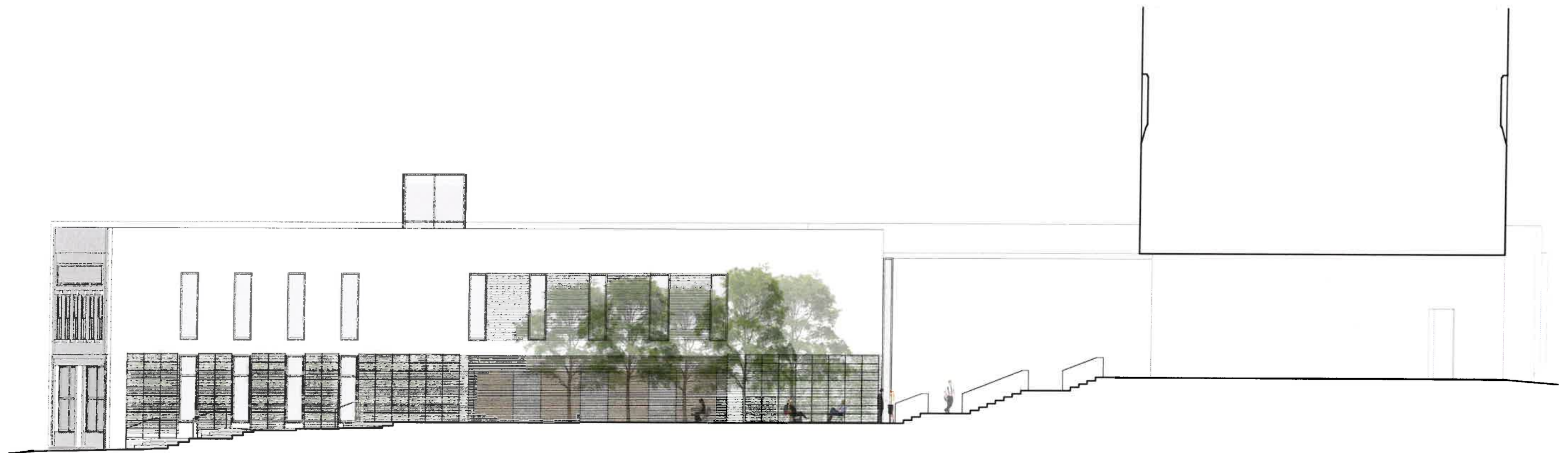
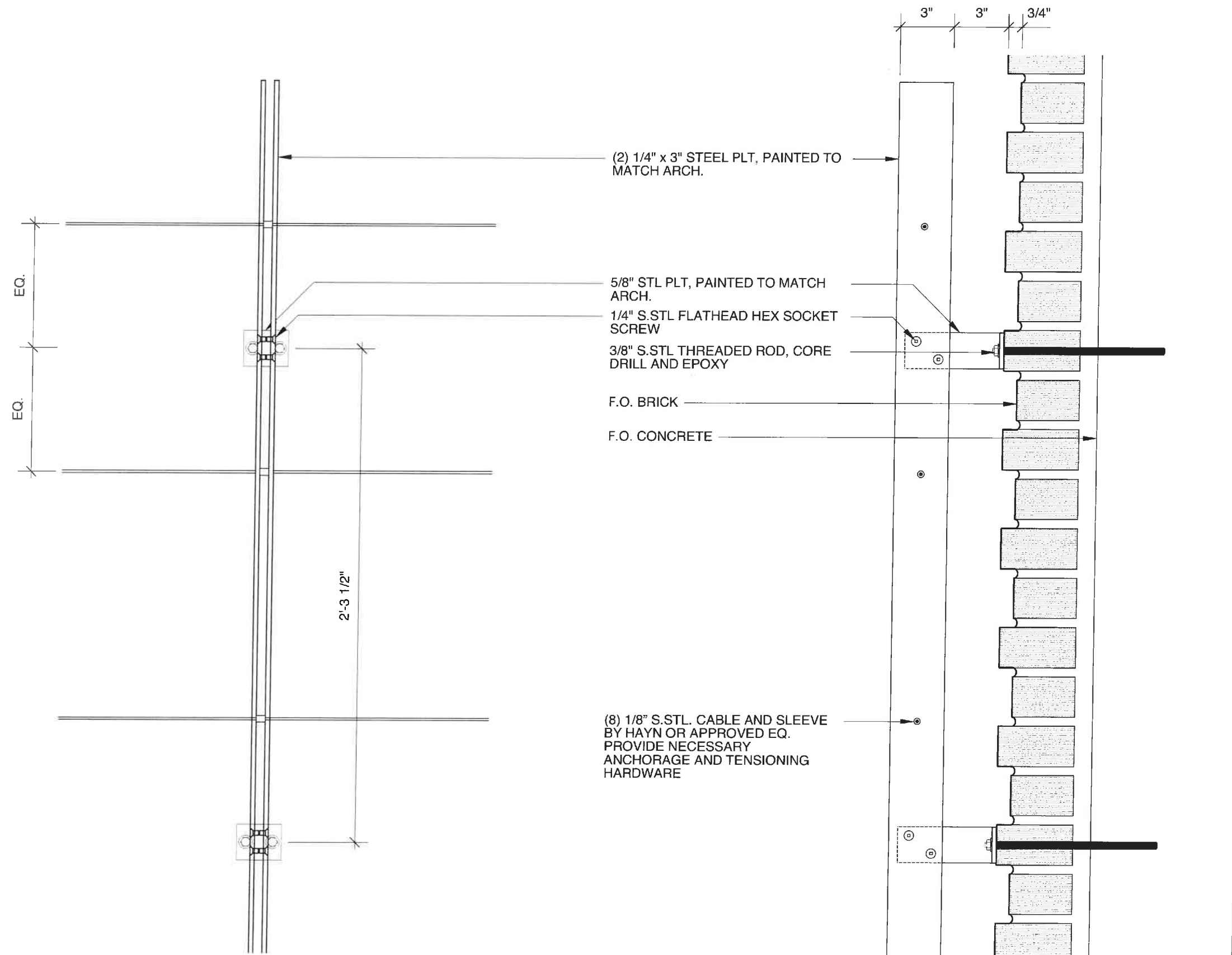


Textured Brick Profile









WOLF ACKERMAN DESIGN WITH ESKEW DUMEZ RIPPLE

The Technology Center

View · Courtyard from Water Street







LED drive-over in-grade floodlights

**Enclosure:** Outer housing: Constructed of high tensile strength, copper free die-cast aluminum alloy.

**Inner housing:** One piece copper free die-cast aluminum housing with welded end caps. Trim/Faceplate is heavy gauge, machined stainless steel secured to the inner housing by stainless steel threaded welded studs. Relamping requires removal of inner housing/trim/faceplate assembly from outer housing by means of two flush, socket head stainless steel screws. 1/2" thick tempered glass machined flush to faceplate. One piece molded U-channel, high temperature silicone gasket. Reflector of pure anodized aluminum.

**Electrical:** 39.6W LED luminaire, 45.5 total system watts, -30°C start temperature. Integral 120V through 277V electronic LED driver, 0-10V dimming. LED module(s) are available from factory for easy replacement. Standard LED color temperature is 4000K with an >80 CRI. Available in 3000K (>80 CRI); add suffix K3 to order. Inner housing pre-wired with nine (9) feet of 18/3 waterproof cable, cable clamp, and waterproof cable gland entry into housing. A separate waterproof wiring box for power supply must be provided (by contractor).

**Note:** LEDs supplied with luminaire. Due to the dynamic nature of LED technology, LED luminaire data on this sheet is subject to change at the discretion of BEGA-US. For the most current technical data, please refer to [www.bega-us.com](http://www.bega-us.com).

**Finish:** Machined #4 stainless steel. Custom colors are not available.

**Temperature caution:** The column 'T' in this chart indicates the temperature in degrees Celsius which is reached on the center of the glass surface during operation. Surface temperatures are for exterior applications. For interior applications add 10° C to temperatures shown.

**Note:** A foundation and proper drainage must be supplied by the contractor. These luminaires are designed to bear pressure loads up to 11,000 lbs. from vehicles with pneumatic tires. The luminaires must not be used for traffic lanes where they are subject to horizontal pressure from vehicles braking, accelerating and changing direction.

**CSA** certified to U.S. and Canadian standards, suitable for wet locations. Protection class IP67

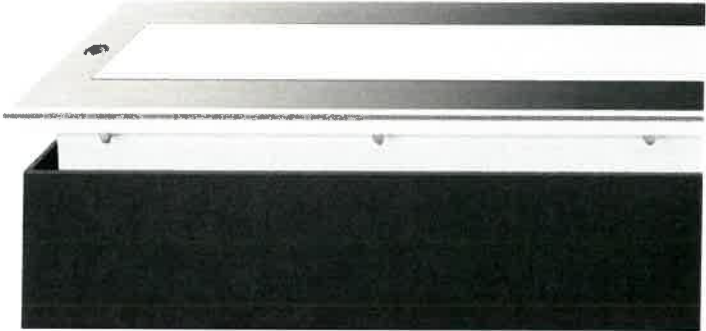
**Weight:** 35.3 lbs.

**Luminaire Lumens:** 776  
Tested in accordance with LM-79-08

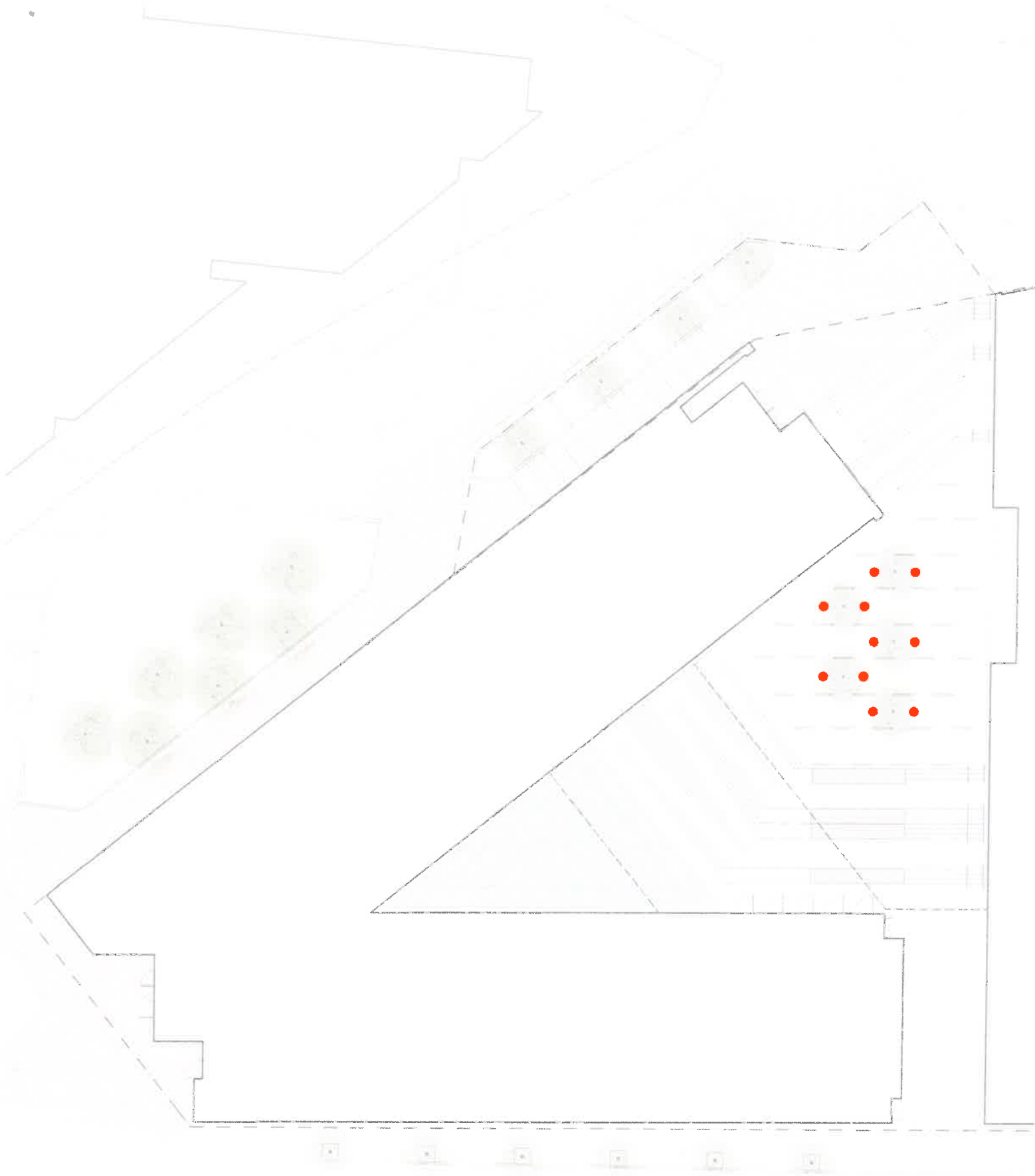


Location luminaires • white safety glass					
Lamp	T	A	B	C	
77 603	39.6W LED	30°	4 5⁄8 x 48 5⁄8	4 1⁄4 x 48 1⁄4	5

Type:  
BEGA Product:  
Project:  
Voltage:  
Color:  
Options:  
Modified:



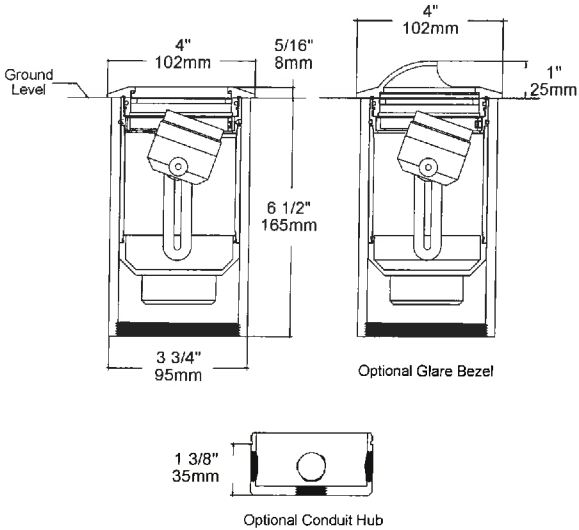
**BEGA-US** 1000 BEGA Way, Carpinteria, CA 93013 (805) 684-0533 FAX (805) 566-9474 [www.bega-us.com](http://www.bega-us.com)  
©copyright BEGA-US 2016 Undated 02/16



## LWL4 AXIS



BR-BLP



The **LWL4** is a high performance low energy LED well light that features unmatched aiming ability. By combining a full 45° of tilt onto the horizon with 360° of rotation and the ability to regress the light source up to 2" below the lens; the **LWL4** is in a class of its own .

- Features include:**
- 5 Watts
  - Cree XLAMP® High Intensity (XP-L) LED
  - 2700, 3000 or 4500K
  - Fully Integrated LED
  - Rated for Interior and Exterior Use
  - Dimmable to <10% typ.
  - 12 VAC Electronic or Magnetic Source Compatible
  - Solid Brass Body with Brass or Stainless Steel Faceplate



### FACEPLATE OPTIONS

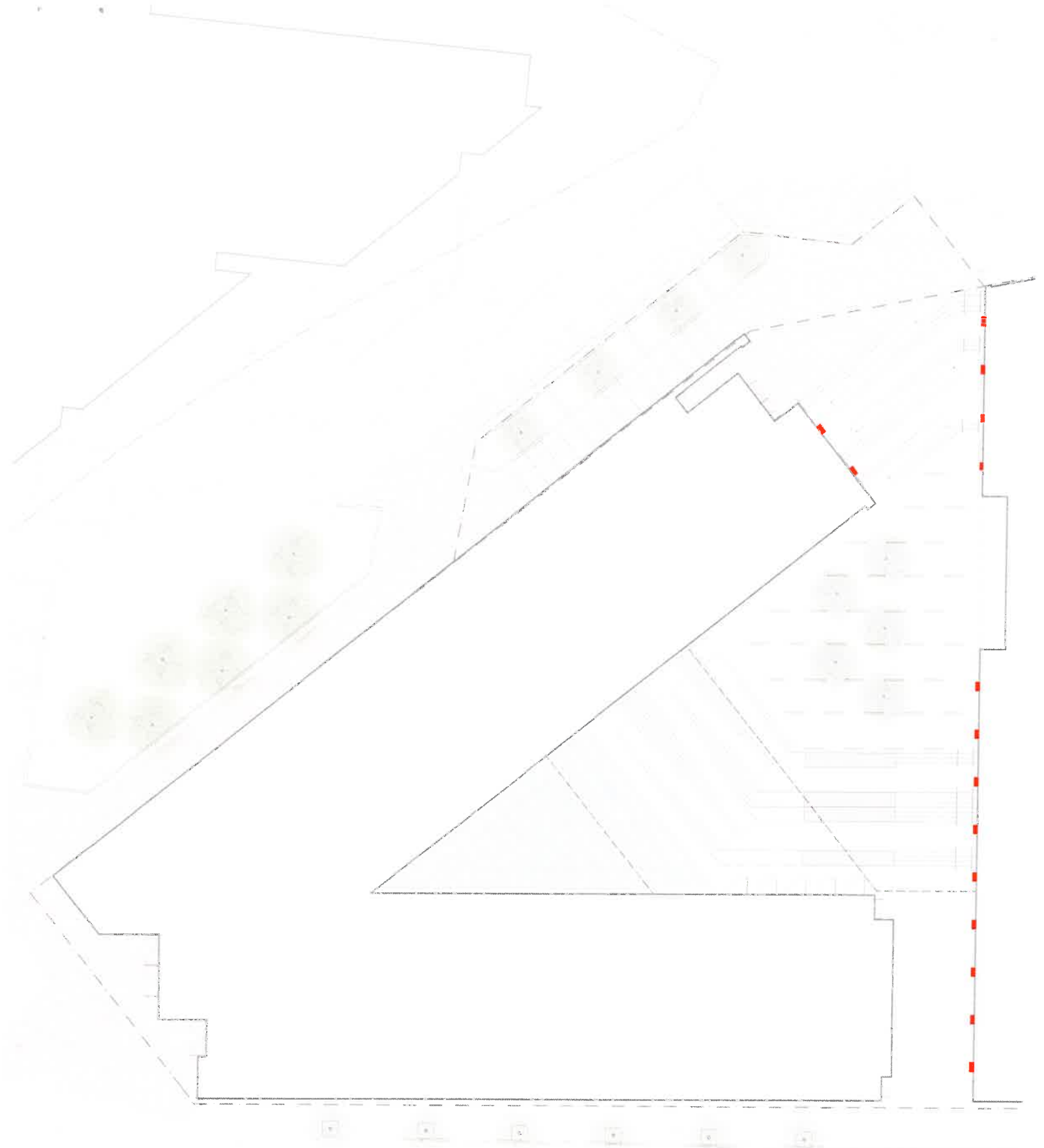


### ORDERING GUIDE LWL4: L (LED) WL (WELL LIGHT) 4 (INCHES)

RED INDICATES REQUIRED FIELD

FACEPLATE	OPTIC	LED	ACCESSORIES/MOUNTS	FINISH
<b>[BR]</b> Brass	<b>[N]</b> 10° Narrow	<b>[27]</b> 2700K	<b>ACCESSORIES</b> (Select One):	<b>[NAT]</b> Natural
<b>[SS]</b> Stainless Steel	<b>[M]</b> 25° Medium	<b>[30]</b> 3000K	<b>[H]</b> Hex Baffle (Included)	<b>[BLP]</b> Bronze Living Patina (Applies to BR)
<b>[GB]</b> Brass Glare Bezel	<b>[W]</b> 40° Wide	<b>[45]</b> 4500K XPG	<b>[HD]</b> Deep Hex Baffle	<b>[BLP-XD]</b> BLP Extra Dark (Applies to BR)
	<b>[WF]</b> 60° Wide Flood	<b>[27D]</b> 2700K	<b>[L]</b> Linear Spread	<b>[NI]</b> Nickel PVD (Applies to BR)
	<b>[A]</b> All	<b>[30D]</b> 3000K	<b>[P]</b> Prismatic Lens	<b>[PC]</b> Powder Coat- Specify Color (Applies to BR)
		<b>[45D]</b> 4500K XPG	<b>[MP]</b> Micro Prismatic	
		[D] = Dimmable	<b>[F]</b> Frost (Diffusion)	
			<b>[O]</b> Opal Lens	
			<b>[R1, 2, 3 or 4]</b> Red	
			<b>[G1, 2, 3, or 4]</b> Green	
			<b>[B1, 2, 3, or 4]</b> Blue	
			<b>[Y1, 2, 3 or 4]</b> Yellow	
			<b>MOUNTS</b> (Select One):	
			<b>[CHA]</b> Conduit Hub, Aluminum	
			<b>[CHB]</b> Conduit Hub, Brass	





LED recessed wall luminaires - asymmetrical forward throw

BEGA

Application

LED recessed wall luminaire with asymmetrical forward throw distribution for superior illumination of ground surfaces from an extremely low mounting height.

Materials

Luminaire housing and faceplate constructed of die-cast aluminum marine grade, copper free (≤ 0.3% copper content) A360.0 aluminum alloy  
Clear safety glass with optical texture  
Reflector made of pure anodized aluminum  
Silicone applied robotically to casting, plasma treated for increased adhesion  
High temperature silicone gasket  
Mechanically captive stainless steel fasteners  
Stainless steel screw clamps  
Composite installation housing

NRTL listed to North American Standards, suitable for wet locations  
Protection class IP65  
Weight: 1.2 lbs

Electrical

Operating voltage 120-277VAC  
Minimum start temperature -40°C  
LED module wattage 5.1 W  
System wattage 8.0 W  
Controlability 0-10V dimmable  
Color rendering index Ra > 80  
Luminaire lumens 301 lumens (3000K)  
Lifetime at Ta=15°C > 500,000 h (L70)  
Lifetime at Ta=25°C 470,000 h (L70)

LED color temperature

2700K - Product number + **K27**  
3000K - Product number + **K3**  
3500K - Product number + **K35**  
4000K - Product number + **K4**

BEGA can supply you with suitable LED replacement modules for up to 20 years after the purchase of LED luminaires - see website for details

Finish

All BEGA standard finishes are matte, textured polyester powder coat with minimum 3 mil thickness.

Available colors	Black (BLK)	White (WHT)	RAL:
	Bronze (BRZ)	Silver (SLV)	CUS:

Type:

BEGA Product:

Project:

Modified:



Fully enclosed luminaire with installation housing ensures seamless integration and weathertight operation.

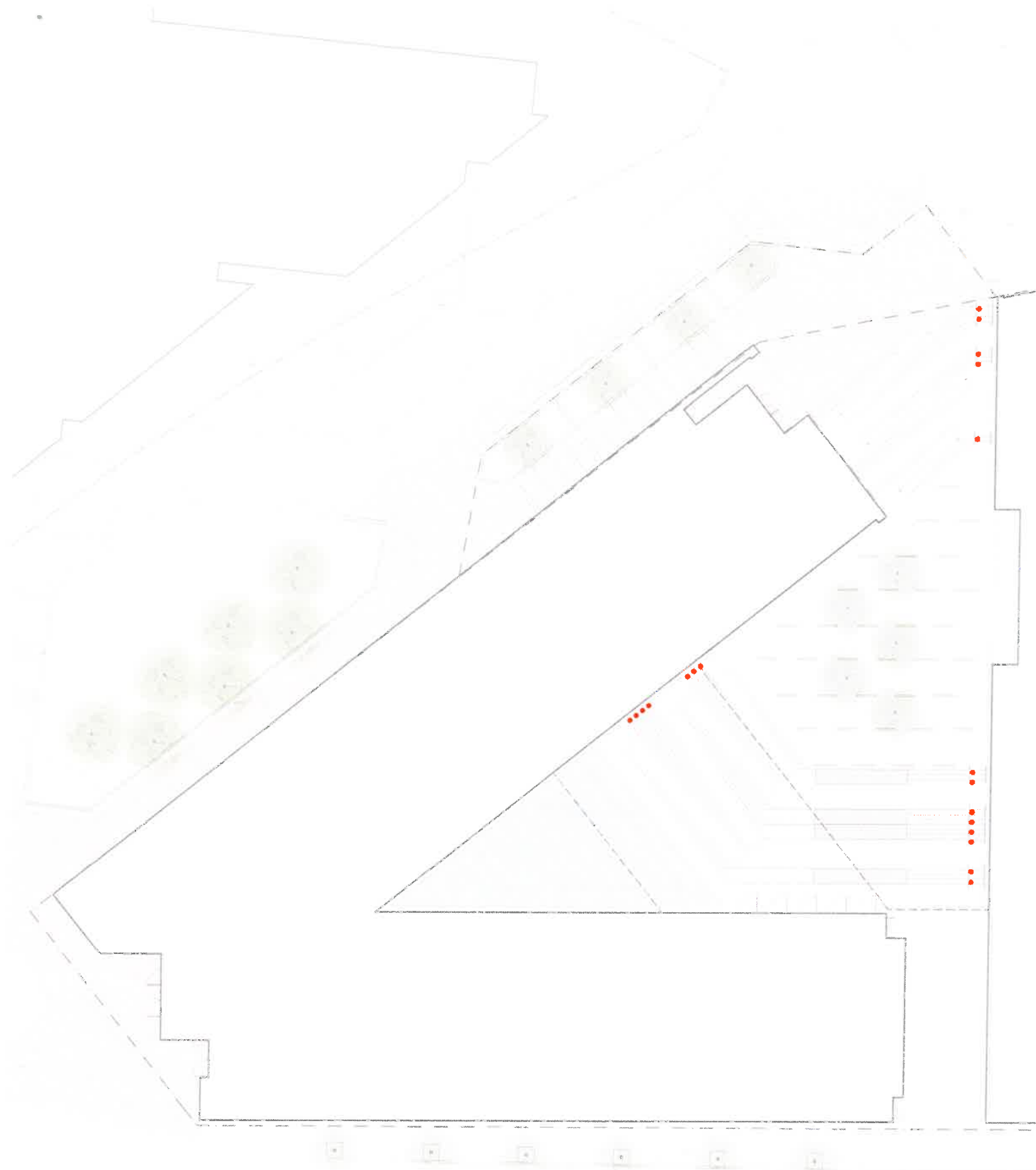


LED recessed wall luminaires - asym. forward throw

	LED	A	B	C
24 063	5.1 W	6 3/4"	2 3/4"	5"

BEGA 1000 BEGA Way, Carpinteria, CA 93013 (805) 664-0533 info@bega-us.com

Due to the dynamic nature of lighting products and the associated technologies, luminaire data on this sheet is subject to change at the discretion of BEGA North America. For the most current technical data, please refer to bega-us.com  
© copyright BEGA 2018 Updated 03/21/18



Small scale in-grade luminaires  
 STAINLESS STEEL for LEDs

**Housing:** Constructed of one-piece cast stainless steel.

**Enclosure:** Tempered white safety glass, machined to be flush with the stainless steel faceplate. Faceplate is secured by four (4) captive flat head stainless steel screw and is machined to fit flush to mounting surface. Pure anodized aluminum reflector. One piece molded U-channel, high temperature silicone rubber gasket for weather tight operation.

**Electrical:** 0.6W LED luminaire on a 24V DC circuit, 1 total system watts. Remote electronic 24V DC driver required. Standard LED color temperature is 4000K with an 85 CRI. Available in 3000K (85 CRI); add suffix K3 to order. Pre-wired with ten (10) feet of 12 AWG wire and waterproof cable gland entry into housing.

**Note:** LEDs supplied with luminaire. Due to the dynamic nature of LED technology, LED luminaire data on this sheet is subject to change at the discretion of BEGA-US. For the most current technical data, please refer to [www.bega-us.com](http://www.bega-us.com).

**Finish:** Machined #4 brushed stainless steel. Custom colors are not available.

**Note:** A foundation must be supplied by the customer. These luminaires are designed to bear pressure loads up to 4400 lbs. from vehicles with pneumatic tires. The luminaires must not be used for traffic lanes where they are subject to horizontal pressure from vehicles braking, accelerating and changing direction.

CSA certified to U.S. and Canadian standards, suitable for wet locations. Protection class IP68 10m

**Weight:** 1.8 lbs.

Luminaire Lumens: 28



Location luminaire - white safety glass

round	Lamp	A	B	C
77027*	0.6W LED	3	1 1/4	2 1/2

\*Remote electronic driver required

**BEGA** 1000 BEGA Way, Carpinteria, CA 93013 (805) 684-0533 FAX (805) 566-9474 [www.bega-us.com](http://www.bega-us.com)  
 ©copyright BEGA 2018 Updated 03/2018

Type:  
 BEGA Product:  
 Project:  
 Voltage:  
 Color:  
 Options:  
 Modified:



Small scale in-grade luminaires  
STAINLESS STEEL for LEDs

**Housing:** Constructed of one-piece cast stainless steel.

**Enclosure:** Tempered white safety glass, machined to be flush with the stainless steel faceplate. Faceplate is secured by four (4) captive flat head stainless steel screw and is machined to fit flush to mounting surface. Pure anodized aluminum reflector. One piece molded U-channel, high temperature silicone rubber gasket for weather tight operation.

**Electrical:** 2.1W LED luminaire on a 24V DC circuit, 4 total system watts. Remote electronic 24V DC driver required. Standard LED color temperature is 4000K with an 85 CRI. Available in 3000K (85 CRI); add suffix K3 to order. Pre-wired with ten (10) feet of 12 AWG wire and waterproof cable gland entry into housing.

**Note:** LEDs supplied with luminaire. Due to the dynamic nature of LED technology, LED luminaire data on this sheet is subject to change at the discretion of BEGA-US. For the most current technical data, please refer to [www.bega-us.com](http://www.bega-us.com).

**Finish:** Machined #4 brushed stainless steel. Custom colors are not available.

**Note:** A foundation must be supplied by the customer. These luminaires are designed to bear pressure loads up to 4400 lbs. from vehicles with pneumatic tires. The luminaires must not be used for traffic lanes where they are subject to horizontal pressure from vehicles braking, accelerating and changing direction.

**CSA** certified to U.S. and Canadian standards, suitable for wet locations. Protection class IP68 10m

**Weight:** 3.1 lbs.

Luminaire Lumens: 74

Type:  
BEGA Product:  
Project:  
Voltage:  
Color:  
Options:  
Modified:

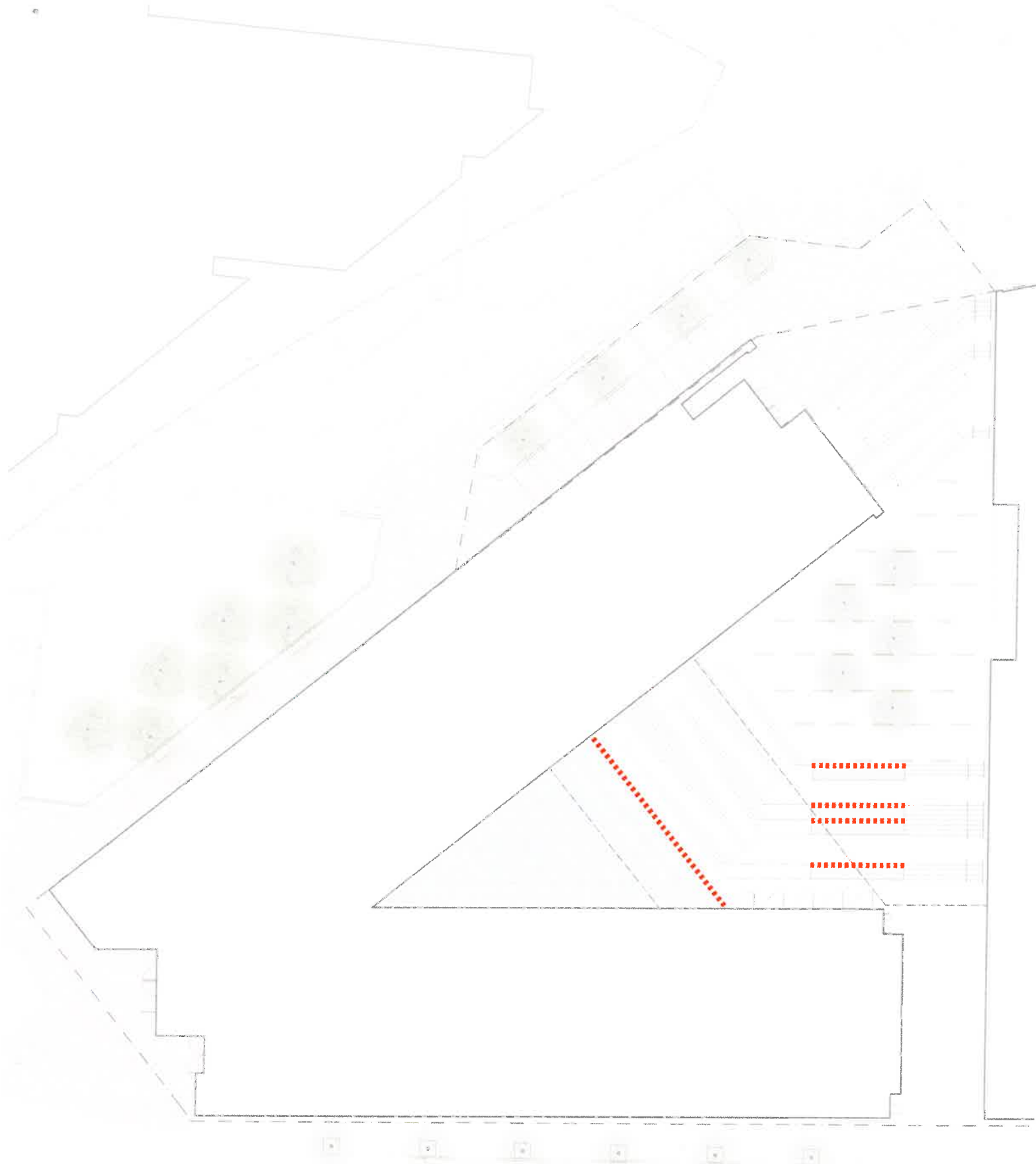


Location luminaire - white safety glass

round	Lamp	A	B	C
77 028*	2.1W LED	4 1/8"	3 1/8"	3 7/8"

\* Remote electronic driver required

**BEGA** 1000 BEGA Way, Carpinteria, CA 93013 (805) 684-0533 FAX (805) 566-9474 [www.bega-us.com](http://www.bega-us.com)  
©copyright BEGA 2018 Updated 03/2018



# Gen3™ MiniWasher™

MODEL V3285 | LED LINEAR LUMINAIRE | WET LOCATION\*

Gen3 is an architectural-grade, wet-location LED luminaire engineered for the illumination & highlighting of walls & surfaces.

US 8,255,487 | US 8,264,172  
Additional Patents Pending

PROJECT NAME

LIGHTLINK

1% DIMMING

MADE IN THE USA

ROHS COMPLIANT 2002/96/EC

UL US

FC

ANSI LED BINNING

IP 66

LM 79 TESTED

LM 80 LEDs

FIXTURE BUILDER

V3285

A

-

OPTIONS

Select one of each option below

FIXTURE TYPE	OUTPUT	LENGTH	BEAM ANGLE	LED COLOR	LOCATION
Gen3 MiniWasher	A 8W / Ft	1 12" 8 18" 2 24" 3 36" 4 48"	3 30° 6 65° 8 82°	AAH Cool White – 6500°K AAG Cool White – 5700°K* AAF Cool White – 5000°K BBE Neutral White – 4500°K BBD Neutral White – 4000°K* BBDR Neutral White – 4000°K - 90+ CRI CBC Warm White – 3500°K CBB Warm White – 3000°K* CBBR Warm White – 3000°K - 90+ CRI CBA Warm White – 2700°K CBAR Warm White – 2700°K - 90+ CRI DC Green EC Blue HC Red	<input type="checkbox"/> Outdoor* <input type="checkbox"/> Indoor

FINISH

☐ Black Anodize\*  
☐ Clear Anodize

ACCESSORIES

DIMMING CONTROL

POWER BOXES

BRACKETS & BAFFLES

LIGHTLINK

☐ LL-20S-10V 0-10V Bridge & Dimmer

DIMMING CABLE

☐ 685-0156-100 Indoor, 100ft, Plenum  
☐ 685-02026-100 Outdoor, 100ft, Water/UV

INDOOR RATED

VOLTAGE	POWERS
<input type="checkbox"/> E05P 75W 120-277V AC	10 ft

OUTDOOR RATED

☐ E05PW 75W 120-277V AC 10 ft

BRACKETS

☐ VLA-14 Rotational Adjustable  
☐ VLA-5 Hinge Adjustable  
☐ VLA-15 Fixed

EXTENDED BRACKETS

☐ VLAX2-6 6" Adjustable  
☐ VLAX2-12 12" Adjustable

BAFFLES (INDOOR ONLY)

☐ Black 810-02663-xxB  
☐ White 810-02663-xxW

xx = fixture length

QUICK SPECS

Input Voltage	20-30V DC, 24V nom.	Humidity	0 to 95% Non Condensing
Power / Ft	8 Watts	CRI	85 typ, 90+ Optional
Lumens / Ft	400 lms typ. @ 3000°K	Max. Wire Distance	50 Feet from Last Light to Power Box using 16 AWG
Efficiency	51 lms / W typ. @ 3000°K	Housing	Mil-Spec Anodized Aluminum
Operating Temp	-20°C to 40°C	Lens	UV Resistant Acrylic
Max. Case Temp	50°C		

Outdoor Lengths Shown. Subtract .15 inches [3.8mm] for Indoor Lengths.

For complete technical information refer to the Gen3 Installation Guide available at [www.i2systems.com](http://www.i2systems.com)

PHOTOMETRICS

Additional Angles at [i2systems.com](http://i2systems.com)

48" GEN3 MINIWASHER (V3285A-46CBB) RESULTS

Mounting Height	fc @ Center Beam	Diameter of Lighted Plane
4.0 ft	61.1 fc	4.78 ft
6.0 ft	27.2 fc	7.18 ft
8.0 ft	15.3 fc	9.57 ft
10.0 ft	9.78 fc	12.0 ft
12.0 ft	6.79 fc	14.4 ft
14.0 ft	4.99 fc	16.7 ft
16.0 ft	3.82 fc	19.1 ft

for lux, multiply by 10.8

Multiplier Table

	3000°K	4000°K	5700°K
Standard CRI		x1.05	x1.10
High CRI	x0.90	x0.95	x1.00

All results are according to IESNA LM-79-2008 Approved Method for the Electrical and Photometric Testing of Solid-State Lighting



355 Bantam Lake Rd.  
Morris, CT 06763 USA

[www.i2systems.com](http://www.i2systems.com)

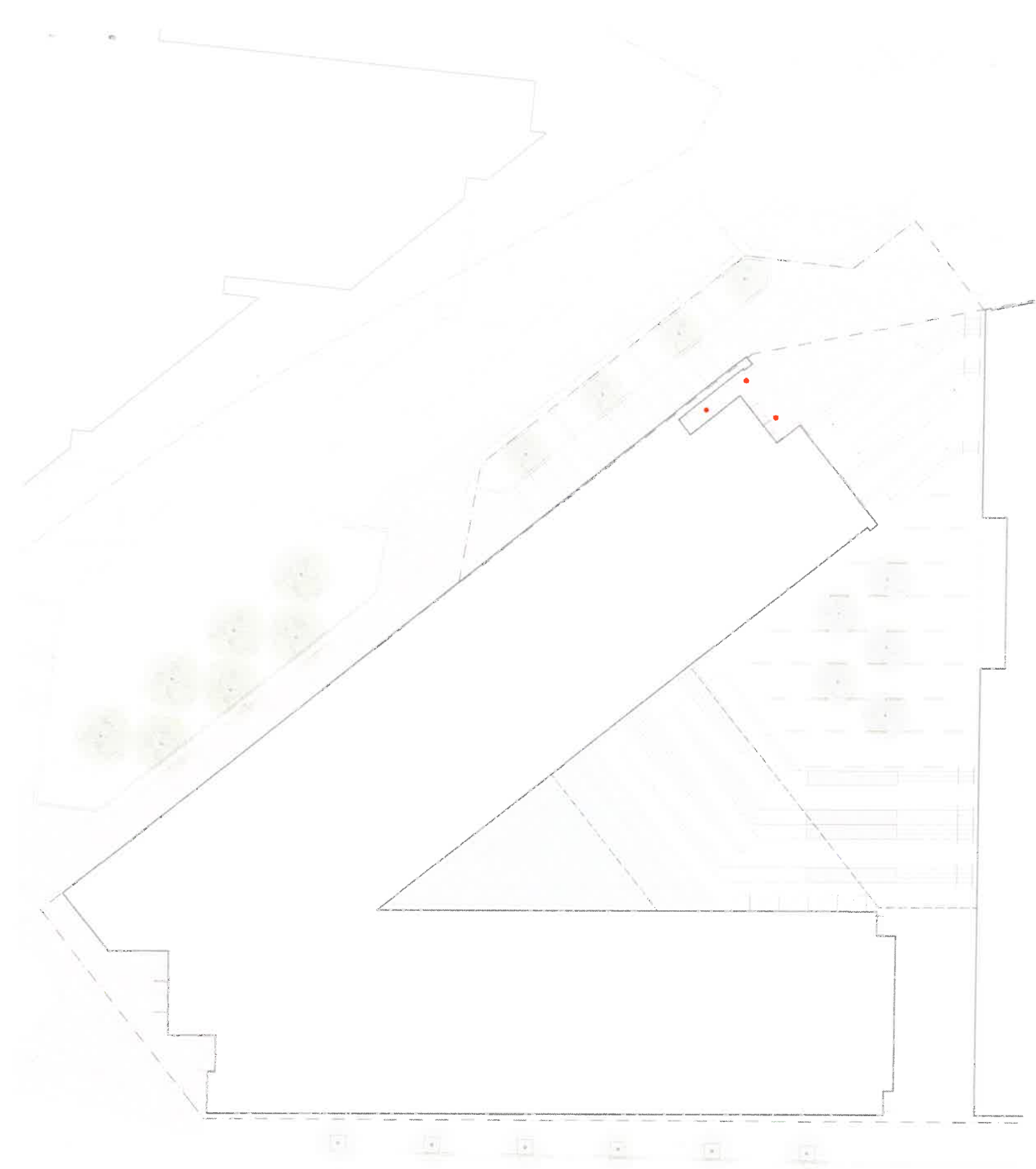
tel +1 860.567.0708  
fax +1 860.567.2501

[sales@i2systems.com](mailto:sales@i2systems.com)

© 2010 Integrated Illumination Systems, Inc. All Rights Reserved. i2Systems, the i2Systems logo, Gen3 MiniWasher and LightLink are either registered trademarks or trademarks of i2Systems. Due to ongoing improvement and innovation, product details and specifications are subject to change without notice.

030-023346

\*Product specified as "Outdoor" is rated for exterior applications, however it is not rated for submersible applications and should not be mounted in conditions where there is, or is a possibility of, standing water. When installing in wet or damp locations, it is good practice to seal all hollow and junction boxes with electronic-grade RTV silicone sealant to ensure that moisture cannot enter or accumulate in wiring compartments, cables, or other electrical parts. Product should not be installed in extreme locations, including but not limited to: those outside of its temperature/humidity rating, environments subject to greater-than-average temperature shifts, and/or applications where product is subject to water runoff or downpours. For more information, please refer to the Gen3 Installation Guide available at [www.i2systems.com](http://www.i2systems.com).



Recessed ceiling luminaires - faceplate STAINLESS STEEL - wide beam

**Housing:** Constructed of extruded and die cast aluminum. Housing is provided with mounting clamps that provide a vibration proof installation. Rough-in housing constructed of galvanized steel with through wiring box. Rough-in housing included. Die castings are marine grade, copper free ( $\leq 0.3\%$  copper content) A360.0 aluminum alloy.

**Enclosure:** All stainless steel faceplate. Clear 3/16" thick tempered glass; faceplate is secured by four (4) flat socket head, stainless steel, caprice screws threaded into stainless steel inserts in the housing. Internal reflector made from pure, anodized aluminum. Fully gasketed for weather tight operation using a molded silicon gasket.

**Electrical:** 8.7W LED luminaire, 11 total system watts, -30°C start temperature. EldoLED 0-10V dimmable driver mounted to the junction box of the ceiling pan for easy maintenance. The LED driver provides smooth and flicker free dimming down to 0.1% and is compatible with both sink and current source controllers. Optional Dali dimmable driver available, consult factory for details. LED module(s) are available from factory for easy replacement. Standard LED color temperature is 3000K with an 85 CRI. Available in 4000K (85 CRI); add suffix K4 to order.

**Note:** LEDs supplied with luminaire. Due to the dynamic nature of LED technology, LED luminaire data on this sheet is subject to change at the discretion of BEGA-US. For the most current technical data, please refer to [www.bega-us.com](http://www.bega-us.com).

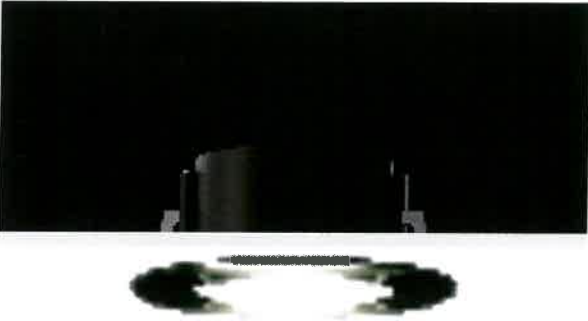
**Finish:** #4 brushed stainless steel. Stainless steel requires regular cleaning and maintenance, much like appliances, to maintain its luster and to prevent tarnishing or the appearance of rust like stains.

CSA certified to U.S. and Canadian standards, suitable for wet locations. Protection class IP65

**Weight:** 0.9 lbs.

Luminaire Lumens: 933

Type:  
BEGA Product:  
Project:  
Voltage:  
Color:  
Options:  
Modified:

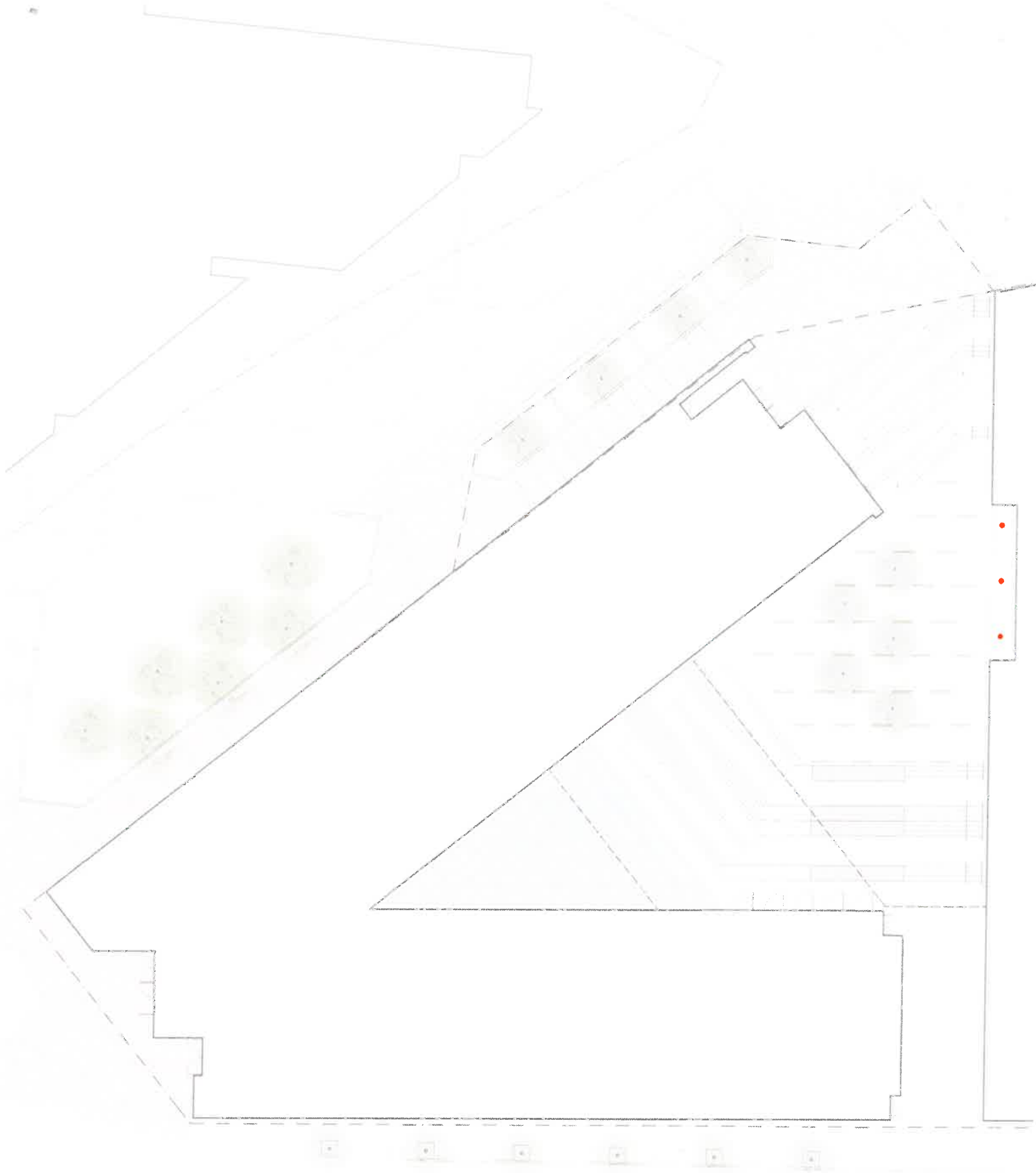


Recessed ceiling downlights - wide beam

Lamp	$\beta$	A	B	C
55824	8.7W LED	81°	4 3/8	2 7/8 18

$\beta$  = Beam angle

**BEGA** 1000 BEGA Way, Carpinteria, CA 93013 (805) 684-0533 FAX (805) 566-9474 [www.bega-us.com](http://www.bega-us.com)  
©copyright BEGA 2018 Updated 03/2018



**Housing:** Constructed of extruded and die cast aluminum. Housing is provided with mounting clamps that provide a vibration proof installation. Rough-in housing constructed of galvanized steel with through wiring box. Rough-in housing included. Die castings are marine grade, copper free ( $\leq 0.3\%$  copper content) A360.0 aluminum alloy.

**Enclosure:** All stainless steel faceplate. Clear 3/16" thick tempered glass; faceplate is secured by four (4) flat socket head, stainless steel, captive screws threaded into stainless steel inserts in the housing. Internal reflector made from pure, anodized aluminum. Fully gasketed for weather tight operation using a molded silicon gasket.

**Electrical:** 8.7W LED luminaire, 11 total system watts, -30°C start temperature. EldoLED 0-10V dimmable driver mounted to the junction box of the ceiling pan for easy maintenance. The LED driver provides smooth and flicker free dimming down to 0.1% and is compatible with both sink and current source controllers. Optional Dali dimmable driver available, consult factory for details. LED module(s) are available from factory for easy replacement. Standard LED color temperature is 3000K with an 85 CRI. Available in 4000K (85 CRI); add suffix K4 to order.

**Note:** LEDs supplied with luminaire. Due to the dynamic nature of LED technology, LED luminaire data on this sheet is subject to change at the discretion of BEGA-US. For the most current technical data, please refer to [www.bega-us.com](http://www.bega-us.com).

**Finish:** #4 brushed stainless steel. Stainless steel requires regular cleaning and maintenance, much like appliances, to maintain its luster and to prevent tarnishing or the appearance of rust like stains.

**CSA** certified to U.S. and Canadian standards, suitable for wet locations. Protection class IP65

**Weight:** 0.9 lbs.

**Luminaire Lumens:** 921



	Lamp	$\beta$	A	B	C
55 823	8.7W LED	19°	4 <sup>3</sup> / <sub>8</sub>	2 <sup>7</sup> / <sub>8</sub>	18

$\beta$  = Beam angle

**BEGA** 1000 BEGA Way, Carpinteria, CA 93013 (805) 684-0533 FAX (805) 566-9474 [www.bega-us.com](http://www.bega-us.com)  
©copyright BEGA 2018 Updated 04/2018

Type:  
BEGA Product:  
Project:  
Voltage:  
Color:  
Options:  
Modified:





LED linear ceiling and wall luminaires - unshielded

BEGA

**Application**  
LED linear ceiling and wall luminaire with unshielded light distribution. Arranged individually, in continuous bands of light or grouped together, these luminaires can accentuate building architecture while providing glare free illumination.

**Materials**  
Luminaire housing and faceplate constructed of die-cast marine grade, copper free ( $\leq 0.3\%$  copper content) A360.0 aluminum alloy  
White safety glass  
Silicone applied robotically to casting, plasma treated for increased adhesion  
High temperature silicone gasket  
Mechanically captive stainless steel fasteners

**NRTL** listed to North American Standards, suitable for wet locations  
Protection class IP 65  
Weight: 20.1 lbs

**Electrical**  
Operating voltage 120-277VAC  
Minimum start temperature  $-40^{\circ}\text{C}$   
LED module wattage 48.0W  
System wattage 55.0W  
Controllability 0-10V dimming  
Color rendering index  $Ra > 80$   
Luminaire lumens 3,359 lumens (3000K)  
Lifetime at  $Ta = 15^{\circ}\text{C}$   $> 500,000\text{ h (L70)}$   
Lifetime at  $Ta = 50^{\circ}\text{C}$  133,000 h (L70)

**LED color temperature**  
☐ 4000K - Product number + **K4**  
☐ 3500K - Product number + **K35**  
☐ 3000K - Product number + **K3**  
☐ 2700K - Product number + **K27**

**BEGA** can supply you with suitable LED replacement modules for up to 20 years after the purchase of LED luminaires - see website for details

**Finish**  
All BEGA standard finishes are matte, textured polyester powder coat with minimum 3 mil thickness.

Available colors ☐ Black (BLK) ☐ White (WHT) ☐ RAL:  
☐ Bronze (BRZ) ☐ Silver (SLV) ☐ CUS:



LED linear ceiling and wall luminaire - unshielded				
	LED	A	B	C
24320	ADA 48.0W	59 1/4	2 3/8	3 3/4

Type:  
BEGA Product:  
Project:  
Modified:



