

Werner, Jeffrey B

From: Werner, Jeffrey B
Sent: Thursday, May 31, 2018 2:37 PM
To: 'Kirk Smith'
Cc: Mess, Camie
Subject: 1106 W. Main St. Renewal - sidewalk cafe area
Attachments: 1106 West Main Renewal sidewalk cafe area Design Review Approval 31 May 2018.pdf

Kirk:
Everything you submitted looks fine and is acceptable for the proposed café space.
See the attached for specifics and let me know if any questions,

Jeff

Jeff Werner, AICP
Historic Preservation and Design Planner
City of Charlottesville
Neighborhood Development Services
City Hall | P.O. Box 911
610 East Market Street
Charlottesville, VA 22902
Phone: 434.970.3130
Email: wernerjb@charlottesville.org

May 31, 2018

Renewal Side Walk Café

1106 West Main Street

Approval of outdoor furniture and café railing

- Café Area: Extending into the sidewalk area, café space must not exceed 9'-4" from the face of the building, per the approved Site Plan for 1106 West Main. The attached plan shows 7'11-1/4", within the maximum space allowed. The length along sidewalk not to exceed 59'-8" as shown on the attached plan.
- Tables: Square top with stained wood planks in black metal frame (see attached photo) on metal stands. (Similar to tables approved for 852 West Main.)
- Chairs: Black, faux whicker (See attached photo.) (Similar to chairs approved for 315 West Main.)
- Planters: 20" x 20" x 42" *Santiago*, fiberglass planters. (See attached photo). Color: Metallic Silver. Note: this color simulates concrete. (Similar to planters approved for 315 West Main, different color.)
- Plants: Low, seasonal plantings; no trees. (Refer to container plantings approved for 852 West Main.)
- Umbrellas: (See attached photo.) Must be single pole. Fabric to be single color (dark or neutral), compatible with furniture, all matching, no signage or lettering.
- Railing: (See attached drawing.) Metal railing to be painted black. Planters will be used in lieu of bollards. (Railing is similar to other, simple railings approved for other Main Street locations.)
- Signage: Exterior signage to be addressed under separate application.
- Lighting: No new lighting proposed.

Attached: pages numbered 1 through 12, dated 5/31/2018; four sheets re: landscaping at 315 West Main.



Jeff Werner, AICP
Historic Preservation and Design Planner
City of Charlottesville
Neighborhood Development Services
City Hall | P.O. Box 911
610 East Market Street
Charlottesville, VA 22902
Phone: 434.970.3130
Email: wernerjb@charlottesville.org



R | E | N | E | W | A | L



Brand Image Guidelines



5/31/2018

RENEWAL 1106 W. MAIN

2



5/31/2018

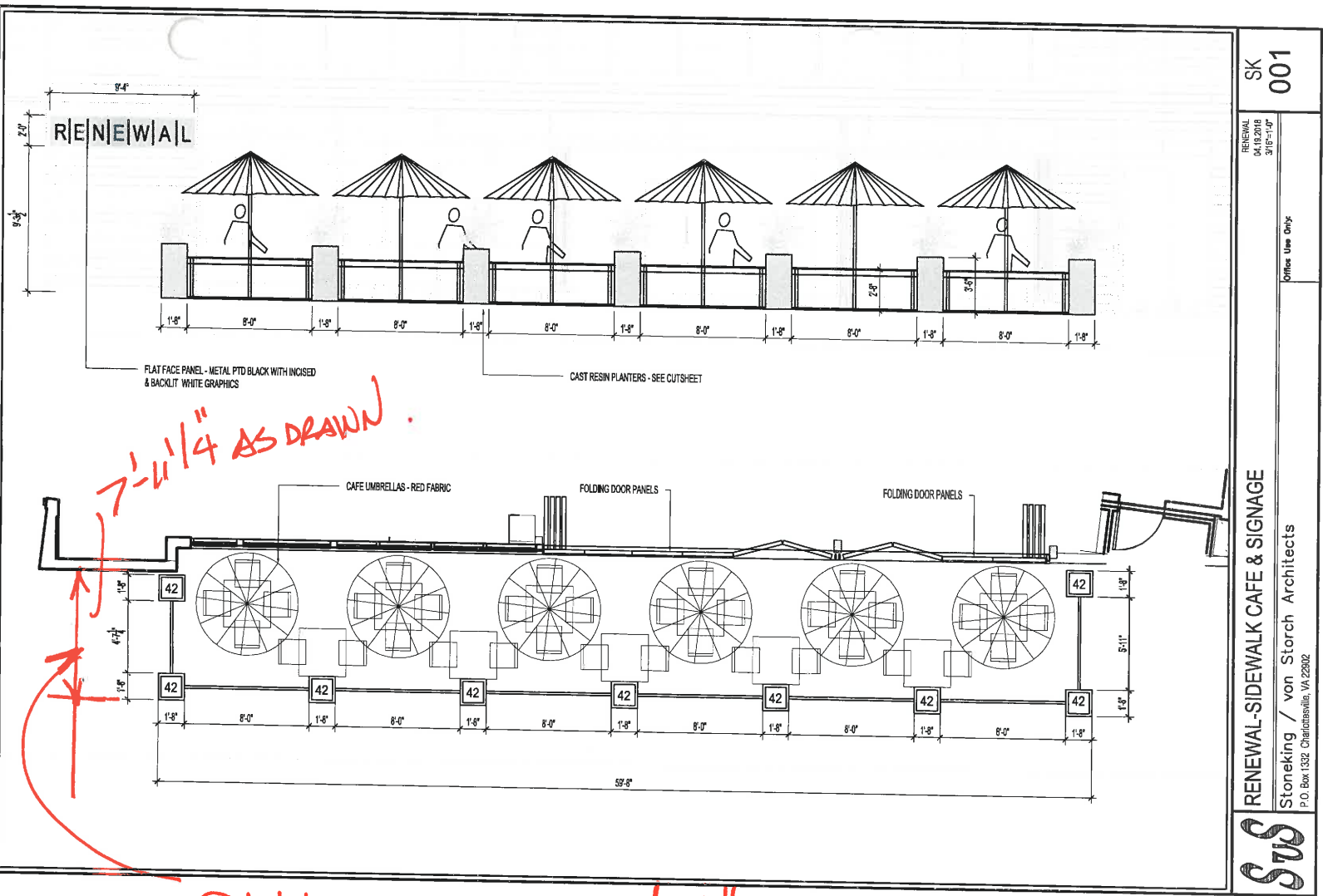
RENEWAL



5/31/2018

RENEWAL

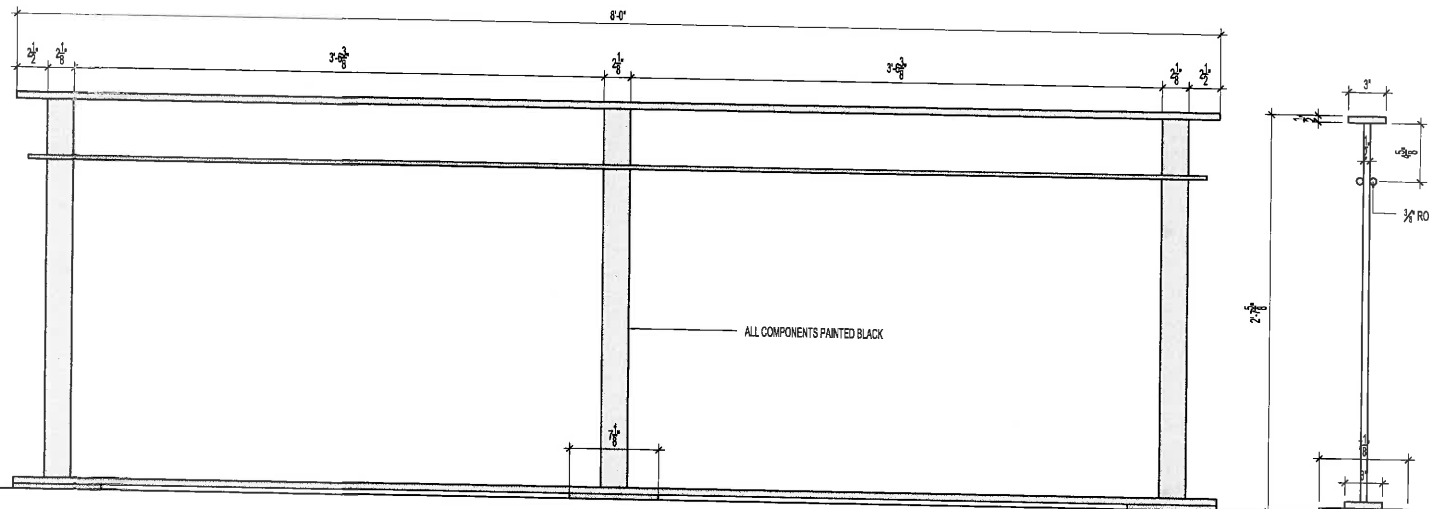
4



CANNOT EXCEED 9'-4"
SEE APPROVED SITE PLAN FOR 1106 W. MAIN

5/31/2018

RENEWAL



SUS

RENEWAL-SIDEWALK CAFE ABC RAILS

Stoneking / von Storch Architects
P.O. Box 1332 Charlottesville, VA 22902

RENEWAL
04.13.2018
3/10-11:00

Office Use Only

SK
002

- RAILING SHALL BE METAL, PAINTED BLACK
- PLANTERS WILL BE USED IN LIEU OF BOLLARDS

5/31/2018

RENEWAL

6



Santiago Tall Square Fiberglass Planter – 69150

Not many other tall planters are as sleek, as elegant or as sophisticated as our Santiago Tall Square Fiberglass Planter. The single column design is ultra modern, stylishly timeless and exquisitely chic.

We take pride knowing that we are able to provide the strongest and most durable planter containers. Our team is able to deliver the top quality you need because we make these planter boxes out of a premium quality fiberglass. Unlike plastic, this sturdy material is frost-resistant, chip-proof and recommended for either indoor or outdoor use.

Grab yourself one of these tall square planters to use as a large outdoor garden planter, a patio planter or as a decorative indoor planter. With a clean and simple, yet slightly contemporary design, these square flower planters will look great scattered around your garden, displayed on your outdoor deck, dotting your entryway or showcased in your atrium.

Our Santiago tall planter pots are available in three sizes as well as many different colors and finishes, allowing you to create your own custom planters. The matte white planters and the matte charcoal or black planters are recommended for most residences or commercial properties, while the colorful ones are fun to decorate any space with.

[Pdf Specification Sheet](#)

[See Color Finish Options](#)

7

Dimensions

20 x 20 x 42 in. (ID: 69150,20)

5/31/2018

RENEWAL

**Style #69150
santiago**



Designs that embody style, form and function.

Style #69150 santiago

color per submitted sample

Weights:

69150.12	TBD lbs
69150.16	TBD lbs
69150.20	TBD lbs

Exterior Dimension

12" x 12" x 24"
16" x 16" x 32"
20" x 20" x 42"

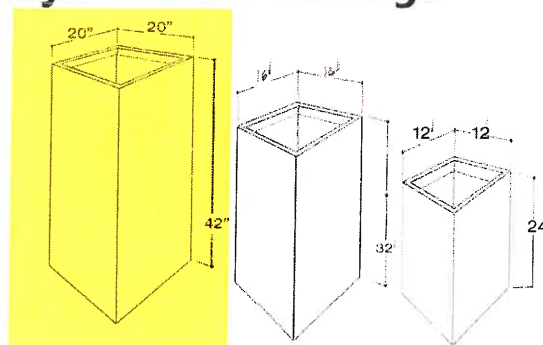
Interior dimensions:

10" x 10"
14" x 14"
18" x 18"

Lip:

L 2"

Please note that the sizes may vary by up to 2% of noted dimensions and weights are approximations.



Jay Scotts offers 16 standard colors and has the ability to custom match over 3,000 colors. Call us today for more information and pricing.

Jay Scotts Collection | 410 SW 4th Terrace | Dania Beach, FL 33004 | Tel: 954-922-3939 | Web: www.jayscotts.com
Committed to "EXCELLENCE" as your Global Source for Design Innovation.

Copyright © 2009-2015 Jay Scotts Company, all rights reserved

5/31/2018

RENEWAL

8



Color Finish Options



MCH
Matte Charcoal



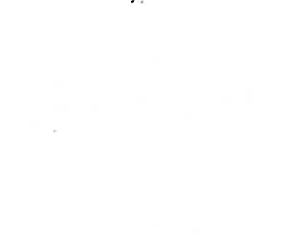
MWH
Matte White



MDB
Matte Brown



MBK
Matte Black



GWH
Gloss White



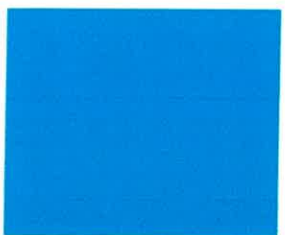
SBE
Satin Beige



MBZ
Matte Bronze



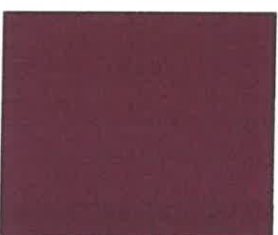
MCB
Matte Cobalt Blue



SSG
Satin Sea Foam



SGR
Satin Green



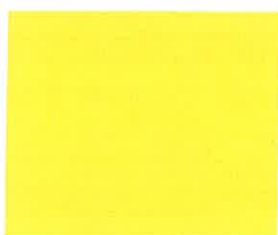
GEG
Gloss Eggplant



GRD
Glossy Red



GTG
Gloss Tangerine



GSF
Gloss Saffron



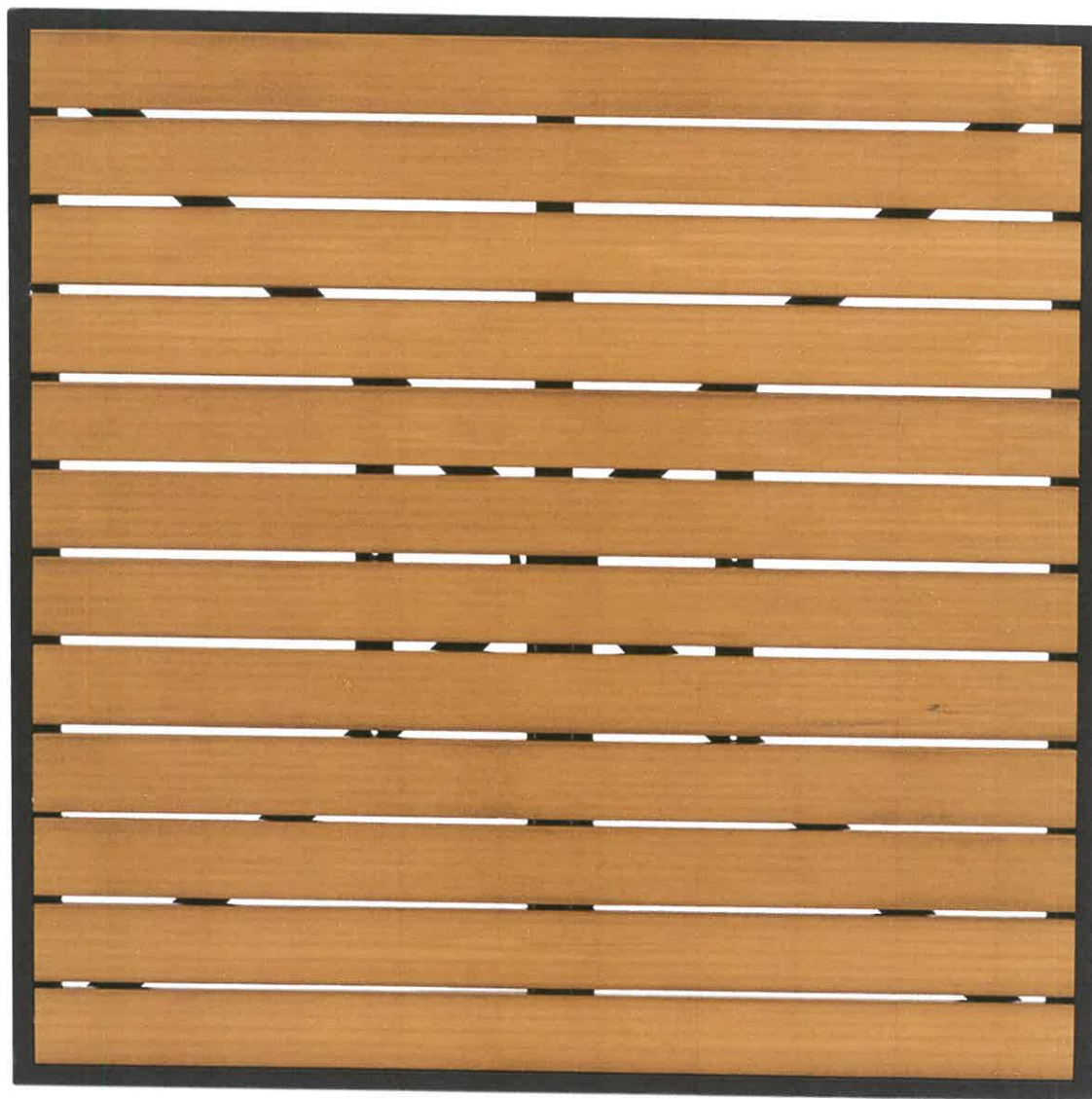
BRZ
Metallic Bronze



SLV
Metallic Silver

Tabletop Planters available ONLY in the following 5 Standard Colors: Matte Black • Matte White • Matte Charcoal • Matte Dark Brown • Metallic Silver
Custom colors - call for details.

110



5/31/2018

RENEWAL

TABLES

10



TablesChairsBarstools.com

5/31/2019

RENEWAL

11



RENEWAL

SIDEWALK CAFÉ UMBRELLA COLOR

- ALL UMBRELLAS MUST MATCH.
- UMBRELLAS MUST BE SINGLE COLOR DARK OR NEUTRAL & COMPATIBLE W/ FURNITURE
- NO TEXT, SIGNAGE, OR LOGOS ON UMBRELLAS
- SINGLE POLE UMBRELLAS ONLY

5/31/2018

RENEWAL

12

CONTENTS

- COVER
- CONTENTS
- APPROVED PLAN (FEB 2013)
- DEVELOPER’S SITE PLAN
- WOB PATIO SITE PLAN
- MODEL IMAGES
- DETAILS
 - FENCNG
 - PLANTERS
 - FURNITURE
 - FIRE TABLES
 - LOUNGE
 - TABLE TOP
 - TABLE BASES
 - CHAIRS
 - LIGHTING
 - POLE
 - UPLIGHTING
 - STRING
 - CABLE SYSTEMS
 - HEATING
 - BAMBOO
 - MEXICAN PEBBLES
 - PERGOLA
 - SIGNAGE



PROJECT #: 112085.00
DRAWN BY: JH
CHECKED BY: CF

Niles Bolton Associates Inc.

One Buckhead Plaza
Suite 800
Atlanta, GA 30305
Phone: 404-365-7600
Fax: 404-365-7602
nba@nilesbolton.com



SET ISSUE / REVISION

PRICING SET	01/28/13
PERMIT SET	02/11/13

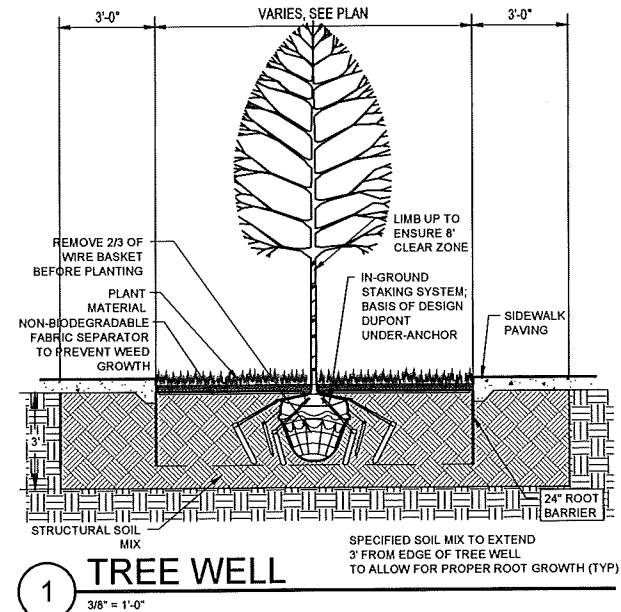
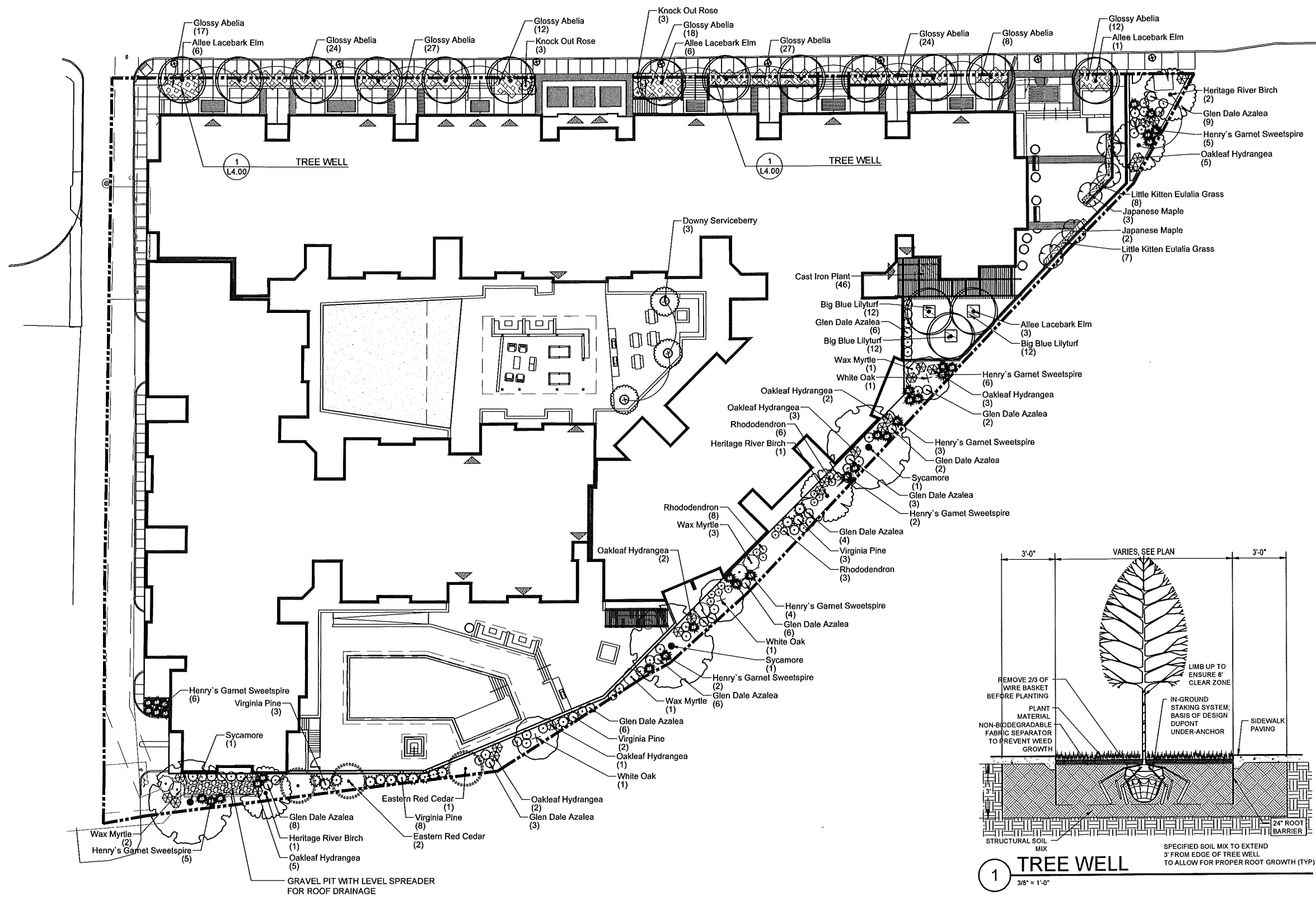
CHARLOTTESVILLE
THE PLAZA ON WEST MAIN
852 WEST MAIN STREET
CHARLOTTESVILLE, VIRGINIA
DEVELOPMENT BY



PLANTING PLAN

L4.00

DATE: 02-11-2013



1

PLANTING PLAN
SCALE: 1" = 20'-0"

RELEASED FOR CONSTRUCTION

