

734 Locust Avenue



TM/P: 51/73 DHR: 104-5144-0098

Other DHR Id #: 104-0075

Primary Resource Information: Single Dwelling, Stories 1.50, Style: Late 19th and Early 20th Century American Movement, ca 1901

August 2007: Named after its original owners, this house was built in 1901 by Sextus A. Eddins. The one-story, three-bay, brick house has a hipped-roof with a porch that has a wide, hipped roof stretching across the entire facade and portions of the north and south elevations, before terminating against the stepped and side-gabled extension of both side elevations. Two low concrete steps approach the porch and has square Tuscan posts with chamfered edges. The door is located off-center in the central bay with a transom above and segmental surround, while each of the other two bays of the 1st floor has a single window. The south bay is oversized and projects slightly beyond the main body of the facade. Other entranceways with segmental surrounds and transoms face westward onto the porch in the north and south extensions. A low-pitched cross gable tops the south bay of the facade with its own single window and an undecorated bargeboard. A gabled dormer peeks out of the roof above the front door with a finial in the center of the gable, while another faces westward on the roof of the north extension; each of the windows are one/one-sash. The main roof is covered in asphalt shingles, while the porch roof covered in metal. A one-story brick extension is attached to the rear of the house and is flush with the north elevation and extends beyond the south elevation. The brick is laid in common bond.

Individual Resource Status: **Single Dwelling**
Individual Resource Status: **Stable**

Contributing Total: 1
Contributing Total: 1

737 Locust Avenue



TM/P: 51/25 DHR: 104-5144-0099

Primary Resource Information: Single Dwelling, Stories 2.00, Style: Late 19th and Early 20th Century American Movement, 1917

August 2007: Along with 731 Locust Avenue next door, the estate of John A. Smith built this two-story, three-bay, hipped-roof brick dwelling in 1917. The house has central cross gables flush with the facade and north elevation and a projecting, gabled wing on the south elevation. A shed-roofed porch supported by slender Tuscan columns stretches the entire length of the facade and around the south elevation before terminating against the south wing with an addition entrance and transom. The main entrance is located in the slightly off-center central bay and has sidelights and a four-light transom, while both the north and south bays have single, one/one-sash windows. All three bays of the 2nd story have single windows, though the central bay is again off-center; all of the windows are topped with plain concrete lintels. Each of the gables has a boxed cornice and return and a louvered window in the center. All of the windows have louvered shutters, the brick is laid in seven-course American bond, the roof metal, and a brick chimney is visible.

Individual Resource Status: **Single Dwelling**

Contributing Total: 1

801 Locust Avenue



TM/P: 51/23 DHR: 104-5144-0100

Primary Resource Information: **Single Dwelling, Stories 2.00, Style: Bungalow/Craftsman, 1928**

August 2007: This two-story, three-bay, side-gabled Bungalow-Craftsman is almost entirely hidden from sight on Locust Avenue due to a large wooden privacy fence. Anna E. Roberts built the house in 1928. The painted, common bond brick house has a symmetrical facade with single windows occupying both the north and south bays and a single door in the center. A large, front-gabled porch shelters the doorway and two windows and has battered wooden piers supported on brick plinths, stucco fill on the pediment, and a prominent overhanging eave. A brick chimney is attached to the south elevation, emerges out of the asphalt shingle roof, and is flanked to the west by a small, gabled-roof portico that shelters an additional entranceway. Due to the way the lot slopes downhill to the west, the house has a full two-story rear elevation, while only a single story is visible at the facade. The rear of the building is a two-story porch that has been altered to make additional enclosed living space and a one-story, frame, shed-roofed addition is located on the northern side of the rear of the house.

Individual Resource Status: **Single Dwelling**

Contributing Total: 1

803 Locust Avenue



TM/P: DHR: 104-5144-0101

Primary Resource Information: Single Dwelling, Stories 2.00, Style: Other, 2007

August 2007: This two-story, three-bay house is currently under construction. It has a hipped roof with a large, hipped-roof cupola, and a full basement and a porch to the rear.

Individual Resource Status: Single Dwelling *Non-Contributing Total: 1*

805 Locust Avenue



TM/P: 51/21

DHR: 104-5144-0102

Primary Resource Information: Single Dwelling, Stories 2.00, Style: Late 19th and Early 20th Century American Movement, 1950

August 2007: Very similar to 724 Locust Avenue, this two-story, three-bay side-gabled, common bond brick dwelling was built in 1950 by John F. Marshall, Jr., a serviceman for Hundley Machines, and his wife, Joy Cerney Marshall. It is distinguished by a very steep roof and a central, cross-gabled bay that projects slightly and has a swooping, asymmetrical shape with bargeboard marking the entrance. The door is located in the center of this bay, is topped by a flat arch, and has a small four/four-sash window with a flat arch above in the peak of the gable. The other two 1st story bays have eight/eight-sash windows topped with flat arches, and are mirrored on the 2nd story by frame, gabled dormers with six/six-sash windows. An asymmetrically stepped, brick chimney emerges out of the roof of the central cross gable and is attached to the front of the house. Because of the slope of the lot, the building has a full basement to the rear. A one-story frame porch shelters an entrance in the north elevation and has a balcony above.

Individual Resource Status: **Single Dwelling**

Contributing Total: 1

807 Locust Avenue



TM/P: 51/20

DHR: 104-5144-0103

Primary Resource Information: Single Dwelling, Stories 2.00, Style: Late 19th and Early 20th Century American Movement, ca 1955

August 2007: A two-story, side-gabled dwelling with a steep roof and a projecting, cross-gabled wing on the north side of the east-facing facade, 807 Locust was built of brick laid in common bond by John F. Marshall and Buford Melone Marshall in 1955. While John F. Marshall lived next door, his brother Buford lived in this house. The main body of the house has two bays, the south bay occupied by a paired one/one-sash windows, the other by a single door. A porch created by an extension of the gabled roof shelters this window and doorway, abutting the projecting wing and sheltered by the main roof. It is carried by metal cutout supports. The projecting wing has an one/one-sash window on the first floor and a small one/one-sash window in the peak of the gable, both with flat arches, and an undecorated bargeboard. A brick chimney is attached to the south elevation and is flanked by a small porch that leads to an addition entranceway. Like its neighbor to the south, this building has a full basement due to the slope of the lot.

Individual Resource Status: **Single Dwelling**

Contributing Total: 1

809 Locust Avenue



TM/P: 51/19

DHR: 104-5144-0104

Primary Resource Information: Single Dwelling, Stories 1.00, Style: Late 19th and Early 20th Century American Movement, ca 1947

August 2007: This one-story, five-bay, stucco-finished, side-gabled house has a frame addition to the north elevation and a screened-in porch attached to the south elevation. Each of the two side bays has a single six/six-sash window with shutters and the door occupies the central bay. The roof is covered in asphalt shingles and a brick chimney is visible on the rear of the house.

Evelyn Hasher Perkins constructed the dwelling between 1947 and 1949.

Individual Resource Status: **Single Dwelling**

Contributing Total: 1

810 Locust Avenue



TM/P: 51/74

DHR: 104-0005

Other DHR Id #: 104-5144-0105

Primary Resource Information: Single Dwelling, Stories 2.00, Style: Georgian, ca 1840
Architecture Summary: Locust Grove is a fine example of the survival of 18th century Georgian forms well into the 19th century. Characteristically, the house is five bays wide, 2 stories high, with a hipped tin roof and end chimneys. The entrance is sheltered by a formal portico of coupled paneled columns. The brick walls are laid in common bond, the wooden cornice is very simple, and the window and door architraves are not treated with moldings. To preserve the effect of symmetry, blind windows are fitted into the north and south sides. End Architecture Summary Additions and alterations: End Additions and alterations Interior Description: The interior is based on the double pile plan with a fine double run stair. All the mantels are identical, simple Greek revival designs. The high basement houses a rare set of double parlors, one of which served as a dining room.
August 2007: The Greek Revival brick dwelling stands on the largest lot in the District and is shaded from the street view by enormous boxwoods. It was constructed between 1840 and 1844 as the plantation house for the Sinclair family's 500-acre farm, which included most of the Martha Jefferson Historic District. The house is built of brick in common bond and has five bays across its two stories. A hipped metal roof is terminated on each end by a chimney. The central bay is marked by the doorway, which is flanked

by sidelights and an undecorated transom. A small, balconied porch with paired paneled Tuscan columns shelters the entrance. The columns are complemented by a simple entablature, as well as an additional wooden, paneled balcony above. The shuttered, six/six-sash windows that occupy each of the other bays are enclosed by undecorated surrounds.

<i>Individual Resource Status:</i> Single Dwelling	Contributing Total: 1
<i>Individual Resource Status:</i> Smoke/Meat House	Contributing Total: 1
<i>Individual Resource Status:</i> Kitchen	Contributing Total: 1
<i>Individual Resource Status:</i> Shed	Non-Contributing Total: 1

813 Locust Avenue



TM/P: 51/18

DHR: 104-5144-0106

Primary Resource Information: Single Dwelling, Stories 1.00, Style: Late 19th and Early 20th Century American Movement, 1951

August 2007: Engineer J. R. Mullinax built this one-story, side-gabled, common-bond brick dwelling in 1951. It is very similar to 807 Locust. It has a projecting, cross-gabled wing with a single eight/eight-sash window with louvered shutters on the northern end of the east-facing facade. The doorway is roughly in the center of the facade, sandwiched between the north wing and a large, asymmetrically stepped brick chimney attached directly to the facade. A small, shed-roofed awning shelters the doorway. Another eight/eight-sash window flanks the chimney to the south and a side-gabled, brick addition with a frame elevation and paired six/six-sash windows is attached to the south elevation.

Individual Resource Status: **Single Dwelling**

Contributing Total: 1

815 Locust Avenue



TM/P: 51/16

DHR: 104-5144-0107

Primary Resource Information: Single Dwelling, Stories 2.00, Style: Late 19th and Early 20th Century American Movement, 1954

August 2007: Seamstress and UVA Housemother L. Pearl Brown built this one-story, three-bay common-bond, brick cottage has a steep side-gabled roof and a prominent brick chimney attached to the north elevation. The central bay features the doorway flanked by fluted pilasters and a simple architrave. The north and south bays of the east-facing facade each have eight/eight-sash window with louvered shutters.

Individual Resource Status: **Single Dwelling**

Contributing Total: 1

824 Locust Avenue



TM/P: 51/85

DHR: 104-5144-0108

Primary Resource Information: Single Dwelling, Stories 2.00, Style: Late 19th and Early 20th Century American Movement, 1916

August 2007: Constructed in 1916 by Nevil G. Henshaw after John M. White's estate split off the lot from the Locust Grove plantation house's parcel, this two-story, three-bay, hipped-roof, cube-shaped dwelling has a hipped-roofed porch supported by square Tuscan columns marking the entrance in the central bay. The north and south bays of the west-facing facade's 1st floor each have an oversized, one/one-sash window with segmental surrounds and arches. All three bays on the 2nd story also have single one/one-sash windows with segmental surrounds and arches and all of the windows on the house have louvered shutters. The roof has a deep eave with exposed rafter ends and no cornice, and both the roof of the main house and of the porch are made of metal. The central bay is continued onto the roof with a frame, hip-roofed dormer with two one/one-sash windows. There are two chimneys visible.

Individual Resource Status: **Single Dwelling**

Contributing Total: 1

833 Locust Avenue



TM/P: 51/15

DHR: 104-5144-0109

Primary Resource Information: Single Dwelling, Stories 2.00, Style: Late 19th and Early 20th Century American Movement, 1930

August 2007: A two-story, three-bay, hipped-roof brick American Foursquare laid in common bond, this house was built in 1930 by blacksmith C. J. Theimer. A hipped-roof porch covered in asphalt shingles stretches across the entire facade and supported by four battered Tuscan piers on brick plinths distributed symmetrically. A single door occupies the south bay of east-facing facade's 1st floor, while two windows occupy the other two first floor. The two bays of the 2nd floor have single windows topped by flat arches and all windows are nine/nine-sash. The hipped roof is covered in asphalt shingles and has a central, hipped-roof dormer with two casement windows. Two brick chimneys are visible towards the rear of the house.

Individual Resource Status: Single Dwelling

Contributing Total: 1

Individual Resource Status: Shed

Contributing Total: 1

834 Locust Avenue



TM/P: 51/88

DHR: 104-5144-0110

Primary Resource Information: Multiple dwelling, Stories 2.00, Style: Late 19th and Early 20th Century American Movement, 1898

August 2007: The Michie-Morris House is named for its initial owner, Hay Watson Michie, who built the house in 1898. Michie was the wife of G. R. B. Michie, an investor in the Locust Grove Investment Company, and purchased the property before the area was platted by the development company. After the Michies moved to The Farm in 1909, they sold this house to the Morris family. The two-story, three-bay, hipped-roof, frame house has a rectangular projecting bay on the north elevation and semi-hexagonal bays projecting off-center on the facade and south elevation. It is set on a low brick foundation. Twin porches on coupled, slender Tuscan columns on wooden plinths shade the 1st floor of the recessed, two-bay, northern portion of the facade abutting the projecting bay and also the southwest corner of the house. This porch is partly filled in to serve as a sunroom and has a door with a transom, a window, and pilasters that face the street. The porches have block modillions. The double, glass front door with a single-light transom is centrally located in the recessed portion of the house, abutting the semi-hexagonal bay, and is flanked by an additional doorway. Two windows occupy the space above. There is a single window on each side of each floor of the projecting bay; all windows in the house are one/one-sash with louvered shutters. The gables each have a full pediment with a bargeboard, pressed tin infill, and a fanlight with tracery and a dentil course below in the center of the pediment; brackets support the overhanging edges of the pediment. The high-pitched hipped roof is metal and has Philadelphia gutters and projecting eaves. Two chimneys are visible and an additional porch is attached to the north elevation.

Individual Resource Status: **Multiple dwelling**

Individual Resource Status: **Guest House**

Individual Resource Status: **Shed**

Contributing Total: 1

Contributing Total: 1

Contributing Total: 2

841 Locust Avenue



TM/P; 51/14

DHR: 104-5144-0111

Primary Resource Information: Single Dwelling, Stories 2.00, Style: Late 19th and Early 20th Century American Movement, 1936

August 2007: This two-story, three-bay dwelling is unique within the District both for its steep gambrel roof overlaid with a plain side-gabled roof and for its stone-finished 1st story. William Diah Wheeler built the house in 1936. The first story of the facade is sheltered by a porch supported by four Tuscan columns and sheltered by an extension of the gambrel shape of the roof. The door is located in the south bay of the east-facing facade, while the central and north bays have single six/six-sash windows. The 2nd floor has a single six/six-sash window with shutters in each bay and the shutters have a cutout, abstracted tree pattern in their upper panels. While the 1st story is finished in stone, the 2nd story has frame siding. The roof is covered in asphalt shingles and gabled in profile, but the side elevations also reveal the outlines of a gambrel roof. The north elevation also has a finely crafted stone chimney. A one-story frame addition is attached to the rear of the building and is flush with the north elevation.

Individual Resource Status: **Single Dwelling**

Contributing Total: 1

Individual Resource Status: **Garage**

Contributing Total: 1

843 Locust Avenue



TM/P: 51/13.100

DHR: 104-5144-0112

Primary Resource Information: Single Dwelling, Stories 2.00, Style: Late 19th and Early 20th Century American Movement, 1929

August 2007: L. A. Capelle, a yard conductor for the C&O Railroad, built this house in 1929 with his wife, Mary Capelle. This two-story, two-bay, hipped-roof American Foursquare is brick laid in common bond. A hipped-roof porch supported by four brick piers shelters the door on the south bay of the east-facing facade, while a single window occupies the north bay. Both of the 2nd story bays have single, shuttered windows and all of the windows in the house are four/one-sash and are topped with flat arches. The roof is covered in asphalt shingles, has a deep eave, and features a hipped-roof dormer with two small casement windows. A single chimney is visible on the northern side of the house. A frame addition extends the rear of the dwelling.

Individual Resource Status: Single Dwelling

Contributing Total: 1

849 Locust Avenue



TM/P: 51/12

DHR: 104-5144-0113

Primary Resource Information: Single Dwelling, Stories 2.00, Style: Late 19th and Early 20th Century American Movement, 1936

August 2007: This two-story, three-bay, side-gabled, brick dwelling laid in common bond has a hipped-roof porch that stretches across the entire facade and was built in 1936 by traveling fireman N. L. Britton and his wife, Bertha Britton, in 1936. Four Tuscan columns with a simple balustrade support the porch. The entrance is in the center bay, with a single door with sidelights. The other two bays on the 1st floor of the east-facing facade have single six/six-sash windows. The north and south bays of the 2nd story have single six/six-sash windows, while the central bay has a slightly smaller version; all of the windows on the 2nd story have louvered shutters. The roof has a simple cornice and is covered by asphalt shingles. A brick chimney is attached to the north elevation and a frame addition is flush with the north elevation as well.

Individual Resource Status: **Single Dwelling**

Contributing Total: 1

850 Locust Avenue



TM/P: 51/89

DHR: 104-5144-0114

Primary Resource Information: Single Dwelling, Stories 2.00, Style: Late 19th and 20th Century Revivals, 1927

August 2007: The Georgian Revival-style, three-bay house is brick with American bond and a Flemish header course. J. Dean Tilman built the stately house in 1927; Tilman was president of City Mortgage and Insurance CO., Inc. and the City Finance and Thrift, Co., as well as Vice President of the National Bank of Charlottesville and partner in the dry goods store J. D. and J. S. Tilman. The building has a side-gable, slate tile roof with brick chimneys attached to each end. The house features a large balconied entry porch on the central bay, approached by three concrete steps. Supported by slender Tuscan columns paired to either side of a semi-circular projection that marks the entranceway, the porch has a plain, Tuscan entablature. The door has fluted pilasters, sidelights, and an elliptical fanlight. The balcony above has a balustrade with finials in line with each of the columns below. Each of the side bays on both stories has a single window, as does the 2nd story's central bay; all of the windows are 8/eight-sash windows and have partially louvered shutters that feature a moon shape cutout on the upper portion. Windows on the 1st floor are topped with flat arches, while the fenestration on the 2nd floor abuts the dentils of the cornice. Modillions and a cornice with dentils adorn the slightly projecting roofline. Three gabled dormers align themselves with the bays below and feature circular-headed windows. The house also includes an original sunroom attached to the south elevation; it has six/one-sash windows across all three elevations, a simple architrave, and a metal balcony balustrade above. The side elevations include two windows arranged symmetrically on each story and half-moon windows to either side of the chimneys on the third floor. The back of the building extends beyond the main rectangular mass of the house, while the east corner of the north elevation has a small extension featuring an oval-shaped windows.

Individual Resource Status: **Single Dwelling**

Individual Resource Status: **Garage**

Contributing Total: 1

Contributing Total: 1

851 Locust Avenue



TM/P: 51/11.100

DHR: 104-5144-0115

Primary Resource Information: Single Dwelling, Stories 2.00, Style: Late 19th and Early 20th Century American Movement, 1917

August 2007: Nannie W. Tilman built this house this two-story, three-bay, hipped-roof, seven-course American-bond brick dwelling in 1917. It has a hipped-roof porch that shelters the two-bay 1st floor. The porch is approached by a single step and supported by four freestanding and two attached Tuscan columns. The doorway is located in the north bay of the east-facing facade and features sidelights and a three-light transom, while the south bay has only a single, oversized one/one-sash window. The north and south bays of the 2nd floor each have a single one/one-sash window with louvered shutters and segmental surrounds. Sandwiched in between the two bays of the 2nd story is a set of narrow, one/one-sash windows that share a segmental surround and arch, as well as louvered shutters. The roof has a prominent cornice and a central, flush cross gable with a boxed cornice and return and a single fanlight in the center. Both the roofs of the house and of the porch are metal and a brick chimney is attached to the south elevation. A two-story, hipped-roof brick wing is attached to the north elevation and a semi-hexagonal bay projects beyond the south elevation.

Individual Resource Status: **Single Dwelling**

Contributing Total: 1

Individual Resource Status: **Secondary Structure** **Non-Contributing Total: 1**

853 Locust Avenue



TM/P: 51/10

DHR: 104-5144-0116

Primary Resource Information: Single Dwelling, Stories 2.00, Style: Late 19th and Early 20th Century American Movement, 1922

August 2007: Almost identical to its neighbor at 855 Locust Avenue, this three-bay, hipped-roof, seven-course American-bond brick dwelling was built in 1922 by John N. Page, secretary for the Charlottesville Real Estate Exchange, and his wife Roberta C. Page. The Pages also built the house next door at 855 Locust Avenue. The house has a hipped-roof porch that shelters the 1st floor. The porch is approached by a single step and supported by freestanding and engaged Tuscan columns with a simple balustrade. The doorway is located in the central bay of the east-facing facade and features sidelights and an elliptical fanlight with tracery, while the other 1st floor bays have only single one/one-sash windows. The north and south bays of the 2nd floor each have a single one/one-sash window with louvered shutters and segmental surrounds. The facade has a central cross gable with a boxed cornice and return and a single louvered window in the center. Both the roof of the house and of the porch is metal and a brick chimney is visible.

Individual Resource Status: **Single Dwelling**

Contributing Total: 1

854 Locust Avenue



TM/P: 51/92

DHR: 104-5144-0117

Primary Resource Information: Single Dwelling, Stories 2.00, Style: Other, 1903
August 2007: Set far back from the street on a large lot and shaded by mature trees, this two-story, two-bay, house is named for John S. White, the real estate lawyer in partnership with William F. Long, who built the house in 1903. It has a hipped roof and is constructed of brick laid in common bond and painted. The north bay of the facade projects slightly and has a full pediment filled in with fish scale shingles; a hipped-roof, semi-hexagonal bay is attached to the north elevation; and a two-story, hipped-roof, two-bay addition is attached to the south elevation, set back from the facade and facing the street. A hipped-roof porch with slender Tuscan columns shades the recessed south bay and abuts the north bay of the facade. The south bay features the double glass doorway and a two-light transom. The 2nd floor of the south bay has a pair of narrow one/one-sash windows. The north bay features a single two/two-sash window on the 1st floor and a narrower one/one-sash window on the second. All of the windows have louvered shutters. The fully pedimented gable of the north bay retains the overhanging eave and cornice that characterizes the rest of the building, is filled in with wooden fish scale shingles, and has a small fanlight at its center. The roofs of both the porch and the house itself are covered in asphalt shingles. A modern, wooden ramp leads to the front entrance from the north side of the house. A one-story kitchen wing and a back porch are attached to the rear of the house.

Individual Resource Status: **Single Dwelling**

Contributing Total: 1

Individual Resource Status: **Garage**

Contributing Total: 1

Individual Resource Status: **Secondary Structure**

Contributing Total: 1

855 Locust Avenue



TM/P: 51/8

DHR: 104-5144-0118

Primary Resource Information: Single Dwelling, Stories 2.00, Style: Late 19th and Early 20th Century American Movement, 1922

August 2007: Also built by John N. and Roberta S. Page in 1922, this two-story, two-bay, cross-hipped-roof house is constructed of brick laid in common bond. The massing created by the cross-hipped roof allows the porch to stretch across the entire facade and wind around the north elevation to terminate against the recessed portion of the facade with an additional entrance. The porch is supported by Tuscan columns, has a simple balustrade, is approached by one shallow step, and has a hipped roof. The door is located in the north bay of the east-facing facade has sidelights and an elliptical fanlight. A casement window sits to the north of the door, while a single window occupies the south bay. Both of the bays of the 2nd story also have single windows, and all windows in the house are one/one-sash with segmental surrounds. The facade has a flush central cross gable with boxed cornice and return and a brick stringcourse that visually continues the prominent cornice with deep eaves that runs around the entire roofline. The roofs of both the porch and the house itself are covered in asphalt shingles and two chimneys are visible. Because of the way that the lot slopes westward, the stuccoed foundation of the house is visible on the side elevations and the house's basement may be accessed at the rear of the building.

Individual Resource Status: **Single Dwelling**

Contributing Total: 1

857 Locust Avenue



TM/P: 51/7

DHR: 104-5144-0119

Primary Resource Information: Single Dwelling, Stories 2.00, Style: Late 19th and Early 20th Century American Movement, 1938

August 2007: While this two-story, five-bay house looks small from the street, the grade of the rear of the lot allows for a full lower story. Helen L. Haden constructed it in 1938 and she continued to live in the house until 1999. The house is side-gabled and constructed of multi-colored bricks laid in common bond. The facade has a porch with graceful segmental arches springing from four freestanding and two engaged Tuscan columns and topped by a balcony with chinoise railing above. It shades the central three bays of the facade, each of which features a six/six-sash window topped by a jack arch. The door is located in the central bay with a narrow transom and jack arch. The roof has three gabled, frame dormers. A chimney emerges out of each end of the asphalt shingle-covered roof and the house has a one-story addition to the rear. A finely crafted stone retaining wall runs along the driveway and attaches to the south elevation.

Individual Resource Status: **Single Dwelling**

Contributing Total: 1

Individual Resource Status: **Garage**

Contributing Total: 1

864 Locust Avenue



TM/P: 51/93

DHR: 104-5144-0120

Other DHR Id #: 104-0075

Primary Resource Information: Multiple dwelling, Stories 1.50, Style: Late 19th and Early 20th Century American Movement, ca 1905

August 2007: A 1.5-story, five-bay brick dwelling laid in common bond, this house has a very large front-gabled roof with deep eaves and a bargeboard that is cutout at the apex of the gable and a deep-eaved cross gable on the south elevation that shades a brick, hipped-roof, semi-hexagonal bay. T. M. Hill built the house in 1905, selling it in 1911 to John Z. and Elizabeth Holladay. The house was later broken up into four apartments. The 1st floor of the facade is shaded by a hipped-roofed porch, supported by a series of slender Tuscan columns with a turned balustrade and approached by a series of five wooden steps. The doorway is in the center of the porch with sidelights and a three-light transom, and is flanked to either side by two bays, each with a single one/one-sash window. A small wooden pediment filled with a hatched pattern also marks the central entrance. The 2nd story of the dwelling features only a pair of one/one-sash windows with a segmental surround and a brick segmental arch in the center of the large gable.

Individual Resource Status: **Multiple dwelling**

Contributing Total: 1

Individual Resource Status: **Shed**

Non-Contributing Total: 2

867 Locust Avenue



TM/P: 51/6 DHR: 104-5144-0121

Primary Resource Information: Single Dwelling, Stories 2.00, Style: Late 19th and Early 20th Century American Movement, ca 1893

August 2007: This elaborate, two-story, three-bay, hipped-roof frame dwelling is set on a high brick foundation and is the only house constructed by the Locust Grove Investment Company north of Hazel Street in the 1890s. It was given to investor R. H. Rawlings in 1903, when the company's unsold parcels were dolled out according to the number of parcels each investor possessed. Gabled wings project from the south elevation and on the north side of the east-facing facade and the high-pitched hipped roof has a false gable. The facade features a finely detailed, hipped-roof porch, approached by three wooden steps, supported by a series of turned posts with knobs, and also including a turned balustrade and spools along the porch frieze. The porch abuts the north wing and continues around the south elevation to abut the projecting south wing. The door is located in the central mass of the house and also abuts the north wing. It is flanked by a single two/two-sash window and complemented by another two/two-sash window on the 2nd story. The north wing features a semi-hexagonal bay window with a narrow, one/one-sash window on each of its three sides on the 1st floor and a rectangular bay with two narrow windows on the 2nd story. The north wing has a prominent bargeboard, continues the cornice-line of the rest of the building, and features two small casement windows with a carved wood panel suspended from the gable's apex. The gable is a true pediment and is filled in with fish-scale shingles. The central mass's hipped roof also has a carved wood panel inset at the false gable's peak. A brick chimney is attached to the north elevation.

Individual Resource Status: **Single Dwelling**

Contributing Total: 1

872 Locust Avenue



TM/P: 51/94

DHR: 104-5144-0122

Primary Resource Information: Single Dwelling, Stories 2.00, Style: Late 19th and Early 20th Century American Movement, 1906

August 2007: Reminiscent of Locust Grove and 824 Locust Avenue, this two-story, three-bay, common bond brick house was constructed in 1906 by widow Sallie Rives. The hipped-roof dwelling has a porch that is approached by three low brick steps and stretches across the entire facade, wraps around the north-south elevation, and continues off the south elevation to create a port cochère. The hipped-roof porch is supported by a series of slender Tuscan columns and has a deep overhang with exposed rafter ends. The door is located in the central bay with sidelights and a single-light transom, both retaining original stained glass. A single, oversized, one/one-sash window occupies each of the other two bays of the 1st floor. While the north and south bays of the west-facing facade's 2nd floor have identical one/one-sash windows, the central bay of the 2nd story has a slightly smaller version. All of the windows have louvered shutters. The house has a prominent cornice and the roof overhangs with exposed, oversized rafter ends. The roof is covered in asphalt shingles, features a hipped-roof dormer with two casement windows in the center of the facade, and has a chimney visible on both sides. A small, frame, semi-hexagonal bay window is attached to the 2nd story of the north elevation, while a brick, semi-hexagonal bay emerges out of the south elevation, behind the port cochère and features full-size windows. Both the roof of the porch and the house itself are covered in asphalt shingles. A one-story addition is flush with the north elevation.

Individual Resource Status: **Single Dwelling**

Individual Resource Status: **Shed**

Contributing Total: 1

Contributing Total: 2

874 Locust Avenue



TM/P: 51/95

DHR: 104-5144-0123

Primary Resource Information: Single Dwelling, Stories 2.00, Style: Late 19th and Early 20th Century American Movement, 1925

August 2007: One of the first houses built in the wave of construction on the north end of Locust Avenue where it meets Long Street, this two-story, two-bay, hipped-roof, common-bond brick American Foursquare was built in 1925 by J. E. Mooney, a boilermaker, and sold the same year. It has a shed-roofed porch that stretches across the entire 1st floor of the facade, is approached by four concrete steps with a metal handrail down the center, and is supported by three battered Tuscan piers on brick plinths. A solid brick balustrade connects the piers. The entrance is located in the north bay of the west-facing facade and includes a doorway with sidelights and an elliptical fanlight with tracery. The south bay of the 1st floor features paired one/one-sash windows with a segmental surround and topped by a jack arch. The porch has an undecorated, prominent entablature. The two bays of the 2nd story feature paired one/one-sash windows. The roofs of both the house itself and porch are of metal and a large, frame, hipped-roof dormer with three four/one-sash windows is located in the center of the main roof. A chimney is visible towards the south elevation and a small, one-story, hipped-roof addition with a large three-part bay window is attached to the south elevation, towards the rear of the building. An additional frame porch is attached to the rear of the house, flush with the north elevation.

Individual Resource Status: **Single Dwelling**

Individual Resource Status: **Garage**

Individual Resource Status: **Shed**

Contributing Total: 1

Contributing Total: 1

Non-Contributing Total: 1

876 Locust Avenue



TM/P: 51/96

DHR: 104-5144-0124

Primary Resource Information: Single Dwelling, Stories 2.00, Style: Late 19th and Early 20th Century American Movement, 1927

August 2007: This two-story, three-bay, common-bond brick, hipped-roof version of an American Foursquare has fine details and was built in 1927 by T. M. Donnelley, the superintendent for the Ellioit Ice Co., Inc., and his wife, Jessie C. Donnelley. The entrance is located in the central bay and is shaded by a small, gabled portico that is approached by three shallow steps and supported by four narrow, battered Tuscan piers on brick plinths. The portico has a simple architrave and full pediment and the door has a single-light transom. Each of the four north and south bays of the west-facing elevation has paired six/one-sash windows with flat arches above, while the flat arches of the 2nd story extend around the entire house to create a cornice. The metal roof has a deep overhang and features a hipped-roof dormer with two casement windows in the center. A porch with similar details as that of the entrance portico is attached to the south elevation. A chimney is visible on the southern side of the building.

Individual Resource Status: **Single Dwelling**

Contributing Total: 1

Individual Resource Status: **Garage**

Contributing Total: 1

878 Locust Avenue



TM/P: 51/96

DHR: 104-5144-0125

Primary Resource Information: Single Dwelling, Stories 2.00, Style: Late 19th and Early 20th Century American Movement, 1936

August 2007: Built in 1936 by C&O conductor W. T. Baugh and his wife, Mary E. Baugh, this two-story, two-bay, hipped-roof brick American Foursquare laid in common bond is raised on an exposed concrete foundation. It has a hipped-roof porch that stretches across the entire 1st floor of the west-facing facade and is supported by Tuscan columns and a simple entablature, is approached by four slate steps, and has a simple wooden balustrade. The entrance is located in the south bay and leads to the doorway, complete with sidelights and a flat arch. Both the north bay of the 1st floor and both of the bays of the 2nd floor feature pairs of one/one-sash windows with louvered shutters. A prominent hipped-roof dormer emerges out of the center of the asphalt shingle roof with a pair of three/one-sash windows. The roof is metal.

Individual Resource Status: **Single Dwelling**

Contributing Total: 1

Individual Resource Status: **Secondary Structure**

Contributing Total: 1

881 Locust Avenue



TM/P: 51/4

DHR: 104-5144-0126

Primary Resource Information: Single Dwelling, Stories 2.00, Style: Late 19th and Early 20th Century American Movement, 1925

August 2007: Foreman R. W. Mitchell built this two-story, two-bay, brick American Foursquare laid in common bond in 1925. It has a hipped-roof porch that stretches across the entire 1st floor of the west-facing facade and is supported by freestanding and engaged Tuscan columns and a simple entablature and is approached by three concrete steps. The entrance is located in the north bay and leads to the doorway, complete with sidelights and a transom that has since been filled in. Both the south bay of the 1st floor and both of the bays of the 2nd floor feature pairs of three/one-sash windows. A prominent, hipped-roof dormer emerges out of the center of the asphalt shingle roof with a pair of small three/one-sash windows. A brick chimney is attached to the south elevation and a one-story addition extends the rear of the house.

Individual Resource Status: **Single Dwelling**

Contributing Total: 1

Individual Resource Status: **Garage**

Contributing Total: 1

883 Locust Avenue



TM/P: 51/3

DHR: 104-5144-0127

Primary Resource Information: Single Dwelling, Stories 2.00, Style: Late 19th and Early 20th Century American Movement, 1928

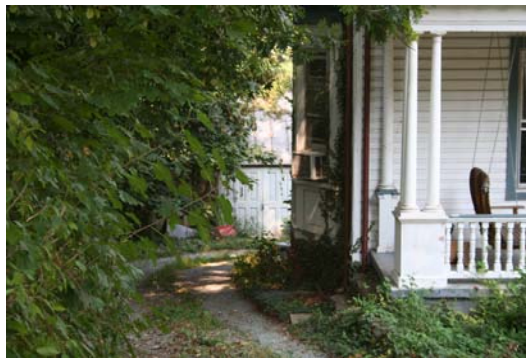
Primary Resource Information: Single Dwelling, Stories 2.00, Style: Other, 1928.

August 2007: A two-story, two-bay common-bond brick dwelling, this side-gabled house has a prominent entrance portico shading the door on the south bay of the east-facing facade. Superintendent Percy G. Harlow and his wife, Louise G. Harlow, constructed it in 1928. The gabled-roof entrance portico is supported by two freestanding and two engaged robust Tuscan columns and has a segmental shape to the pediment. The north bay of the 1st floor has paired six/one-sash windows with a flat arch above, while there are two six/one-sash windows arranged asymmetrically on the 2nd floor of the facade. The asphalt shingle-covered roof overhangs slightly and a chimney emerges roughly from its center. A frame addition with a balcony and balustrade above is attached to the north elevation.

Individual Resource Status: **Single Dwelling**

Contributing Total: 1

887 Locust Avenue



TM/P: 51/2

DHR: 104-5144-0128

Primary Resource Information: Single Dwelling, Stories 2.00, Style: Late 19th and Early 20th Century American Movement, 1907

August 2007: One of the earlier houses north of Hazel Street on Locust Avenue, this two-story, two-bay frame, hipped-roof dwelling has a slightly projecting south bay with a flush cross gable and flush central cross gables on the north and south elevations. Mary V. Jones, a widow, built this house for herself and her grown, single children in 1907. A hipped-roof porch shades the 1st floor of the facade; is approached by one shallow concrete step; is supported by pairs of engaged and freestanding, slender Tuscan columns on wooden plinths and connected by a turned balustrade; and has a simple entablature with block modillions. The door is located in the north bay of the east-facing facade and has sidelights and a single-light transom, while the north bay of the 1st floor has a single two/two-sash window. Both of the bays of the 2nd story have single two/two-sash windows. Each of the gables continue the cornice of the rest of the house; has a boxed cornice with return; is filled in with wooden shingles laid side-by-side; and has a central, circular vignette. A brick chimney rises out of roughly the center of the house. The roofs of both the porch and the house itself are metal and a small, semi-hexagonal bay window is attached to the south elevation.

Individual Resource Status: **Single Dwelling**

Individual Resource Status: **Garage**

Contributing Total: 1

Contributing Total: 1