

Photo of Cox's Row c. 1950s, from Albemarle Charlottesville Historical Society.

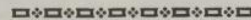


1960s Flyer,
UVA Special
Collections.

You Can Help Get Rid of Our SLUMS
Vote FOR all THREE Housing Sites



Vote FOR all THREE Housing Sites on Tuesday, May 9th,
and rid Charlottesville of its biggest slum area



Read this Booklet for the answers to some of the questions being
asked about Public Housing and Slum Clearance . . .

LEARN THE TRUTH!

Citizens Slum Clearance and
Public Housing Committee

IF WE WANT TO GO FROM THIS

South Street



"UNFIT"

Fifth Street



"UNSANITARY"

Parrott Street



"UNSAFE"

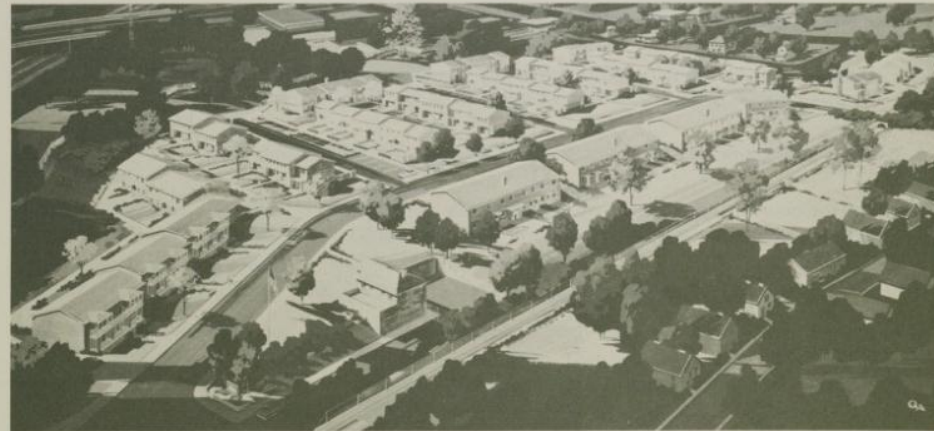
Parrott & Diggs



"AND JUNK YARD RATS AS WELL"

TO THIS

WESTHAVEN

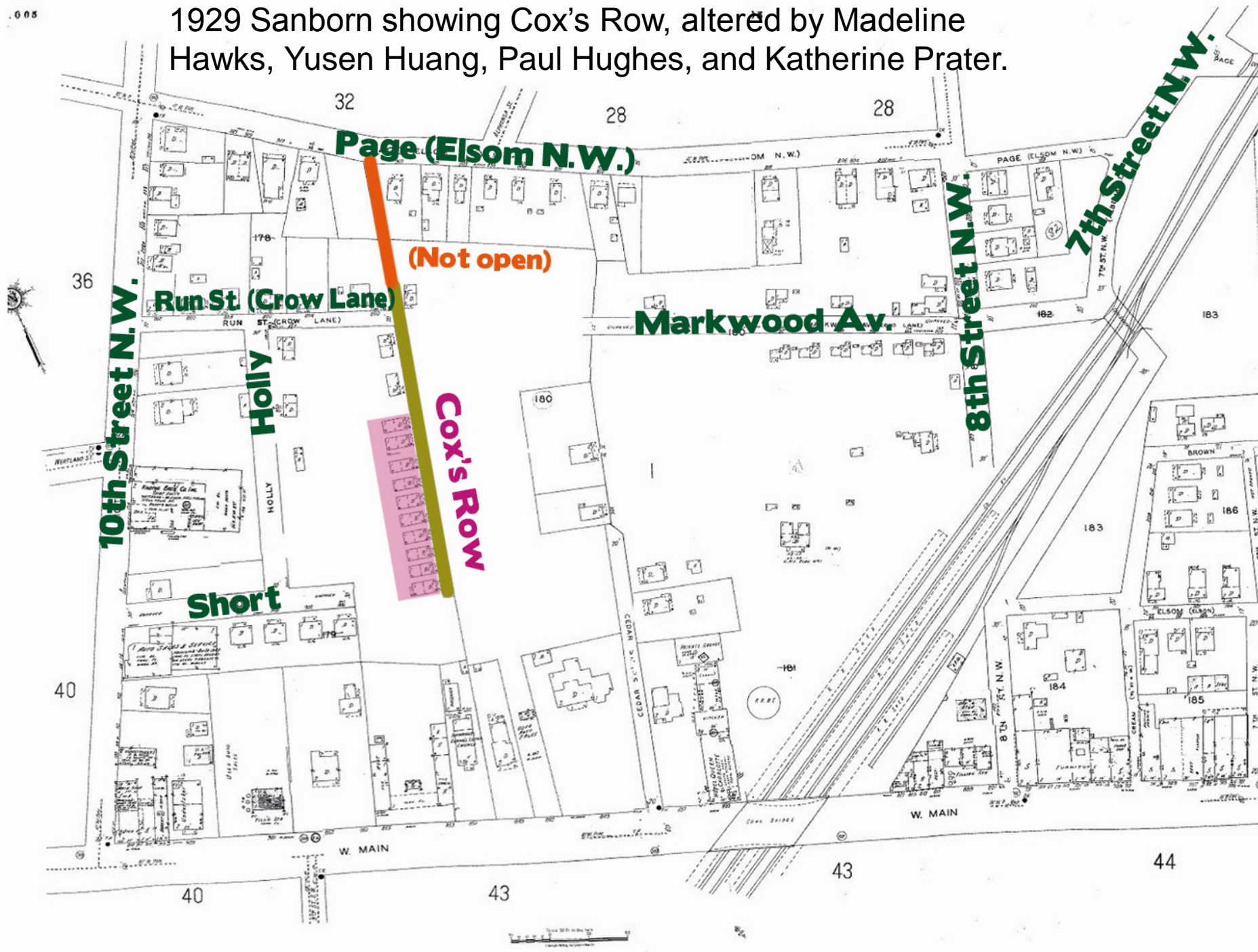


VOTE FOR HOUSING SITES

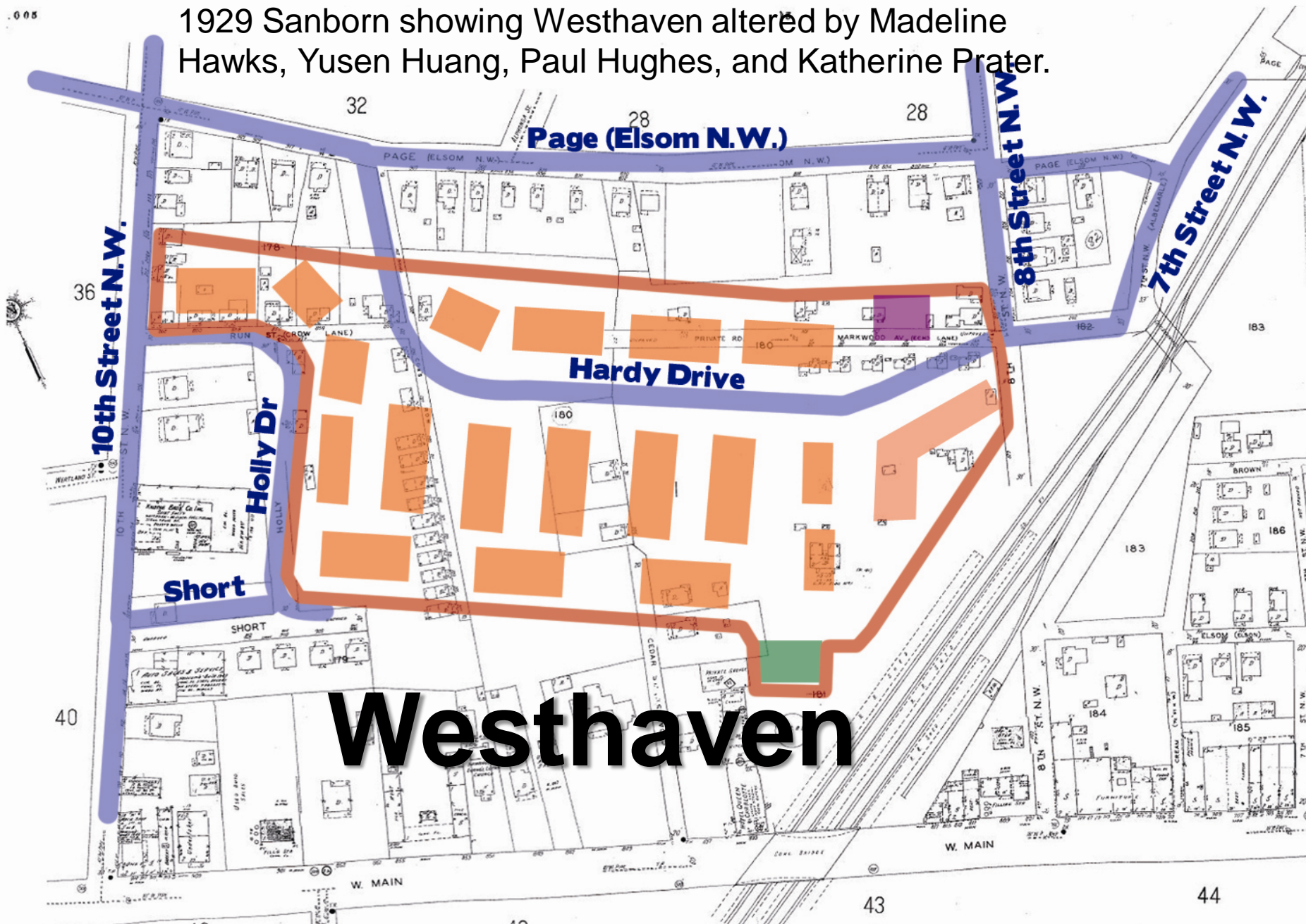
Civic League of Charlottesville and Albemarle

1960s Flyer,
UVA Special
Collections.

1929 Sanborn showing Cox's Row, altered by Madeline Hawks, Yusen Huang, Paul Hughes, and Katherine Prater.



1929 Sanborn showing Westhaven altered by Madeline Hawks, Yusen Huang, Paul Hughes, and Katherine Prater.



Westhaven

126-unit, 19-building, almost-10-acre, \$2 million

Photo of Westhaven c. 1960s, from Albemarle Charlottesville Historical Society.

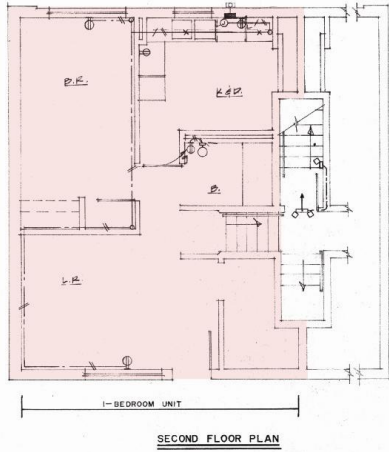


Westhaven in Construction , 1963, From Rip Payne Collections, Albemarle Charlottesville Historical Society.

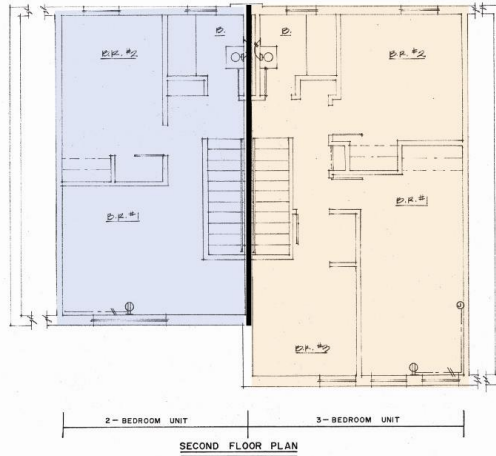


All maps courtesy of Charlottesville Housing Authority altered by Madeline Hawks, Yusen Huang, Paul Hughes, and Katherine Prater.

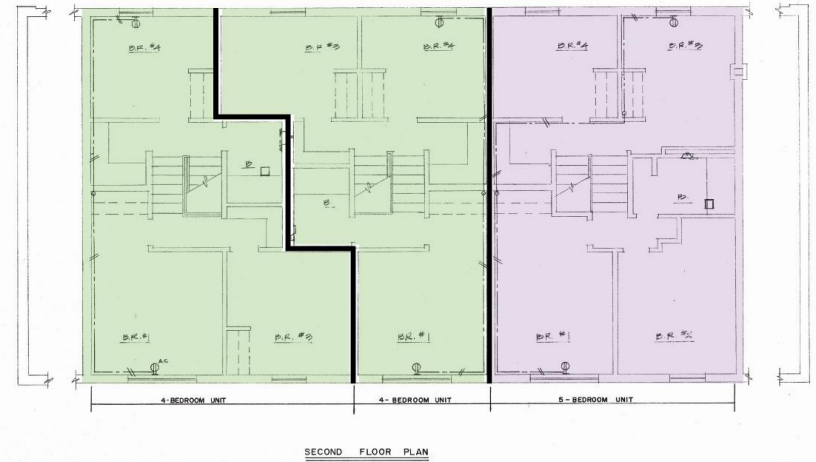
Footprints of 1-5 Bedroom Modular Units



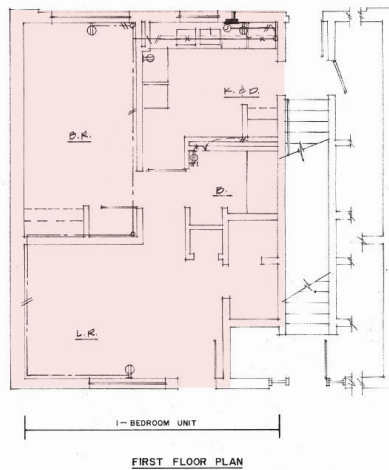
1BR Unit - 2nd fl.



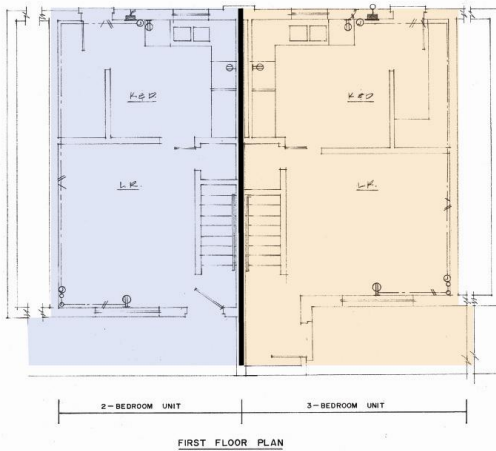
2BR Unit - 2nd fl. 3BR Unit - 2nd fl.



4BR/4BR Units - 2nd fl. 5BR Unit - 2nd fl.



1BR Unit - 1st fl.

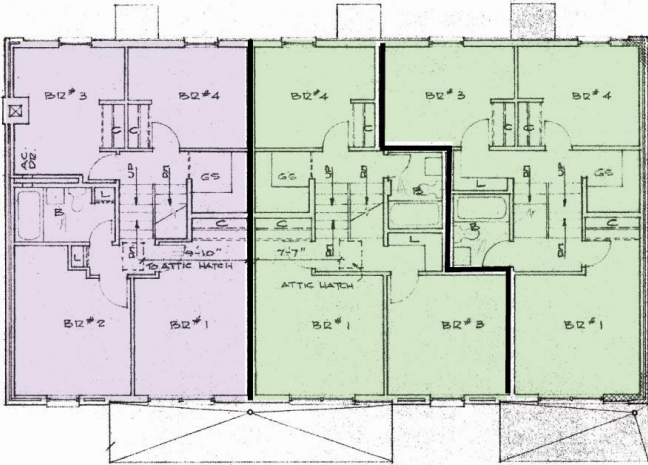


2BR Unit - 1st fl. 3BR Unit - 1st fl.

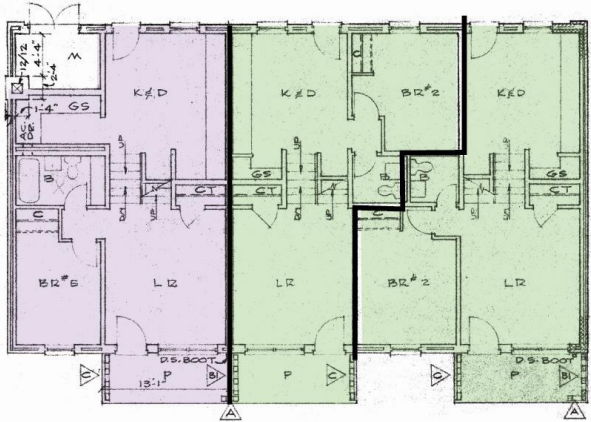


4BR/4BR Units - 1st fl. 5BR Unit - 1st fl.

Type A: Building 19



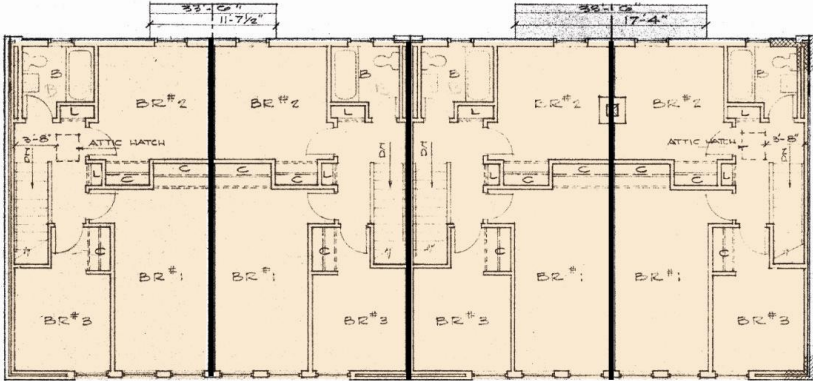
TYPE A - SECOND FLOOR - 19



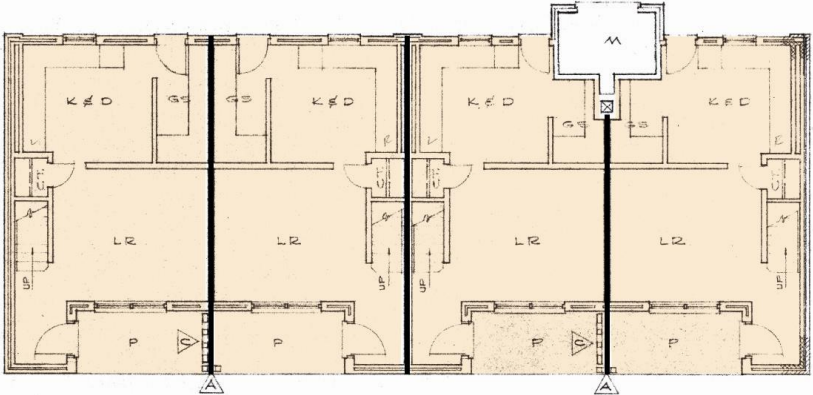
TYPE A - FIRST FLOOR - 19

KEY	
1BR Unit	1BR Unit
2BR Unit	2BR Unit
3BR Unit	3BR Unit
4BR Unit	4BR Unit
5BR Unit	5BR Unit

Type B: Building 13



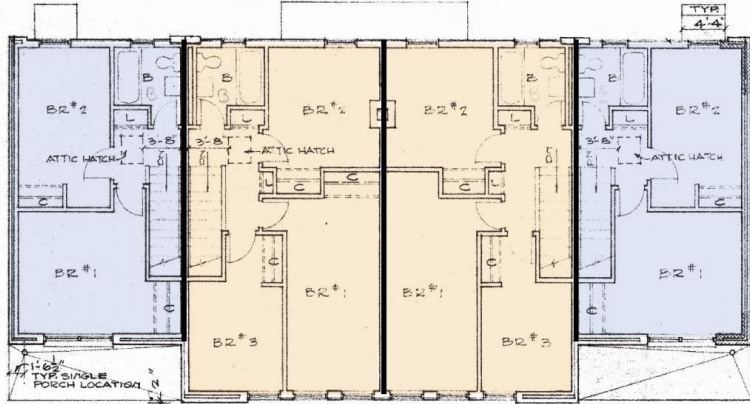
TYPE B - SECOND FLOOR - No 13



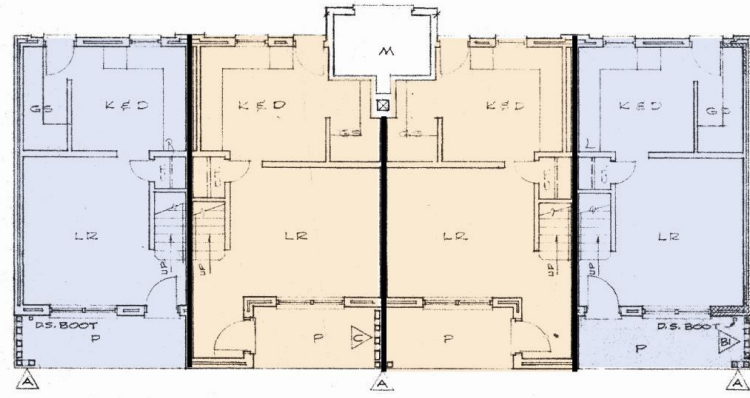
TYPE B - FIRST FLOOR - No 13

KEY	
1BR Unit	
2BR Unit	
3BR Unit	
4BR Unit	
5BR Unit	

Type C: Buildings 2, 3, & 14



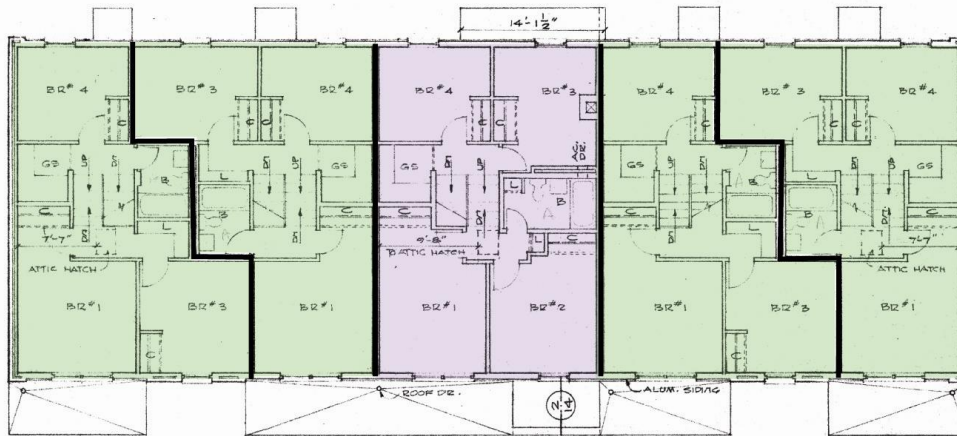
TYPE C - SECOND FLOOR - nos 2, 3, 14



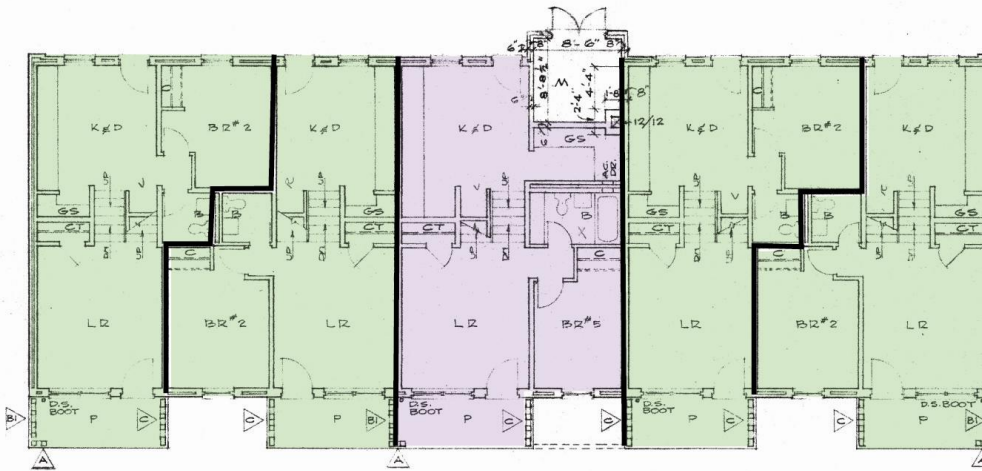
TYPE C - FIRST FLOOR - nos 2, 3, 14

KEY	
1BR Unit	2
2BR Unit	3
3BR Unit	4
4BR Unit	5
5BR Unit	6

Type D: Building 16



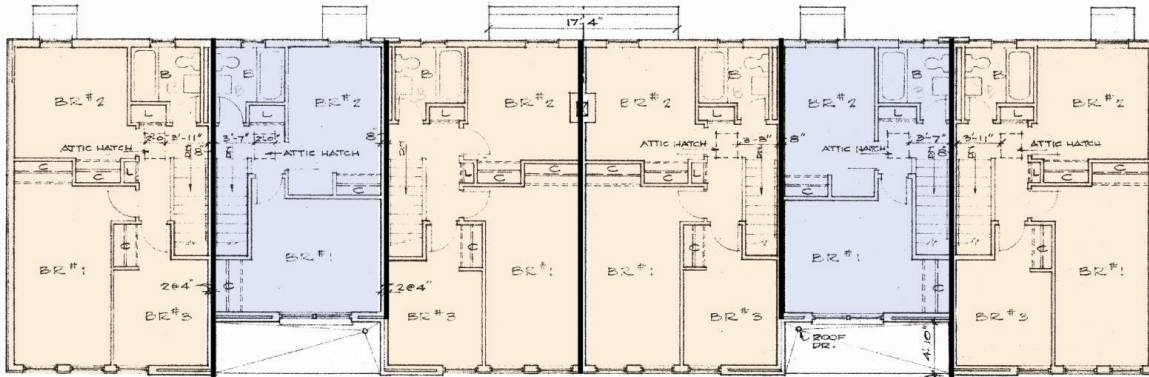
TYPE D - SECOND FLOOR - #16



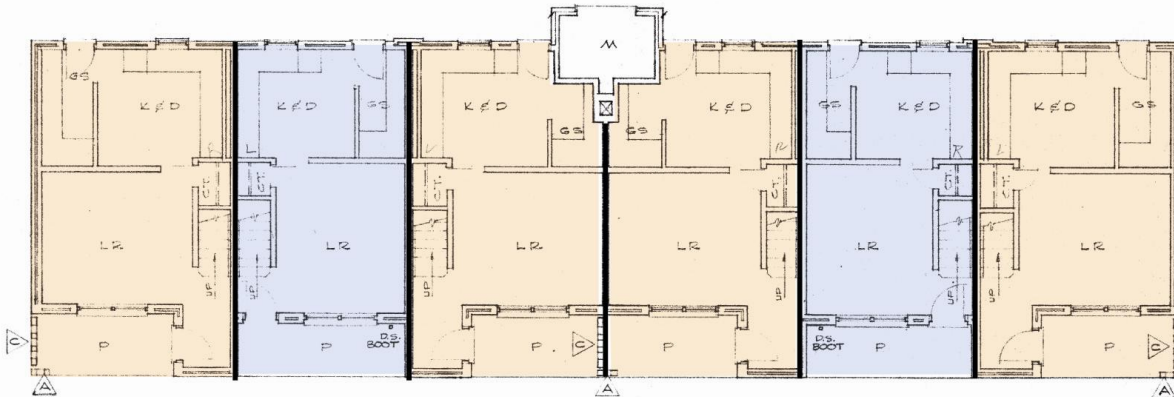
TYPE D - FIRST FLOOR - #16

KEY	
1BR Unit	2BR Unit
3BR Unit	4BR Unit
5BR Unit	

Type E: Buildings 1, 4, 5, 8, & 11



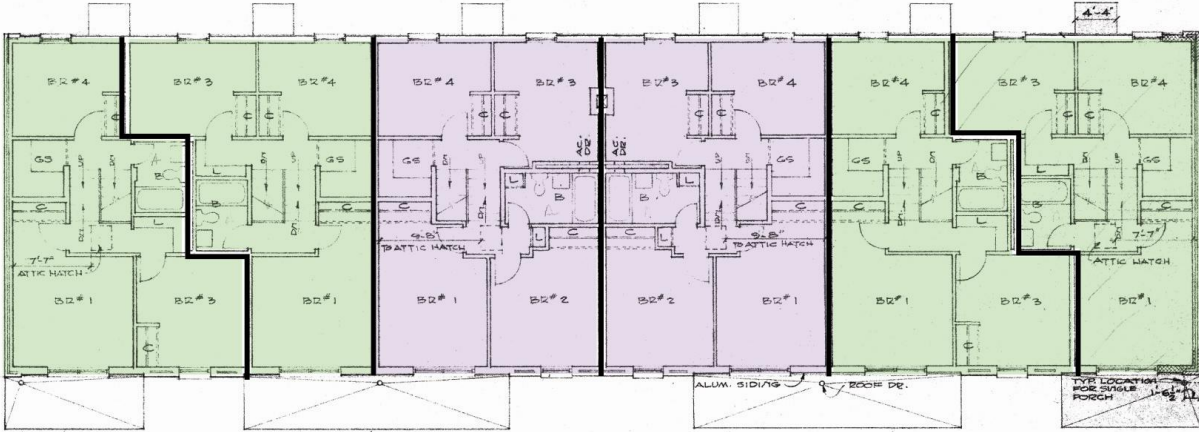
TYPE E - SECOND FLOOR - nos 1, 4, 5, 8 & 11



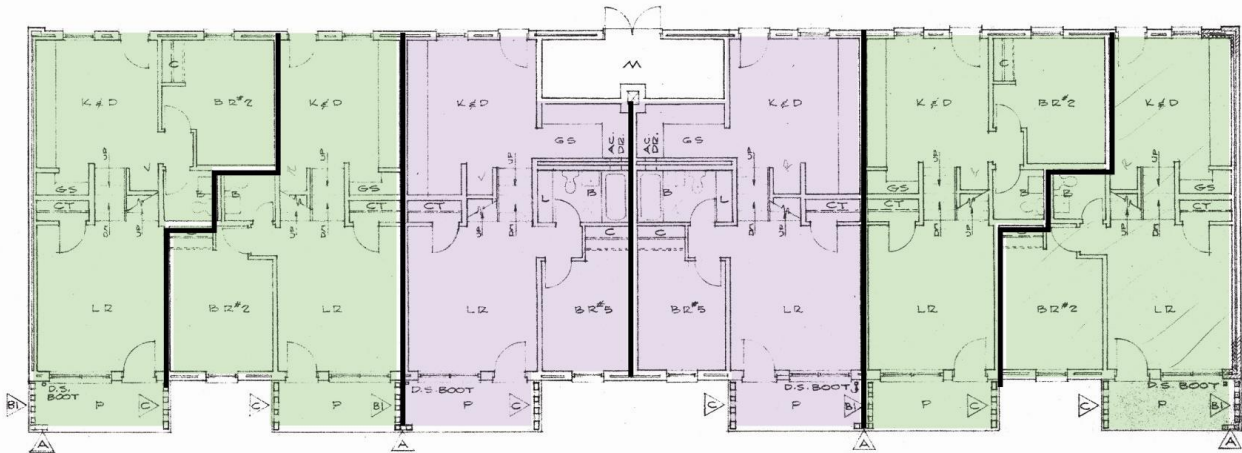
TYPE E - FIRST FLOOR - nos 1, 4, 5, 8 & 11

KEY	
1BR Unit	
2BR Unit	
3BR Unit	
4BR Unit	
5BR Unit	

Type F: Buildings 17 & 18



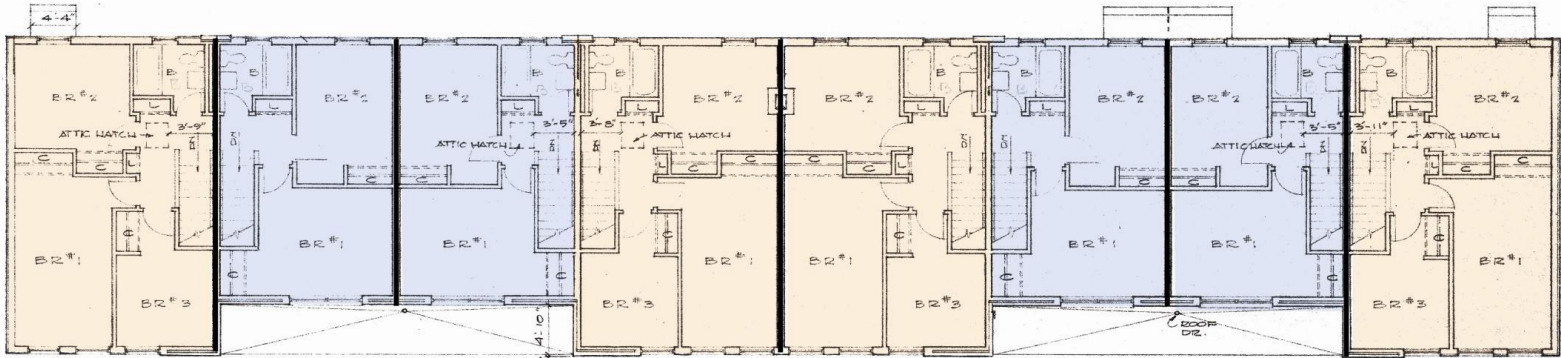
TYPE F - SECOND FLOOR - 12 17 & 18



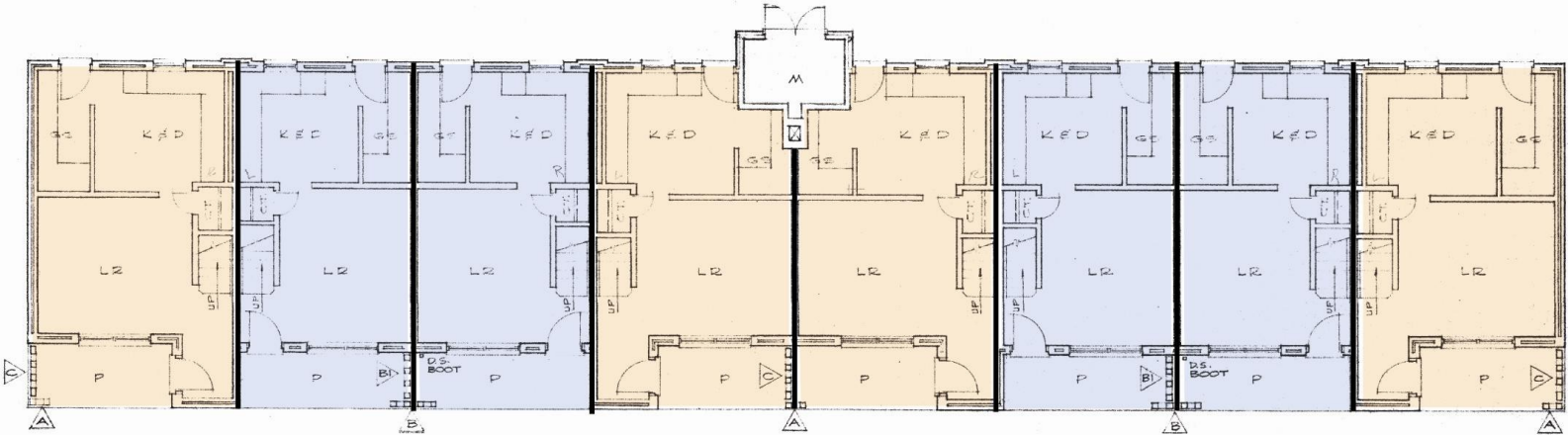
TYPE F - FIRST FLOOR - 12 17 & 18

KEY	
1BR Unit	(Green)
2BR Unit	(Purple)
3BR Unit	(Light Green)
4BR Unit	(Light Green)
5BR Unit	(Light Green)

Type G: Buildings 6, 7, 9, 10, & 12



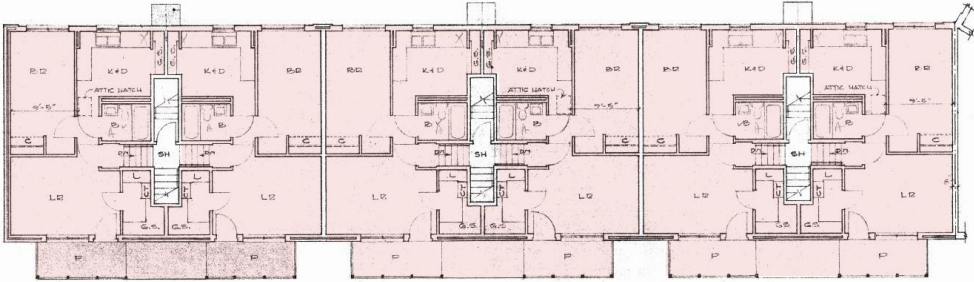
TYPE G - SECOND FLOOR - nos 6,7,9,10, & 12



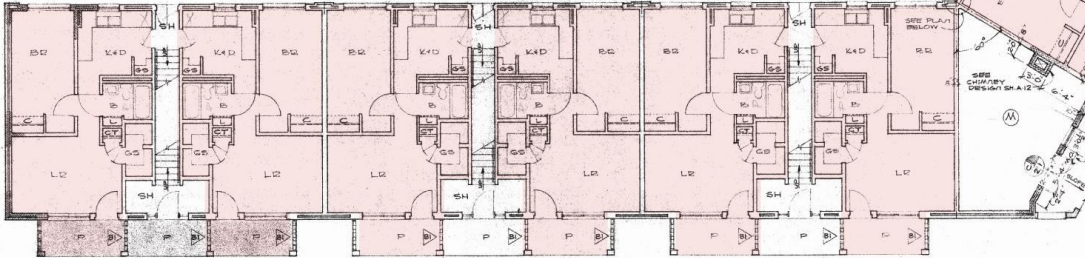
TYPE G - FIRST FLOOR - nos 6,7,9,10, & 12

KEY	
1BR Unit	(Light Blue)
2BR Unit	(Light Orange)
3BR Unit	(Light Green)
4BR Unit	(Light Yellow)
5BR Unit	(Light Purple)

Type H: Building 15



TYPE H - SECOND (PART) FLOOR - #15



FIRST FLOOR - #15



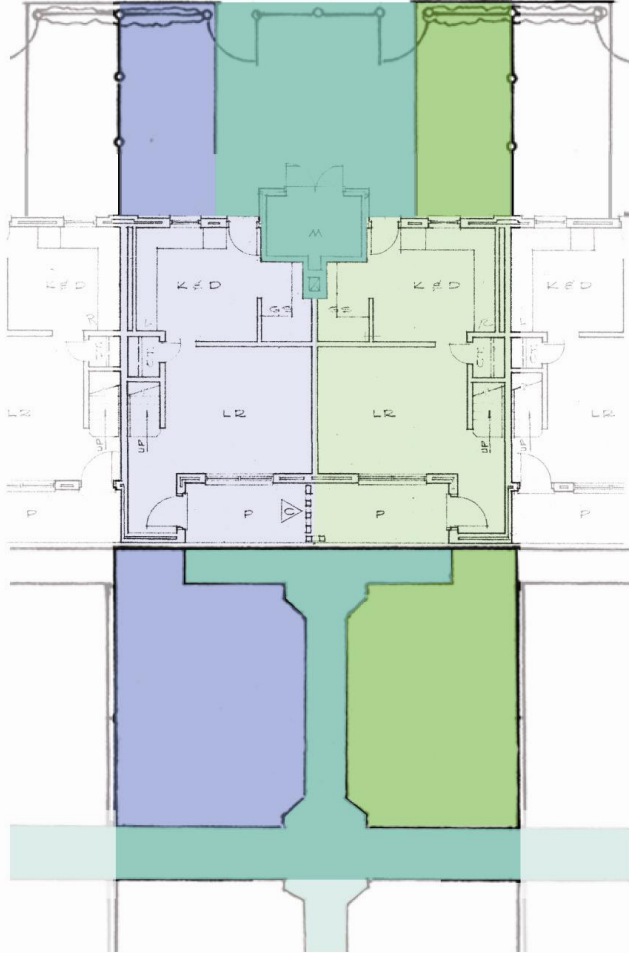
KEY	
1BR Unit	
2BR Unit	
3BR Unit	
4BR Unit	
5BR Unit	

Buildings on Site, Coded by Unit Type



KEY	
	1BR Unit
	2BR Unit
	3BR Unit
	4BR Unit
	5BR Unit

Communal Outdoor Space Shared by Two Units



KEY
Unit 1
Unit 2
Communal

Photos and comparison by Madeline Hawks, Yusen Huang, Paul Hughes, and Katherine Prater.

Communal Space and Enclosure of 1BR vs. Larger Units



Undivided front lawns



Undivided back lawns



Divided front lawns



Divided back lawns

View of one row of 2 and 3 Bedroom Units south of Hardy Drive. Photo by Kristin Rourke



View of two units (four bedroom on the left and five bedroom on the right) on the north side of Hardy Drive) Photo by Kristin Rourke



The back of a row of two and three bedroom units south of Hardy Drive showing fenced in back yards and parking Photo by Kristin Rourke



View of one and two bedroom units and entrance sign on the south side of Hardy Drive Photo by Kristin Rourke



View of a block of 4 and 5 bedroom units on the northside of Hardy Drive with a garden Photo by Kristin Rourke



View of front yards of units south of Hardy Drive. Photo by Kristin Rourke.



View of one row of 2 and 3 Bedroom Units south of Hardy Drive Photo by Kristin Rourke



View of one row of the Community Center building on the north side of Hardy Drive
Photo by Katherine Prater



One Bedroom Apartments on the South East side of Hardy Drive. Photo by Katherine Prater



One Bedroom Apartments on the South East side of Hardy Drive. Photo by Yusen Huang



Living Room in a two bedroom unit. Photo by Katherine Prater



Kitchen in a two-bedroom unit. Photo by Katherine Prater



Staircase to the second floor in a two-bedroom unit. Photo by Katherine Prater



Upstairs hall in a two-bedroom unit. Photo by Katherine Prater



Master bedroom in two-bedroom unit. Photo by Katherine Prater



Second Bedroom in two-bedroom unit. Photo by Katherine Prater



Bathroom in two-bedroom unit. Photo by Katherine Prater

