

Central Little League: Aidan's Lights Fund

Purpose: Installation of sports lighting at the Pen Park Upper Field (Dedicated as *Geer Family Field*), 1400 Pen Park Road, Charlottesville, VA 22901.

League Background: Central Little League (CLL) was formed in 1951, being the oldest of three current Little Leagues in the City/County. Until recent years, CLL provided Little League baseball to youth in the central/north region of the City of Charlottesville and the County of Albemarle. More recently, CLL now offers the only Little League sanctioned girls Softball League in the City and most of the County. We have a diverse family profile including all races and every socioeconomic status. Roughly 20% of our families receive free or reduced registration fees. In some of the elementary schools within our boundary, nearly all the children receive free or reduced meal costs. Enrollment numbers for the past three years, including both spring (March to July season) and fall (August to October season) enrollment has been ~ 550-600 children per year, aged 4-12 (average 7.8 years), 57% boys/43% girls (2025):

	Baseball (spring)	Softball (spring)	Baseball (fall)	Softball (fall)	Total Enrollment
2023	213	116	148	99	576
2024	191	130	130	108	559
2025	206	141	-	-	-

We form ~ 55 teams each year with local sponsors from across the spectrum of regional small through large businesses. We have well over 200 volunteer parents each year with a Board of Directors comprised of ~ 25 adults to oversee safety and quality of operations.

Fields for practice includes a number of City and County public elementary and middle schools, along with The Charlottesville Catholic School, Azalea Park, Washington Park and the lower and upper fields at Pen Park. The latter is our primary game field at which we conduct games/practices every night of the week from early March through June and in the fall from August through September.

Financially, we operate on a balanced or slightly positive budget, with operating costs of ~ \$45,000/year. The sources of revenue include registration fees, sponsorship fees, an annual fundraising activity (2024 included a raffle) and the operation of a concession stand at Pen Park.

Mission Statement (from Little League International, our governing organization):

Little League® believes in the power of youth baseball and softball to teach life lessons that build stronger individuals and communities.

Little League®'s purpose is to positively impact youth and communities.

Little League®'s values include community, fun, inclusion, integrity, and teamwork.

Project Rationale: We have identified a number of key drivers for the installation of lights at Pen Park

1. Aidan Peters was a participant in CLL for many years, from tee ball through our major league program. Tragically, he developed Ewing Sarcoma during high school, losing his battle with the disease after high school graduation. It was his dream that someday there would be lights at

the CLL field, so that all children could experience the joy of nighttime baseball, as he did. *Please see the attached biography of Aidan Peters.*

2. Safety- Both practices and games are held at the Pen Park upper field during shorter-daylight months from March through April and again September through October. The amount of daylight limits the start and finish times. We have strict guidelines about sporting activities, ambient light and safety. The addition of lighting would greatly enhance our ability to provide an environment with optimal safety while having an expanded menu of operations.
3. Enhance the impact of youth athletics- There are many studies that support the connection between athletic activities and improvement in social outcomes. For children age 6-12, medical health (including obesity incidence) correlates with sports participation ([Project Play - An Initiative of the Aspen Institute](#)). Equally important, prospective studies of children in kindergarten through fourth grade found a positive correlation between physical activity and "improved academic achievement, including grades and standardized test scores" (Piche, 2014). In sum, anything that we as a youth sports organization can do to improve participation for the children in our community should have long term health and scholastic benefits.
4. League growth- Baseball competes with other spring and fall sports, many of which already have facilities with lights or indoor accommodations (e.g. soccer, football, other baseball Little Leagues and the Babe Ruth League for youth 13+). We believe that our ability to attract families to participate in baseball will be enhanced with the opportunity to play "under the lights".

Project summary of work to date, timeline and impact:

1. CLL formed a committee to explore the feasibility of installing lights at Pen Park, in compliance with all Little League International rules and regulations. We have partnered with Musco Lighting, the pre-eminent company in athletic field lighting, at the direction of the City of Charlottesville Parks and Recreation Department. Musco Lighting developed an installation plan with a lighting survey (see attached). We presented these to an open community forum in the fall of 2024. That meeting, held at the City Courthouse, brought 30-50 community members together and had unanimous support for moving forward.
2. We have completed all needed engineering plans (Inversity Engineering) and has received approval from the City Parks and Recreation.
3. In 2024, we started the Aidan's Lights Fund, dedicated to raise capital to support this project.

Fundraising goal and current status as of April, 2025:

- | | |
|--------------------------------|------------------|
| 1. Project cost: | \$170,000 |
| 2. <u>Aidan's Lights Fund:</u> | <u>\$ 29,000</u> |
| 3. Fundraising goal: | \$141,000 |

Central Little League Approach Moving Forward:

1. Exploring numerous national and regional funding opportunities (grants)
2. Raising awareness of the project in the community to develop grass-roots support
3. Trying to identify donors who recognize the benefit and impact of expanding youth athletic facilities in the Charlottesville and Albemarle County area
4. Pursuing league-wide fundraising activities that can increase the funds available to be dedicated to the Aidan's Lights project.

Central Little League Venmo*:

@Central_LL



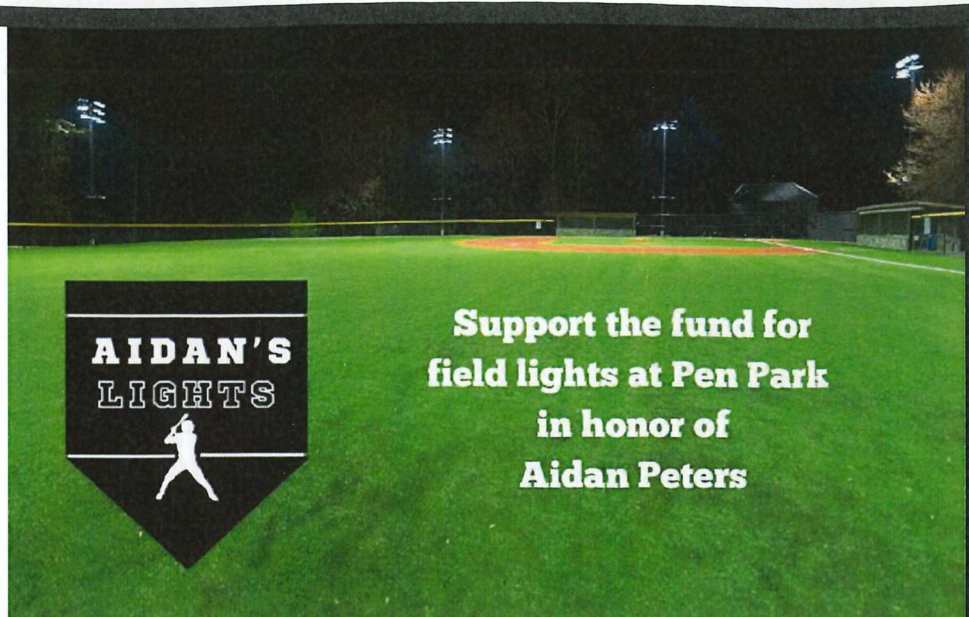
Check*:

Make checks payable to:

Bill Hamrick
Central Little Treasurer
2950 Magnolia Bend
Charlottesville, VA 22911

Cash/Other:

Contact Treasurer Bill Hamrick
at treasurer@centralll.com



**Please earmark donations for the Aidan Peters Field Lighting Fund by putting "Aidan's Lights" in the memo line*

About Aidan Peters:

Aidan's love of baseball started early. His father, a Chicago native, is a life-long Cubs fan, as well as a former baseball player himself, so Aidan gravitated to baseball naturally. He played for Central Little League from when he was 5 years old until he aged out. If it were allowed, he probably would have stayed longer! In fact, he returned to Central LL as an umpire because he loved being on that field so much and he enjoyed helping kids learn the game just as he had.



From the beginning Aidan showed an aptitude for pitching and for playing catcher, and he played both positions throughout his time at Central. He became a dominant pitcher who would post the best earned run average for Charlottesville High School's varsity baseball team in the spring of 2021 as a sophomore. But it wasn't always all strikeouts and high fives for him. When he was eight years old if something didn't go his way or the umpire made a bad call (in his estimation) he could lose his focus, and his pitching control along with it. He had to learn to control his emotions in these situations and to stay focused on the task at hand. This was an extremely valuable lesson not only for baseball but for life in general. He also learned teamwork, friendship, and leadership at Central. There's a reason folks talk about the "baseball family." Aidan made lifelong friends at Central Little League.

In the spring of 2021, while conditioning for the baseball season of his junior year at Charlottesville High School, Aidan developed a pain in his hip that his doctor thought was a strain from his new exercise routine. But after months of physical therapy, medications, and scans, we learned at the start of his junior year that Aidan had metastatic Ewing Sarcoma. After many rounds of chemotherapy and radiation, and missing his junior year baseball season, he was declared to be in remission in the summer of 2022 and we all hoped Aidan would be cancer free for good. But just two months later it returned. When he heard the news, the first thing Aidan said was, "but I wanted to play baseball this year." So he juggled trips to Duke University Medical Center for a clinical trial with his game schedule and was able to play his Senior year season of baseball for CHS in the spring of 2023.

Aidan lost his battle with cancer on August 1, 2023, less than 8 weeks after graduating from CHS. Aidan never forgot his baseball roots at Central Little League. He loved to go out to the field in the off season and throw and hit with his dad. The field at Pen Park was a second home to Aidan. He knew from experience that Central Little League had a desperate need for lights and the added practice and game time they would facilitate, so he made it his final wish that funds be raised in his memory to acquire them so even more kids would learn to love the game of baseball as much as Aidan did.

- Becca and Adam Peters (Aidan's Parents)

Pen Park [Central] Little League Charlottesville, VA

Lighting System

Pole/Fixture Summary					
Pole ID	Pole Height	Mtg Height	Fixture Qty	Luminaire Type	Load
AL-A2	60'	60'	2	TLC-BT-575	1.76 kW
			1	TLC-BT-575	0.57 kW
			1	TLC-BT-575	0.57 kW
B1-B2	70'	70'	4	TLC-BT-575	4.68 kW
			1	TLC-BT-575	0.57 kW
4			20	TLC-BT-575	18.60 kW

Circuit Summary			
Circuit	Description	Load	Fixture Qty
A	Little league	18.60 kW	20

Fixture Type Summary					
Type	Source	Wattage	Lumens	L70	Quantity
TLC-BT-575	LED 5700K - 75 CRI	575W	52,000	>120,000	>120,000
TLC-BT-575	LED 5700K - 75 CRI	1170W	150,000	>120,000	>120,000
TLC-BT-575	LED 5700K - 75 CRI	540W	67,000	>120,000	>120,000
TLC-BT-575	LED 5700K - 75 CRI	880W	104,000	>120,000	>120,000

Single Luminaire Amperage Draw Chart

Driver Specifications (L90 min power factor)		Line Amperage Per Luminaire (L90 min power factor)			
Single Phase Voltage	(60)	240	277	347	480
TLC-BT-575	3.3	2.9	2.5	2.0	1.5
TLC-BT-575	6.9	6.0	5.2	4.2	3.0
TLC-BT-575	3.2	2.8	2.4	1.9	1.4
TLC-BT-575	3.2	4.5	3.9	3.1	2.3

Light Level Summary

Calculation Grid Summary									
Grid Name	Calculation Metric	Ave	Min	Max	Ave/Min	Max/Min	Circuits	Fixture Qty	
Blanket Grid	Horizontal	8.80	0	61	0.00	A	A	20	
LF Bulbpen	Horizontal	25.9	23	28	1.26	A	A	20	
Little League (Infield)	Horizontal Illuminance	51.6	41	61	1.50	A	A	20	
Little League (Outfield)	Horizontal Illuminance	31.4	20	37	1.80	A	A	20	
LF Bulbpen	Horizontal	21.4	18	25	1.42	A	A	20	



From Hometown to Professional



Not to be reproduced in whole or part without the written consent of Musco Sports Lighting, LLC. ©1981, 2023 Musco Sports Lighting, LLC.

PROJECT SUMMARY

Equipment List For Areas Shown

QTY	LOCATION	SIZE	Pole ELEVATION	LUMINAIRE TYPE	QTY/POLE	THIS FIELD	OTHER FIELDS
2	A1-A2	60'	59.7'	TLC-LED-1200	1	1	0
2	B1-B2	70'	59.7'	TLC-LED-900	2	2	0
2			55.5'	TLC-BT-575	1	1	0
4			70.1'	TLC-LED-1200	4	4	0
1			70.1'	TLC-LED-550	1	1	0
1			55.5'	TLC-BT-575	1	1	0
4			Totals		20	20	0

*Above Grade level relative to the field

Pen Park [Central] Little League
Charlottesville, VA

Grid Summary

Name	Little League
Size	200'x200' - basepath 60'
Spacing	20.0' x 20.0'
Height	3.0' above grade

Illumination Summary

MAINTAINED HORIZONTAL FOOTCANCES	
Guaranteed Average	50
Scan Average	51.61
Maximum	61
Minimum	37
Avg/Min	1.27
Guaranteed Max/Min	2 2.5
Max/Min	1.50 1.80
UG (adjacent pts)	1.27 1.40
CU	0.65
No. of Points	25
Applied Circuits	1
No. of Luminaire	20
Total Load	18.60 kW

Guaranteed Performance: The ILLUMINATION described above is guaranteed per your Musco Warranty document and includes a 0.95 dirt depreciation factor.

Field Measurements: Individual field measurements may vary from those reported in this document. Measurements should be taken in accordance with the following instructions and should be taken in accordance with IESNA RP-6-15.

Electrical System Requirements: Refer to Amperage Draw Chart and/or the "Musco Control System Summary" for electrical sizing.

Installation Requirements: Results assume ± 3% tolerance in luminaire output and luminaire structures located within 3 feet (1m) of design locations.



SCALE IN FEET 1:40

0 40' 80'

ENGINEERED DESIGN By: Brayton Carter • File #1486988 • 15-Feb-24

Pole location(s) Ⓢ dimensions are relative to 0.0 reference point(s) Ⓢ



We Make It Happen.

Not to be reproduced in whole or part without the written consent of Musco Sports Lighting, LLC. ©2024 Musco Sports Lighting, LLC

ILLUMINATION SUMMARY

Pen Park [Central] Little League Charlottesville, VA

Grid Summary

Name: RP Bullpen
Size: 200'x200'x200' - basepath 60'
Spacing: 10.0' x 10.0'
Height: 3.0' above grade

ILLUMINATION SUMMARY

MAINTAINED HORIZONTAL FOOT CANDLE	
Entire Grid	
Scan Average	21.38
Maximum	25
Minimum	18
Avg/Min	1.20
Max/Min	1.44
UG (adjacent foot)	0.00
UG (adjacent foot)	0.00
No. of Points	5
LUMINAIRE INFORMATION	
Applied Circuits	A
No. of Luminaires	20
Total Load	18.60 kW

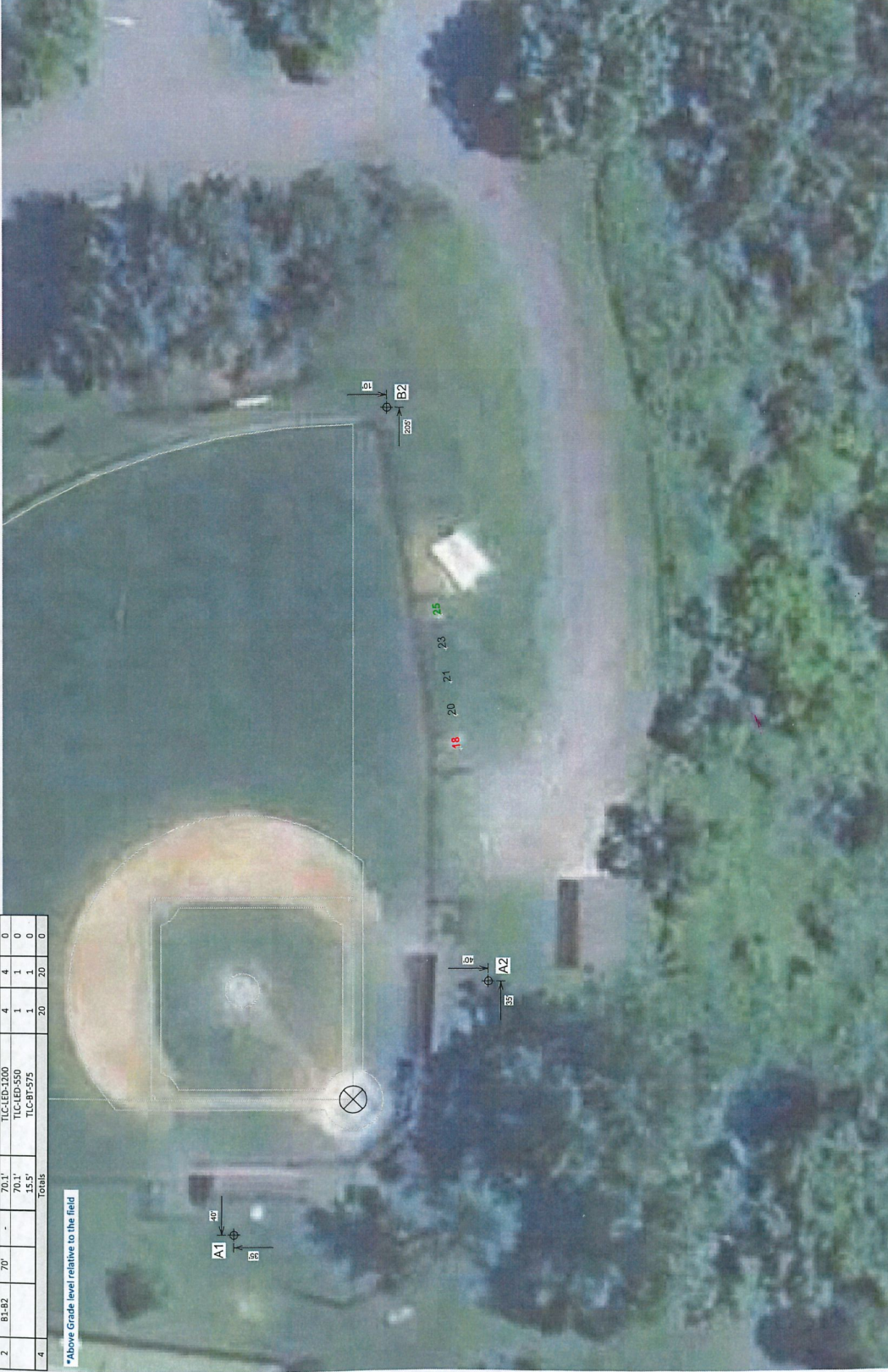
Guaranteed Performance: The ILLUMINATION described above is guaranteed to meet or exceed the minimum foot candle requirements for the application and location. Individual field measurements may vary from computer-calculated predictions and should be taken in accordance with IESNA RP-6-15.

Electrical System Requirements: Refer to Amperage for wiring and/or the "Musco Control System Summary" for electrical wiring.

Installation Requirements: Results assume $\pm 3\%$ nominal voltage at line side of the driver and structures located within 3 feet (1m) of design locations.

Equipment List For Areas Shown					
QTY	LOCATION	SIZE	HEIGHT ELEVATION	LUMINAIRE TYPE	QTY/POLE
2	A1-A2	60'	59.7'	TLC-LED-1200	1
2	B1-B2	70'	59.7'	TLC-LED-900	2
2	B1-B2	70'	59.7'	TLC-LED-575	1
2	B1-B2	70'	70.1'	TLC-LED-1200	4
2	B1-B2	70'	70.1'	TLC-LED-550	1
2	B1-B2	70'	70.1'	TLC-LED-575	1
4	Totals		15.5'		20

*Above Grade level relative to the field



SCALE IN FEET 1:30



ENGINEERED DESIGN By: Brayton Carter • File #1486988 • 15-Feb-24

Pole location(s) ⊕ dimensions are relative to 0.0 reference point(s) ☒



Not to be reproduced in whole or part without the written consent of Musco Sports Lighting, LLC. ©1981, 2023 Musco Sports Lighting, LLC.

ILLUMINATION SUMMARY

Equipment List For Areas Shown

QTY	LOCATION	SIZE	GRADE	ABOVE GRADE	LUMINAIRE TYPE	QTY/POLE	THIS GRID	OTHER GRID
2	A1-A2	60'	-	59.7'	TLC-LED-1200	1	1	0
				59.7'	TLC-LED-900	2	2	0
				15.5'	TLC-RT-575	1	1	0
2	B1-B2	70'	-	70.1'	TLC-LED-1200	4	4	0
				70.1'	TLC-LED-550	1	1	0
				15.5'	TLC-RT-575	1	1	0
4				Totals		20	20	0

*Above Grade level relative to the field

Pen Park [Central] Little League
Charlottesville, VA

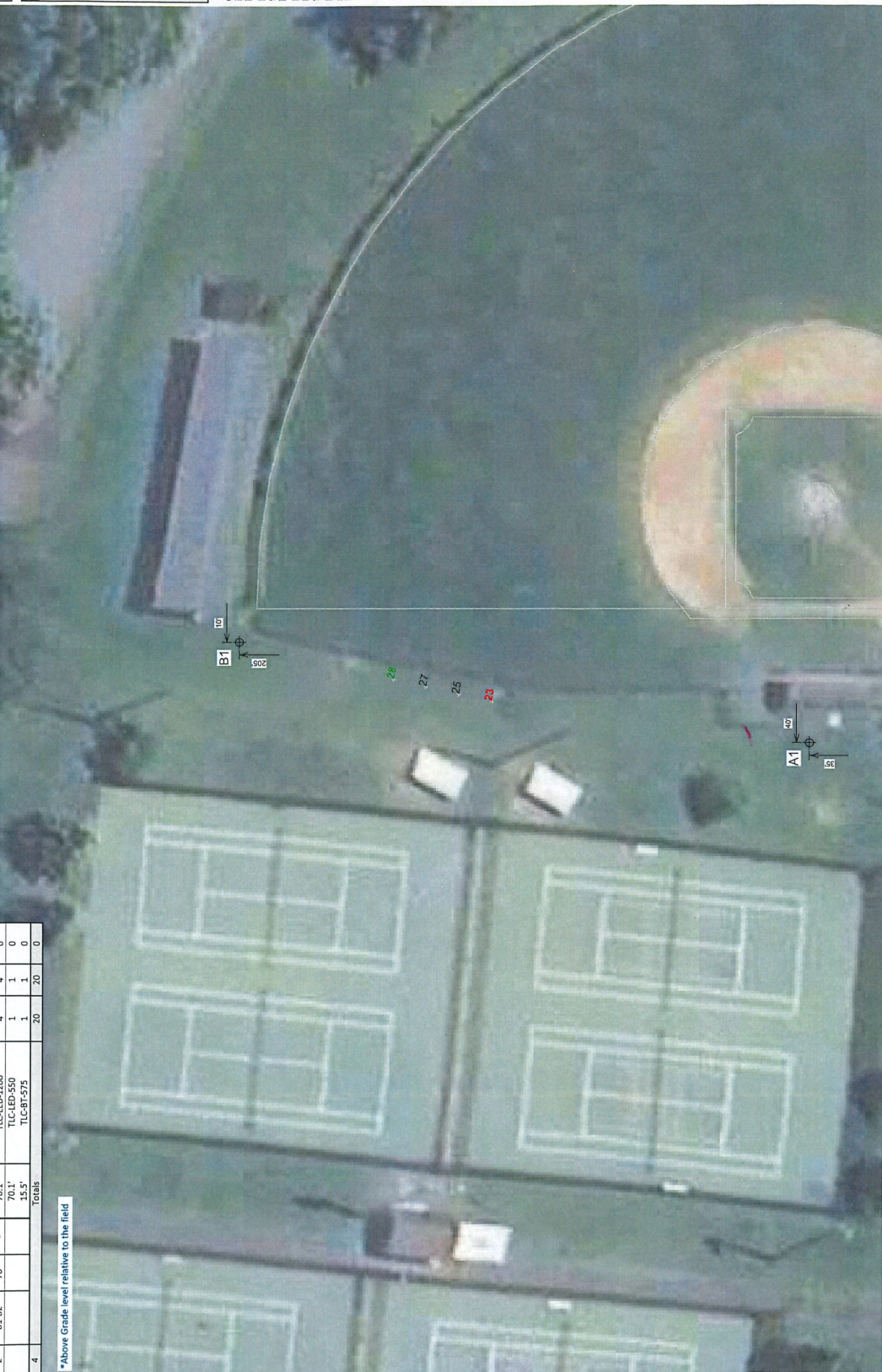
Grid Summary

Name	LF Bulpen
Size	200'x200' - basepath 60'
Spacing	10.0' x 10.0'
Height	3.0' Above Grade

ILLUMINATION SUMMARY

MAINTAINED MINIMUM FOOT-CANDELS	
Entire Grid	
Scan Average	23.86
Maximum	28
Minimum	23
Avg/Min	1.14
Max/Min	1.26
UG (adjacent pts)	1.11
CU	0.00
No. of Points	4
NUMAIRE	1000000
Applied Circuits	A
No. of Luminaires	20
Total Load	18.60 KW

Guaranteed Performance: The ILLUMINATION described above is guaranteed per your Musco Warranty document and includes a 0.95 dirt depreciation factor.
Field Measurements: Field measurements may vary from the predicted values and should be taken in accordance with IESNA RP-6-15.
Electrical System Requirements: Refer to Amperage Draw Chart and/or the "Musco Control System Summary" for electrical sizing.
Notes: Results assume a 3% nominal voltage at line side of the driver and structures located within 3 feet (1m) of design locations.



SCALE IN FEET 1:30
0' 30' 60'
ENGINEERED DESIGN By: Brayton Carter • File #148698B • 15-Feb-24

Pole location(s) ⊕ dimensions are relative to 0.0 reference point(s) ☒



Not to be reproduced in whole or part without the written consent of Musco Sports Lighting, LLC ©1981-2023 Musco Sports Lighting, LLC

ILLUMINATION SUMMARY

Pen Park [Central] Little League
Charlottesville, VA

Grid Summary

Name Blanket Grid
Spacing 20.0' x 20.0'
Height 3.0' above grade

Illumination Summary

MAINTAINED HORIZONTAL FOOT CANDLE	
Entire Grid	
Scan Average	8.80
Maximum	61
Minimum	0
Avg/Min	-
Max/Min	-
UG (adjacent psi)	31.20
CU	0.91
No. of Points	2803
LUMINAIRE INFORMATION	
Applied Circuits	A
No. of luminaires	20
Total load	18.60 kW

Guaranteed Performance: The ILLUMINATION described above will comply with the following minimum performance standards and guidelines: 1.055 ft-candle depreciation factor; 1.055 ft-candle field measurements; individual field measurements may vary from predicted predictions and should be taken in accordance with IESNA RP-6-15.

Electrical System Requirements: Refer to Amperage Draw Chart and/or the "Musco Control System Summary" for electrical sizing.

Installation Requirements: Results assume $\pm 3\%$ nominal voltage at line side of the driver and structures located within 3 feet (1m) of design locations.

New Option Blanket Grid

Zeros = No Light

No Spill (wasted light)



SCALE IN FEET 1:60

0 60° 120°
ENGINEERED DESIGN By: Brayton Carter • File #148698B • 15-Feb-24

Pole location(s) \oplus dimensions are relative to 0.0 reference point(s) \otimes

Not to be reproduced in whole or part without the written consent of Musco Sports Publishing LLC ©1991-2022 Musco Sports Publishing LLC

ILLUMINATION SUMMARY

Pen Park [Central] Little League
 Charlottesville, VA

Equipment Layout

INCLUDES:

- Little League
 Electrical System Requirements: Refer to Amperage
 and Voltage for the "Musco Control System Summary"
 for electrical sizing.
 Installation Requirements: Results assume $\pm 3\%$
 nominal voltage at line side of the driver and structures
 located within 3 feet (1m) of design locations.

Equipment List For Areas Shown

QTY	LOCATION	SIZE	GRADE ELEVATION	GRADE LEVEL	WAVE	LUMINAIRE TYPE	QTY/POLE
2	A1-A2	60'	-	-	59.7'	TLC-LED-900	1
2	B1-B2	70'	-	-	15.5'	TLC-LED-575	1
2	B1-B2	70'	-	-	70.1'	TLC-LED-550	1
2	B1-B2	70'	-	-	15.5'	TLC-LED-575	1
4						TOTALS	20

Single Luminaire Amperage Draw Chart

Driver Specifications (90 min power factor)	Line Amperage Per Luminaire (max draw)									
Single Phase Voltage	208	220	240	277	347	380	480			
TLC-BT-575	(60)	(60)	(60)	(60)	(60)	(60)	(60)			
TLC-LED-1200	6.9	6.5	6.0	5.2	4.2	3.8	3.0			
TLC-LED-550	2.2	3.0	2.8	2.4	1.9	1.4	1.3			
TLC-LED-900	3.2	4.3	4.0	3.5	3.1	2.9	2.3			

Option 2 - All New

>4 pole design

>25 year warranty

>Control Link included

>50/30 FC

>Starting at \$170K



SCALE IN FEET 1 : 60
 0' 60' 120'

ENGINEERED DESIGN By: Brayton Carter • File #1486988 • 15-Feb-24

Pole location(s) dimensions are relative to 0,0 reference point(s)



We Make It Happen.

Not to be reproduced in whole or part without the written consent of Musco Sports Lighting, LLC. ©1981, 2023 Musco Sports Lighting, LLC.

EQUIPMENT LAYOUT