

Architectural And Historic Survey

Identification

STREET ADDRESS: Fourth Street, NW

MAP & PARCEL: 32-89

CENSUS TRACT AND BLOCK:

PRESENT ZONING: B-1

ORIGINAL OWNER: Charlottesville School Board

ORIGINAL USE: High School

PRESENT USE:

PRESENT OWNER: Charlottesville School Board

ADDRESS:

HISTORIC NAME: Jefferson High School

DATE / PERIOD: 1926-27, 1939, 1959

STYLE: Vernacular

HEIGHT (to cornice) OR STORIES: 1, 2 storeys

DIMENSIONS AND LAND AREA: 525' x 325' (4 acres)

CONDITION: Good

SURVEYOR: Bibb

DATE OF SURVEY: Summer 1982

SOURCES: City Records "Looking at Jefferson"
Booker T. Reaves Sanborn Map Co. - 1896, 1920, 1929
Moore, Albemarle: Jefferson's County

ARCHITECTURAL DESCRIPTION

The original section of Jefferson School faces on Commerce Street and is one storey on an English basement. A central clerestorey lights the auditorium which is surrounded by classrooms on three sides. This plan was used in several county schools of the same period, but this is the only example in the city. Foundation and first storey wall construction is of brick laid in stretcher bond. A projecting band of headers above vertical stretchers forms the water table. There is a similar string course of tan brick above the first storey. A concrete-capped parapet with wide battlements conceals a flat roof. These battlements widen into panels decorated with three concrete diamonds over the center and end bays of the 5-bay facade. The center bay is recessed and has a round-arched entrance loggia with concrete keystone and end blocks. A projecting band of stretchers with concrete corner blocks outlines a large rectangular brick panel in each of the windowless end bays. In the second and fourth bays of the facade and in the three bays on the east and west sides, there is a band of five double-sash, 9-over-9 light windows with a single concrete sill. The basement is above ground on the east side and has two pairs of 9-over-9 light windows in each bay. Other basement windows are small. The clerestorey walls are stuccoed. This gives the rear elevation the appearance of a 2-storey building with the second storey walls stuccoed. There are brick buttresses between the bays. There is a pair of 9-over-9 light windows in each of the three center bays at the first level. Clerestorey windows are 9-light hinged sash, a pair in each of five bays on the north (rear) elevation and four bays on the west elevation. There is a single window on the facade; and the east side, over the stage, is windowless. The clerestorey section has a steep truncated hip roof, covered with slate, with projecting eaves, a boxed cornice, and a plain white frieze. There are exterior chimneys on the east and south sides, the former with a corbelled cap. The 1939 section is U-shaped, forming an open court against the original auditorium. Windows and brickwork, including water table and stringcourse, match those in the older section. The parapet lacks the battlements. The basement is above ground on all sides, and there is a basement entry recess with rusticated brick quoins and jack arch on the eastern side of the building and a round-arched basement entrance at the north end similar to the south entrance in the older section. The 1958 addition connects Jefferson School to Carver Recreation Center, which was built at the same time north of the school. It is similar to the earlier sections in many details. There are entrances on both Fourth Street (basement level) and Fifth Street (first storey level).

HISTORICAL DESCRIPTION

The first public schools in Charlottesville, both for whites and for blacks, were opened in the early 1870's. The first black public school, apparently also called "Jefferson", was located on the north side of Delevan St. east of the Union Station (City DB 3-275, 4-5). The School Board voted in 1893 to replace it with a new building, and a tract on Fourth St. NW was purchased (City DB 4-314). Jefferson Graded School opened in 1894. Located on the parking lot east of the 1939 section of the present building, it was a 2-storey brick building with a hip roof. The school housed eight grades. Benjamin Tonsler served as principal until his death in 1917. By the 1920's the 1894 building had been outgrown and there was a need for a high school. Additional land was purchased in the same area in 1924 (DB 48-46, 152, 472, 474, 475, 478), and the new building known as Jefferson High School opened in 1927. Miss Maude Gamble, who had been principal of the old school, served as principal until the mid 1930's. A large addition was made to the building in 1939. When Jackson P. Burley High School opened in 1951, this building became Jefferson Elementary School. In that year Booker T. Reaves, who had taught there since 1939 and been assistant principal since 1947, became principal, a post he held as long as the building was used as an elementary school. With the removal of high school classes to Burley, the 1894 building was no longer needed for classrooms. It was used as a recreation center for several years and was demolished after Carver Recreation Center was completed in 1959. Another addition to Jefferson was built at the same time. With the integration and re-districting of city schools, Jefferson Elementary School was closed in 1964. It housed all junior high school classes in the City in 1965-66 and all sixth grade classes in 1966-67. It is now used for adult education classes.

HISTORIC LANDMARKS COMMISSION - DEPARTMENT OF COMMUNITY DEVELOPMENT



32-87 ✓

44 acres
525 x 325
B-1

Jefferson School & Carver Rec Center

Sch. Bld., City of Chi'co 1964

2 storeys
 concrete blk found, brick walls, slate hips & built-up flat roof
 built 1924-39 & 1959
 1959 - old Jefferson School Bldg demolished
 2-storey, brick
 plan shows a court in center of "wing section" &

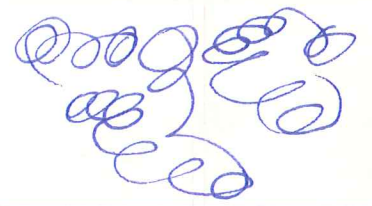
Moore }
pp 320-21 } 3/1893 school board voted to replace Jefferson School bldg, which
"is scarcely fit for school purposes"
pp 328-29 } 1926 enlarged & hs curriculum added, had been only 8 grades
~~p. 389~~

Prog 4/13/62 - Ed. & Med. - p. 14

9/12/1892 Prog story mentioned a black school w/ 358 pupils
1894 Jefferson built
1923 " improvements voted by school board

Sp. 235 } 1870-71 Alb Co (incl Chi'o) public school system organized.
38 schools for whites & 19 for blacks opened immed.

come bel 223



3-5034

Mr. Reaves

little manual 1955
Miss Carter still at Jefferson

old - 8th Miss Maude Gamble - 409 D'ice

built H.S - Miss Gamble until c 1934-35
" Cora Mary Duke - both - c 1 yr
Mr Owen J Duncan "

Reaves - 1937 teach
1947 asst prin

5-11 in new bldg (prob. ~~1937~~ 1939 - 1959 ~~1937~~)

Miss Carter

5/27/66

all 6th grade in Jefferson fall 1966-67
housed all Junior High 1965-66

"Looking at Jefferson" - 1955 yearbook

"Our first free public school was opened around 1872 on a site just north of the Union Station. This school, however, was no longer needed in 1894 when Jefferson Graded School was built. As a result of the rapid growth in population after World War I, & the need for a high school bldg, Jefferson H. S. was opened in 1927. It cont. as a combined h & elem. sch w/ an addition in 1939, until 1951. Since 1951 our sch has been called J. Elem. Sch."

graded (8th) - 1928 Mrs Cora Mary Duke '20's & '30's 45

Mr. Reeves

When was 1st black pub sch estab & where?
near 7th & 5th sta, near Chisholm's business? (see 1955 book)

Moore says Jefferson replaced c. 1893. Were both on this lot?

Was 1893 bldg the one torn down 1959? rec cen lot. "early '60's"

Was oldest part present bldg built 1923-26?

Was one bldg used for elementary & one for high? ✓

What date was ~~the~~ 1st addition built? 1939? ✓

x Where was office, same as after 1959 add'n?

When did Furley open?

Did old school close then, all ~~students~~ ^{1951 fall} → present bldg? yes

~~old sch~~ used for anything afterwards? rec center

What years was he Principal? 1951-1964

Teacher 1890s-1910s, then who? ✓

~~What year?~~ What last year as elementary sch? 1964

Jr Hi in mid-'60's

then all-6th grade

what last year as a regular school?

What did old bldg look like: — storeys, — classrooms, frame or brick,
~~sh~~ gable or hips, metal or shingle

1894 bldg

c1960 aerial photo Vinegar Hill

nearly square, 2-storey brick bldg

S side 7 bays of paired windows in center bay
may be ent. on E. (4th St)

looks like hip roof w/ a single dormer on S, E, & N
& 2 int. end chim on W

basement would be below ground, if there was one

probably was double-pile w/ E-W central hall, 4 rooms at each level,
8 rooms for 8 grades; center windows on N ~~side~~ could be in
cloakrooms

ACDB
4-5
7/22/1892

division of school property
8 schools before formation of City (1858)

Charlottesville:

- 1) "Midway" - ACDB 80-63, 1882
- 2) a lot of houses on south side C&O RR, c 1/4 acre, ACDB 68-697, 1874, fr.
- 3) lot situated in the rear of the Delevan Sch, fr. W D Wheeler, deed not yet recorded

Albemarle:

- 1) 1 acre 8 mi south, ACDB 73-359, 1877
 - 2) 3 acres ^{6 mi} on road to Carter's Bridge, ACDB 93-95 & 97-
 - 3) 1 1/2 acre known as "Salem" School near Hydraulic Mills, 97- , 1886, from James Mooney
 - 4) c. 2 acres on road fr Chi'v to Rio Mills, on north side of road near Rio Station, fr John B. Moon et al, deed not yet recorded; school has burned
 - 5) c. 5 acres on road to Scottsville, known as "Piny Grove" School, fr Wm. O. Fry, deed not yet recorded
- all but Rio lot have schools on them

3-324
9/12/1892

~~W D & Fannie M. Wheeler → City of Chi'ville \$100
12 1/2' strip of land bet. 6th & 7 1/2 St for ^{widening} creation of Dice St.
& (Shackelford line)
Wheeler owned north of Dice bet 6th & 7 1/2 — that
must be where school was~~

3-275
7/18/1889

W D & F M Wheeler → Sch Dist #5 in Alb \$500
lot near junction of C&O & Va Midland
western portion of ACDB 79-258, 1882, fr Robt. Shaw
bounded by SE corner of Va Midland lot (formerly
Paoli lot), ~~fr along RR lot # 174~~ ^{to NE 174'} north to Cabell
St, ESE along Cabell St 195', SW to NE M & Vey
corner, WNW to start

47-454
7/7/24
46-129
1/26/24

Venable 44-61
5/31/23

47-454
48-152
472, 174
46-129
44-61

4-314
1/29/1894

C D Fishburne, ^{exr} John Wood Jr's estate & Louint Handke,
assignee in bankruptcy of B C Flannagan
→ Ch's Sch Bd \$750

lot "on what is known as Toole's Hill", on west side
4th St NW, Lots 3-7 of plat
(Lot #1 = Colored Meth Ch) 201' on 4th, for church lot to
30' st, 150' west to another 30' st, 204' S
along st ~~(must be with)~~ to Lot 2

48-46
8/6/1924

Robt & Mollie Jackson → Sch Bd \$2250
50' x 150' lot on ^{east side} 5th St NW, same as 43-453

48-152
7/28/1924

EF & Peachy's Johnson → Ch's Sch Bd \$1500
53' x 150' lot on east side 5th St NW, same as 30-281
N of Johnson lot, S of former Kinney lot
Johnson reserves right to move bldgs within 60 days

48-472
48-474
48-475
48-478

condemnation of lots on 5th St

DB 48-477
Aug. 1924



Brown Street

Becker

unknown

Jackson

43-253

Woodson

Johnson

30-281

Goodloe

25-123

Colored School

Church

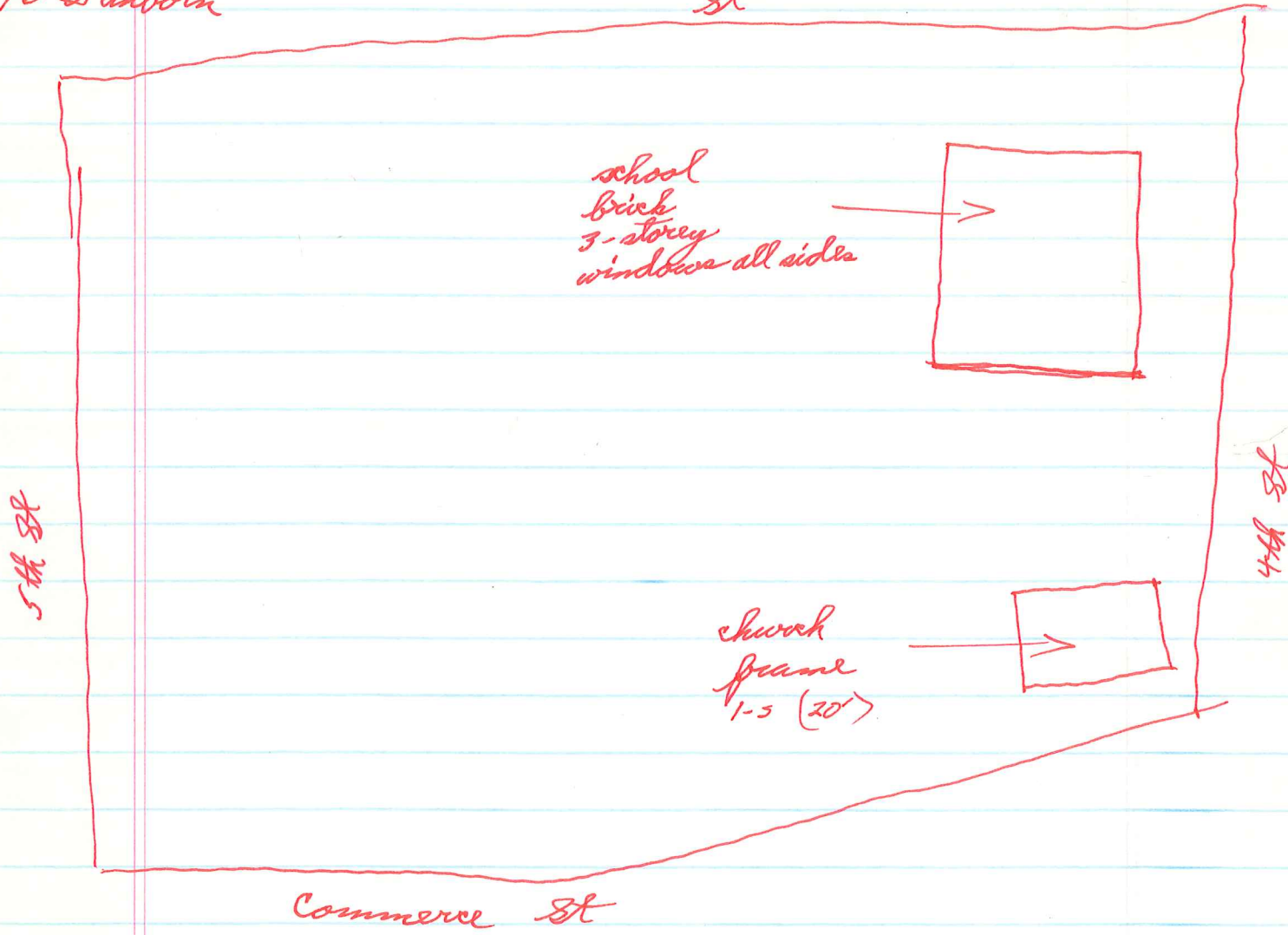
5th St NW

4th St. NW

see plat ACDB(?) 66-253

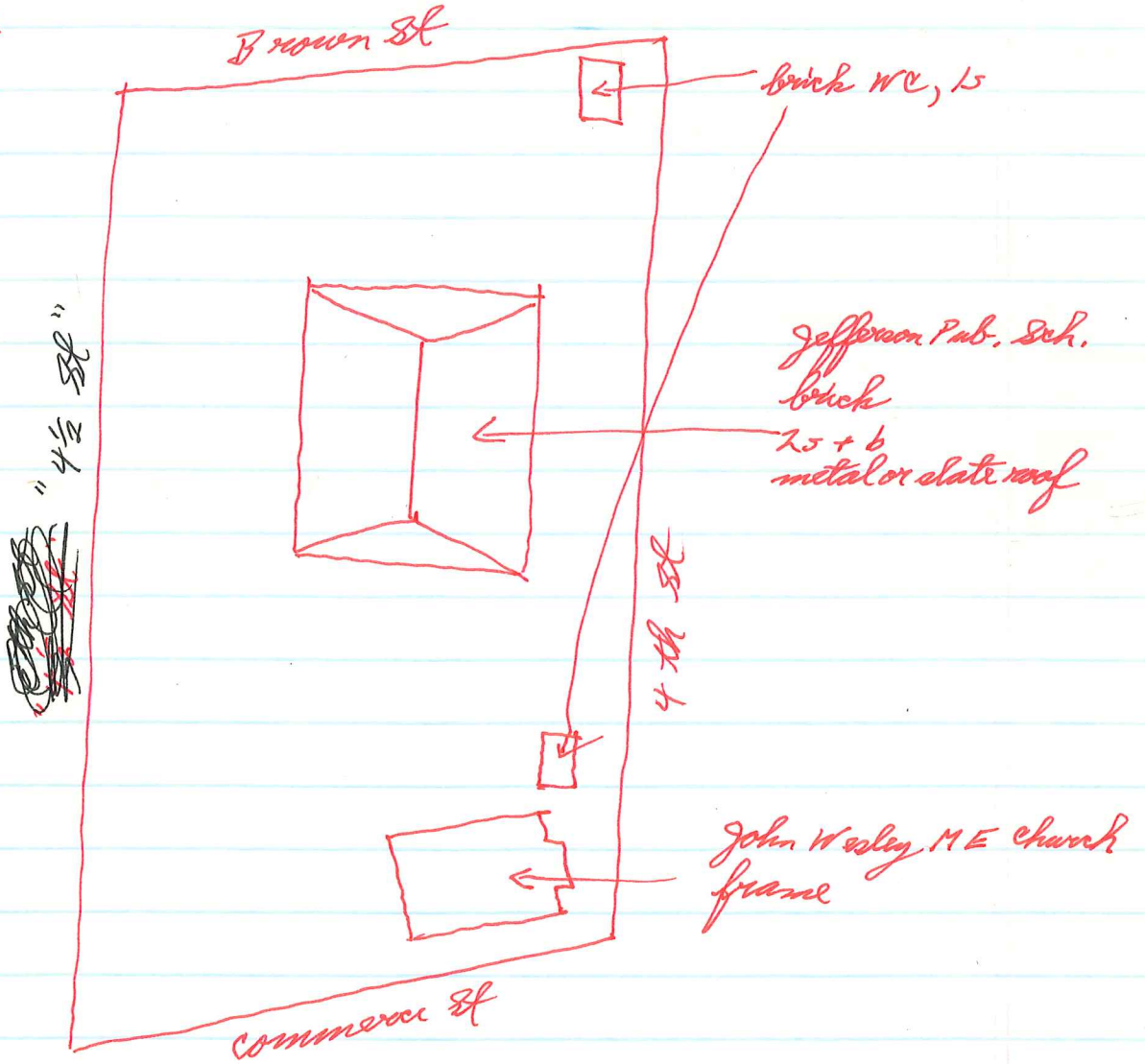
1896 Sanborn

St



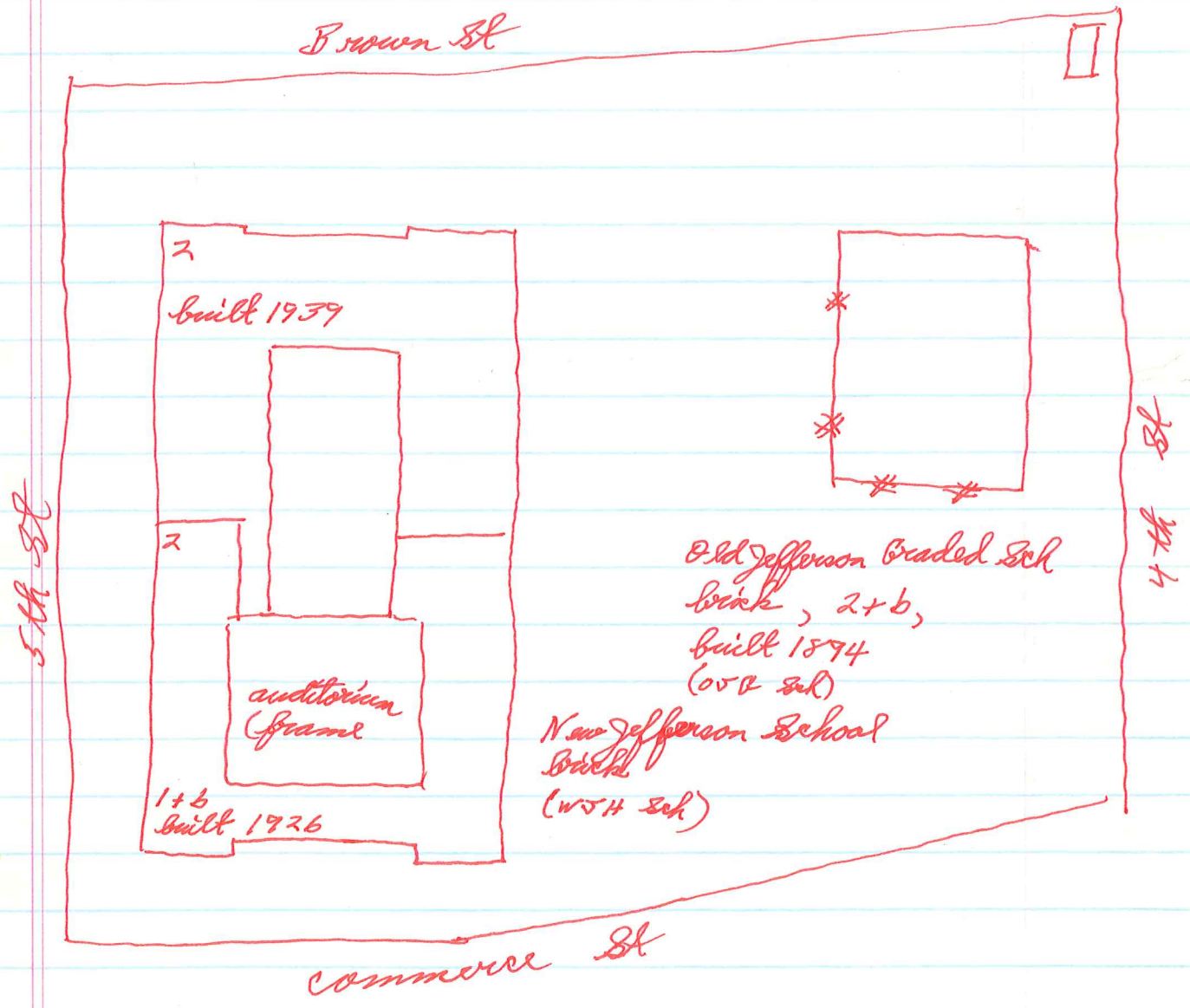
1907 slate or tin roof
faces 4th St?

1920 Sanborn



2/1920 ~

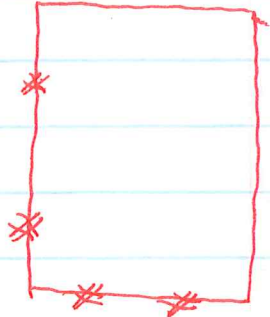
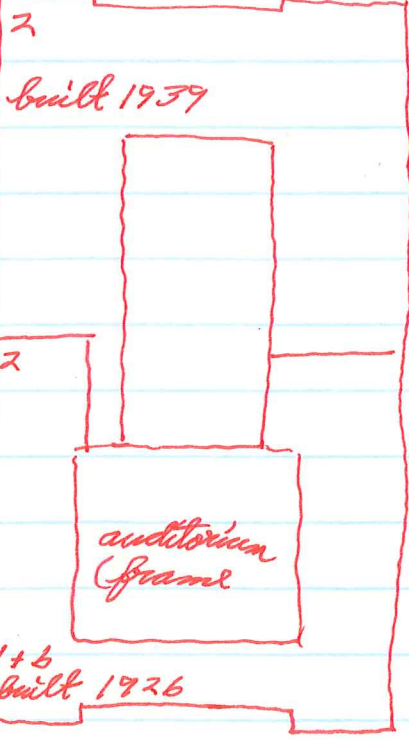
1929-57 Sanborn



Brown St

5th St

4th St



Old Jefferson Graded Sch
brick, 2+b,
built 1894
(OSB Sch)

New Jefferson School
brick
(WJH Sch)

Commerce St

Jefferson School

E side (4th St)

1st storeys, ^{+basement} 7 bays

brick, stretcher bond

~~high~~ found. ^{basement} set in well below 5th & Commerce Sts

^{water table} stringcourse: proj band, ^{header course} vert stretchers

similar stringcourse below parapet, but of tan brick w/ header course proj. farther

built in 2 sections, 5 older

5 3 bays:

conc-capped parapet w/ very wide battlements

each bay, ~~2nd~~ ^{1st} level: band 5 9/9 windows w/ single conc. sill; 2 pr 9/9 each bay ^{base} ~~1st~~ level

N 4 bays:

pl conc-capped parapet

1st bay = center of whole; pr 9/9 at ~~2nd~~ ^{1st} level,

entry recess at ~~1st~~ ^{2nd} level framed by rusticated brick quoins & jack arch (rusticated), brick entab w/ dentils

2nd 3 bays - band 4 9/9 w/ single conc. sill

3rd & 4th " - " 5 " " " " "

5 end (commerce)

1-5 on high basement, all stretchers

3 bays ~~at proj~~ ~~to~~ recessed center of end pavilions

center bay: ~~cor~~

round-arched loggia w/ cor keystone & end blocks
pr door (6l/panel), pl trim, 3-l sidelights over panel,

multi-light rest beam

parapet steps up (wide battlement) & has 3 cor diamonds

end & 4th bay = 4th fl main level

sm basement windows

proj end pav:

0 windows, 1 large ^{rect} panel marked by ^{proj} band ~~has~~ stretchers
w/ sq cor blocks at corners

parapet higher w/ 3 cor diamonds

W side (5th)

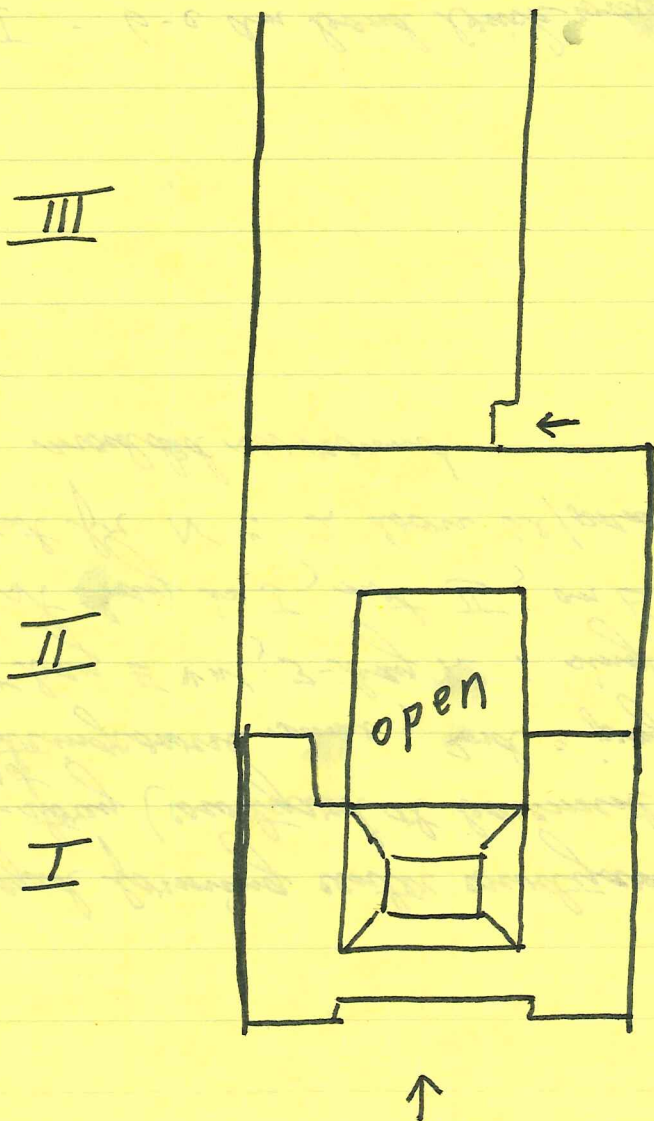
I 3-bay, = 4th^{1st}, sm basement windows

II 3-bay, = 4th

band 5 9/9 each bay both levels except
"center" or "1st" at 1st level; pr + sm window
(orig 2 pr?)

III 4-bay w/ ent bet last 2

band 9 6/6 metal w/ 3-l hinged below each, single one at
basement same 5, ~~then~~ 2 pr ~~at~~ ^{at} 3rd level now last 2
no water table; same stringcourse, but red brick
ent recess than pl wide conc surround
pr door w/ dec glaz transom



II is U-shaped forming center courtyard behind I •
2-story (courtyard at basement level)
stringcourse same; end: gray red stretchers
5 bay E & W, 3-bay N: single 7/7 each level in hall
1st bay in I, not II, on E only, wall II
ent for N: 2 doors w/ panels w/ rect multi-light transoms,
moulded surround

I interior

II - 6-c am bond brick wall in halls
3 rooms each side

round arches² (plastered) set off that 1 bay of I on E side courtyard
& connection bet I & II on W side too

I 3 rooms each side, open off auditorium; S side
2 + ent vestibule
seems to extend 1 bay on W too, but prob only classroom,
not hall ~~see~~ around courtyard,
walls plastered

classrooms: I 6-8

II 12

III 13-14

31-34

"old" bldg (actually part of I)

(for courtyard:)

basement + 2 storeys

" 4 1st storey w/ same water table

2nd storey

brick buttresses bet bays, to ^{corner} roof

ext chim in SE corner courtyard

3 bays on courtyard, 5 total

per sq 9-l hinged (?) 2nd level

per 9/9 1st

1 sq 9-l hinged basement mostly flat

steep truncated hip roof; slate, proj eaves, boxed cornice,
pl white frieze

ext end chim E, corbelled cap

no (see int)

not older, just auditorium of I

5 bays N + S (single window in center bay S), 4 bays W,
no E windows (would be over stage)

N end II

E bay proj & matches blind proj 3 I, except for
diamond on parapet

2nd bay: pr 9/9 1st, round-arched ent. loggia basement;
arch ~~is~~ 5 I; ~~pr~~ door 4 2/panel, multi-l transom, moulded surround

3rd bay: band 3 9/9 each level

4th " " " " 1st, pr basement

E side III

set back fr I + II, only $c \frac{2}{3}$ wide, as courtyard + 1 hall elim

4 bays (or 6), band 9 windows each (see w)

recessed hyphen connects to II:

wall stuccoed; pr door basement, pr windows 1st on ^{top} balcony

"1958" incised in conc panel over 1st level windows

entry recess bet last 2 bays

brick wall

name Jefferson Sch in metal letters on parapet

III connected to lower Rec center at basement level

