

LANDMARK



SURVEY

IDENTIFICATION

Street Address: 914 East High Street
Map and Parcel: 53-272
Census Track & Block: 3-214
Present Owner: Grace R. Tilman
Address: 914 East High Street
Present Use: Residence
Original Owner: James A. Colvin
Original Use: Residence

BASE DATA

Historic Name: Colvin-Tilman House
Date/Period: 1893
Style: Victorian
Height to Cornice:
Height in Stories: 2
Present Zoning: B-1
Land Area (sq.ft.): 50' x 235' (11,750 sq.ft.)
Assessed Value (land + imp.):

ARCHITECTURAL DESCRIPTION

This large and handsome Queen Anne House is square with a projecting side bay on the facade, an octagonal tower set into its west side, and an original 1½-storey rear wing. It is two bays wide, double pile (triple pile with rear wing), and two stories tall on a high foundation. The brick is laid in American bond, six-course predominating above the water table. It has a steeply-pitched slate hip roof, truncated near the peak, with a steep gable over the projecting bay on the facade and a boxed cornice with decorative rafter ends applied. The western slope of the hip roof over the 1½-storey rear wing sweeps down to shelter a small one-storey section which now wraps around the back as an enclosed porch. The roof is pierced by two interior chimneys and by dormers on the facade and east side, and on all three sides of the wing. All have walls of patterned tin and slate rooves, gable in the front section and hip in the wing. All have double-sash windows, six-over-six light, except the one on the facade, which is single-light, bordered by small panes of stained glass. The two-storey tower is set into the west wall as a semi-octagonal projecting bay with the rear slope of the roof continuing as one plane of its pyramidal roof, topped with a finial. Windows on its first level are segmental-arched and, like the others in the house, are single-paned, double sash with wooden sills and moulded surrounds. There is a two-storey rectangular bay window on the shallow projecting side bay of the facade. The windows on its first level are also segmental arched and decorated with a delicate pierced vine design. A small balcony sits on the truncated bellcast

HISTORICAL DESCRIPTION

hip roof of the bay window, sheltered by the projecting verges of the gable above. The bargeboard and bracketed posts form a trefoil shape. There is a low spool balustrade. Access is by a circular-headed attic window. The veranda wraps around the northwest corner of the house. It has a low-pitched tin hip roof with boxed cornice; spindle frieze; tapering Eastlake posts with sawn brackets, set on square pedestals; and turned balustrade. The side portion has been enclosed with weatherboarding for a sun parlor. The entrance door has five panels with moulded rails. A three-flight, open-well staircase with ornamental brackets and Eastlake balustrade rises from the large entrance hall in the northwest corner of the house. It was formerly lighted by a window bordered by small panes of stained glass, now covered by the sun parlor. All the rooms have fireplaces with Victorian mantels. Doors and windows have symmetrically moulded trim with corner blocks. The parlor has moulded plaster ceiling decoration.

GRAPHICS

This house has been owned and occupied by only two families during its 85-year history. It has undergone very little alteration, and virtually all original fabric is intact. James A. Colvin purchased a lot on "the extension of High Street" from Samuel B. Woods in 1891 (City DB 2-430). According to tax records, he built this house there in 1893. The present owner, Grace R. Tilman, purchased the house from Colvin's executors in 1942 (DB 111-469).

SIGNIFICANCE

With its trefoil balcony and its broad and low octagonal tower, this house is one of the most impressive examples of the Victorian style in the city.

CONDITIONS

Good

UTM: 17/721810/4212080

SOURCES

City Records
Grace R. Tilman

*Architectural And Historic
Survey*



Graphics



City Tax Assessor

914 E High

111-469

Grace R Tilman 1946

see file for prior references

built 1890

ave concrete

2 stories, 9 rooms, 1/2 baths

brick, slate hip

914 E High

1907

1920



same?



~~2-430~~ ~~2-430~~

914 E. High

111-469 Myrtle R. Hoagraven & Robert A. Watson, exec of Annie E. Colvin, dec
8/5/1942 → Grace R. Tilsman \$5200

#914 E High, residence of late ^{James A &} Annie E. Colvin

see WB 3-395, 5-95

to Colvin by 3 deeds:

10/5/1891 for Samuel B. Woods DB 2-430

12/2/1893 " Lilly J. Harrison 4-432

2/5/1897 " Agnes Flanagan 7-470

2-430 Samuel B & Lucretia B. Woods → J A Colvin \$475

10/5/1891 lot on extension of High St

4-432 Woods → Harrison → Colvin

12/2/1893

7-470 Flanagan → Colvin

2/5/1897

Tax

1894	1891 J A Colwin	Free Bridge St	+ 200 = 2500	Sand B Woods
1893	" "	" "	+ 0 = 400	-
1892	" "	" "	" "	SB Woods

~~the church~~

moulded plaster ceiling [↳]
fireplaces w/ vic mantels in room
3-f stair, on side, E
single boarded stair window
moulded w/ corner
sliding doors
3 br,

top of truncated
wide cornice board ^{or barge}
QE masonry [↳] boarded cornice, fake gable-end brackets [↳]
steep state hipe roof, gable w/ patterned tin (?) over front bay
4-8 & an band, 6 predominates
high ~~and~~ found, stepped water table, ^{full} basement nearly above gr level, ^{6' band}



veranda - ^{tin hipe} sawn brackets, spool fringe, orn dentils, ^{VE? posts} on sq pedestals
Col Rev balustrade, 4 steps; side post on w/ weatherboarding ^{on sq pedestals}
3-panel ent door w/ moulded rails
windows single-paned, double-cash, wooden sill,
moulded surrounds ^{for architrave}
2-storey rect bay window on projecting bay of facade;
windows paired on front, single on side
seg-arched 1st level, w/ keystone on facade (pierced in same
design above window), 2nd level seg, right under cornice
balcony above: under peak of gable
trifol bargeboard-posts ^{on sq pedestals} w/ ^{spool} balustrade
low spool balustrade
on truncated bellcast tin hipe roof of bay window
round-headed window ~~and~~

photo now:
barge
saw & barge
spool

tall gabled dormer on facade, double sash window bordered
w/ stained glass (each sash), sides same patterned to
another on east side w/ 6/6

semi-circ ~~side~~ projecting bay on west side
seg. arched windows 1st level & 2nd
finish at peak of tower-like hip roof

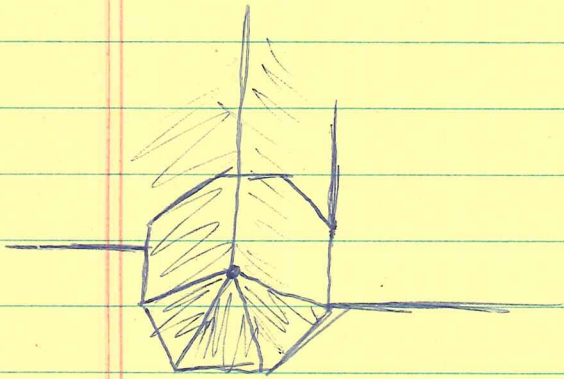
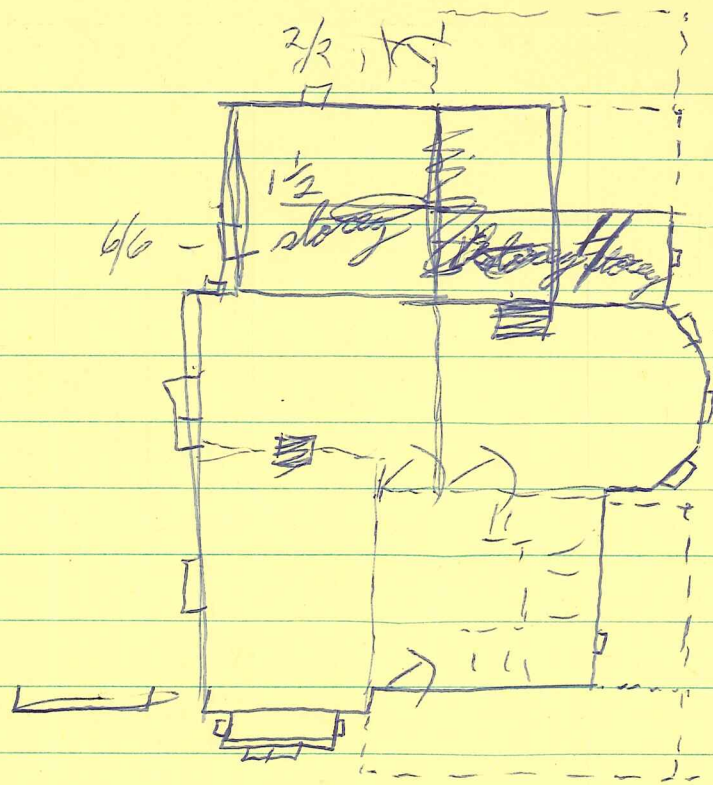
rear wing - bonding & window trim, ^{2 stories} 6/6 + smaller
(History, brick)

rear window 2/2

rear wing - 1 1/2 - story

hip roof, cont over 1-story west part

" " dormers, 6/6, the sides, west & east
original!



237

CITY OF CHARLOTTESVILLE

Department of Community Development

City Hall

Charlottesville, Virginia 22902

Colvin-Tilman House

914 East High Street

