

Architectural And Historic Survey



Identification

STREET ADDRESS: 2001 Thomson Road

MAP & PARCEL: 13-71

CENSUS TRACT AND BLOCK:

PRESENT ZONING: R-1

ORIGINAL OWNER: M. C. Elliott

ORIGINAL USE: Residence

PRESENT USE: Residence

PRESENT OWNER: Margaret Dewberry Baxter

ADDRESS: 2001 Thomson Road
Charlottesville, Virginia

HISTORIC NAME: M. C. Elliott House

DATE / PERIOD: 1935

STYLE: Colonial Revival

HEIGHT (to cornice) OR STORIES: 2 storeys

DIMENSIONS AND LAND AREA: 285' x 110' (31,350 sq. ft.)

CONDITION: Good

SURVEYOR: Bibb

DATE OF SURVEY: Spring 1981

SOURCES: City Records

Mrs. Edmund Baxter (Margaret Dewberry Baxter)

ARCHITECTURAL DESCRIPTION

The Georgian Revival design of the M. C. Elliott House is based on the Diggs House in Williamsburg. It is two storeys tall, single pile, and three bays wide, with a slightly projecting pedimented central pavillion. It is set on a high foundation of brick laid in English bond and has a full basement. Above the moulded brick water table, brick is laid throughout the house in Flemish bond with glazed headers. Three projecting courses of stretcher bond form a stringcourse. The steep hip roof is covered with slate and has an entablature with modillions. There are two interior end chimneys with stringcourses and corbelled caps. Windows are double-sash, 12-over-12 light, at both levels with flat arches and paneled shutters. Those at the first level are segmental-headed. There is a one-storey semi-octagonal bay window in the north bay of the rear elevation. It has a steep tent roof covered with sheet metal with a boxed cornice and decorated frieze. There are single 12-light casement windows at the sides and a pair in the center plane, all with paneled spandrels. There is a wide 15-over-15 light window with a jack arch with keystone at the second level of the central pavillion on the facade. Below it is a frontispiece entrance. Tapering pilasters with inset panels bordered with egg-&-dart moulding carry an entablature with cushion frieze, cartouche, and broken segmental pediment with a pineapple. The double entrance doors with three raised panels are recessed and have a 7-light rectangular transom. A two-storey pedimented portico covers the center bay of the rear facade. Between semi-elliptical-arched openings at the first level (now with sliding glass doors), tapering pilasters with inset panels carry an entablature with cushion frieze and cartouche. This continues around a semi-octagonal projection (still open) set one step lower. Both have flagstone floors with borders of moulded brick. The rear entrance consists of double doors with architrave trim. At the second level, two pairs of Tuscan columns support the pediment. This upper porch has been enclosed with screen wire inside the columns. Its simple balustrade continues as a roof balustrade over the semi-octagonal end of the lower porch. A one-storey sun parlor covers the rear half of the south end of the house. Its windows are segmental-headed groups of 18-light casement windows with paneled spandrels. Tapering pilasters carry an entablature with cartouche. There is a Chinese Chppendale balustrade around its flat roof. A small one-storey porch at the front of the north end of the house has been enclosed. It has a slate gable roof with close eaves and verges, a simple entablature, and tapering square posts. The stair hall with curved staircase is set one step above the entrance hall and is separated from it by a semi-elliptical arch supported on fluted pilasters. The parlor has enriched mouldings and cornice.

HISTORICAL DESCRIPTION

M. C. Elliott, one of the owners of Elliott Ice Company, purchased this lot in 1935 (ACDB 227-78) and built the house the same year, according to tax records. Milton Grigg was the architect. Instead of facing Thomson Road, it faces East, toward the University. The U. Va. Graduate Business School Sponsors bought the house in 1966 (City DB 280-154), then sold it in 1973 to William Edmund and Margaret Dewberry Baxter (DB 351-272), who had rented the house from Mrs. Elliott in the early 1960's.

13-71 ✓

R-1
285' x 110'
= 31,350

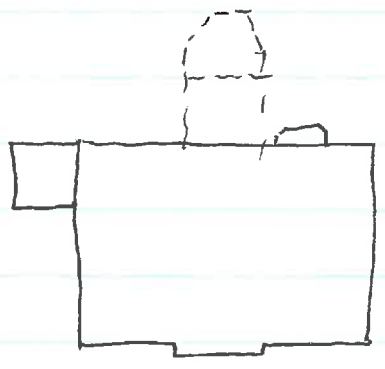
2001 Thomson Rd

351-272	Margaret Dewberry Baster	1976	400,000
"	Wm Edmunds " " "	1973	
280-154	Uva Brad ^{Bus} Sch, sponsor	1966	
ADD 327-78	MC Elliott	1935	

Thos J. Towles

built 1935, expensive const
 7 rooms, 3 1/2 baths, full basement
 2-story
 brick & conc found, brick walls, slate h/p
 2 fireplaces, 1 stack

1935
 MC Elliott House



6-5960

Mrs. Baxter
architect - Milton Brigg
name - once had a name

Fair mt? view?

not old

not want newspaper article
call her, might be in yard

2001 Thomas Rd

ACDB

227-78

Thos T & Alice O. Towles, Oliver P & Cecile H. Towles, & Eleanor

3/25/1935

W. Towles → M. C. Elliott

\$ 2700

Lots 55 & 56 in plat of Union Park or Towles Addition ACDB # 214-506

part of 91-322

Towles agree to extend water & sewer lines to lot

1936

M. C. Elliott

Towles add

$600 + 4900 = 5500$ \$ 4900 added for bldgs

2 proj pedimented central pavillion

2001 Thomson

2-storey, 3-bay, single-pile

high found^{Egg} & ~~brick~~ bond, full basement
water table - moulded brick

Film bond w/ glazed headers

stringcourse: 3 proj courses stretcher

central pav w/ flanking wings (cent bay proj & has ped^{brick})

mod-high hip roof, slate, proj eaves & verges, entab w/ modillions

corbelled
capped int end chimneys, stringcourse

windows 12/12 & straight arch, paneled shutters, wooden sills,
o surrounds?, same ht both levels

seg-headed at 1st level

wider 15/15 center bay 2nd level facade, w/ some keystone
basement^{pr} short ~~end~~ 4-l casement, seg-headed, straight arch

frontispiece ent;

^{top plaster} plaster w/ inset panels bordered w/ egg-&-dart
support entab w/ cushion fringe, cartouch, & ~~rod~~
& broken seg ped w/ volute (pineapple??)
recessed double ent door w/ 3 raised panels; 7-l rect transom
5 marble steps, wrought iron rail

1-storey sun parlor covers rear ^{bay} half 5 end

seg-headed ^{triangular} groups each side; 3 18-l casement front & rear, ^(pr) 4 on end
paneled sashels

^{top plaster} plaster (not fluted) support entab (no modillions) w/ cartouch
Chinese Chippendale roof bal, flat roof

spiral stair in stair hall, 1 step higher & sep fr ent hall by
semi-clip? arch of fluted pilasters
parlor: enriched cornice & mouldings ^{on mantel} above fireplace

faces Univ across lower land

2-storey portico covers ent bay rear

1st level: now end w/ ^{sliding} slate glass doors

^{in sun parlor?} 7-seg-headed openings, ^{tapering} pilasters (but w/ no plain inset panels),
entab (w/ cushion frieze) of cartouche, no modillions

This cont around semi-oct porch, still open, 1 step lower;

~~as~~ both w/ soapstone floor bordered w/ moulded brick ^{single roof bal}

2nd level: 2 pr Tuscan ^{columns} support pediment

& continuation of ~~low~~ entab of main roof

single bal cont around semi-oct

now end w/ screen inside columns

semi-clip arches sep fr moulding giving effect of pilasters

1st level: pr 6-l/panel doors w/ arch trim

1-storey ^{semi-oct} bay window in N bay rear

12-l eavesment side bays, pair in center; paneled gandrills
^{slat} tent roof of sheet metal; boxed cornice, dec. ^{wooden} frieze (drip ^{rows})

small 1-storey glass-end ^{back?} porch covers front bay N end
w/ wooden floor.

tapering sq posts, ^{or pillars} w/ capitals

med gable roof, ^{slate} shingles, close eaves & rafter

6/6 windows ~~at~~ rear, 2 N end, door front

garage; Flem band, no water table, steep slate ped gable roof, 6/6 w/
paneled shutters, str arch, seg-headed pr & eavesment in gable; boxed cornice
^{boards of wallboard at end}

2001 THOMSON RD.

°1935 (assessor)

1936 - has 39x28' slate roof.



res.

#405

~~Rivendale - see again, go inside?~~

1914-15 City Dir Elliott Sec Co = John F. Elliott Sr & Jr, 800 E High

1953 Miss Frank Elliott - 1946 Thomson Rd

Lucy D. Elliott - 2001 Thomson Rd

2001 Thomson Rd

owner: Univ. of Va. Graduate Business
School Sponsors
purchased 1966
from Millard C. Elliott

c. 1970