



City of Charlottesville Board of Architectural Review

July 16, 2019



Process/Schedule

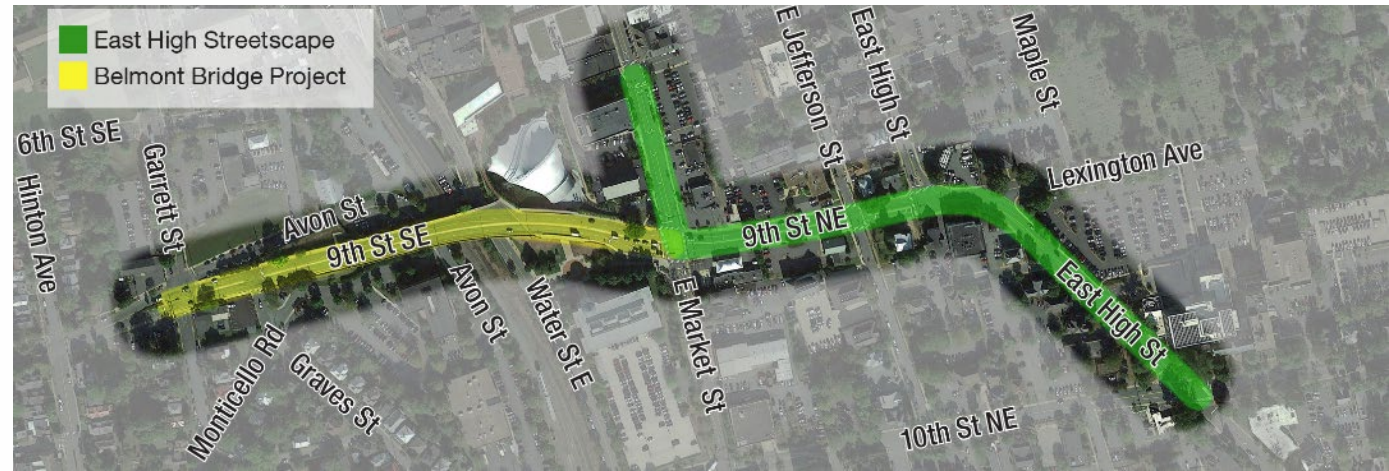


Project Overview

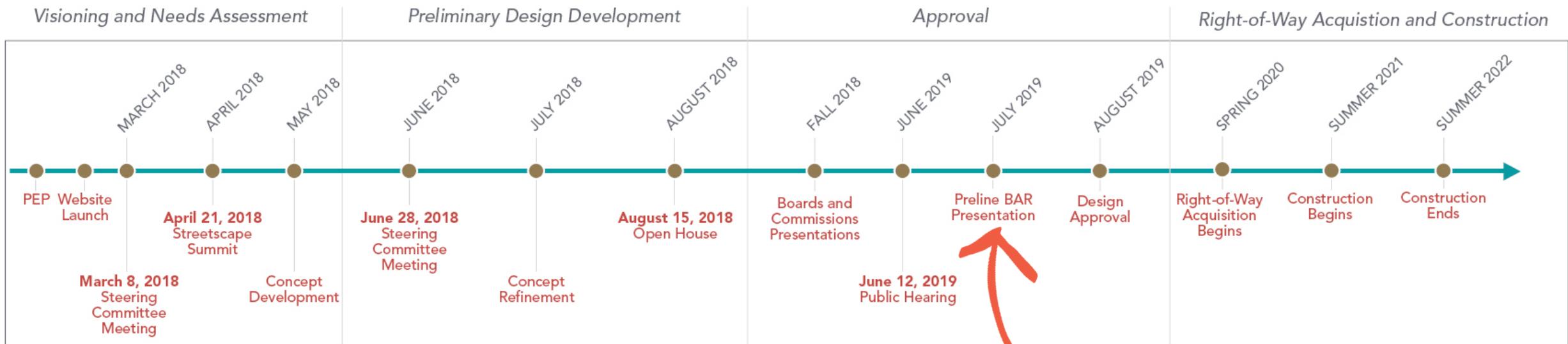


- Funded in 2016 through  SMART SCALE Funding the Right Transportation Projects in Virginia
- Multimodal improvements including:
 - Wider sidewalks, bike lanes, landscaping, ADA and pedestrian improvements, wayfinding and signal upgrades.
 - Evaluate undergrounding overhead utilities
- E. Market Street
 - From 7th Street to 9th Street
- 9th Street
 - From E. Market Street to E. High Street
- E. High Street
 - From 9th Street to 10th Street

Total Budget: \$7.16 Million
(Not including potential underground utility betterment)



Process/Schedule



We are here!



Public Engagement Overview



Visioning & Needs Assessment

As of December 2019



Steering Committee Meeting #1

17,500+

individual data points

EastHighStreetscape.org Website

1,000+

touch points

500+

written comments

Streetscape Summit

MetroQuest Survey

Steering Committee Meeting #2

Open House

Presentations to City Committees

Approval by Planning Commission

Approval by City Council

Coordination with Active Developments

Key Takeaways

- Overall, pedestrian facilities and multimodal mobility is a priority
- Desire to provide a safe and walkable street that enhances neighborhood connections
- Utilize design features and proposed amenities to enhance the overall environment for all users

Vision & Needs Assessment

Common Themes and Key Takeaways

- **Key Words** | safe, walkable/pedestrian-friendly, functional

- **Priorities**

1. Pedestrian Facilities
2. Landscaping
3. Bicycle Facilities
4. Traffic and Travel Speeds
5. Lighting



- **Challenges** | traffic volumes, limited space/competing priorities, Lexington and E. High intersection

- **Outcomes** | conformance to Comprehensive Plan & City Council approval



Preliminary Design Development

Design Public Hearing – Key Themes & Takeaways



46

attendees

30+

written comment
forms or e-mails

Key Takeaways

- Overall support of bicycle and pedestrian improvements
- Desire for planting palette enhancements including larger canopy trees
- Interest in how planned Tarleton Oaks development works with streetscape
- Support for conversion of existing overhead utilities to underground
- Concerns expressed regarding traffic
- Challenges with competing priorities in limited space and need for compromise

Preliminary Design Review



60% Design

Project Location

Charlottesville, Virginia

North Arrow & Scale

GRAPHIC SCALE IN FEET

Legend

- Proposed Asphalt
- Proposed Sidewalk
- Proposed Stormwater Best Management Practice (BMP)
- Proposed Green Bike Pavement Marking
- Area Under Further Study
- Proposed Trees
- Existing Right of Way
- Proposed Right of Way Line
- Proposed Permanent Easement
- Proposed Temp. Construction Easement
- Proposed Curb
- Proposed Pedestrian Signal
- Proposed Signal

Contact Information

Written comments may be sent by June, 22 2019 to:
 Tim Molsch
 City of Charlottesville
 610 East Market Street
 P.O. Box 911
 Charlottesville, Va. 22902

E-mail comments may also be sent to:
 molscht@charlottesville.org

Visit www.EastHighStreetscape.org for more information

East High Streetscape
 Charlottesville, Virginia

State Project: U000-104-298
 UPC 106480

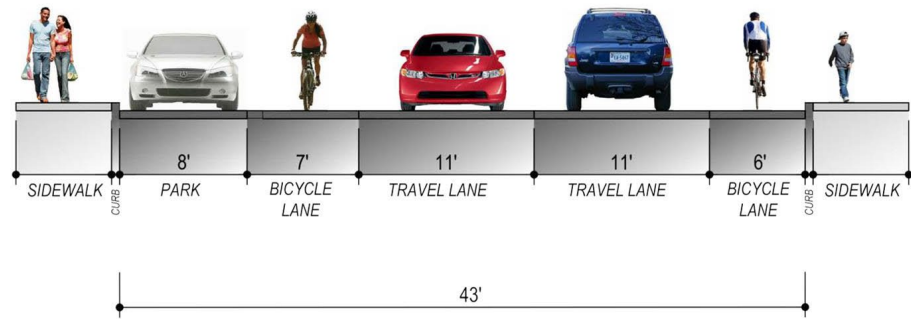
These plans are unfinished and unapproved and are not to be used for any type of construction or the acquisition of right of way. Preliminary easements for utility relocations are approximate only and subject to change as project design is finalized.

Imagery Courtesy of the Commonwealth of Virginia copyright 2018

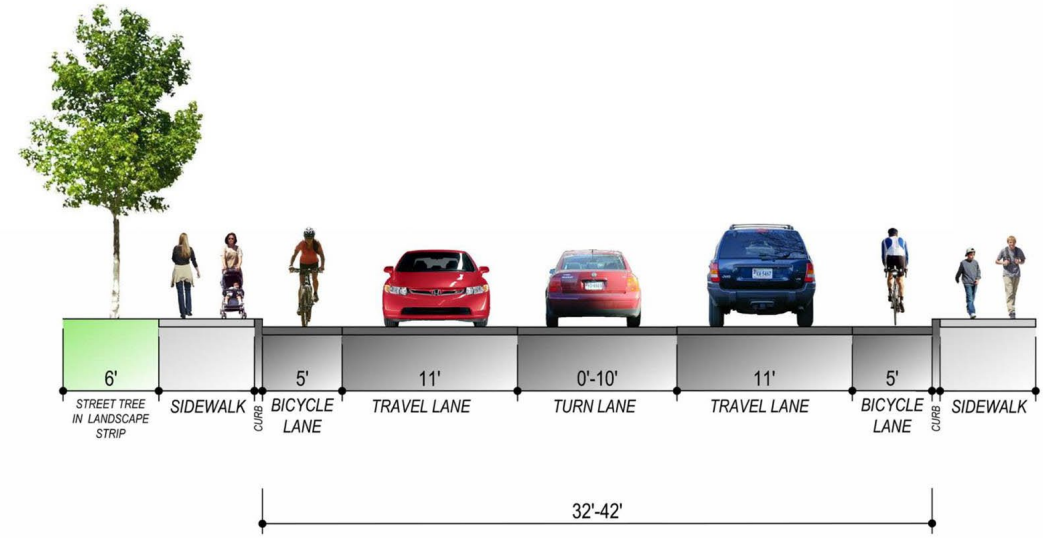


Preliminary Design Development

E. Market Street



SECTION A - MARKET ST BETWEEN 8TH ST. AND 7TH ST.

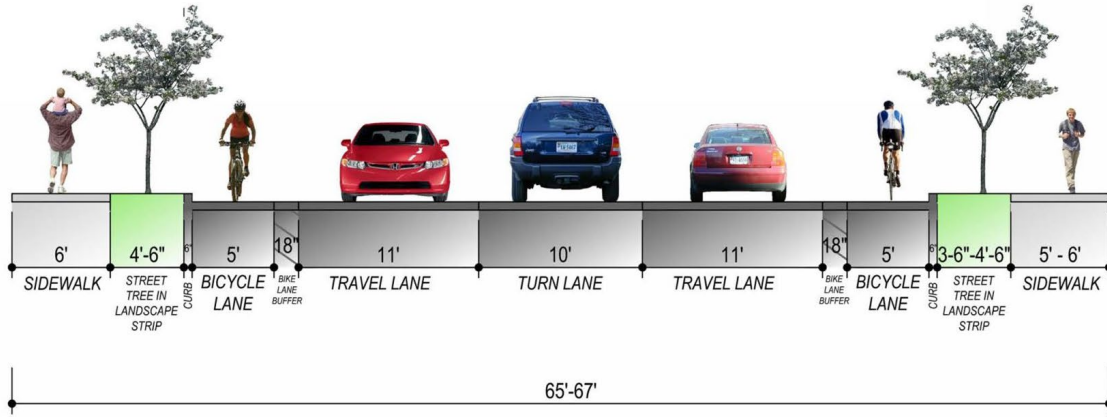


SECTION B - MARKET ST BETWEEN 8TH ST. AND 9TH ST.

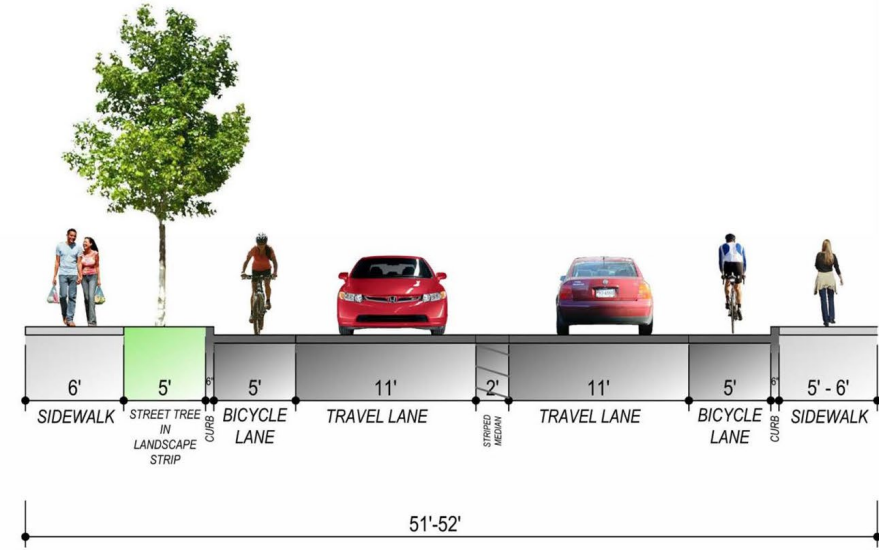


Preliminary Design Development

9th Street NE/E. High Street



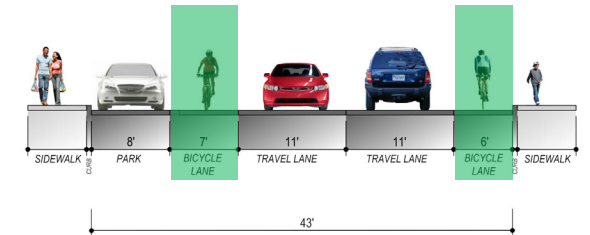
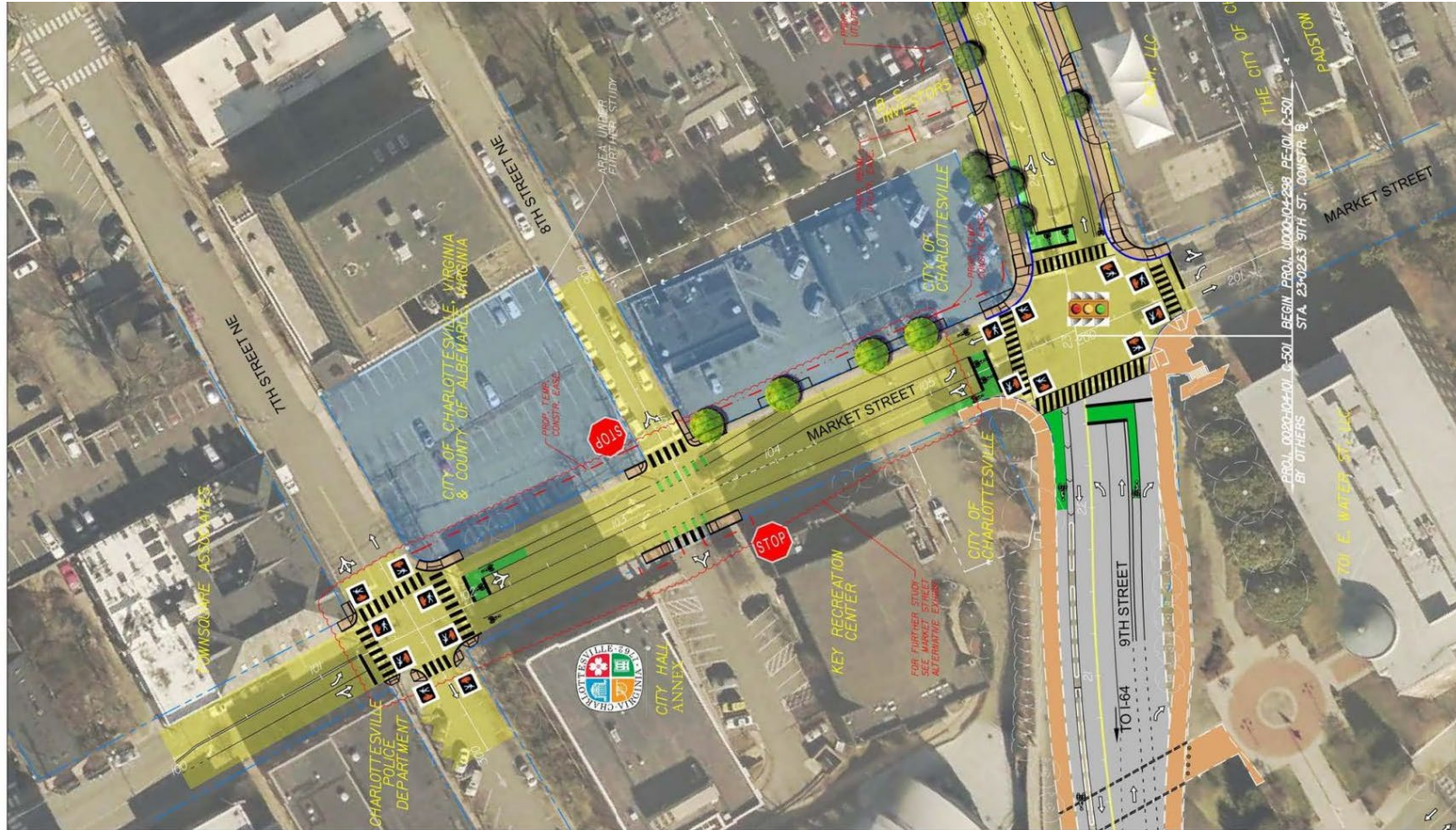
SECTION C - 9TH ST. BETWEEN MARKET ST. AND E. JEFFERSON ST.



SECTION D - EAST HIGH ST. BETWEEN 9 1/2 ST. AND CFA



Preliminary Design Development Restriping for Bike Lanes on E. Market St.

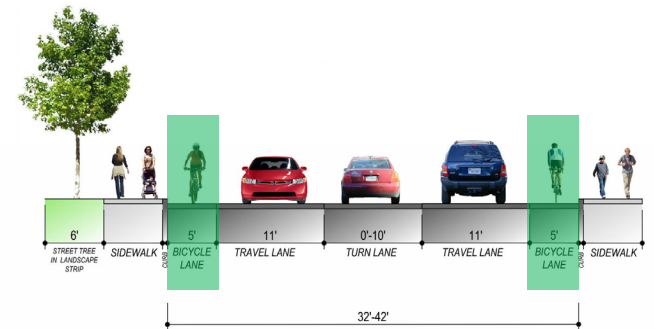


SECTION A - MARKET ST BETWEEN 8TH ST. AND 7TH ST.

EAST HIGH
STREETScape



TYPICAL SECTION
October 2024
Kimley-Horn



SECTION B - MARKET ST BETWEEN 8TH ST. AND 9TH ST.

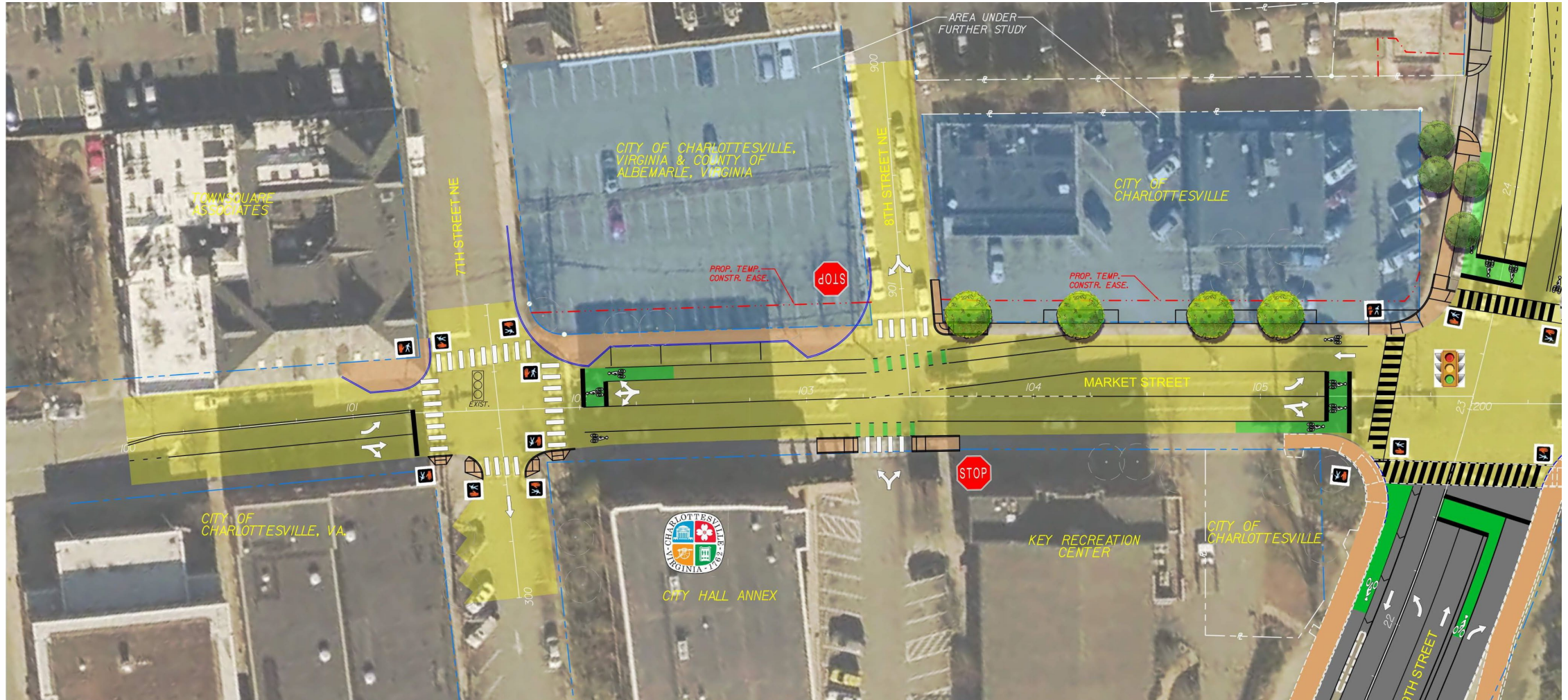
EAST HIGH
STREETScape



TYPICAL SECTION
November 2024
Kimley-Horn



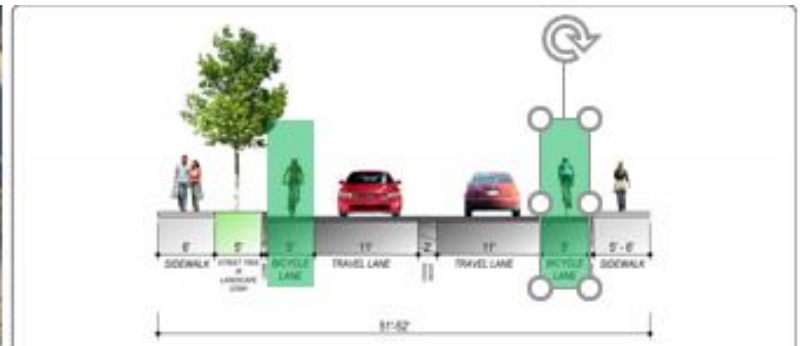
Preliminary Design Development ADA Improvements on E. Market Street



Preliminary Design Development Bike Lanes on 9th St. NE and E. High St.



SECTION C - 9TH ST. BETWEEN MARKET ST. AND E. JEFFERSON ST.



SECTION D - EAST HIGH ST. BETWEEN 9 1/2 ST. AND CFA



Preliminary Design Development Improvements at 9th Street NE/E. High Street



Existing Condition



Proposed Improvements

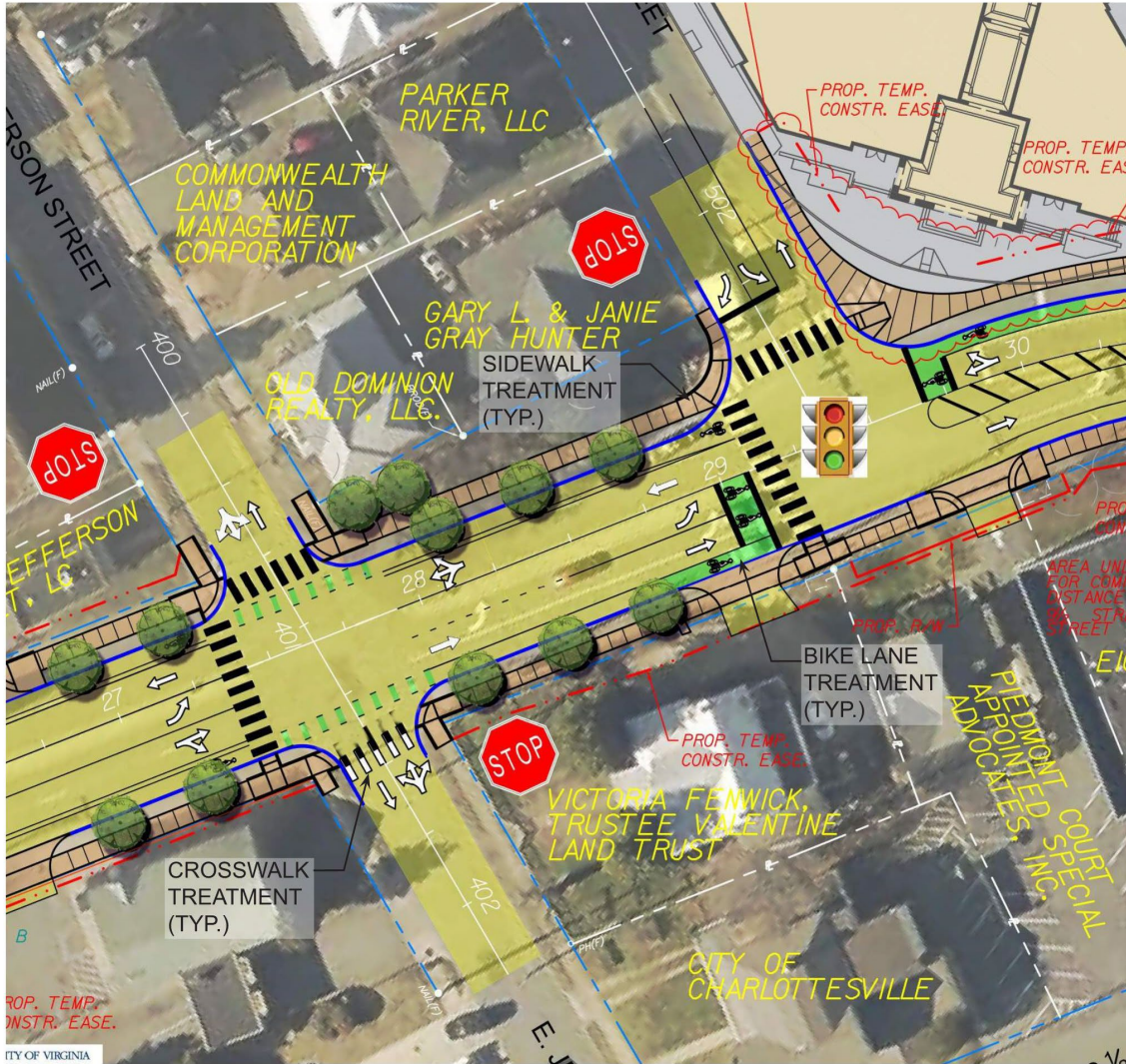
****Note:** The project team is currently working with the Tarleton Oak development to develop a coordinated design



Preliminary Design Development Materials and Hardscape



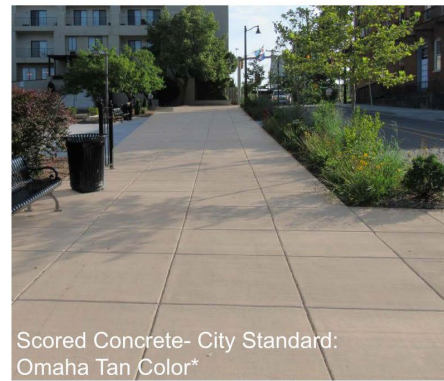
Materials



Note: Materials are consistent with the Belmont Bridge Project



Standard Asphalt Crosswalks:
Striped / Painted



Scored Concrete- City Standard:
Omaha Tan, Color*



Asphalt Paving:
Painted Bike Lanes & Crosswalks



Furnishings



Landscape Forms: FGP Backed Bench



Landscape Forms: MultipliCITY Bike Racks



Forms and Surfaces:
Dispatch Trash Receptacle

Note: Materials are consistent with the Belmont Bridge Project



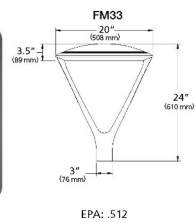
Lighting

Kim Lighting Ouro Pedestrian Light

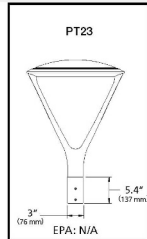
SPECIFICATIONS



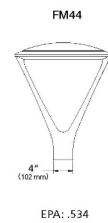
Weight: 35 lbs



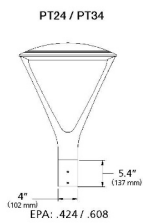
EPA: .512



EPA: N/A



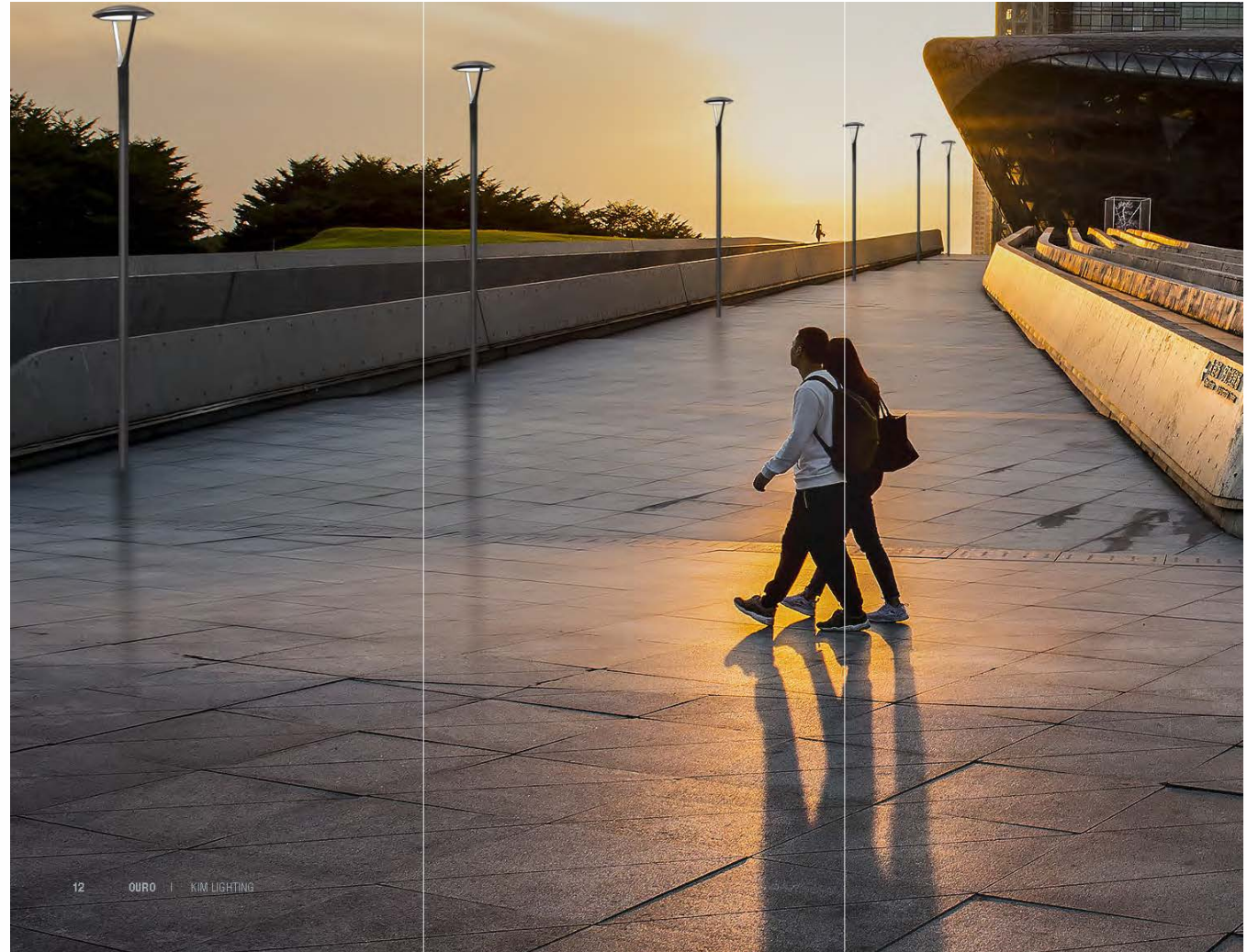
EPA: .534



EPA: .424 / .608



Note: Materials are consistent with the Belmont Bridge Project



Preliminary Design Development Planting

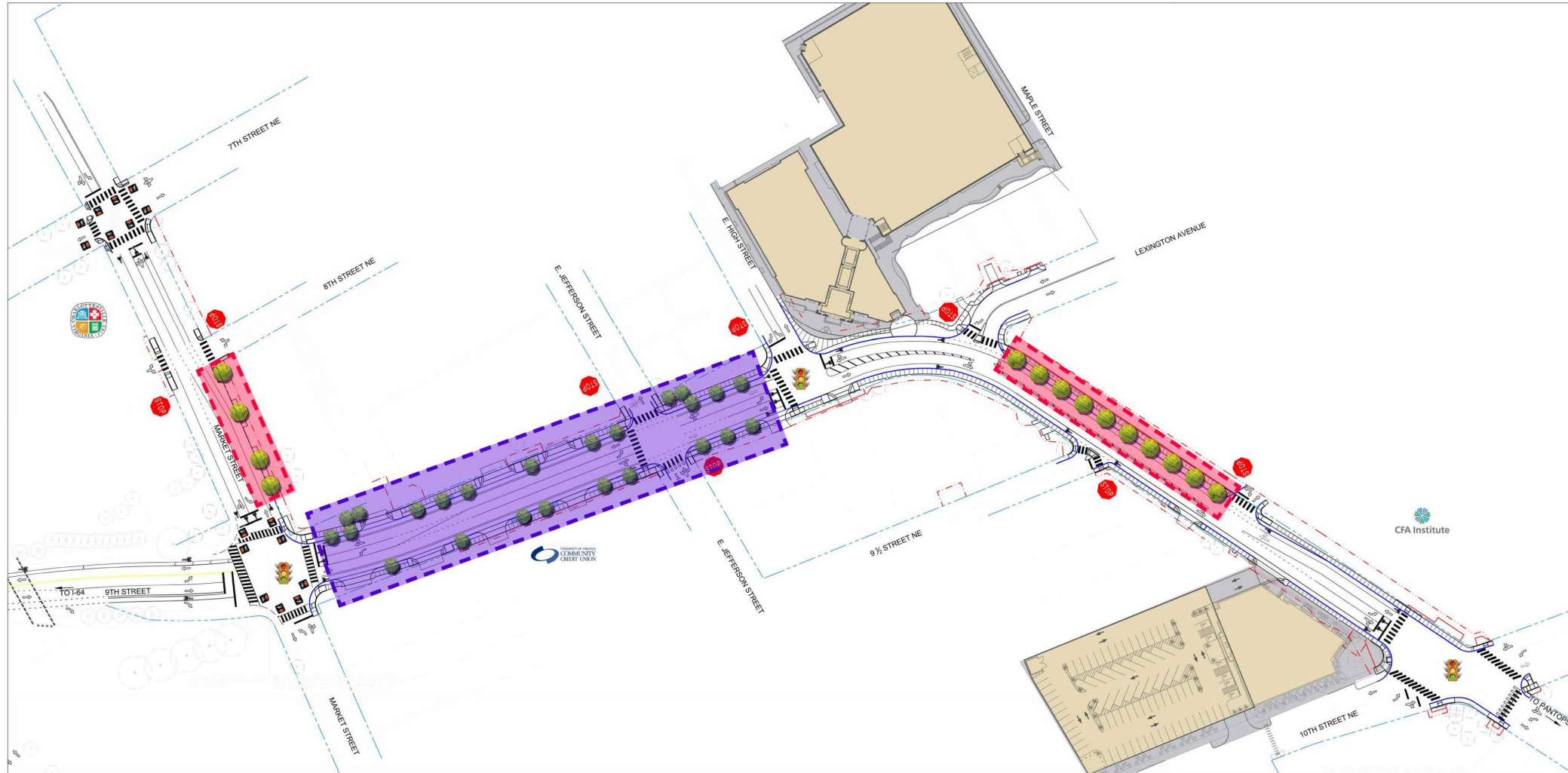


Planting Palette Presented at Public Hearing

- Proposed Canopy Trees
Potential Species:
 - Ginkgo Tree (Male)
G. bilboa
 - American Elm 'Jefferson'
U. americana
 - 'Armstrong' Red Maple
A. rubrum 'Armstrong'
 - London Plane Tree
P. x acerifolia

- Proposed Understory Trees
Potential Species:
 - Flowering Dogwood
C. florida
 - Serviceberry (multi-stem)
A. grandiflora
 - Eastern Redbud
C. canadensis
 - River Birch
B. nigra 'Heritage'

Note: Tree species selected are consistent with Charlottesville's Master Tree List



Belmont Bridge Planting Palette



BELMONT BRIDGE

MASTER PLANT SCHEDULE

TREES	QTY	SHEET 3	SHEET 3B	SHEET 4	SHEET 5	BOTANICAL NAME	COMMON NAME	CONT	CAL	SIZE	REMARKS	
BO	12	10		2		BETULA NIGRA 'DURAMEAT'	DURAMEAT RIVER BIRCH	8 & 8	10' HT. MIN.		STRONG CENTRAL LEADER, MULTI-STEM, 3 MIN-6 MAX.	
CH	20	10	6	4		CERCIS CANADENSIS 'HEARTS OF GOLD'	HEARTS OF GOLD REDBUD	8 & 8	10' HT. MIN.		STRONG CENTRAL LEADER	
DB	11			4	7	GINKGO BILOBA 'AUTUMN GOLD' TM	MADDENHAIR TREE	8 & 8	3.1' CAL. MIN.		STRONG CENTRAL LEADER, MATCH	
GF	4	1		3		GINKGO BILOBA 'FASTIGIATA'	FASTIGIATE MADDENHAIR TREE	8 & 8	3.1' CAL. MIN.		STRONG CENTRAL LEADER, MATCH, FRUITLESS	
MJ	14			14		MAGNOLIA VIBRICANA 'JIM WILSON'	MOONGLOW SWEET BAY MAGNOLIA	8 & 8	10' HT. MIN.		STRONG CENTRAL LEADER, MATCH	
ML	13			13		MAGNOLIA GRANDIFLORA 'LITTLE GEM'	DWARF SOUTHERN MAGNOLIA	8 & 8	10' HT. MIN.		STRONG CENTRAL LEADER, FULL TO BASE	
PA	21	15		6		PLATANUS X ACERIFOLIA 'BLOODGOOD'	BLOODGOOD LONDON PLANE TREE	8 & 8	3.1' CAL. MIN.		STRONG CENTRAL LEADER	
QH	9	3	4	2		QUERCUS PHellos 'HIGHTOWER'	HIGHTOWER WILLOW OAK	8 & 8	3.1' CAL. MIN.		STRONG CENTRAL LEADER, MATCH	
SHRUBS	QTY	SHEET 3	SHEET 3B	SHEET 4	SHEET 5	BOTANICAL NAME	COMMON NAME	SIZE	WIDTH	HEIGHT	SPACING	REMARKS
AR	5	5				ARONIA ARBUTIFOLIA 'BRILLIANTISSIMA'	BRIGHT RED CHOKEBERRY/RED CHOKEBERRY	#3		24' HT. MIN.	48" oc	
CO	25	18		4		CORNUS SERICEA 'CARDINAL'	RED TIND DOGWOOD	#3	48" OC	24' HT. MIN.	48" oc	FULL TO GROUND, DENSE
CU	36	36				CLETHRA ALNIFOLIA 'HUMBOLDT'	SUMMERSWEET	#3	36" O.C.	24' HT. MIN.	36" oc	
IG	122	64		27	31	ILEX GLABRA 'SHAMROCK'	HICKORY	#3	36" O.C.	42" oc	42" oc	FULL TO BASE
IR	36	36				ITEA VIRGINICA 'HENRY'S GARNET'	HENRY'S GARNET SWEETSPIRE	#3	36" O.C.	36" oc	36" oc	
IT	48	48				ITEA VIRGINICA 'LITTLE HENRY' TM	LITTLE HENRY VIRGINIA SWEETSPIRE	#3	42" O.C.	24' HT. MIN.	42" oc	
MC	57	30		18	9	MYRTA CERIFERA	WAX MYRTLE	#3		36" HT. MIN.	48" oc	
PO	60	8		19	33	PRUNUS LAUROCERASUS 'OTTO LUYKEN'	LUYKEN'S LAUREL	#3	36" O.C.	24' HT. MIN.	42" oc	
GROUND COVERS	QTY	SHEET 3	SHEET 3B	SHEET 4	SHEET 5	BOTANICAL NAME	COMMON NAME	CONT	WIDTH	HEIGHT	SPACING	REMARKS
CBT	33	33				CAREX STRICTA	TUSsock SEDGE	#1	18" O.C.		18" oc	
ECP	274	188		23	63	ECHINACEA PURPUREA 'BRIGHT STAR'	PURPLE CONEFLOWER	#1	18" O.C.		18" oc	
EDJ	194	92		72		EUPATORIUM DUBIUM 'LITTLE JOE'	JOE-PYE WEED	#1	18" O.C.		18" oc	
HRH	317	271		46		HEMEROCALLIS X 'HAPPY RETURNS'	HAPPY RETURNS DAYLILY	#1	18" O.C.		18" oc	
HYB	52	52				HYPERICUM CALYCONUM 'BROGADOON'	CREeping ST. JOHN'S WORT	#1	18" O.C.		18" oc	
IRV	40	40				IRIS VERSICOLOR	BLUE FLAG	#1	18" O.C.		18" oc	
JCB	146	146				JUNIPERUS CONFERTA 'BLUE PACIFIC'	BLUE PACIFIC JUNIPER	#1	18" O.C.		18" oc	
LMB	481	427		54		LIRIOPE MUSCARI 'BIG BLUE'	BIG BLUE LILYTURF	#1	12" O.C.		12" oc	
LMY	2,801	233	805	961	502	LIRIOPE MUSCARI 'VARIEGATA'	VARIEGATED LILY TURF	#1	12" O.C.		12" oc	
NRW	383	134		229		NEPETA RACEMOSA 'WALKER'S LOW'	CATMINT	#1	18" O.C.		18" oc	
PAH	40	40				PENNISETUM ALOPECUROIDES 'HAMELIN'	DWARF FOUNTAIN GRASS	#1	24" O.C.		24" oc	
PVH	105	21		84		PANICUM VIRGATUM 'HEAVY METAL'	BLUE SWITCH GRASS	#1	36" O.C.		36" oc	
PVS	51	37		14		PANICUM VIRGATUM 'SHENANDOAH'	SWITCH GRASS	#1	36" O.C.		36" oc	
RAO	134	48		7	69	RHUS AROMATICA 'GRO-LOW'	GRO-LOW FRAGRANT SUMAC	#1	36" O.C.		36" oc	
RPO	138	62		74		RUBISCOA FULGIDA 'GOLDSTRUM'	CONEFLOWER	#1	18" O.C.		18" oc	
SAF	142	65		77		SEDUM X 'AUTUMN JOY'	AUTUMN JOY STONECROP	#1	18" O.C.		18" oc	
SCB	114	114				SOLIDAGO CANADENSIS 'BABY GOLD'	GOLDENROD	#1	18" O.C.		18" oc	

Trees on the Belmont Bridge project that are consistent with the High Street planting list presented at public hearing



Public Hearing Feedback on Planting

Key Takeaways

- Encourage the use of native trees
- Consider pedestrian comfort and safety
- Desire for larger trees rather than understory

• Priorities

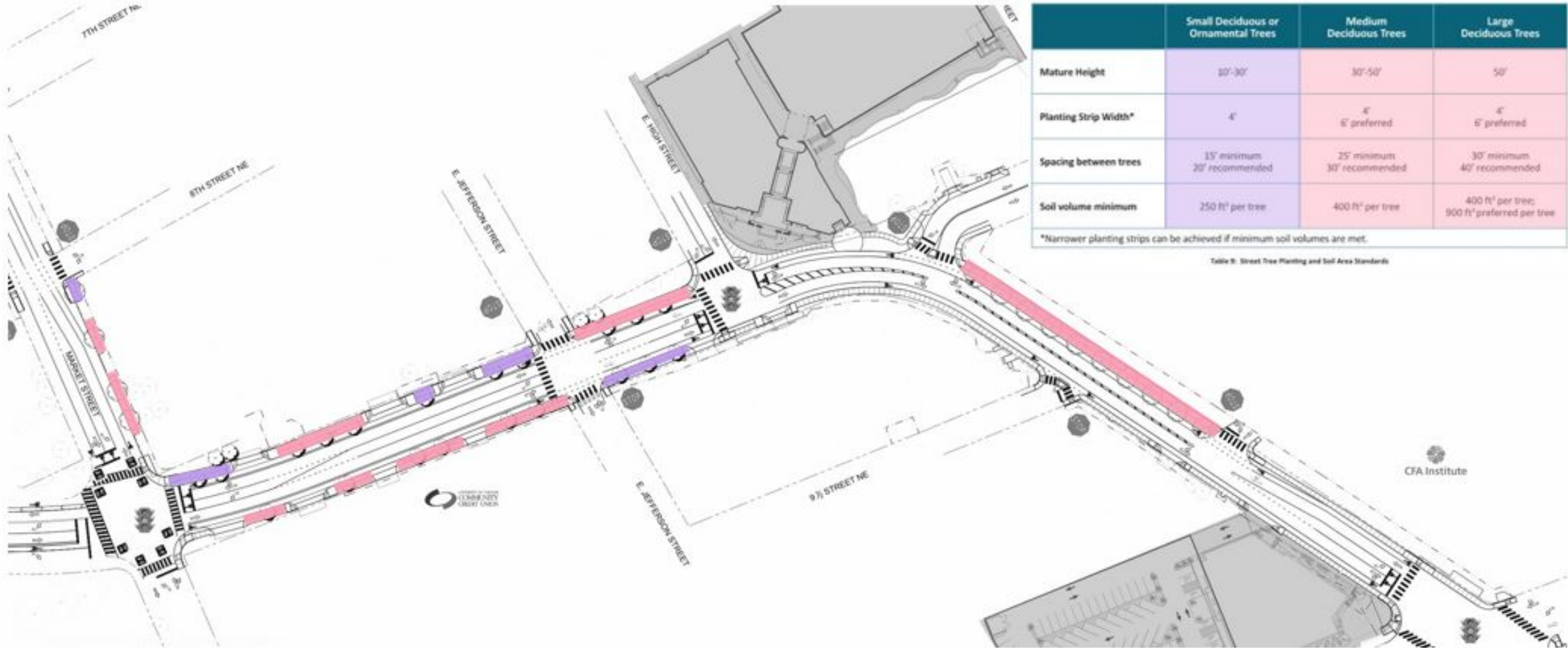
1. Large trees for shade
2. Native tree varieties

• Challenges

1. Adequate soil volume available for large trees
2. Overhead electric utilities



Soil Volume & Trees



Potential Large Canopy Trees



London Plane Tree
Platanus x acerifolia
'Bloodgood'



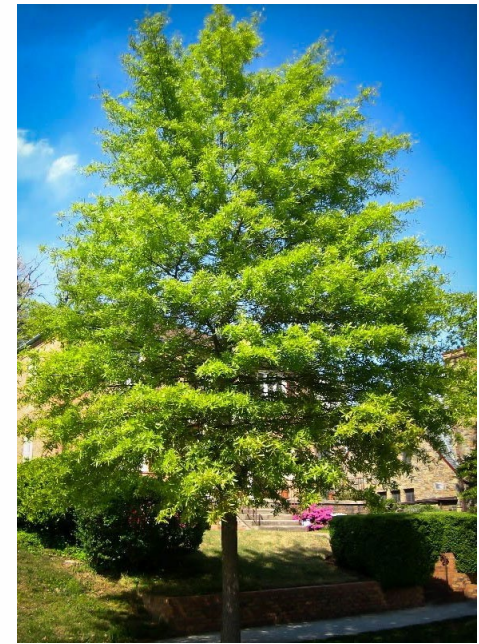
Sweet Gum
Liquidambar styraciflua
'Rotundiloba'



Scarlet Oak
Quercus coccinea



American Linden
Tilia Americana



Willow Oak
Quercus phellos 'Hightower'



Potential Small Understory Trees



Flowering Dogwood
Cornus florida



American Hornbeam
Carpinus caroliniana



Serviceberry
Amelanchier x grandiflora



Redbud
Cercis canadensis
'Hearts of Gold'



Winter King Hawthorn
Crataegus viridis 'Winter King'





Thank You!

Questions?

June 18, 2019



Werner, Jeffrey B

From: Janiczek, Jeanette
Sent: Tuesday, May 7, 2019 2:22 PM
To: Rainey, Carrie; 'McPeters, Brian'; Motsch, Timothy P; Ikefuna, Alexander; Edwards, Tony; Creasy, Missy; Werner, Jeffrey B
Cc: Aimone, Keith
Subject: RE: E. High Streetscape Project - Status Call

Jeff (and everyone else) –

We'd like to **add two items to BAR's July 16th meeting:**

- 1) Final COA for Belmont Bridge
Coming back to Board with responses to previous questions (lighting plan, wall design plan, staircase refinement SW corner of bridge) as well as refined details on changes (crosswalks, parking lot surface, railing, knuckle design, reconfigured existing ramp to meet ADA from bridge to Mall, etc.)
- 2) Preliminary Discussion for East High Streetscape
Most if not all the details will match materials used on Belmont

Meeting Materials are due on 6/25. In the past, we were given one additional week grace period which would be 7/2. Since you are down a staff member and this 3 week period allows for the drafting of staff reports, we will provide as close to finalized version of the presentation on the official deadline and only provide absolutely necessary small tweaks/refinements to report by 7/2 (nothing that would alter staff report).

We are planning to receive the COA for Belmont at the 7/16 meeting and East High in 1/20. Given Belmont has done all the heavy lifting, it shouldn't be any problem for East High to get the COA in 1/20.

Thanks for getting us this far!

Jeanette Janiczek

UCI Program Manager
City of Charlottesville
Phone 434-970-3309
Fax 434-970-3359

From: Rainey, Carrie <raineyc@charlottesville.org>
Sent: Tuesday, May 7, 2019 12:32 PM
To: 'McPeters, Brian' <brian.mcpeters@kimley-horn.com>; Motsch, Timothy P <motscht@charlottesville.org>; Ikefuna, Alexander <ikefuna@charlottesville.org>; Edwards, Tony <Edwardst@charlottesville.org>; Creasy, Missy <CREASYM@CHARLOTTESVILLE.ORG>; Janiczek, Jeanette <JANICZEK@charlottesville.org>
Cc: Aimone, Keith <keith.aimone@kimley-horn.com>
Subject: RE: E. High Streetscape Project - Status Call

If it is all the same/similar materials, I agree a separate work session is unlikely to be needed.

Thanks,

Carrie

From: McPeters, Brian <brian.mcpeters@kimley-horn.com>
Sent: Tuesday, May 7, 2019 12:31 PM
To: Rainey, Carrie <raineyc@charlottesville.org>; Motsch, Timothy P <motscht@charlottesville.org>; Ikefuna, Alexander <ikefuna@charlottesville.org>; Edwards, Tony <Edwardst@charlottesville.org>; Creasy, Missy <CREASYM@CHARLOTTESVILLE.ORG>; Janiczek, Jeanette <JANICZEK@charlottesville.org>
Cc: Aimone, Keith <keith.aimone@kimley-horn.com>
Subject: RE: E. High Streetscape Project - Status Call

I'll let Jeanette explain her plans for the bridge presentation to BAR, but I don't see why we would need a separate BAR meeting for E. High. Quite honestly a lot of the design decisions are already made, since the furniture, lights, plant pallet all will/should match Belmont.

B.

From: Rainey, Carrie <raineyc@charlottesville.org>
Sent: Tuesday, May 7, 2019 12:04 PM
To: Motsch, Timothy P <motscht@charlottesville.org>; Ikefuna, Alexander <ikefuna@charlottesville.org>; Edwards, Tony <Edwardst@charlottesville.org>; Creasy, Missy <CREASYM@CHARLOTTESVILLE.ORG>; Janiczek, Jeanette <JANICZEK@charlottesville.org>
Cc: Aimone, Keith <keith.aimone@kimley-horn.com>; McPeters, Brian <brian.mcpeters@kimley-horn.com>
Subject: RE: E. High Streetscape Project - Status Call

This sounds like a good path to me. Is the July meeting for the bridge a work session focused on the bridge, or is it on a regular agenda? For West Main, we had been doing special work sessions on the project for the preliminary discussion phase (planned to be put on a regular agenda for actual COA), but West Main is much longer, so perhaps it is not needed for East High. Just wanted to note it is an option. Jeff probably has a better sense of what BAR would expect, if anything.

Thanks,

Carrie

From: Motsch, Timothy P <motscht@charlottesville.org>
Sent: Tuesday, May 7, 2019 11:33 AM
To: Ikefuna, Alexander <ikefuna@charlottesville.org>; Edwards, Tony <Edwardst@charlottesville.org>; Creasy, Missy <CREASYM@CHARLOTTESVILLE.ORG>; Rainey, Carrie <raineyc@charlottesville.org>; Janiczek, Jeanette <JANICZEK@charlottesville.org>
Cc: Aimone, Keith <keith.aimone@kimley-horn.com>; McPeters, Brian <brian.mcpeters@kimley-horn.com>
Subject: RE: E. High Streetscape Project - Status Call

Hi All,

Just want to verify what was requested two weeks ago by Brian regarding BAR described below.

- Have the first BAR for this project the same meeting we are getting final Belmont Bridge approval in July.
- We need to give them deadlines for BAR materials.
- COA from BAR in January 2020.

Please chime in as necessary.

Thanks,

Tim

From: McPeters, Brian <brian.mcpeters@kimley-horn.com>
Sent: Wednesday, April 24, 2019 5:05 PM

To: Motsch, Timothy P <motscht@charlottesville.org>

Cc: Edwards, Tony <Edwardst@charlottesville.org>; Ikefuna, Alexander <ikefuna@charlottesville.org>; Aimone, Keith <keith.aimone@kimley-horn.com>; Harrell, Matt <matt.harrell@kimley-horn.com>

Subject: RE: E. High Streetscape Project - Status Call

Tim,

A summary of our call is as follows (note one date tweak per our Belmont call following today's call):

1. The VDOT Design Public Hearing is scheduled for June 12th from 5 to 8 PM at City Space
 - a. Kimley-Horn provided draft newspaper ads and property owner letters for review and consideration. The Newspaper ad must run on or before Sunday, May 12th. The City will handle posting in the paper.
 - b. There are two letters/mailings to send out. VDOT guidance requires direct mailings to affected owners (those with parcel #'s on the plans). The City has elected to do a wider mailing as was done in 2018. I recommend this be a simplified letter and may only consist of the flyer described below, since the property owner letter offers to set up face to face with affected owners. Letters must be post marked to affected owners the week of 5/13.
 - c. Kimley-Horn will provide a court reporter at the meeting.
 - d. Kimley-Horn will update the project website with information regarding the hearing.
 - e. Kimley-Horn will create a graphic for social media and a flyer for posting/ mailing. Kimley-Horn will send a draft by next Wednesday.
 - f. Can the City look into use of the portable changeable message signs the week before June 12th along the corridor?
2. BAR
 - a. We have determined to ideally go to BAR 2x. The 1st meeting will be a preliminary briefing. Our schedule targeted June 18th; however, after the Belmont call we will be seeking a final approval on Belmont at the July meeting. If ok by you, I'd like to do both projects at the same meeting. Can we target a July meeting which will still take place prior to Council endorsement and VDOT Design Approval.
 - b. The City to provide drop deadlines for materials for BAR presentation. We will provide drafts 2 weeks prior to this date for City review.
 - c. We will tentatively plan to seek a final COA from BAR in January 2020.
3. SC
 - a. Kimley-Horn will send an update e-mail to the Steering Committee and invite them to advertise/attend the public hearing.
 - i. We will offer to share PDFs of displays via e-mail with them to let the SC comment prior to sending to the printers? We did this on Belmont, and we actually got helpful input.
4. Traffic Report (added item)
 - a. What is the status of Brennen's review of the final traffic report?
5. Parking Deck (added item)
 - a. What does the City wish to show on the Public Hearing Graphic in regards to the potential parking deck at 9th & Market? Just a shape outlining the area of the potential deck? What is the label you want here knowing options are being evaluated.

Thanks,

Brian McPeters, PE

Kimley-Horn | 1700 Willow Lawn Drive, Suite 200, Richmond, VA 23230

Direct: 804 672 4721 | Mobile: 804 539 1032

Connect with us: [Twitter](#) | [LinkedIn](#) | [Facebook](#) | [Instagram](#)

Celebrating 12 years as one of FORTUNE's 100 Best Companies to Work For