

# Barracks Road

October 15, 2012



copyright © 2012 brown | craig | turner

#### OWNER/DEVELOPER

Federal Realty  
Investment Trust  
1626 E. Jefferson Street  
Rockville, MD 20852  
301.998.8100

#### CIVIL ENGINEER

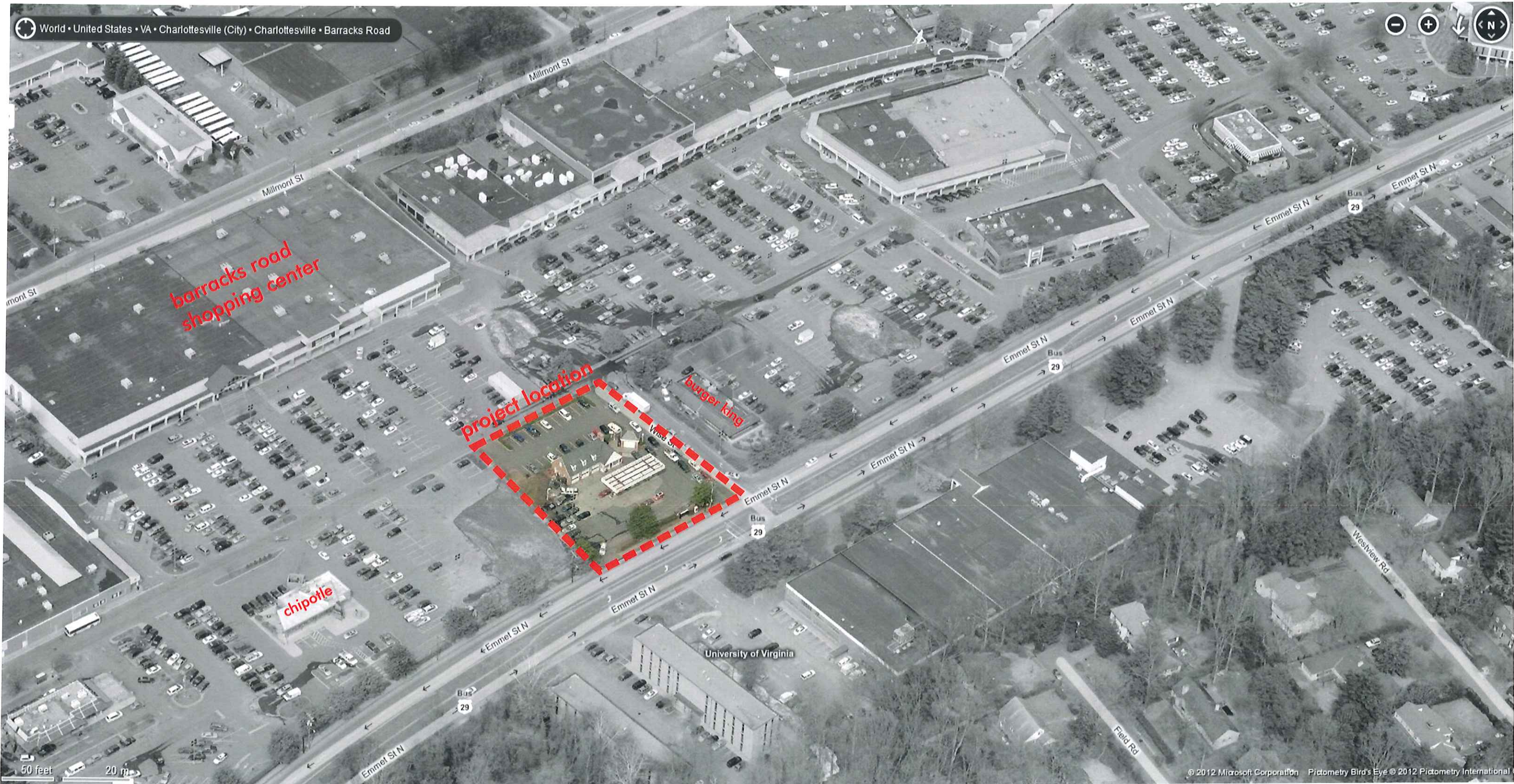
Bohler Engineering  
28 Blackwell Park Lane  
Suite 201  
Warrenton, VA 20186  
540.349.4500

#### LANDSCAPE ARCHITECT

STUDIO39  
Landscape Architecture, P.C.  
6416 Grovedale Drive, #100-A  
Alexandria, VA 22310  
703.719.6500

BROWN CRAIG TURNER  
one charles center  
100 n charles street | 18th floor  
baltimore, maryland 21201  
† 410.837.2727  
www.bctarchitects.com

**bct**



overall siteplan

**OWNER/DEVELOPER**  
**Federal Realty Investment Trust**  
 1626 E. Jefferson Street  
 Rockville, MD 20852  
 301.998.8100

**CIVIL ENGINEER**  
**Bohler Engineering**  
 28 Blackwell Park Lane  
 Suite 201  
 Warrenton, VA 20186  
 540.349.4500

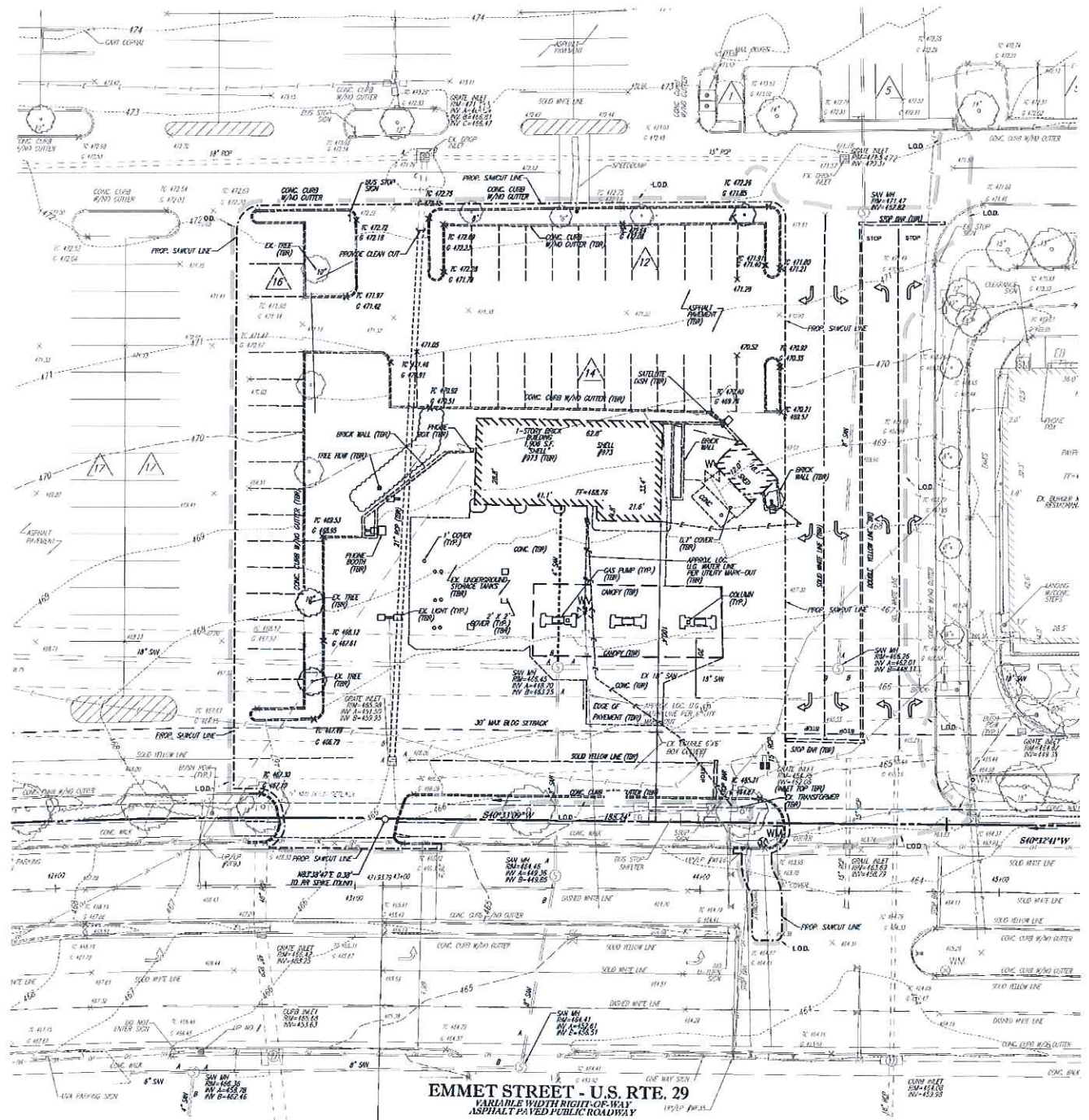
**LANDSCAPE ARCHITECT**  
**STUDIO39 Landscape Architecture, P.C.**  
 6416 Grovedale Drive, #100-A  
 Alexandria, VA 22310  
 703.719.6500

# Barracks Road

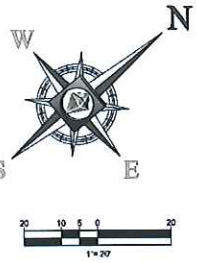
15 OCT 2012

**BROWN CRAIG TURNER**  
 one charles center  
 100 n charles street | 18th floor  
 baltimore, maryland 21201  
 t 410.837.2727  
 f 410.837.7447  
 www.bctarchitects.com  
 copyright © 2012 bct





existing siteplan



IT IS THE RESPONSIBILITY OF THE CONTRACTOR TO VERIFY ALL OF THE INFORMATION AND CONDITIONS SHOWN ON THIS PLAN. THE CONTRACTOR SHALL BE RESPONSIBLE FOR OBTAINING ALL NECESSARY PERMITS AND APPROVALS FROM THE APPROPRIATE AGENCIES. THE CONTRACTOR SHALL BE RESPONSIBLE FOR OBTAINING ALL NECESSARY PERMITS AND APPROVALS FROM THE APPROPRIATE AGENCIES. THE CONTRACTOR SHALL BE RESPONSIBLE FOR OBTAINING ALL NECESSARY PERMITS AND APPROVALS FROM THE APPROPRIATE AGENCIES.

**BOHLER ENGINEERING**  
 CIVIL & CONSTRUCTION ENGINEERING  
 4000 WOODBURN AVENUE  
 WARRINGTON, VA 20186  
 (540) 349-4500  
 www.BohlerEngineering.com

REV	DATE	COMMENT	BY

THE FOLLOWING IS A PRELIMINARY NOTIFICATION BY THE ENGINEER OF THE PROPOSED CONSTRUCTION TO BE PERFORMED ON ANY FEDERAL PROPERTY TO BE USED BY THE DISTRICT OF COLUMBIA AND DISTRICT OF MARYLAND. THE DISTRICT OF COLUMBIA AND DISTRICT OF MARYLAND ARE NOT RESPONSIBLE FOR THE ACCURACY OF THIS INFORMATION. FOR MORE INFORMATION, CONTACT THE DISTRICT OF COLUMBIA AND DISTRICT OF MARYLAND AT (202) 452-2000.

**NOT APPROVED FOR CONSTRUCTION**

PROJECT NO.: V991005.02  
 DRAWN BY: ESH  
 CHECKED BY: SDC  
 DATE: 8/20/12  
 SCALE: 1" = 20'  
 CAD FILE: S30

**FINAL SITE PLAN**  
 FOR  
**FEDERAL REALTY INVESTMENT TRUST**  
 BARRACKS ROAD SHOPPING CENTER  
 CITY OF CHARLOTTESVILLE, VA

**BOHLER ENGINEERING**  
 28 BLACKWELL PARK LANE, SUITE 201  
 WARRINGTON, VIRGINIA 20186  
 Phone: (540) 349-4500  
 Fax: (540) 349-0321  
 www.BohlerEngineering.com

COMMONWEALTH OF VIRGINIA  
 SCOTT D. GOOKIN  
 Lic. No. 047776  
 PROFESSIONAL ENGINEER

SHEET TITLE:  
**EXISTING CONDITIONS & DEMOLITION PLAN**  
 SHEET NUMBER:  
 4  
 OF 14

**OWNER/DEVELOPER**  
 Federal Realty Investment Trust  
 1626 E. Jefferson Street  
 Rockville, MD 20852  
 301.998.8100

**CIVIL ENGINEER**  
 Bohler Engineering  
 28 Blackwell Park Lane  
 Suite 201  
 Warrenton, VA 20186  
 540.349.4500

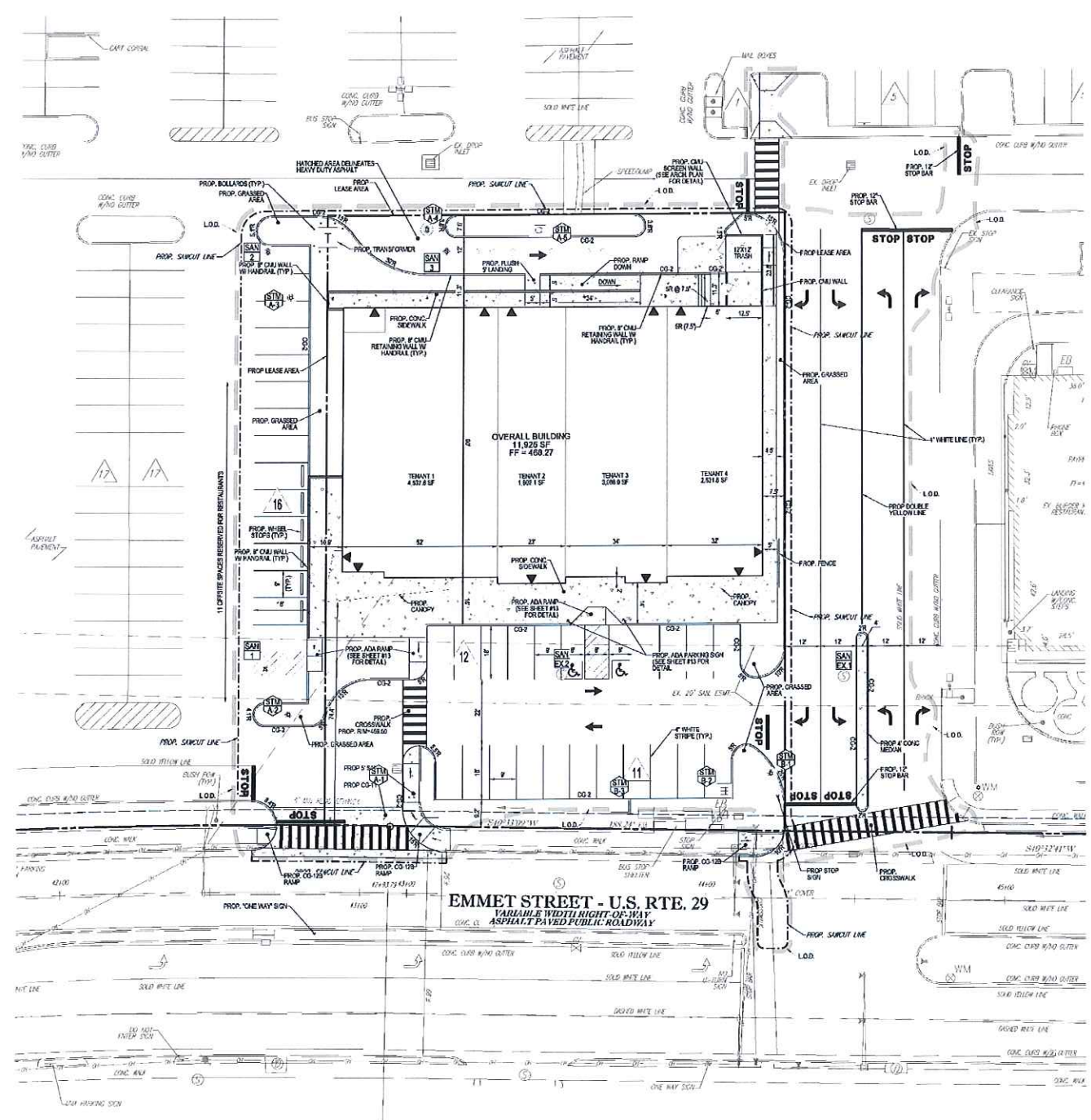
**LANDSCAPE ARCHITECT**  
 STUDIO39  
 Landscape Architecture, PC.  
 6416 Grovedale Drive, #100-A  
 Alexandria, VA 22310  
 703.719.6500

# Barracks Road

15 OCT 2012

**BROWN CRAIG TURNER**  
 one charles center  
 100 n charles street | 18th floor  
 baltimore, maryland 21201  
 f 410.837.2727  
 f 410.837.7447  
 www.bctarchitects.com  
 copyright © 2012 bct





**proposed siteplan**

**BOHLER ENGINEERING**  
 CIVIL & CONSULTING ENGINEERS  
 PROJECT MANAGER  
 LANDSCAPE ARCHITECTS

BOHLER ENGINEERING OFFICES:  
 BOWLING GREEN, OHIO  
 CHARLOTTE, NC  
 CHARLOTTE, VA  
 CHICAGO, IL  
 COLUMBIA, MD  
 FORT WORTH, TX  
 HANOVER, VA  
 HARTFORD, CT  
 HUNTSVILLE, AL  
 JEFFERSON CITY, MO  
 LITTLE ROCK, AR  
 MEMPHIS, TN  
 NEW YORK, NY  
 PHOENIX, AZ  
 RICHMOND, VA  
 ROCKVILLE, MD  
 TAMPA, FL  
 WASHINGTON, DC  
 WASHINGTON, VA

REV	DATE	COMMENT	BY

**NOT APPROVED FOR CONSTRUCTION**

PROJECT NO.: W0100102  
 DRAWN BY: EEN  
 CHECKED BY: SGG  
 DATE: 8/20/12  
 SCALE: 1" = 20'  
 CAD L.D.: SGG

PROJECT:  
**FINAL SITE PLAN**  
 FOR  
**FEDERAL REALTY INVESTMENT TRUST**  
 BARRACKS ROAD SHOPPING CENTER  
 CITY OF CHARLOTTEVILLE, VA

**BOHLER ENGINEERING**  
 28 BLACKWELL PARK LANE, SUITE 201  
 WARRENTON, VIRGINIA 20186  
 Phone: (410) 349-4500  
 Fax: (410) 349-6321  
 www.BohlerEngineering.com

COMMONWEALTH OF VIRGINIA  
**SCOTT D. GOOKIN**  
 Lic. No. 047776  
 PROFESSIONAL ENGINEER

SHEET TITLE:  
**SITE PLAN**

SHEET NUMBER:  
**4**  
 OF 13

**OWNER/DEVELOPER**  
 Federal Realty Investment Trust  
 1626 E. Jefferson Street  
 Rockville, MD 20852  
 301.998.8100

**CIVIL ENGINEER**  
 Bohler Engineering  
 28 Blackwell Park Lane  
 Suite 201  
 Warrenton, VA 20186  
 540.349.4500

**LANDSCAPE ARCHITECT**  
 STUDIO39  
 Landscape Architecture, PC.  
 6416 Grovedale Drive, #100-A  
 Alexandria, VA 22310  
 703.719.6500

# Barracks Road

15 OCT 2012

**BROWN CRAIG TURNER**  
 one charles center  
 100 n charles street | 18th floor  
 ballimore, maryland 21201  
 t 410.837.2727  
 f 410.837.7447  
 www.bctarchitects.com  
 copyright © 2012 bct





existing conditions

Barracks Road

15 OCT 2012

OWNER/DEVELOPER

Federal Realty  
Investment Trust  
1626 E. Jefferson Street  
Rockville, MD 20852  
301.998.8100

CIVIL ENGINEER

Bohler Engineering  
28 Blackwell Park Lane  
Suite 201  
Warrenton, VA 20186  
540.349.4500

LANDSCAPE ARCHITECT

STUDIO39  
Landscape Architecture, P.C.  
6416 Grovedale Drive, #100-A  
Alexandria, VA 22310  
703.719.6500

BROWN CRAIG TURNER

one charles center  
100 n charles street | 18th floor  
baltimore, maryland 21201  
t 410.837.2727  
f 410.837.7447  
www.bctarchitects.com  
copyright © 2012 bct





existing conditions

**OWNER/DEVELOPER**  
**Federal Realty**  
**Investment Trust**  
 1626 E. Jefferson Street  
 Rockville, MD 20852  
 301.998.8100

**CIVIL ENGINEER**  
**Bohler Engineering**  
 28 Blackwell Park Lane  
 Suite 201  
 Warrenton, VA 20186  
 540.349.4500

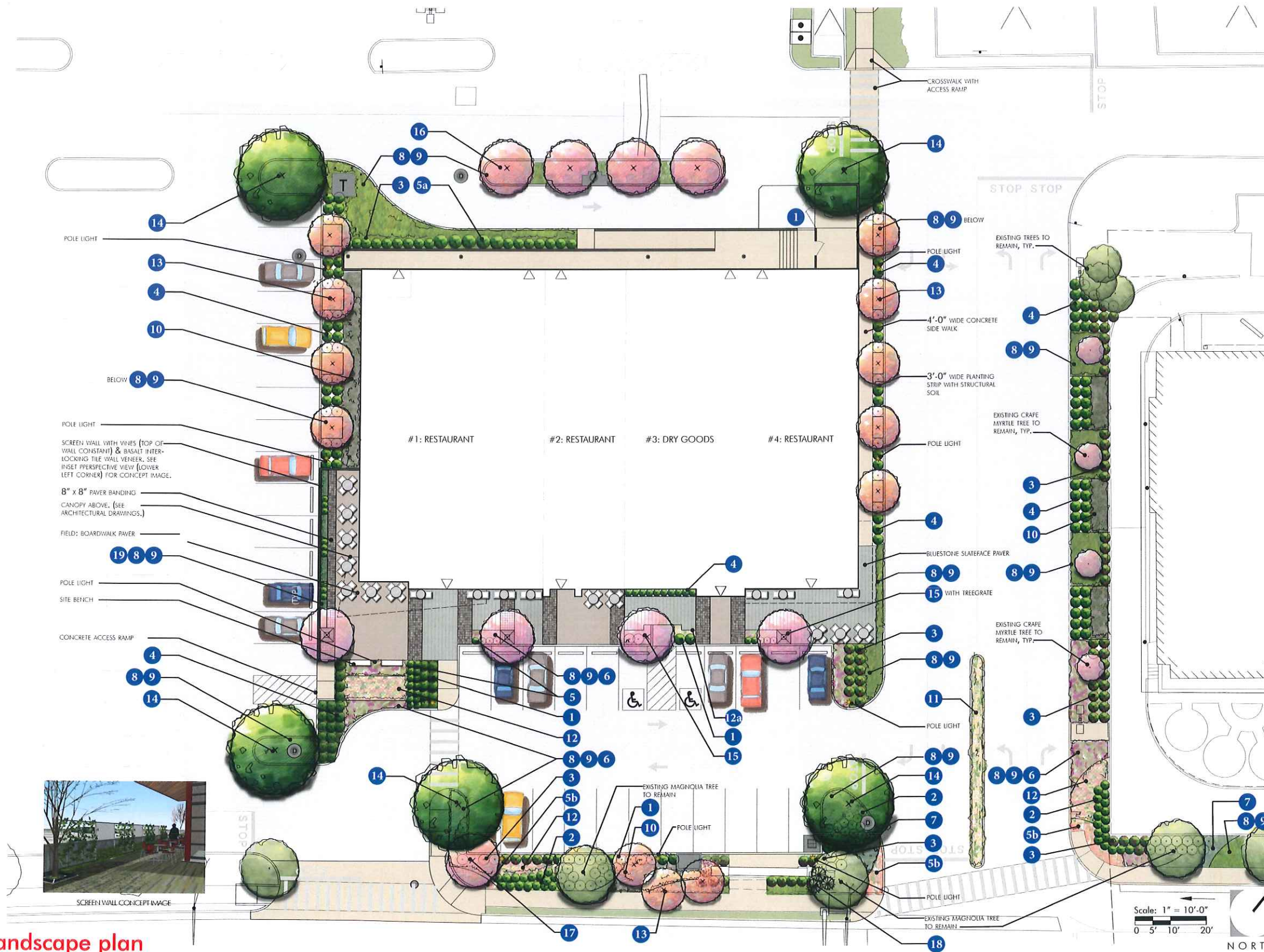
**LANDSCAPE ARCHITECT**  
**STUDIO39**  
**Landscape Architecture, P.C.**  
 6416 Grovedale Drive, #100-A  
 Alexandria, VA 22310  
 703.719.6500

Barracks Road

15 OCT 2012

**BROWN CRAIG TURNER**  
 one charles center  
 100 n charles street | 18th floor  
 ballimore, maryland 21201  
 t 410.837.2727  
 f 410.837.7447  
 www.bctarchitects.com  
 copyright © 2012 bct





BANDING PAVER: WHITACRE GREER; 8" X 8" CLAY PAVER COLOR: "CHOCOLATE"



FIELD PAVER 1 1/4" THICK GREER; BOARDWALK CLAY PAVER; 2" X 9" COLORS: "CIMMERIAN" & "MAJESTIC"



FIELD PAVER 2" THICK GREER ARCHITECTURAL SLATEFACE PAVER 1" X 1.5" COLOR: "BLUESTONE"



WALL VENEER: HORSTONE BASALT INTERLOCKING TILES COLOR: "ASH GREY"



POLE LIGHT: BOUNCE 12'-0" MOUNTING HEIGHT; FULL CUT OFF FIXTURE; KIM LIGHTING



TREE GRATE: IRON WITH 48" SQUARE ADA COMPLIANT 1/2" SLOT



SITE BENCH: HUDSON BENCH FORMS & SURFACES

NOTE: TABLES & CHAIRS ARE SHOWN FOR ILLUSTRATIVE PURPOSES ONLY.

proposed landscape plan

Barracks Road

15 OCT 2012

OWNER/DEVELOPER  
**Federal Realty Investment Trust**  
 1626 E. Jefferson Street  
 Rockville, MD 20852  
 301.998.8100

CIVIL ENGINEER  
**Bohler Engineering**  
 28 Blackwell Park Lane  
 Suite 201  
 Warrenton, VA 20186  
 540.349.4500

LANDSCAPE ARCHITECT  
**STUDIO39 Landscape Architecture, P.C.**  
 6416 Grovedale Drive, #100-A  
 Alexandria, VA 22310  
 703.719.6500

BROWN CRAIG TURNER  
 one charles center  
 100 n charles street | 18th floor  
 ballimore, maryland 21201  
 t 410.837.2727  
 f 410.837.7447  
 www.bctarchitects.com  
 copyright © 2012 bct



## SHRUBS



1  
*ILEX GLABRA* 'SHAMROCK'  
SHAMROCK INKBERRY HOLLY



2  
*RAPHIOLEPIS INDICA*  
INDIAN HAWTHORN



3  
*ROSA* 'RADRAZZ'  
KNOCK OUT ROSE



4  
*BUXUS MICROPHYLLA*  
WINTER GREEN BOXWOOD



5  
*NANDINA DOMESTICA*  
HARBOUR DWARF NANDINA



5a  
*MYRICA PUSILLA*  
DWARF WAX MYRTLE

## SEASONAL COLOR



5b  
MIXED VARIETIES  
SEASONAL COLOR

## GROUNDCOVER/ PERENNIALS & ORN. GRASSES



6  
*ALLIUM SCHOENOPRASUM*  
ALLIUM 'GLOBEMASTER'



7  
*HOSTA SIEBOLDIANA*  
HOSTA 'ELEGANCE'



8  
*LIRIOPE MUSCARI*  
'BIG BLUE' LIRIOPE



9  
*NARCISSUS*  
'ICE FOLLIES' DAFFODILS



10  
*PANICUM VIRGATUM*  
'DALLA BLUES' SWITCHGRASS



11  
*PENNISETUM ALOPECUROIDES*  
'CASSIANS CHOICE' PENNISETUM



12  
*MUHLENBERGIA CAPILLARIS*  
PINK MUHLY



12a  
*NASSELLA (FORMERLY STIPA) TENUISSIMA*  
MEXICAN FEATHER GRASS

## TREES



13  
*PRUNUS SERRULATA* 'AMANOGAWA'  
AMANOGAWA JAPANESE FLOWERING CHERRY



14  
*BETULA NIGRA*  
RIVER BIRCH



15  
*AMELANCHIER ARBOREA* 'DOWNY'  
SERVICEBERRY



16  
*COTINUS OBOVATUS*  
AMERICAN SMOKETREE



17  
*CERCIS CANADENSIS*  
EASTERN REDBUD  
Photo © Kerry Wilken



18  
*ILEX X AQUIFERANA*  
DRAGON LADY HOLLY

## VINE



19  
*GLEASONIA SEMPERVIRENS*  
YELLOW JESSAMINE

OWNER/DEVELOPER  
**Federal Realty  
Investment Trust**  
1626 E. Jefferson Street  
Rockville, MD 20852  
301.998.8100

CIVIL ENGINEER  
**Bohler Engineering**  
28 Blackwell Park Lane  
Suite 201  
Warrenton, VA 20186  
540.349.4500

LANDSCAPE ARCHITECT  
**STUDIO39  
Landscape Architecture, P.C.**  
6416 Grovedale Drive, #100-A  
Alexandria, VA 22310  
703.719.6500

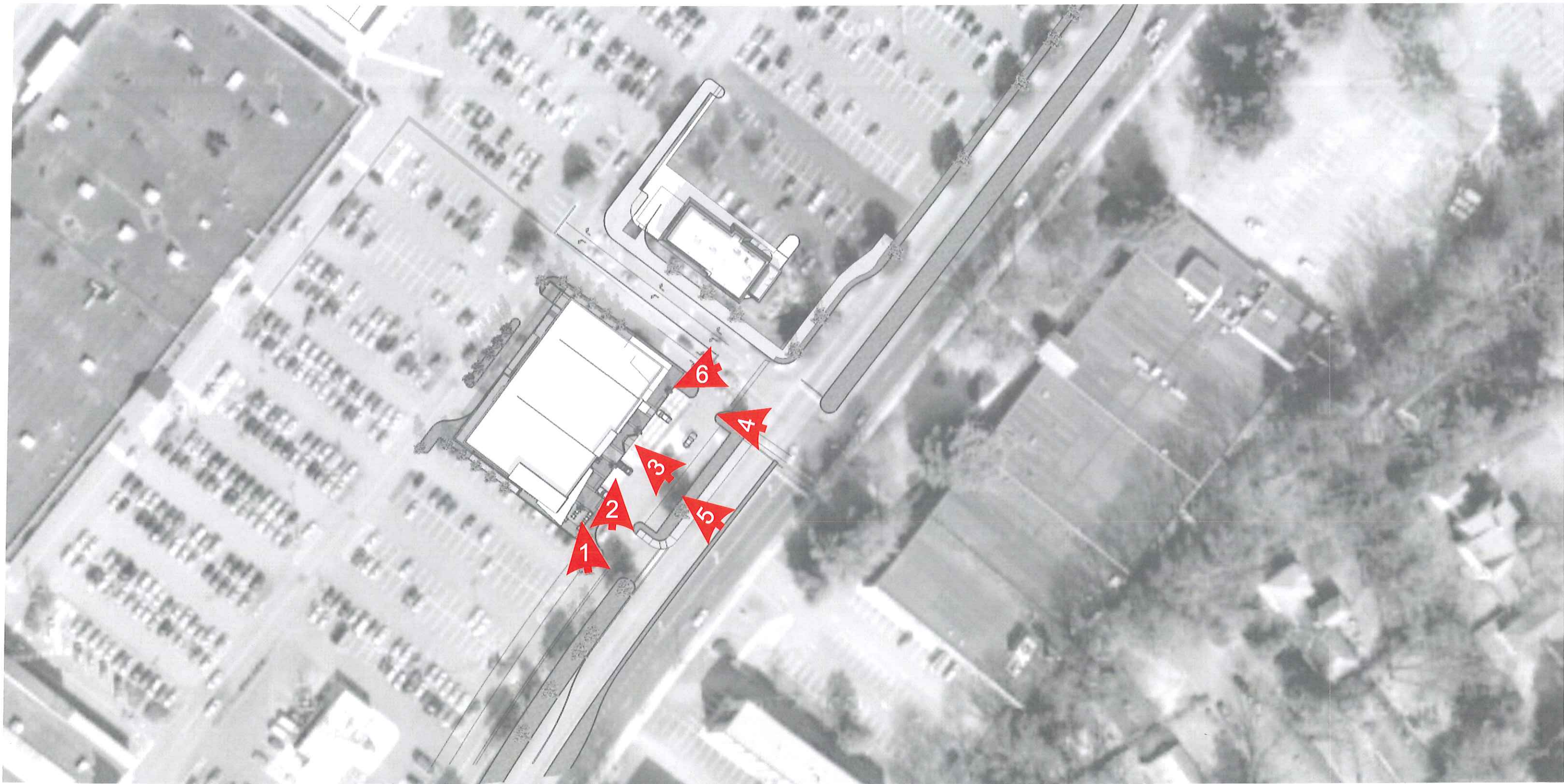
Barracks Road

15 OCT 2012

BROWN CRAIG TURNER  
one charles center  
100 n charles street | 18th floor  
baltimore, maryland 21201  
t 410.837.2727  
f 410.837.7447  
www.bctarchitects.com  
copyright © 2012 bct







overall proposed siteplan

OWNER/DEVELOPER  
**Federal Realty  
 Investment Trust**  
 1626 E. Jefferson Street  
 Rockville, MD 20852  
 301.998.8100

CIVIL ENGINEER  
**Bohler Engineering**  
 28 Blackwell Park Lane  
 Suite 201  
 Warrenton, VA 20186  
 540.349.4500

LANDSCAPE ARCHITECT  
**STUDIO39  
 Landscape Architecture, P.C.**  
 6416 Grovedale Drive, #100-A  
 Alexandria, VA 22310  
 703.719.6500

Barracks Road

15 OCT 2012

**BROWN CRAIG TURNER**  
 one charles center  
 100 n charles street | 18th floor  
 baltimore, maryland 21201  
 t 410.837.2727  
 f 410.837.7447  
 www.bctarchitects.com  
 copyright © 2012 bct





view 1

**OWNER/DEVELOPER**  
**Federal Realty**  
**Investment Trust**  
 1626 E. Jefferson Street  
 Rockville, MD 20852  
 301.998.8100

**CIVIL ENGINEER**  
**Bohler Engineering**  
 28 Blackwell Park Lane  
 Suite 201  
 Warrenton, VA 20186  
 540.349.4500

**LANDSCAPE ARCHITECT**  
**STUDIO39**  
**Landscape Architecture, P.C.**  
 6416 Grovedale Drive, #100-A  
 Alexandria, VA 22310  
 703.719.6500

## Barracks Road

15 OCT 2012

**BROWN CRAIG TURNER**  
 one charles center  
 100 n charles street | 18th floor  
 ballimore, maryland 21201  
 t 410.837.2727  
 f 410.837.7447  
 www.bctarchitects.com  
 copyright © 2012 bct





view 2

**OWNER/DEVELOPER**  
**Federal Realty  
Investment Trust**  
1626 E. Jefferson Street  
Rockville, MD 20852  
301.998.8100

**CIVIL ENGINEER**  
**Bohler Engineering**  
28 Blackwell Park Lane  
Suite 201  
Warrenton, VA 20186  
540.349.4500

**LANDSCAPE ARCHITECT**  
**STUDIO39  
Landscape Architecture, P.C.**  
6416 Grovedale Drive, #100-A  
Alexandria, VA 22310  
703.719.6500

## Barracks Road

15 OCT 2012

**BROWN CRAIG TURNER**  
one charles center  
100 n charles street | 18th floor  
ballimore, maryland 21201  
t 410.837.2727  
f 410.837.7447  
www.bctarchitects.com  
copyright © 2012 bct





view 3

**OWNER/DEVELOPER**  
**Federal Realty**  
**Investment Trust**  
 1626 E. Jefferson Street  
 Rockville, MD 20852  
 301.998.8100

**CIVIL ENGINEER**  
**Bohler Engineering**  
 28 Blackwell Park Lane  
 Suite 201  
 Warrenton, VA 20186  
 540.349.4500

**LANDSCAPE ARCHITECT**  
**STUDIO39**  
**Landscape Architecture, P.C.**  
 6416 Grovedale Drive, #100-A  
 Alexandria, VA 22310  
 703.719.6500

## Barracks Road

15 OCT 2012

**BROWN CRAIG TURNER**  
 one charles center  
 100 n charles street | 18th floor  
 ballimore, maryland 21201  
 t 410.837.2727  
 f 410.837.7447  
 www.bctarchitects.com  
 copyright © 2012 bct





view 4

**OWNER/DEVELOPER**  
**Federal Realty**  
**Investment Trust**  
 1626 E. Jefferson Street  
 Rockville, MD 20852  
 301.998.8100

**CIVIL ENGINEER**  
**Bohler Engineering**  
 28 Blackwell Park Lane  
 Suite 201  
 Warrenton, VA 20186  
 540.349.4500

**LANDSCAPE ARCHITECT**  
**STUDIO39**  
**Landscape Architecture, P.C.**  
 6416 Grovedale Drive, #100-A  
 Alexandria, VA 22310  
 703.719.6500

## Barracks Road

15 OCT 2012

**BROWN CRAIG TURNER**  
 one charles center  
 100 n charles street | 18th floor  
 ballimore, maryland 21201  
 t 410.837.2727  
 f 410.837.7447  
 www.bctarchitects.com  
 copyright © 2012 bct





view 5

# Barracks Road

15 OCT 2012

**OWNER/DEVELOPER**

**Federal Realty  
Investment Trust**  
1626 E. Jefferson Street  
Rockville, MD 20852  
301.998.8100

**CIVIL ENGINEER**

**Bohler Engineering**  
28 Blackwell Park Lane  
Suite 201  
Warrenton, VA 20186  
540.349.4500

**LANDSCAPE ARCHITECT**

**STUDIO39  
Landscape Architecture, P.C.**  
6416 Grovedale Drive, #100-A  
Alexandria, VA 22310  
703.719.6500

**BROWN CRAIG TURNER**

one charles center  
100 n charles street | 18th floor  
baltimore, maryland 21201  
t 410.837.2727  
f 410.837.7447  
www.bctarchitects.com  
copyright © 2012 bct





view 6

OWNER/DEVELOPER

**Federal Realty  
Investment Trust**  
1626 E. Jefferson Street  
Rockville, MD 20852  
301.998.8100

CIVIL ENGINEER

**Bohler Engineering**  
28 Blackwell Park Lane  
Suite 201  
Warrenton, VA 20186  
540.349.4500

LANDSCAPE ARCHITECT

**STUDIO39  
Landscape Architecture, P.C.**  
6416 Grovedale Drive, #100-A  
Alexandria, VA 22310  
703.719.6500

Barracks Road

15 OCT 2012

BROWN CRAIG TURNER

one charles center  
100 n charles street | 18th floor  
ballimore, maryland 21201  
t 410.837.2727  
f 410.837.7447  
www.bctarchitects.com  
copyright © 2012 bct





# Barracks Road

15 OCT 2012

**OWNER/DEVELOPER**  
**Federal Realty Investment Trust**  
 1626 E. Jefferson Street  
 Rockville, MD 20852  
 301.998.8100

**CIVIL ENGINEER**  
**Bohler Engineering**  
 28 Blackwell Park Lane  
 Suite 201  
 Warrenton, VA 20186  
 540.349.4500

**LANDSCAPE ARCHITECT**  
**STUDIO39 Landscape Architecture, PC.**  
 6416 Grovedale Drive, #100-A  
 Alexandria, VA 22310  
 703.719.6500

**BROWN CRAIG TURNER**  
 one charles center  
 100 n charles street | 18th floor  
 ballimore, maryland 21201  
 t 410.837.2727  
 f 410.837.7447  
 www.bctarchitects.com  
 copyright © 2012 bct







**south west elevation**

scale: 3/32=1'-0"

**OWNER/DEVELOPER**  
**Federal Realty**  
**Investment Trust**  
 1626 E. Jefferson Street  
 Rockville, MD 20852  
 301.998.8100

**CIVIL ENGINEER**  
**Bohler Engineering**  
 28 Blackwell Park Lane  
 Suite 201  
 Warrenton, VA 20186  
 540.349.4500

**LANDSCAPE ARCHITECT**  
**STUDIO39**  
**Landscape Architecture, P.C.**  
 6416 Grovedale Drive, #100-A  
 Alexandria, VA 22310  
 703.719.6500

## Barracks Road

15 OCT 2012

**BROWN CRAIG TURNER**  
 one charles center  
 100 n charles street | 18th floor  
 baltimore, maryland 21201  
 t 410.837.2727  
 f 410.837.7447  
 www.bctarchitects.com  
 copyright © 2012 bct





**north east elevation**  
scale: 3/32=1'-0"

# Barracks Road

15 OCT 2012

**OWNER/DEVELOPER**  
**Federal Realty  
Investment Trust**  
1626 E. Jefferson Street  
Rockville, MD 20852  
301.998.8100

**CIVIL ENGINEER**  
**Bohler Engineering**  
28 Blackwell Park Lane  
Suite 201  
Warrenton, VA 20186  
540.349.4500

**LANDSCAPE ARCHITECT**  
**STUDIO39  
Landscape Architecture, P.C.**  
6416 Grovedale Drive, #100-A  
Alexandria, VA 22310  
703.719.6500

**BROWN CRAIG TURNER**  
one charles center  
100 n charles street | 18th floor  
ballimore, maryland 21201  
t 410.837.2727  
f 410.837.7447  
www.bctarchitects.com  
copyright © 2012 bct





north west elevation  
scale: 3/32=1'-0"

**OWNER/DEVELOPER**  
Federal Realty  
Investment Trust  
1626 E. Jefferson Street  
Rockville, MD 20852  
301.998.8100

**CIVIL ENGINEER**  
Bohler Engineering  
28 Blackwell Park Lane  
Suite 201  
Warrenton, VA 20186  
540.349.4500

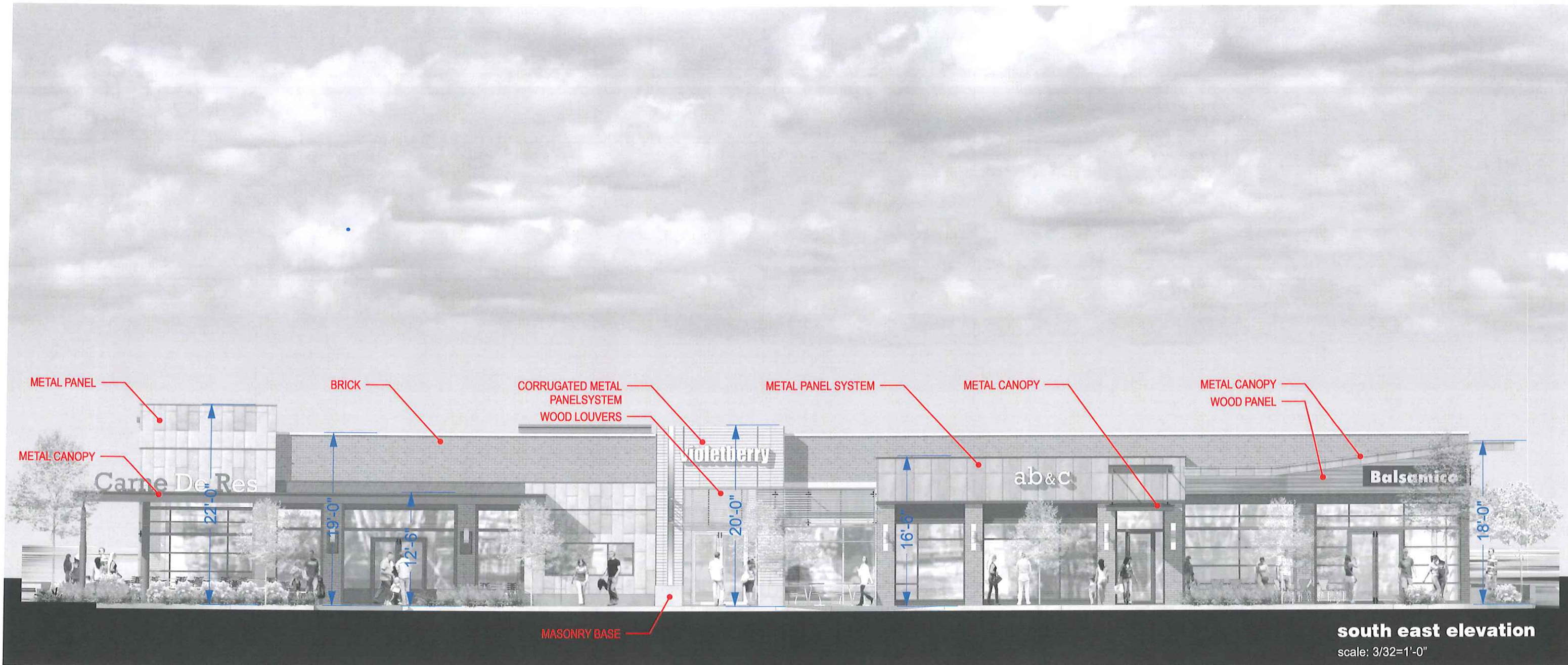
**LANDSCAPE ARCHITECT**  
STUDIO39  
Landscape Architecture, P.C.  
6416 Grovedale Drive, #100-A  
Alexandria, VA 22310  
703.719.6500

## Barracks Road

15 OCT 2012

**BROWN CRAIG TURNER**  
one charles center  
100 n charles street | 18th floor  
baltimore, maryland 21201  
t 410.837.2727  
f 410.837.7447  
www.bctarchitects.com  
copyright © 2012 bct





**OWNER/DEVELOPER**  
Federal Realty  
Investment Trust  
1626 E. Jefferson Street  
Rockville, MD 20852  
301.998.8100

**CIVIL ENGINEER**  
Bohler Engineering  
28 Blackwell Park Lane  
Suite 201  
Warrenton, VA 20186  
540.349.4500

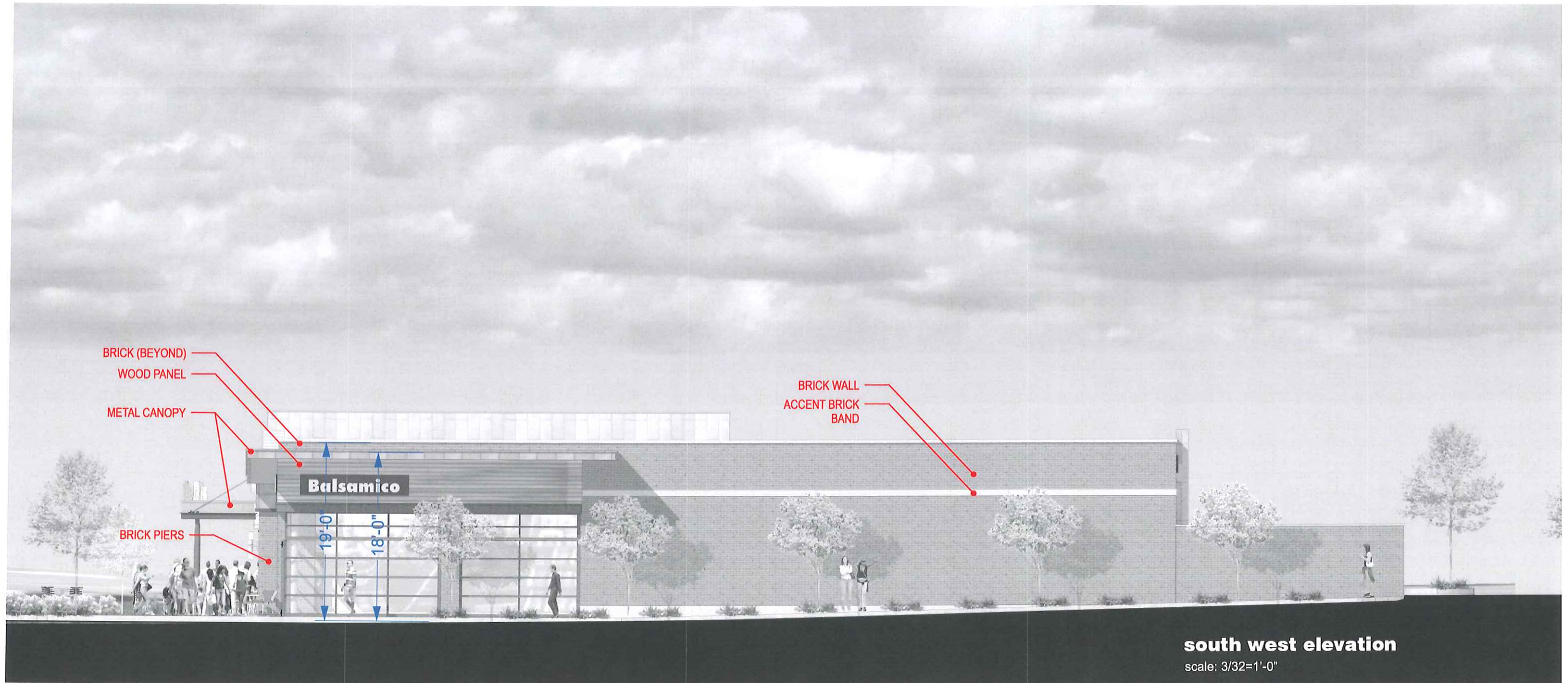
**LANDSCAPE ARCHITECT**  
STUDIO39  
Landscape Architecture, P.C.  
6416 Grovedale Drive, #100-A  
Alexandria, VA 22310  
703.719.6500

# Barracks Road

15 OCT 2012

**BROWN CRAIG TURNER**  
one charles center  
100 n charles street | 18th floor  
baltimore, maryland 21201  
t 410.837.2727  
f 410.837.7447  
www.bctarchitects.com  
copyright © 2012 bct





**south west elevation**

scale: 3/32=1'-0"

**OWNER/DEVELOPER**  
**Federal Realty Investment Trust**  
 1626 E. Jefferson Street  
 Rockville, MD 20852  
 301.998.8100

**CIVIL ENGINEER**  
**Bohler Engineering**  
 28 Blackwell Park Lane  
 Suite 201  
 Warrenton, VA 20186  
 540.349.4500

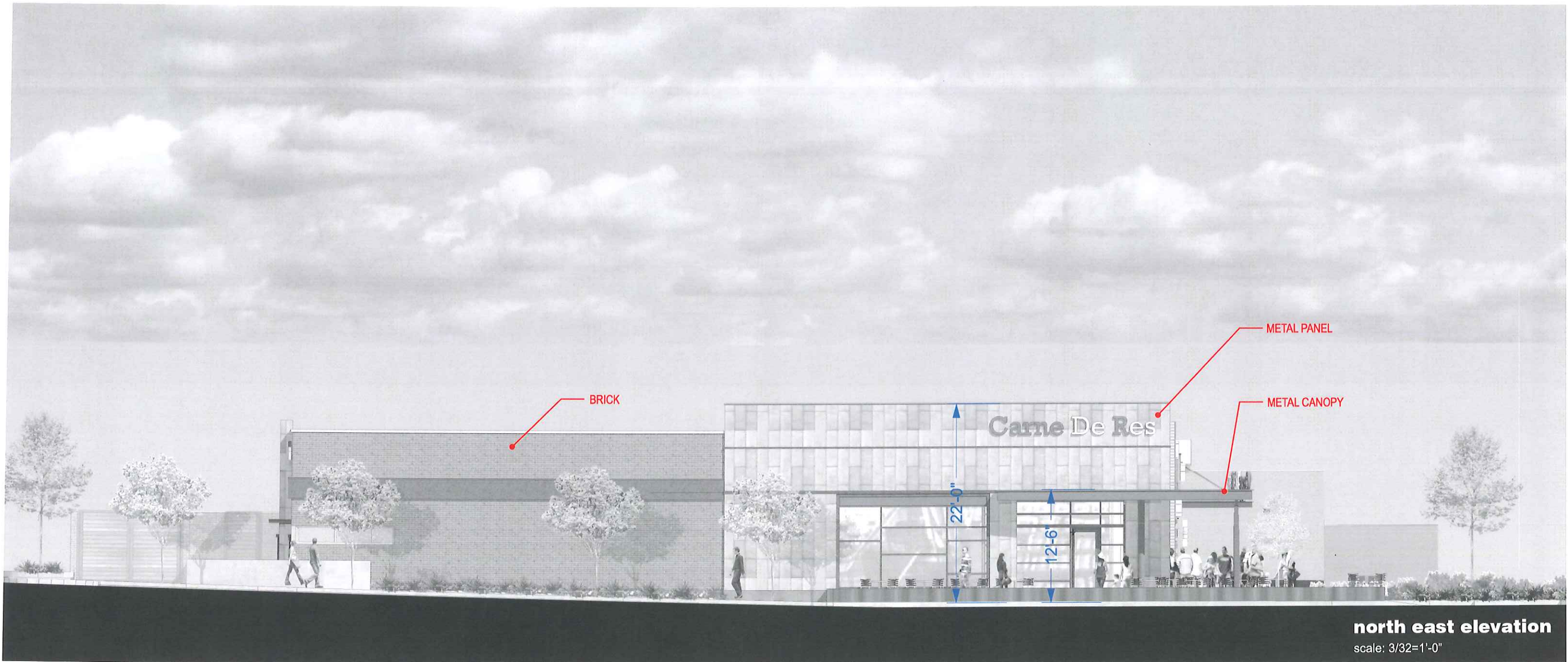
**LANDSCAPE ARCHITECT**  
**STUDIO39 Landscape Architecture, PC.**  
 6416 Grovedale Drive, #100-A  
 Alexandria, VA 22310  
 703.719.6500

# Barracks Road

15 OCT 2012

**BROWN CRAIG TURNER**  
 one charles center  
 100 n charles street | 18th floor  
 ballimore, maryland 21201  
 t 410.837.2727  
 f 410.837.7447  
 www.bctarchitects.com  
 copyright © 2012 bct





**north east elevation**  
scale: 3/32=1'-0"

**OWNER/DEVELOPER**  
Federal Realty  
Investment Trust  
1626 E. Jefferson Street  
Rockville, MD 20852  
301.998.8100

**CIVIL ENGINEER**  
Bohler Engineering  
28 Blackwell Park Lane  
Suite 201  
Warrenton, VA 20186  
540.349.4500

**LANDSCAPE ARCHITECT**  
STUDIO39  
Landscape Architecture, P.C.  
6416 Grovedale Drive, #100-A  
Alexandria, VA 22310  
703.719.6500

## Barracks Road

15 OCT 2012

**BROWN CRAIG TURNER**  
one charles center  
100 n charles street | 18th floor  
ballimore, maryland 21201  
t 410.837.2727  
f 410.837.7447  
www.bctarchitects.com  
copyright © 2012 bct





**OWNER/DEVELOPER**

**Federal Realty  
Investment Trust**  
1626 E. Jefferson Street  
Rockville, MD 20852  
301.998.8100

**CIVIL ENGINEER**

**Bohler Engineering**  
28 Blackwell Park Lane  
Suite 201  
Warrenton, VA 20186  
540.349.4500

**LANDSCAPE ARCHITECT**

**STUDIO39  
Landscape Architecture, P.C.**  
6416 Grovedale Drive, #100-A  
Alexandria, VA 22310  
703.719.6500

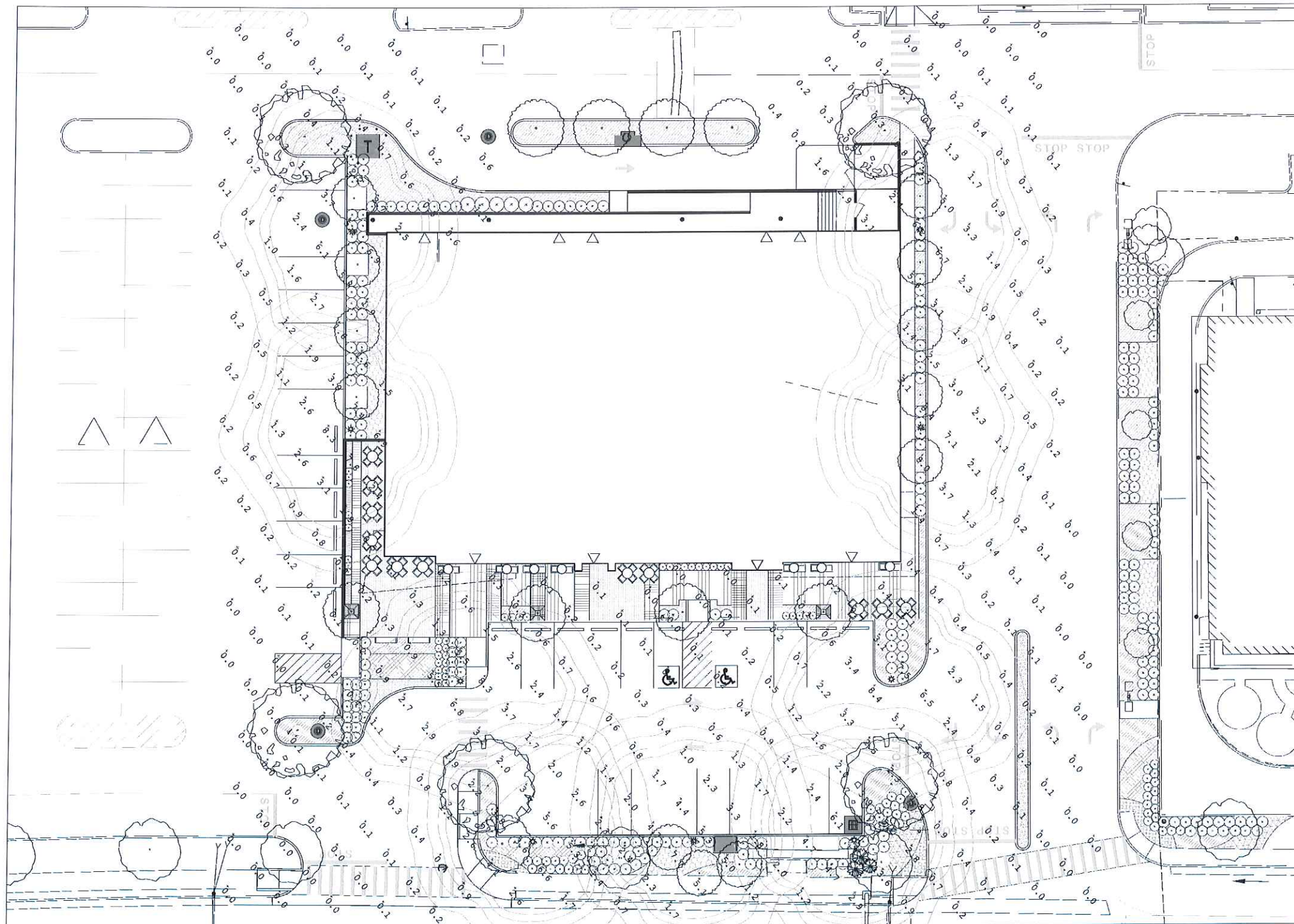
Barracks Road

15 OCT 2012

**BROWN CRAIG TURNER**

one charles center  
100 n charles street | 18th floor  
ballimore, maryland 21201  
t 410.837.2727  
f 410.837.7447  
www.bctarchitects.com  
copyright © 2012 bct





Luminaire Schedule							
Symbol	Qty	Label	Arrangement	Total Lamp Lumens	LLF	Description: FULL CUT OFF FIXTURE	
⊙	3	A	SINGLE	13300	0.700	KIM Lighting - BNSH4/175MH-ED17C/BBC	
⊙	6	A-III	SINGLE	13300	0.700	KIM Lighting -BNSH3/175MH-ED17C/BBC	
Calculation Summary							
Label	CalcType	Units	Avg	Max	Min	Avg/Min	Max/Min
CalcPts	Illuminance	Fc	1.38	8.4	0.0	N.A.	N.A.

protometric plan

# Barracks Road

15 OCT 2012

**OWNER/DEVELOPER**  
**Federal Realty Investment Trust**  
 1626 E. Jefferson Street  
 Rockville, MD 20852  
 301.998.8100

**CIVIL ENGINEER**  
**Bohler Engineering**  
 28 Blackwell Park Lane  
 Suite 201  
 Warrenton, VA 20186  
 540.349.4500

**LANDSCAPE ARCHITECT**  
**STUDIO39 Landscape Architecture, P.C.**  
 6416 Grovedale Drive, #100-A  
 Alexandria, VA 22310  
 703.719.6500

**BROWN CRAIG TURNER**  
 one charles center  
 100 n charles street | 18th floor  
 ballimore, maryland 21201  
 t 410.837.2727  
 f 410.837.7447  
 www.bctarchitects.com  
 copyright © 2012 bct

